

RESOURCE INNOVATIONS

THE RESOURCE INNOVATION GROUP
ANNUAL REPORT 2006



UNIVERSITY OF OREGON

MISSION AND PROGRAMS

MISSION

Our mission is to help government, business, and communities adopt sustainability based thinking, policies, and programs.

To achieve this mission, we assist others to expand thinking, develop linkages between seemingly unrelated organizations and issues, frame language and communication effectively, and promote innovation.

PROGRAMS

CLIMATE LEADERSHIP INITIATIVE

The Climate Leadership Initiative (CLI) is an educational, research, and technical assistance consortium aimed at increasing public understanding of the risks and opportunities posed by global warming and enhancing climate protection policy and program development.

COMMUNITY CAPACITY AND THE ENVIRONMENT

The Community Capacity and Environment program builds capacity in rural and underserved communities to address the risks of wildfires and other natural hazards. The program intends to increase awareness about the relationships between wildfire and rural poverty and provide resources for community-based efforts in fire and forest restoration. This program also examines broader relationships between natural resource management, natural disaster mitigation, and social vulnerability.

SUSTAINABLE BUSINESS AND JOB DEVELOPMENT

The Sustainable Business and Job Development project is focused on building capacity within key business clusters to adopt sustainability practices and produce sustainable products. Our Sustainable Food System project works with organic and natural food business on the West Coast and nationwide to help them adopt a sustainable business model.

SUSTAINABLE GOVERNANCE AND ORGANIZATIONAL CHANGE

The Sustainable Governance and Organizational Change program offers workshops and hands on technical assistance to local governments, communities, and private companies in sustainability change management, leadership development, knowledge management, and governance.

March 1, 2007

Dear Friends and Supporters,

On behalf of The Resource Innovation Group, I'm pleased to present our 2006 annual report. The Resource Innovation Group (TRIG) accomplished a great deal in 2006 and expanded in a number of new directions. TRIG remains on the cutting edge of advancing economic, social, and environmental issues, policies, and programs across the West.

In this report you will learn how TRIG accomplished the following:

- Initiated a sustainable business cluster development program focused on expanding the national organic and natural food trade "beyond organic."
- Facilitated the City of Eugene Sustainable Business Initiative, which resulted in the creation of an office of sustainable development and a sustainability commission, as well as other key recommendations adopted by the Eugene City Council.
- Began a local government initiative to help counties and municipalities develop climate action plans and cope with global warming.
- Initiated a neighborhood climate council program aimed at helping individual households reduce their greenhouse gas emissions.
- Conducted an analysis of the economic impacts of climate change in Washington State for the governor's office.
- Led stewardship contracting groups in three areas (Josephine County, Siuslaw Basin, and the Alsea watershed) which have resulted in increased cooperation among public and private partners, as well as forest restoration and fire protection projects.
- Released the Tribal Wildfire Resource Guide at the 2006 Intertribal Timber Council Symposium in Fairbanks, Alaska.
- Convened five tribes west of the Cascades in a forum on fire and forestry issues.
- Engaged hundreds of citizens in Oregon, Washington, and California through public meetings, roundtables, and workshops on issues related to climate change, local government sustainability, and wildfire.

This list highlights just some of our accomplishments in 2006.

We could not achieve these accomplishments without the dedication of our outstanding staff and the active participation and support from our donors, contributors, partners, and friends. Support from our colleagues in the Institute for a Sustainable Environment and the Department of Planning, Public Policy and Management at the University of Oregon have also been instrumental in our success. On behalf of the entire board and staff I thank you for your continued support and involvement!

Sincerely,

Wayne Lei
President, Board of Directors

LETTER FROM THE PRESIDENT



POLICY

WASHINGTON STATE REPORT

The Climate Leadership Initiative prepared an economic assessment of the impacts of climate change on the state of Washington, as commissioned by Washington's Department of Ecology and Department of Community Trade and Economic Development (CTED). The report, *Impacts of Climate Change on Washington's Economy: A Preliminary Assessment of Risks and Opportunities*, was released on January 10th, 2007 and received coverage in newspaper articles and editorials, and radio reports.

The process formally began in April of 2006 with the first meeting of the ten-person steering committee, comprised of faculty from Washington universities and economists from the private sector. This committee provided oversight and assisted with the research and writing. In May, CLI held a second meeting, which included the steering committee and a group of stakeholders who represented the private and public sectors in Washington. The group heard an overview of the impacts of climate change on the state, then had their first opportunity to provide information and feedback. The steering committee and stakeholders reviewed the final document.

The primary conclusions of the report are as follows:

- 1) Climate change impacts are visible today and the economic effects are becoming apparent.
- 2) The costs of climate change will grow as temperatures and sea levels rise.
- 3) Climate change will also provide economic opportunities.
- 4) When electricity, water rates and availability, sea level rise and the potential health effects are taken into account, virtually every sector of Washington's \$268.5 billion economy may be affected by climate change.

The media extensively covered the release of the study. Washington Governor Christine Gregoire used it as a basis for her Executive Order launching the

Washington Climate Challenge. The Department of Ecology and other agencies also are using the report in their work.

OREGON GOVERNOR'S INITIATIVE ON GLOBAL WARMING

Bob Doppelt sits on Governor Kulongoski's Global Warming Advisory Committee, and Roger Hamilton serves as his stand in. The purpose is to monitor the state's efforts to implement mitigation policies and develop new strategies to engage the public and pursue adaptation and mitigation strategies.

RURAL LOCAL GOVERNMENT INITIATIVE:

CLI launched the Rural Local Government Initiative in the summer of 2006, which resulted in a dozen climate change briefings in the late summer and fall with rural county commissioners, mayors, city managers, administrative staff and citizens. These briefings occurred primarily in coastal communities to focus attention on this highly vulnerable geographic sector. Meetings were held with staff of the Coquille Tribe in North Bend, local government in Northeast Oregon, as well as an assembly of architects in Portland. The meetings usually included a powerpoint presentation and discussion of scientific findings, regional impacts and vulnerability assessments, mitigation and adaptation strategies, and economic development threats and opportunities. One meeting in Tillamook County was broadcast daily on community TV for five days.

A University of Oregon graduate student intern developed a climate change e-mail alert system as a way to maintain communication with participants of the briefings and ultimately lead to an on-going web-based discussion board. Articles and event announcements about climate issues relevant to local governments are sent to briefing participants and other persons who have expressed interest. The e-mail alert system has proved to be an interactive way of sharing of new information on climate issues.

CLI helped to facilitate contacts between local governments expressing interest in developing renewable energy projects (wind, biomass, and small hydro primarily) and the Oregon Department of Energy. Plans for 2007 include assisting the development of a consortium of these entities to capture economies

of scale in technical assistance and project development.

CLI also prepared a rural local government climate change handbook for publication and distribution in January 2007. The handbook provides information on scientific findings, impact and vulnerability assessments, carbon inventory methodologies, case studies of mitigation and adaptation strategies adopted by other Pacific Northwest and national municipalities, and web-based resources on climate change.

SPRINGFIELD, OREGON GREEN HOUSE GAS ASSESSMENT

CLI conducted an inventory of the emissions produced within Springfield in 2006. CLI described the methodology and findings of the Springfield inventory in a report that can also serve as a tool to begin a dialogue on how emissions can be cost effectively reduced in Springfield. We hope that local governments in the Eugene-Springfield metro area will refine and continue to update the inventory over time. Additionally, the methodology may be readily used by jurisdictions that are preparing an inventory in-house, without the assistance of a consultant or access to a computer model. This approach is based on the methodology used by ICLEI's Cities for Climate Protection (CCCP) Model, and on accepted national and international protocols.

NEIGHBORHOOD CLIMATE COUNCIL PROGRAM

In 2006, CLI initiated the Neighborhood Climate Council (NCC) to identify the most effective methods to educate and engage households and individuals (in a specific geographic area) in reducing their greenhouse gas (GHG) emissions or carbon footprint.

Most of today's strategies to reduce GHG emissions focus on large sources such as power plants, industrial facilities and vehicles, with the goal of achieving the greatest results from initial efforts. Households, however, are the ultimate end-users of most energy production via home heating, cooling, appliances, food, travel, and embedded energy in products that households purchase. Therefore households, direct-

ly or indirectly, produce significant amounts of GHG emissions. Yet the general public's understanding of climate change is low and few people think they personally can do much about the problem.

This project seeks to identify, share and evaluate effective means of helping households and individuals learn about and take action to reduce their GHG emissions. We hope to determine if a community-based approach can be used to reduce GHG emissions and to establish which community education tools can have the largest impact. For the pilot project, neighborhood associations are the geographic unit through which we are working. Neighborhood association members will learn about and practice reducing emissions, eventually resulting in a collective decrease in emissions in a neighborhood. We hope to refine strategies through the pilot project so that the Neighborhood Climate Councils may eventually expand across the state and region.

Our specific goal is to test different methods of educating households and triggering action to reduce household greenhouse gas emissions



EWEB's Tom West educates Eugene community members on reducing home energy use and greenhouse gas emissions.

Our specific goals are to:

- 1) Substantially increase public understanding of climate change;
- 2) Support household and individual efforts to measure and reduce energy use and GHG emissions (20% reduction for active participants);
- 3) Through 1 and 2, build the market for climate friendly products and technologies;

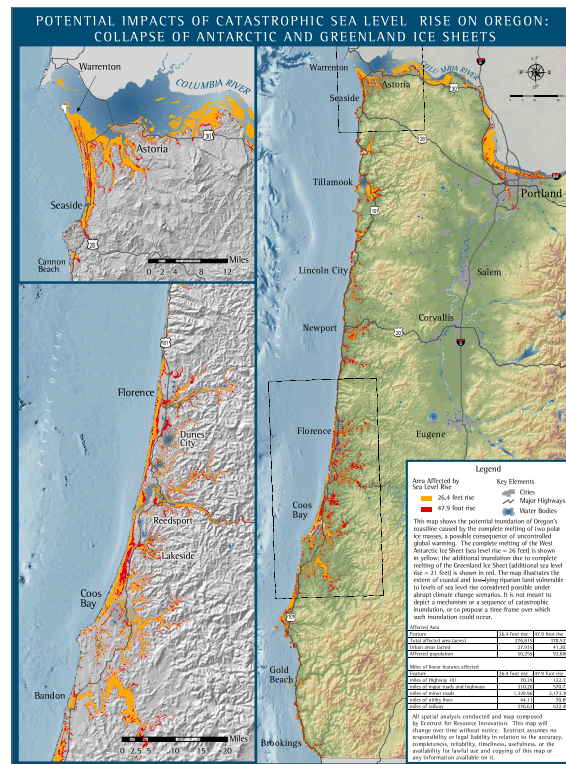
4) Through all of the above, build public support for robust climate policies.

A kick-off event in December drew more than 300 people to hear Secretary of State Bill Bradbury present on climate change on a rainy Monday night. More recently, Eugene Mayor Kitty Piercy mentioned the NCC and suggested a goal of 20% reductions in personal GHG emissions in her State of the City address for 2007. Should the City Council decide to adopt a climate action plan, as recommended by the Sustainable Business Initiative Task Force, the NCC should move the community towards meeting those goals.

A steering committee including representatives from several of our sponsoring organizations, partners and the participating neighborhood associations, is providing guidance and feedback on the program. The list of project co-sponsors and partners is found on page 13.

ABRUPT CLIMATE CHANGE AND THE ECONOMY

Bob Doppelt worked with Lewis and Clarke Economic Professor Eban Goodstein to produce the report, "Abrupt Climate Change and the Economy: A survey with application to Oregon," in May of 2006. Accompanying GIS maps illustrate the inundation caused by 26 and 48 feet of sea level rise, triggered by a potential collapse of the West Antarctic and Greenland Ice Sheets. We found that under the worst-case scenario, the shoreline of the Pacific Ocean would swamp the Columbia and Willamette Rivers, to 14th avenue in downtown Portland. Total acreage inundated would be between 276,000 and 378,000 acres, with 10-15% of that total being urban land. CLI explored three major policy proposals and found that a number of climate protection policies would be good investments to protect against the potential large scale impacts of sea level rise and other increasing risks posed by global warming. The maps and report received favorable coverage in the Oregonian and other media.



Potential Impacts of Catastrophic Sea Level Rise in Oregon.

WILDFIRE AND POVERTY

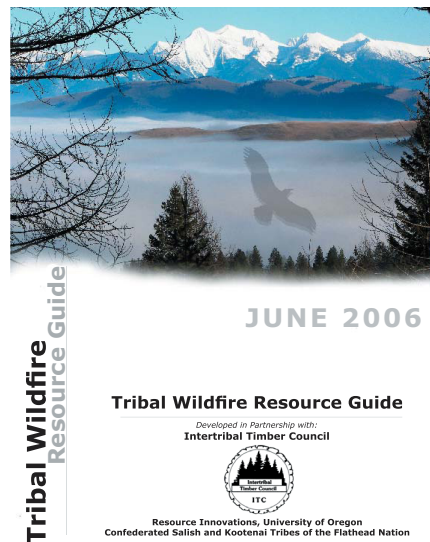
In 2006, Resource Innovations continued its partnership with the National Network of Forest Practitioners and worked to increase agency and congressional awareness of the relationship between wildfire risk, poverty, and the capacity of rural communities to address these problems. Resource Innovations presented on these issues at the 2006 Fire Behavior and Fuels Management Conference in Portland, Oregon, as well as to the National Association of State Foresters at their annual meeting in Reno, Nevada.

In August, Resource Innovations facilitated a workshop with the USFS Pacific Northwest Research Station and the Ecosystem Workforce Program to discuss the outcomes, capacity, indicators and measures associated with fire and fuels management and restoration. Participants included a diverse set of community forestry, business, agency, and community representatives. The USFS Pacific Northwest Research Station will use information from the workshop to refine a set of indicators and measures related to fire and forestry outcomes and community capacity.

TRIBAL EFFORTS

In partnership with the Intertribal Timber Council (ITC), Bureau of Indian Affairs, and the Confederated Salish Kootenai Tribes, Resource Innovations released the Tribal Wildfire Resource Guide at the June 2006 ITC Symposium in Fairbanks, Alaska. In August, Resource Innovations completed an evaluation of the Guide, which illustrated significant praise for the Guide and offered recommendations to strengthen future updates to the Guide. Resource Innovations will work with the Intertribal Timber Council in 2007 to conduct a more thorough evaluation of the guide and update relevant, and release updates at the 2008 ITC Symposium.

In June of 2006, Resource Innovations facilitated a tribal fire and forestry forum, hosted by the Coquille Indian Tribe, for the five Westside tribes in Oregon at the end of June. Participants learned about new resources for fire management and discussed opportunities related to forest stewardship and biomass utilization.



COMMUNITY FIRE PLANNING AND SPECIAL NEEDS POPULATIONS

JOINT FIRE SCIENCES RESEARCH ADVISORY GROUP

Kathy Lynn was asked to participate in a Joint Fire Sciences research project studying collaboration and community wildfire protection plans. As a member of the advisory council, Kathy has assisted the research team in identifying case studies, examining findings and recommendations, and exploring opportunities to inform future policy and programs with the research findings stemming from this effort.

JOSEPHINE COUNTY

Resource Innovations worked with partners involved with the Josephine County Integrated Fire Plan (JCIFP) to document the accomplishments and lessons learned from the special needs fuels reduction grant implemented in 2005 and 2006. The JCIFP, developed in response to the 2002 Biscuit Fire, included specific recommendations to assist low-income, elderly, and disabled citizens, as well as others with special needs. As a result of the plan, Josephine County applied for and received funding from the Rogue-River Siskiyou National Forest and Medford Bureau of Land Management Resource Advisory Councils to subsidize fuels reduction for low-income and senior and disabled homeowners adjacent to federal land. In 2006, Resource Innovations developed a case study to illustrate the goals and objectives in providing assistance with fuels reduc-

COMMUNITY CAPACITY AND THE ENVIRONMENT

tion to Josephine County's special needs population. The study focuses on the benefits, challenges, and impacts of engaging the special needs population in fire protection activities.

RURAL/METRO HARDSHIP PROGRAM

In 2006, Resource Innovations developed a plan to assist Rural/Metro Fire Department to establish a hardship program and provide reduced rates for fire services to low-income residents. Low-income citizens face greater obstacles in attaining and paying for public services, including energy, telephone, and water. The lack of resources to pay for services may also make it difficult for low-income residents to obtain adequate fire protection, particularly those in areas without a tax-based fire district. This plan covers a broad range of efforts, striving to offer greater attention to emergency management issues and accounting for those with special needs during such events. The Rural/Metro Fire Department is now implementing this plan to provide opportunities for low-income residents in their service areas to receive reduced rates for fire services.

SPECIAL NEEDS ASSESSMENT GUIDELINES

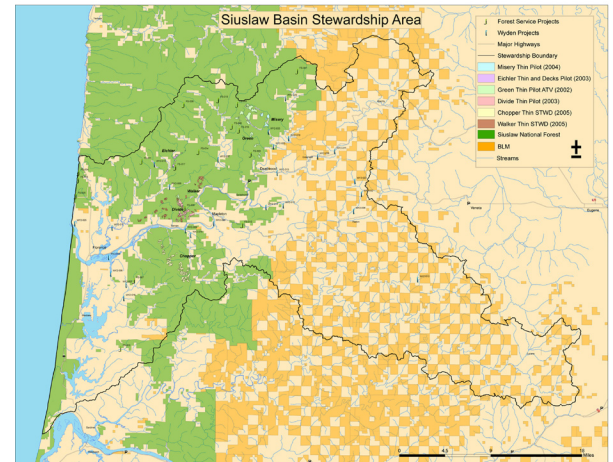
In 2006, Resource Innovations developed a set of guidelines to assist communities and counties in Oregon identify the special needs population in their emergency management and natural hazard mitigation plans. Recent natural disasters in the United States and abroad have reinforced the need to prepare special needs citizens for a variety of disaster outcomes. The intent of this document is to provide a framework for conducting an assessment that will help communities understand the risks faced by special needs populations and the opportunities to best serve community members needing help in times of exceptional distress. Resource Innovations presented these guidelines at the Oregon Emergency Management Association meeting in May of 2006 in Eugene, Oregon.

STEWARDSHIP CONTRACTING

SIUSLAW STEWARDSHIP GROUP: A NATIONAL LEADER IN COLLABORATIVE STEWARDSHIP

The Siuslaw Stewardship Group is a public-private collaborative that aims to restore watershed health and enhance community vitality through the innovative use of federal stewardship contracting. The Group has partnered with the Siuslaw National For-

est to implement several stewardship contracts that are restoring old plantations to diverse forest habitat for spotted owls and marbled murrelet. Resource Innovations helped the Siuslaw Stewardship Group identify and recommend \$470,000 in watershed restoration projects on public and private land using receipts from the sale of restoration by-products. RI also worked to develop a multi-party monitoring program that quantifies the ecological and economic impact of the many restoration projects. Lastly, RI successfully leveraged the Group's experience as a stewardship pioneer to facilitate administrative changes to help make stewardship contracting more efficient and effective.



ALSEA STEWARDSHIP GROUP: BUILDING A FOUNDATION FOR SUCCESS

Successes in the Siuslaw National Forest resulted in interest among partners in the Alsea River Watershed to pursue stewardship opportunities in that area. The decision to develop the Alsea Stewardship Project was an exciting opportunity for Resource Innovations: a chance to build on our already formidable relationships with the Siuslaw National Forest and deepen our expertise in collaborative stewardship and rural community development. In 2006, Resource Innovations facilitated goal setting, mutual learning, and helped the group provide feedback about local ecological and economic priorities to the federal land management agencies. The Siuslaw National Forest offered and awarded the first stewardship project collaboratively developed with the Alsea Stewardship Group in December 2006. The Salem BLM is expected to complete the planning for 8,000-acre restoration project in March and offer their first stewardship contract in summer 2007.



Siuslaw National Forest field tour.

JOSEPHINE COUNTY STEWARDSHIP GROUP: INTEGRATING FIRE PLANNING AND STEWARDSHIP CONTRACTING

The formation of the Josephine County Stewardship Group stemmed from interest among partners involved in the Josephine County Integrated Fire Plan in increasing collaborative forest restoration projects. Resource Innovations' work with the stewardship group focused on developing a clear understanding how the diverse partners would work together. Toward that end, we helped the Josephine County Stewardship Group develop restoration guidelines, conduct three educational field tours and presented a community biomass forum. Our work has resulted in two stewardship contracts offered and awarded by the Medford District BLM and fruitful collaboration with the Rogue River-Siskiyou National Forest on the planning for forest restoration and fuels reduction. In the fall of 2006, Resource Innovations also conducted an extensive assessment of contractor capacity. We analyzed federal contracts over the past four year and interviewed twenty-seven local contractors to gauge their interest and experience in participating in federal contracting, especially stewardship contracting and biomass utilization. The information gathered in the assessment is helping the Josephine County Stewardship Group develop a comprehensive strategy that describes how stewardship contracting could be used to both improve community fire safety and provide local employment.

OREGON DEPARTMENT OF FORESTRY TRAINING

In June 2006 Marcus Kauffman and Kathy Lynn facilitated a one-day training in Prineville to about 40 Oregon Department of Forestry employees. ODF hired

Resource Innovations to help educate them about stewardship contracting on federal land and identify the potential roles that their agency could play in federal stewardship contracting. The State Forester, numerous staff from Salem and all ODF districts attended. The agenda focused on the contracting authorities, collaboration, and local community case studies. It also included guided discussion to help the participants think through how their agency could assist stewardship contracting. Participants were very pleased with the curriculum and excited about taking the lessons learned back to their districts and partnerships.



Rogue-River Siskiyou National Forest field tour.

BIOMASS UTILIZATION

Building off of our work in local communities, Resource Innovations has begun exploring the utilization of woody biomass in Josephine County and the Siuslaw basin. We facilitated a Community Biomass Forum in Cave Junction, which drew over 100 residents interested in learning more about the Rough and Ready Lumber Mill's proposed biomass-energy plant and the use of local forest thinnings as fuel. We are also working with the Three Rivers School District in Grants Pass to assess the feasibility of replacing some of their schools' fossil fuel-burning heating systems with a boiler fueled by woody biomass. Over the next two years we aim to demonstrate and evaluate the "Fuels for Schools" model in western and central Oregon.

We have also identified initial sources of funding to assist our new efforts in biomass utilization. Oregon Department of Energy has contributed \$5000 to

COMMUNITY CAPACITY AND THE ENVIRONMENT

our outreach efforts in Josephine County. More recently, Ecotrust contracted Resource Innovations for \$10,000 to conduct similar outreach to communities in the Siuslaw Basin.



Over 100 interested residents listen intently to speakers at the Cave Junction Community Biomass Forum, held in October 2006.

RURAL VOICES FOR CONSERVATION COALITION

The Rural Voices for Conservation Coalition is comprised of western rural and local, regional, and national organizations that have joined together to promote balanced conservation-based approaches to the ecological and economic problems facing the West. We are committed to finding and promoting solutions through collaborative, place-based work that recognizes the inextricable link between the long-term health of the land and well being of rural communities. We come from California, Oregon, Washington, Idaho, New Mexico, and Montana.

As co-chair of the Institutional Policy Working Group, Kathy Lynn has helped the Rural Voices for Conservation Coalition develop and disseminate issue papers on performance measures and collaboration. Through the partnership with RVCC, Resource Innovations has helped present recommended measures and policy requests to the regional state forester with USDA Region 6, Forest Service and Bureau of Land Management agency leadership in Washington D.C., congressional representatives, and groups such as the National Association of State Foresters. This work is helping to ensure that existing and future forest programs reflect the needs of rural, low capacity communities and that the agencies are monitoring their work in these communities.

Resource Innovations has also been an active participant in the RVCC working groups on stewardship contracting and biomass utilization. Through these groups, we have helped work towards additional training to help agency staff and community members better understand stewardship, outcome oriented performance measures, provide funding to foster increase community collaborative capacity, and strengthen the use of best value contracting.

SUSTAINABLE BUSINESS AND JOB DEVELOPMENT

Resource Innovations helps key business sectors to learn and apply practices and skills to transition towards sustainability and address climate change, with an emphasis on sustainable business cluster development.

The cluster approach to sustainable economic development assists firms to establish communication links with competitors and businesses in similar industries or throughout their entire supply chain. This networking activity is proven to help industry sectors grow by simultaneously stimulating competition and cooperation between firms in the sector, which increases productivity, spurs innovation, and stimulates the formation of new businesses. Our staff use multiple strategies to facilitate inter-firm communication. We have organized business sector meetings to discuss common sustainability challenges and opportunities. We have established and coordinated online communication forums for ongoing networking and the development of collaborative projects that benefit multiple firms in a sector. We research the latest innovations and provide useful information on sustainable practices to sector participants. Finally, our cluster development program serves as a hub for disseminating information on implementation strategies, provides tools for measuring and reporting progress.

CITY OF EUGENE SUSTAINABLE BUSINESS INITIATIVE

Eugene, Oregon Mayor Kitty Piercy launched the Sustainable Business Initiative (SBI) in 2005 with the goal of identifying, establishing, and supporting mechanisms to assist private businesses, non-profits, and other organizations in Eugene to gain competitive advantage and create jobs in the emerging field of sustainable business practices and products. Resource Innovations facilitated all aspects of the SBI, coordinating the public outreach and local government processes.

The process began in April of 2005 when Mayor Piercy convened stakeholders to brainstorm a strategy for

the SBI. The Mayor named a 16-member citizen Task Force to lead the SBI in June of 2005. She charged this group with obtaining ideas from the public and sustainability experts and then making recommendations to the City Council, the private sector, and other local organizations for retaining, growing, and creating Triple Bottom Line sustainable businesses and jobs. A 50-person Technical Advisory Committee assisted the Task Force. Students and faculty from Resource Innovations at the University of Oregon staffed the SBI. Following a year-long process involving countless hours and hundreds of community members, the SBI Final Report and Recommendations were presented to the Eugene City Council on September 25, 2006.

The Task Force developed their recommendations through an extensive outreach process involving over 750 people. This involved two "open houses," meetings with numerous community organizations and two online surveys. In addition, the Task Force held roundtables on the following 12 topics/sectors: green building; education and technical assistance for local businesses; reuse and recycling; financing and funding for sustainable businesses; biofuels; renewable energy; natural and organic foods; sustainability in public education systems; sustainable healthcare; natural products; sustainable forest products; and bicycles. As a result of these activities, even before the SBI Task Force developed its recommendations, a number of private companies, industry groups, local schools and governments took further steps to move toward sustainability.

On November 13, 2006 the City Council adopted a resolution, "publicly committing the City of Eugene to sustainable practices and to businesses that produce sustainable products and services." At the same meeting, the City Council voted to consider the SBI recommendations as a new council priority for 2007 at the beginning of that year. The Council also directed the City Manager to prepare an ordinance to create a sustainability commission as a standing committee; to include funding for an Office of Sustainable Development in the FY08 proposed budget; and to begin recruiting staff for that office as soon as possible, with \$100,000 of startup funding included in the FY07 budget.

SUSTAINABLE BUSINESS AND JOB DEVELOPMENT



FOOD TRADE SUSTAINABILITY LEADERSHIP INITIATIVE

In 2006, Resource Innovations launched the organic and natural food trade sustainable cluster development program. Participants in this industry cluster include businesses from across the food supply chain including food producers, wholesalers, distributors, and retailers. The goal of the program is to develop the capacity of the organic and natural food trade to transition to a sustainable business models. The program objectives are to:

- 1) Expand understanding in the food trade about sustainability;
- 2) Research and share information about successful sustainable business strategies and practices in the food trade;
- 3) Train practitioners in the food trade to implement, measure, and report sustainable business practices;
- 4) Organize and provide opportunities for collaboration and networking;
- 5) Study and disseminate information about the strengths and weaknesses of methods used in the program.

The anticipated outcomes of the program are that a substantially increased number of food businesses will engage in sustainable business practices and these businesses will be well prepared for the challenges of climate change and future energy constraints. In the fall Resource Innovations hired two graduate student interns, Itzel Orozco and Ray Neff, to organize meetings and conduct research for the natural food cluster. By the end of 2006, eighteen natural food businesses had agreed to sponsor the program with donations ranging from \$500 to \$5000 each. In the beginning of 2007, Resource Innovations hosted a day-long seminar in partnership with the Annual Ecological Farming Conference entitled "Food Transportation Challenge and Renewable Fuels" in Pacific Grove, California. In tandem, Resource

Innovations will be publishing a resource guide on improving fleet utilization, alternative power systems, and renewable fuels for medium and heavy-duty truck users. The guide will be made available to the natural food cluster participants, and may also be used with other emerging business clusters.

SUSTAINABLE GOVERNANCE & ORGANIZATIONAL CHANGE

Initially a free-standing program, Resource Innovations' work in on sustainable governance and organizational change has now been incorporated into all of our programs and projects. Director Bob Doppelt occasionally gives lectures and workshops on organizational change and governance, using the concepts and tools describes in his best selling book *Leading Change toward Sustainability: A Change Management Guide for Business, Government, and Civil Society* (Greenleaf Publishing UK, 2003). Just six months after publication *Leading Change toward Sustainability* was deemed "one of the ten most important publications in sustainability" by a Globescan survey of international sustainability experts. Bob is currently completing a new book: *Mind Shift: A Practical Guide for Sustainable Thinking*.



Wintergreen farm in Noti, Oregon

THE RESOURCE INNOVATION GROUP ANNUAL REPORT 2006

Agyeman, Julian, Doppelt, Bob, Lynn Kathy, and Hatic, Halida. "The Climate-Justice Link: Communicating with Low Income and Minority Audiences." Moser, Susanne C. and Lisa Dilling (eds.). Creating a Climate for Change: Communicating Climate Change and Facilitating Social Change. Cambridge University Press, (February 2007).

Bollig, Shaun and Lynn, Kathy. "Guidelines for Conducting a Special Needs Emergency Management Assessment." (May 2006)

Climate Leadership Initiative. "Impacts of Climate Change on Washington's Economy: A Preliminary Assessment of Risks and Opportunities." (November 2006)

Climate Leadership Initiative. "Rural Local Government Climate Change Handbook." (February 2007)

Goodstein, Eban and Doppelt, Bob. "Abrupt Climate Change and the Economy: A Survey with Application to Oregon." (April 2006).

James, Keith, Smith, April, and Doppelt, Bob. "Changing Organizational Ethics and Practices Toward Climate and Environment." Moser, Susanne C. and Lisa Dilling (eds.). Creating a Climate for Change: Communicating Climate Change and Facilitating Social Change. Cambridge University Press, in press.

Lynn, Kathy and Bollig, Shaun. "2006 Josephine County Integrated Fire Plan Annual Report and Updated Action Plan." (September 2006).

Lynn, Kathy. "Collaboration and the Josephine County Integrated Fire Plan." (September 2006) The Western Forester, a publication of the Society of American Foresters.

Rasmussen, Kitty and Lynn, Kathy. "Tribal Wildfire Resource Guide." (June 2006)

Reitman-White, Natalie and Bob Doppelt. "Packaging and Plastics, What's a consumer to do?" The Sound Consumer. (April 2006).

PUBLICATIONS

DONORS, FOUNDATIONS, AND CONTRACTS

CLIMATE LEADERSHIP INITIATIVE

- Jon Lovelace
- Energy Foundation
- Washington Department of Community, Trade, and Economic Development and the Department of Ecology
- Lazar Foundation
- Harder Foundation
- Oregon Community Foundation John Soreng Fund
- Crane Creek Foundation
- Commuter Solutions
- Eugene Water and Electric Board
- Jerry's Home Improvement Center
- Carolyn Foundation

COMMUNITY CAPACITY AND THE ENVIRONMENT

- Ford Foundation
- Flintridge Foundation
- Josephine County
- Jackson County
- MidCoasts Watershed Council
- Cascade Pacific RC&D
- Oregon Department of Forestry
- Rural / Metro Fire Department
- Ecotrust
- Oregon Department of Energy
- Illinois Valley Community Development Organization

SUSTAINABLE BUSINESS AND JOB DEVELOPMENT

LEAD SPONSORS:

- Organically Grown Company
- Cal-Organic
- PCC Natural Markets

CULTIVATING SPONSORS:

- Earl's Organic Produce
- Pro Organics
- CF Fresh
- National Cooperative Grocers Association

AFFILIATE SPONSORS:

- Pioneer Organics
- Jacobs Farm Del Cabo
- New Harvest Organics
- New Seasons Market
- Organics Unlimited
- Co-op Partners Warehouse
- Organic Valley
- United Natural Foods / Albert's Organics

SUPPORTING BUSINESS MEMBERS:

- Heath and LeJeune
- Charlie's Produce
- Stemit Growers
- Sustainable Industries Journal

BOARD OF DIRECTORS

- Susan Burns, Natural Strategies, Inc.
- Larry Chalfan, Executive Director, Zero Waste Alliance
- Bob Elliot, Director, SW Clean Air Agency
- Dr. Paul Courant, Provost, School of Public Administration, University of Michigan
- Katy Eymann, Executive Coach, **Board Vice Chair**
- Jenny Holmes, Director, Interfaith Network for Earth Concerns, Ecumenical Ministries of Oregon
- Wayne Lei, Director, Environmental Management, Portland General Electric, **Board Chair**
- Charles F. Sams III, Tribal Lands Director, Trust for Public Land
- Dr. Noelwah Rose Netusil, Stanley H. Cohn Professor of Economics, Department of Economics, Reed College
- Craig Shinn, Associate Professor, College of Public Administration, Portland State University
- Ernie Niemi, Economist and Principal, EcoNorthwest
- Dr. Jean Stockard, Department of Planning, Public Policy, and Management, University of Oregon
- Margaret Nover, Fund Development Manager, Bureau of Environmental Services, City of Portland
- Melissa A. Wade, Oregon Judicial Department, Citizen Review Board

STAFF

- Bob Doppelt, Director
- Kathy Lynn, Associate Director
- Marcus Kauffman, Program Manager, Community Capacity and the Environment
- Roger Hamilton, Program Manager, Climate Leadership Initiative
- Sarah Mazze, Neighborhood Climate Council Coordinator, Climate Leadership Initiative
- Natalie Reitman-White, Program Manager, Sustainable Business and Cluster Development
- Bill Almquist, Program Assistant, Community Capacity and the Environment

2006-2007 UNIVERSITY OF OREGON STUDENT INTERNS AND FELLOWS

- Coelyn Barry, Department of Environmental Studies
- Shaun Bollig, Department of Planning, Public Policy, and Management
- Rachel Byers, Department of Planning, Public Policy, and Management
- Samantha Chirillo, Department of Planning, Public Policy, and Management
- Melissa Cohen, Department of Planning, Public Policy, and Management
- Jenna Garmon, Department of Environmental Studies
- Daniel Henderson, Lundquist College of Business
- Jenny Hodbod, Department of Environmental Science
- Ben Lubbers, Department of Planning, Public Policy, and Management
- Jessica Neff, Department of Planning, Public Policy, and Management
- Ryan Neff, Department of Planning, Public Policy, and Management
- Amarah Niazi, Department of Planning, Public Policy, and Management
- Ryan Ojerio, Department of Planning, Public Policy, and Management
- Itzel Orozco, Business Administration
- Kirsten Rudestam, Department of Environmental Studies

WEBSITE & GRAPHIC DESIGN INTERNS

- Brian Gundell, Department of Architecture and Allied Arts, Department of Art, Digital Arts Program
- Natalie Waldref, Department of Architecture and Allied Arts, Department of Art, Digital Arts Program

UNIVERSITY OFFICE:

130 HENDRICKS HALL
5247 UNIVERSITY OF OREGON
EUGENE, OR 97403-5247
P: 541.346.0687
F: 541.346.2040

OFF-CAMPUS OFFICE:

PO BOX 51182
EUGENE, OR 97405
P: 541.744.7072

<http://ri.uoregon.edu>