

# Spring Brownout Illustrates Outdated Infrastructure Needs

*Proposed \$500 Million Bond Issue Would Help Reduce Maintenance Backlog*

The April 17 transformer failure that knocked out power for nearly 12 hours to Straub and Earl halls and destroyed electrical motors in various locations is indicative of the outdated condition of the electrical lines and similar behind-the-scenes infrastructure being relied on by UO employees and students, says George Hecht, Campus Operations director.

“This is the kind of infrastructure issue that the proposed \$500 million bond issue for deferred maintenance is intended to take care of,” he says. “We need to speed up reinvesting in our physical facilities—in our aging transformers, utilities, water lines and other underground or out-of-sight things that no one notices until they fail—in order to not lose power or heat at critical times.

“As faculty have integrated more technology into research and teaching, and as computers (and electrical circuits) have become pivotal to student and staff efforts, the costs associated with power losses have become unacceptable,” Hecht remarks.

The mid-April incident, while inconvenient, struck at about 5 p.m. and did not result in injuries to anyone, according to Public Safety and Facilities Services staff. A back-up generator provided power for Public Safety and some emergency lighting in nearby areas.

Hecht says the transformer had had problems recently that had caused Operations and Maintenance to shut it down for testing on two occasions, most recently in February. However, those tests had not indicated

any serious problems and so the transformer had been restarted with no problems.

“We were fortunate that EWEB had a suitable replacement transformer on hand that we could purchase and install that night,” Hecht says, noting power was restored by about 3 a.m. Cost of the April 17 outage, including equipment repairs and replacement as well as staff overtime, was about \$30,000.

Facilities Services’ Ron Bloom, operations manager, and Bob Springer, electrical support manager, agree that such power outages really draw attention to the fact that “we have old equipment out there. As we add to the usage load, the fragile nature of the electrical system inside buildings and behind walls will become even more obvious.”

As reported in the Feb. 19 issue of *Inside Oregon*, the Oregon University System has proposed a constitutional change that would give OUS the authority for 10 years to sell state bonds worth up to \$500 million, to be repaid wholly with state revenue. The funds would enable all seven public university campuses to begin to reduce a huge backlog of deferred maintenance.

The UO share of the backlog amounts to an estimated \$123 million, with the biggest deferred maintenance needs on this campus—about 75 percent of the total—involving electrical equipment and heating-ventilation-air-conditioning (HVAC) systems.

The deferred maintenance bonding authority bills received do-pass recommendations from the Senate Education Committee in February and are now awaiting end-of-the-session decision making by the Ways and Means Committee, according to Tim Black, Governmental Affairs. If the Legislature gives the measure a final OK, then Oregon voters would be asked to approve the constitutional amendment during the May 2004 primary election.

If voters give the ballot measure a thumbs-up, then funds likely would be available beginning in the spring of 2005.

“In the meantime, we’ll continue looking for creative ways to keep the campus infrastructure going,” Hecht says. “However, you can only put off regular maintenance and infrastructure modernization or replacement so long before things begin to catch up with you.”

## UO Continues To Monitor SARS

Using the most current information available from such organizations as the Centers for Disease Control and Prevention (CDC) and the World Health Organization (WHO), the University of Oregon will continue this summer and fall to welcome new and returning students from countries affected by the recent outbreak of Severe Acute

Respiratory Syndrome (SARS). At the UO, where less than 2 percent of all students are from SARS-affected nations (Taiwan, China and Hong Kong), officials have put plans in place to deal with possible SARS cases—but those plans do not include changes in admission rules for students from SARS-affected countries.

continued on page 2

## Course Reserves Deadlines Set

Faculty and GTFs who plan to teach this summer need to submit their course reserves requests to the UO Libraries very soon. Information about placing materials on course reserves, including a link to an online reserves request form, is available at <[libweb.uoregon.edu/acs\\_svc/lwexpl.html](http://libweb.uoregon.edu/acs_svc/lwexpl.html)>, or call the Reserves desk, 6-3067.

To have items placed on reserve by the first day of Summer Term classes, submit requests by the following dates:

- New book/media orders and electronic reserves: Now
- Library books and personal materials: June 9

Reserves request deadlines for Fall 2003 are:

- New book/media orders: Aug. 4
- Electronic reserves: Aug. 11
- Library books and personal materials: Sept. 2

## Kids Sports Camp Sign-up Underway

The Children’s Summer Sports Camp is registering children for its June 23–July 18 session. The camp operates from 9 a.m. to noon weekdays. Children who have finished kindergarten through seventh grades will be grouped by grade and taught a variety of sports and games, including swimming and tennis, by adult instructors. Enrollment is guaranteed until **May 30**, after which sign-ups will be taken on a space-available basis. To register, contact Flo DeLaney at PARS, 6-2777, or e-mail, <[fdelaney@uoregon.edu](mailto:fdelaney@uoregon.edu)>. [j]

## Guess Who’s Invited to Dinner?

University Housing invites faculty and staff to interact with students outside the classroom in one of eight stellar dining venues. Check out what UO students are raving about—dining halls aren’t what they used to be! For information and operating hours, visit <[www.housing.uoregon.edu](http://www.housing.uoregon.edu)>. [j]

## PEOPLE

## IN THE SPOTLIGHT

**Howard J. Carmichael**, Physics courtesy and Oregon Center for Optics member, was given the Max Born Award by the Optical Society of America in recognition of outstanding contributions to theoretical or experimental physical optics. The award consists of a silver medal, a certificate and \$1,500.

**Massimo Lollini**, Romance Languages, is recipient of the Thomas F. Herman Faculty Achievement Award for Distinguished Teaching, while winners of the Ersted Award for Distinguished Teaching are

**Bruce Blonigen**, Economics; **Jonathan Brundan**, Mathematics, and **John Schmor**, Theater Arts. The Herman award honors faculty who have demonstrated long-standing excellence in teaching, while the Ersted award rewards teaching excellence by faculty early in their careers. Recommended by faculty and students, each received a crystal apple during visits by President Dave Frohnmayer and a \$2,000 annual pay raise. They will be recognized June 14 during Commencement.

## IN PRINT/ON DISPLAY

**Tze-Lan Deborah Sang**, East Asian Languages and Literatures, is the author of *The Emerging Lesbian: Female Same-Sex Desire in Modern China* (University of Chicago Press, May 2003).

**Thomas J. Dishion** and **Kate Kavanagh**, Child and Family Center, are co-authors of *Intervening in Adolescent Problem Behavior: A Family-Centered Approach* (Guilford Publications, May 2003).

## IN MEMORIAM

**Lawrence C. Maves Jr.**, Music emeritus, died April 28 in Eugene. A UO alumnus with a diploma in violin performance from the Juilliard School, Maves, 70, joined the UO faculty in 1958. He played in the 7<sup>th</sup> Army Symphony, served as a concertmaster of the Oregon Bach Festival for several years and was a founding conductor of the Eugene Symphony. No services are planned.

## Essay Collection Offers NW Portrait

A new book titled *Best Essays NW* anthologizes work by some of the Northwest's most notable writers as well as fresh new literary voices in an exploration of life in the region.

"These pieces stand alone as lyrical, engaging works of literature, and at the same time come together to form a portrait of the culture and landscape of the Pacific Northwest," says Guy Maynard who edited the volume, along with Portland writer and editor Kathleen Holt. Maynard is editor of *Oregon Quarterly*.

Contributors include Robin Cody, John Daniel, Brian Doyle, Leslie Leyland Fields, Debra Gwartney, Robert Leo Heilman, Lauren Kessler and Kim Stafford. The book begins with a foreword by Barry Lopez, a National Book Award winner.

The essays are drawn from the pages of *Oregon Quarterly* and its annual Northwest Perspectives Essay Contest.

For more information, visit [www.uopress.com](http://www.uopress.com). UO faculty, staff, students and alumni get a 15 percent discount on all UO Press products.



**President Dave Frohnmayer, with David Lung, MARCH '78 (right), visited UO Architecture alumni and prospective students in Hong Kong during a March trip to Asia.**

continued from page 1

## Procedures Expected to Protect Health, Safety of All

Instead, the UO, like other U.S. higher education institutions, follows the Centers for Disease Control and World Health Organization guidelines regarding travel to and from SARS-affected areas and treatment of possible SARS cases, and has emergency preparedness plans that address management of communicable diseases.

"The University of Oregon is making admissions decisions regarding international students with respect to their qualifications and abilities, and without respect to SARS or the presence of the disease in a student's home country," says Vice

## Knight Library Tries 24/7 Program

By Ron Renchler

In response to long-standing requests from UO students, Knight Library will remain open around the clock during Dead Week and Finals Week this spring.

Beginning at 8 a.m. on Monday, June 2, and ending at midnight on Thursday, June 12, the Knight Library will offer a trial 24/7 schedule to accommodate students, faculty and staff who need extended hours for study and research. All branch libraries will maintain their regularly scheduled hours, [libweb.uoregon.edu/acs\\_svc/hrs-acad.html](http://libweb.uoregon.edu/acs_svc/hrs-acad.html), throughout Dead Week and Finals Week.

Students, faculty and staff will be required to show current UO ID to remain in or enter the building from 1–8 a.m. Monday through Friday; from 7 p.m. Friday through 11 a.m. Saturday; and from 7 p.m. Saturday through 11 a.m. Sunday.

During the trial 24/7 program, access to photocopy machines and Information Technology Center (ITC) computers and printers will be available. However, no other services (such as checkout of library

materials, reserves or video checkout and reference desk assistance) will be available during extended hours.

The 24/7 program is being tested at Knight Library this spring to collect some hard data on whether significant numbers of students, faculty and staff will use the library as a study space during extended hours.

"Students have long requested around-the-clock operating hours during Dead Week and Finals Week," says Deb Carver, university librarian. "We have designed this program to minimize the costs of operating Knight Library 24/7 during these two weeks, and we will carefully evaluate the level of use and cost-effectiveness of this service after spring term is over."

Users will be asked to complete exit surveys to assess the effectiveness of the program.

After closing at midnight on Thursday, June 12, Knight Library will be open on Friday, June 13, from 8 a.m. to 6 p.m. and on Saturday, June 14, from 8:30 a.m. to 6 p.m. Knight Library will return to its regularly scheduled intersession hours, [libweb.uoregon.edu/acs\\_svc/hrs-intr.html](http://libweb.uoregon.edu/acs_svc/hrs-intr.html), beginning Sunday, June 15.

For more information, visit the UO Libraries' schedule of hours at [libweb.uoregon.edu/acs\\_svc/hours.html](http://libweb.uoregon.edu/acs_svc/hours.html) or call 6-3054.

Ron Renchler is UO Libraries communications director.

President Anne Leavitt, Student Affairs.

No SARS cases have been diagnosed at the university or in surrounding areas. UO leaders, working in conjunction with state and local public health officials, are confident that current procedures adequately protect the health and safety of university students, faculty, staff and community members.

Though the illness has been largely confined thus far to Asian nations and parts of Canada, the UO is monitoring the disease and taking precautions, such as screening individuals who show SARS-like

symptoms and either have been to those areas or been in contact with people from those regions.

UO leaders encourage all prospective international students—including those from Asian nations where SARS is a problem—to pursue their interest in the school without concern that SARS will prevent them from being admitted.

Admissions information for international students interested in the UO is available online at [admissions.uoregon.edu/](http://admissions.uoregon.edu/). Further details about UO international programs can be found at [oip.uoregon.edu/](http://oip.uoregon.edu/).



MAY 2003						
S	M	T	W	T	F	S
				1	2	3
4	5	6	7	8	9	10
11	12	13	14	15	16	17
18	19	20	21	22	23	24
25	26	27	28	29	30	31

JUNE 2003						
S	M	T	W	T	F	S
1	2	3	4	5	6	7
8	9	10	11	12	13	14
15	16	17	18	19	20	21
22	23	24	25	26	27	28
29	30					

## Wednesday, May 21

**German and Scandinavian Work-in-Progress Lecture:** John McCole, History, "Disenchantment and Reenchantment: Georg Simmel on Religion." 3:30 p.m. EMU Metolius and Owyhee rooms. 6-4051; <darkwing.uoregon.edu/~gerscan/>.

**Honors Halls Panel Discussion:** Fred Crafts, Register-Guard arts reporter and KVAL-TV arts commentator, moderates discussion of "What is Art?" by Music, Art, Landscape Architecture and Journalism and Communication faculty and by Kirk Boyd, Willamette Repertory Theatre artistic director. 7:30-9 p.m. Dymment Lounge, Walton Complex. 6-5414; <honors.uoregon.edu/students/hhab/>.

**UO Ensembles Concert:** The Oregon Wind Ensemble, under the baton of Robert Ponto, and the UO Symphonic Band, directed by Todd Zimbelman, perform. 8 p.m. BH. \$

## Thursday, May 22

**Ruhl Lecture/Payne Awards Recognition:** Tom Rosenstiel, vice chair of the Committee of Concerned Journalists, "Snob Journalism: Elitism Versus Ethics for a Profession in Crisis," as the 2003 Ruhl Lecturer on Ethics in Journalism. 4-6 p.m. GAL. 6-3819; <jcomm.uoregon.edu/departments/payneawards/>. Reception follows in the Allen Atrium. Dean Tim Gleason also recognizes recipients of the 2003 Payne Awards for Ethics

## Symbol/Venue Key

\$: Fee charged. Call for ticket prices.  
 BH: Beall Concert Hall, Music, 6-5678; <music.uoregon.edu>  
 RT/AT: Robinson Theatre/Arena Theatre, Villard Hall, 6-4363 or 6-4191; <darkwing.uoregon.edu/~theatre/>  
 MOA: Museum of Art, 6-3027; <uoma.uoregon.edu/>; closed for construction through 2003  
 MNH: Museum of Natural History, 6-3024; <natural-history.uoregon.edu>; noon-5 p.m. Tuesday through Sunday  
 KG: LaVerne Krause Gallery, Lawrence Hall, 6-2057 or 6-3610; <art-uo.uoregon.edu/dep\_cal.html>; 10 a.m.-5 p.m. Mon-Thu; 10 a.m.-3 p.m. Fri  
 MG: Adell McMillan Art Gallery, EMU Mezzanine, 6-0635; <darkwing.uoregon.edu/~gallery/emu.html>; 7 a.m.-11:30 p.m. weekdays; 10 a.m.-11:30 p.m. weekends during academic terms, variable hours during breaks  
 GAL: Alumni Lounge, Gerlinger Hall  
 PLC: Prince Lucien Campbell Hall  
 KL: Knight Library, 6-3056; <libweb.uoregon.edu/index.html>  
 HC: Hult Center for the Performing Arts, One Eugene Centre, 682-5000; <www.ci.eugene.or.us/Hult/default.htm>  
 EMU: Erb Memorial Union, 6-6061; <www.emu.uoregon.edu/>  
 SRC: Student Recreation Center, 6-4183; <darkwing.uoregon.edu/~pars/facilities/efms\_tour.html>; 6:30 a.m.-11 p.m. weekdays; 10 a.m.-11 p.m. Saturday; noon-11 p.m. Sunday; or as posted  
 Athletic Facilities, 6-4461; 1 (800) WEBFOOT; <www.goducks.com/> AS: Autzen Stadium MC: McArthur Court HF: Hayward Field CAC: Casanova Athletic Center MSC: Moshofsky Sports Center

# Calendar

MAY 21-JUNE 4, 2003

in Journalism, announced at 11 a.m. May 22 in the Chambers Electronic Media Center of Allen Hall.

**Author Reading:** Ariel Gore, founder and editor of Portland's Hip Mama magazine, reads from and signs copies of her latest book, her biography, *Atlas of the Human Heart*. A hip troupe of entertainers accompany Gore. 7 p.m. UO Bookstore. 6-4331, Ext. 228; <www.uobookstore.com/generalbooks/author\_evt.cfm>.

**University Theatre Second Season:** "This Lime Tree Bower" by Irish playwright Conor McPherson is an offbeat comedy that tells the story of three young men from a seaside town near Dublin who give their overlapping recollections of one fateful night. 8 p.m. AT. \$ Tickets on sale 9 a.m.-5 p.m. weekdays at the EMU Ticket Office and 6-8 p.m. on performance days only at the UT Box Office. *Through May 24.*

**UO Choral Concert:** The University Singers, UO Concert Choir, Chamber Choir and Lab Choir, directed by Sharon Paul and Shannon Chase, present "Serenade to Music." The UO Campus Orchestra accompanies one piece. 8 p.m. BH. \$

## Friday, May 23

**Humanities Work-in-Progress Talk:** Sean Malone, Music, "Fugue Revisited: The Role of Analogy in J.S. Bach's 'The Art of the Fugue.'" Noon-1 p.m. 159 PLC. 6-3934; <darkwing.uoregon.edu/~humanctr/>.

**MFA 2003 Artists' Talks:** Chris Rothermel, sculpture, and Peter Happel Christian, photography, preview their May 26-30 show at

the KG. 1-2:30 p.m. HC Jacobs Gallery. 6-2057 or 6-3610; <art-uo.uoregon.edu/dep\_cal.html>.

**Romance Languages Spring Social and Scholarship Awards Ceremony.** 2-4 p.m. GAL. 6-4037; <babel.uoregon.edu/romance/romance.htm>.

**Pierson Lecture:** Sheila Fitzpatrick, University of Chicago, "Soviet Feelings: On the History of Emotions in Stalin's Russia." 2 p.m. KL Browsing Room. 6-4857; <darkwing.uoregon.edu/~history/>.

**Chinese Film Series:** "A Moment of Romance." English subtitles. 4-6 p.m. 115 Pacific. 6-4041; <darkwing.uoregon.edu/~dhg/film.html>.

## Saturday, May 24

**Men's and Women's Track and Field:** Prefontaine Classic. 1 p.m. HF. \$

## Monday, May 26

**MEMORIAL DAY HOLIDAY:** No classes meet and most offices are closed.

**LaVerne Krause Gallery:** MFA photography by Peter Happel Christian and sculpture by Chris Rothermel. Show opening 6-8 p.m. Monday. *Through May 30.*

## Tuesday, May 27

**LAW SUMMER SEMESTER CLASSES BEGIN:** Knight Law Center. 6-3852; <www.law.uoregon.edu/>.

**PEBB Public Forum:** PEBB invites UO employees to participate in this Eugene videconference, during which board members and staff will present and receive feedback about options PEBB is considering in planning for healthcare benefits for 2004 and future years. 10 a.m.-noon. KL Media Services Studio A. To address the board at this or other forums, call 1 (800) 788-0520; <pebb.das.state.or.us/forums.htm>.

**Campus Planning Committee Meeting:** Election of the Campus Planning Committee chair. 2-3:30 p.m. UO Campus. 6-5572; <darkwing.uoregon.edu/~uplan/>.

**UO Ensembles Concert:** Student chamber ensembles, directed by Gregory Mason, present a "Chamber Musicale" of mostly French repertoire. Performing groups include the Cascade Reed Trio. 8 p.m. BH. \$

## Continuing Events

**LaVerne Krause Gallery:** MFA painting and sculpture. *Through May 23.*

**Information Technology Workshops:** 6-1817. *Through May 27.*

**PRIORITY REGISTRATION FOR FALL TERM 2003:** To register online, visit DuckWeb, <duckweb.uoregon.edu>. 6-3243; <registrar.uoregon.edu>. *Through May 30.*

**Registration for EMU Craft Center Spring Workshops.** 6-4361. *Through June 1.*

**MFA 2003 Exhibition:** 11 a.m.-3 p.m. Tuesday through Saturday and during HC performances. HC Jacobs Gallery. *Through June 7.*

**KL East, West Corridors, Special Collections:** "Director's Cut: A Selection from the Papers of James Ivory." *Through June 30.*

**Oregon Bach Festival:** Tickets for the festival's 34th season, set June 27-July 13, are on sale now by mail, fax, in person or online; phone orders 10 a.m.-5 p.m. PDT daily. \$ 682-5000, (800) 457-1486 or 6-5666; fax 6-5669; <www.oregonbachfestival.com>. *Through July 13.*

**Virtual Exhibition:** Photos by 45 artists at <photographyatregon.org>. *Through Aug. 31.*

**Museum of Natural History:** "Preserving the Sights and Sounds of Oregon—The Don Hunter Legacy." *Through Aug. 31.*

## Weekly Events

### Tuesday

- **International Film Series:** Films in their original languages, with English subtitles. 7:30 p.m. 115 Pacific. Yamada Language Center, 6-4011; <babel.uoregon.edu/ylc/Filmseries/filmseries.html>.
  - MAY 27: "Talk to Her," Spain, 112 min.
  - JUNE 3: "Read My Lips," France, 115 min.

### Friday

- **IRC Spring Film Series:** Free popcorn accompanies this term's action films. 7-9 p.m. EMU International Lounge. 6-0887; <darkwing.uoregon.edu/~irc>.
  - MAY 23: "Die Xue Shuang Xiong (The Killer)," 1989 R, Cantonese, 111 min.
  - MAY 30: "Asoka," 2001 R, Hindi, 155 min.
- **Oregon Ballroom Dance:** 7:30-11:30 p.m. 220 Gerlinger. \$ 6-6025; <ballroom.uoregon.edu/>.

*Inside Oregon* is the official newsletter for employees of the University of Oregon and is published monthly in July, August, and biweekly during the academic year. Deadline for all copy is **noon Wednesday** of the week before publication.

Editor in Chief: **John R. Crosiar**

News Editor: **Joel Gorthy**

Published by Media Relations, Room 219, Johnson Hall, 1098 E. 13th Ave.

Mailing address: *Inside Oregon*, Media Relations, 1281 University of Oregon, Eugene OR 97403-1281

Telephone (541) 346-3134; FAX (541) 346-3117

E-Mail [inside@uoregon.uoregon.edu](mailto:inside@uoregon.uoregon.edu)

The University of Oregon is an equal-opportunity, affirmative-action institution committed to cultural diversity and compliance with the Americans with Disabilities Act.

Production by UO Printing and Mailing Services.

 Please recycle *Inside Oregon*.

## Wednesday, May 28

### Caregiver Support Group:

Confidential and educational support for UO community members who are caring for loved ones with any form of senile dementia. No registration required; new members always welcome. Noon–1 p.m. EMU Board Room. \$ 6-2962; [hr.uoregon.edu/workfamily/](http://hr.uoregon.edu/workfamily/). Monthly, except December, on the last Wednesday.

**CSWS Brown Bag:** Sherrie Barr, Dance, “The Play of the Narrative: The Autobiography in Dance Performance.” Noon–1 p.m. 330 Hendricks. 6-5015; [csws.uoregon.edu](http://csws.uoregon.edu).

**University Senate:** Organizational meeting and Wayne Westling Award presentation. 3–5 p.m. KL Browsing Room. 6-3028; [darkwing.uoregon.edu/~uosenate/senate.html](http://darkwing.uoregon.edu/~uosenate/senate.html).

**Scandinavian Studies Work-in-Progress Talk:** Visiting Fulbright professor Louise Wallenberg, Stockholm University, “Straight Heroes with Queer Inclinations: Male Film Stars in the Swedish 1930s.” 3:30 p.m. EMU Rogue Room. 6-4051.

**LERC Lecture:** Robert Zieger, “‘Black and White: United and Fight’? Race and Labor in Modern America.” 4 p.m. GAL. 6-5054; [darkwing.uoregon.edu/~lerc/](http://darkwing.uoregon.edu/~lerc/).

**Trumpet Concert:** Students of George Recker, Stephen Dunn and John Adler present “Festival of Trumpets” featuring solo and ensemble performances. 7:30 p.m. Newman Center, 1850 Emerald St.

**UO Ensemble Concert:** Music’s new Central Javanese gamelan, directed by visiting professor Joko Purwanto, gives its inaugural concert. Ethnomusicologist Mark Levy provides explanatory narration. 8 p.m. BH. \$

## Thursday, May 29

### Learning in Retirement Town Meeting:

State Climatologist George Taylor speaks. 10 a.m.–noon. Baker Downtown Center. 6-0697; [lir.uoregon.edu](http://lir.uoregon.edu).

**Faculty/Staff Fitness Walk:** “Take a Hike” with co-workers and special guests, walking a one-mile campus circuit (rain or shine). Prize drawing follows. Preregistration is encouraged. First 150 registrants get a free gift. Noon–1 p.m. SRC Turf Field. 6-4170; [darkwing.uoregon.edu/~pars/](http://darkwing.uoregon.edu/~pars/).



**History Lecture:** Dylan Rodriguez, University of California, Riverside, “Shadows of the Middle Passage: Carceral Formation and the Political Logic of Mass Imprisonment.” 2 p.m. KL Browsing Room. 6-5905

### Scandinavian Folkdance

**Gathering:** Visiting Norwegian Instructor Linda Gunn coordinates one hour of instruction followed by a one-hour mixer. All ages welcome. 7–9 p.m. Sons of Norway Lodge, 1836 Alder St. 6-4053. Monthly on the fourth Thursday through June.

**Author Reading:** Amit Goswami, Physics retired, reads from and signs copies of his latest book, *Physics of the Soul: The Quantum Book of Living, Dying, Reincarnation and Immortality*. 7 p.m. UO Bookstore. 6-4331, Ext. 228.

## Friday, May 30

**Humanities Work-in-Progress Talk:** Robert Haskett, History, “Dying for Conversation: Tlaxcalan Boy Martyrs and the Evangelization of Mexico in the Sixteenth Century.” Noon–1 p.m. 159 PLC. 6-3934.

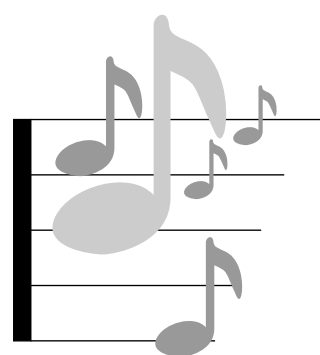
**CSWS Brown Bag:** Undergraduate students Sheerin Shahinpoor, History, and Ryan Clark, Art, join Stephanie Wood, CSWS research associate, in “Undergraduate Research on Mesoamerican Ethno History: The Feminist

Humanities Team in Tlaxcala.” Noon–1 p.m. 330 Hendricks. 6-5015.

**MFA 2003 Artists’ Talks:** Daniel Peabody, art, and Saritdikhun Somasa, visual design, preview their June 2–6 show at the KG. 1–2:30 p.m. HC Jacobs Gallery. 6-2057 or 6-3610.

**University Theatre:** Inspired by Sebastian Brant’s 1494 novel *Narrenschiff*, students, faculty and staff devised a new folly, “This Ship of Fools,” to mark University Theatre’s 1,000<sup>th</sup> production. This original work, directed by John Schmor, uses the conventions of the follies and vaudeville to explore our own current incorrigible “ship of fools” as we sail into a new century. 8 p.m. RT. \$ 6-4363, 682-5000 or 6-4191. *Continues May 31 and June 5–7, with a 2 p.m. matinee June 1 benefiting former UO theater student Noah Smith who is recovering from a traffic accident last November.*

**UO Jazz Concert:** Five UO jazz combos present this year’s final “Jazz Café.” 8 p.m. 178 Music. \$ An after-concert jam session features UO jazz faculty. Light refreshments available for purchase during the evening.



## Saturday, May 31

### Music Technology Concert:

Internationally known composer and clarinetist Burton Beerman and dancer/choreographer Celesta Haraszti join UO student musicians in performing new computer and intermedia compositions created in the Future Music Oregon music technology studios. Jeffrey Stolet directs. 8 p.m. 198 Music. \$

**Green Garter Band Spring Dance Concert:** Features hits of the

1960s, ‘70s, ‘80s, ‘90s and beyond in a high-energy program of musical styles from pop to Latin to hip-hop. The Yellow Garter Band also performs during this GGB and Oregon Marching Band fundraiser. 8 p.m. Agate Auditorium. \$

## Sunday, June 1

**UO Ensembles Concert:** The Campus Band, directed by Paul Cummings, and the Campus Orchestra, under the baton of Franklin Alvarez, perform. The UO Lab Choir, conducted by Eric Gault, joins the orchestra for one piece. 4 p.m. BH.

**UO Ensemble Concert:** The 100<sup>th</sup> Monkey Ensemble performs contemporary instrumental chamber music. 8 p.m. BH.

## Monday, June 2

**LaVerne Krause Gallery:** MFA visual design by Saritdikhun Somasa and art by Daniel Peabody. Show opening 6–8 p.m. Monday. *Through June 6.*

**Officers of Administration Council:** 1:30–2:30 p.m. EMU Umpqua Room. \$ 6-5564; [darkwing.uoregon.edu/~oa/](http://darkwing.uoregon.edu/~oa/).

**UO Ensemble Concert:** The Oregon Percussion Ensemble, directed by Charles Dowd, performs avant-garde classical music by New York composer Meyer Kupferman. 8 p.m. BH. \$

## Tuesday, June 3

**Human Resources Workshop:** “New Employee Orientation.” Preregistration required. 8:30–11:30 a.m. EMU Walnut Room. 6-3159; [hr.uoregon.edu/training/training-events.php](http://hr.uoregon.edu/training/training-events.php).

## Wednesday, June 4

**Dance Quarterly:** Informal showcase of dances by students in Group Choreography, Dance Repertory and Improvisation classes. 7 p.m. Dougherty Dance Theater, Gerlinger Annex. \$ 6-3386; [dance.uoregon.edu](http://dance.uoregon.edu).

**UO Ensemble Concert:** The Green Garter Band performs a wide range of musical styles, from rhythm and blues to jazz to the best of classic and current rock ‘n’ roll. 8 p.m. BH. \$