

APPENDIX A: Task Force Meetings

Meeting Title/Topics – Date

Task Force Meeting #1 - December 2, 2004

- *Organizational meeting*

Task Force Meeting #2 - January 13, 2005

- *Tour of County parks*

Task Force Meeting #3 - January 27, 2005

- *Review resource material; definition of consultant's role*

Task Force Meeting #4 - February 10, 2005

- *Tour of remaining County parks*

Task Force Meeting #5 - February 24, 2005

- *Summarize impressions of County parks; redefinition of consultant's role*

Task Force Meeting #6 - March 24, 2005

- *ODF's Recreational Plan presented; assignment of park inventories to Task Force members*

Task Force Meeting #7 - April 28, 2005

- *Star of the Sea grades 7&8 presentation re: Sigfridson Park; selection of consultant*

Task Force Meeting #8 - May 26, 2005

- *Astoria's Urban Trails presentation; introduction of consultant; planning process, facility inventory; symposium overview; work session on vision, goals & objectives.*

Task Force Meeting #9 - June 30, 2005

- *Review vision, goals & objectives, develop survey questions, review preliminary inventories, develop subcommittees for specific tasks; identify County holdings with recreational potential.*

Task Force Meeting #10 - July 28, 2005

- *Review final survey, review report outline, review symposium checklist, public workshop planning, review objectives and tasks; presentation by Oregon Parks & Recreation Department*

Task Force Meeting #11 - August 11, 2005

- *Work session on Goals & Objectives*

Task Force Meeting #12 - August 25, 2005

- *Review County holdings of potential recreational interest, review recreation inventories, review park inventories, review preliminary survey results, review refined objectives and tasks review, public workshop planning*

Task Force Meeting #13 - September 14, 2005

- *Work session to identify lead responsibility, time frame and priorities*

County Commissioner Update - September 28, 2005

APPENDIX A: Task Force Meetings

Task Force Meeting #14 - September 29, 2005

- *Review existing facility map, survey results, review/develop preliminary comprehensive services plan, public workshop planning*

Task Force Meeting #15 - September 29, 2005

- *Clatsop County trail opportunities, water trail access opportunities, public workshop planning*

Public Workshops

- *#1 - Astoria/Warrenton – location Red Lion Inn - October 6, 2005*
- *#2 - Seaside/Cannon Beach – Community Center - October 13, 2005*

Task Force Meeting #16 - October 27, 2005

- *Review workshop reports, Symposium Plan*

Task Force Meeting #17 - November 10, 2005

- *Parks Financing*

Task Force Meeting #18 - December 1, 2005

- *Symposium Planning, Final Report Status, Recreation Inventory*

Clatsop County Recreation Master Plan Symposium – December 7, 2005

Distribute Draft Master Plan for review - December 9, 2005

Task Force Meeting #19 - December 15, 2005

- *Review Draft Master Plan*

Task Force Meeting #20 - January 10, 2006

- *Review Draft Master Plan*

Task Force Meeting #21 - January 17, 2006

- *Review Draft Master Plan*

Task Force Meeting #22 - January 26, 2006

- *Review final Master Plan, project closeout*

APPENDIX B: 2005 Clatsop County Parks System Park Survey & Summary Report

Results Tally

- Clatsop County's parks system consists of 11 parks and five public boat ramps, comprising 573 acres of land. How often in the last 12 months have you or members of your family used each of the following parks and facilities?

	At least once a week	At least once a month	1-5 times a year	6-11 times a year	Not at all or never	Haven't heard of it
Aldrich Point Boat Ramp			14	1	21	26
Big Creek Park	1		11	1	29	19
Cullaby Lake Park	4		30	6	21	1
Carnahan Park			19	2	23	15
David Douglas Park			8		33	15
DeLaura Beach	2	2	15	4	25	11
Fishhawk Falls/Lee Wooden Pk.		1	16		26	9
John Day Park/Boat Ramp		1	16	6	39	7
Kloutchy Creek Park		2	15	1	26	14
Lewis & Clark River Boat Ramp		1	9		37	13
Nehalem Park		2	12		32	14
North Fork Nehalem Park			7		31	19
Sigfridson Park			2		29	27
Smith Lake Park	1		9		34	15
Sunset Lake Park	1	1	19	4	26	9
Westport Boat Ramp		1	9	3	33	14

- Clatsop County Parks offer our community many recreation opportunities. Do you feel like you have enough information about these opportunities, or would you like more information on the following opportunities:

Currently have	Would like more info	Opportunity	Currently have	Would like more info	Opportunity
17	33	Walking/hiking	26	12	Horseback riding
24	14	Swimming	15	25	Bicycling
22	15	Boating	24	9	Playgrounds
19	21	Picnicking	13	24	Bird watching
21	12	Running/jogging	23	18	Fishing
21	11	Organized sports	19	19	Tent Camping
16	20	Environmental Ed.	24	10	RV Camping

Other: More information about ATV ride areas in Clatsop Co.

- From what source(s) do you currently get information about Clatsop County Parks and Recreation programs? What source(s) would you like to use in the future?

Currently Use	Would like to use	Source of information
11	23	Park Maps
9	24	Web sites
22	12	Newspapers
14	20	Brochures
44	9	Friends/Family/Word of Mouth

Other: Signs in parks, places of employment.

APPENDIX B: 2005 Clatsop County Parks System Park Survey & Summary Report

4. Please put an "X" next to those outdoor activities you or members of your family currently participate in. Also, please circle the three most important activities.

B

54	Walking/hiking	9	Multipurpose sport fields
35	Biking	7	Basketball
4	Horseback riding	3	Tennis
9	ATV	3	Skating
25	Swimming	12	Golf
17	Motorized boating	5	Archery
20	Non-Motorized boating	11	Hunting
32	Fishing	10	Target shooting
36	Beach activities	24	Natural areas & Open Spaces
12	Educational opportunities	10	RV Camping
16	Playgrounds	2	Yurts
32	Wildlife viewing/bird watching	17	Tent camping

Other outdoor activities (not listed above):

Skateboarding, dirt biking, picnicking, big-bore rifle shooting, surfing, running, kite boarding, wakeboarding, dog walking, wildlife photography, car washing and "motorized" walking.

Following are "most-important activities" circled on the surveys:

- Walking/hiking (21)
- Natural areas & open space (2)
- Fishing (12)
- ATV (1)
- Biking (8)
- Playgrounds (2)
- Wildlife viewing/bird watching (6)
- Multipurpose sport fields (2)
- Motorized boating (6)
- Yurts (1)
- Hunting (4)
- Tent camping (1)
- Horseback riding (3)
- Dog walking (1)
- Non-motorized boating (3)
- Wildlife photography (1)
- Beach activities (4)
- Running (1)
- RV camping (4)
- Surfing (1)
- Swimming (3)
- Motorized walking (1)
- Golf (2)

APPENDIX B: 2005 Clatsop County Park System Park Survey & Summary Report

A survey of public awareness and attitudes about Clatsop County Parks and Recreation programs was conducted during August, 2005. Surveys were handed out at key venues, mailed, and accessed online at the Clatsop County Web site. The objective was to obtain information that would be useful in preparing the county's Recreational Lands Master Plan update.

Sixty-five surveys were returned. Nine of these were submitted online. Of the remaining surveys, 26 were from a random mailing to households in Clatsop County.

The results of the survey process are shown below and are based on the total number of respondents (65). It is noted that not every item was responded to on every survey; the results tally is attached with specific detail. Surveys submitted by standard mail or returned in person are available for review, while online results are contained in a drill down report.

Question by Question Review

1. Clatsop County's parks system consists of 11 parks and five public boat ramps, comprising 573 acres of land. How often in the last 12 months have you or members of your family used each of the following parks and facilities?

The most heavily used park is Cullaby Lake Park. 61.5% of all respondents visited the park at least once in the last 12 months.

Four respondents say they visit at least once a week. Only one respondent says he or she hasn't heard of it.

Sunset Lake Park, DeLaura Beach and John Day Park/Boat Ramp rank second, third and fourth. One or more respondents say they visit Sunset Lake Park, DeLaura Beach, Smith Lake Park and Big Creek Park at least once a week.

Sigfridson Park is the least used county park and also scores lowest in name recognition. Only two respondents visited Sigfridson Park in the last 12 months, while 41.5% say they haven't heard of it.

[Note: In written answers to questions (5) and (6), several people, even some who have lived in Clatsop County all their lives, comment that they have NO awareness of most parks listed.]

Results for (1) are shown on the following page.

APPENDIX B: 2005 Clatsop County Park System Park Survey & Summary Report

Parks/facilities ranked by annual use

(% represents overall respondents who visited from "at least once a week" to "1-5 times a year")

Cullaby Lake Park	61.5%
Sunset Lake Park	38.5%
DeLaura Beach	35.4%
John Day Park/Boat Ramp	35.4%
Carnahan Park	32.3%
Klootchey Creek Park	27.7%
Fishhawk Falls/Lee Wooden Park	26.2%
Aldrich Park Boat Ramp	23.1%
Nehalem Park	21.5%
Big Creek Park	20.0%
Westport Boat Ramp	20.0%
Lewis & Clark River Boat Ramp	15.4%
Smith Lake Park	15.4%
David Douglas Park	12.3%
North Fork Nehalem Park	10.8%
Sigfridson Park	03.1%

Parks/facilities with least name recognition

(% represents overall respondents who "haven't heard of it")

Sigfridson Park	41.5%
Aldrich Park Boat Ramp	40.0%
Big Creek Park	29.2%
North Fork Nehalem Park	29.2%
Carnahan Park	23.1%

David Douglas Park	23.1%
Smith Lake Park	23.1%
Klootchey Creek Park	21.5%
Nehalem Park	21.5%
Westport Boat Ramp	21.5%
DeLaura Beach	16.9%
Sunset Lake Park	13.8%
Fishhawk Falls/Lee Wooden Park	13.8%
John Day Park/Boat Ramp	10.8%
Cullaby Lake Park	01.5%

2. Clatsop County Parks offer our community many recreation opportunities. Do you feel like you have enough information about these opportunities, or would you like more information on the following opportunities?

Walking/hiking registered the largest response. Just 26.2% say they currently have enough information about walking/hiking. 50.8% say they want more.

There is also a desire by more than a third of the participants for more information about bicycling and bird watching (38.5% and 36.9%, respectively).

Swimming, boating, horseback riding, RV camping and playgrounds are popular activities but more respondents than not say they currently have enough information about

APPENDIX B: 2005 Clatsop County Park System Park Survey & Summary Report

opportunities in these areas. Hence they show up lower on the list.

Results for (2) are shown below.

Recreation opportunities ranked by interest in obtaining more information

(% represents overall respondents who "would like more information")

Walking/hiking	50.8%
Bicycling	38.5%
Bird watching	36.9%
Picnicking	32.3%
Environmental education	30.8%
Tent camping	29.2%
Fishing	27.7%
Boating	23.1%
Swimming	21.5%
Horseback riding	18.5%
Running/jogging	18.5%
RV camping	15.4%
Organized sports	16.9%
Playgrounds	13.9%

More information about ATV ride areas in Clatsop County was mentioned in the space provided for "other" opportunities.

3. From what source(s) do you currently get information about Clatsop County Parks and Recreation programs. What source(s) would you like to use in the future?

By far the most common method of getting information is through family, friends and word-of-mouth (67.7%). Newspapers rank a distant second.

Currently the least common method is the Internet (13.8%). However, respondents say they would like to make greater use of Web sites in the future. In fact, the sources that they indicate they want to use are directly reversed from those they currently use.

Results for (3) are shown below.

Most-used current sources of information

(% represents overall respondents who "currently use" the source to get information about Clatsop County Parks and Recreation programs)

Friends/family/word of mouth	67.7%
Newspapers	33.8%
Brochures	21.5%
Park maps	16.9%
Web sites	13.8%

APPENDIX B: 2005 Clatsop County Park System Park Survey & Summary Report

Sources they would like to use

(% represents overall respondents who “would like to use” the source to get information about Clatsop County Parks and Recreation programs. Assumption is made that this is in addition to sources currently being used, not in lieu of.)

Web sites	36.9%
Park maps	35.4%
Brochures	30.8%
Newspapers	18.5%
Friends/family/word of mouth	13.8%

4. Please put an “X” next to those outdoor activities you or members of your family currently participate in.

Walking/hiking in this context receives the largest percentage response of any item in the survey (83.1%).

Beach activities and biking are mentioned by over half of the survey respondents, and fishing and wildlife viewing/bird watching by nearly half.

Results for (4) are shown below.

Outdoor activities ranked by participation

(% represents overall respondents who said the activity is one they or members of their family currently participate in)

Walking/hiking	83.1%
----------------	-------

Beach activities	55.4%
Biking	53.8%
Wildlife viewing/bird watching	49.2%
Fishing	49.2%
Swimming	38.5%
Natural areas & open spaces	36.9%
Non-motorized boating	30.8%
Motorized boating	26.2%
Tent camping	26.2%
Playgrounds	24.6%
Golf	18.5%
Educational opportunities	18.5%
Hunting	16.9%
RV camping	15.4%
Target shooting	15.4%
ATV	13.8%
Multipurpose sport fields	13.8%
Basketball	10.8%
Archery	7.7%
Horseback riding	6.2%
Skating	4.6%
Tennis	4.6%
Yurts	3.1%

Also mentioned in the space provided for “other” activities are skateboarding, dirt biking, picnicking, big-bore rifle shooting, surfing, running, kite boarding, wakeboarding, dog walking, wildlife photography, car washing and “motorized” walking.

APPENDIX B: 2005 Clatsop County Park System Park Survey & Summary Report

Outdoor activities ranked by importance

Survey respondents were also asked to circle the three activities that are “most important” to them or members of their family. The number shown next to the activity represents total mentions. Here again, walking/hiking is in the lead with 21.

Walking/hiking (21)
Fishing (12)
Biking (8)
Wildlife viewing/bird watching (6)
Motorized boating (6)
Beach activities (4)
Hunting (4)
RV camping (4)
Horseback riding (3)
Non-motorized boating (3)
Swimming (3)
Golf (2)
Multipurpose sport fields (2)
Playgrounds (2)
Natural areas & open space (2)
ATV (1)
Yurts (1)
Tent camping (1)
Dog walking (1)
Wildlife photography (1)
Running (1)
Surfing (1)
Motorized walking (1) ????

5. Are there any conditions that impact your experience, or that you have conflicts with when using County Parks?

“Lack of knowledge that they exist.” (Astoria)

“We don’t know where the parks are except a few. I thought the county only had 2-3 parks.”

“Offroad/ATVs seriously impact our ability to enjoy the outdoors. They do not mix well with walkers, hikers, cyclists or horses.” (Astoria)

“Only my own constraints about time, money and ignorance.” (Cove Beach)

“We feel that the parks parking should all be free, especially to county residents. We pay enough taxes that we don’t need that fee on top of it.” (Dellmoor Lp Rd)

“We are in our eighties and no longer make use of parks locally but our family does and if we need maps we go to the Chamber of Commerce. We’ve no complaints.” (Gearhart)

“Californians and stupid people that don’t respect other people and property.”

APPENDIX B: 2005 Clatsop County Park System Park Survey & Summary Report

"Leash requirements! We have well behaved springers that love to run. That said, thanks for all your work." (Astoria)

"Price!"

"Lack of horse camps/day riding facilities." (Warrenton)

"Lack of maintenance."

"Lack of restrooms or stalked restrooms." (Astoria)

"The weather." (Hammond)

"Just make sure all users are paying for this use." (Knappa)

"I like clean, well-maintained restrooms." (Seaside)

"I love to tent camp, but sometimes certain parks are too crowded, or they do not have enough open area." (Astoria)

"People not obeying signs." (Olney area)

"Very good parks." (Seaside)

"I grew up here and going to parks to swim was fun. Now we have to pay to get in. So sad for those who are on a tight budget as we were when we were growing up." (Seaside)

"I'm conflicted over paying the fees."

"ADA or stroller accessible; well maintained and safe trails that are long enough in length."

"Toilet paper in the woods; unfortunate but understandable lack of unvandalized toilet facilities."

"Water lilies." (Smith Lake)

6. Do you have anything else you'd like to tell us involving County Parks? Please list any suggestions, comments, issues or concerns.

"We have lived here all our lives and I have never seen any information out on county parks." (Youngs River area)

"I think county parks are seriously under-advertised. I've lived in the county for 20 years and regularly use state parks ... really had NO idea there were so many county parks." (Seaside)

"I am from the local area and have not heard of some sites: need more signage and communication to public." (Hammond)

"All the parks need to be more publicized. Nobody knows about all these parks. Put out more information about the parks and put big signs on them!"

APPENDIX B: 2005 Clatsop County Park System Park Survey & Summary Report

"I'm new to the area and I haven't seen much information except a couple of road signs that are so generic that I don't know if they're state or county or city parks."

"We do not go to any of them anymore where we have to pay to park. We simply don't have the money and feel that it is double taxation." (Dellmoor Lp Rd)

"As seniors we are unable to participate in many strenuous recreational activities, but still enjoy camping in our beautiful forests. We would appreciate more campsites such as those at beautiful Nehalem Falls campground which offers security and maintenance." (Hammond)

"Most county park areas seem more geared to fishermen. Why not clear lake edge at Carnahan to allow access to water and keep that end of the lake at 5 mph?" (Hammond)

"LNG concerns our family and the effects it may have on the river and environment." (Astoria)

"DeLaura Beach provides access to both beach riding and dunes trails, but there's precious little space for trailers. Why not dedicate that particular area to equine recreation and provide trailer parking, some open air stalls, and water." (Warrenton)

"Add soccer-baseball field to Big Creek Park as promised in the past."

"I work at Gearhart-by-the-Sea and we would love to have information about county parks to pass out!" (Warrenton)

"ATV ride areas are needed. A rifle shooting range is needed." (Warrenton)

"I belong to Clatsop County Bassmasters. We use Westport launch which is in need of repairs. I can help secure fishing and enhancement funds from the Marine Board to fix this up. Like you did at Callahan Lake. Warmwater Fisheries right now has a lot of clout with this committee." (Ron Haynes/Knappa)

"I would like to know more about tent camping in less-populated areas. Sometimes the amount of people can be overwhelming. I definitely would camp more at your parks if I knew more secluded areas." (Astoria)

"I enjoy boat ramps such as John Day and Astoria East end. It saddens me to see littering, like fish carcasses, etc. John Day ramp is excellent. The parks are wonderful." (Seaside)

"Sunset Lake Park has no bathroom facilities. That makes it hard when you have young ones." (Seaside)

"I'm excited to try the new Cullaby trail. Would like to see more trails ... Astoria to Seaside???"

APPENDIX B: 2005 Clatsop County Park System Park Survey & Summary Report

"I think I lost my watch at Cullaby Lake. Did you find one there?"

"I think you're doing a great job!"

7. Do you live in Clatsop County?

52 Yes. If so, where?

Astoria (14)	Jewell (1)
Seaside (8)	Knappa (1)
Warrenton (5)	Cove Beach (Falcon Cove) (1)
Gearhart (5)	River Ranch (nr Clatskanie) (1)
Hammond (2)	East County (1)
Svensen (2)	Olney (1)
Brownsmead (2)	Smith Lake (1)
Youngs River (2)	Clatsop Plains (1)
Cannon Beach (1)	Dellmoor Lp Rd (1)

2 No. If not, where?

Nehalem (1)	Neahkahnie (1)
-------------	----------------

8. Would you be willing to volunteer in the parks?

7 Yes, I would like to volunteer to help the parks

46 No, I can't help at this time

APPENDIX C: Public Meetings Summary

October 27, 2005

Two public meetings were held in Clatsop County, Oregon in the fall of 2005. The objectives of these meetings were to gather public comment on preliminary master plan findings and to solicit additional comments regarding issues relating to parks and recreational lands in Clatsop County.

The first meeting was held on October 6, 2005 in the city of Astoria at the Red Lion motel. The second meeting was held on October 13, 2005 in the city of Seaside at the Chisholm Community Center. Both meetings began at 7:00 p.m. and lasted approximately 90 minutes. Public notices, press releases, newspaper articles, and radio play were used to advertise this community event.

Fifteen participants, 5 in Astoria and 10 in Seaside, attended these meetings. In addition, the meetings were staffed by Task Force members and attended by members of the County Board of Commissioners.

Community comments were gathered from questionnaire forms, post-it note statements adhered to displays, and text written directly on maps. Two additional park surveys were completed at the Astoria meeting. A summary of community comment follows:

Park Inventories Comments:

Aldrich Point

"If this area is in close proximity to where Lewis and Clark came across the Columbia River from Washington in later November 1805 to get to the Oregon side, this could be mentioned in a cultural/historical sign."

Carnahan Park

"Widen trail to boy scout camp to be able to mountain bike there and all the way around lake. Mountain bikers would volunteer (to construct)."

"Develop a mount bike system in Carnahan Park."

"Would like to see a multi-use trail for horses, bikers, and hikers."

Cullaby Lake

"Would like to see an (overnight) horse camp here, 8-stalls."

APPENDIX C: Public Meetings Summary

DeLaura Beach

"Would like more parking for horse trailers and large trucks."

"Build parking lot at DeLaura Beach Land and Burma Road"

"We need a bigger and nicer trailer parking area and turn around at Delaura Beach for horse trailers and equestrians"

"Locate parking area farther inland to get vehicles off of sand."

"Existing sand parking area too soft for horse trailers, you need a 4X4 in the winter."

"Riding on beach is not safe in winter because of possible sneaker waves, high water, and soft sand."

"Some trails are not usable in winter because of high water."

"4-wheel drive vehicles are damaging the dunes."

"Walking in Delaura Beach area can be dangerous because of 4-wheel drive vehicles."

"Dumping and vandalism is a continual problem at Delaura."

Klootchey Park

"Road and parking area need to have more gravel and kept up better."

Lee Wooden Park

"Would like a future trailhead parking and tie rail (equestrian) at Lee Wooden Park. OET in cooperation with IDF hopes to make a trail from new Northrop Creek horse camp to Lee Wooden Park in the next few years."

Nehalem Red Bluff

"This might be a good place to develop a trail but where do you park?"

Sigfridson Park

"Who would have known!"

Sunset Lake

"This site is maintained by local residents and not maintained by Clatsop County."

APPENDIX C: Public Meetings Summary

Park System Comments

"ATV park and campground on Nicoli Mountain."

"Need mountain bike park. Norm's Trail already established. Many people from Portland come here to ride mountain bikes."

"Bike trail from Fort Stevens to Seaside!"

"The parks are not well distributed geographically. Are they well placed based upon population?"

"Make Ecola Park bigger, trade for more land?"

"Would like a mountain bike trail in Ecola Park."

"Had no idea that there were so many parks."

"Link trail system in Tillamook Forest to trails in Clatsop Forests. Could be a multi-use trail including equestrians."

"Advertise and promote parks in the weekend section of the Daily Astorian. A different park could be featured each month with directions, amenities, etc."

"Sunset Beach parking area needs more gravel south side for parking as it is too soft for trailers. Need more room to turn around."

"Everyone needs a place to enjoy. ATVs, bikes, horses, and hikers."

"Please develop more multi-use trails."

"Parks need signs."

APPENDIX C: Public Meetings Summary

FOR IMMEDIATE RELEASE
September 26, 2005

Released by:
Brandi Helligso
Volunteer Coordinator
(503) 325-1000

PUBLIC INVITED TO LEARN ABOUT AND VOICE IDEAS FOR COUNTY PARKS

Clatsop County wants to make the most of its parks and recreational lands, and is turning to the public for ideas.

Two public workshops will be held in October to gather input for the planning, design and future direction of the county park system.

A 14-member citizen task force that has been updating the county's parks master plan will host the meetings, scheduled for Thursday, Oct. 6, from 7 to 8:30 p.m. at the Astoria Red Lion Inn, and Thursday, Oct. 13, from 7 to 8:30 p.m. at the Bob Chisholm Community Center in Seaside.

"We look forward to sharing our vision of a countywide system of parks and trails in which the county will be a major contributor," said Carolyn Eady, chairperson of the Parks Master Plan Task Force. "Our members will be in attendance at both meetings to hear your feedback."

The master plan sets the goals and priorities and recommends projects for the county's parks and recreational lands for the next 10 years. The current plan was adopted in 1992. The taskforce is made of

community residents, business and civic leaders, and recreation and education professionals.

At the public workshops, exhibits will show inventories and maps of the county parks, along with each holding's management opportunities and challenges.

The task force will present results of a community survey about the county parks and recreational preferences and present its initial goals, objections and recommendations.

When preliminary survey results indicate that walking and hiking are the most popular recreational activity, the task force decided to emphasize development of trails, Eady said.

Many respondents were unaware of the variety of county parks, which are scattered throughout the county and range from passive use forests to fishing accesses to developed parks with restrooms.

The Task Force is recommending the formation of an on-going Recreational Coordinating Council, which would include representatives from the major public and private recreation providers in the County. This group would be responsible for developing coordinated information about all the various recreation opportunities in the County, including the many trails that are available "to make it easier for visitors and our own residents to discover all that is available," she said.

The task force was appointed by the county Recreational Lands Planning Advisory Committee, a group of citizens appointed by the county commissioners to help guide the county on recreational issues. The group has held a dozen meetings since starting work last December.

APPENDIX C: Public Meetings Summary

The task force usually meets on the last Thursday of the month at 10 a.m. in the Clatsop County Courthouse at 749 Commercial Street in the main floor conference room. The public is invited to attend any session.

For more information about the master plan effort, contact Eady at 755-2617. More information is also available at the county's web site at www.co.clatsop.or.us

-30-

MEDIA CONTACT: Task Force Chairperson

APPENDIX D: Community Symposium

Public Invited to Help Map the Future of Clatsop County Rec Lands

Interested members of the public are invited to be a part of the corps of local citizens exploring the potential of Clatsop County's parks and recreational lands.

The Clatsop County Parks Master Plan Task Force invites the public to a symposium Wednesday, Dec. 7, to help blaze the future of the parks systems in Clatsop County. The task force is updating the county's Recreational Lands Master Plan that sets the goals and priorities and recommends projects for the county's parks and recreational lands for the next 10 years. The current plan was adopted in 1992.

The master plan serves as a background report by inventorying existing recreational facilities, examining general recreational needs and review land-use controls relating to recreational uses. It also serves as a management tool for county-owned lands, providing site-specific management statements and examining the park management structure.

"The symposium will play off the Lewis and Clark bicentennial, a theme that's fun and appropriate," said Mary Blake, a task force member.

"Meriwether Lewis wrote more in his journals about nature and what he discovered in our area than anywhere else on the journey," she said. "Our parks offer a wealth of opportunities for health, fitness and wellness, social interactions, economic gains and environmental stewardship. We want to engage our residents in making this a working document that preserves our most precious and valuable resources now and for the next 100 years."

A child born today could conceivably live to see 2105, Blake noted. The planning done today will affect

the childhood of that child's grandchildren. "We're really setting the tone, vision, the future of the quality of life for generations," she said.

Chairperson Carolyn Eady explains that the task force has been looking at county-wide recreational resources and demand. The symposium will be an acknowledgment and celebration of all the recreational resources in the county, she said.

The symposium will be held at the Rilea Armed Forces Training Center on U.S. Highway 101 south of Warrenton. A meet-and-greet mixer will begin at 5:30 p.m. Dinner featuring elk stew will be served at 6:30 p.m. and followed by the program, presentation and discussions.

There will be a charge of \$18.05 per person for dinner, but there is no cost to participate in the symposium without the meal. Reservations are welcome by calling 503 738-3311, Ext.101.


The task force is wrapping up the work it started last December, including holding public workshops in October and conducting an opinion survey. The 14 volunteers are community residents, business and civic leaders and recreational and education professionals.

Clatsop County owns and operates 11 parks and open spaces and five boat launches comprising 573 acres, as well as other public lands open to recreation. The sites range from passive-use mature forests to fishing access with limited facilities, to more developed parks with restrooms and handicapped-compatible facilities.

The task force is recommending the formation of a continuing recreational coordinating council of representatives from major public and private recreation providers to develop coordinated information about various recreation opportunities, including trails.

More information is also available at the county's web site at www.co.clatsop.or.us

Discover!



Dec. 7, 2005

Wednesday, Dec. 7, 2005
Rilea Armed Forces Training Center
Meet & greet mixer 5:30 p.m.
Dinner 6:30 p.m.
Followed by program, presentation and table discussion
Dinner \$18.05 per person
No charge to participate without dinner.
Please RSVP by calling
(503) 738-3311, Ext. 101.

Hidden presence, undiscovered treasures

Be a part of History!

Our opportunity here started with Corps of Discovery. Meriwether Lewis wrote more in his journal about nature and what he discovered in our area than anywhere else on the journey.


Our parks offer a wealth of opportunities for health, fitness and wellness, social interactions, economic gains and environmental stewardships.

The Clatsop County Parks Master Plan Task Force is an extraordinary corps of local citizens working to preserve our most precious and valuable resource, now and for the next 100 years. We invite you to join us at this symposium.

This meeting location is accessible to persons with disabilities. A request for an interpreter for the hearing impaired or for other accommodations for persons with disabilities should be made at least five days in advance of this event to the Parks Office at (503) 325-9306

"I think it's profound that the same number of people feel the presence of God when they're in nature as when they're in a cathedral or a house of worship."
— Jerry Rogers, Coalition of Park Service Retirees

APPENDIX D: Community Symposium




Clatsop County
Parks Master Plan Task

Discover!

Hidden presence,
undiscovered treasures

December 7, 1805 - 2005



Frank R. Deemport's "Lewis and Clark, West to the Pacific." Painting used with permission of Lewis and Clark Trail Heritage Foundation, Inc. (800) 701-3434 www.lewisandclark.org

Vision Symposium
Wednesday, December 7, 2005
Rilea Armed Forces Training Center
Clatsop Plains, Oregon

Welcome and Purpose

Community Presence

Discover "hidden presence, undiscovered treasures." As we reflect on and commemorate the original Corps of Discovery's nation-building journey, we embark on our own opportunity to shape our region's way of life in the future. This symposium honors the 200th anniversary of the very day on which Lewis and Clark set up camp at Fort Clatsop.

With years of preparation in commemorating the most pivotal exploration in American history, you are here to discuss the Clatsop County Park Master Plan. A plan that can shape our history for the next 100 years! Our parks offer a wealth of opportunities for health, fitness and wellness, social interactions, economic value and environmental stewardship.

It is very important to relay to the citizens of Clatsop County that this plan is for the citizens, by the citizens, now and for the next 100 years. A systematic, cooperative and collaborative approach is being taken in this public process. This plan is meant to serve as a roadway for the development of our parks and contains recommendations for implementation. Your input on this plan is important. This is **your** plan.

Contact: Steve Meshke, Clatsop County Parks Foreman,
(503) 325-9306 or smeshke@co.clatsop.or.us.
Visit www.co.clatsop.or.us

The true "Discovery" by each and every one of us is perhaps what many Native Americans have always felt: that one can never truly "discover" a place, only one's place within it.

Greta Passetti exemplifies active living! She is a vivacious, engaged community leader who is always on the go — walking. The simple act of walking on our park trails helped her shed 50 pounds and return fully to a life of active living.

Margo Lalich and Lujac Desautel believe the community needs to feel a sense of true "ownership" in its parks. Margo is passing her political activism on to her son, Lujac, who is leading the community's dream to build an outdoor skatepark.

Chip Jenkins is the Superintendent of Lewis & Clark National Historical Park. The Corps of Discovery II, 200 Years to the Future, was a partnership drawing worldwide interest and having significant economic value for our community.

APPENDIX D: Community Symposium

Agenda of Events

Trail Mixer
5:30 – 6:15 PM

Welcome & Introductions
Helen Westbrook
Clatsop County Commissioner

Dinner
6:30 PM

Meriwether Lewis, 200 years ago today
Reflections & Community Presence and
Projects

Program

Symposium

Map *Leader* *Recorder*

Observations & Closing Remarks

Gifts

*Redcedar Trees & Photographs

Speakers

Mary Blake, Master of Ceremonies
General Manager, Sunset Empire Park & Recreation District

Helen Westbrook – Welcome Community
Clatsop County Commissioner

Meriwether Lewis

Greta Passetti – testimonial

Margo Lulich & Lujac Desautel – testimonial

Chip Jenkins, Superintendent of Lewis & Clark National
Historical Park - testimonial

Neal Maine – Executive Director North Coast Land
Conservancy – slide show – PacificLight Images

Frank Jagodnik – Executive Director of Oregon
Recreation & Parks Association – vision

Carolyn Eady – Chairperson Clatsop County Parks
Master Plan Task Force, Our County Partnerships

David Sacamano – Community Process Illahee
Group, Inc.

Debbie Boone – Oregon State Representative

Founding Fort Clatsop

December 7, 1805

Work began on the layout and construction of Fort Clatsop. Captain Lewis chose the site in a grove of fir and pine 35 feet above sea level on the bank of a small river now known as the Lewis & Clark River.

Fort Clatsop was named by Captain Lewis for the native people in the area. The Corps of Discovery moved into the new fort on Christmas Eve and stayed through March 23, 1806.

Today we have rich knowledge from the short three-month stay in what is still known as Clatsop, be it Fort or County. Voluminous journal entries describe the land, its plants, animals and people encountered at that moment in time.

Tonight we are documenting **this** moment in time, **December 7, 2005**. Your comments will be the modern-day journals describing our lands, plants, animals and people. Your legacy will live on as has that of the Corps of Discovery for future generations to draw on 50 or 100 years from now.

APPENDIX D: Community Symposium

Summary Comments from Participants

"Let's have full linkage from the north all the way down."

"Don't overdevelop or it'll be like the Portland metro area."

"Strengthen partnerships among all jurisdictions. Get everybody to the table."

"Form a recreation council."

"When people 'buy in' they contribute more."

"If people feel like they own their parks, they take care of them better."

"We need better signage in all of our parks."

"Signs should be aesthetically pleasing and respectful of visitors."

"Figure out how to connect the trails."

"Don't consider parks a luxury. They are vital to our well-being."

"Dog parks are needed."

"We need interconnected parks, both city and county."

"Build on the idea of 'making memories' for children that last a lifetime."

"Too many people don't know about our parks."

"Allow for better access and connectivity."

"Strengthen educational outreach so people have a sense of ownership in parks."

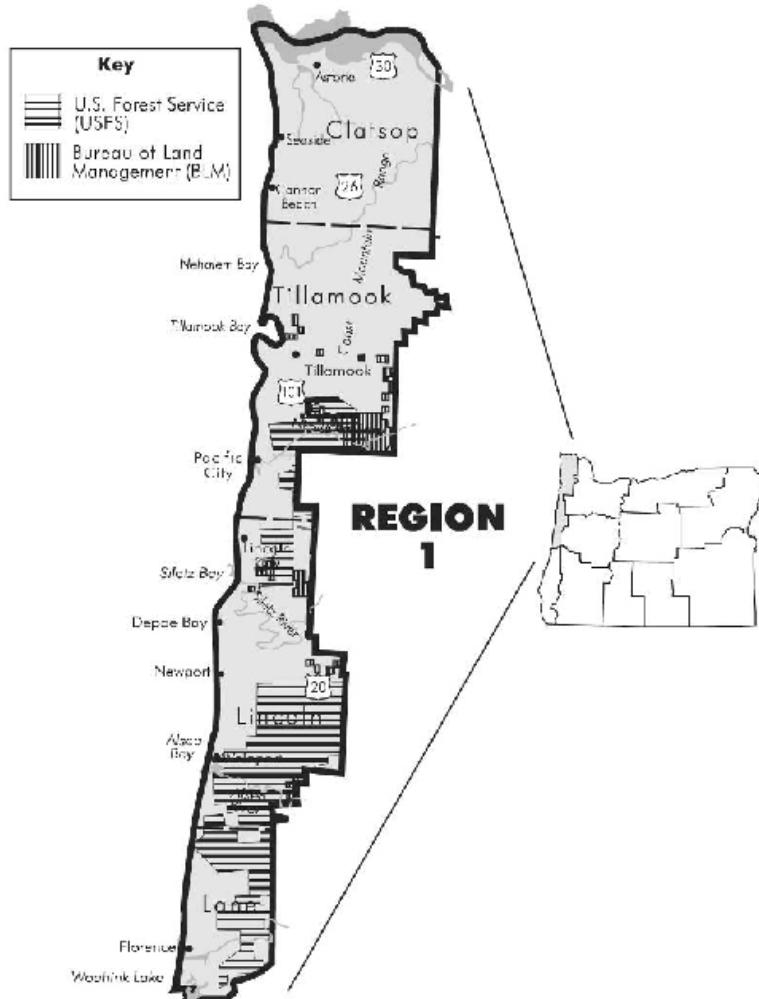
"Provide more multiple-use options."

"Create parks where people ARE ... don't isolate properties."

"Look at benefits, economic and social."

"Make our parks people-friendly, addressing signage, parking, personal safety and restrooms."

APPENDIX E: Top LWCF Priorities: Region 1



SCORP PLANNING REGION 1

(Includes Clatsop, Tillamook, Lincoln and Coastal-Lane Counties)

- Funding priority for additional camping facilities. Need to enlarge existing campgrounds or provide new facilities to offset loss of private facilities that are either converting to time-share management or going out of business. There is also a lack of semi-primitive motorized (car and tent) camping opportunities.
- Funding priority for new river access facilities and rehabilitation of existing river access facilities. There is a lack of developed river access facilities for angling, swimming, kayaking, canoeing and sunbathing. In addition, there is a need for rehabilitation of existing river access facilities.
- Funding priority for additional non-motorized recreational trails. Need for additional recreational trails in close proximity to populated areas. This includes acquisition of land or easements for trails and trail connections. There is also a need for off-highway bicycle trails. At present, there is an increasing demand for hiking, biking, and equestrian trails in the coast range and along the coast. There is also a need for longer trails for multiple-night backpacking trips.

APPENDIX F: SCORP Phone Survey: Disability Information

Disability Information

In the 3rd and 4th waves of the phone survey, residents were asked whether anyone in the household had a physical or mental disability. Of the 3741 households surveyed in these waves, 598 had a household member with a disability. These households were asked about the type of disability, whether that disability affected their ability to utilize Oregon's recreation facilities, and finally asked about what types of accommodation or assistance would be useful to improve their outdoor recreation experience in Oregon. This question asked and resulting information is summarized below.

"NQ15 Does anyone in your household have a disability? Note: A disability is a physical (hearing, sight, walking, etc.) or mental (learning, etc.) impairment that substantially limits their ability to care for themselves, learning, working, thinking or interacting with others, etc.). Non-English speaking is not a disability."

- % of surveyed households with a disability: 16.0% (n = 598, N = 3741)

"NQ16 What type of disability?" (N= 598)

- % physical disability: 80.0%
- % mental disability: 9.8%
- % both physical & mental: 10.2%

"NQ17 Does the disability hamper the persons ability to recreate outdoors in Oregon?"

- % of disabled households hindered in OR outdoor recreation: 66.4% (n = 395, N = 595)

"NQ18 Please tell me any accommodation or assistance that could be offered that would be helpful to the disabled household members to improve their recreational experience?"

- Suggestions for improving access to OR facilities (N = 179 respondents, 684 total suggestions)

Suggestion	% of respondents	number of comments
Paved trails	41%	74
Accessible restrooms	41%	73
Flatter, easier grades	37%	67
Easier access to water (access route to water's edge)	32%	57
Accessible parking	31%	55
Accessible campsites	24%	43
Accessible activities w/in the campgrounds	21%	38
Fishing platforms	20%	36
Access behind closed areas (roads)	16%	28
Provide rental equipment and instruction	16%	28
Proper accessibility to playgrounds, variety of accessible equipment	13%	23
Better ways to communicate (visually or hearing impaired)	11%	20
More designated hunting areas	5%	9
Other	74%	133

APPENDIX G: SCORP: Role Of County Park & Recreation Departments

► CURRENT ROLE:

Counties acquire and develop parks serving citizens of an area larger than a single municipality but less than statewide. Counties provide a substantial amount of the public sector boating access, and RV and camping related facilities around the state. Many of the county facilities are overnight and day use, water-based recreation facilities providing access to lakes, streams and rivers. Most county programs would fall in the mid range of the recreation opportunity spectrum providing developed and semi-developed outdoor recreation opportunities for people in the urban/rural interface. Counties provide a significant amount of the facilities for access to natural resource orientated activities such as camping, hiking, fishing, picnicking, motorized and non-motorized boating, water-skiing, swimming, ATV riding, bicycling, nature study and interpretation.

Significant Resources and Facilities provided by counties include:

- Parks and open space areas including linear parks, waysides, and water access points.
- Overnight camping: RV and tent sites, group areas, dispersed areas, cabins and yurts.
- Day use: Picnic shelters (group and individual), hiking and nature trails, ATV and equestrian facilities, playgrounds, and sports fields.
- Water-based: Boat ramps, piers, docks and moorage.
- Swimming: Beaches, pools and water slides.
- Museums and nature centers: Cultural, historical and natural history.
- Many counties also administer and manage forest resources/timber programs.

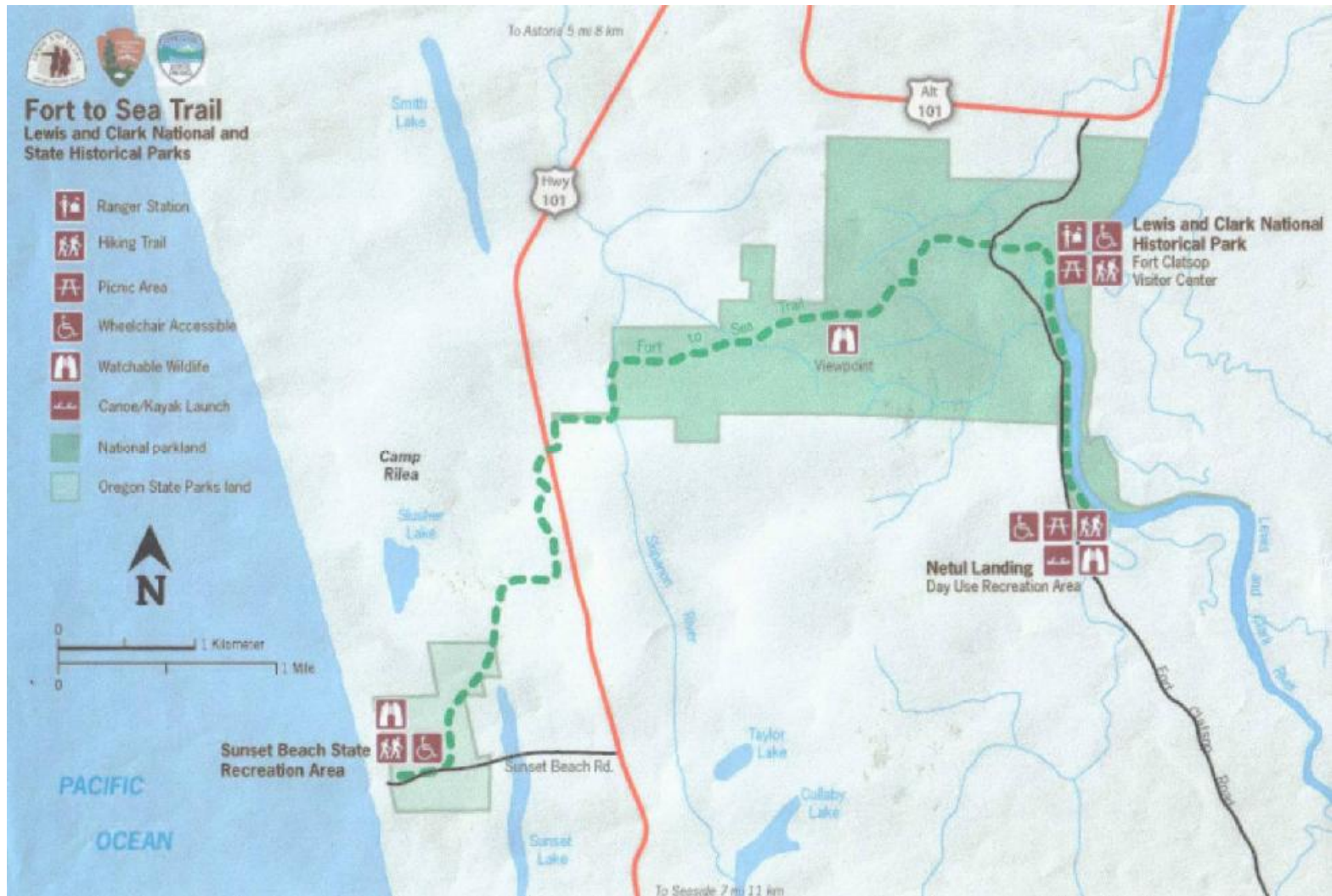
► HOW ROLE MAY CHANGE IN THE NEXT 5 YEARS:

County agencies have been under increasing pressure to be fiscally self-sufficient. With budget constraints and ballot measure constraint, county park systems will be looking for creative ways to generate more revenue in order to be able to maintain their systems. This could lead systems to prioritize revenue-generating facilities over facilities that do not generate revenue or generate very little revenue. Politically it has become very difficult to justify acquiring open space, or construct new day use and dispersed non-motorized boating facilities. Traditionally county recreation facilities have been a place that local families, seniors and lower income people have been able to use with little or no cost. That role could change as counties charge more and more user fees for facility access.

On the brighter side, in more urban areas there will be pressure from community and environmental groups to acquire more open space, especially along the urban fringe. This fringe area, more often than not, falls under the jurisdiction of the counties. Counties in Oregon have traditionally been very conservative and the idea of acquiring areas solely for open space and resource protection has not been a priority. The county's role of providing solely traditional forms of parks will need to evolve. Some counties are already evolving to meet this new role. Benton, Lane and Marion Counties are currently making an effort in this direction.

Counties are also experiencing an increased demand to provide recreation areas/opportunities for ATV and other motorized and non-motorized recreation activities, which are increasingly restricted on Federal lands. These recreationists participate in activities that are often viewed as detrimental to the environment, and are finding it increasingly difficult to locate areas where they can participate in their chosen activities.


APPENDIX H: Local Area Trail Maps



APPENDIX H: Local Area Trail Maps


Warrenton Trails

**Explore them Today
Help Expand them Tomorrow**



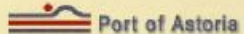
"one of the best ideas anyone has floated on the North Coast."
- The Daily Astorian

In cooperation with





CITY OF WARRENTON

Warrenton Business Association



Port of Astoria

Warrenton and the surrounding area offer a variety of trail experiences for everyone. Explore the Columbia River, visit the dunes and ocean beaches or follow the route of Lewis and Clark over the hills to Fort Clatsop.

We are the Warrenton Trails Association. Our mission is to encourage the use of Warrenton's existing trails, with the goal of connecting them all into a 25-mile loop trail.

Here are three trails you can enjoy today:

The Warrenton Waterfront Trail

(4.3 miles one-way, flat)

The Waterfront Trail takes you along the Skipanon Harbor, past the Warren Mansion, through a shaded wood trail, emerging on the Columbia with a spectacular view of Astoria and Washington state. A detailed map is available at the Warrenton Visitors Center.

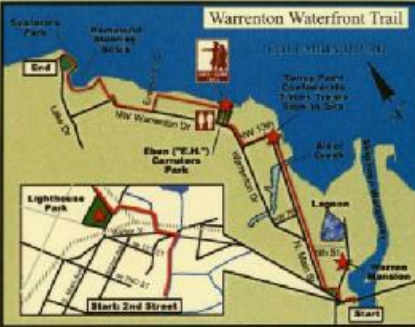

The Airport Dike

(5 miles out and back, flat)

Take Business 101 (Alt 101) north, past Fort Clatsop. Just before the Lewis & Clark bridge there is a gravel parking pull-out on the north side of the road. Don't let the elk-proof fence deter you. You will see that there is an entry point in the fence for human passage. You can walk as far as the gate just short of the Premarq Center.

Fort Stevens

Fort Stevens dates back to the Civil War, providing defense of the mouth of Columbia until WWII. It has 7 miles of paved bike trail, and an additional 5 miles of hiking-only trails. It offers scenic views, historic areas, and campsites. Detailed maps available at the Fort Stevens visitors center



APPENDIX H: Local Area Trail Maps

LOWER COLUMBIA RIVER

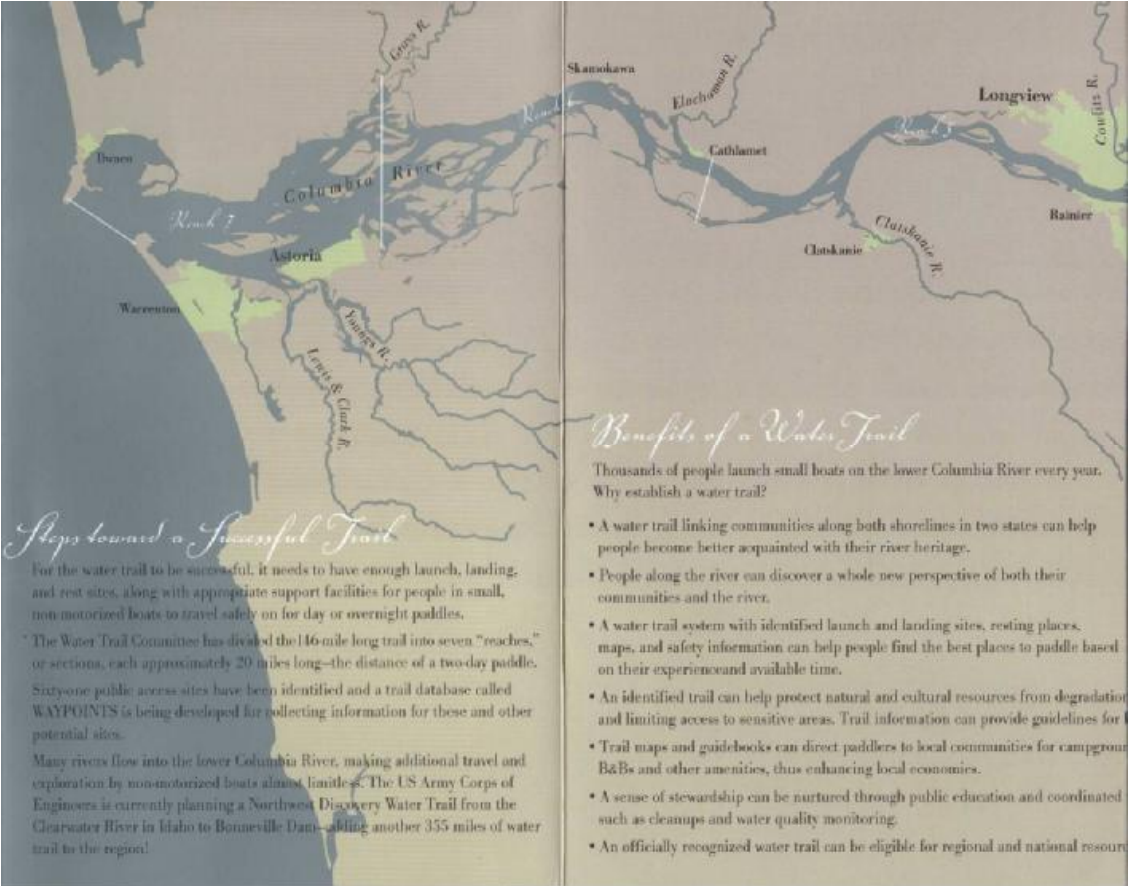
Water Trail

A 146-mile water trail from Bonneville Dam to the Pacific Ocean that people in non-motorized boats can safely travel for day or overnight explorations... a decade-long idea is in the process of becoming a reality.

Paddle past craggy monoliths and rushing waterfalls, wind through a maze of wildlife refuge islands, escape by abandoned salmon canneries, explore Lewis & Clark landing sites, marvel as thousands of snow geese lift off in flight, gaze at immense cargo ships docked in working harbors, encounter contemporary Native American fishing sites...



Neil Sedelmann



Steps toward a Successful Trail

For the water trail to be successful, it needs to have enough launch, landing, and rest sites, along with appropriate support facilities for people in small, non-motorized boats to travel safely on for day or overnight paddles.

The Water Trail Committee has divided the 146-mile long trail into seven "reaches," or sections, each approximately 20 miles long—the distance of a two-day paddle. Sixty-one public access sites have been identified and a trail database called WAYPOINTS is being developed for collecting information for these and other potential sites.

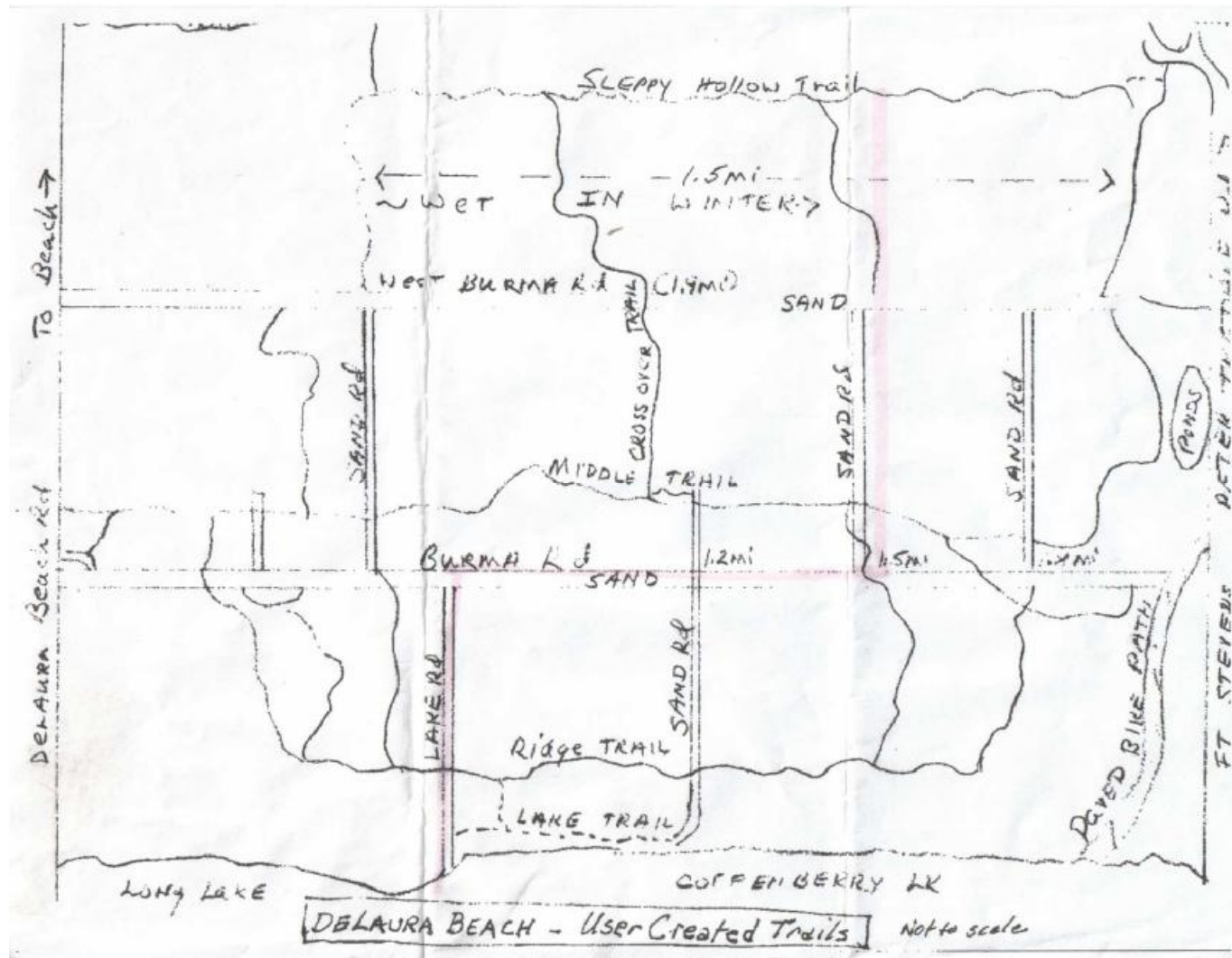
Many rivers flow into the lower Columbia River, making additional travel and exploration by non-motorized boats almost limitless. The US Army Corps of Engineers is currently planning a Northwest Discovery Water Trail from the Clearwater River in Idaho to Bonneville Dam—adding another 355 miles of water trail to the region!

Benefits of a Water Trail

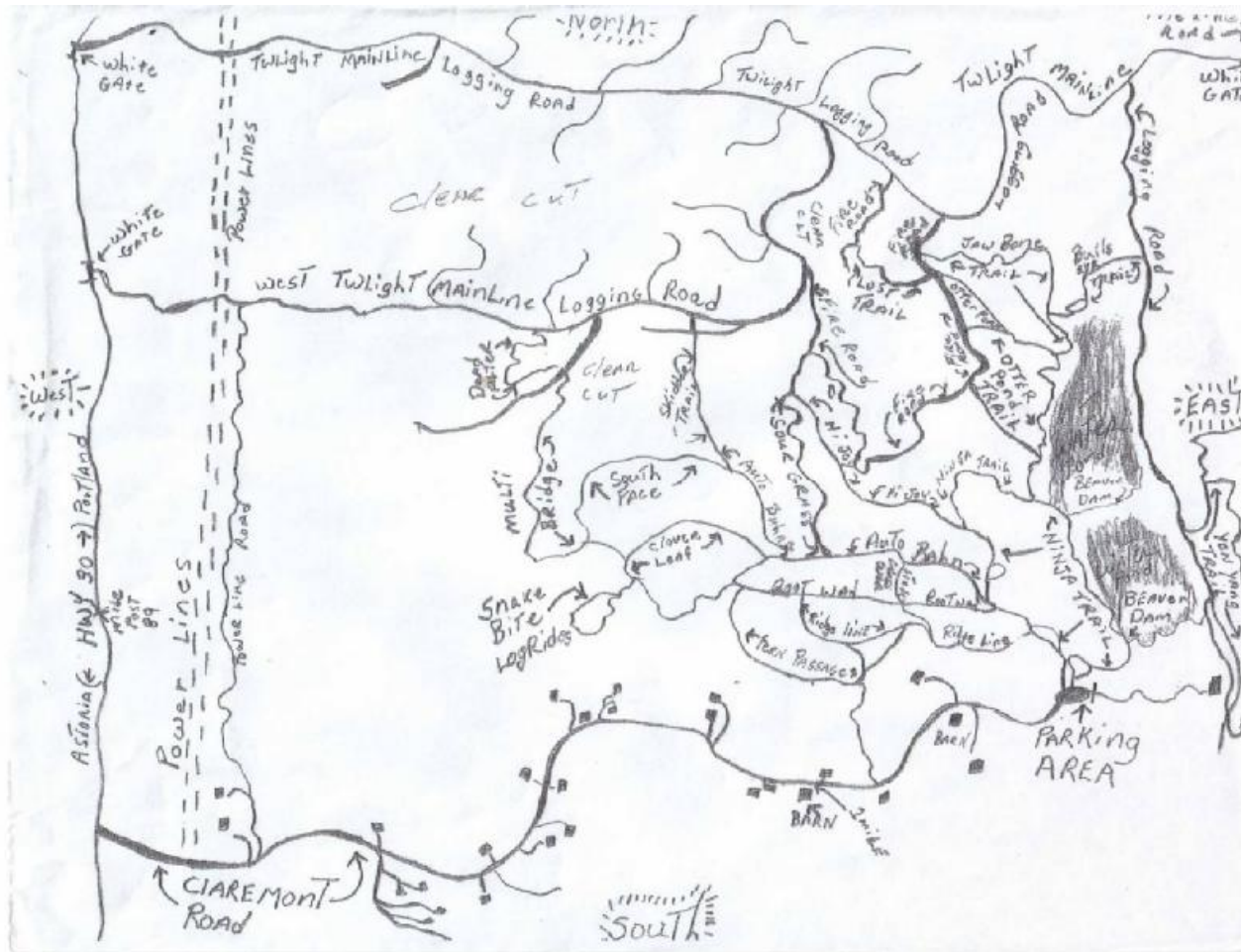
Thousands of people launch small boats on the lower Columbia River every year. Why establish a water trail?

- A water trail linking communities along both shorelines in two states can help people become better acquainted with their river heritage.
- People along the river can discover a whole new perspective of both their communities and the river.
- A water trail system with identified launch and landing sites, resting places, maps, and safety information can help people find the best places to paddle based on their experience and available time.
- An identified trail can help protect natural and cultural resources from degradation and limiting access to sensitive areas. Trail information can provide guidelines for
- Trail maps and guidebooks can direct paddlers to local communities for campground B&Bs and other amenities, thus enhancing local economies.
- A sense of stewardship can be nurtured through public education and coordinated such as cleanups and water quality monitoring.
- An officially recognized water trail can be eligible for regional and national resources.

APPENDIX H: Local Area Trail Maps

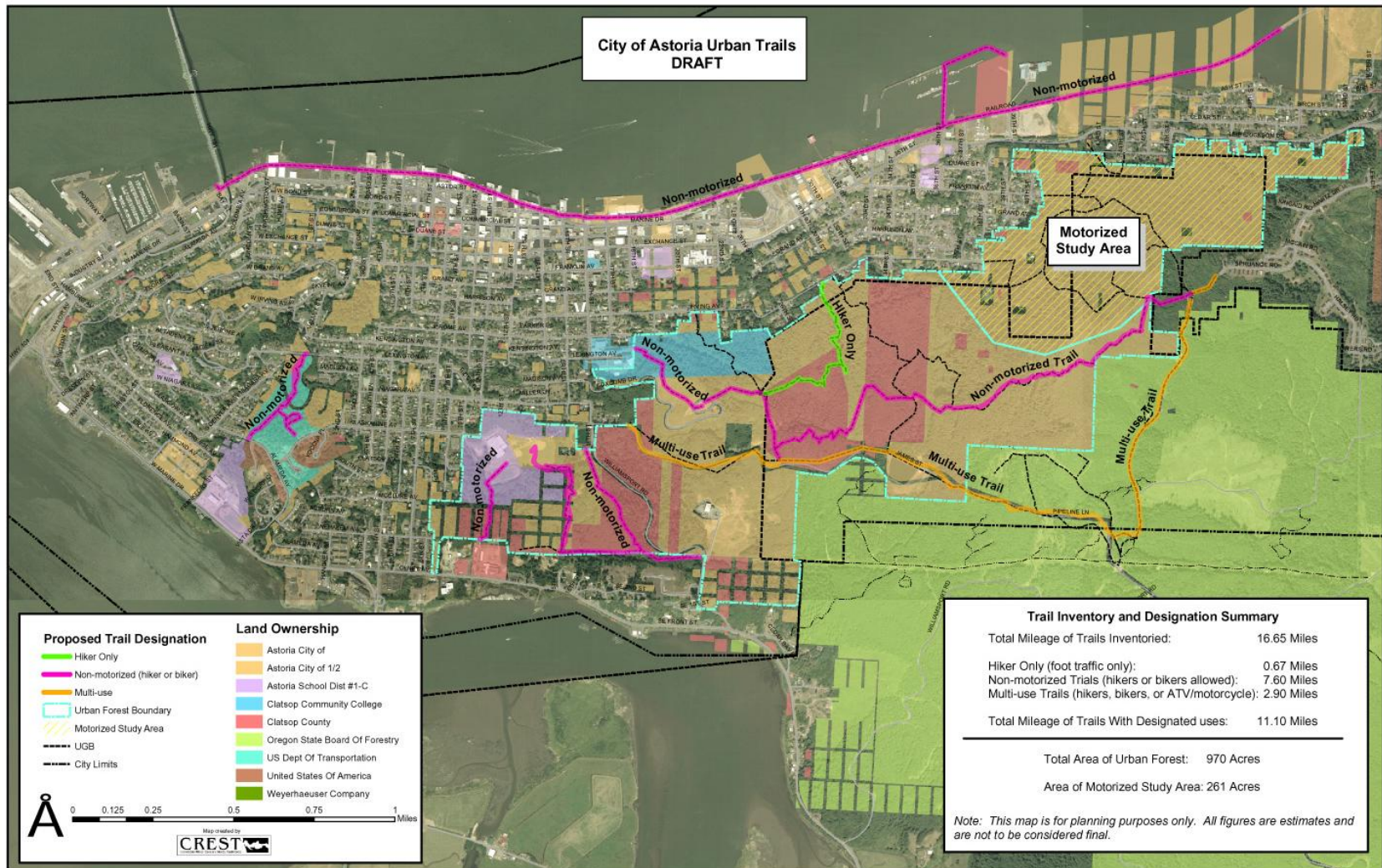


APPENDIX H: Local Area Trail Maps



'Norm's Trail' Popular urban area trail on ODF forestland off Hwy. 30

APPENDIX H: Local Area Trail Maps



APPENDIX I: Recreation Map and Rules: Astoria District - ODF

ACTIVITY ZONES: DESIGNATED ACROSS FOREST

We all enjoy recreating out in the forest. Each of us has our own special activity that we enjoy participating in regularly.

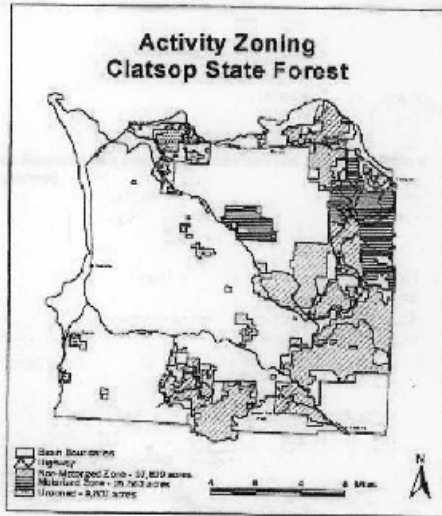
Unfortunately, both motorized and non-motorized activities affect other resources and users. Some of the affects on resources may be increased water turbidity, soil compaction, sanitation problems, litter, reduction of understory vegetation, and reduced site productivity.

Often times, competing users in the same area reduce the user experience.

Activity zones were designated across the Clatsop forest to contribute to minimizing these affects across the forest landscape.

The designation of the zone boundaries involved many components including the following criteria:

- Existing use patterns
- Protection of natural resources
- Soil and topography constraints
- Consideration of private landowners, neighbors, and inholdings
- Location of sensitive, threatened, or endangered wildlife species



What does this mean?

The activity zone boundaries include 3 categories:

- 1) Non-Motorized Activities
- 2) Motorized Activities
- 3) Not-designated areas

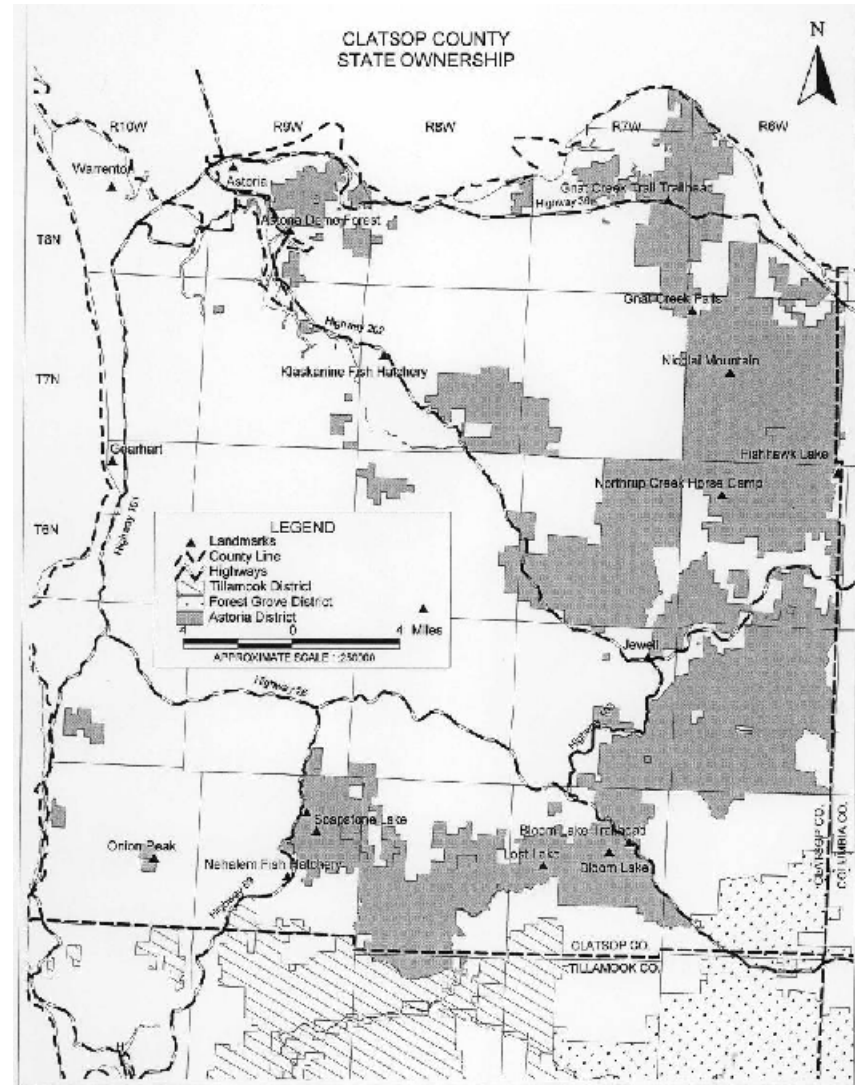
Trails developed and designated in a non-motorized zone will only be for hiking, mountain biking, equestrian riding, and other non-motorized activities. Motorized use in a "non-motorized zone" will be confined to surfaced roads only.

Trails designated in a motorized zone will focus on motorcycles, all-terrain vehicles, and four-wheel drive vehicles. Trails may be designated for all three activities or ATV and motorcycle only. Motorized use in the "motorized zone" of the forest is to be confined to surfaced roads and officially designated, signed trails.


Areas that are in a "not-designated area" will be considered for zoning in the future after issues concerning access and impacts to private landowners are resolved. Motorized use in these areas is confined to surfaced roads only.

Goals of Activity Zoning

- * Minimize resource impacts
- * Reduce conflicts between different users
- * Reduce conflicts between users and forest management activities
- * Strive to accommodate recreation demands



APPENDIX I: Recreation Map and Rules: Astoria District - ODF



DISPERSED CAMPING

Rules and regulations to follow when recreating on the Clatsop State Forest.

The following rules are cited from OAR 629-25-040 and OAR 629-25-005.

629-25-040 General Forest Recreation Rules

(1) Sanitation:

- (a) On all state forest lands, no person shall, unless otherwise authorized:
 - (A) Dispose of any cans, bottles and other non-flammable trash and garbage except in designated places or receptacles;
 - (B) Dispose of flammable trash or garbage except by burning in authorized fires, or disposal in designated places or receptacles;
 - (C) Drain sewage or petroleum products or dump refuse or waste other than wash water except in places or receptacles provided for that purpose;
 - (D) Dispose of any household, commercial or industrial refuse or waste brought as such private or municipal property, including but not limited to automobiles, household appliances and furnishings;
 - (E) Pollute or contaminate water supplies or water used for human consumption; or
- (b) No person shall wash any clothing, dishware, cookware, or other materials in any lake, stream, river, or other body of water on State Forest land.
- (c) No person shall deposit human waste within 100 feet of any campsite, trail, or body of water. Human waste shall be disposed of by burying to a depth of at least 6 inches.

(2) Occupancy and Use. On State Forest lands, no person shall:


- (a) Camp longer than 21 days out of any 28 day period, or the period of time permitted by the Forester;
- (b) Camp within 25 feet of any body of water; or
- (c) Leave personal property unattended longer than 4 days. Personal property left unattended longer than 4 days, without permission of the Forester, shall be removed by the Department and shall be disposed of by the Forester as provided by law.
- (d) Leaving personal property unattended will be considered camping for the purposes of determining the length of stay at a given site.

- (3) **Property and Resources.** On all State Forest lands, unless otherwise authorized by the Forester, no person shall:
 - (a) Deface, disturb, remove or destroy any public property, structures, or any scientific, cultural, archaeological or historic resource, natural object or area.
- (6) **Firewood Collection.**
 - (a) Persons engaged in lawful camping activity may collect sufficient firewood for their personal use while camped on State Forest land, except where otherwise prohibited to remove in these rules.
 - (b) No person shall be permitted to remove from State Forest land firewood which has been collected for use while camping on State Forest land, without a valid firewood permit.
 - (c) Firewood shall be collected only from dead and down material that is 12 inches or less in diameter at its largest point. No standing trees, living or dead may be felled for conversion into firewood without a valid firewood permit.
- (7) **Campfires.**
 - (a) Fires shall be confined to camp stoves or fire rings or other fireproof structures constructed for such purposes. Such structures shall not exceed four feet in diameter.
 - (b) All flammable material shall be cleared for a distance of 5 feet around and 10 feet above any fire ring or other structure used to contain a campfire.
 - (c) No fire shall be left unattended and every fire shall be extinguished before its user leaves the site.

DEFINITIONS
629-25-005 As used in rules 629-25-000 through 629-25-070:

- (1) "Campground" means an area designated by the Forester.
- (2) "Camping" means occupying State forest lands overnight.
- (3) "Camping Area" means an area designated by the Forester for overnight camping, without designated campsites.

"Dispersed Camping" refers to camping on State forest lands, which is not a campground or camping area designated by the Forester.



If you have any questions or comments, please contact the Oregon Department of Forestry at (503) 325-6451

APPENDIX J: Recreation Map and Rules: Weyerhaeuser Forest Lands – Clatsop County

Maps

A detailed recreation map may be purchased from our North Coast office during the hours of 9:00 am to 4:00 pm, Monday –Friday. Many local sporting goods stores also sell them.

The Many Values of Sustainable Forests

Weyerhaeuser sustainably manages millions of acres of commercial forests in the United States and Canada. The company grows and harvests trees in perpetual cycles to supply the wood and paper products people want and need. Weyerhaeuser also works to protect the many other values forests provide society, including fish and wildlife habitat, water quality, aesthetic values and recreational opportunities. To date, 25.5 million acres (10.3 million hectares) of forests that Weyerhaeuser manages in Canada and the United States have been certified to internationally recognized standards for sustainable forest management practices

March 2005

Welcome to Weyerhaeuser North Coast Timberlands

North Coast Public Access Policy



Welcome to Weyerhaeuser's North Coast Timberlands

People enjoy the benefit of outdoor recreation on Weyerhaeuser land year-round.

Our number one concern is **SAFETY**. It is extremely important to us that all users of our timberlands follow and adhere to safe practices.

We are committed to practicing sustainable forestry. This means we manage forestlands for the sustainable production of raw materials while protecting water quality, fish and wildlife habitat and soil productivity; also cultural, historical and aesthetic values. In order to meet our safety and environmental objectives it may require limiting public access to some areas during certain time periods.

Weyerhaeuser's Public Access Policy

Safety

Our foremost priority is the safety of our employees and visitors. Our roads are designed for forest-management purposes, not for public use. Heavy trucks and other vehicles use our roads on a daily basis.

- Speed Limit no greater than 25 MPH.
- Headlights and seatbelts on at all times.
- Obey all posted signs; don't go into areas posted "Stop Logging Operations Ahead"

Weyerhaeuser's timberlands in Clatsop County are open during daylight hours to the public for non-motorized recreational use.

Some areas will be open during day-light hours for motorized access during specific hunting seasons on rocky roads. Roads not open to motorized access will be gated and/or signed. Weyerhaeuser will coordinate with State wildlife agencies to open timberland to motorized and non-motorized access during fall hunting seasons provided that the fire danger is at an acceptable risk as determined by Weyerhaeuser.

Public access is restricted when necessary to protect our land from public abuses, protect wildlife in cooperation with resource agencies, or protect the safety of our workers on active work/haul routes.

Public access may be discontinued without advanced notice.

Please behave responsibly, observe all postings and report abuses. This will allow us to keep many areas open.

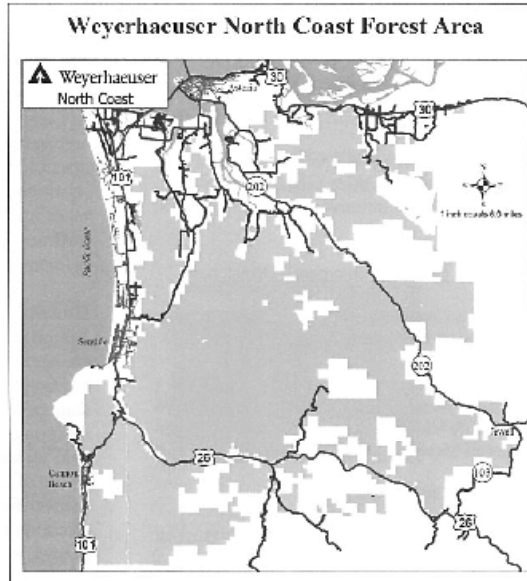


APPENDIX J: Recreation Map and Rules: Weyerhaeuser Forest Lands – Clatsop County



RECREATION ACCESS RULES

- No motorized vehicles off rocky roads.
- Vehicles must travel only on improved roads.
- No fires or camping
- Access is allowed ONLY during daylight hours.
- DURING HIGH FIRE DANGER ALL PUBLIC ACCESS WILL BE PROHIBITED.
- Access may be restricted at any time due to active operations.
- Drug and alcohol use is prohibited.
- Parked vehicles should not block roads or gates.
- No forest product removal is allowed except berry picking for personal use.
- Pack out your trash.
- No Target Practicing



Help us protect our forests by reporting incidents of dumping, theft, or vandalism

Clatsop County Sheriff
503-325-2061

IMPORTANT PHONE NUMBERS

Emergencies..... 911

Wildfire reporting Oregon Department of Forestry, Astoria Office,503-325-5451
Fire Regulation Information.....503-325-7215

24 Hour Non-emergency Dispatches

Clatsop County Sheriff.....503-325-2061
Oregon State Police.....503-325-2231

Oregon Department of Fish & Wildlife:
Astoria Field Office.....503-338-0106
Wildlife Violations.....1-800-452-7888
Jewell Meadows Wildlife Area...503-755-2264

Weyerhaeuser:

North Coast Office.....503-738-6351
North Coast Security.....503-738-2439
Public access hotline.....1-888-741-5403

Other Weyerhaeuser contact information

Weyerhaeuser is committed to protecting forest resources that are so important to all of us. For more information about Weyerhaeuser or our forest management practices, visit our website, www.weyerhaeuser.com.



Fire season

Weyerhaeuser may temporarily close its lands to all public access during extreme fire conditions. Closures will be communicated in advance whenever possible through recorded messages, postings at entrance points and in selected news media. Call our public access hotline at 1-888-741-5403 for up-to-date information.

Hunting

A high percentage of our roads and lands are open during general deer and elk hunting seasons. Depending on the fire danger level, each year we open designated gates the morning of general rifle season. Hunters must be acutely aware of their surroundings and take precautions not to trespass or shoot in the direction of active-work areas or other private property.

For more information about access during hunting seasons, call the public access hotline number.

Motorcycles, Quads and other Off-Road Vehicles

These are not permitted at any time on North Coast Weyerhaeuser property. Under no circumstances should trails be built around gates or from neighboring properties in order to gain access. This is considered trespass and will be subject to prosecution.

APPENDIX K: Tillamook and Columbia County Camping Fees

CHECK IN TIME: 4:00 p.m.
CHECK OUT TIME: 1:00 p.m.

COLUMBIA COUNTY PARKS' FEES - 2005

Usage	Peak Season Effective May 1 st thru. Oct. 31 st	Off-Season Effective Nov. 1 st thru. April 30 th
Day Use (20 minutes or longer)	\$2.00 per motor vehicle	
Campsite w/hookups	\$18.00 per night	\$15.00 per night
Campsite w/out hookups	\$14.00 per night	\$12.00 per night
Campsite @ Scaponia Park only	\$9.00 per night	\$6.00 per night
Adirondacks @ Camp Wilkerson	\$20.00 per night per adirondack	\$16.00 per night per adirondack
Each additional tent, RV or vehicle per campsite on overnight camping	\$7.00 per night	\$4.00 per night

Bicyclist/Hiker	\$5.00 per person per night
Non-Refundable Campsite Deposit	Equal to one night's stay
10% Discount to Senior Citizens (Age 60 or over)	On camping only
Reservation of Picnic Areas	\$20.00
Reservation of Covered Picnic Areas	\$30.00
Reservation of Lodge @ Camp Wilkerson	\$100.00 per day (includes 8 vehicle permits)
Reservation of Schoolhouse @ Camp Wilkerson	\$100.00 per day (includes 8 vehicle permits)
Reservation of Cabin @ Hudson (60 person Maximum use in cabin)	\$100.00 per day (includes 8 vehicle permits)
Refundable Cleaning Deposit for Picnic Area/s	\$25.00
Refundable Cleaning Deposit for Covered	\$100.00

APPENDIX K: Tillamook and Columbia County Camping Fees

Buildings	
Sewage Dump	\$5.00 non-patron
Firewood	\$4.00 per cubic foot bundle
Showers (for non-camping individuals)	\$2.00 per person, per shower
Annual Day Use Pass @ Prescott Beach Only (good January 1st through December 31st)	\$ 20.00

	people. After eight, a second site must be used.
note 2	Maximum number of vehicles per site is two (2) vehicles and one (1) towed vehicle (additional vehicle fee/s still apply). Maximum number of RV's per site is one (1) RV. Over maximum allowable vehicles, a second site must be used and/or vehicles parked outside the park.

Exclusive Group Camping at Camp Wilkerson

Youth Groups - 18 and under \$200.00 minimum per night for up to 150 people. After 150 persons, \$1.00 per night per person. In addition, a fee of \$5.00 per RV per night.

Adult Groups - 19 and over \$500.00 minimum per night for up to 150 people. After 150 persons, \$3.00 per night per person. In addition, a fee of \$5.00 per RV per night.

note 1	Maximum number of people per site is eight (8)
--------	--

APPENDIX K: Tillamook and Columbia County Camping Fees

TILLAMOOK COUNTY PARKS' FEES

BARVIEW JETTY PARK

Fee Structure, Site Limitation and Reservation Policy

Effective May 1, 2005

Single Use Camp Site: **Summer Base Rate \$15/night**

BROWN Site Marker **Winter Base Rate \$10/night**

Allows one Tent and one Vehicle. One extra Tent may be added to the site for \$5 each per night. Extra vehicles are not allowed. Suggested campsite limit is 8 people.

Double Use Camp Site: **Summer Base Rate \$20/night**

BLUE Site Marker **Winter Base Rate \$15/night**

Allows one Tent and one Vehicle OR, one RV and one Vehicle. Two extra Tents plus one extra Vehicle may be added to the site for \$5 each per night. Suggested campsite limit is 12 people.

Back-In RV Sites (14 through 60): **Summer Base Rate \$20/night**

..... **Winter Base Rate \$15/night**

Allows one RV and one Vehicle. During the Summer Season, sites 41-50 may add one extra Vehicle and one Tent for \$5 each per night. In sites 14-39 and sites 51-60 additional Vehicles are not allowed. However, you may add one additional Tent for \$5 each per night.

Pull Through Sites (1 through 13): **Summer Base Rate \$25/night**

..... **Winter Base Rate \$20/night**

Allows one RV and one Vehicle. During the Summer Season, one extra Vehicle and one Tent may be added to the site for \$5 each per night.

Hiker-Biker Campsite: **Base Rate \$5/night**

Allows one person and one Tent. Extra people, with or without Tents, may be added for \$5 each per night. Suggested campsite limit is two Tents and four people. RVs and Vehicles are not permitted at Hiker-Biker campsites.

RV Holding Tank Dump: **Base Rate \$10/RV**

Allows one RV, not registered as a park guest, to empty the contents of the RV holding tanks.

Please remove all occupied signs when you leave, and remember

CHECK OUT IS 1:30 P.M.

THANK YOU!

We appreciate your cooperation and hope you have a great time at our parks.

Tillamook County Parks Department

For information or reservations at one of our campgrounds, please call:

Roy Creek Park	<i>on the Nehalem River</i>	503/322-3522
Barview Jetty Park	<i>on the Tillamook Bay Jetty and Beach</i>	503/322-3522
Kilchis River Park	<i>on the Kilchis River</i>	503-842-6694
Trask River Park	<i>on the Trask River</i>	503/842-4559
Whalen Island Park	<i>in the Sandlake Estuary</i>	503/965-6085
Webb Park	<i>adjacent to Cape Kiwanda and Beach</i>	503/965-5001
Woods Park	<i>on the Nestucca River</i>	503/965-5001

KILCHIS PARK

Fee Structure, Site Limitation and Reservation Policy

Effective May 1, 2005

Designated Camp Site: **Base Rate \$10/night**

Allows one Tent or one RV, and two Vehicles. At the discretion of Park staff, a vehicle may be exchanged for a small tent. Extra Tents, RVs and Vehicles may be added to the site for \$5 each per night. Maximum of 3 extras. Campsite limit is 8 people.

Undesignated Open Camping Areas: **Base Rate \$10/night**

Allows one Tent or one RV and one Vehicle. At the discretion of Park staff, an extra Tent or Vehicle may be added for \$5 each per night. Campsite limit shall be 8 people. Reservations are not available for undesignated open camping areas.

Group Picnic Area: **Base Rate \$20/day**

..... **\$5 non-refundable reservation fee**

Reservations are available for Group Picnic Areas. Reservations May thru September.

Day Use Area: **Base Rate \$2/per vehicle year-round**

Hiker-Biker Campsite: **Base Rate \$5/night**

Allows one person and one Tent. Extra people, with or without Tents, may be added for \$5 each per night. Suggested campsite limit is two Tents and four people.

RV Holding Tank Dump: **Base Rate \$10/RV**

Allows one RV, not registered as a park guest, to empty the contents of the RV holding tanks.

Please remove all occupied signs when you leave, and remember

CHECK OUT IS 1:30 P.M.

THANK YOU!

We appreciate your cooperation and hope you have a great time at our parks.

Tillamook County Parks Department

For information or reservations at one of our campgrounds, please call:

Roy Creek Park	<i>on the Nehalem River</i>	503/322-3522
Barview Jetty Park	<i>on the Tillamook Bay Jetty and Beach</i>	503/322-3522
Kilchis River Park	<i>on the Kilchis River</i>	503-842-6694
Trask River Park	<i>on the Trask River</i>	503/842-4559
Whalen Island Park	<i>in the Sandlake Estuary</i>	503/965-6085
Webb Park	<i>adjacent to Cape Kiwanda and Beach</i>	503/965-5001
Woods Park	<i>on the Nestucca River</i>	503/965-5001

APPENDIX K: Tillamook and Columbia County Camping Fees

TRASK RIVER PARK

Fee Structure, Site Limitation and Reservation Policy

Effective May 1, 2005

Designated Camp Site: **Base Rate \$10/night**

Allows one Tent or one RV, and two Vehicles. At the discretion of Park staff, a vehicle may be exchanged for a small tent. Extra Tents, RVs and Vehicles may be added to the site for \$5 each per night. Maximum of 3 extras. Campsite limit is 8 people.

Undesignated Open Camping Areas: **Base Rate \$10/night**

Allows one Tent or one RV and one Vehicle. At the discretion of Park staff, an extra Tent or Vehicle may be added for \$5 each per night. The open campsite capacity shall not exceed 20 people without expressed written permission.

Group Picnic Area: **Base Rate \$20/day**

..... **\$5 non-refundable reservation fee**
Reservations are available for Group Picnic Areas. Reservations May thru September.

Day Use Area: **Base Rate \$2/per vehicle year-round**

Hiker-Biker Campsite: **Base Rate \$5/night**

Allows one person and one Tent. Extra people, with or without Tents, may be added for \$5 each per night. Suggested campsite limit is two Tents and four people. Reservations are available.

RV Holding Tank Dump: **Base Rate \$10/RV**

Allows one RV, not registered as a park guest, to empty the contents of the RV holding tanks.

**Please remove all occupied signs when you leave, and remember
 CHECK OUT IS 1:30 P.M.**

THANK YOU!

**We appreciate your cooperation and hope you have a great time at our parks.
 Tillamook County Parks Department**

For information or reservations at one of our campgrounds, please call:

Roy Creek Park	<i>on the Nehalem River</i>	503/322-3522
Barview Jetty Park	<i>on the Tillamook Bay Jetty and Beach</i>	503/322-3522
Kilchis River Park	<i>on the Kilchis River</i>	503-842-6694
Trask River Park	<i>on the Trask River</i>	503/842-4559
Whalen Island Park	<i>in the Sandlake Estuary</i>	503/965-6085
Webb Park	<i>adjacent to Cape Kivanda and Beach</i>	503/965-5001
Woods Park	<i>on the Nestucca River</i>	503/965-5001

APPENDIX K: Tillamook and Columbia County Camping Fees

WEBB PARK

Fee Structure, Site Limitation and Reservation Policy

Effective May 1, 2005

Designated Camp Site: **Base Rate \$15/night**
Allows one Tent or one RV, and two Vehicles. At the discretion of Park staff, a vehicle may be exchanged for a small tent. Extra Tents, RVs and Vehicles may be added to the site for \$5 each per night. Maximum of 2 extras. Campsite limit is 8 people.

RV Hookup Site with Electricity and Water: **Base Rate \$20/night**
Allows one RV and two Vehicles. At the discretion of Park staff, a Vehicle may be exchanged for a small tent. One extra Tent and one extra vehicle may be added for \$5 each per night. Maximum of 2 extras. Campsite limit shall be 8 people.

Hiker-Biker Campsite: **Base Rate \$5/night**
Allows one person and one Tent. Extra people, with or without Tents, may be added for \$5 each per night. Suggested campsite limit is two Tents and four people. Reservations are available.

RV Holding Tank Dump: **Base Rate \$10/RV**
Allows one RV, not registered as a park guest, to empty the contents of the RV holding tanks.

**Please remove all occupied signs when you leave, and remember
 CHECK OUT IS 1:30 P.M.**

THANK YOU!

**We appreciate your cooperation and hope you have a great time at our parks.
 Tillamook County Parks Department**

For information or reservations at one of our campgrounds, please call:		
Roy Creek Park	<i>on the Nehalem River</i>	503/322-3522
Barview Jetty Park	<i>on the Tillamook Bay Jetty and Beach</i>	503/322-3522
Kilchis River Park	<i>on the Kilchis River</i>	503-842-6694
Trask River Park	<i>on the Trask River</i>	503/842-4559
Whalen Island Park	<i>in the Sandlake Estuary</i>	503/965-6085
Webb Park	<i>adjacent to Cape Kiwanda and Beach</i>	503/965-5001
Woods Park	<i>on the Nestucca River</i>	503/965-5001

WHALEN ISLAND PARK

Fee Structure, Site Limitation and Reservation Policy

Effective May 1, 2005

Designated Camp Site: **Base Rate \$10/night**
Allows one Tent or one RV, and one Vehicle. At the discretion of Park staff, extra tents, RVs and Vehicles may be added to the site for \$5 each per night. Maximum of 3 extras. Campsite limit is 8 people.

Undesignated Open Camping Areas: **Base Rate \$10/night**
Allows one Tent or one RV and one Vehicle. At the discretion of Park staff, an extra Tent or Vehicle may be added for \$5 each per night. Campsite limit shall be 8 people. Reservations are not available for undesignated open camping areas.

Group Picnic Area: **Base Rate \$20/day**
 **\$5 non-refundable reservation fee**
Reservations are available for Group Picnic Areas. Reservations May thru September.

Day Use Area: **Base Rate \$2/per vehicle year-round**

Hiker-Biker Campsite: **Base Rate \$5/night**
Allows one person and one Tent. Extra people, with or without Tents, may be added for \$5 each per night. Suggested campsite limit is two Tents and four people. Reservations are available.

RV Holding Tank Dump: **Base Rate \$10/RV**
Allows one RV, not registered as a park guest, to empty the contents of the RV holding tanks.

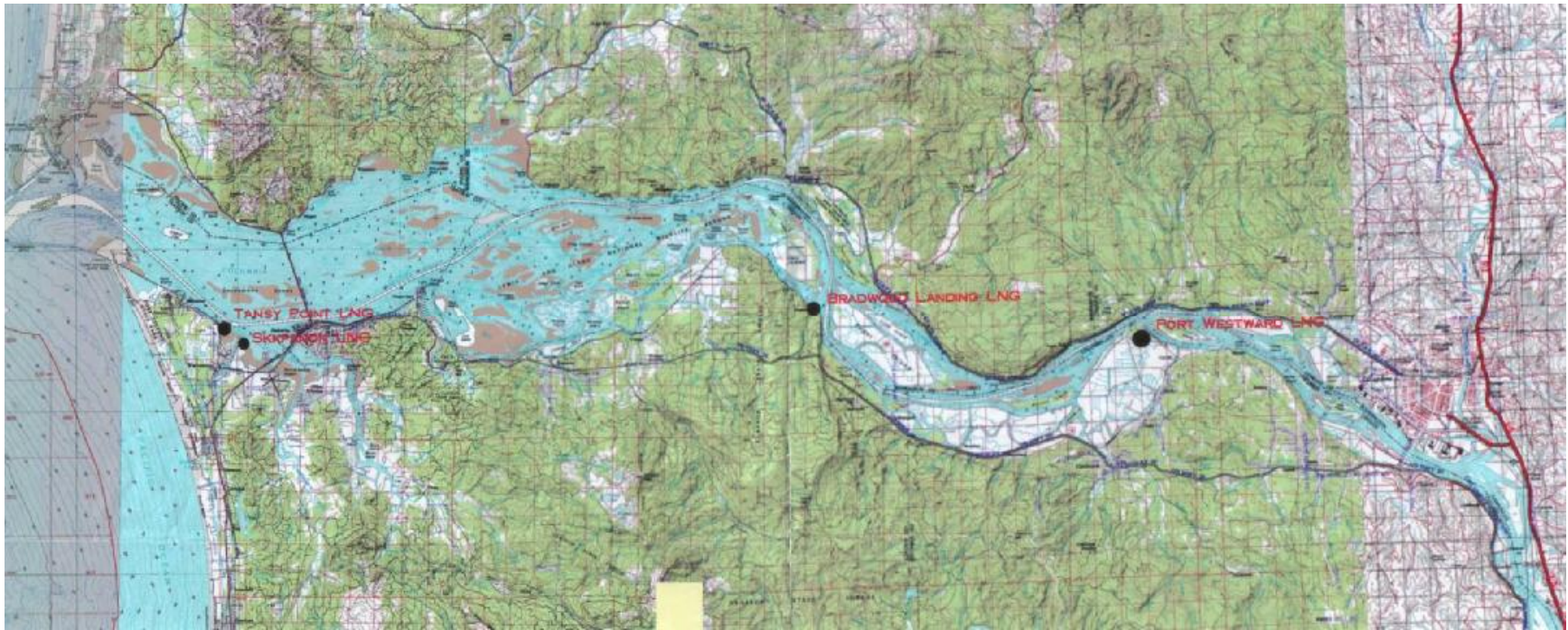
**Please remove all occupied signs when you leave, and remember
 CHECK OUT IS 1:30 P.M.**

THANK YOU!

**We appreciate your cooperation and hope you have a great time at our parks.
 Tillamook County Parks Department**

For information or reservations at one of our campgrounds, please call:		
Roy Creek Park	<i>on the Nehalem River</i>	503/322-3522
Barview Jetty Park	<i>on the Tillamook Bay Jetty and Beach</i>	503/322-3522
Kilchis River Park	<i>on the Kilchis River</i>	503-842-6694
Trask River Park	<i>on the Trask River</i>	503/842-4559
Whalen Island Park	<i>in the Sandlake Estuary</i>	503/965-6085
Webb Park	<i>adjacent to Cape Kiwanda and Beach</i>	503/965-5001
Woods Park	<i>on the Nestucca River</i>	503/965-5001

APPENDIX L: Locations of Proposed LNG Facilities on Columbia River



Columbia River LNG Proposal

APPENDIX M: Grant Summaries and Worksheets

Oregon State Parks and Recreation Department

<p>ATV Grant Program</p>	<p>This program provides matching grants for ATV recreational projects in the following areas: Operation and Maintenance, Law Enforcement and Emergency Medical Services, Acquisition, Planning, Development, and Safety Education. Program funds are derived from ATV permit fees and a percentage of the gas tax related to ATV use. Depending on the project type, grant opportunities occur once a year or three times a year.</p>
<p>County Opportunity Grants</p>	<p>This program provides matching grants to Oregon counties for the acquisition, development, rehabilitation and planning for county park and recreation sites that provide, or will provide, overnight camping facilities. Funds are derived from RV registration fees. Historically, grant cycles occurred biennially, but now occur each year.</p>
<p>Land and Water Conservation</p>	<p>This program provides matching grants for the acquisition, development and major rehabilitation of outdoor park and</p>

<p>Fund</p>	<p>recreation areas and facilities. Projects must be consistent with SCORP and local comprehensive land-use plans and park master plans. Funds are primarily derived from Outer Continental Shelf mineral receipts. The National Parks Service is the federal program manager. The program provides matching grants to states, which then make grants available to local units of government.</p>
<p>Local Government Grants</p>	<p>This program provides matching grants to local governments for acquisition, development and rehabilitation of outdoor park and recreation areas. Funds are derived from the Oregon Lottery, and grant cycles occur on a biennial basis in odd-numbered years. The program includes large and small grant options; maximum grants are \$500,000 and \$50,000 respectively.</p>
<p>AT Recreational Trails Program</p>	<p>The RTP is a federal-aid-assistance program that helps states provide and maintain recreational trails for a wide range of both motorized and non-</p>

APPENDIX M: Grant Summaries and Worksheets

	motorized uses. Funds may be used to maintain and restore existing trails; develop and rehab trailheads; construct new trails; and acquire trail corridors and facility sites. Grant cycles occur annually and require a minimum 20% sponsor match.
--	---

Oregon Marine Board

Facility Grant Program	This program provides funds to local and state agencies to acquire, develop, expand, and rehabilitate public, principally motorized boating facilities on waters of the state. Funds are derived from registered boat license fees, motorboat fuel taxes, the federal Clean Vessel Act Program and Boating Infrastructure Grant Program. Grant cycles occur on a biennial basis, and the program has a minimum match policy for local agencies of 25%.
-------------------------------	--

Oregon Department of Fish and Wildlife

Restoration and Enhancement Program	This program provides funds to public agencies and private-nonprofit organizations to restore state-owned hatcheries, enhance fish production, and
--	--

	provide additional public access to fishing waters. Specific access facilities may include boat ramps, docks and trails. Funds are derived from surcharges on sport fishing licenses, commercial salmon licenses and poundage fees.
--	---

Oregon Department of Land Conservation and Development

306A Program	This program provides matching grants to coastal counties for acquisition and small-scale construction projects that provide public recreation access to ocean and estuarine shores and coastal lakes and rivers; that redevelop urban waterfronts or ports; and that preserve significant coastal resources. Funds are provided under the Coastal Zone Management Act. Grant cycles occur annually. The maximum grant limit is \$50,000 and sponsors must provide an equal amount of cash or in-kind contributions.
---------------------	--

APPENDIX M: Grant Summaries and Worksheets

Oregon Department of Transportation

<p>Transportation Enhancement Program</p>	<p>This program provides federal highway funds for projects that strengthen the cultural, aesthetic or environmental value of the state’s transportation system. Funds are provided in four main areas: pedestrian and bicycle projects, historic preservation related to surface transportation, landscaping and scenic beautification, and environmental mitigation (highway runoff and wildlife protection only). Sponsors must be public agencies, and the program intent is to fund special or additional activities not normally required on a highway or transportation project.</p>
--	---

National Fish and Wildlife Foundation

<p>General Matching Grants</p>	<p>This program provides matching grants to counties and other government agencies, tribes, schools and nonprofit conservation organizations to conserve fish, wildlife, plants and the habitats on which they depend through fostering cooperative</p>
---------------------------------------	---

	<p>partnerships. Eligible projects include restoration, enhancement and acquisition. Grants typically range from \$10,000 to \$150,000, and sponsors must provide minimum 1:1 matches, with target matches of 2:1.</p>
<p>Columbia River Estuarine Coastal Fund</p>	<p>This program provides funds to counties and other eligible sponsors to conserve ecosystems and habitat resources in the lower Columbia and coastal areas south to Tillamook Bay and north to Willapa Bay. Program funds are derived from court settlements for pollution violations; consequently, the timing of grant cycles varies. The program includes both a small grant (\$5,000 or less) and large grant (\$5,000 to \$200,000) element. Sponsor matches are not required, but encouraged.</p>
<p>Five-Star Restoration Matching Grants</p>	<p>This program provides funds for community-based wetland, riparian and coastal habitat restoration projects that build diverse partnerships and foster local natural resources stewardship through education, outreach and training activities. The</p>

APPENDIX M: Grant Summaries and Worksheets

	<p>program emphasizes diverse partnerships of ideally five organizations (“Five Stars”) or more. Grants typically range from \$5,000 to \$20,000. Any public or private entity may apply.</p>
--	---

National Fish and Wildlife Foundation, continued

<p>Oregon Governor’s Fund for the Environment</p>	<p>This program provides funds to benefit rivers and streams passing through Oregon and near coastal waters. Funds are derived from settlement agreements for pollution violations. The initial program focus is on the Willamette Basin, but the scope is likely to expand to other areas/basins. Initial project priorities include technical assistance for private land owners; encouraging land owner use of existing incentive programs such as the Wetlands Reserve Program; public awareness; and technical assistance to small municipal government agencies to address non-point source water-quality issues.</p>
--	---

Oregon Watershed Enhancement Board

<p>General Grant Program</p>	<p>This program supports voluntary efforts to create and maintain healthy watersheds, and encourages interagency cooperation, cost sharing, local stakeholder involvement, youth and volunteer participation, and efforts to teach watershed concepts. Projects may include on-the-ground restoration and acquisition, assessment and/or monitoring of natural resource conditions; education and outreach; and watershed council support. Eligible applicants include individuals, organizations, local governments and institutes of higher education. Funds are derived from the Oregon State Lottery.</p>
<p>Small Grant Program</p>	<p>This program provides small grants (\$10,000 or less) for on-the-ground restoration projects that benefit water quality, water quantity, and fish and wildlife. Eligible applicants include any person, tribe, watershed council, soil and water conservation district, nonprofit institution, school or political subdivision of the state that is not a state agency. The project must demonstrate benefits to aquatic species or wildlife health.</p>

APPENDIX M: Grant Summaries and Worksheets

North American Wetlands Conservation Act

<p>Standard Grants Program</p>	<p>NAWCA provides matching grants to organizations and individuals who have developed partnerships to carry out wetlands conservation in the United States, Canada, and Mexico. The standard grants program provides funds for acquisition, restoration and enhancement of habitats that support migratory birds and other wildlife. There is a maximum per-project grant limit of \$1 million, and sponsors must provide a minimum 1:1 match. Successful grants commonly provide higher matching percentages. The lower Columbia Region below Bonneville Dam has received significant NAWCA funding.</p>
<p>Small Grants Program</p>	<p>Small grants support the same kinds of projects and objectives as the Standard Grants Program. However, grants do not exceed \$50,000 and the program emphasizes projects that have been submitted by sponsors that have not participated in a NAWCA-supported project.</p>

Lower Columbia River Estuary Partnership (LCREP)

<p>Habitat Restoration Program</p>	<p>LCREP works to protect and restore the Columbia River Estuary with on-the-ground improvements and education and information. In recent years, LCREP has provided matching grants to fund habitat restoration projects designed to improve the access and availability of rearing and spawning habitats for salmonid populations that utilize the lower Columbia below Bonneville Dam, including tidally influenced sections of tributaries. Eligible applicants include counties and other government bodies, schools, and community and environmental organizations. Grants typically range from \$50,000 - \$250,000, and sponsors must provide a 25% match. The BPA provides revenue for this program.</p>
---	--

APPENDIX M: Grant Summaries and Worksheets

Manager	Oregon Parks and Recreation Department
Program	ATV Grant Program
Purpose	Provides supplemental funding for ATV recreational projects
Eligible Recipients	<ul style="list-style-type: none"> •Public Agencies, including federal land managers, state agencies, and local governments that have the responsibility of providing off-highway vehicle (OHV) recreation. •Private Land Managers •Registered OHV Clubs (must be registered with the state as nonprofit organizations)
Eligible Projects	<ul style="list-style-type: none"> •Operation and Maintenance •Law Enforcement and Emergency Medical Services •Acquisition (fee simple and easements) •Planning •Development, including Emergency Repair •Safety Education
Ineligible Projects and/or Costs	<ul style="list-style-type: none"> •Overhead •Overtime •Expenses for vehicles and equipment used outside scope of an ATV project •Project work or expenses incurred prior to signed project agreement •Grant Writing •Projects excluding OHV recreation
Grant Limits	No specified maximum \$5,000 minimum (\$6,250 would be minimum total project cost including \$1,250 minimum match)
Sponsor Match	Planning grants: 50% minimum All other categories: 20% minimum
Funds Available	Varies
Fund Source	ATV user permit fees and a percentage of gasoline tax dollars related to OHV use.
Application Date	Generally, there are 3 open periods and 3 meeting dates each year to award funds. The January meeting considers operation and maintenance applications; April meeting considers First Aid and Police Services applications; and the September meeting considers Safety Education applications. Planning, Development, Acquisition, and Emergency Repair applications may be submitted during each open period.
Contact	Oregon Parks and Recreation Department ATV Grant Coordinator 725 Summer St. NE, Suite C Salem, OR 97301 Grant Program Questions: Rocky Houston (503) 986-0707

Manager	Oregon Parks and Recreation Department
Program	County Opportunity Grants
Purpose	Provides funding for acquisition, development, rehabilitation, and planning for county park and recreation sites that provide, or will provide, overnight camping facilities.
Eligible Recipients	Counties.
Eligible Projects	<ul style="list-style-type: none"> •Acquisition •Development (recreation and support facilities) •Rehabilitation •Planning
Ineligible Projects and/or Costs	<ul style="list-style-type: none"> •Projects at sites where recreation is secondary function (e.g., courthouse, fair, port, museum) •Recreation complexes for organized sports (e.g., baseball, soccer) •Indoor facilities (e.g., yurts, caretaker residences, maintenance buildings) •Routine maintenance
Grant Limits	No set limit. (However, applicants should consider funding available)
Sponsor Match	25% for counties with population of 30,000 or less 50% for counties with populations over 30,000
Funds Available	Varies. Approximately \$363,000 available for 2005 grant year.
Fund Source	RV Recreation Fees
Application Date	Historically grants available on biennial basis; grants now available on annual basis with application deadline in fall/winter (e.g., 11/9/05 for 2006 grant year.)
Evaluation Criteria/Priorities	Scoring Criteria <ul style="list-style-type: none"> •Need/Benefits •Exceptional Need •Planning and Public Involvement •Design and Accessibility •Source of Funding (match stability/M&O capacity) •Committee Member Evaluation
Contact	Oregon Parks and Recreation Department Local Government Grants Program 725 Summer St. NE, Suite C Salem, OR 97301 Marilyn Lippincott, Senior Grants Project Coordinator (503) 986-0708

APPENDIX M: Grant Summaries and Worksheets

Manager	Oregon Parks and Recreation Department/National Park Service
Program	Land and Water Conservation Fund
Purpose	Provides matching funds for the acquisition and development of outdoor recreation areas and facilities
Eligible Recipients	Cities and Counties Park and Recreation Districts Port Districts Indian Tribes Metropolitan Recreation Districts Some State Agencies (OPRD, ODFW, ODF, DSL)
Eligible Projects	<ul style="list-style-type: none"> •Acquisition (fee or less than fee) •Development •Major Rehabilitation
Ineligible Projects and/or Costs	<ul style="list-style-type: none"> •Acquisition of historic sites and structures, museums, archaeological excavations, land to meet minimum school needs, facilities for semi-professional and professional arts and athletics, game refuges, fish production facilities, etc. •Development of indoor facilities (except swimming pools and ice skating rinks), community centers, meeting rooms, auditoriums, semi-professional or professional arts or athletic facilities, convention facilities, etc.
Grant Limits	Maximum: None specified (\$250,000 highest grant award in fiscal 2005.) Minimum: \$12,500 minimum federal share (requires at least \$25,000 total project per match requirement)
Sponsor Match	50% of total project cost (minimum)
Funds Available	Varies. Recommended funding level for fiscal 2005: \$737,887. (10 projects, with grant amounts ranging from \$13,135 to \$250,000.)
Fund Source	Federal Land and Water Conservation Fund (LWCF). Funds primarily derived from Outer Continental Shelf mineral receipts, with additional funds from motorboat fuel taxes, recreation user fees, and proceeds from sale of federal surplus property.
Application Date	Grant cycles occur annually, with applications due in the fall of each year that funds are available.
Evaluation Criteria/Priorities	<ul style="list-style-type: none"> •Compliance re: grant performance and ADA accessibility (no points assigned; however, failure to comply could lead to disqualification of application) •Readiness to Proceed •Partnerships •SCORP Consistency and Compliance •Local Needs and Benefits •Site Suitability •Fiscal Considerations •Public Involvement •Discretionary Committee Criteria
Contact	Oregon Parks and Recreation Department Grants Section 725 Summer St. NE, Suite C Salem, OR 97301 (503) 986-0711

Manager	Oregon Parks and Recreation Department
Program	Local Government Grant Program
Purpose	Provides funds to local governments for acquisition, development, and rehabilitation of outdoor park and recreation areas and facilities.
Eligible Recipients	Cities, counties, metropolitan service districts, park and recreation districts, and port districts. (Local govt. agencies, which under state law have obligation to provide public recreation facilities.)
Eligible Projects	<ul style="list-style-type: none"> ▶ Acquisition (fee or less-than fee) ▶ Development (recreation and support facilities) ▶ Rehabilitation.
Ineligible Projects and/or Costs	<ul style="list-style-type: none"> ▶ Indoor facilities ▶ Commercial amusement centers ▶ Routine maintenance ▶ Professional facilities ▶ Exhibit areas for non-recreation purposes ▶ Exclusive use areas for specific groups ▶ Operational equipment
Grant Limits	\$500,000 for Large Grant Requests \$50,000 for Small Grant Requests
Sponsor Match	At least 50% match required for: <ul style="list-style-type: none"> a. Cities and districts over 5,000 population b. Counties over 30,000 population At least 40% match required for: <ul style="list-style-type: none"> a. Cities and districts less than 5,000 population b. Counties less than 30,000 population
Funds Available	Approximately \$8 million for 2005-07 biennium. (10% assigned to small grants program.)
Fund Source	Lottery
Application Date	Grant cycles occur on biennial basis in odd-numbered years. Application due date for 2005 was April 15.
Evaluation Criteria/Priorities	Scoring Criteria: <ul style="list-style-type: none"> a. Recreation needs and plan consistency b. Partnerships c. Public support d. Timelines (degree of threat) e. Source of funding (availability/commitment) f. Committee member evaluation
Contact	Oregon Parks and Recreation Department Local Government Grants Program 725 Summer St. NE, Suite C Salem, OR 97301 Michelle Scalise, Grants/Contracts Coordinator (503) 986-0708 Michele.scalise@state.or.us

APPENDIX M: Grant Summaries and Worksheets

Manager	Oregon Parks and Recreation Department
Program	Recreational Trails Program
Purpose	To provide and maintain recreational trails for both motorized and non-motorized uses.
Eligible Recipients	Nonprofit organizations Municipal agencies (cities, towns, counties, school districts, etc.) State and federal agencies Other govt. entities (tribes, regional governments, port districts, etc.)
Eligible Projects	<ul style="list-style-type: none"> •Maintain and restore existing trails •Develop and rehab trailhead facilities •Construct new recreation trails •Acquisition (fee simple and easements)
Ineligible Projects and/or Costs	<ul style="list-style-type: none"> •Use of condemned lands for matching value •Feasibility studies •Projects solely for environmental evaluation and documentation •Law enforcement •Planning •Sidewalks •Federal-designated wilderness area projects
Grant Limits	\$50,000-\$100,000 (Typical high-end range) \$5,000 (Minimum grant request)
Sponsor Match	20% of total project cost (minimum)
Funds Available	\$650,000 - \$850,000 (Typical range)
Fund Source	Federal aid to states authorized under Transportation Equity Act for the 21 st Century (TEA-21)
Application Date	Grant cycles occur annually. Letters of intent: December 2005 Application deadline: February 2006 Project evaluation: March 2006
Evaluation Criteria/Priorities	<ul style="list-style-type: none"> •Completeness of project application, sponsor's past performance, readiness to proceed, etc. (10 pts. Max). •Need – Satisfies identified need, coordinates with existing system, etc. (55 pts. Max). •Support/Commitment/Planning – Relates to plan/policies, demonstrated support, commitment to operate and maintain, etc. (35 pts. Max.)
Contact	Oregon Parks and Recreation Department Local Government Grants Program 725 Summer St. NE, Suite C Salem, OR 97301 Michelle Scalise, Grants/Contracts Coordinator Michele.scalise@state.or.us

Manager	Oregon Marine Board
Program	Facility Grant Program
Purpose	Acquire, develop, expand, and rehabilitate public, principally motorized, boating facilities located on all waters of the state.
Eligible Recipients	Local/state agencies authorized to provide public recreation facilities, including cities, counties, park and port districts, and state agencies. (Federal agencies must partner with local jurisdictions.)
Eligible Projects	Master planning and feasibility studies Design and engineering Acquisition Development, expansion and rehabilitation.
Ineligible Projects and/or Costs	<ul style="list-style-type: none"> ▶Application preparation or other indirect costs ▶Legal fees ▶Ordinary operations and maintenance ▶Waterway permit application, recreational use license or related fees ▶Construction permits or inspection fees Capital equipment such as tools, vehicles, boats
Grant Limits	No limit. 2005-07 grant requests range from \$1,500 to \$1 million
Sponsor Match	Priority given to projects with highest amount of cash and/or in-kind match. Minimum match policy is: Local entities: 25% State agencies: 25% Federal agencies: 50%
Funds Available	Approximately \$4-\$4.5 million for biennium, not including federal cost-sharing or sponsor match.
Fund Source	Registered boat license fees, motorboat fuel taxes, federal Clean Vessel Act Program and Boating Infrastructure Grant Program
Application Date	Grant cycles occur on biennial basis and extend from July 1 to June 30 of odd-numbered years (e.g. 7/1/05 – 6/30/07). Application notices are posted on March 1, preceding start of biennial period.
Evaluation Criteria/Priorities	Priority assigned to facilities for motorized boats with at least 50% motorized use. Priority needs in order are pollution control facilities, facility rehabilitation, expansion, new facility acquisition and development. Priority construction needs in order are: <ol style="list-style-type: none"> 1. Vessel waste collection systems. 2. Boat ramps and transient tie-up floats. 3. Restrooms. 4. Parking and access roadways. 5. Boarding floats. 6. Landscaping, kiosks etc.
Contact	Oregon Marine Board Grants Coordinator 435 Commercial Street NE, #400 Salem, Oregon (503) 373-1405 X251

APPENDIX M: Grant Summaries and Worksheets

Manager	Oregon Department of Land Conservation and Development
Program	306A Program
Purpose	Acquire and construct (small-scale construction projects) that support 306A objectives: <ul style="list-style-type: none"> •Provide public recreation access to ocean and estuarine shores, coastal lakes and rivers. •Redevelop urban waterfronts and ports. •Preserve or restore significant conservation, recreational, ecological, or aesthetic coastal features, or coastal resources of national significance.
Eligible Recipients	<ul style="list-style-type: none"> •Coastal Counties and Cities (Columbia River boundaries extend to east Clatsop County line.) •Coastal Associations of Local Governments •Coastal Ports •Coastal Public School Districts •State Agencies
Eligible Projects	<ul style="list-style-type: none"> •Land Acquisition. •Small-scale Construction (i.e., projects that do not require EIS pursuant to NEPA; projects generally less than \$100K w/o significant environmental impacts.) Typical projects include: paths, walkways, fences, parks, restoration of historic buildings/structures; acquisition and restoration of piers, etc. Projects must be completed within 12 months after grant award; extensions are possible but discouraged.
Ineligible Projects and/or Costs	Costs incurred prior to or after the specified grant period.
Grant Limits	\$50K maximum
Sponsor Match	Sponsors must provide equal amount of cash or in-kind contribution.
Funds Available	
Fund Source	Federal Coastal Zone Management Program Funds
Application Date	Annual program. Mid-February application deadline.
Evaluation Criteria/Priorities	Applications are scored based on various criteria that relate to: Kind of access, project quality, waterfront revitalization, restoration or preservation, interpretive displays, regional economic development, non-applicant matching funds, and status of local, state, and federal land-use approvals
Contact	Oregon Department of Land Conservation and Development Jeff Weber 306A Program Grants Coordinator (503) 731-4065 x26

Manager	Oregon Department of Fish and Wildlife
Program	Restoration and Enhancement Program
Purpose	Restore state-owned hatcheries, enhance natural fish production, expand hatchery production, and provide additional public access to fishing waters. The program provides increased recreational fishing opportunities and supports and improves the commercial salmon fishery.
Eligible Recipients	Any public or private, non-profit 501c(3) organization, including sport or commercial fishing groups, school districts, federal, state or local agencies, port districts, and soil and water conservation districts.
Eligible Projects	<ul style="list-style-type: none"> ► Enhancement: access for sport/commercial fishing (e.g., boat ramps, docks, trails), propagation, habitat enhancement, research and monitoring, and education (e.g., literature, demonstrations, displays re: fish, fishing, or habitat). ► Restoration: maintenance (restore or modify existing fishways, screens, hatcheries, or other structures), liberation (maintain or provide equipment for fish liberation).
Ineligible Projects and/or Costs	No specific prohibitions. Board will consider various project elements at time of project review/evaluation.
Grant Limits	No limit. 2005-06 project list includes grant requests ranging from \$2,200 to \$669,000. (Most grant requests are less than \$100,000.)
Sponsor Match	Not required. However, most projects include significant cost-sharing and matching funds are considered in project evaluation.
Funds Available	Approximately \$3 million per biennium.
Application Date	Approximately 4/5 deadlines per biennium. Dates subject to change. Consult program web site.
Evaluation Criteria/Priorities	ODFW Commission appoints 7-member board to review projects. Board recommends a balance between restoration and enhancement projects. Funds are also dispersed in same ratio as revenues derived from surcharges on sport fishing licenses, commercial salmon licenses and poundage fees (approximately 80% sport vs. 20% commercial).
Contact	<ul style="list-style-type: none"> ► R&E Program Coordinator ODFW, Fish Division 3406 Cherry Ave Salem, OR 97303 (503) 947-6232 ► Assistant Coordinator Lisa Kingsley 3406 Cherry Ave. Salem, OR 97303 (503) 947-6211 lisa.m.kingsley@state.or.us <p>For initial project consultation (Clatsop county), contact Columbia River field office in Clackamas, OR.</p>

APPENDIX M: Grant Summaries and Worksheets

Manager	National Fish and Wildlife Foundation
Program	General Matching Grants
Purpose	Conserve fish, wildlife, plants, and the habitats on which they depend through fostering of cooperative partnerships.
Eligible Recipients	Federal, state, and local governments Tribes Educational Institutions Nonprofit conservation organizations
Eligible Projects	Restoration, enhancement, acquisition. (Staff indicates fewer acquisition projects getting funded.)
Ineligible Projects	<ul style="list-style-type: none"> ▶ Political Advocacy ▶ Shortfalls in govt. agency budgets ▶ General admin overhead or indirect costs ▶ Multi-year grants ▶ Basic research
Grant Limits	\$10,000 - \$150,000 (typical range)
Sponsor Match	Target ratio (match/grant): 2:1 Minimum ratio: 1:1
Funds Available	FY 2002: \$2.25 million (all NFWF programs for OR)
Application Date	Pre-proposals: June 1 and October 15 Full Proposals: July 15 and December 1
Evaluation Criteria/Priorities	<ul style="list-style-type: none"> ▶ Address priority actions promoting fish and wildlife conservation and habitats on which they depend. ▶ Involve other conservation and community interests. ▶ Leverage available funds. ▶ Evaluate project outcomes.
Contact	National Fish and Wildlife Foundation 806 SW Broadway, Suite 750 Portland, Oregon 97205 (503) 417-8700 www.nfwf.org

Manager	National Fish and Wildlife Foundation
Program	Oregon Governor's Fund for the Environment
Purpose	To benefit rivers and streams passing through Oregon and near coastal waters. (Initial focus on Willamette Basin but scope likely to expand to other areas/basins.) Specific purposes: <ul style="list-style-type: none"> •Develop and implement strategies to eliminate or reduce pollution or otherwise restore quality of Oregon rivers, streams, and coastal areas •Restore and conserve fish, wildlife, and plant resources •Identify continuing sources of pollution •Improve state/local criminal enforcement of environmental protection laws
Eligible Recipients	Non-profit conservation organizations Watershed councils and soil and water conservation districts Special districts, tribes, schools Counties and cities State and federal agencies
Eligible Projects	Priorities for initial funding round: <ul style="list-style-type: none"> •Technical assistance to private landowners (via workshops, community meetings, individual meetings, etc.) to address environmental issues •Encourage participation in existing landowner incentive programs available through farm bill (e.g., CREP, WRP) or other similar state/federal programs. •Provide public awareness on significance of aquatic resources and importance of environmental laws to protect those resources •Provide technical assistance to small municipal govts to address non-point source water-quality issues
Ineligible Projects	<ul style="list-style-type: none"> •Political advocacy, litigation, or mitigation activities •Equipment not primarily related to project •Website development or videos
Grant Limits	\$5,000 - \$50,000
Sponsor Match	Not required, but encouraged
Funds Available	Total: \$2 million. Initial grant cycle: \$200K - \$300K. (Funds derived from settlement agreement imposed on shipping company for pollution violations.)
Application Date	Initial cycle: October 2005 (pre-proposal deadline) Future cycles: To be determined
Evaluation Criteria/Priorities	<ul style="list-style-type: none"> •Addresses program purposes •Describes need clearly and how project addresses problem •Has quantifiable/measurable benefits for fish, wildlife, or habitat •Includes two or more partners in implementation and/or cost share •Includes community volunteer efforts •Defines success/outcomes clearly •Can be accomplished within two years •Is innovative and creative •Provides opportunity to replicate successful project in other geographic area •Minimizes indirect administrative costs
Contact	National Fish and Wildlife Foundation 806 SW Broadway, Suite 750 Portland, Oregon 97205 (503) 417-8700

APPENDIX M: Grant Summaries and Worksheets

Manager	National Fish and Wildlife Foundation
Program	Five-Star Restoration Matching Grants
Purpose	Support community-based wetland, riparian, and coastal habitat restoration projects that build diverse partnerships and foster local natural resources stewardship through education, outreach, and training
Eligible Recipients	Any public or private entity
Eligible Projects	Projects must include strong on-the-ground wetland, riparian, or coastal habitat restoration component and should also include training, education, outreach, monitoring and community stewardship. Projects must involve diverse partnerships of ideally five organizations (i.e., "five stars") that contribute funding, land, technical assistance, workforce support, and/or in-kind services
Ineligible Projects	Projects involving only research, monitoring, or planning, or projects that are part of mitigation requirement
Grant Limits	\$5,000 - \$20,000. (\$10,000 average)
Sponsor Match	Program emphasizes listing of project partners and value of partner contribution, but specific percentage for sponsor share is not indicated
Funds Available	In 2005, the program funded 53 projects (out of 220 proposals) with an average grant amount of \$10,000.
Application Date	Early March
Evaluation Criteria/Priorities	Matching grants awarded to projects that: <ul style="list-style-type: none"> •Emphasize diverse partnerships •Include strong on-the-ground restoration element •Demonstrate measurable ecological, educational, social, and/or economic benefits
Contact	National Fish and Wildlife Foundation 1120 Connecticut Ave., NW, Suite 900 Washington DC 20036 (202) 857-0166

APPENDIX N: Regional Recreation Council – Proposed Charter

Purpose:

To coordinate planning among the major providers of recreation in Clatsop County leading to the development of a more integrated and well-distributed recreational system that will meet the needs of residents and visitors.

Major Goals:

1. *Create a Land and Water Trail Plan throughout the County.*
2. *Create uniform land and water trail use guidelines and consistent signage to minimize user conflicts.*
3. *Collaborate on recreational maps and other visitor information.*
4. Identify and pursue opportunities to secure public access to rivers, streams and lakes, as well as significant trails and natural or historic sites.
5. Build a geographical information systems (GIS) inventory of all parks and recreational facilities, including: parks, camping sites, sport fields, trails, historic sites, and other relevant data.
6. Identify opportunities for cost savings through cooperative efforts for maintenance and security.
7. Seek grant funding to support the goals of the Council.
8. Analyze future needs and trends in recreation within Clatsop County; identify and work to solve unmet needs.
9. Coordinate planning of future developments.

Membership:

Permanent Members:

The local representative for recreational matters from Clatsop County, Oregon State Parks, National Parks Service and Oregon Department of Forestry, each of whom is officially appointed by his/her respective agency. The chairman is selected from among these members.

Rotating Members (2 year appointments):

- 3 - Officially appointed representatives from among the incorporated cities and Recreational District(s).
- 2 – Members from recognized local recreational user groups.
- 2 – Members-at-large chosen from among citizen applicants.
[Note: An effort will be made to seek representation from all geographic areas of the County.]

Staff:

A quarter-time position funded by grant and selected from among qualified applicants. This position will report to the Committee Chair and be expected to document all expenditures to the funding authority.

Start-up Period:

The County will interview and hire the Staff position from among qualified applicants. It will assume the initial costs for 3-6 months until grant funding is obtained.

Frequency of Meetings:

The council will meet at least bi-month

APPENDIX O: Clatsop County Park Rules and Regulations

EXHIBIT A

PARK REGULATIONS

A. Definitions

- (1) "Park area" means any lands accepted as a county park pursuant to ORS Chapter 275.
- (2) "Motor vehicle" means every self-propelled vehicle and vehicle designed for self-propulsion, except police and other emergency motor vehicles, and does not include camping or sleeping facility vehicles.
- (3) "Sleeping facility vehicle" means any motor vehicle or device designed for overnight camping, including but not limited to campers, motor homes, travel trailers, and tent trailers.
- (4) "Camp" or "camping" means the placing or pitching of tents, the placing of camping or sleeping facility vehicles including but not limited to a trailer, mounted camper, motor vehicle or other equipment for the purpose of staying overnight or for a limited period during proscribed hours at a county park, upon other county property, or upon a county or public road.
- (5) "Park Ranger" means a Clatsop County employee specifically designated to seek compliance with and enforce County park ordinances.

B. Park and County Property Restrictions

The following restrictions shall apply to all parks and county property:

- (1) Fires and smoking may be restricted by the Park Ranger at any time.
- (2) All fires, when allowed, shall be confined to a stove, pit, or fireplace designated for fires, attended at all times, and extinguished before its user leaves the fire. As used in this subsection, "fire" includes all open flames except for camp stoves, charcoal cookers, and other contained camping equipment used for cooking.
- (3) No person shall drive a vehicle at a speed greater than is reasonable and prudent, having due regard to traffic, surface, and strength of roadways, hazards at intersections, and other conditions then existing. The maximum speed limit on all interior roads, drives, and parking lots shall be 15 miles per hour, unless otherwise posted.

- (4) No person shall drive a motor vehicle on any walk, path, trail, service road, or other area, unless said walk, path, trail, service road, or area has been officially designated for use by motor vehicles.
- (5) No person shall park any auto, truck, trailer, or other vehicle in any area other than an area specifically designed for such purposes.
- (6) No person shall:
 - (a) Allow a dog or other animal to run at large. All animals shall be confined or leashed with a leash of not more than ten feet. The custodian of said animals are responsible for the animals' behavior and the removal of the animals' waste from the park;
 - (b) Ride, drive, lead, or keep a saddle horse or other animal except on such roads, trails, or areas specifically designated for that purpose;
 - (c) Deposit any rubbish, garbage, glass, or other litter except in receptacles designated for that purpose;
 - (d) Dispose of hand and dish water other than in the receptacles provided for that purpose, or to dump human waste in gray water receptacles;
 - (e) Wash any clothing or other materials in a lake or stream, or in any way pollute or defile any stream, spring, well, or lake;
 - (f) Dump household or commercial garbage, brought from lands outside the park, in park facilities;
 - (g) Alter, deface, mutilate, or destroy any trail, road, parking lot, bridge, fence, building, sign, barrier, or other facility or structure;
 - (h) Dig up or remove any soil, stones, rocks, or other substances whatever; make any excavation, or lay or set off any blast therein except within the confines of the county rock pit;
 - (i) Mutilate, dig, or remove any plant, or in any way burn, destroy, or defile any tree or plant or natural feature found in the park;
 - (j) Create or erect signs, markers, or inscriptions of any type;
 - (k) Use abusive, threatening, boisterous, vile, obscene, or indecent language or gestures;

APPENDIX O: Clatsop County Park Rules and Regulations

- (l) Operate radios, television, musical instruments, or other noise-producing devices, or otherwise cause unnecessary sound in such a manner and at such times so as to disturb other persons;
- (m) Cause, attempt to cause, or bring about any public demonstrations or disturbances, or in any way create a public nuisance;
- (n) Discharge any firearm, slingshot, arrow, air, CO², spring activated rifle or pistol or other similar device, darts, fireworks or related explosive materials, except in areas designated for such activity;
- (o) Throw rocks, sticks or other objects, which may endanger the safety of any other person within said area; or
- (p) In any manner pursue, hunt, trap, or molest any bird or animal.

C. Restricted Areas

- (1) The Park Ranger may, if necessary to protect natural resources or to promote safety in any park, designate areas as access restricted;
- (2) No person shall enter into an access restricted area unless that person has the written permission of the Park Ranger.

D. Overnight Camping

- (1) It shall be unlawful for any person to camp in a county park or on other county property, except in areas specifically designated by the county as public camp grounds. It shall be unlawful for any person to camp on a county or public road.
- (2) In designated camping areas, residence shall be limited to ten consecutive days in any park during the period from May 15 to September 15, and fourteen days during the remainder of the year.
- (3) No person shall abandon a camp established by that person. Any camp that is uninhabited for more than 24 hours shall be deemed abandoned. Abandoned vehicles and abandoned personal property shall be sold or disposed of in the manner established by Oregon law.

E. Concessions

- (1) No person shall operate a concession, or engage in the business of selling, hawking, peddling or vending any merchandise or material, without a written permit from Clatsop County.

F. Fees

- (1) The fees for day use, overnight camping, concessions and other Clatsop County park uses shall be set by order of the Board of Commissioners.
- (2) No person shall attempt to use a county park in a manner for which a fee is required without paying the established fee.

G. Enforcement

- (1) This ordinance shall be excepted from the enforcement provisions of Ordinance 96-15, the Clatsop County Code Compliance Ordinance.
- (2) Violation of this ordinance shall be punishable, upon conviction, by a fine of not more than \$250.00 for a non-continuing offense and \$1,000.00 for a continuing offense. Offenses shall be prosecuted pursuant to ORS 203.065, as amended.
- (3) Bail shall be set as 10% of the maximum fine together with any fees and assessments required by Oregon law.

APPENDIX P: Article: Sigfridson Park Adopted by Class of Star of the Sea School

Star of the Sea students learn about conservation through caring

St. Mary, Star of the Sea School students decided to make Sigfridson County Park more than their classroom for water quality studies.

They're now caretakers of the nature park near Olney through Clatsop County's Adopt-A-Park program.

The kids in Margaret Johnson's seventh- and eighth-grade class go to the park to sample the pH and water temperature in the Klaskanine River. They also monitor riparian vegetation, trees, shrubs, moss, lichen, animal signs and aquatic life in the river.

The students wanted to show their stewardship to the land and pride in the section of river because they spend so much time at the park, according to Johnson and Steve Meshke, the county's parks foreman.

"Mrs. Johnson has a great bunch of kids and they are all very excited about the Adopt-A-Park program as their class project," Meshke said.

Johnson became familiar with Sigfridson park about 10 years ago as a mem-

ber of the county's recreational lands planning advisory committee. The 64-acre park is located along Oregon Highway 202 about a mile east of Olney.

Johnson started the water testing and reporting project while teaching at Clatsop Community College with her students. She figures a class of hers, whether college or middle school, has been going to the park for about six years. Johnson also used the park for the a key part of her thesis for her master's degree in science education. She conducted research on inquiry-based learning and offering students a sense of stewardship and ownership to a specific location.

Any individual, neighborhood or organization may Adopt-A-Park as a volunteer project. The Parks Division continues to provide regular maintenance, while the individuals and groups assist with the special care of the adopted areas.

For more information, contact Meshke at 325-9306.



APPENDIX Q: Article: Camp Kiwanilong Celebrates 70th Anniversary

6 THE DAILY ASTORIAN **SPORTS** THURSDAY, JANUARY 3, 2008

Camp Kiwanilong offers 70 years of positive memories for kids, adults

"I wish I had a nickel for every time an elderly lady has pulled in here and said, 'Hey, this was my Girl Scout camp!'" says Camp Kiwanilong ranger Trinda Little.

Kiwanilong was a Civilian Conservation Corps project during the Depression years. This year it celebrates its 70th birthday.

Recently, Camp Kiwanilong signed a 99-year lease agreement with Clatsop County, so it's likely to be around awhile longer.

"I love it here," says Little. "It's the prettiest place in Clatsop County."

Little has been ranger for the past six years. Before that she was on the Board for eight years. "I grew up in Coos Bay, but I went to Warrenton High School for two years," says Little. "My dad did a lot of work with the Corps of Engineers so we moved up and down the coast a lot."

"I came back in 1977 and helped Jesse Wallace coach volleyball at Warrenton High School. I coached the junior varsity team. I've been here ever since."

Camp Kiwanilong is located across the road from the Warrenton Soccer Complex. It is a 220-acre spread that borders three different lakes. Long Lake is the one next to the lodge. Though the original lodge is still standing, Little says it's in need of some repairs. From the lodge it's one and a half miles to the beach down through the woods. There are 19 cabins. "The Castle is down that way," Little smiles, pointing at the restroom. "We call it The Castle because it's got 10 throats!"

"The camp is open to everyone, but kids get priority," says Little. "In an average year, Camp Kiwanilong provides services for 3,000 kids," she explains. "In April and May, OMSI rents the place for a science camp," she continues. "That books it up solid during the week, but the weekends are sometimes free during that time."

Summer camp goes from the last week in June through the first week of August. Debbie Vail, whose camp name is "Sparky," has become an institution over the years. She has played the role of mother and now grandmother in the summers for countless young people. This summer will be her 27th year as head counselor.

"VOCA (Victory Over Child Abuse) does a camp here every year," Little explains. "There is also a Native American group that does a salmon camp here each year."

She says that in September adults start coming in. "People from Coast Rehab use the camp," she explains, as well as people from Clatsop Behavioral.

"The camp really gets a lot of use throughout the year," says Little. "Girl Scouts, Boy Scouts, as well as groups from many of the local churches. There are gatherings out here during Thanksgiving and Christmas," she continues. "Labor Day weekend, Linfield's cross country team does a special camp here."


To get out of the rain, we step under the roof of the Slim Schragger Shelter, named after one of Kiwanilong's legendary supporters. "Keeping the camp buildings in good repair is a continual bat-

tle," she says, looking out across the grounds. "Many of the cabin roofs leak," she explains. "So many businesses have helped us out, though, and continue to help us," she says.

Little explains that the camp is a nonprofit organization and relies on user fees and donations to pay for its operation and maintenance.


If you'd like to be a financial supporter, send your donation to Camp Kiwanilong, P.O. Box 128, Warrenton.

Mark Mizell is an English teacher at Seaside High School. His column runs the first Thursday of each month in The Daily Astorian.



MARK MIZELL — For The Daily Astorian
Moss-covered trees form an archway over one of the many trails at Camp Kiwanilong.

Into the open air



By MARK MIZELL

APPENDIX R: Other Funding Mechanisms and Resources

<p>Land Trusts</p>	<p>Generally, these are private nonprofit land conservation organizations whose mission may involve the conservation of wildlife habitat, shorelands, farms, forests, and other valuable open space and resource lands. Land trusts use a variety of mechanisms to meet their goals. These may include fee acquisition, conservation easements, bargain sales, donations and life estates. Land trusts often work in partnership with public agencies to conserve high-value sites. Land trusts include national and international organizations such as the The Nature Conservancy and Trust for Public Lands, and local and regional organizations. Land trusts working in the lower Columbia and north coast regions include the North Coast Land Conservancy and Columbia Land Trust.</p>		<p>purposes. Districts may consist of contiguous or noncontiguous territory located in one or more adjoining counties. The formation of districts may be initiated by citizens petition or by order of Boards of County Commissioners, as provided in ORS 198.705-955. The formation of the district must be placed before voters if the proposal includes a request for an operating levy, and a separate vote must occur if the proposal includes a request for bonded indebtedness for purposes of capital construction. Districts may collect voter-approved property taxes, issue general obligation bonds, and sell voter-approved revenue bonds, as provided in the statute. The governing body is an elected 3- or 5-member board.</p>
<p>Park and Recreation Districts</p>	<p>Chapter 266 Oregon Revised Statutes authorizes the formation of park and recreation districts. Districts may construct, reconstruct, alter, operate and maintain lakes, parks, recreation grounds and buildings, and may acquire real and personal property and rights of way to meet district</p>	<p>County Service Districts</p>	<p>Chapter 451 ORS authorizes the formation of county service districts to provide various public services and facilities and to provide coordinated master plans for the development of service facilities. This authority includes: "Public parks and recreation facilities, including land, structures, equipment, supplies and personnel necessary to acquire, develop and maintain such public park and recreation</p>

APPENDIX R: Other Funding Mechanisms and Resources

<p>County Service Districts, Cont.</p>	<p>facilities and to administer a program of supervised recreation areas.” Service districts may consist of contiguous or noncontiguous territory located in one or more counties. The formation of districts may be initiated by citizens petition or by order of Boards of County Commissioners, as provided in ORS 198.705-955. The formation of the district must be placed before voters if the proposal includes a request for an operating levy, and a separate vote must occur if the proposal includes a request for bonded indebtedness for purposes of capital construction. Districts may finance the construction, operation and maintenance of service facilities by voter-approved property tax assessments, general obligation bonds, revenue bonds and other methods as provided in the statute. Unlike P&R Districts, Boards of County Commissioners serve as the governing body.</p>		<p>a double majority – a majority of registered voters and a majority of those voting must approve the measure – unless the vote occurs during a general election. One disadvantage of general obligation bonds is the interest costs. (Source: Willamalane Park and Recreation District Comprehensive Parks Plan.)</p>
<p>General Obligation Bonds</p>	<p>These voter-approved bonds are an assessment on real property. Funding can be used for capital improvements, but not maintenance. This property tax is levied for a specified period of time, usually 10-30 years. As with serial levies, passage requires</p>	<p>Revenue Bonds</p>	<p>These bonds are sold and paid from the revenue produced from the operation of a facility. (Source: Willamalane Park and Recreation District Comprehensive Parks Plan.)</p>
		<p>Local Option Taxes</p>	<p>Chapter 280 ORS authorizes counties and other subdivisions of the state to enact, with voter approval, local option property taxes for the purpose of “financing the cost of any service, project, property or equipment which such subdivision has lawful power to perform, construct, or acquire, and of repairs and improvements thereof and of maintenance and replacement thereof.” The ballot measure must qualify under section 11(8), Article XI, of the Oregon Constitution, which requires, in addition to a majority vote, that at least 50% of registered voters eligible to vote cast a ballot unless the</p>

APPENDIX R: Other Funding Mechanisms and Resources

<p>Local Option Taxes, Cont.</p>	<p>election is held during a general election in an even-numbered year. The period of the levy shall not exceed five years, unless the tax is for capital projects. In the case of funding for capital projects, the period of the levy may be up to 10 years or the useful life of the capital project, whichever is less. A county may also obtain these funds as provided in the statute and advance them to a County Service District for approved district services and facilities.</p>		<p>improvements to be constructed. Reimbursement fees relate to capital improvements already constructed, or under construction when the fee is established, for which the local government determines capacity still exists. Local governments must establish or modify systems development charges by an ordinance or resolution that sets forth a methodology as provided in the statute and that is available for public inspection. Moreover, prior to establishment of the systems development charge, "a local government shall prepare a capital improvement plan, public facilities plan, master plan or comparable plan that includes a list of capital improvements that the local government intends to fund, in whole or in part, with revenues from an improvement fee and the estimated cost, timing and percentage of costs eligible to be funded with revenues from the improvement fee for each improvement."</p>
<p>Systems Development Charges</p>	<p>Chapter 223 ORS authorizes local governments to impose systems development charges to help provide orderly growth and development of Oregon communities. Systems development charges may be used for capital improvements only, and the definition of capital improvements specifically includes park and recreation facilities. The systems development charge is "a reimbursement fee, an improvement fee or a combination thereof assessed or collected at the time of increased usage of a capital improvement or issuance of a development permit, building permit or connection to the capital improvement." Improvement fees relate to capital</p>		

APPENDIX R: Other Funding Mechanisms and Resources

<p>Partnerships and Volunteers</p>	<p>Volunteers and partner organizations may provide a variety of maintenance and improvement services to support the parks department. The level of volunteer service will vary depending on the number of volunteers, timing and availability, skills, equipment and other resource needs, and the capacity of the department to organize and supervise programs and events.</p>		<p>donations through mechanisms such as wills. Community fundraising events – such as annual auctions – can also support park, recreation, and open space facilities and projects.</p>
<p>Private Grants, Donations, and Gifts</p>	<p>Many private-sector trusts and foundations provide funding for park, recreation and open space projects. Grants from these sources are typically allocated through a competitive application process – similar to public-sector grants – and vary dramatically in size based on the financial resources and funding objectives of the granting organization. In addition, gifts and donations from private individuals and businesses can make important contributions to parks and recreation services and facilities. The donation of land or land value has helped expand many municipal park systems throughout the northwest. Philanthropic giving is another, related source of project funding. These contributions can include cash gifts and</p>	<p>ODOT Highway Fund</p>	<p>ORS 366.514 allows a portion of the funds received by the by any county from the State Highway Fund to be expended as necessary to provide footpaths and bicycle trails, including curb cuts or ramps as part of the project. Footpaths and bicycle trails, including curb cuts and ramps as part of the project, shall be provided wherever a highway, road or street is being constructed, reconstructed or relocated. <u>Funds received from the State Highway Fund may also be expended to provide footpaths and trails along other highways, roads and streets and in parks and recreation areas.</u></p>

APPENDIX S: Clatsop County Travel Economic Impacts 1991-2005p (Oregon Tourism Commission)

	1991	1999	2000	2001	2002	2003	2004
Total Direct Travel Spending (\$Million)							
Visitor Spending at Destination	178.5	279.5	305.6	319.8	325.9	323.4	337.4
Other Travel*	0.4	0.6	0.6	0.6	0.5	0.3	0.4
Total Direct Spending	178.9	280.1	306.2	320.3	326.4	323.7	337.7
Visitor Spending by Type of Traveler Accommodation (\$Million)							
Hotel, Motel	79.4	133.7	147.5	154.4	156.9	154.8	163.1
Private Campground	7.7	9.4	9.7	10.0	10.3	10.6	11.1
Public Campground	9.3	11.3	11.7	12.2	12.7	13.0	13.3
Private Home	3.7	4.9	5.0	5.2	5.4	5.5	5.6
Vacation Home	8.4	13.6	14.9	15.5	15.9	16.2	16.8
Day Travel	70.0	106.6	116.6	122.4	124.8	123.3	127.5
Spending at Destination	178.5	279.5	305.6	319.8	325.9	323.4	337.4
Visitor Spending by Commodity Purchased (\$Million)							
Accommodations	39.0	64.3	69.4	71.6	73.3	73.7	78.2
Food & Beverage Services	53.4	83.8	91.6	96.4	98.7	98.1	103.2
Food Stores	17.3	25.8	27.9	29.5	29.9	30.3	32.1
Ground Tran. & Motor Fuel	2.8	4.0	5.1	5.0	4.8	5.6	6.4
Arts, Entertainment & Recreation	27.3	42.4	46.6	49.1	49.8	49.1	50.7
Retail Sales	38.8	59.2	64.9	68.2	69.4	66.5	66.8
Air Transportation (visitor only)	0.0	0.0	0.0	0.0	0.0	0.0	0.0
Spending at Destination	178.5	279.5	305.6	319.8	325.9	323.4	337.4
Industry Earnings Generated by Travel Spending (\$Million)							
Accommodations & Food Service	38.4	61.4	66.8	69.8	71.4	71.3	75.0
Arts, Entertainment & Recreation	8.5	13.1	14.5	15.2	15.5	15.2	15.4
Retail**	6.5	9.8	10.7	11.0	11.0	11.2	11.5
Auto Rental & other ground tran.	0.1	0.2	0.2	0.2	0.2	0.2	0.3
Air Transportation (visitor only)	0.0	0.0	0.0	0.0	0.0	0.0	0.0
Other Travel*	0.2	0.3	0.3	0.3	0.3	0.2	0.2
Total Direct Earnings	53.6	84.8	92.5	96.5	98.4	98.1	102.3
Industry Employment Generated by Travel Spending (jobs)							
Accommodations & Food Service	2,780	3,430	3,700	3,860	3,860	3,780	3,820
Arts, Entertainment & Recreation	610	760	820	840	860	830	830
Retail**	410	500	530	560	540	550	550
Auto Rental & other ground tran.	10	10	10	10	10	10	10
Air Transportation (visitor only)	0	0	0	0	0	0	0
Other Travel*	20	20	20	20	20	10	10
Total Direct Employment	3,820	4,710	5,080	5,290	5,280	5,180	5,230
Tax Receipts Generated by Travel Spending (\$Million)							
Local Tax Receipts	1.8	3.2	3.4	3.5	3.8	3.8	4.0
State Tax Receipts	3.0	4.7	5.2	5.4	5.4	5.5	6.4
Total Direct Tax Receipts	4.9	7.9	8.6	8.9	9.2	9.3	10.4

Details may not add to totals due to rounding.

*Other Travel includes resident air travel and travel agency services. **Retail includes gasoline.

Less than \$50,000 in spending, earnings or tax receipts = 'a'. Less than 5 employees = 'b'.

APPENDIX T: County-Owned Water Access Sites

CLATSOP COUNTY PROPERTY INFORMATION

Assessor's Account #	80708CC-100
Acreage	0.32
Zoning	AC-2
Real Market Value 04-05	3,681
Assessed Value	2,106
Location	Knappa Dock at the end of Knappa Dock Road
Other important information	

Knappa Dock

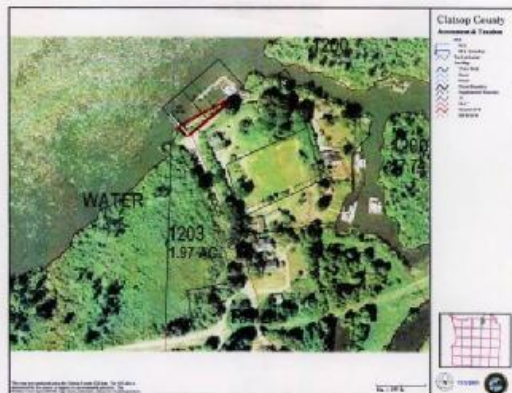
July 7, 1970 Boise Cascade sold dock property to Clatsop County for \$1.

Nov. 11, 1990 Clatsop County leased property to Gottfried John Haglund and Brian Haglund.

April 24, 1991 Clatsop County exchanged property with John Haglund.

At one time the dock was used by a ferry to transport cattle to an island to the north.

The property includes a dock and strip of land to the east between the road and the Columbia River. There is room to park 4-5 cars to the west of the dock. A short trail gives boaters access to put in non-motorized boats. The dock is currently used for fishing, swimming and tying up motor boats.



Knappa Dock Parcel

CLATSOP COUNTY PROPERTY INFORMATION

Assessor's Account #	70903-200
Acreage	0.30
Zoning	AF
Real Market Value 04-05	\$600
Assessed Value	\$329
Location	Next to Bridge and Walluski Creek off Walluski Creek Road
Other Important Information	Very narrow strip; currently used as a non-motorized boat launch site.

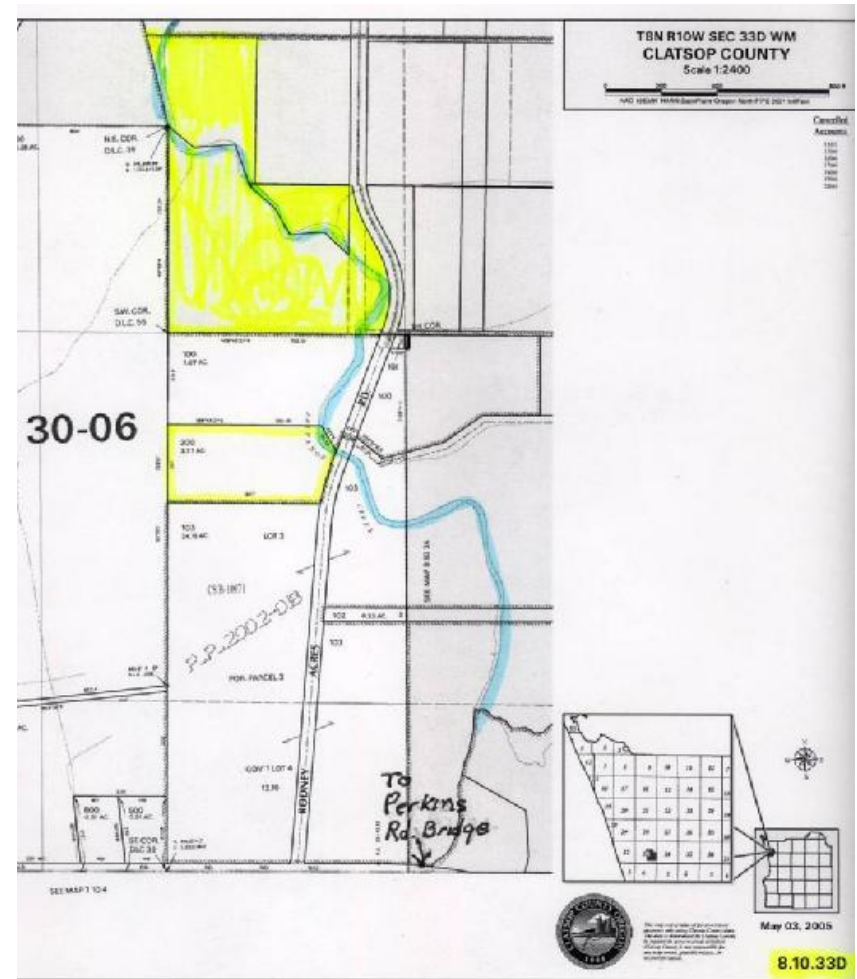
Walluski River Parcel

APPENDIX T: County-Owned Water Access Sites

CLATSOP COUNTY PROPERTY INFORMATION	
Assessor's Account #	81033A-700, 800, 1000
Acreage	11.74
Zoning	LW
Real Market Value 04-05	65,161
Assessed Value	21,571
Location	Off of Rodney Acres road in Warrenton.
Other important information	Skipanon creek runs through these three parcels.

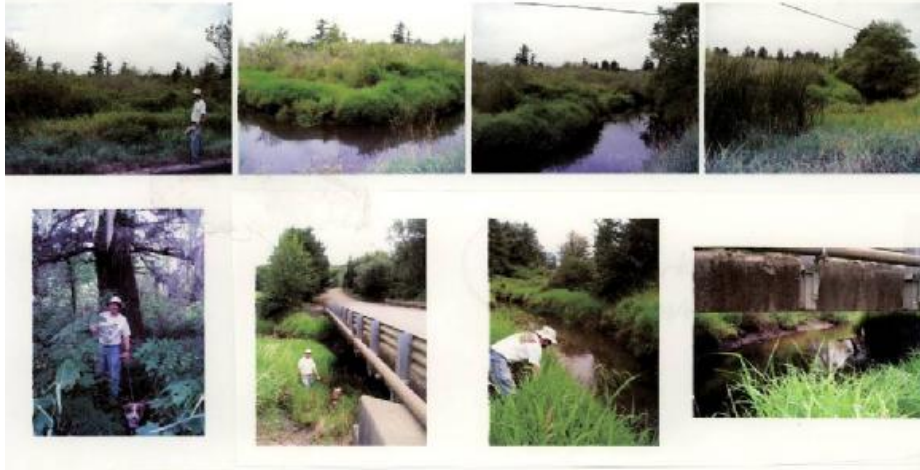
Assessor's Account #	81033D-200
Acreage	3.77
Zoning	LW
Real Market Value 04-05	6,967
Assessed Value	6,072
Location	Off of Rodney Acres road in Warrenton.
Other important information	Skipanon creek runs through this parcel.

Rodney Road Parcels



Rodney Road Parcels

APPENDIX T: County-Owned Water Access Sites



11.7 acres in three parcels, off Dolphin Road, Warrenton, includes Skipanon River

This impenetrable piece of land appears to be a spectacular natural wetlands, worthy of protection.

Providing parking access for paddling the Skipanon River directly at this site might be too damaging, and would at least require mitigation. However there is a possible access site close by, within county control, at the Perkins Road bridge over the Skipanon. That location already contains significant gravel fill suitable for limited parking, which could be made accessible to vehicles by removing only a few sections of recently installed guardrail associated with the small bridge. The river level is influenced by tides, and with some modification of the river bank, a small floating access dock down stream from and adjacent to the bridge seems feasible.

From this location, there are miles of pleasant paddling downstream (north) before encountering the 8th Street tidegates in Warrenton (with portage potential to continue to the Columbia River?), and a short upstream paddle (south) would provide a possible link with the new Fort to Sea Trail, where that trail crosses the Skipanon River, via a lovely heavy timber footbridge.

The Perkins Road bridge site also could provide access for maintaining a portable toilet. It also seems sensible to consider collaborating on toilet facilities with the Fort to Sea Trail.

Rodney Road Parcels

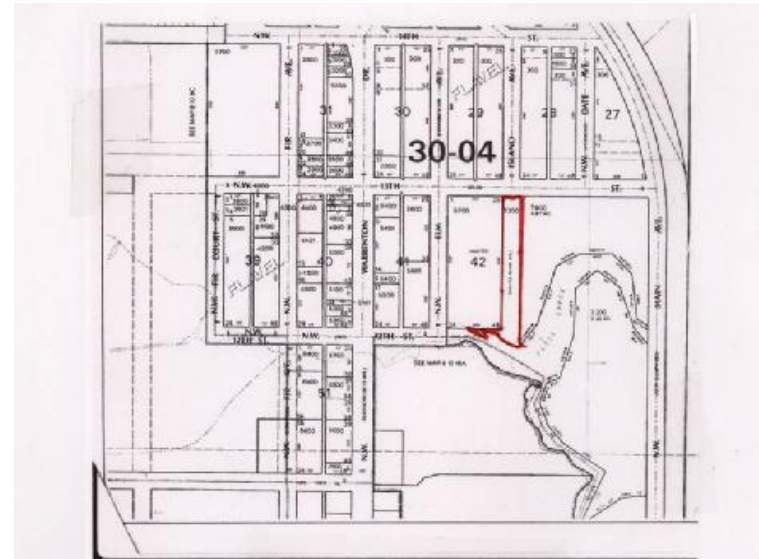
APPENDIX T: County-Owned Water Access Sites

CLATSOP COUNTY PROPERTY INFORMATION	
Assessor's Account #	81009D-7300
Acreage	1.03
Zoning	I2, Water Dependent Industrial
Real Market Value 04-05	31,846
Assessed Value	13,002
Location	In Tansy Point area of Warrenton, access from 13 th street.
Other important information	Vacated portion of Rhode Island and 3 rd Streets.

1.03 acres fronting Tansy Creek, on Tansy point in Warrenton

This property is technically a vacated road, which usually gets partitioned to adjacent property owners, but a subsequent foreclosure apparently caused it to revert to County ownership. A physical inspection on August 9, 2005 showed evidence of a recent survey. County staff were unaware of any activity regarding the survey, so the survey company (HLB & Associates) was contacted and informed Rec Lands member Gail Galen that they were working on a partition for Anderson Family Trust, the owner of adjacent parcel to the east, tax ID parcel 7400. All party's ownership records show this parcel still in County possession.

This parcel fronts Tansy Creek, accessible currently via an existing "social" trail running through the property (which may cross boundary lines). Tansy creek would provide a pleasant although not lengthy paddling experience. Tansy creek terminates at a set of tide gates into the Columbia River (see photo). It would be too difficult and dangerous to portage around these tide gates without significant alterations. However, Tansy Creek briefly parallels a beautiful, quiet segment of Warrenton Waterfront Trail, with abundant wildlife.

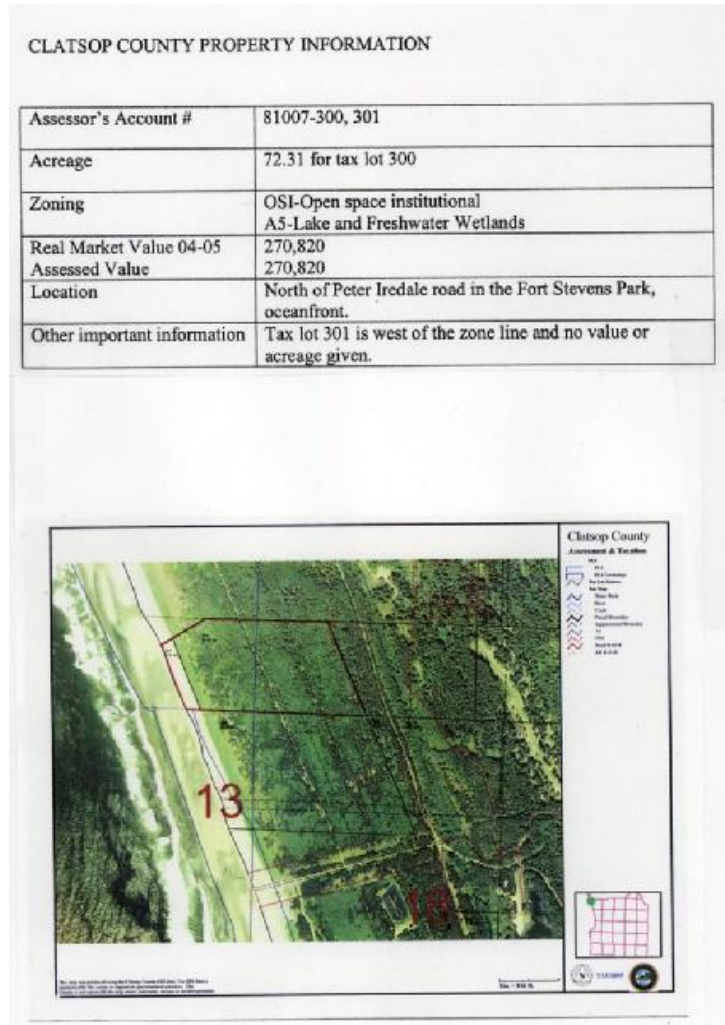


Tansy Creek Parcel

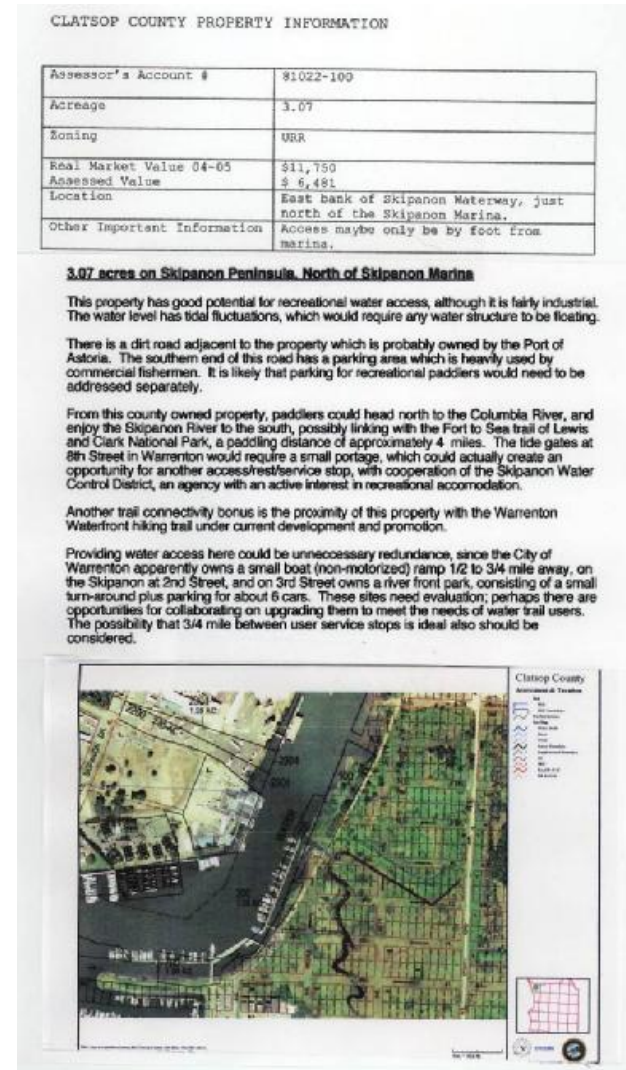


Tansy Creek Parcel

APPENDIX T: County-Owned Water Access Sites



Fort Stevens Parcel



Skipanon River Parcel

APPENDIX T: County-Owned Water Access Sites



Skipanon River Parcel



Skipanon River Parcel

APPENDIX U: Other County-Owned Parcels

CLATSOP COUNTY PROPERTY INFORMATION

Assessor's Account #	80819DA-200, 1000, 1100, 1200, 1400, 1500, 2000
Acreage	2.02
Zoning	RA-5
Real Market Value 04-05	48,497
Assessed Value	26,567
Location	Off of Claremont Road, next to proposed land trade with Oregon Department of Forestry and Nygaard, et al.(GND)
Other important information	Timber cruise dated October 3, 2001 has a stumpage value of \$21,050, however, Jim Capellen informed that this is one of the few 300 year old spruce groves left in Clatsop County, should be used as an educational tool for schools about old growth forest. Access is platted but not improved, steep hill to get there.

Claremont Road Parcels



Claremont Road Parcels

APPENDIX U: Other County-Owned Parcels

CLATSOP COUNTY PROPERTY INFORMATION

Assessor's Account #	80917CA-1001, 1700, 2200, 2300, 2400, 25000 80917CB-3600
Acreage	8.99
Zoning	R-2
Real Market Value 04-05 Assessed Value	245,042 159,357
Location	South slope of Astoria, between Clatsop County Public Works area and Astoria Middle School
Other important information	Astoria Middle School had a nature trail built several years ago with a 5-year license agreement for maintenance, that agreement has since lapsed and has not been renewed. There is also a stream running thru this area and it is my understanding that the trail has been vandalized.



North of County Public Works Parcels

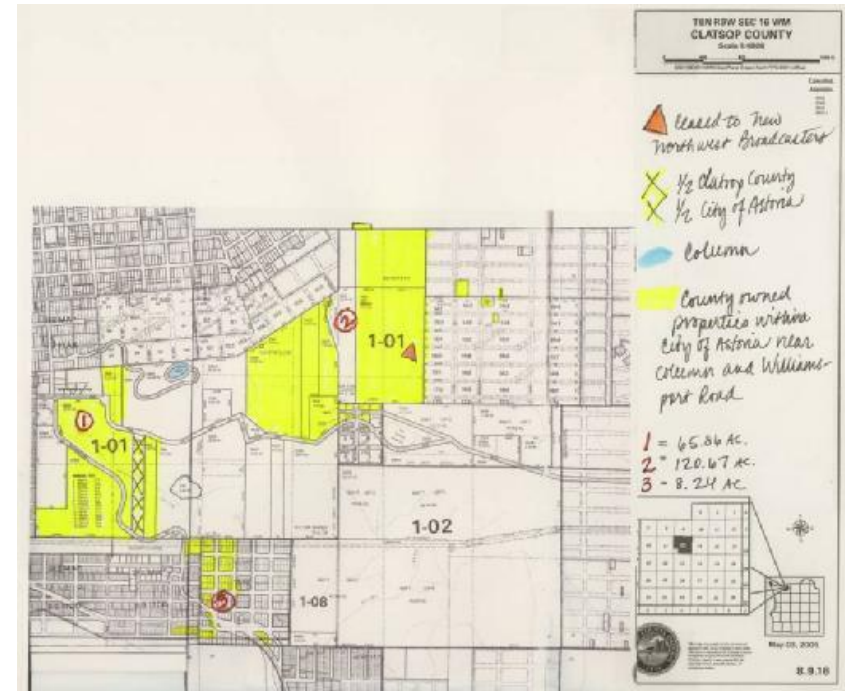


North of County Public Works Parcels

APPENDIX U: Other County-Owned Parcels

CLATSOP COUNTY PROPERTY INFORMATION	
Assessor's Account #	80917-500, 800, 1000 and ½ of tax lot 900. Group # 1 on Map
Acreage	62.91
Zoning	Mostly LR
Real Market Value 04-05	681,430
Assessed Value	446,719
Location	In the city of Astoria, South of Pipeline road and on both sides of Williamsport Road.
Other important information	Values and acreage include ½ of tax lot 900. This area is in city limits of Astoria and to the best information available was last logged around 100 years ago.
Assessor's Account #	80909-1900, 80909CA-10800 80916-400, 1300, 1381, 1601, 1700, 1800, 1900, 2000, 2201, 2301 Group # 2 on map
Acreage	119.88
Zoning	LR
Real Market Value 04-05	164,551
Assessed Value	112,918
Location	East of Astoria Column and north of the City's high-pressure water reservoir.
Other important information	Tax lot 400 has a portion of it leased to New Northwest Broadcasters for their FM tower. Base of tower is fenced off. Portion of this larger area was logged in the late 70's. One City of Astoria parcel separates this group of county owned properties.
Assessor's Account #	80916CC-100, 200, 900, 1000, 1100, 1200, 1300, 2400, 2900, 3000, 4400, 4900 and 80917DD-100, 5100
Acreage	7.89
Zoning	Mostly R-2
Real Market Value 04-05	4,827
Assessed Value	3,607
Location	South and east of Williamsport Road and some south of Hwy 202, in the Youngs Bay.
Other important information	Most of them do not have improved access, although it is platted on the maps. Group #3 on map

Williamsport Road Parcels



Williamsport Road Parcels

APPENDIX U: Other County-Owned Parcels



Williamsport Road Parcels