

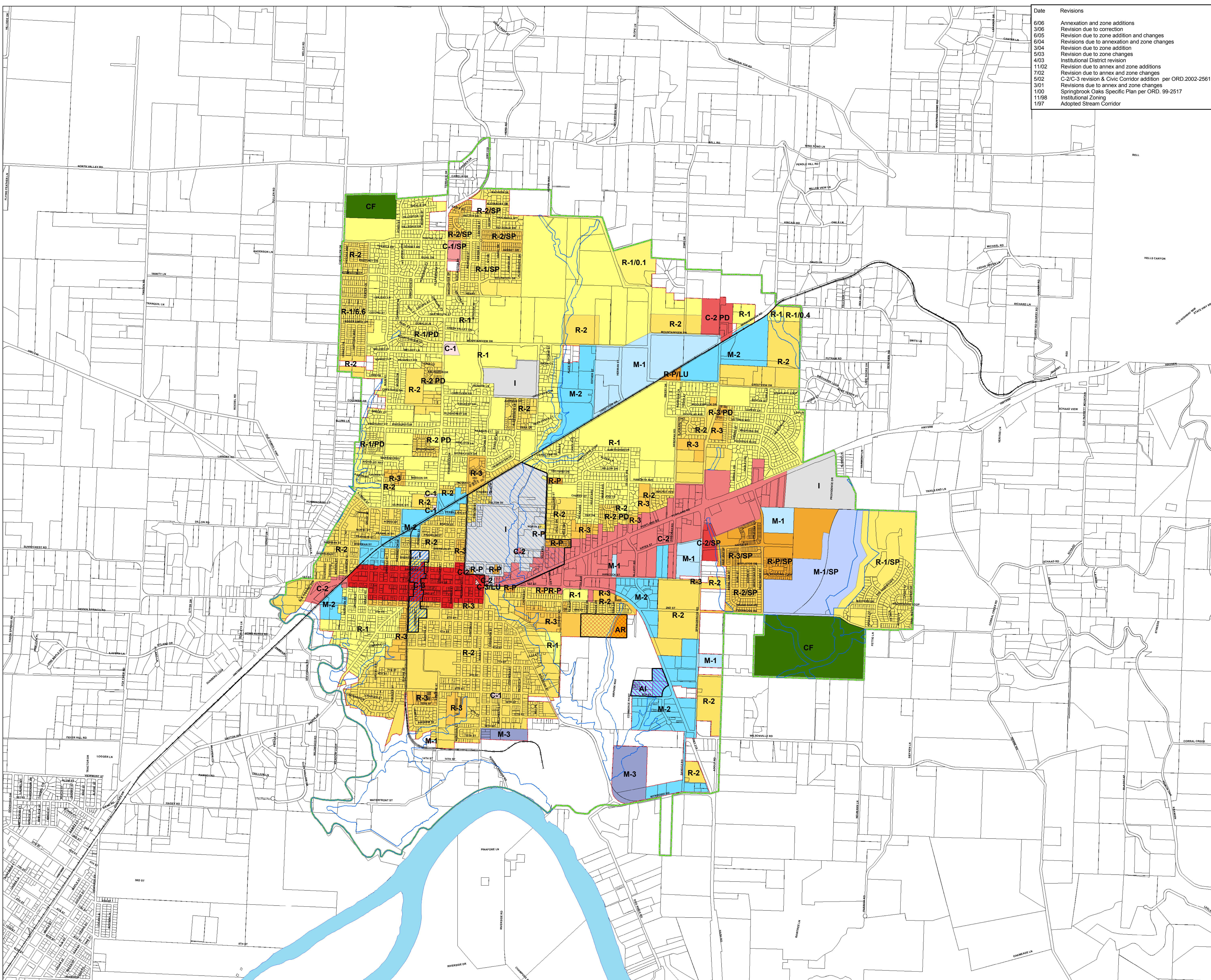
Date	Revisions
6/06	Annexation and zone additions
3/06	Revision due to correction
6/05	Revision due to zone addition and changes
6/04	Revisions due to annexation and zone changes
3/04	Revision due to zone addition
5/03	Revision due to zone changes
4/03	Institutional District revision
11/02	Revision due to annex and zone additions
7/02	Revision due to annex and zone changes
5/02	C-2/C-3 revision & Civic Corridor addition per ORD.2002-2561
3/01	Revisions due to annex and zone changes
1/00	Springbrook Oaks Specific Plan per ORD. 99-2517
11/98	Institutional Zoning
1/97	Adopted Stream Corridor

City of Newberg, Oregon

NEWBERG ZONING MAP

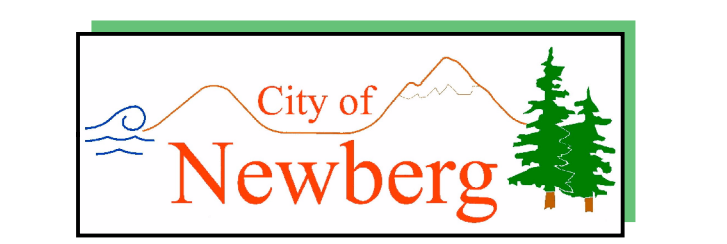
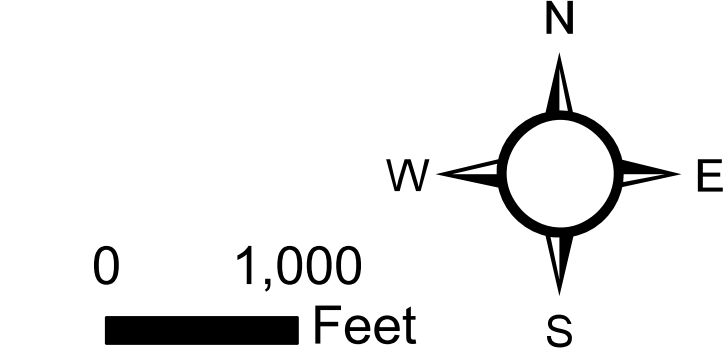
Including the Urban Growth Boundary

- ZONING**
- C-1 Neighborhood Commercial
 - C-1/SP Specific Plan
 - C-2 Community Commercial
 - C-2 PD Planned Unit Development
 - C-2/SP Specific Plan
 - C-3 Central Business District
 - C-3/LU
 - CF Community Facility
 - I Institutional
 - M-1 Limited Industrial District
 - M-1/SP Specific Plan
 - AI Airport Industrial
 - M-2 Light Industrial District
 - M-3 Heavy Industrial District
 - R-1 Low Density Residential
 - R-1/SP Specific Plan
 - R-1/1/1 PD Planned Unit Development
 - R-1/0.1 Low Density 0.1 d.u./ac.
 - R-1/0.4 Low Density 0.4 d.u./ac.
 - R-1/6.6 Low Density 6.6 d.u./ac.
 - R-1/SP Specific Plan
 - R-2 Medium Density Residential
 - R-2 PD Planned Unit Development
 - R-2/SP Specific Plan
 - R-3 High Density Residential
 - R-3 PD Planned Unit Development
 - R-3/SP Specific Plan
 - R-P Residential Professional
 - R-P/SP Specific Plan
 - R-P/LU Residential Profession - Limited Use Overlay
 - AR Airport Residential
 - Civic Corridor Overlay
 - Institutional Overlay
 - Airport Industrial Overlay
 - Airport Residential Overlay
 - City Limits
 - Urban Growth Boundary
 - Stream Corridor



IMPORTANT NOTICE TO ALL USERS:
 DISCLAIMER AND LIMITATION OF LIABILITY
 This information is not guaranteed to be accurate and may contain errors and omissions. The City of Newberg provides NO WARRANTY AS TO THE MERCHANTABILITY OR FITNESS FOR A PARTICULAR PURPOSE FOR ANY INFORMATION HEREIN.

This map is created from various data sources and is subject to change without notice. This map is intended for general planning purposes only.



Map created by Jan Wolf
 Public Works Department - Engineering
 Map Document: (C:\Digs\planzones.mxd)
 07/12/2006 - 3:58:13 PM

The most current edition of this map can be found at www.ci.newberg.or.us