

LANDSCAPE RESOURCE SURVEY
University of Oregon Campus Heritage Landscape Plan
Eugene, Lane County, Oregon • Spring 2007

■ **RESOURCE IDENTIFICATION & SUMMARY**

LANDSCAPE AREA NAME

Southwest Campus Green (dd)

HISTORIC NAME(S)

none known

CAMPUS PLAN DESIGNATION

Green

CURRENT HISTORIC DESIGNATION

No historic designation

ERA(S) OF GREATEST SIGNIFICANCE

Lawrence/Cuthbert Era

LEVEL OF HISTORIC SIGNIFICANCE

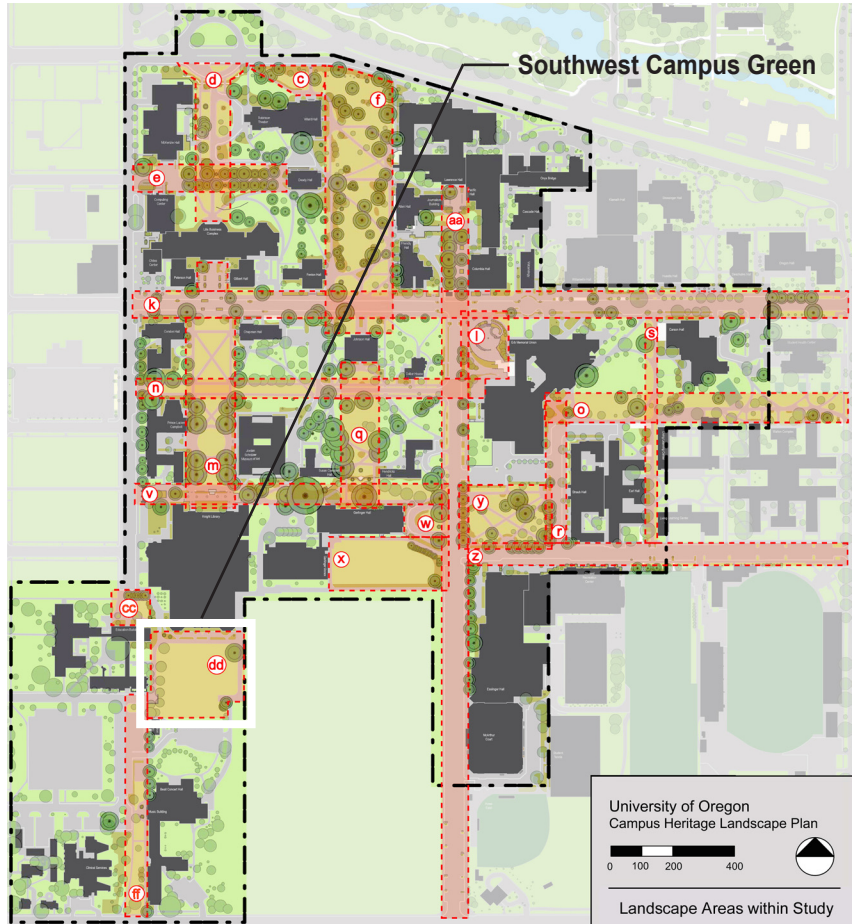
Low

LEVEL OF INTEGRITY

Fair

RANKING

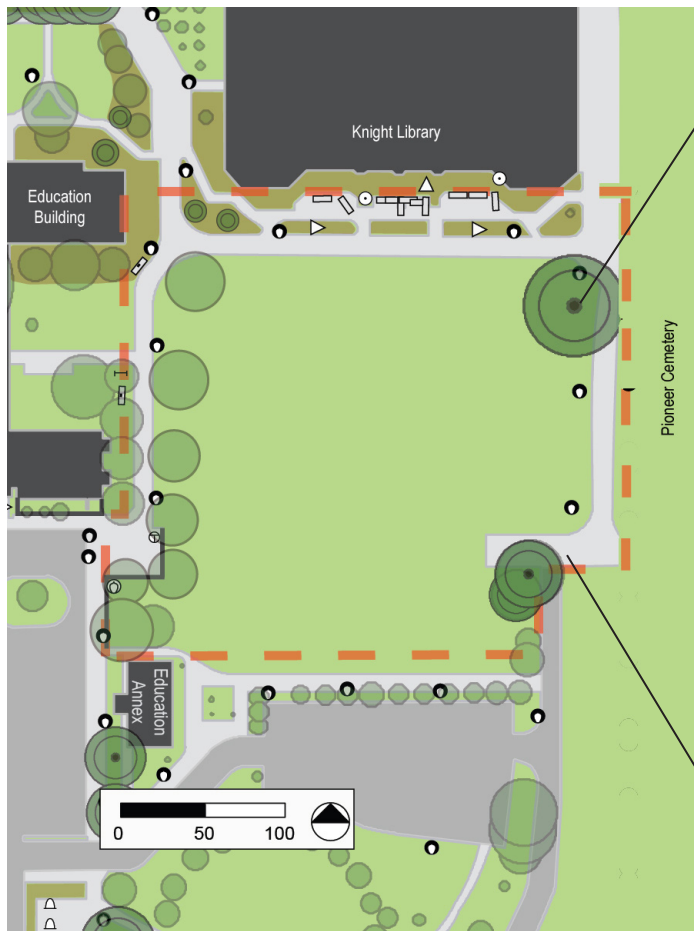
Tertiary



View looking south across the Green, with the Education East Building at right.

Landscape Resource Survey
SOUTHWEST CAMPUS GREEN

LANDSCAPE AREA SITE MAP — Highlighting existing elements from the period of significance (1876-1974).



This Ponderosa pine dates to the Inception Era

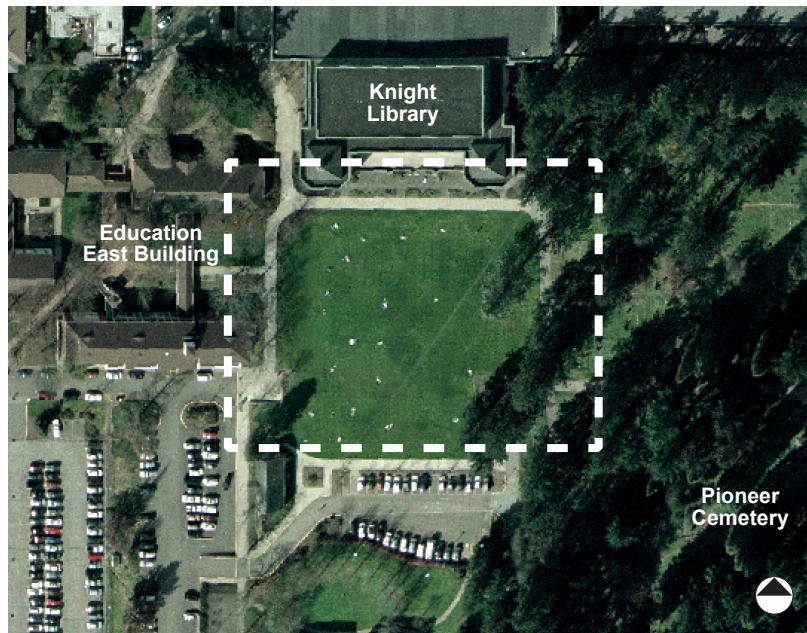
This is a remnant of 16th Avenue which connected to the Pioneer Cemetery

LEGEND			
TRASH CANS	⊕	BIKE RACKS	⌒
NEWS STANDS	Ⓝ	TREES FROM PERIOD OF SIGNIFICANCE	● (dark green)
SMALL SCALE FEATURES FROM PERIOD OF SIGNIFICANCE	▲	MEMORIAL TREES AFTER PERIOD OF SIGNIFICANCE	● (medium green)
SMALL SCALE FEATURES AFTER PERIOD OF SIGNIFICANCE	△	CAMPUS TREES AFTER PERIOD OF SIGNIFICANCE	● (light green)
PLAQUES AND MEMORIALS FROM PERIOD OF SIGNIFICANCE	⊙	UNIVERSITY STANDARD LIGHTPOSTS	⦿
PLAQUES AND MEMORIALS AFTER PERIOD OF SIGNIFICANCE	○	NON-UNIVERSITY STANDARD LIGHTPOSTS	⦿ (with dot)
BENCHES FROM PERIOD OF SIGNIFICANCE	▬ (thick)	LANDSCAPE AREA BOUNDARY	- - - (red dashed)
BENCHES AFTER PERIOD OF SIGNIFICANCE	▬ (thin)		
MEMORIAL BENCHES AFTER PERIOD OF SIGNIFICANCE	▬ (thin with dot)		

* note: Period of Significance refers to the project period of 1876-1974

SUMMARY OF EXISTING HISTORIC FEATURES

The Green has been an open space used for student recreation and physical education since the Lawrence/Cuthbert Era. This section of campus has seen a great deal of change since the end of the Mid-Century Era, most notably the southward advancement of the Knight Library and the demolition of the Veterans Dorms. The Green contains few historic features, the most significant being a large Ponderosa pine that dates to the Inception Era.



2004 aerial of the Southwest Campus Green



View looking north toward Knight Library.



View east toward Pioneer Cemetery.

■ **RESOURCE HISTORY**

ERA(S) OF GREATEST SIGNIFICANCE

Designated Eras within the Period of Historic Significance Determined for this Survey (1876-1974) are listed below. Check the era/eras determined to be of highest significance for this landscape area.

- Inception Era (1876-1913)
- Lawrence/Cuthbert Era (1914-1946)
- Mid-Century Era (1947-1974)

DATE(S) OF CONSTRUCTION DURING ERA(S) OF SIGNIFICANCE

- 1921: The Education Building is constructed.
- 1924: Music Building is constructed.
- 1937: Knight Library is constructed.

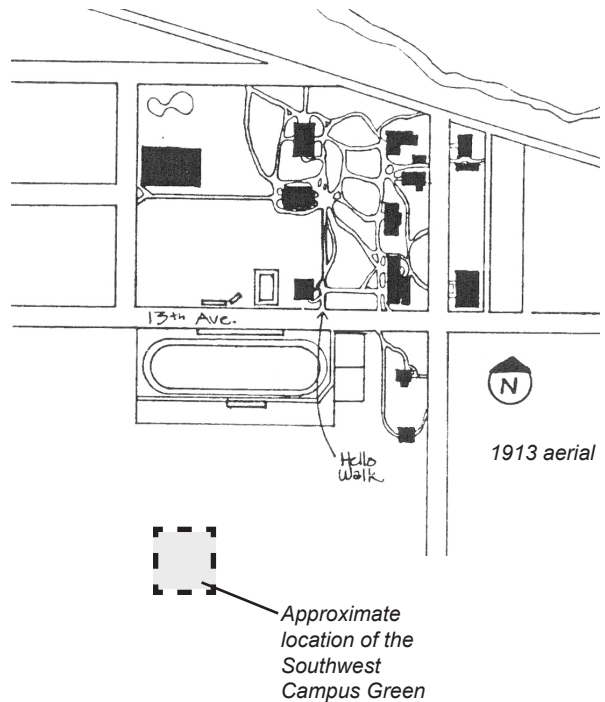
MAJOR ALTERATIONS OCCURRING AFTER ERA(S) OF SIGNIFICANCE

- 1947: The Veteran's Dorms are constructed.
- 1950: First Library addition.
- 1962: Veterans' Dorm II is torn down.
- 1966: Second Library addition.
- Circa 1970: Veterans' Dorm I is torn down.
- 1979: The Education Annex is moved to its present location in the southwest corner of the Green.
- 1994: Third Library addition is completed, and a row of Douglas firs and a cemetery access road from the Inception Era removed. The Green was reduced to its current size.

ERA DESCRIPTION:

The Inception Era (1876-1913)

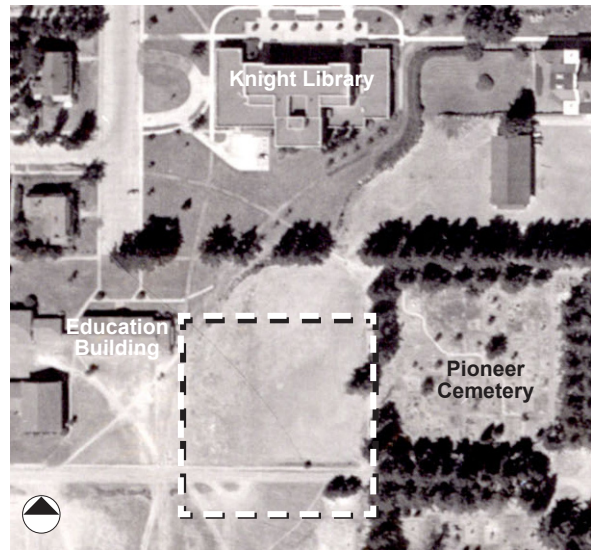
In 1913 the Green was an open field near the Pioneer Cemetery. Several farmhouses were located near the field, and the site was partially framed by a row of Douglas firs to the north and the trees of the Cemetery to the east. A dirt road (16th Avenue) traversed the green and entered the Cemetery.



ERA DESCRIPTION:

The Lawrence/Cuthbert Era (1914-1946)

During this era the university constructed the Music Building, Knight Library, and the Education Building. The University High School was also constructed and used the Green for athletic events. By the end of the era the Green was still an open lawn bordered by the 16th Avenue/Cemetery road to the south, the Pioneer Cemetery to the east, the row of firs to the north with the Knight Library beyond and the Education/University High School complex to the west. A curving hedge on the north edge of the Green is the only other distinguishing feature.

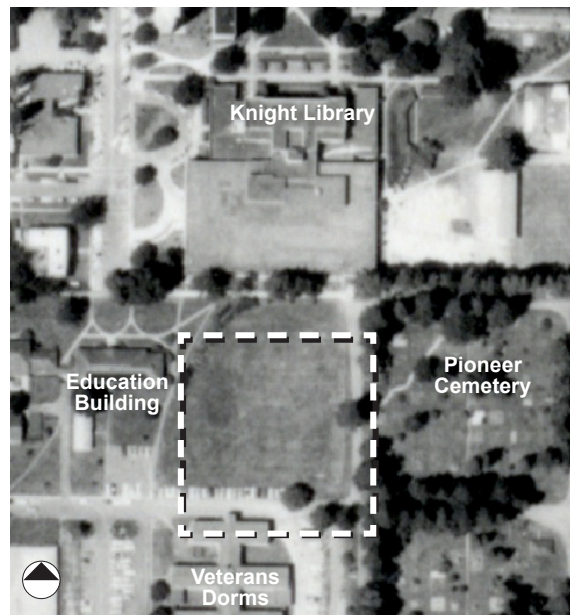


1944 aerial

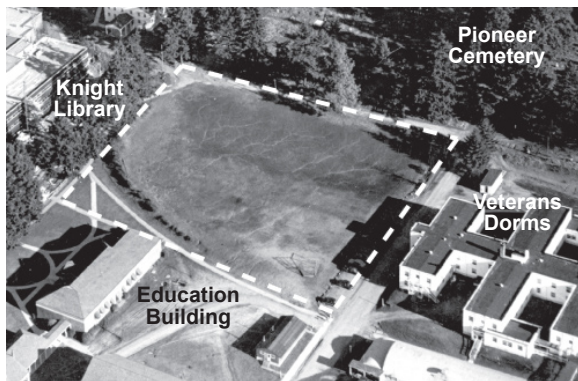
ERA DESCRIPTION:

The Mid-Century Era (1947-1974)

During this era two Veterans Dorms were placed south of the Green, and by the end of the era were removed. Knight Library expanded southward towards the edge of the Green, abutting the row of fir trees. The university annexed the University High School, of which the Green had been used for physical education and other recreational activities. The Green started being used for informal university athletics and band practice. The curving hedge on the north edge of the Green was still in place from the previous era.



1968 aerial



1950 aerial, with the original size and configuration of the Green shown dashed.

■ **DESCRIPTION OF LANDSCAPE CHARACTERISTICS**

LAND USE

Describing both the historic and current use of the Area.

As the largest open space in the area, the Green accommodates informal athletic activities and the occasional outdoor recreation class, along with some formal university events. The wide open field and the south facing benches are popular locations for passive recreation and sunbathing. This space also preserves the view of the Knight Library south façade.

Historically, this space was used for physical education purposes and as a practice field for the University High School. During the Mid-Century Era the southern end of the Green was used for Veteran housing.

DESIGN INTENT

Describing the overall design intent of the Area.

The design intent of the Green was to provide an open lawn for recreation purposes.

SPATIAL ORGANIZATION

Describing the arrangement of physical elements that create a three-dimensional sense of space.

This open space is formed by the Knight Library to the north, the Education complex to the west, and Pioneer Memorial Cemetery's mature landscape (particularly the large Douglas fir trees) to the east. Its southern edge is not particularly defined.

Aside from this space's use as an informal sports field, the Southwest Campus Green bears little resemblance to its historic character. Although Knight Library, Beall Hall, the Education Annex and the Education Building were all built within the period of significance, the areas facing the Green are additions that came afterwards.

TOPOGRAPHY & SITE ORIENTATION

Describe/document gradient, slope orientation and solar access.

The Southwest Campus Green is on a relatively flat plane that drains slightly to the northwest (see diagram below). There is unobstructed solar access throughout the entire Green.

VEGETATION

Describing tree, plant, shrub, ground layer groupings and arrangements.

The Green is primarily lawn with a large ponderosa pine from the Inception Era, and several Douglas firs bordering Pioneer Cemetery. More recent maples planted just inside the field mark the western edge. A row of gleditsia grows in a narrow parking strip between the sidewalk and parking lot on the southern edge.

There are symmetrically arranged shrub and perennial beds next to Knight Library's 1994 addition. These beds are planted informally with mock orange, abelia, spirea, choisya, osmanthus, lavender and ornamental grasses.



The area's topography.



Diagram showing circulation paths.



Significant views through the area.

NATURAL SYSTEMS AND FEATURES

Describing natural processes, water flow, and habitat, if applicable.

The interior of the Green has no habitat value, but the adjacent cemetery and its large native conifers, have high habitat value.

Water that falls on the virtually flat field largely drains on site.

BUILDINGS/STRUCTURES

Describing built physical elements in and around perimeter of the Area, and their relationship to the landscape.

Buildings that are adjacent to and help define the Southwest Campus Green include the Education Building (1921 and 1980), the Education Annex (1923), and Knight Library (principally its 1994 addition). All buildings contain secondary entrances that open to the Green.

SMALL-SCALE ELEMENTS

Describing elements such as monuments, markers, seating, fences etc.

Several non-historic small scale features are present, and include a seat-wall, benches, trash and recycling cans, a fire hydrant, three small statues, plaques and a sign.

EDGE CONDITIONS AND ADJACENCIES

Describing the perimeter of the site and important adjacent connections to spaces beyond.

Knight Library, with its large south facing windows, defines the northern edge of the Green. The Education buildings define the western edge of the space, but they are arranged around their own courtyard with minimal connection to the Green. The large Douglas firs of the Pioneer Cemetery form a definable boundary to the Green's eastern edge. The southern edge is formed by a parking area and a row of young trees. Connections are made to Kincaid Green and the Southwest Campus Axis.

CIRCULATION

Describing movement paths and associated materials for: pedestrian; automobile; bicycle; other (e.g. system, alignment, materials, character).

The north, east, and west edges contain important pathways that connect to the main campus (see diagram, pg. 6). The pathway along the northern edge of the Green also is part of the 15th Avenue designated bike route. There is a well used but unofficial path that crosses through the field diagonally, and another that continues east through the cemetery.

Parking exists along the southern periphery of the site and the pathway that runs along the east edge acts as a fire lane and access to Pioneer Cemetery. There is a small parking space with fire-hydrant access along the south portion of the east walkway.

VIEWS/VISTAS

Describing focal points and views to and from the Area.

The open field allows for sweeping views of the southern façade of the Knight Library (see diagram, pg.6). Conversely, the window seating within the Knight Library looks out upon the sunny green.

■ **DETERMINATION OF SIGNIFICANCE**

CURRENT HISTORIC DESIGNATION

- City Landmark
- National Register - full listing
name:
- National Register - partial listing
name:
- National Historic Landmark
- No historic designation

NATIONAL REGISTER CRITERIA

Criterion A: Significant Events

Describe events with the landscape area that have influenced the broad patterns of campus history.

The Southwest Campus Green meets criterion A for the continuous role it has played as an open recreation space since its creation. It served the University High School as well as the University of Oregon as an athletic field and practice green for marching bands. It also provided a place for informal events and outdoor recreation classes.

Criterion B: Significant People

Describe connections with the lives of significant persons, including designers.

Not applicable

Criterion C: Distinctive Characteristics

Describe elements that embody the distinctive characteristics of a type, period, or method of construction, or that represent the work of a master, or that possess high artistic values.

Not applicable

LEVEL OF SIGNIFICANCE

Rank the landscape area in term of its level of contribution to the historic significance of the university campus as a whole.

- High Significance
Considerable contribution to the history of the campus and its growth.
- Medium Significance
Noteworthy contribution the history of the campus and its growth.
- Low Significance
Discernable contribution to the history of the campus and its growth.
- Very Low/No Significance
No discernable importance to the history of the campus and its growth.

■ DETERMINATION OF INTEGRITY

Integrity of the Landscape Area is evaluated based on the retention of the historic characteristics described in the categories below.

LOCATION / SETTING

Are important elements still in their original location and configuration?

Although the Southwest Campus Green remains an open field, many of the structures that front it are not from the era of significance.

DESIGN

How has the general structure of the landscape changed since its period of significance?

Historically, the Southwest Campus Green was an open space used for informal passive and active recreation, and continues this usage today. Knight Library's 1994 addition changed its size and shape.

MATERIALS

Are original materials/vegetation that were used to structure and shape the landscape still present?

The Ponderosa pine within the Green and the large conifers along the Pioneer Cemetery all date back to the period of significance or beyond. Likewise, the mowed lawn within the Green is in keeping with the historic design of the space.

WORKMANSHIP

Does the landscape retain characteristic workmanship from the period of significance?

There are no historic structures within the Green.

FEELING

Does the landscape evoke the period of significance?

The landscape somewhat evokes the era of significance.

ASSOCIATION

Is it possible to associate elements of the landscape with significant people/events?

Associations with significant people or events are not easily discernible.

■ INTEGRITY & CONDITION FINDINGS

HISTORIC INTEGRITY

Determine the level of historic integrity, based on the Era(s) of Significance – check one

- Excellent Integrity
Retains a very high percentage of original fabric, and the original design intent is apparent.
- Good Integrity
Retains a significant percentage of original fabric, with a discernable design intent.
- Fair Integrity
Original fabric is present, but diminished.
- Poor Integrity
Contains little historic fabric, and the original design intent is difficult to discern.

OVERALL CONDITION OF LANDSCAPE AREA

– check one

- Excellent
- Good
- Fair
- Poor

■ **RESOURCES**

— List all primary sources used (plans, maps, surveys, photographs, drawings, newspapers, periodicals, and autobiographies) and secondary sources (books, theses, guidebooks).

Dunton, F.E. and Schwan W.J., A Biological Map of the University of Oregon Campus: Showing the Specimen Trees on the Campus. July 1913. duplicate held by the University of Oregon Planning Office.

Eaton, Allen H. ed. The '02 Webfoot (Eugene: University of Oregon, 1901) 1-168.

Hendricks, Leland G. ed. The Oregana volume V (Eugene: the class of 1914, 1914).

Long, Stephen W. "Historic Continuity A Diagnosis Report" (Eugene: University of Oregon Office of Planning and Campus Development, 1980) 1-67.

Lowrie, Chris, "University acquires 13th Avenue." Eugene, Oregon Daily Emerald, 26 January, 1971.

Marshall Brothers, 1921 map of Campus, duplicate held by the University of Oregon Planning Office.

McMillan, Adell, A Common Ground. (Eugene, Oregon: Erb Memorial Union, 2003) 1-637.

The Oregana (Eugene: the class of 1945, 1945).

Rice, Donald B. ed. The Oregana volume V (Eugene: the class of 1914, 1914).

Sandahl, David A. and Castro, Ricardo. "An architectural history of the University of Oregon," (unpublished manuscript, University of Oregon, 1975) Architecture and Allied Arts Library.

Shellenbarger, Michael. ed. Harmony in Diversity: The Architecture and Teaching of Ellis F. Lawrence (Eugene: University of Oregon, 1989), 1-91.

Teague, EH. (2004, Oct. 10). The Architecture of the University of Oregon. Retrieved Mar. 1, 2006, from <http://libweb.uoregon.edu/guides/architecture/oregon/>

University of Oregon, 1935 map of Campus, duplicate held by the University of Oregon Planning Office.

University of Oregon, 1953 map of Campus, duplicate held by the University of Oregon Planning Office.

University of Oregon Catalogue: 1913-1914. (Eugene, Oregon: University of Oregon, 1914) 1-276.

University of Oregon Catalogue: 1945-1946. Campus Map (Eugene, Oregon: University of Oregon, 1945)

University of Oregon Catalogue: 1955-1956. Campus Map (Eugene, Oregon: University of Oregon, 1955)

University of Oregon Map Library, Aerial Photo Collection. Aerial photograph of the University of Oregon, 1936.

University of Oregon Map Library, Aerial Photo Collection. Aerial photograph of the University of Oregon, 1944.

University of Oregon Map Library, Aerial Photo Collection. Aerial photograph of the University of Oregon, 1947.

University of Oregon Map Library, Aerial Photo Collection. Aerial photograph of the University of Oregon, 1952.

University of Oregon Map Library, Aerial Photo Collection. Aerial photograph of the University of Oregon, 1960.

University of Oregon Map Library, Aerial Photo Collection. Aerial photograph of the University of Oregon, 1968.

Electronic version available on the University of Oregon Planning Office web page: <http://uplan.uoregon.edu/projects/HLP/hlpsurveyoflandareas.htm>

Survey research by Dustin Welch and Daniel Schaible.

Survey form completed in Spring 2006 under the supervision of Fletcher Farr Ayotte, Inc.

Edited by the University of Oregon Planning Office, Spring 2007.
