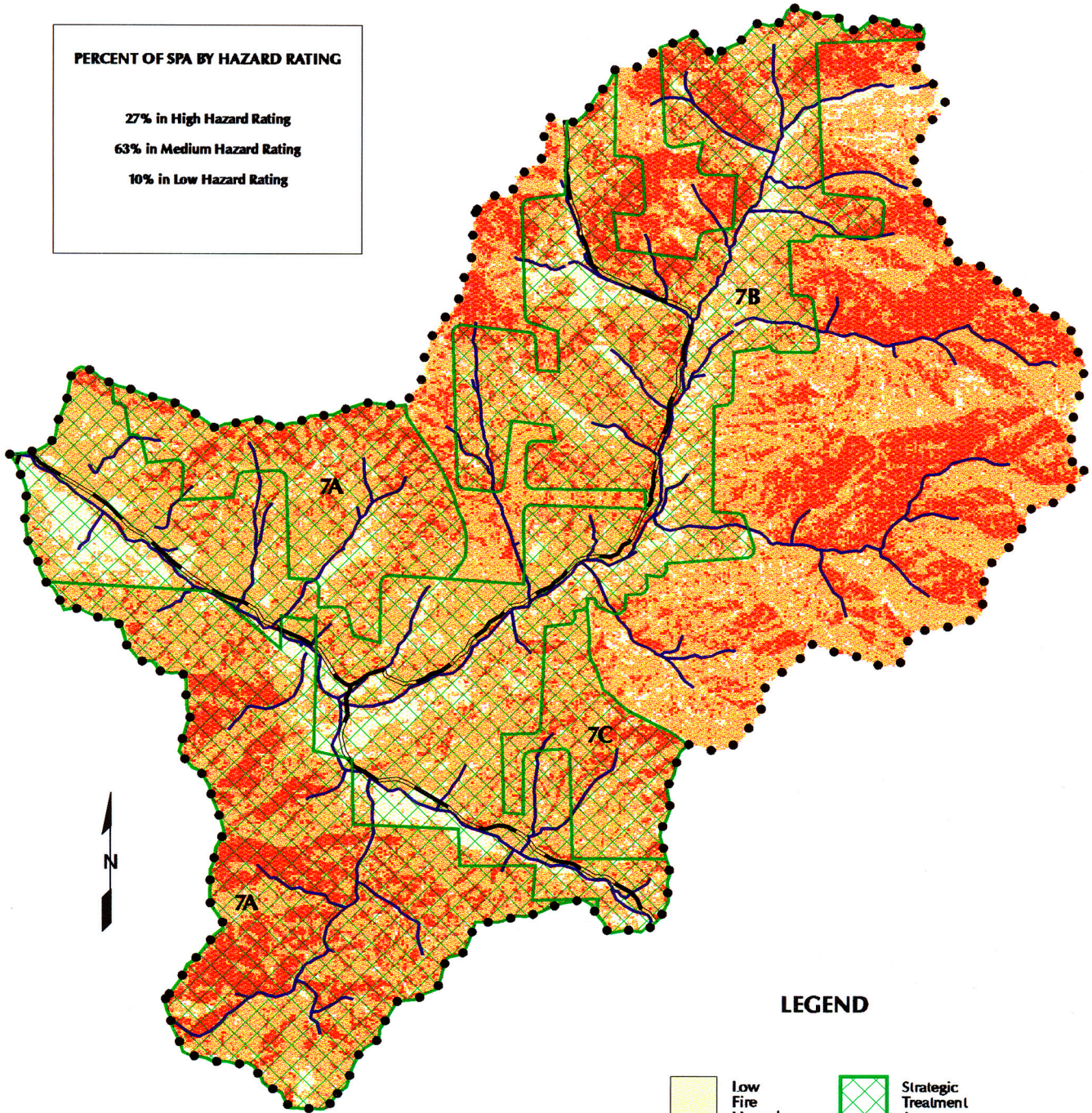




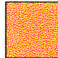

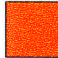


Fire Hazard Ratings and Strategic Treatment Areas Lower Little Applegate SPA (7)

PERCENT OF SPA BY HAZARD RATING

27% in High Hazard Rating
 63% in Medium Hazard Rating
 10% in Low Hazard Rating



LEGEND

- | | | | |
|---|--------------------|---|----------------------------------|
|  | Low Fire Hazard |  | Strategic Treatment Area |
|  | Medium Fire Hazard |  | Strategic Planning Area Boundary |
|  | High Fire Hazard |  | Major Road |
| | |  | Major Stream |

**LOWER LITTLE APPEGATE
STRATEGIC PLANNING AREA #7**

Recommendations for Fuel Reduction Work

7. Lower Little Applegate

- a. Recommendation: Complete planning of and implement fuel reduction portions of BLM's Bobar project.
- b. CARs are dense and high hazard. Recommendation: Promote fuel reduction work on private lands, private timber lands and adjacent federally managed lands as collaborative projects.
- c. Recommendation: Complete planning of and implement fuel reduction portions of BLM's Bald Lick & Prince Beaver projects.

**< #1 PRIORITY FOR ALL SPAs WITH CARs:
TO DO WORK AROUND HOMES >**

GLOSSARY:

SPA: Strategic Planning Area

CAR: Communities-at-Risk

LSR: Late Seral Reserve

T & E: Threatened & Endangered (species)

WUI: Wildland-Urban Interface