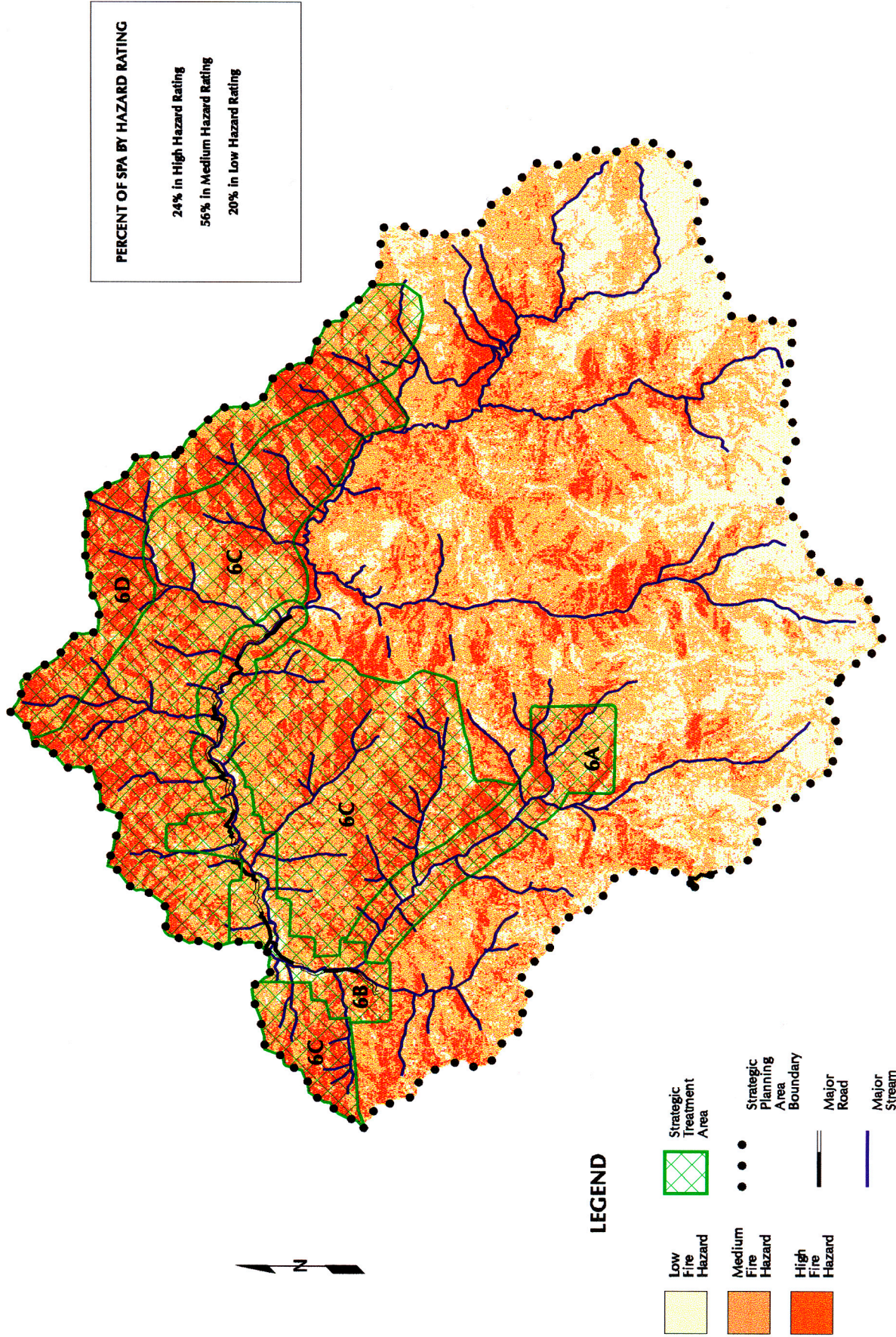


# Fire Hazard Ratings and Strategic Treatment Areas Upper Little Applegate/Yale SPA (6)



## LEGEND

- Low Fire Hazard
- Medium Fire Hazard
- High Fire Hazard
- Strategic Treatment Area
- Strategic Planning Area Boundary
- Major Road
- Major Stream

**UPPER LITTLE APPELEGATE  
STRATEGIC PLANNING AREA #6**

**Recommendations for Fuel Reduction Work**

**6. Upper Little Applegate**

- a. Recommendation: Increase the scope and complete fuel reduction projects in the Yale Creek/Dog Fork neighborhood. Reduce fuels along Yale Creek Road for an escape route.
- b. Little Applegate Road: Recommendation: Construct buffers along roads on federally-managed land -300 feet wherever possible.
- c. Recommendation: Complete planning and implement of fuel reduction portions of BLM's Prince Castor, Bald Lick, and Bobar projects.
- d. North/East borders: Recommendation: Include fuel reduction work here in future BLM project planning.

**< #1 PRIORITY FOR ALL SPAs WITH CARs:  
TO DO WORK AROUND HOMES >**

**GLOSSARY:**

***SPA: Strategic Planning Area***

***CAR: Communities-at-Risk***

***LSR: Late Seral Reserve***

***T & E: Threatened & Endangered (species)***

***WUI: Wildland-Urban Interface***