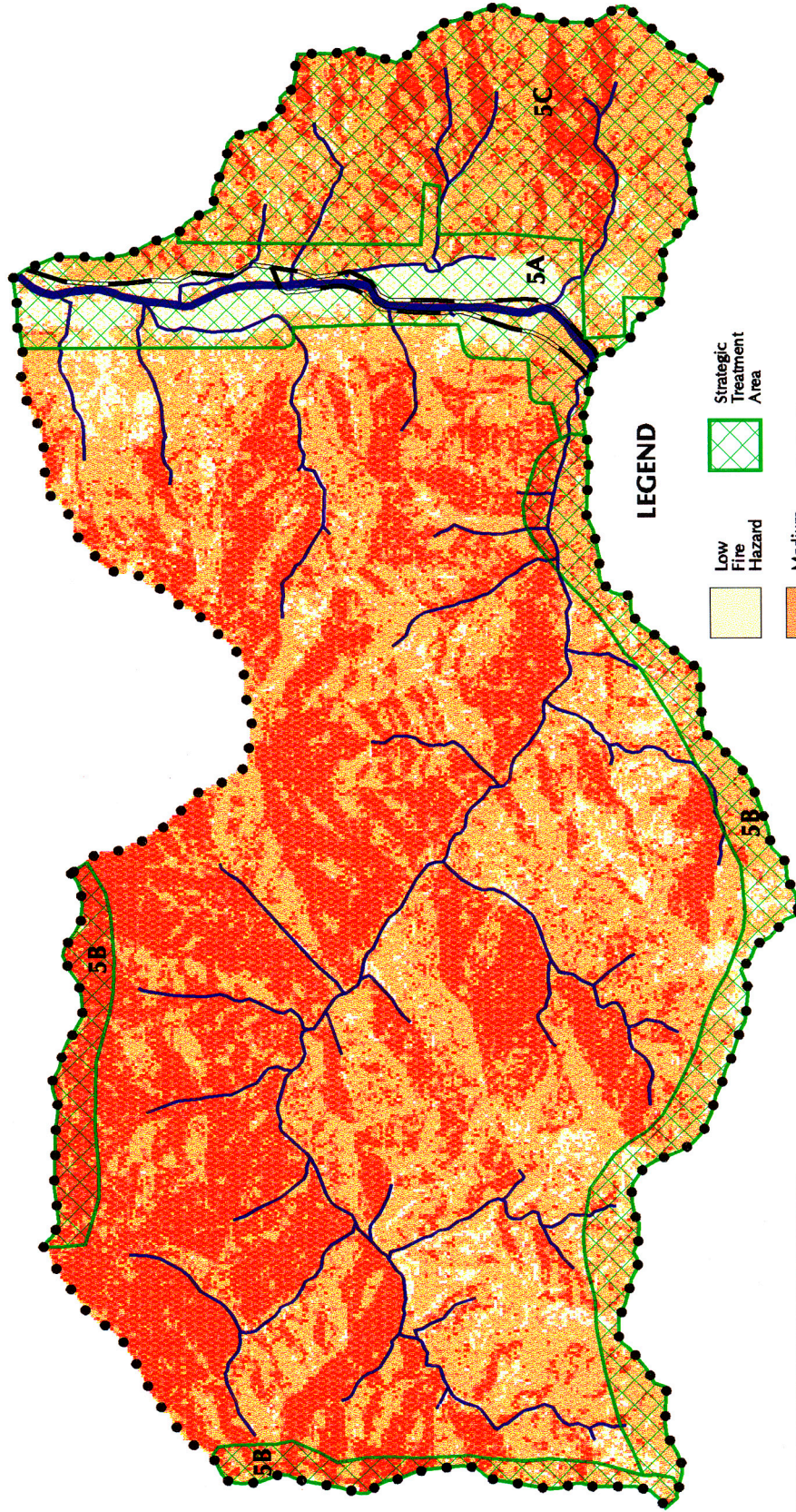


# Fire Hazard Ratings and Strategic Treatment Areas Star SPA (5)

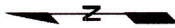


## LEGEND

- Low Fire Hazard
- Medium Fire Hazard
- High Fire Hazard
- Strategic Treatment Area
- Strategic Planning Area Boundary
- Major Road
- Major Stream
- Applegate River

**PERCENT OF SPA BY HAZARD RATING**

40% in High Hazard Rating
50% in Medium Hazard Rating
10% in Low Hazard Rating



**STAR**  
**STRATEGIC PLANNING AREA #5**

**Recommendations for Fuel Reduction Work**

**5. Star**

- a. Recommendation: Assess agency lands along Upper Applegate Road for possible complementary fuel reduction work to that on private lands.
- b. Humpy/9-mile/Thompson Creek (SPA): Recommendation: Continue fuel break south and west along ridges to protect Thompson Creek (planned, T&E area); also continue ridge break east (Star/Chapman/Keeler).
- c. Recommendation: Complete & implement fuel reduction portions of BLM's Bobar project.

**< #1 PRIORITY FOR ALL SPAs WITH CARs:  
TO DO WORK AROUND HOMES >**

**GLOSSARY:**

***SPA: Strategic Planning Area***

***CAR: Communities-at-Risk***

***LSR: Late Seral Reserve***

***T & E: Threatened & Endangered (species)***

***WUI: Wildland-Urban Interface***