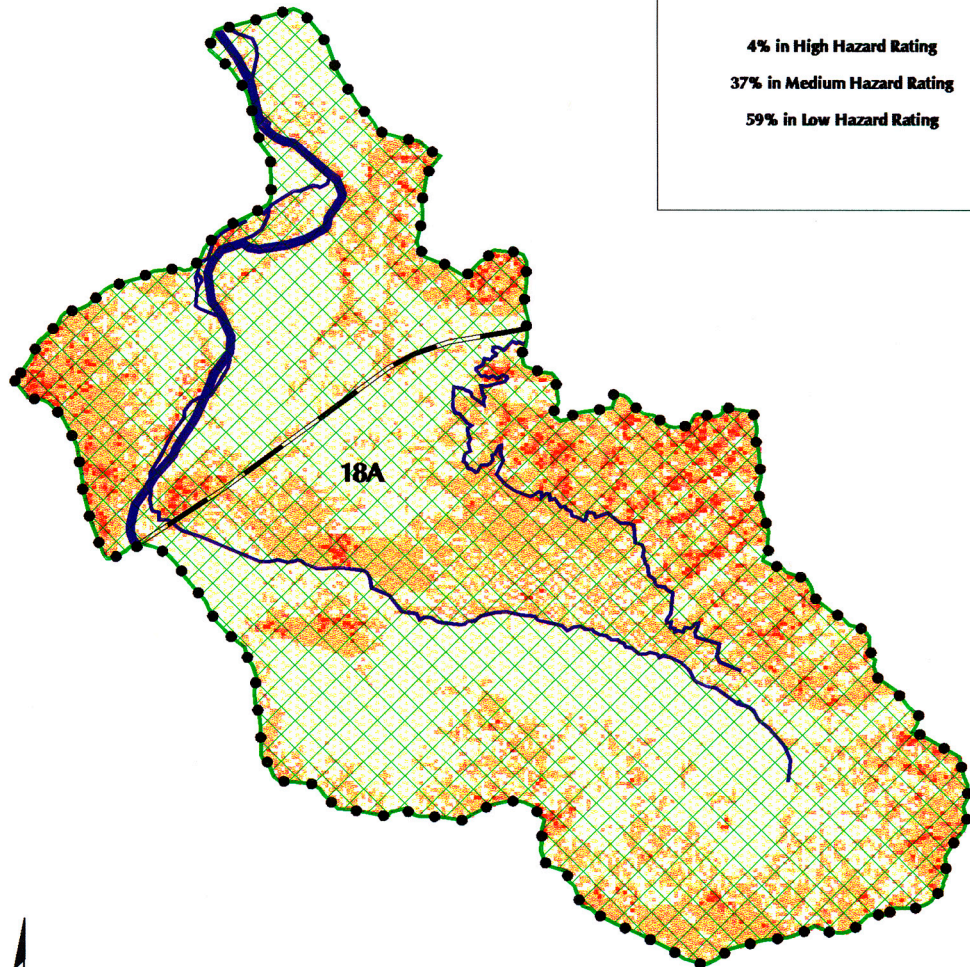




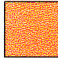

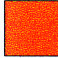



# Fire Hazard Ratings and Strategic Treatment Areas Lower Applegate SPA (18)

## PERCENT OF SPA BY HAZARD RATING

4% in High Hazard Rating  
37% in Medium Hazard Rating  
59% in Low Hazard Rating



## LEGEND

- |  |  |
|--|--|
|  Low Fire Hazard    |  Strategic Treatment Area         |
|  Medium Fire Hazard |  Strategic Planning Area Boundary |
|  High Fire Hazard   |  Major Road                       |
|  |  Major Stream                     |
|  |  Applegate River                  |

**LOWER APPELEGATE  
STRATEGIC PLANNING AREA #18**

**Recommendations for Fuel Reduction Work**

**18. Lower Applegate**

- a. Recommendation for all CARs: Do fuel reduction work around homes and on private property, due to density and fire start history.

**< #1 PRIORITY FOR ALL SPAs WITH CARs:  
TO DO WORK AROUND HOMES >**

**GLOSSARY:**

***SPA: Strategic Planning Area***

***CAR: Communities-at-Risk***

***LSR: Late Seral Reserve***

***T & E: Threatened & Endangered (species)***

***WUI: Wildland-Urban Interface***