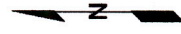
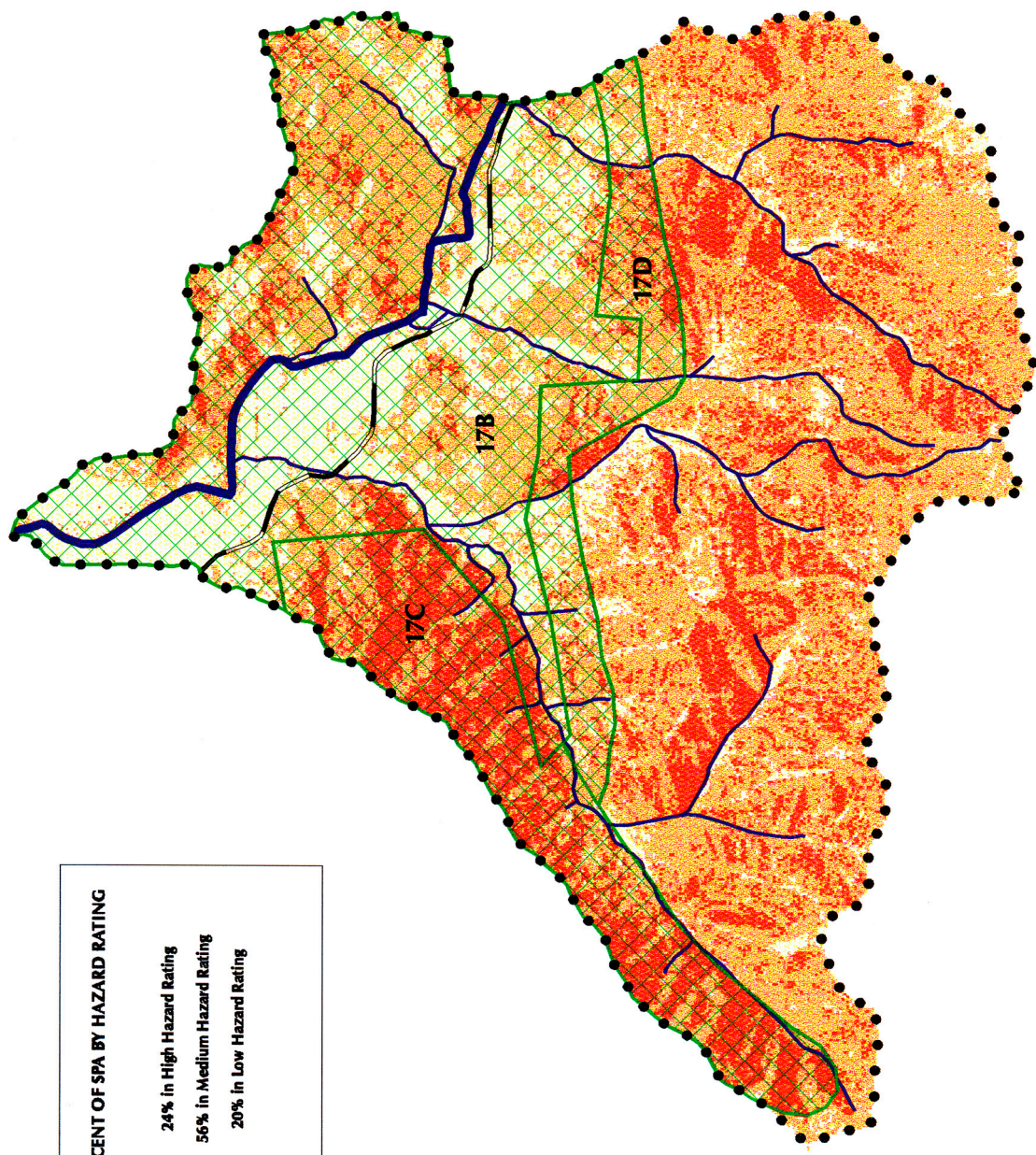






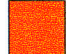



Fire Hazard Ratings and Strategic Treatment Areas Cheney SPA (17)

PERCENT OF SPA BY HAZARD RATING

- 24% in High Hazard Rating
- 56% in Medium Hazard Rating
- 20% in Low Hazard Rating



LEGEND

- | | |
|--------------------------------------------------------------------------------------------------------|----------------------------------------------------------------------------------------------------------------------|
|  Low Fire Hazard |  Strategic Treatment Area |
|  Medium Fire Hazard |  Strategic Planning Area Boundary |
|  High Fire Hazard |  Major Road |
| |  Major Stream |
| |  Applegate River |

**CHENEY CREEK
STRATEGIC PLANNING AREA #17**

Recommendations for Fuel Reduction Work

17. Cheney Creek

- a. Identified as probable owl corridor. Recommendation: Watch canopy closure, maintain at greater than 40%.
- b. CARs, especially at the base of Cheney Creek and off Fish Hatchery Road. Recommendation: do fuel reduction work around homes.
- c. Recommendation: Create a buffer on NW edge of CAR near ridge between Cheney and Slate SPAs.
- d. Recommendation: Create a fuel break on the south border of the CAR to protect LSRs.

**< #1 PRIORITY FOR ALL SPAs WITH CARs:
TO DO WORK AROUND HOMES >**

GLOSSARY:

SPA: Strategic Planning Area

CAR: Communities-at-Risk

LSR: Late Seral Reserve

T & E: Threatened & Endangered (species)

WUI: Wildland-Urban Interface