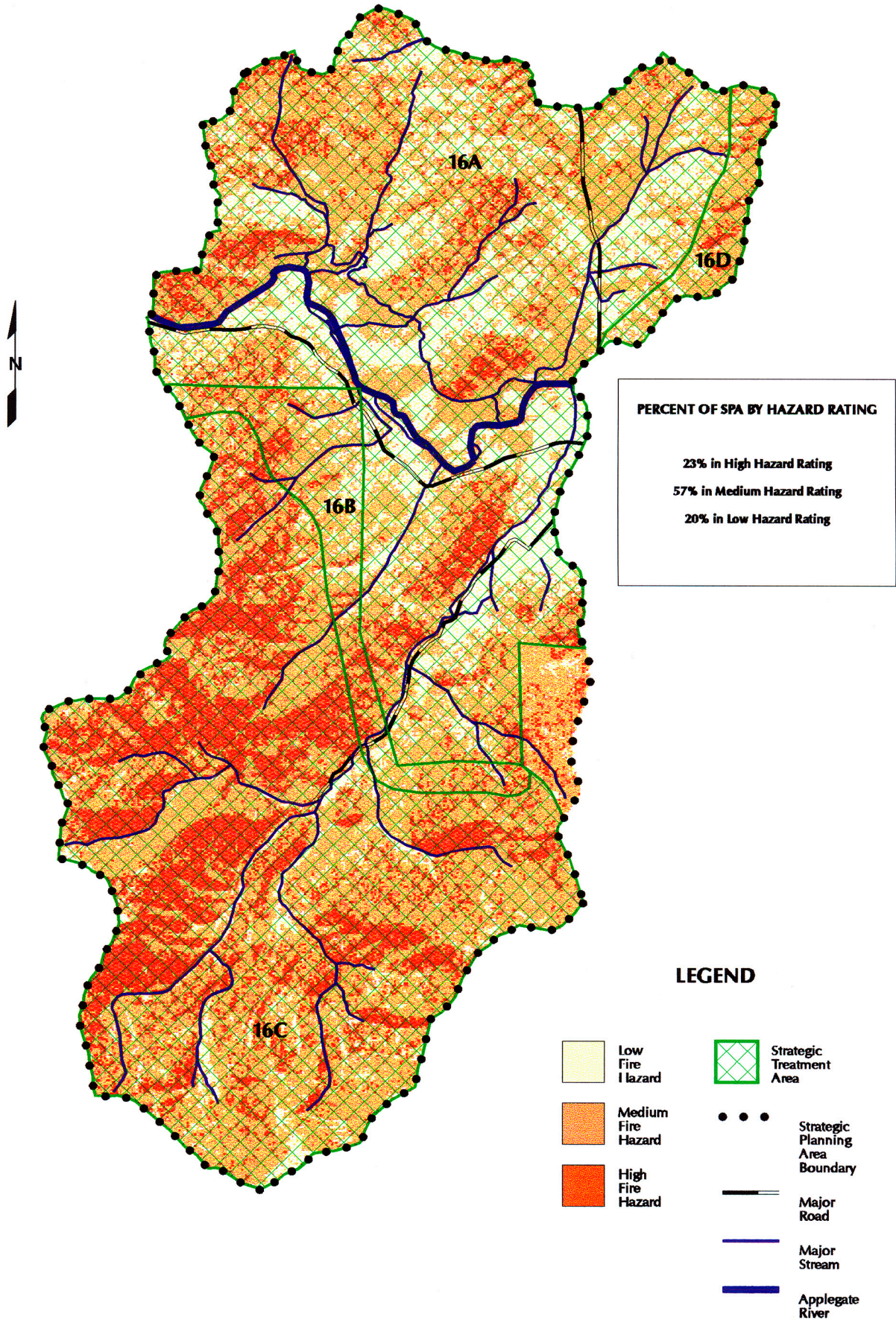


Fire Hazard Ratings and Strategic Treatment Areas Murphy Creek SPA (16)



**MURPHY CREEK
STRATEGIC PLANNING AREA #16**

Recommendations for Fuel Reduction Work

16. Murphy Creek

- a. All CARs: do fuel reduction work around homes and on private property.
- b. Up Murphy Creek Road, along the south border of the CAR is high hazard and risk (high school located here). Recommendation: Buffer the LSRs with a special fuel reduction project in conjunction w/ Hidden Valley high school students.
- c. LSRs: Recommendation: Remove ladder fuels in strategic places near CARs, possibly as a special demo project? (Make sure to address species habitat.)
- d. Ridge between Murphy & Murphy Creek is a strategic point but is private land. Recommendation: Treat fuels under power lines, at a minimum.

**< #1 PRIORITY FOR ALL SPAs WITH CARs:
TO DO WORK AROUND HOMES >**

GLOSSARY:

SPA: Strategic Planning Area

CAR: Communities-at-Risk

LSR: Late Seral Reserve

T & E: Threatened & Endangered (species)

WUI: Wildland-Urban Interface