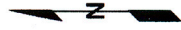
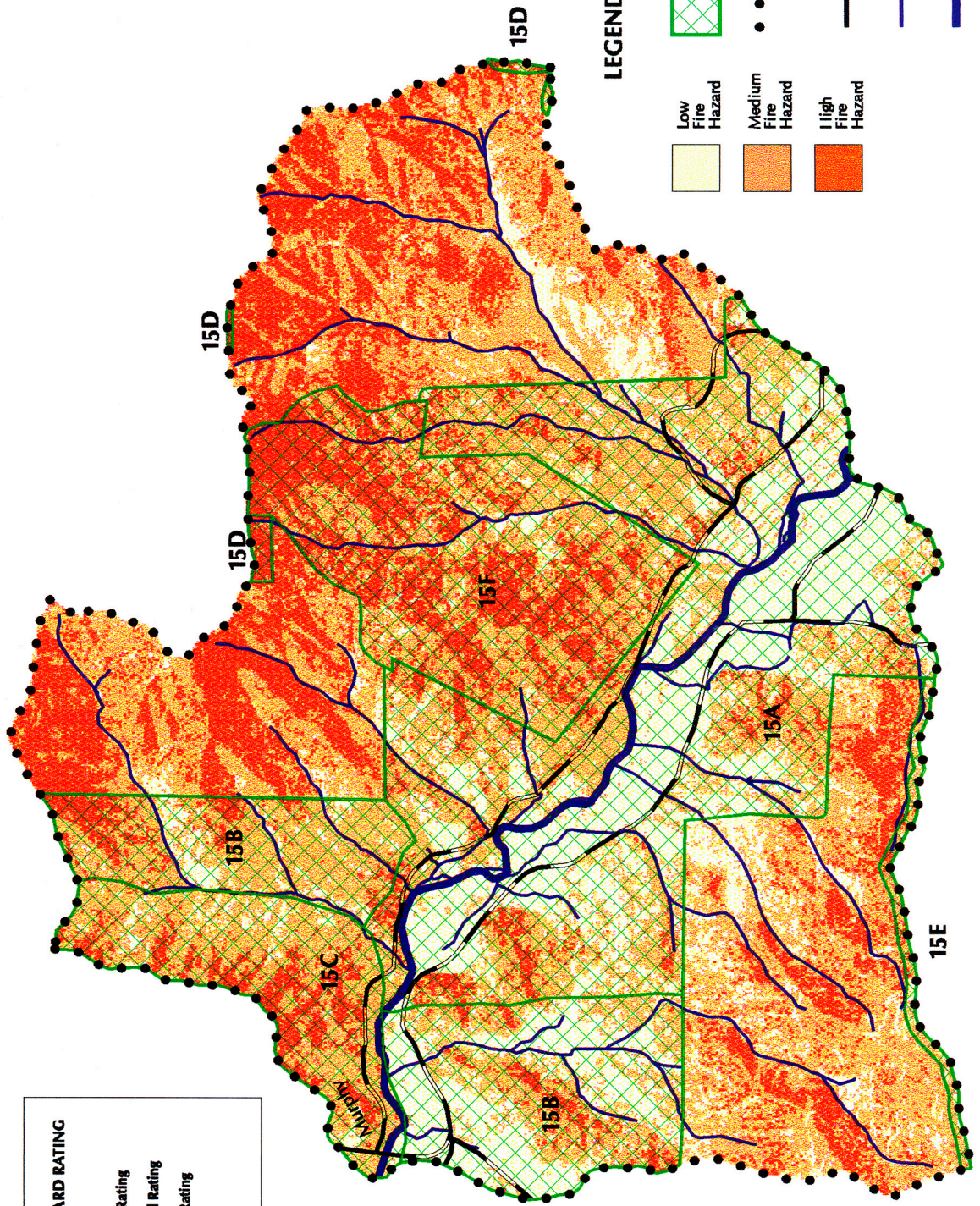




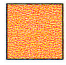

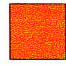



Fire Hazard Ratings and Strategic Treatment Areas Murphy SPA (15)

PERCENT OF SPA BY HAZARD RATING

- 25% in High Hazard Rating
- 51% in Medium Hazard Rating
- 24% in Low Hazard Rating



LEGEND

- | | | | |
|---|--------------------|---|----------------------------------|
|  | Low Fire Hazard |  | Strategic Treatment Area |
|  | Medium Fire Hazard |  | Strategic Planning Area Boundary |
|  | High Fire Hazard |  | Major Road |
| | |  | Major Stream |
| | |  | Applegate River |

**MURPHY
STRATEGIC PLANNING AREA #15**

Recommendations for Fuel Reduction Work

15. Murphy

- a. All CARs: do fuel reduction work around homes and on private property.
- b. Board Shanty & Grays Creek Roads are high risk due to dead-end roadways. Recommendation: Do fuel reduction work along roads and around homes.
- c. Ridge between Murphy & Murphy Creek is a strategic point but is private land. Recommendation: Treat fuels under power lines, at a minimum.
- d. Recommendation: Complete the fuel break between the Murphy SPA & the Savage Creek drainage wherever possible.
- e. Ridge between Murphy and Lower Williams is a strategic point for fuel break, but it is an LSR. Recommendation: Protect with fuel reduction work.
- f. Recommendation: Complete BLM's North Murphy project.

**< #1 PRIORITY FOR ALL SPAs WITH CARs:
TO DO WORK AROUND HOMES >**

GLOSSARY:

SPA: Strategic Planning Area

CAR: Communities-at-Risk

LSR: Late Seral Reserve

T & E: Threatened & Endangered (species)

WUI: Wildland-Urban Interface