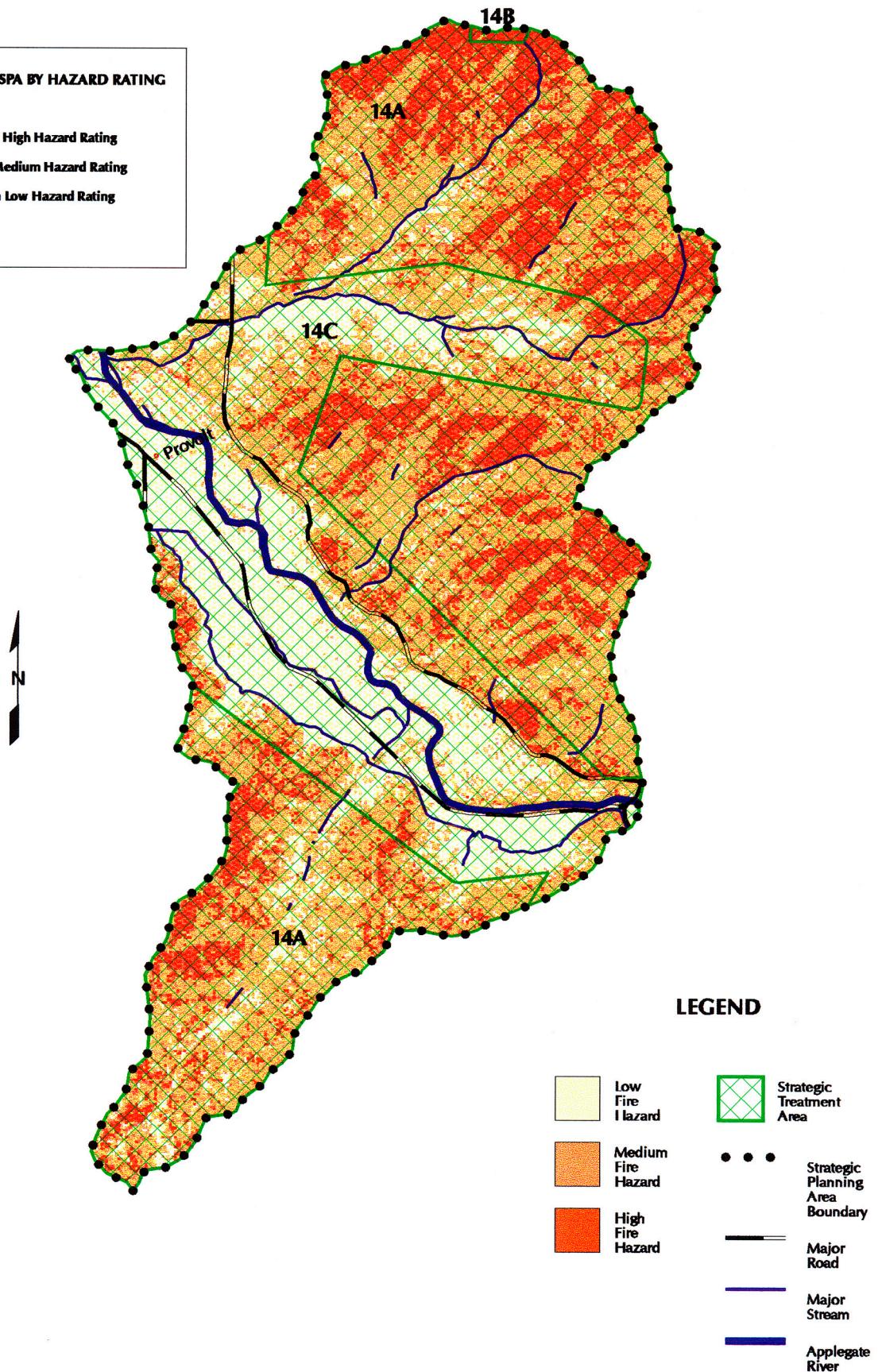


Fire Hazard Ratings and Strategic Treatment Areas Slagle SPA (14)

PERCENT OF SPA BY HAZARD RATING

24% in High Hazard Rating
 50% in Medium Hazard Rating
 26% in Low Hazard Rating



**SLAGLE CREEK
STRATEGIC PLANNING AREA #14**

Recommendations for Fuel Reduction Work

14. Slagle Creek

- a. Recommendation: Complete the fuel reduction portion of BLM's Ferris Bugman project, collaborating with adjacent private landowners on fuel reduction work whenever possible.
- b. Recommendation: Close fuel break between Slagle Creek SPA & Savage Creek drainage wherever possible.
- c. CARs: Recommendation: do fuel reduction work along roads and around homes because of numerous dead-end roads.

**< #1 PRIORITY FOR ALL SPAs WITH CARs:
TO DO WORK AROUND HOMES >**

GLOSSARY:

SPA: Strategic Planning Area

CAR: Communities-at-Risk

LSR: Late Seral Reserve

T & E: Threatened & Endangered (species)

WUI: Wildland-Urban Interface