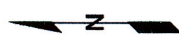
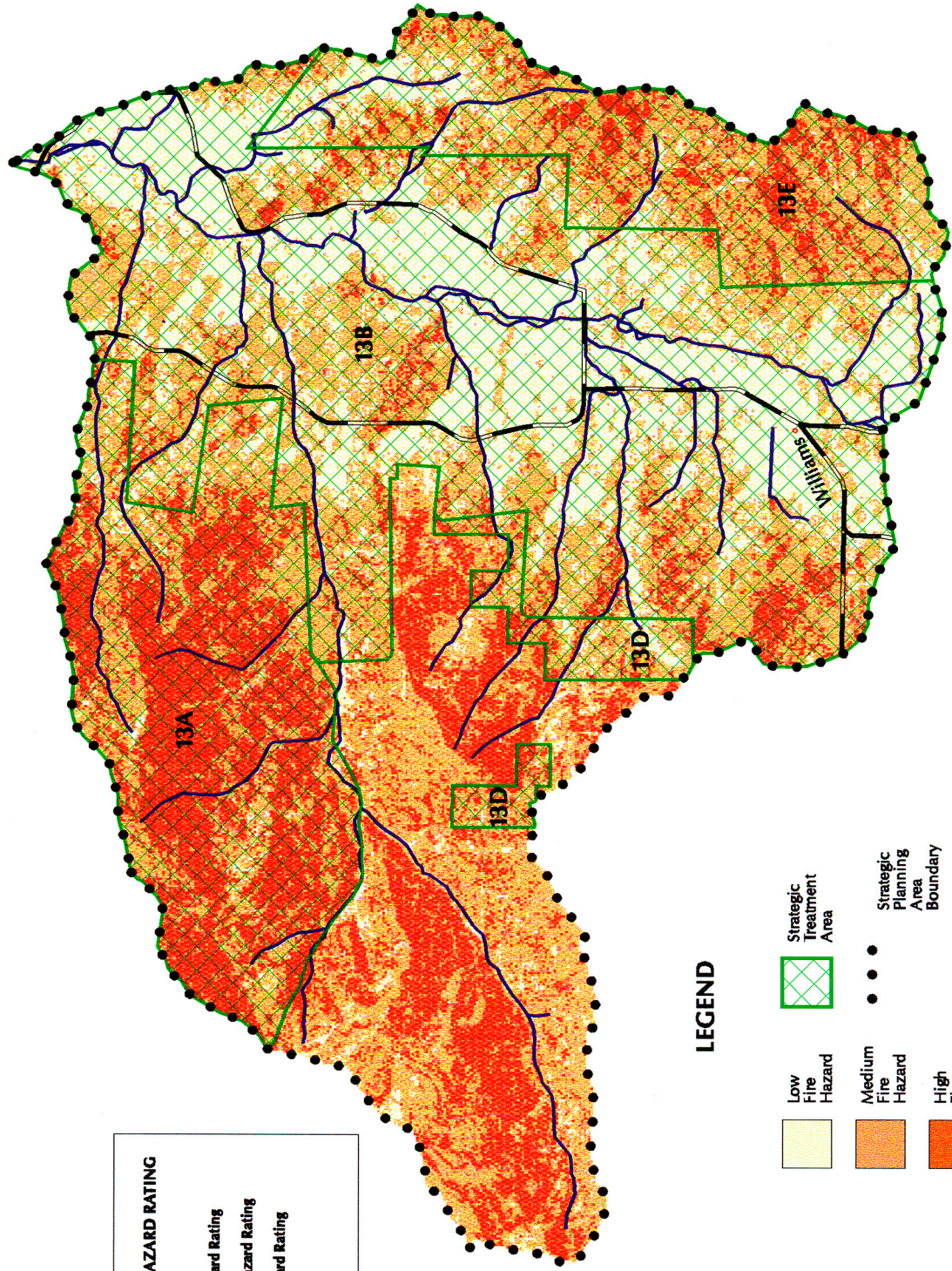




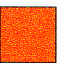




Fire Hazard Ratings and Strategic Treatment Areas Lower Williams SPA (13)



PERCENT OF SPA BY HAZARD RATING

26% in High Hazard Rating
 47% in Medium Hazard Rating
 27% in Low Hazard Rating

LEGEND

-  Low Fire Hazard
-  Medium Fire Hazard
-  High Fire Hazard
-  Strategic Treatment Area
-  Strategic Planning Area Boundary
-  Major Road
-  Major Stream

**LOWER WILLIAMS
STRATEGIC PLANNING AREA #13**

Recommendations for Fuel Reduction Work

13. Lower Williams

- a. Ridge between Murphy and Lower Williams. Recommendation: Recognize as a strategic point for fuel break, but protect as an LSR.
- b. CARs are high risk. Recommendation: Buffer up to 300 feet on federally managed lands next to the LSRs.
- c. Port-Orford Cedar root disease: Address mitigation work in all projects in this area.
- d. Recommendation: Complete any ladder fuel work on private industry lands in the west corners of this SPA near the LSRs to reduce risk to LSRs.
- e. Recommendation: Complete the fuel reduction portion of BLM's Scattered Apples project, incorporating collaborative work on adjacent private lands.

**< #1 PRIORITY FOR ALL SPAs WITH CARs:
TO DO WORK AROUND HOMES >**

GLOSSARY:

SPA: Strategic Planning Area

CAR: Communities-at-Risk

LSR: Late Seral Reserve

T & E: Threatened & Endangered (species)

WUI: Wildland-Urban Interface