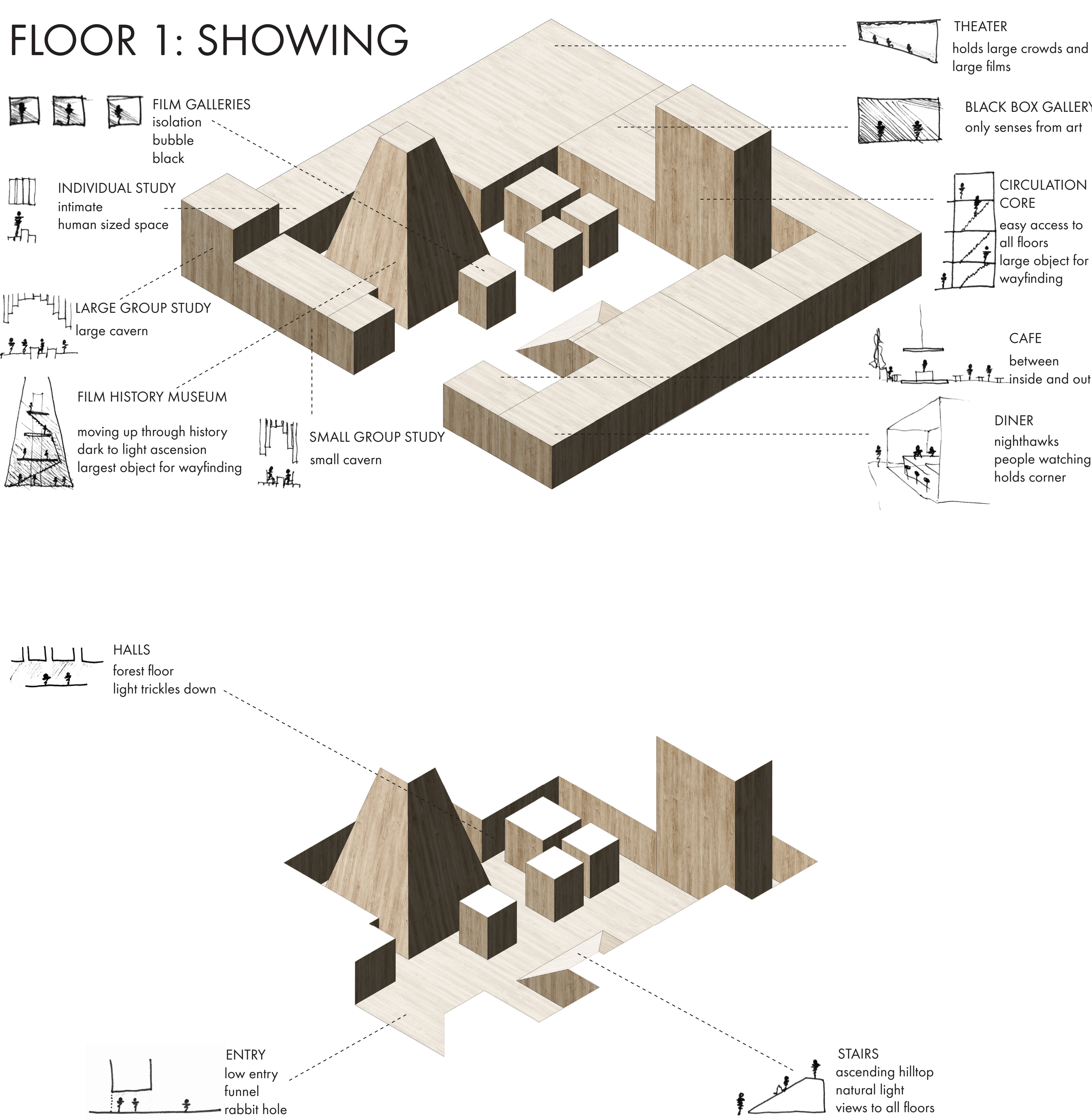
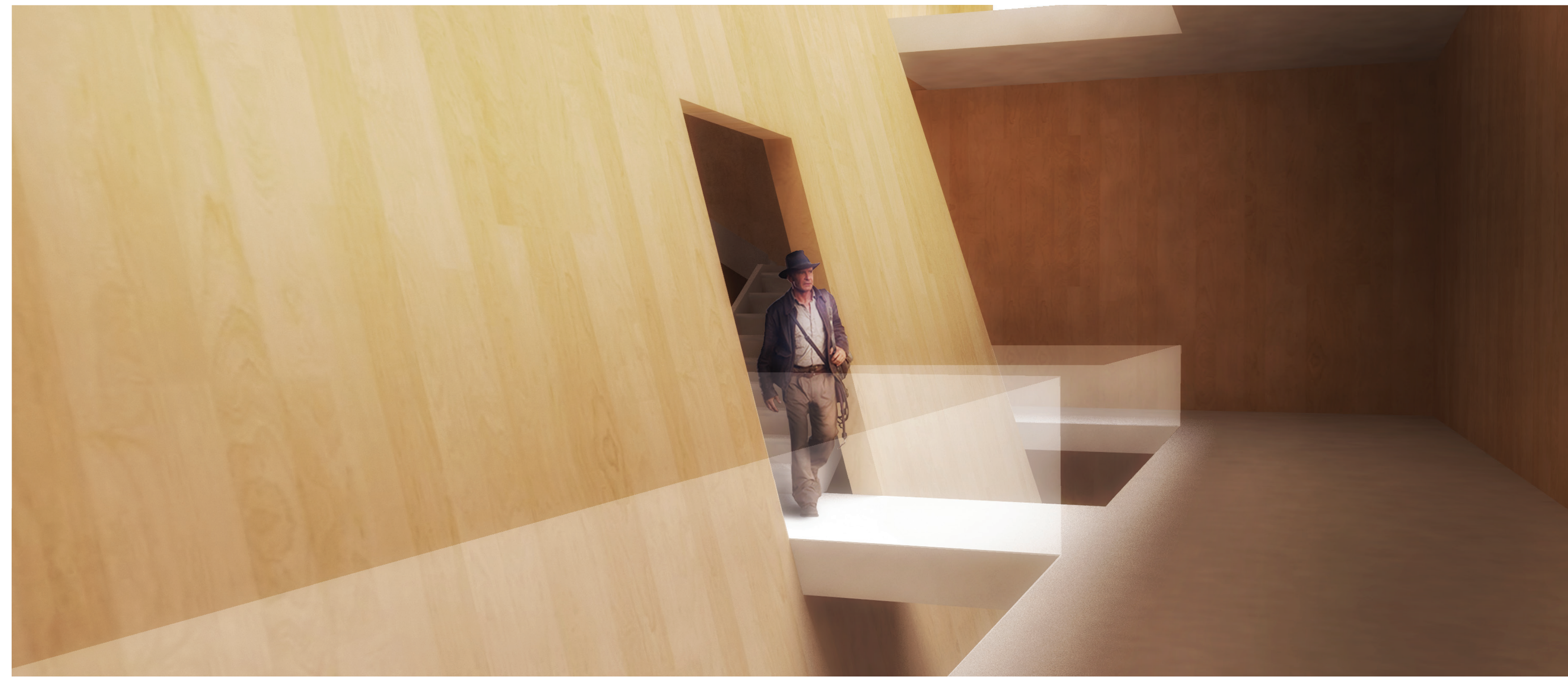
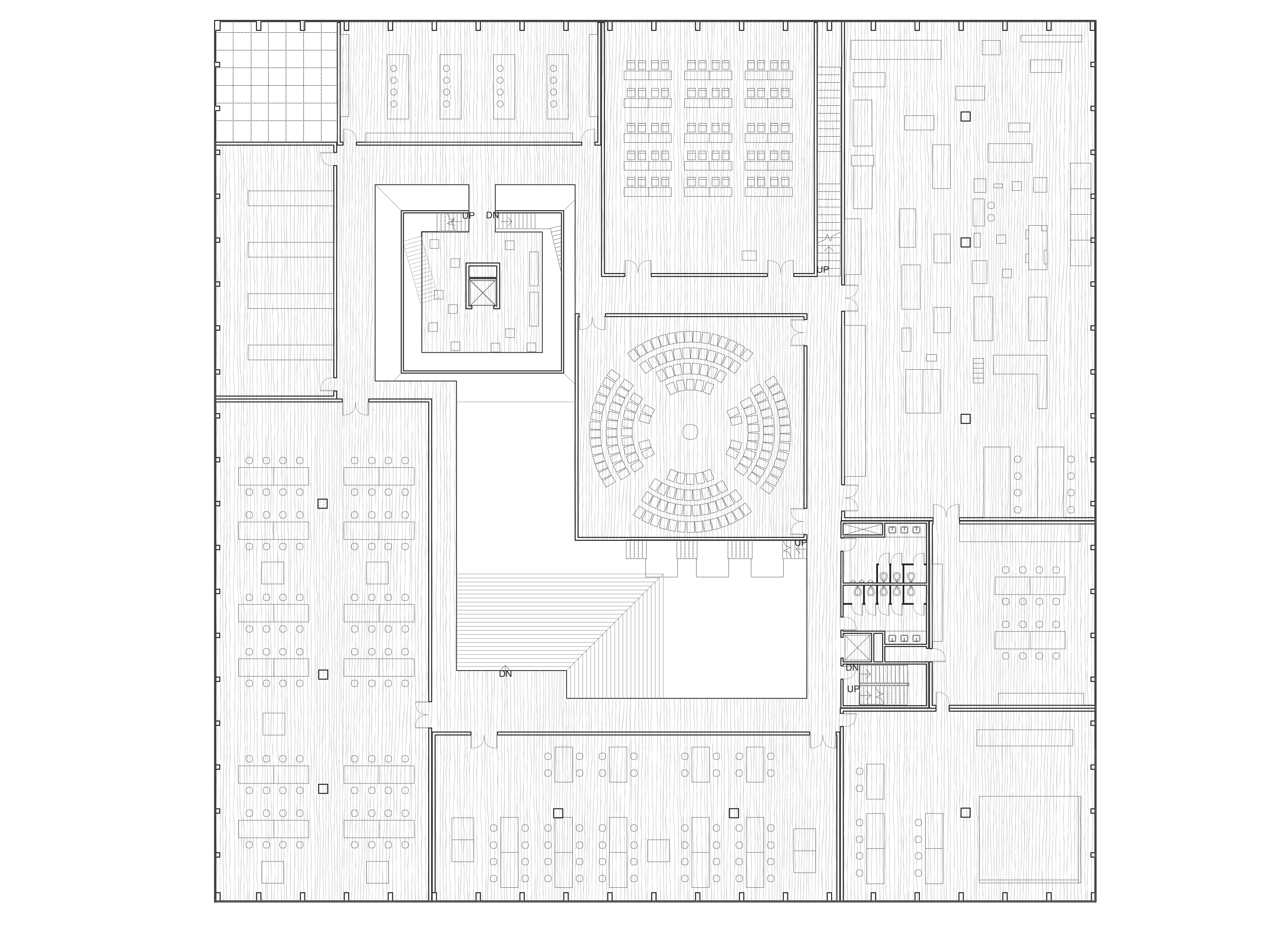
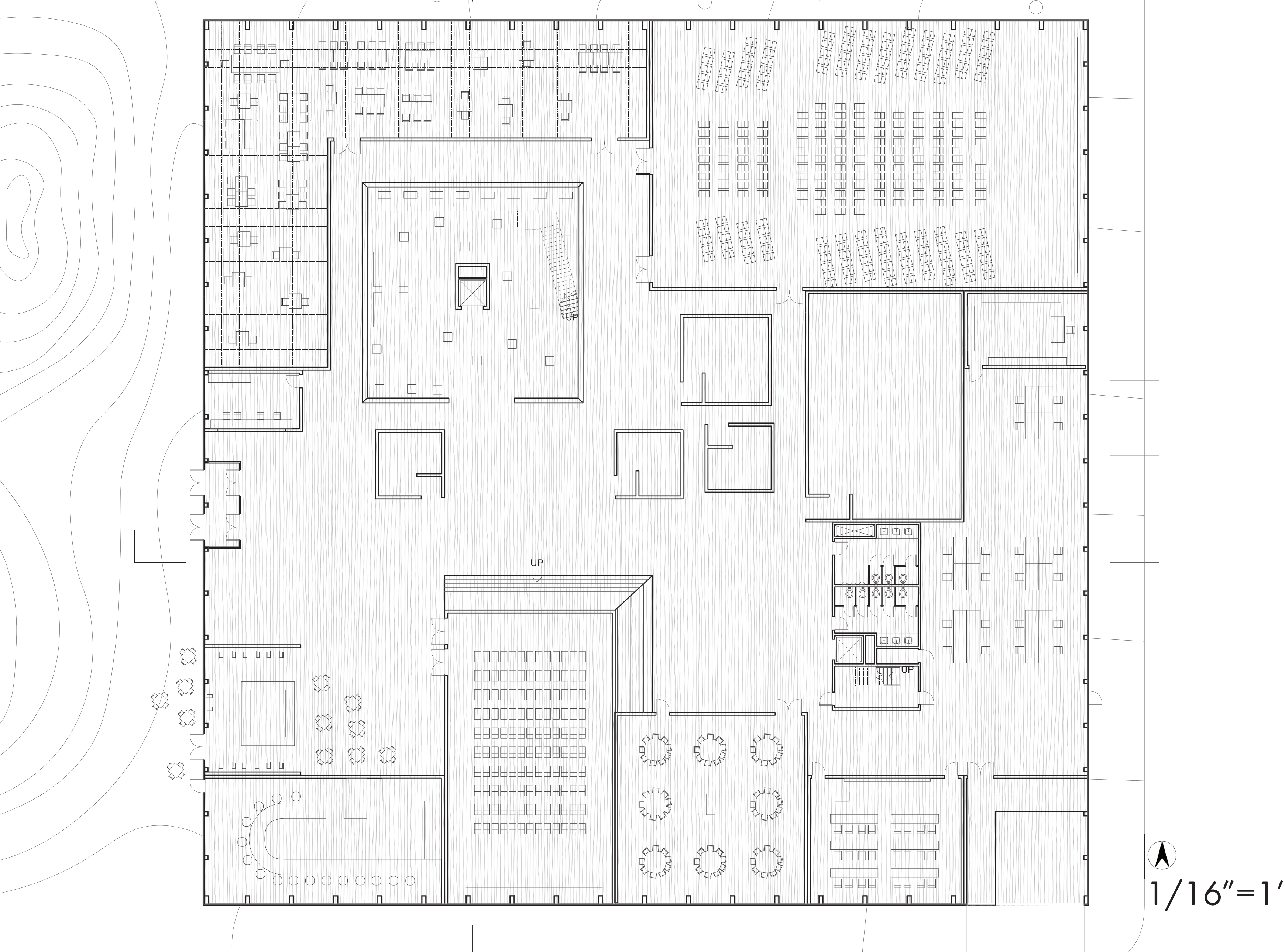
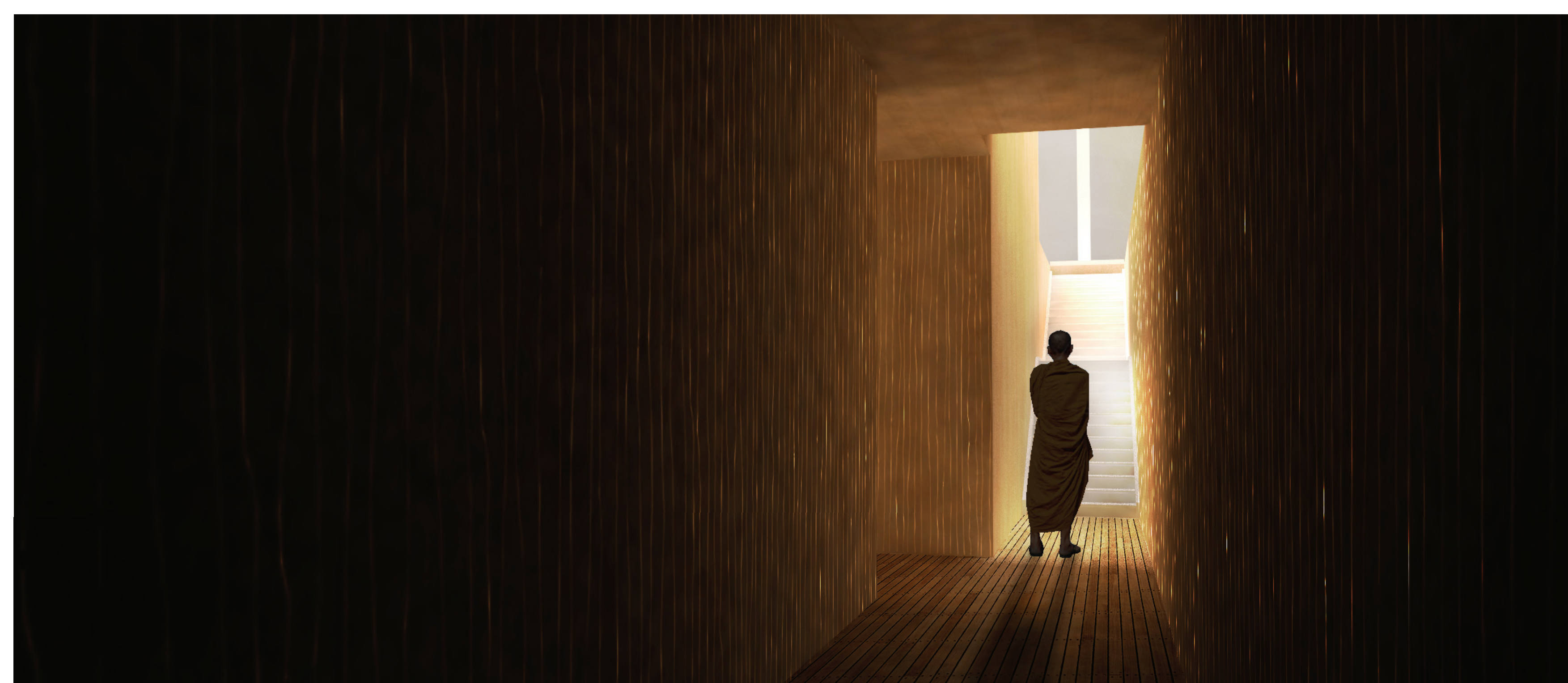
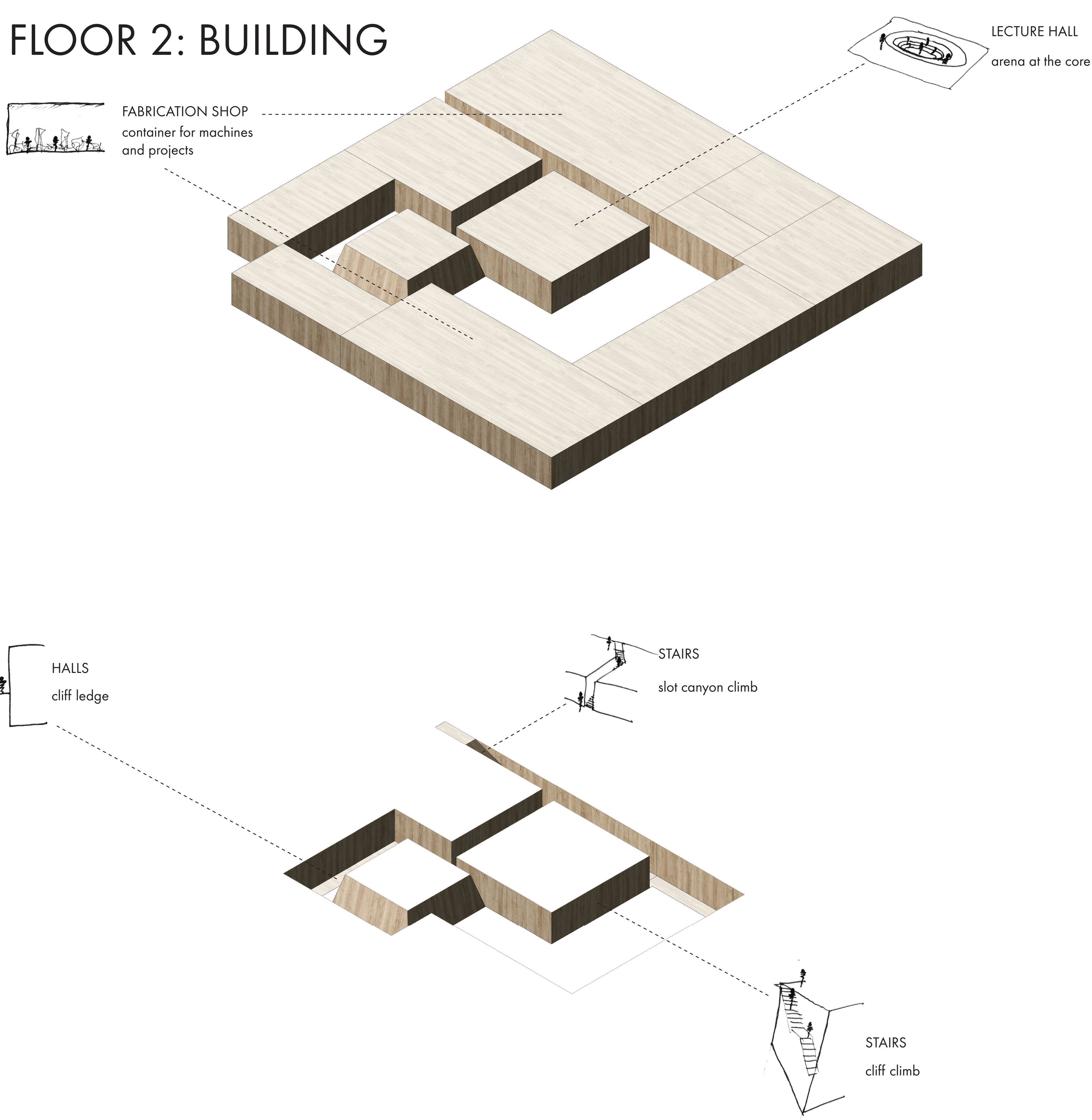


FLOOR 1: SHOWING

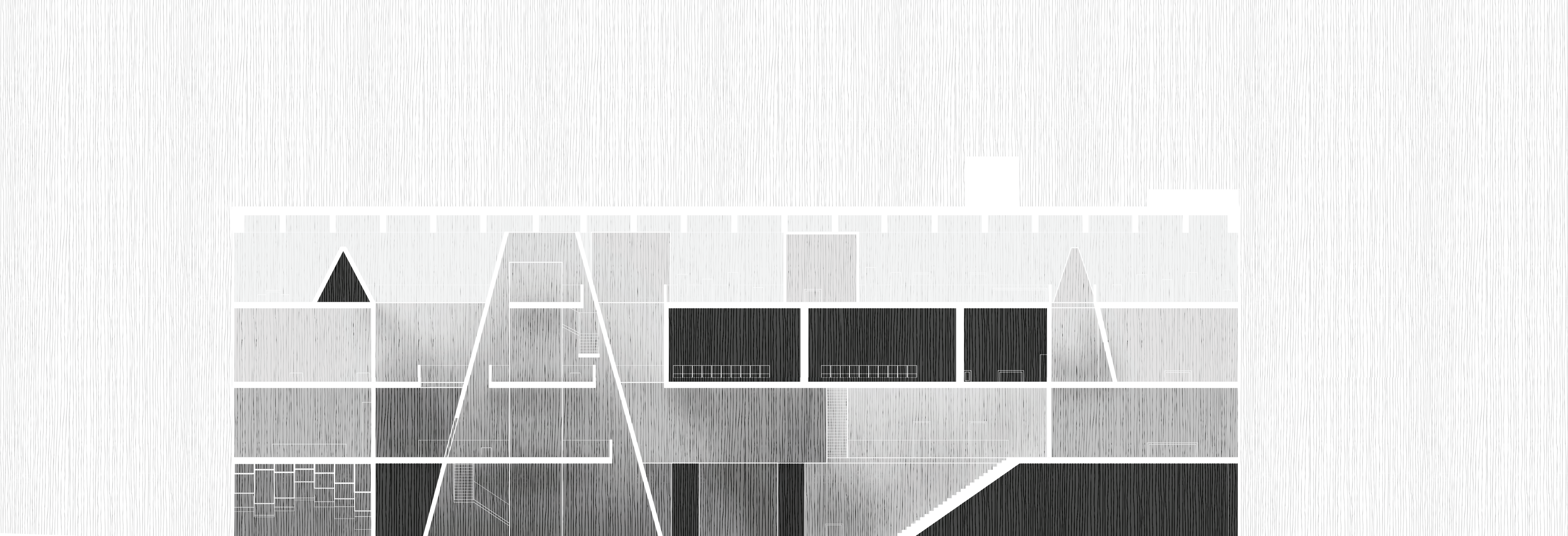


FLOOR 2: BUILDING

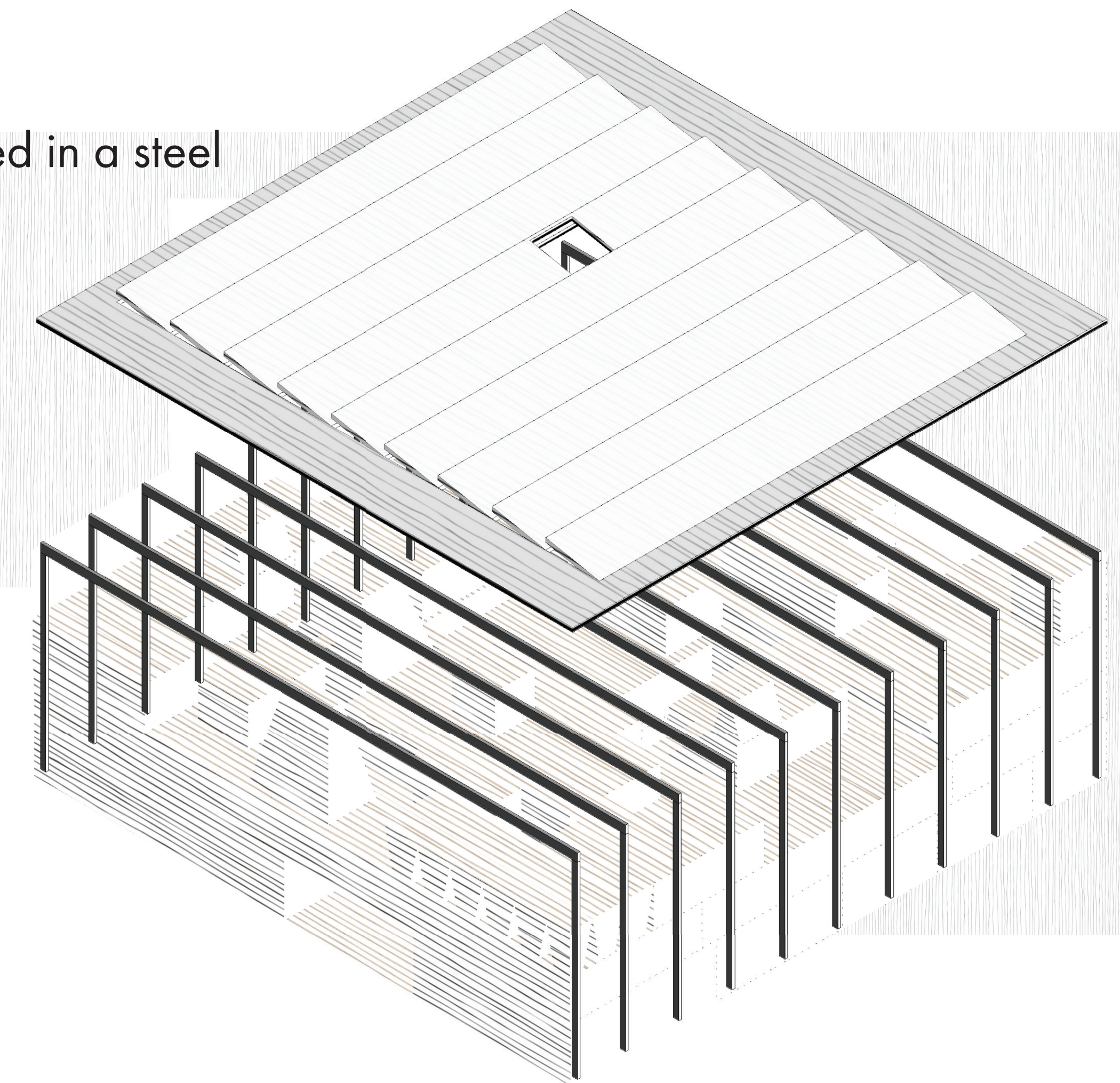


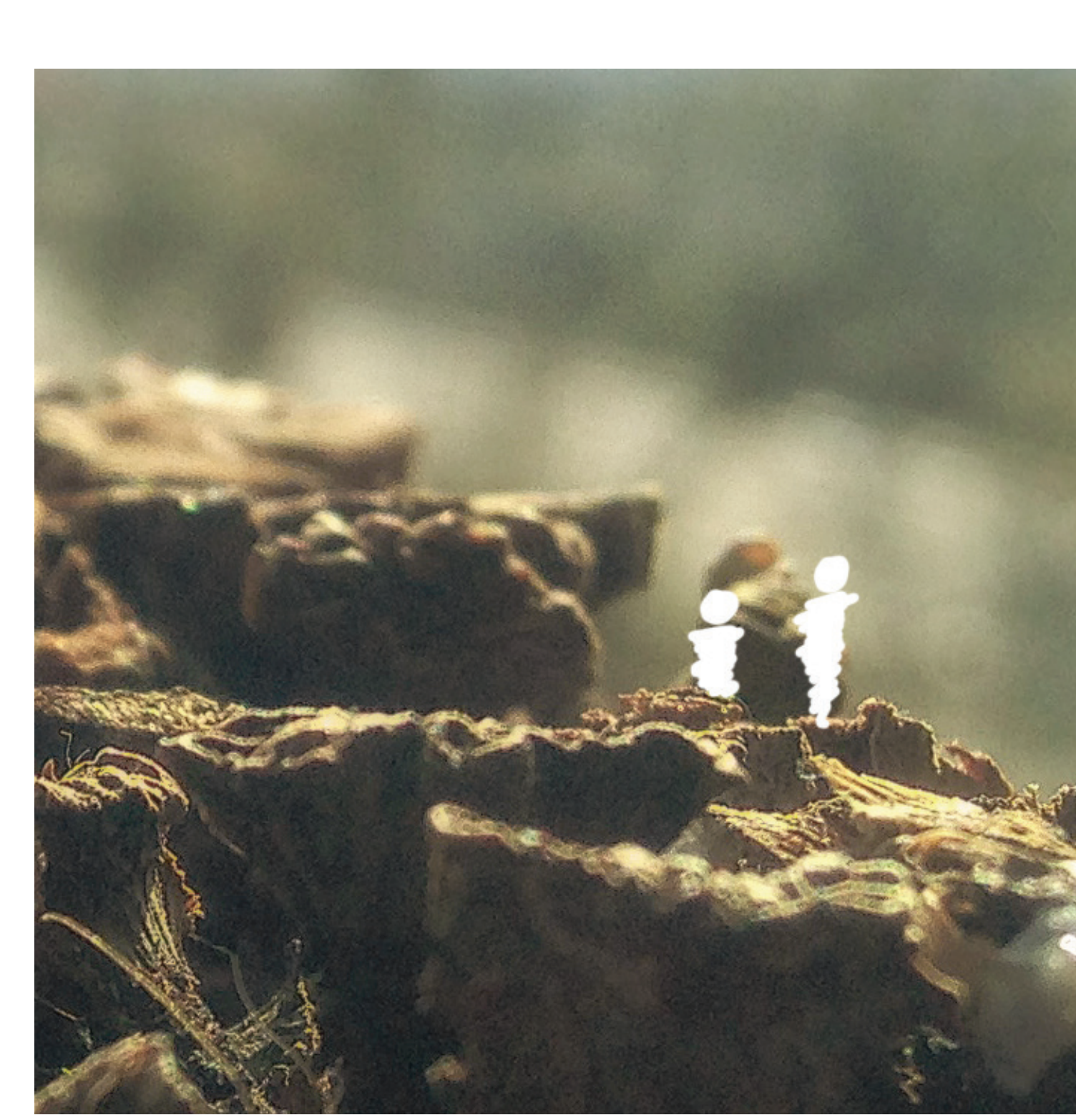
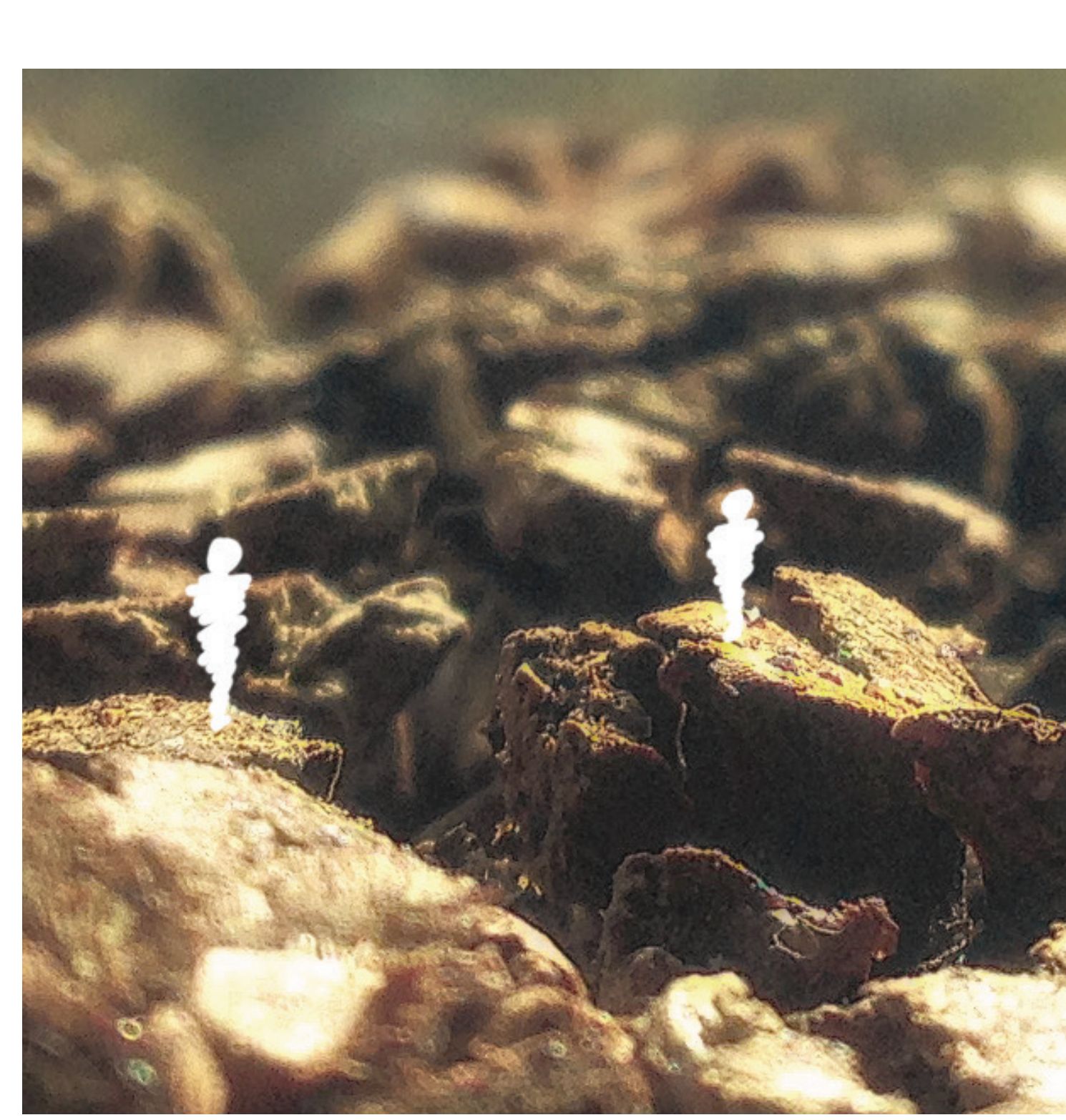
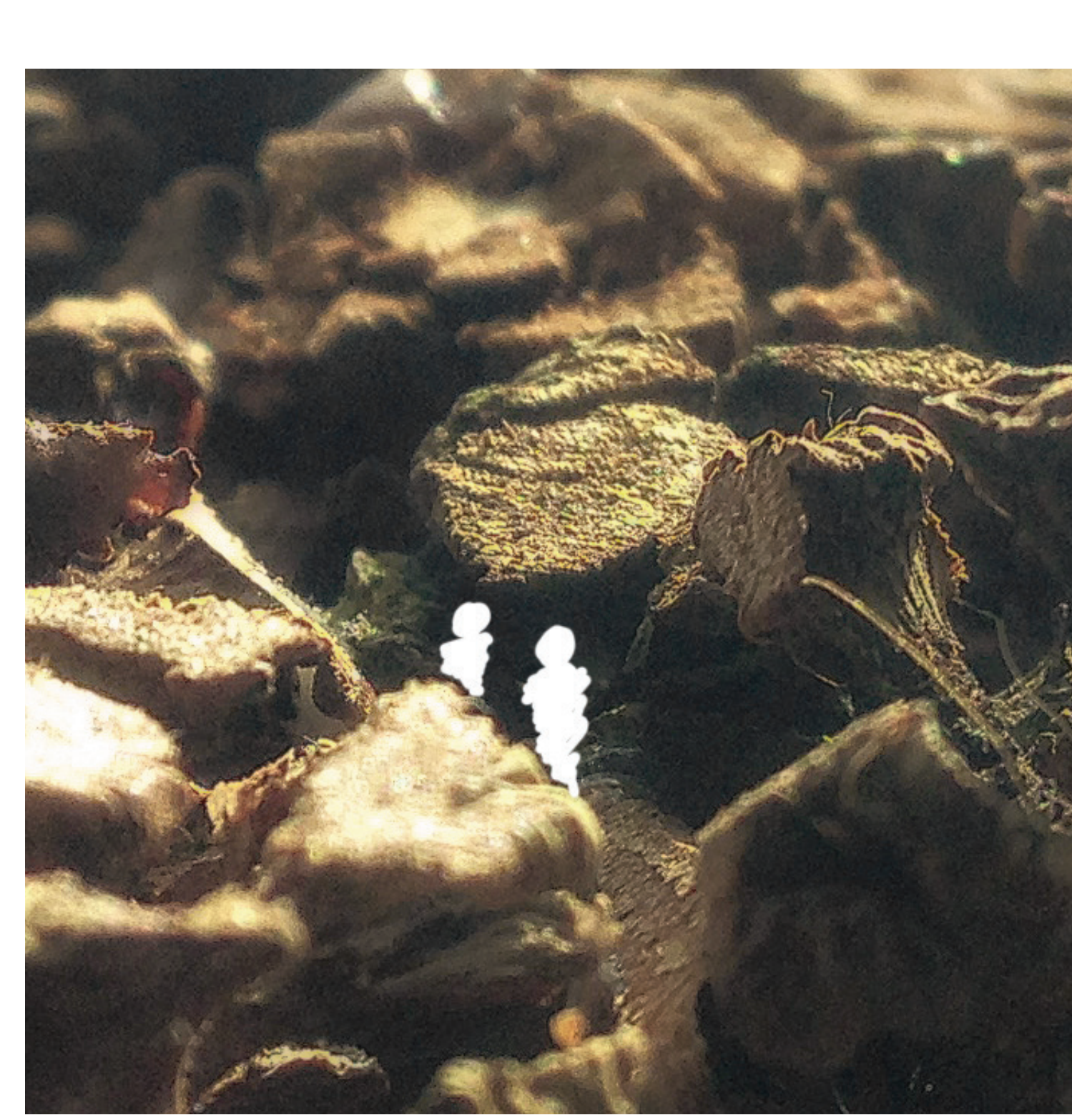
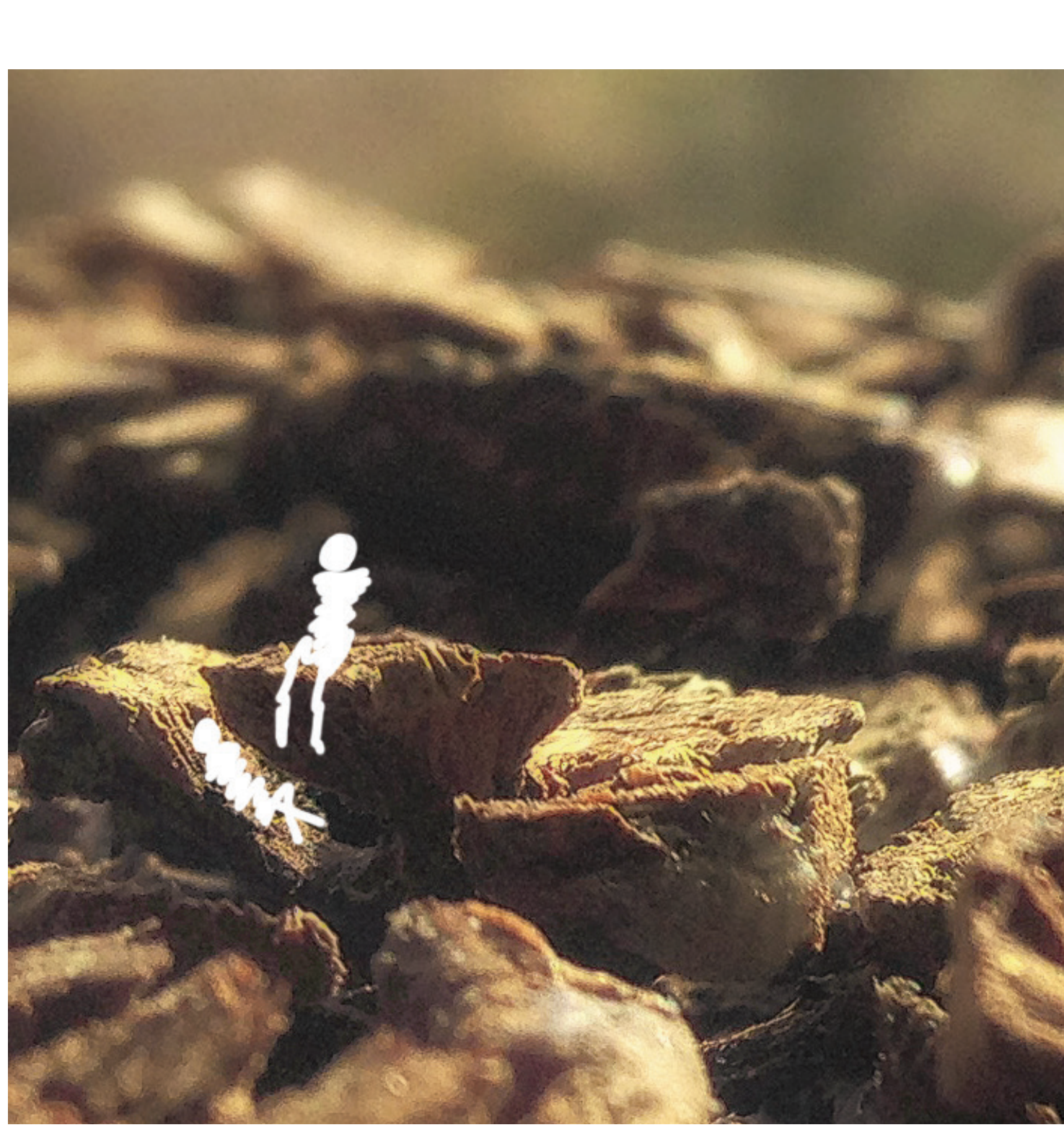
NORTH SOUTH SECTION 1/16"=1'

Experiences requiring less light are placed towards the center of the building

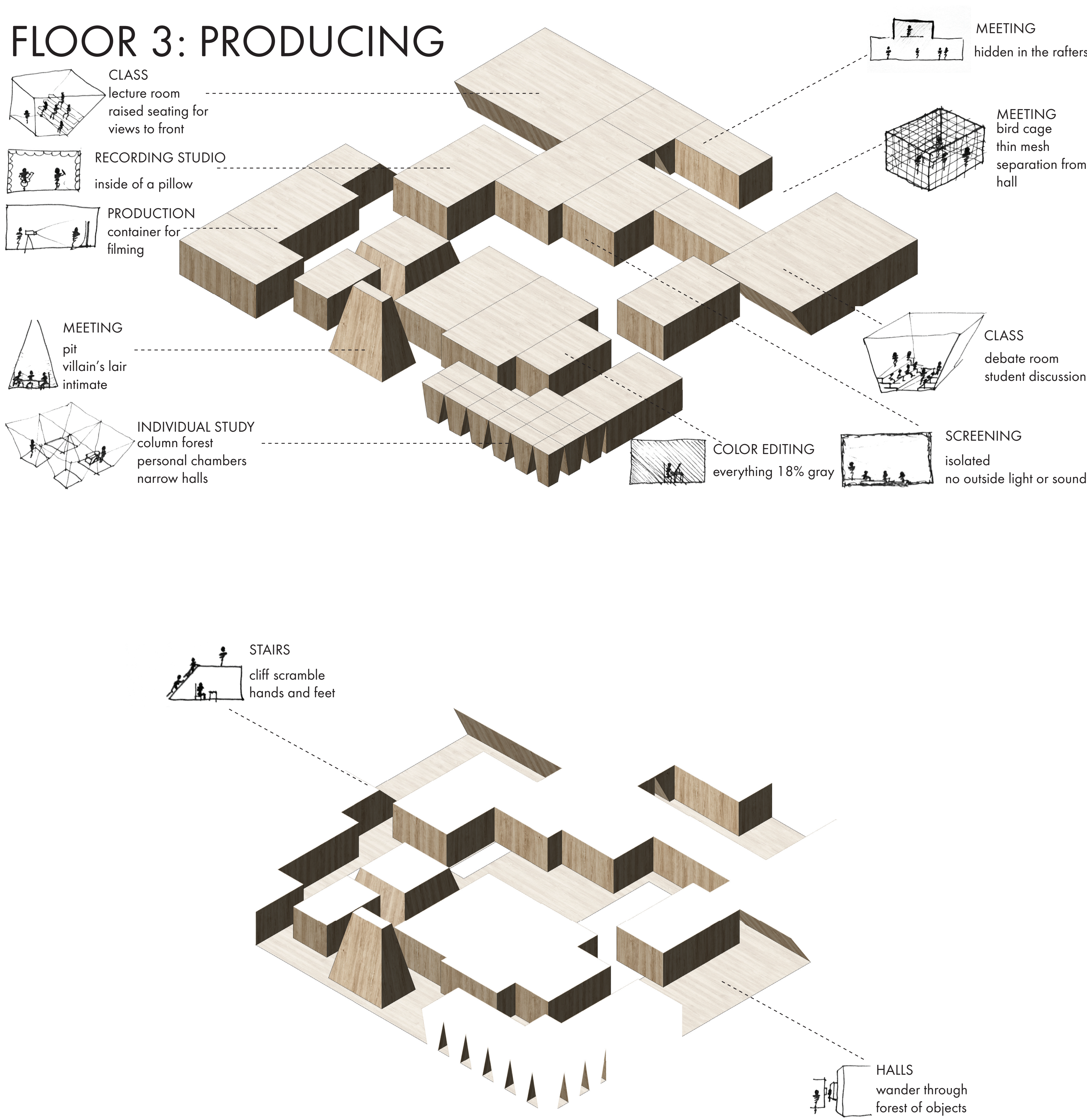


Forms are enclosed in a steel frame

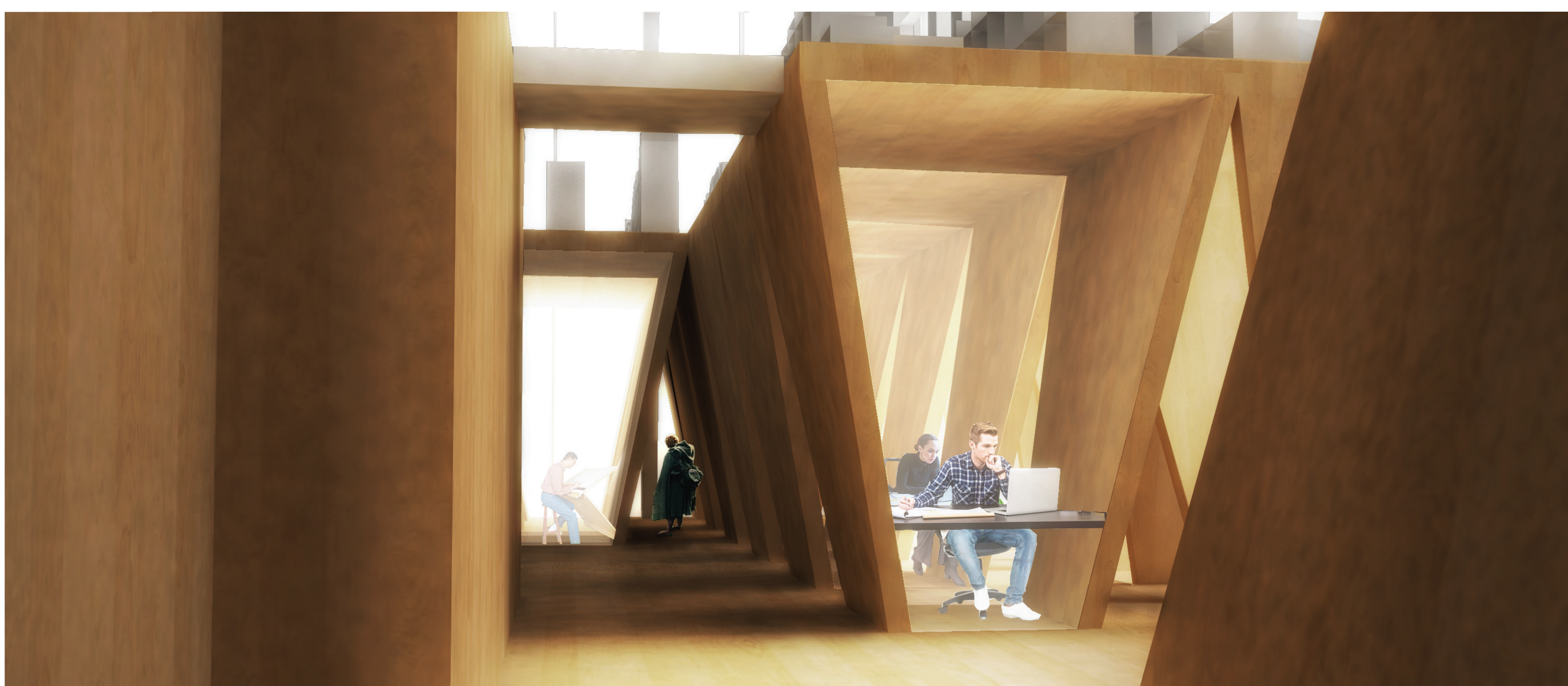
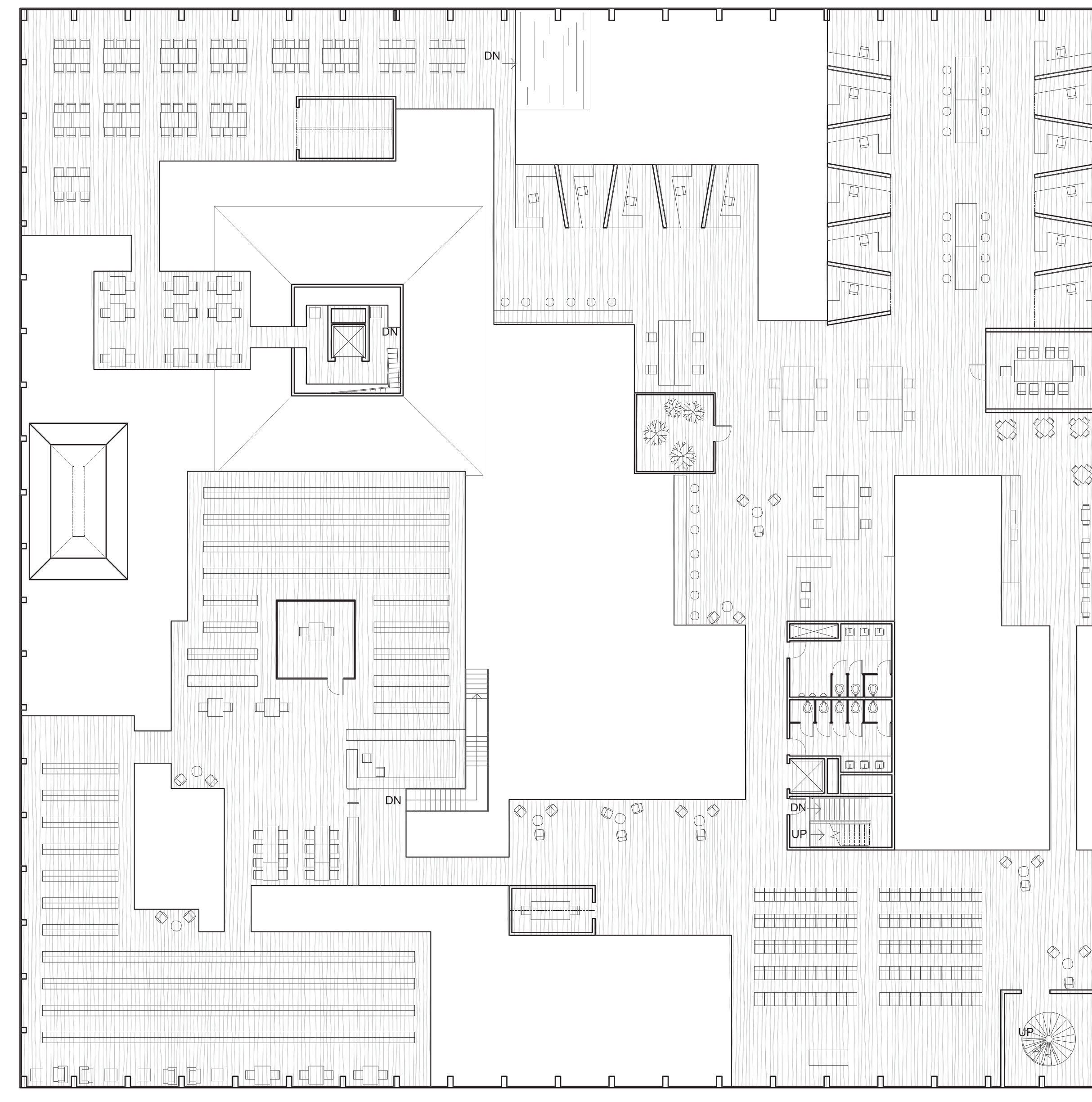
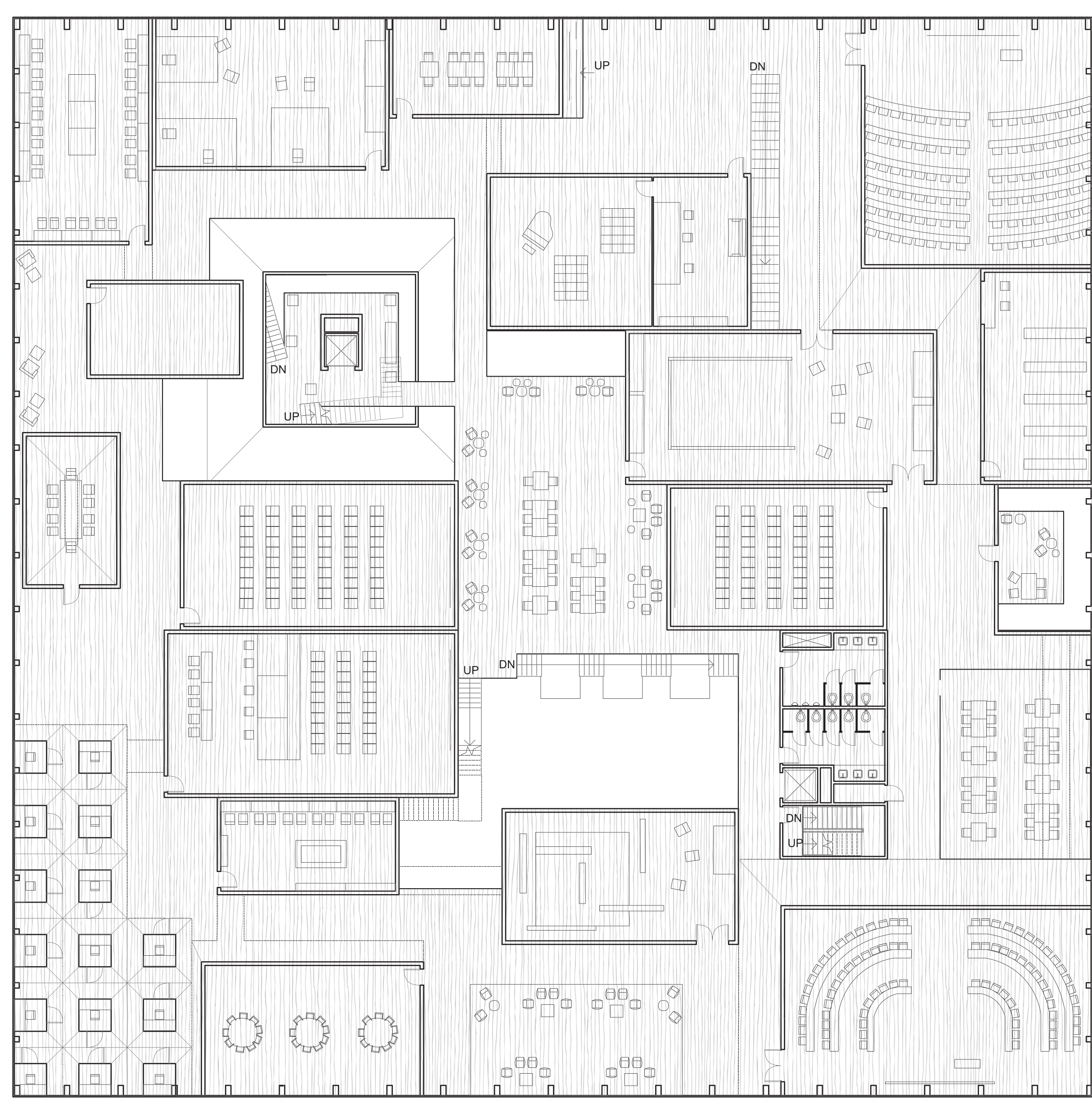
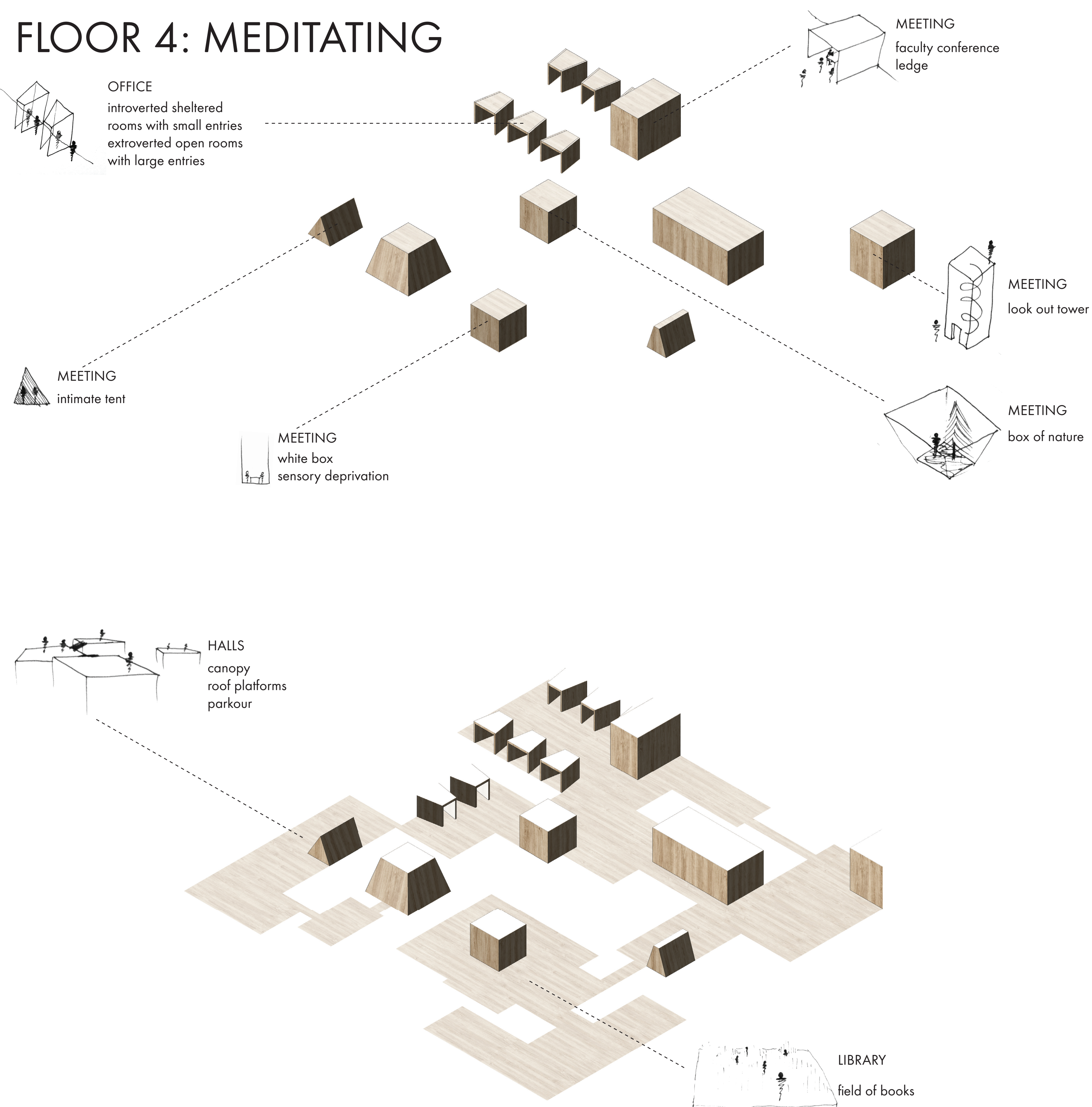




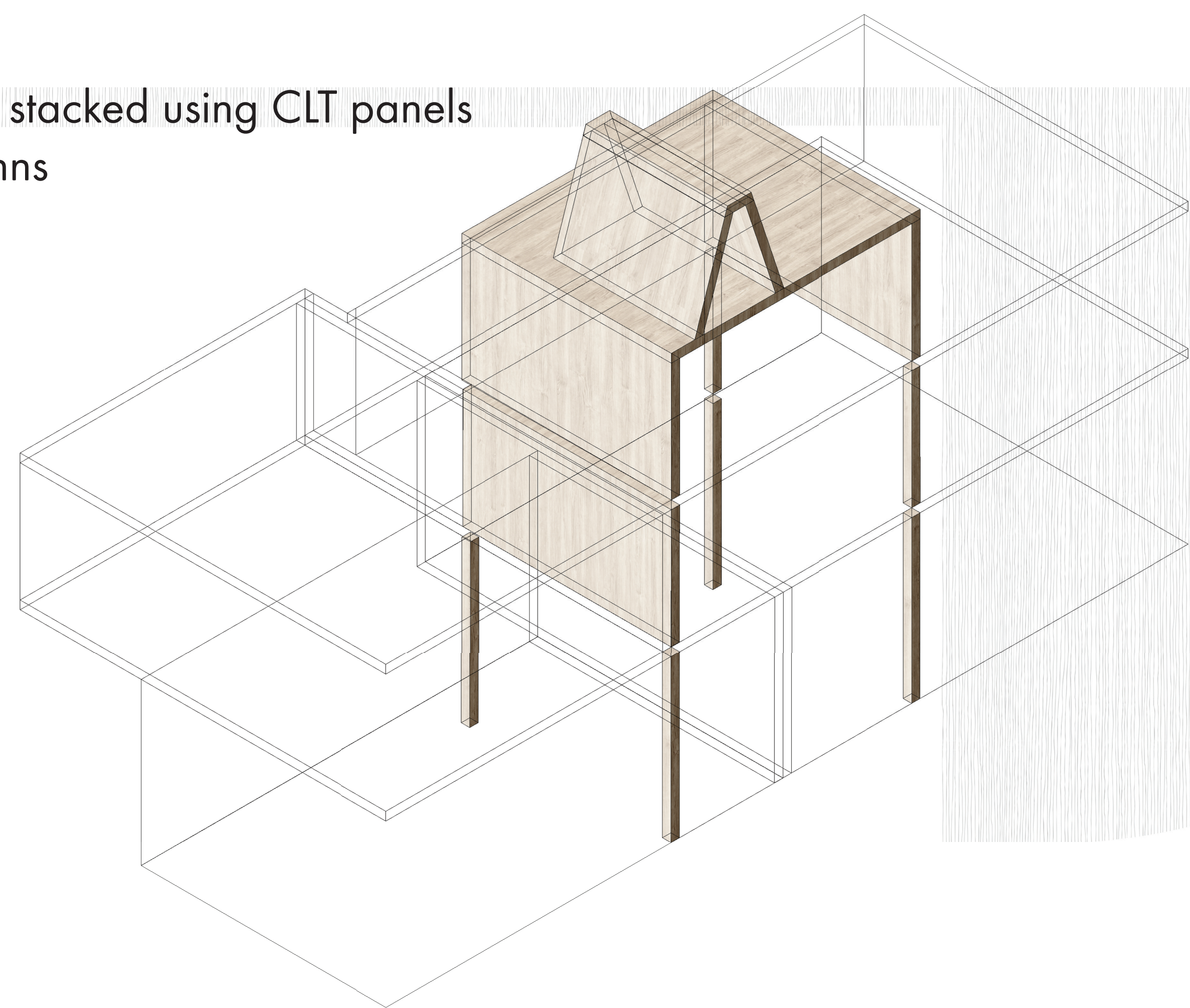
FLOOR 3: PRODUCING



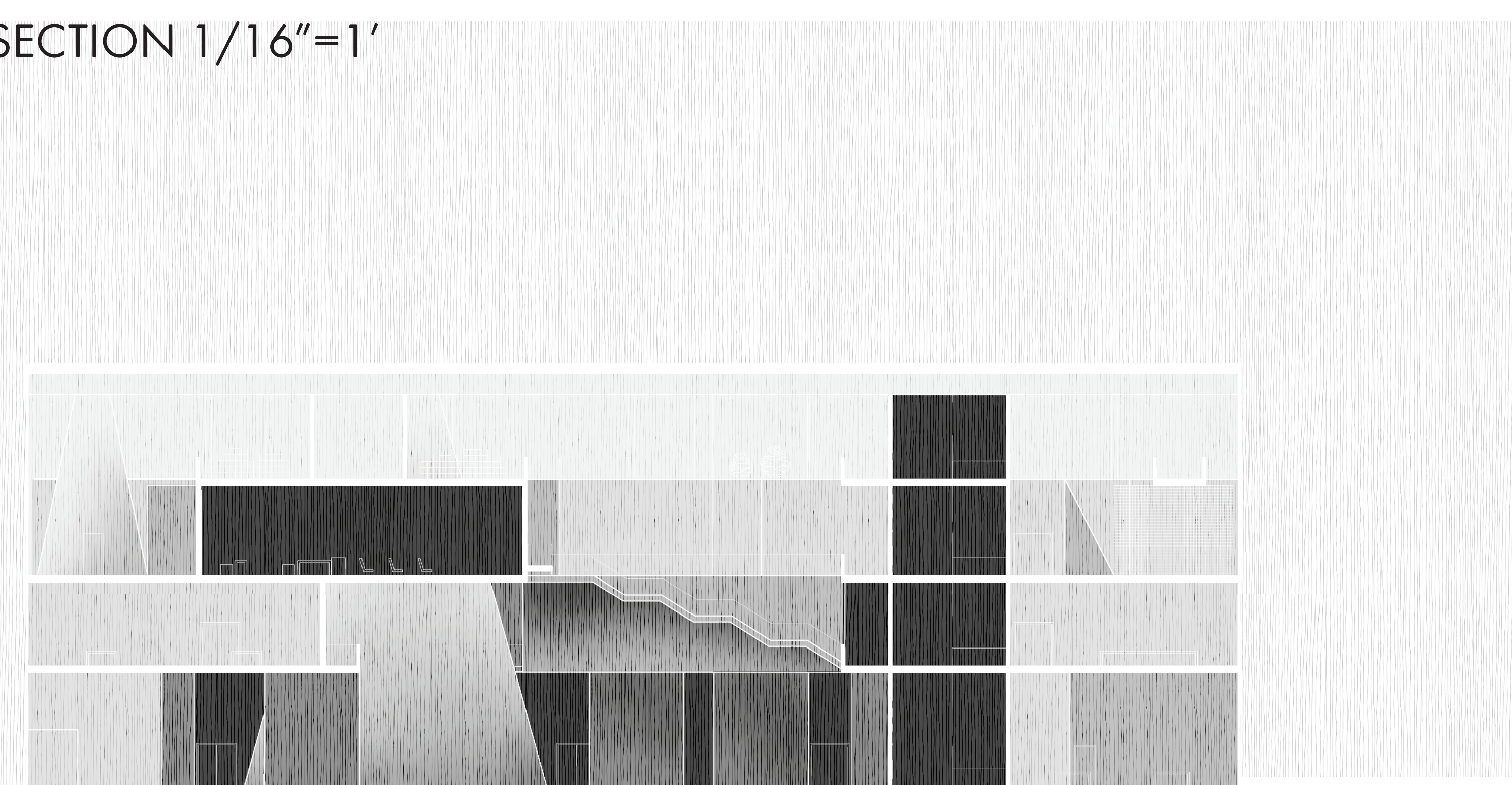
FLOOR 4: MEDITATING



Forms are stacked using CLT panels and columns



EAST WEST SECTION 1/16"=1'



The Institute of the Moving Image occupies one block of the new Post Office Blocks in the Pearl District, extending the Park Blocks to the Broadway Bridge. The concept of building around the experiences is taken to the urban design level. The parks become a forest path, a hilltop, a piazza, and a field for play.

