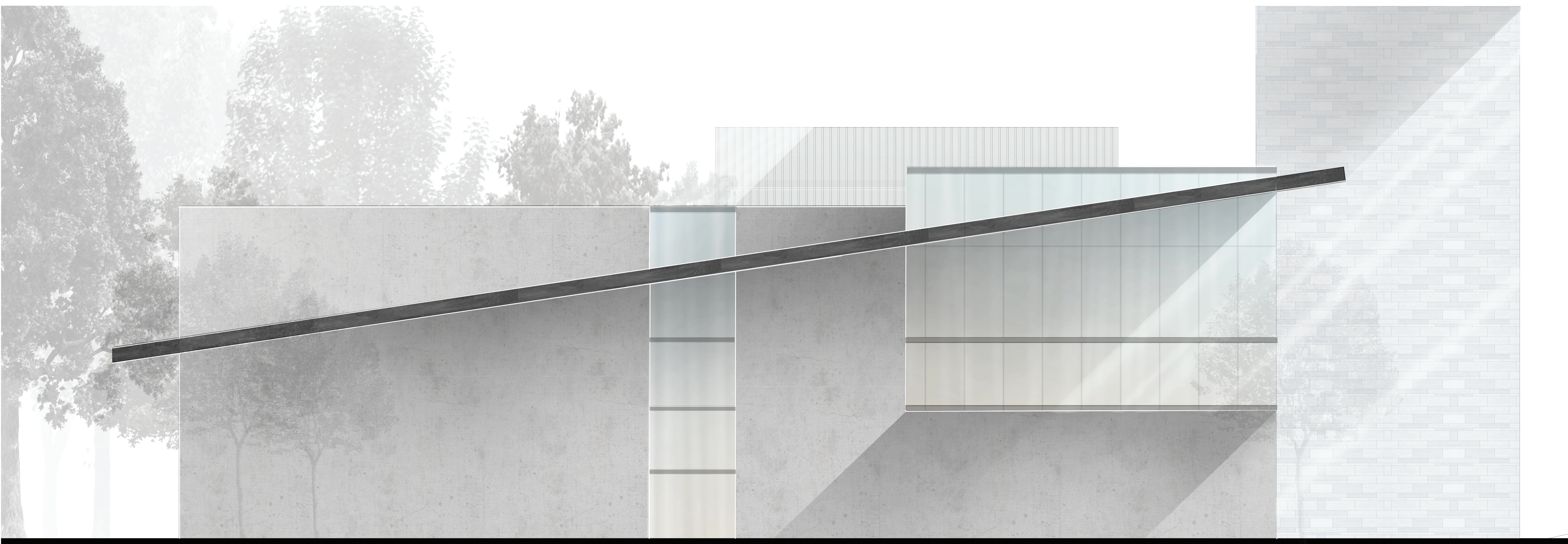
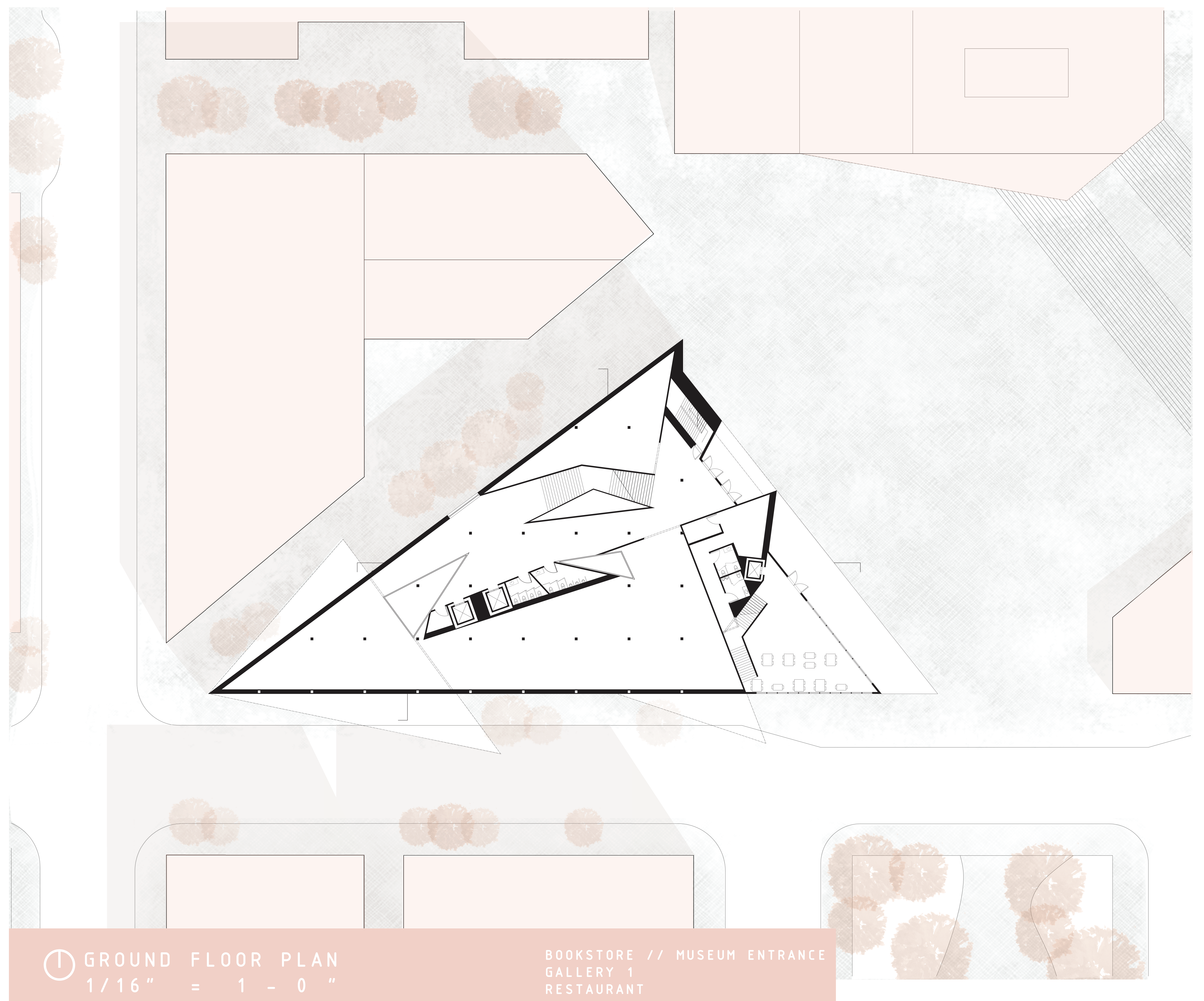
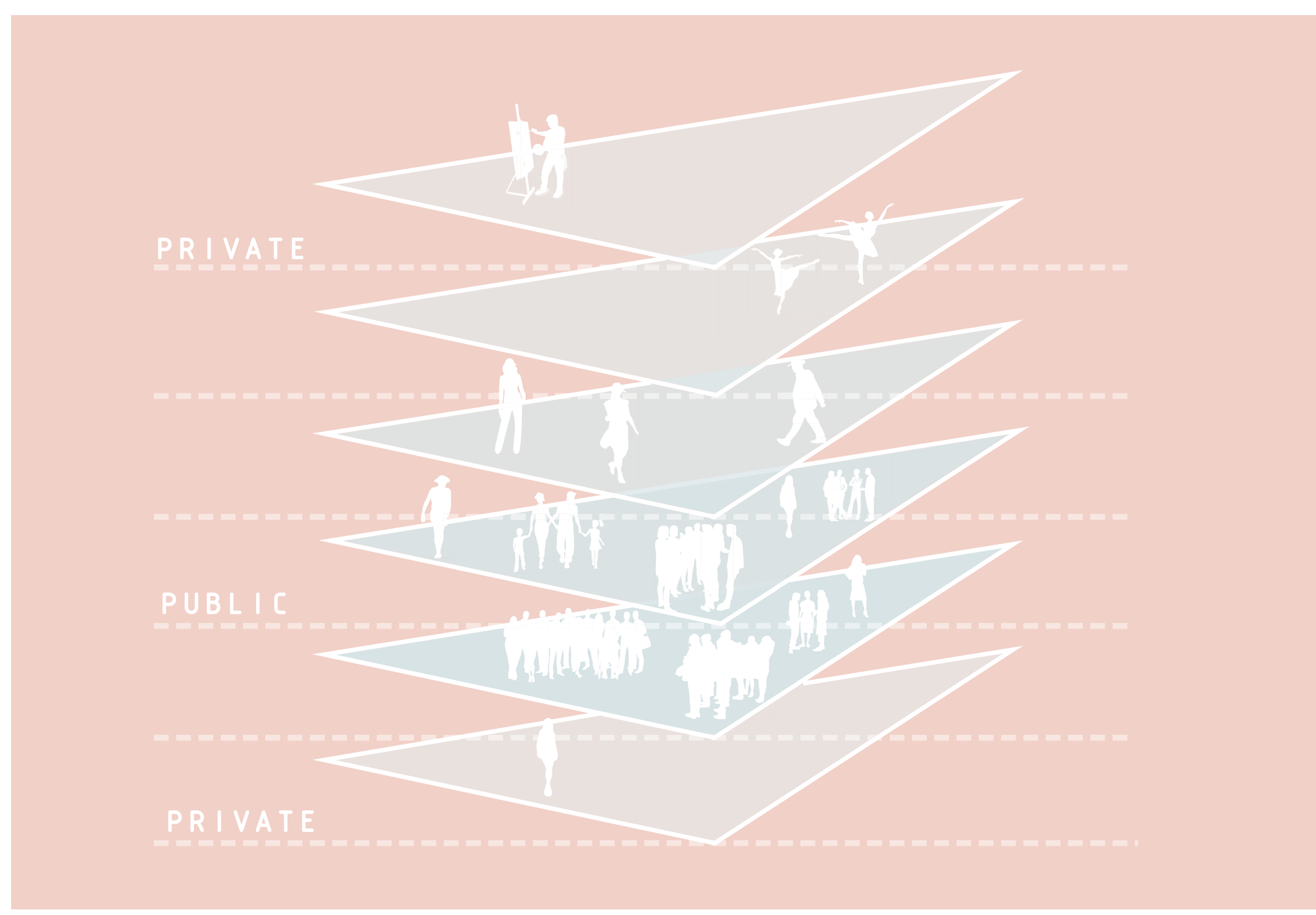
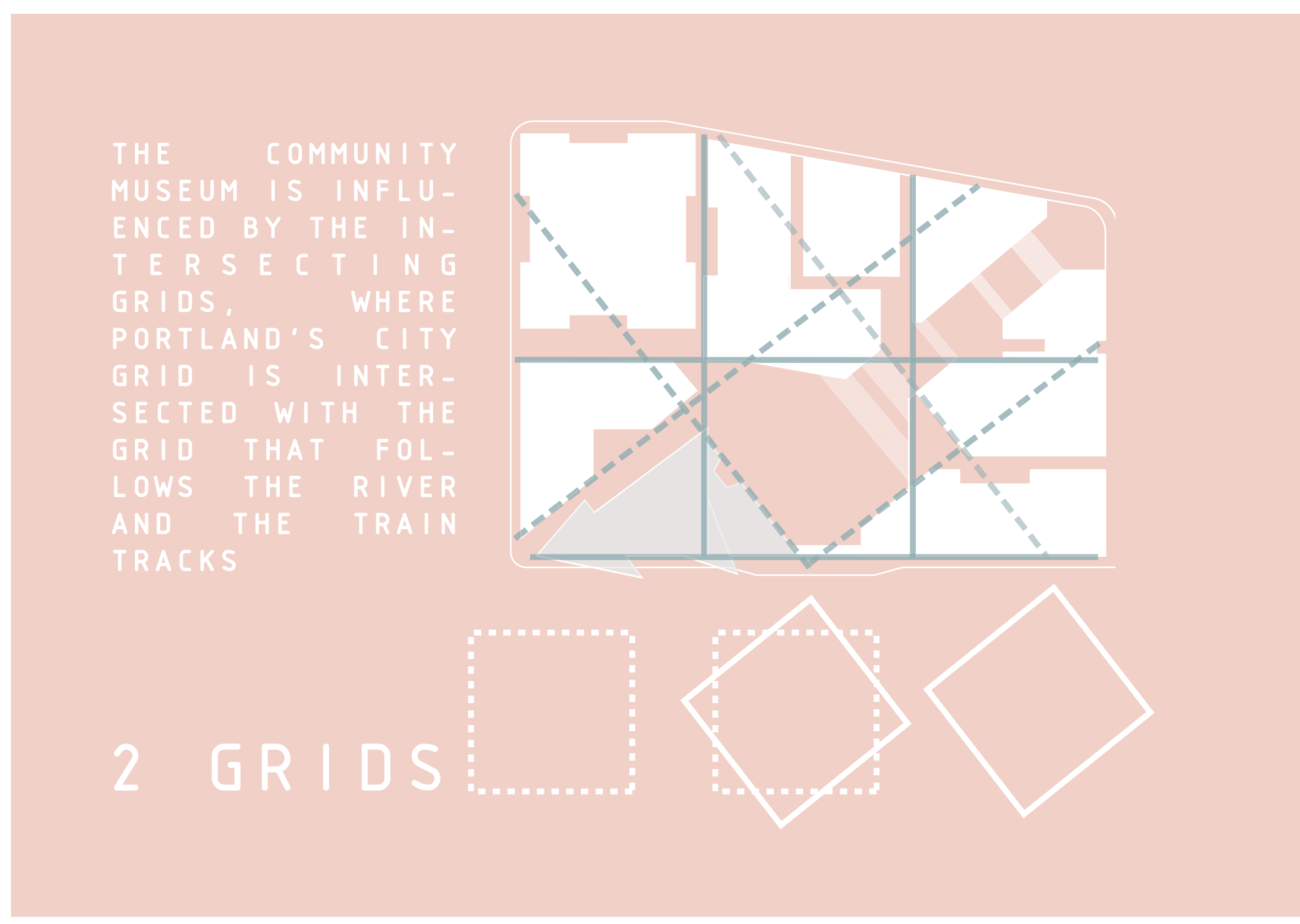
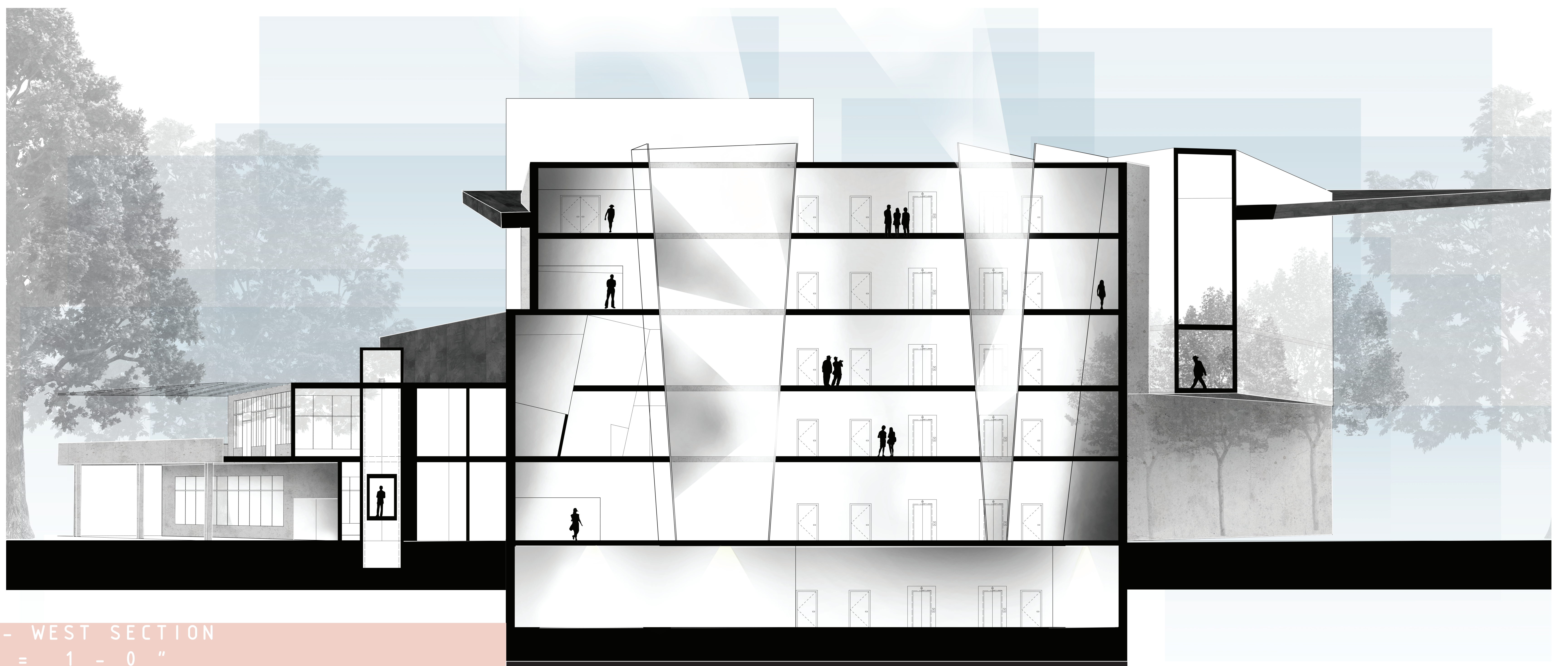


PORTLAND COMMUNITY MUSEUM

ANYA DANIELS // ARCH 486 // SPRING 2017



NORTH - WEST ELEVATION
1/16" = 1 - 0"



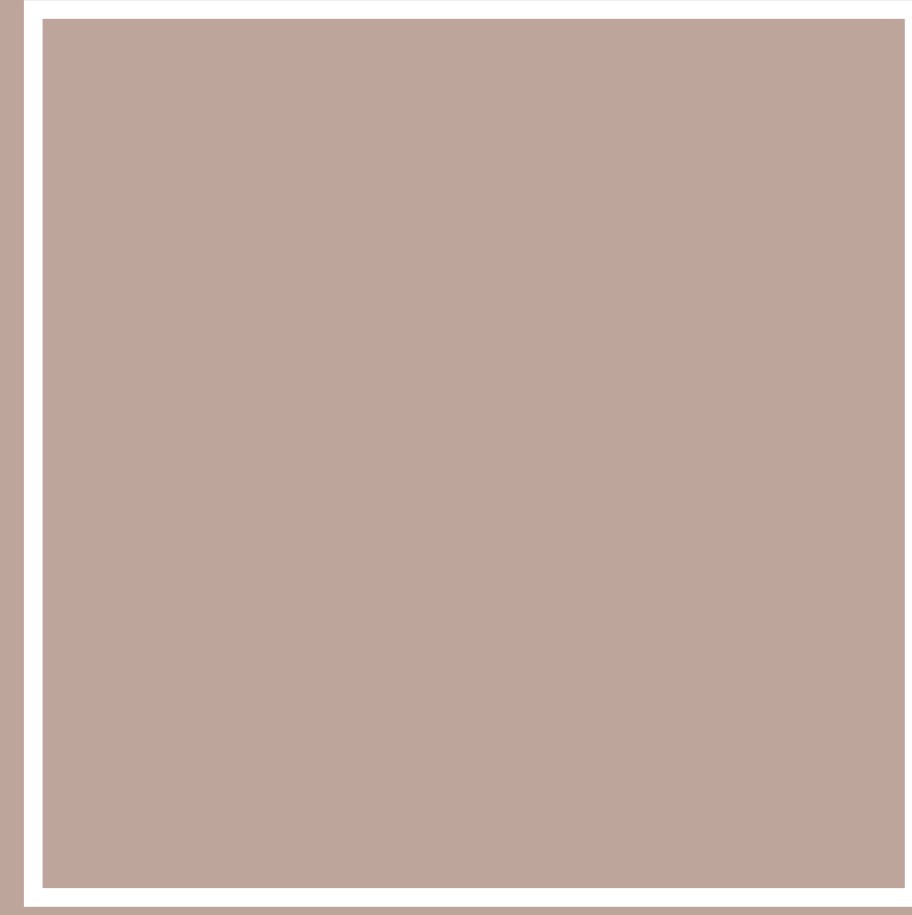
NORTH - WEST SECTION
1/16" = 1 - 0"

COMMUNITY EMPOWERMENT

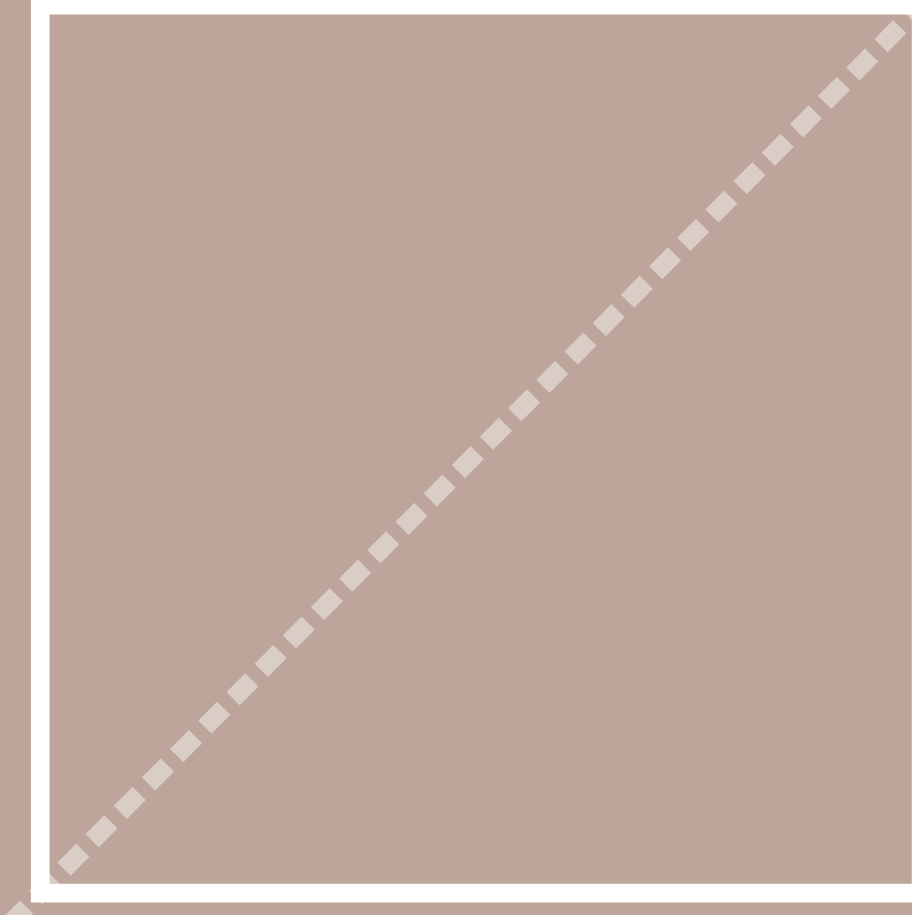
THE PORTLAND COMMUNITY MUSEUM WILL ENHANCE UNDERSTANDING OF CONTEMPORARY URBAN EXPERIENCES AND STRENGTHEN COMMUNITY BONDS BY CONSERVING THE PAST, DOCUMENTING THE PRESENT AND SERVING AS A CATALYST FOR SHAPING THE FUTURE

THE COMMUNITY MUSEUM WILL PRACTICE EXHIBITION DEVELOPMENT, WHERE THERE IS A DIRECT COLLABORATION WITH COMMUNITIES, AND WORKING DIRECTLY WITH RESIDENTS, MEMBERS OF THE NEIGHBORHOOD, ORGANIZATIONS, ARTISTS, COMMUNITY ACTIVISTS, PLANNING ORGANIZATIONS, SCHOLARS, LOCAL OFFICIALS, LOCAL BUSINESSES AND FAMILIES.

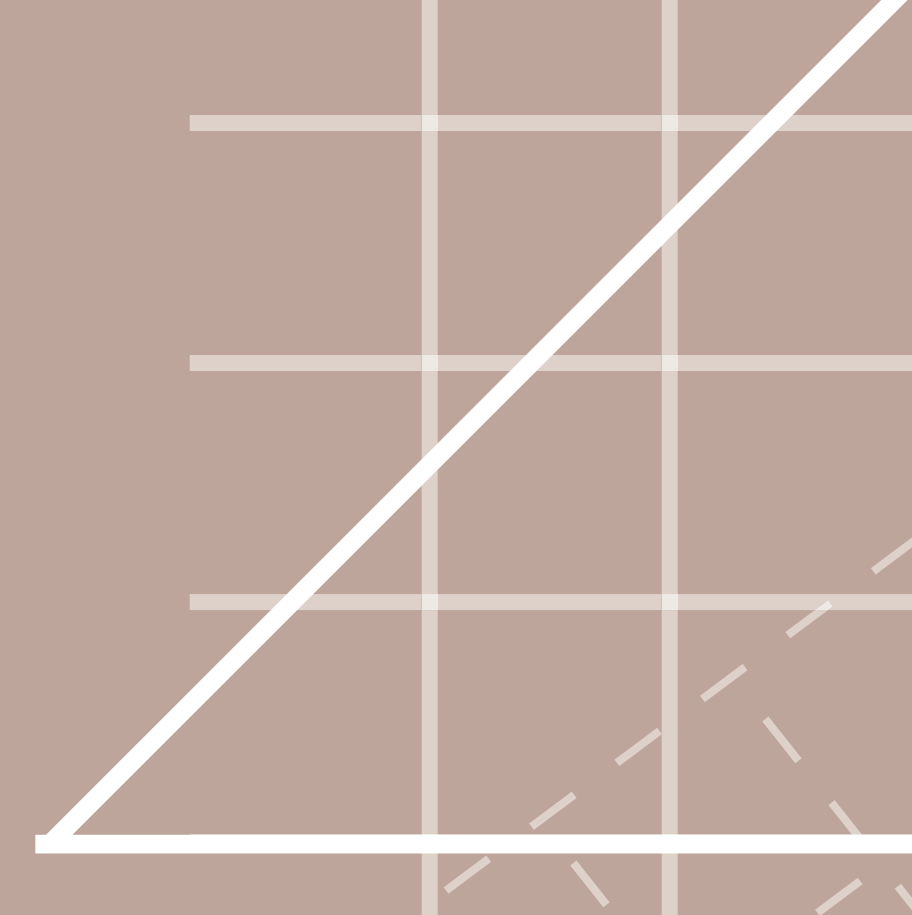
DISCOVERY



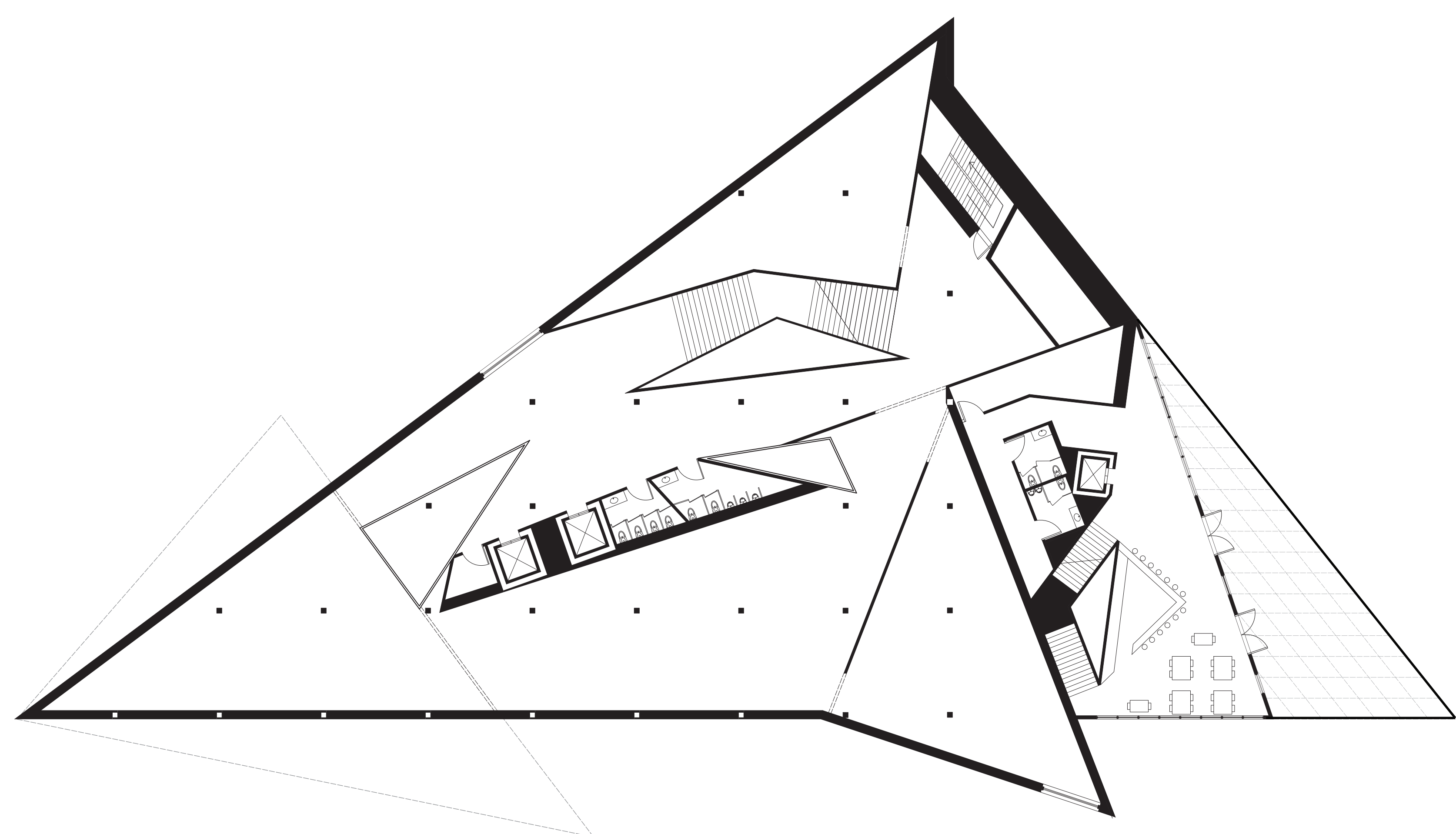
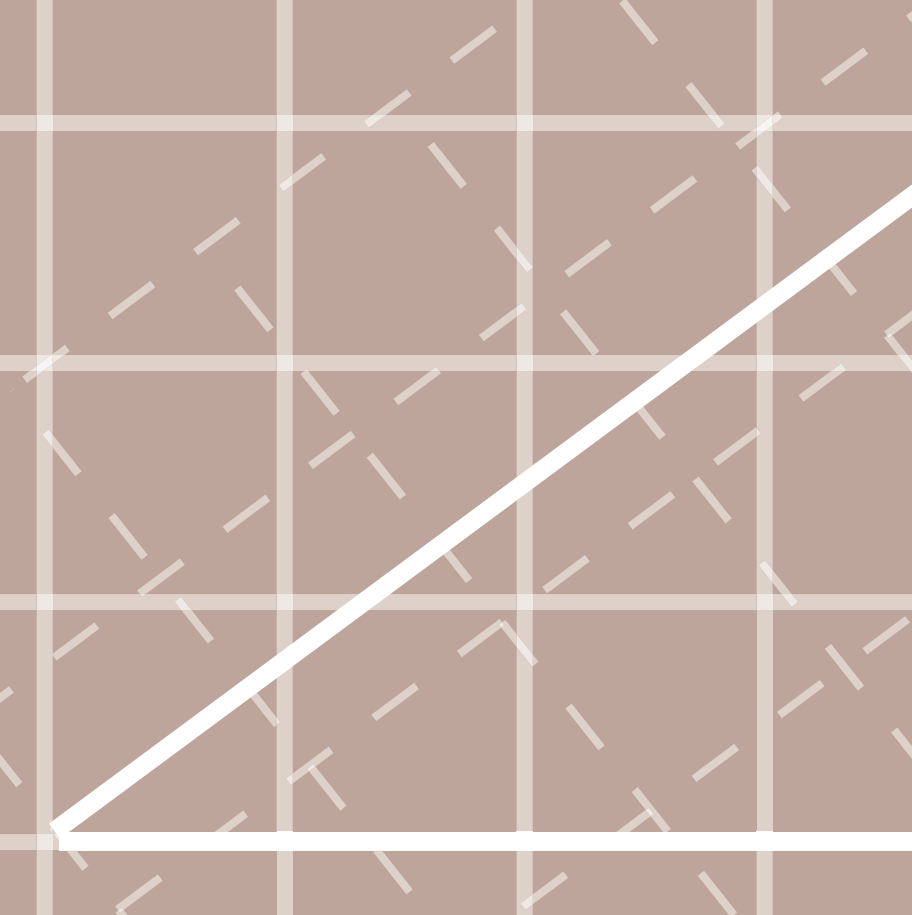
EXCELLENCE



INTEGRITY

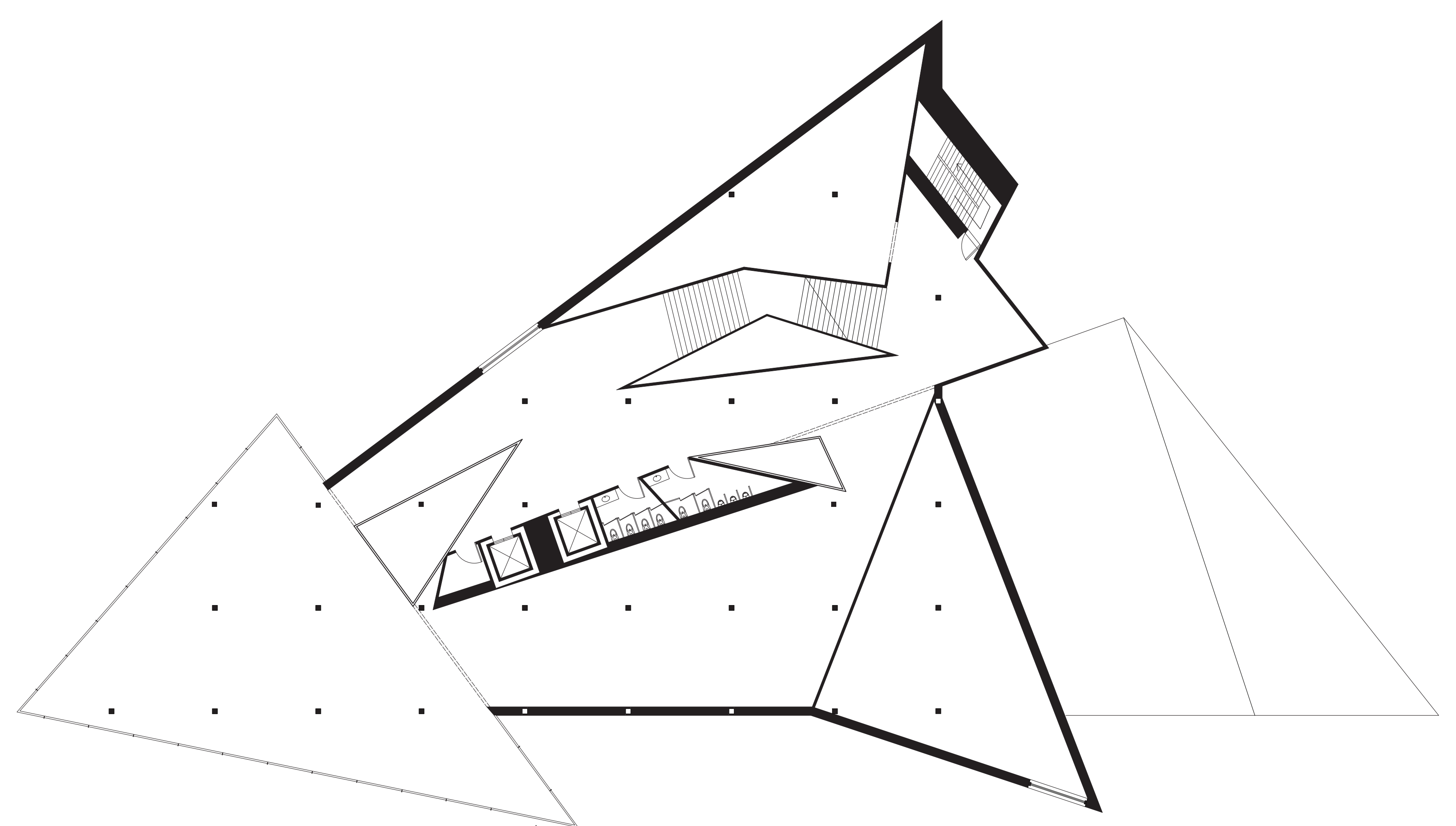


SERVICE



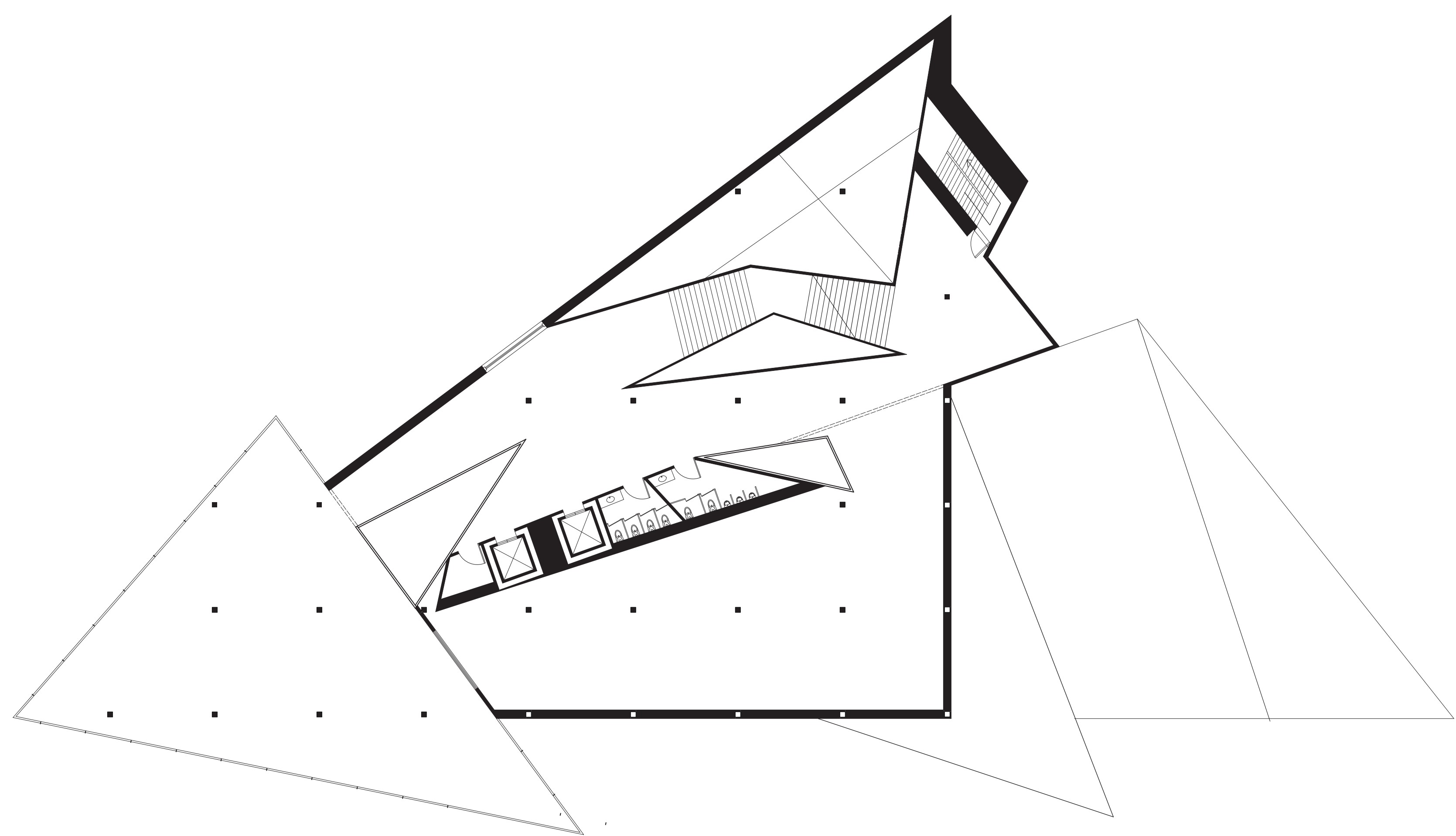
SECOND FLOOR PLAN
1/16" = 1 - 0"

FILM EXHIBITION
GALLERY 2
GALLERY 3



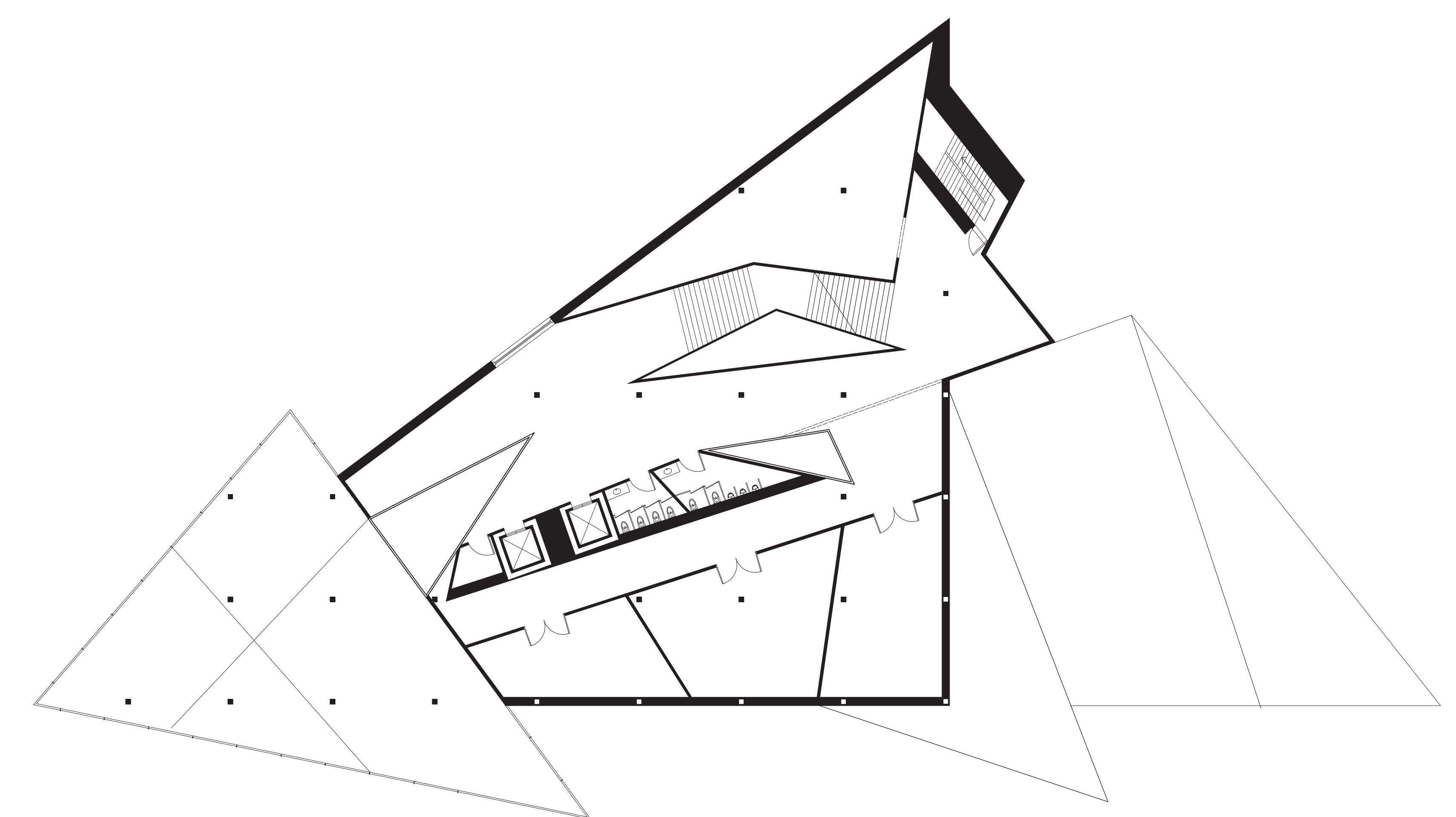
THIRD FLOOR PLAN
1/16" = 1 - 0"

GALLERY 4
SCULPTURE GALLERY
TRAVELING EXHIBITION



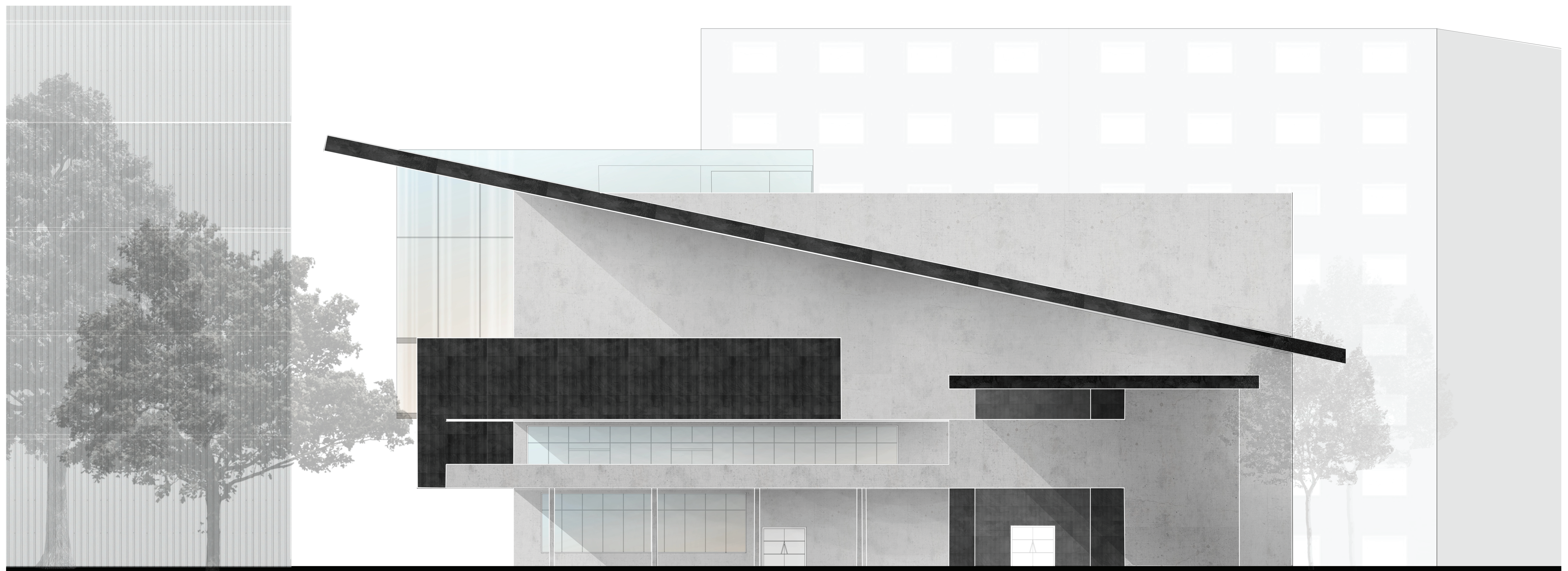
FOURTH FLOOR PLAN
1/16" = 1 - 0"

DANCE STUDIO
COMMUNITY EXHIBITION SPACE



FIFTH FLOOR PLAN
1/16" = 1 - 0"

DRAWING WORKSHOP
CERAMIC WORKSHOP
PAINTING WORKSHOP
WOODSHOP



NORTH - EAST ELEVATION
1/16" = 1 - 0"



NORTH - EAST SECTION
1/16" = 1 - 0"