



Oregon

Theodore R. Kulongoski, Governor

Department of Land Conservation and Development

635 Capitol Street, Suite 150

Salem, OR 97301-2540

(503) 373-0050

Fax (503) 378-5518

www.lcd.state.or.us



NOTICE OF ADOPTED AMENDMENT

05/19/2014

TO: Subscribers to Notice of Adopted Plan
or Land Use Regulation Amendments

FROM: Plan Amendment Program Specialist

SUBJECT: City of Lake Oswego Plan Amendment
DLCD File Number 003-14

The Department of Land Conservation and Development (DLCD) received the attached notice of adoption. A Copy of the adopted plan amendment is available for review at the DLCD office in Salem and the local government office.

Appeal Procedures*

DLCD ACKNOWLEDGMENT or DEADLINE TO APPEAL: Monday, June 02, 2014

This amendment was not submitted to DLCD for review prior to adoption pursuant to OAR 660-18-060, the Director or any person is eligible to appeal this action to LUBA under ORS 197.830 to 197.845.

If you wish to appeal, you must file a notice of intent to appeal with the Land Use Board of Appeals (LUBA) no later than 21 days from the date the decision was mailed to you by the local government. If you have questions, check with the local government to determine the appeal deadline. Copies of the notice of intent to appeal must be served upon the local government and others who received written notice of the final decision from the local government. The notice of intent to appeal must be served and filed in the form and manner prescribed by LUBA, (OAR Chapter 661, Division 10). Please call LUBA at 503-373-1265, if you have questions about appeal procedures.

***NOTE:** The Acknowledgment or Appeal Deadline is based upon the date the decision was mailed by local government. A decision may have been mailed to you on a different date than it was mailed to DLCD. As a result, your appeal deadline may be earlier than the above date specified. NO LUBA Notification to the jurisdiction of an appeal by the deadline, this Plan Amendment is acknowledged.

Cc: Andrea Christenson, City of Lake Oswego
Gordon Howard, DLCD Urban Planning Specialist

<paa>



NOTICE OF ADOPTED CHANGE TO A COMPREHENSIVE PLAN OR LAND USE REGULATION

FOR DLCD USE	003-14
	(20367)
File No.:	[17871]
Received:	5/12/2014

Local governments are required to send notice of an adopted change to a comprehensive plan or land use regulation **no more than 20 days after the adoption.** (See [OAR 660-018-0040](#)). The rules require that the notice include a completed copy of this form. **This notice form is not for submittal of a completed periodic review task or a plan amendment reviewed in the manner of periodic review.** Use [Form 4](#) for an adopted urban growth boundary including over 50 acres by a city with a population greater than 2,500 within the UGB or an urban growth boundary amendment over 100 acres adopted by a metropolitan service district. Use [Form 5](#) for an adopted urban reserve designation, or amendment to add over 50 acres, by a city with a population greater than 2,500 within the UGB. Use [Form 6](#) with submittal of an adopted periodic review task.

Jurisdiction: City of Lake Oswego

Local file no.: **LU 13-0062 (Ordinance 2635)**

Date of adoption: 05/06/14 Date sent: 5/12/2014

Was Notice of a Proposed Change (Form 1) submitted to DLCD?

- Yes: Date (use the date of last revision if a revised Form 1 was submitted): 11/27/13
 No

Is the adopted change different from what was described in the Notice of Proposed Change? Yes No
 If yes, describe how the adoption differs from the proposal:

The adopted code amendment was slightly revised from the draft submitted with the Notice of Proposed Changes. The revisions were for clarity and did not have a substantive impact on the proposal.

Local contact (name and title): Andrea Christenson, Natural Resources Planner

Phone: 503-675-3990 E-mail: achristenson@ci.oswego.or.us

Street address: PO Box 369 City: Lake Oswego Zip: 97034-

PLEASE COMPLETE ALL OF THE FOLLOWING SECTIONS THAT APPLY

For a change to comprehensive plan text:

Identify the sections of the plan that were added or amended and which statewide planning goals those sections implement, if any:

For a change to a comprehensive plan map:

Identify the former and new map designations and the area affected:

Change from RC District overlay to no RC District overlay. 6.20 acres. A goal exception was required for this change.

Change from _____ to _____ acres. A goal exception was required for this change.

Change from _____ to _____ acres. A goal exception was required for this change.

Change from _____ to _____ acres. A goal exception was required for this change.

Location of affected property (T, R, Sec., TL and address): See Attachment B of ordinance.

- The subject property is entirely within an urban growth boundary
 The subject property is partially within an urban growth boundary

NOTICE OF ADOPTED CHANGE – SUBMITTAL INSTRUCTIONS

1. A Notice of Adopted Change must be received by DLCD no later than 20 days after the ordinance(s) implementing the change has been signed by the public official designated by the jurisdiction to sign the approved ordinance(s) as provided in [ORS 197.615](#) and [OAR 660-018-0040](#).

2. A Notice of Adopted Change must be submitted by a local government (city, county, or metropolitan service district). DLCD will not accept a Notice of Adopted Change submitted by an individual or private firm or organization.

3. **Hard-copy submittal:** When submitting a Notice of Adopted Change on paper, via the US Postal Service or hand-delivery, print a completed copy of this Form 2 on light green paper if available. Submit **one copy** of the proposed change, including this form and other required materials to:

Attention: Plan Amendment Specialist
Dept. of Land Conservation and Development
635 Capitol Street NE, Suite 150
Salem, OR 97301-2540

This form is available here:

<http://www.oregon.gov/LCD/forms.shtml>

4. **Electronic submittals** of up to 20MB may be sent via e-mail. Address e-mails to plan.amendments@state.or.us with the subject line “Notice of Adopted Amendment.”

Submittals may also be uploaded to DLCD’s FTP site at http://www.oregon.gov/LCD/Pages/papa_submittal.aspx.

E-mails with attachments that exceed 20MB will not be received, and therefore FTP must be used for these electronic submittals. **The FTP site must be used for all .zip files** regardless of size. The maximum file size for uploading via FTP is 150MB.

Include this Form 2 as the first pages of a combined file or as a separate file.

5. **File format:** When submitting a Notice of Adopted Change via e-mail or FTP, or on a digital disc, attach all materials in one of the following formats: Adobe .pdf (preferred); Microsoft Office (for example, Word .doc or docx or Excel .xls or .xlsx); or ESRI .mxd, .gdb, or .mpk. For other file formats, please contact the plan amendment specialist at 503-934-0017 or plan.amendments@state.or.us.

6. **Content:** An administrative rule lists required content of a submittal of an adopted change ([OAR 660-018-0040\(3\)](#)). By completing this form and including the materials listed in the checklist below, the notice will include the required contents.

Where the amendments or new land use regulations, including supplementary materials, exceed 100 pages, include a summary of the amendment briefly describing its purpose and requirements.

7. Remember to notify persons who participated in the local proceedings and requested notice of the final decision. ([ORS 197.615](#))

If you have any questions or would like assistance, please contact your DLCD regional representative or the DLCD Salem office at 503-934-0017 or e-mail plan.amendments@state.or.us.

Notice checklist. Include all that apply:

- Completed Form 2
- A copy of the final decision (including the signed ordinance(s)). This must include city *and* county decisions for UGB and urban reserve adoptions
- The findings and the text of the change to the comprehensive plan or land use regulation
- If a comprehensive plan map or zoning map is created or altered by the proposed change:
 - A map showing the area changed and applicable designations, and
 - Electronic files containing geospatial data showing the area changed, as specified in [OAR 660-018-0040\(5\)](#), if applicable
- Any supplemental information that may be useful to inform DLCD or members of the public of the effect of the actual change

ORDINANCE NO. 2635

AN ORDINANCE OF THE CITY COUNCIL OF THE CITY OF LAKE OSWEGO AMENDING LOC SECTIONS 50.07.004.8 AND 50.10.003 TO ELIMINATE ISOLATED TREE GROVES ON PRIVATE LOTS FROM THE APPLICABILITY OF RESOURCE CONSERVATION (RC) OVERLAY DISTRICTS, AND AMENDING THE LAKE OSWEGO COMPREHENSIVE PLAN MAP AND ZONING MAP TO REMOVE RC OVERLAY DISTRICT DESIGNATIONS FROM 37 PROPERTIES. (LU 13-0062-1831)

WHEREAS, the City has initiated a request to amend LOC 50.07.004.8 and 50.10.003, which, together with LOC 50.05.010, implement the City’s Sensitive Lands Protection Program (Goal 5); and

WHEREAS, the proposed amendment removes “Isolated Tree Groves” on private lots as a resource eligible for RC District designation; and

WHEREAS, notice of the public hearings relating to consideration of this Ordinance was duly given in the manner required by law; and

WHEREAS, a public hearing was held before the Lake Oswego Planning Commission on January 27th, 2014 at which the staff report, testimony, and evidence were received and considered; and

WHEREAS, a public hearing was held before the City Council of the City of Lake Oswego on April 1st, 2014 at which the staff report, testimony, and evidence were received and considered;

The City of Lake Oswego ordains as follows:

Section 1. The City Council hereby adopts the Findings and Conclusions attached as Attachment “A.”

Section 2. LOC 50.07.004.8.a is hereby amended as follows (new text shown in **bold, double-underlined type**; deleted text shown in ~~striketrough type~~):

50.07.004.8.a Criteria for Designating Property within an Overlay District

* * *

vi. Applicability of RC Overlay District

The Resource Conservation (RC) Overlay District shall protect significant tree groves. A tree grove may be placed within an RC District if ~~the tree grove has it~~:

- (1) Type of Tree Grove:**
 - (a) Is an Associated Tree Grove; or**
 - (b) Is an Isolated Tree Grove located on public open space, on a private designated open space tract, or on property brought into**

the Urban Growth Boundary after December 28, 2005; and

(2) Quality of Tree Grove:

- (a)** ~~A~~ **Has a** HAS ranking of at least 35; or
- (b)** ~~A~~ **Has a** "high" ranking for scenic values in the study; or
- (c)** Is associated with a stream corridor or wetland that has an RP ranking.

Section 3. LOC 50.07.004.8.b is hereby amended as follows (new text shown in **bold, double-underlined type**; deleted text shown in ~~strikethrough type~~):

50.07.004.8.b Removing an Overlay District Designation

- i. In order to remove an overlay District designation the review body shall find that one of the following criteria is met:
 - (1) As a result of natural occurrences or evolution the resource has been degraded to the extent that the subject property no longer meets the criteria for designation found in LOC 50.07.004.8.a.iv and (v), above, and a re-application of the ESEE analysis demonstrates that the designation is no longer justified; or
 - (2) There was a mistake in the analysis of quality or quantity in the original designation of the resource and a re-application of the ESEE analysis demonstrates that the designation no longer meets the criteria; or
 - (3) There was a mistake in the location of the original designation of the resource, such that no portion of the resource was on the subject property; or
 - (4) The Tree Grove is an Isolated Tree Grove not located on public open space, on a private designated open space tract, or on property brought into the Urban Growth Boundary after December 28, 2005. If the area is identified as upland wildlife habitat on Metro's Regionally Significant Fish and Wildlife Habitat Inventory Map (Inventory Map), removing the RC District shall comply with Metro Code Section 3.07.1330(A)(2). If the area is not identified as upland wildlife habitat on Metro's Inventory Map, or MC 3.07.1330(A)(2) is not applicable, a re-application of the ESEE analysis shall demonstrate that the designation is no longer justified.**
- ii. An overlay district designation shall not be removed as a result of damage caused by the property owner, another party, or other than natural causes.

- iii. A removal application pursuant to subsection b.i(1), ~~or b.i(2)~~, or b.i(4), above, shall be processed in the same ~~manner~~ manner as a designation application pursuant to LOC 50.07.008.a.
- iv. An Overlay District Designation may be removed pursuant to b.i(3), above, by a delineation on the subject site in accordance with LOC 50.07.004.8.d and a finding that there is not now nor was there any resource located upon the site at the time of designation.

Section 4. LOC 50.10.003.2 is hereby amended as follows (new text shown in **bold, double-underlined type**; deleted text shown in ~~strikethrough type~~):

50.10.003.2 Definition of Terms

The following terms shall mean:

* * *

Tree Grove

A stand of three or more trees (of the same species or a mixture) which form a visual and biological unit, including the area between the forest floor and the canopy, including skyline trees, and including any understory vegetation existing within the canopied area. A stand of trees must be at least 15 feet in height and must have a contiguous crown width of at least 120 feet to qualify as a tree grove.

- (i) ~~Associated Tree Grove. A tree grove that is contiguous with the boundaries of a designated stream corridor or wetland and~~ **An associated tree grove is one that** contributes to the resource value of the **a** riparian area by extending and operating in conjunction with the habitat of the riparian area and providing flood control and water quality enhancement. **A tree grove is associated if any portion of its subsite is contiguous with an RP District (stream corridor or wetland), or is contiguous with an RC District (tree grove) that itself is contiguous with an RP District. A tree grove subsite is a unit of analysis in the Natural Resource Inventory, as existing or as updated.** ~~Such tree groves are located within the Protected Riparian Areas of a wetland or stream corridor but may extend beyond the Protected Riparian Area.~~
- (ii) ~~Isolated Tree Grove. A grove of trees that is not~~ **an Associated Tree Grove.** ~~associated with a stream corridor or wetland as described in subsection (a) of this definition.~~

* * *

Section 5. The Lake Oswego Comprehensive Plan Map and Zoning Map are hereby amended to remove the Resource Conservation (RC) District designation from the properties identified in Attachment B, as shown on the maps in Attachment C.


Read by title and enacted at the regular meeting of the City Council of the City of Lake Oswego held on the 6th day of May, 2014.

AYES: Gudman, Bowerman, Gustafson, Hughes, O'Neill

NOES: None

ABSTAIN: Mayor Studebaker, Councilor Jordan


EXCUSED: None



Kent Studebaker, Mayor

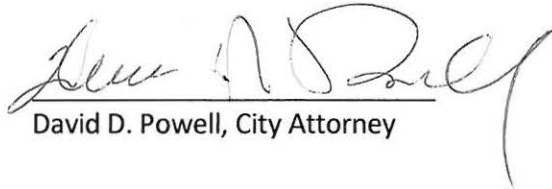
Dated: May 8, 2014

ATTEST:



Catherine Schneider, City Recorder

APPROVED AS TO FORM:



David D. Powell, City Attorney

1
2
3
4
5
6
7
8
9
10
11
12
13
14
15
16
17
18
19
20
21
22
23
24
25
26

**BEFORE THE CITY COUNCIL
OF THE CITY OF LAKE OSWEGO**

A REQUEST FOR AMENDMENTS TO THE COMMUNITY DEVELOPMENT CODE TO CHANGE THE CRITERIA FOR DESIGNATING AND REMOVING A RESOURCE CONSERVATION (RC) DISTRICT AND AMENDMENTS TO THE COMPREHENSIVE PLAN MAP AND ZONING MAP TO REMOVE THE EXISTING RC DISTRICT FROM 37 PROPERTIES.

LU 13-0062-1831
FINDINGS AND CONCLUSIONS

NATURE OF PROCEEDINGS

This matter came before the Lake Oswego City Council on the recommendation of the Planning Commission to amend the Community Development Code (LOC 50.07.004.8 and 50.10.003) to define "isolated tree grove" and change the criteria for designating and removing a Resource Conservation (RC) District. In conjunction with the Code amendments, Comprehensive Plan Map and Zoning Map amendments are proposed to remove the existing RC District designation from "isolated tree groves" on 37 properties.

HEARINGS

The Planning Commission held a public hearing and considered this application at its meeting of January 27, 2014. On February 10, 2014, the Commission adopted findings, conclusions and order making its recommendation. The City Council held a public hearing to consider the Planning Commission's recommendation on April 1, 2014.

CRITERIA AND STANDARDS

A. City of Lake Oswego Comprehensive Plan

- 1 Goal 1: Citizen Involvement
Policy 1
- 2 Goal 2: Land Use Planning
Section 1, Policy 4(a)
- 3 Goal 5: Open Spaces, Scenic and Historic Areas and Natural Resources
Section 1, Policies 1, 2, 3, 4 and 6
- 4 Section 2, Policies 1, 2, 3 and 14
Section 5, Policies 1, 4 and 5
- 5 Goal 6: Air, Water and Land Resources Quality
Section 1, Policy 3

6
7 B. Metro Urban Growth Management Functional Plan

8 Title 13: Nature in Neighborhoods

9 C. Oregon Statewide Planning Goals

- 10 Goal 1: Citizen Involvement
- 11 Goal 2: Land Use Planning
- 12 Goal 5: Natural Resources, Scenic and Historic Areas and Open Spaces
- 13 Goal 6: Air, Water and Land Resources Quality

14 D. Lake Oswego Community Development Code

- 15 LOC 50.07.003.8.b.ii Remands from LUBA to the City Council¹
- 16 LOC 50.07.003.16.a Legislative Decisions Defined
- 17 LOC 50.07.003.16.b Criteria for a Legislative Decision
- 18 LOC 50.07.003.16.c Required Notice to DLCD
- 19 LOC 50.07.003.16.d Planning Commission Recommendation Required
- 20 LOC 50.07.003.16.e City Council Review and Decision

21 **FINDINGS AND REASONS**

22 As its findings supporting its decision, the City Council incorporates the Planning
23 Commission’s February 10, 2014, Findings, Conclusions and Order; the January 27, 2014 staff
24 report, with all exhibits; and the March 21, 2014 staff Council Report with all exhibits; as
25 supplemented by the City Council’s further findings and conclusions below. In the event of any
26 inconsistency between the Council’s supplementary findings below and the incorporated

1 Ordinance 2589 previously adopted a similar amendment to the definition of “isolated tree groves” and removed the RC District from isolated tree groves on certain properties. The adoption of Ordinance 2589 was appealed to the Land Use Board of Appeals. Upon review, LUBA remanded the decision back to the City Council. The City Council remanded all issues relating to Ordinance 2589 to the Planning Commission, and staff submitted this new application to the Planning Commission.

1 materials staff report, the supplementary findings control. To the extent they are consistent
2 with the approval granted herein, the Council adopts by reference its oral deliberations on this
3 matter.

4 As outlined in detail in the incorporated materials, the City Council finds that the
5 proposed Code amendments comply with all applicable Comprehensive Plan policies, Oregon
6 Statewide Planning Goals, and Title 13 of the Metro Urban Growth Management Functional
7 Plan.

8 The City Council has adopted an updated Comprehensive Plan, which became effective
9 on April 18, 2014. The materials in the record were produced before that date. Consequently,
10 some Comprehensive Plan references in the record are to the previous version of the Plan.
11 However, as discussed in the incorporated March 21, 2014 Council Report, the applicable
12 Comprehensive Plan policies have either remained exactly the same (for policies under Goals 5
13 and 6) or are substantially similar (for policies under Goals 1 and 2). The Council finds that the
14 proposed Code amendments comply with the applicable policies of the current edition of the
15 Comprehensive Plan to the same extent that they were found in the incorporated materials to
16 comply with the corresponding policies in the previous edition of the Plan.
17

18 The Council also finds that the Resource Conservation Overlay District designations on
19 37 properties within the five subject isolated tree groves² meet the criteria for removal under
20 new LOC 50.07.004.8.b.(4) as described in the incorporated materials, and that the
21 Comprehensive Plan Map and Zoning Map should be amended accordingly.

22 /////
23 /////
24 /////

25 _____
26 ² TG-23, TG-24, TG-30, TG-31, and TG-32

1 CONCLUSION

2 The City Council concludes that LU 13-0062 complies with all applicable criteria and
3 should be approved. The Council also concludes that proposed Ordinance 2635, which
4 implements LU 13-0062, should be enacted.

5
6 AYES: Gudman, Bowerman, Gustafson, Hughes, O'Neill

7 NOES: None

8 ABSENT: None


9 ABSTAIN: Mayor Studebaker, Councilor Jordan

10 EXCUSED: None

11

12 DATED this 6th day of May, 2014.

13



Kent Studebaker, Mayor

14

15

16 ATTEST:



Catherine Schneider, City Recorder

17

18

19

20

21

22

23

24

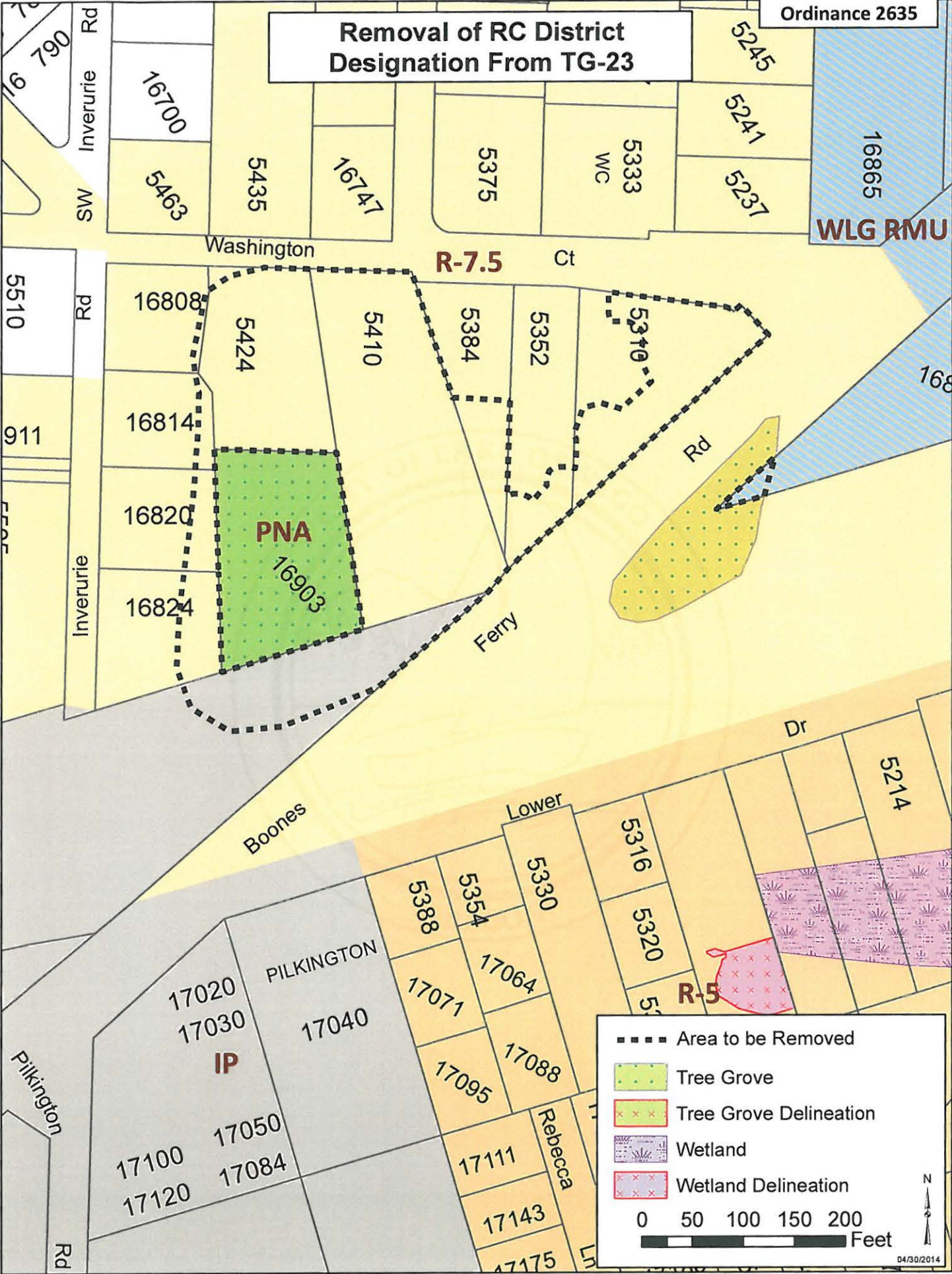
25

26

Tree Grove Number	Tax Lot ID	Owner	Property Address	City	ZIP Code	Parcel Area (sf)	Parcel Area (acres)
TG-23	21E18AB00400	BERG DORIS C	16858 BOONES FERRY RD	LAKE OSWEGO	97035-5253	24,672	0.57
TG-23	21E18AB00500	GESSARO JEREMY P & MICHELLE C	5384 WASHINGTON CT	LAKE OSWEGO	97035-5211	13,074	0.30
TG-23	21E18AB00503	DORIGAN JAMES T JR TRUSTEE	5352 WASHINGTON CT	LAKE OSWEGO	97035-5211	16,304	0.37
TG-23	21E18AB00504	NAIR MANOJ & SMITA MENON	5310 WASHINGTON CT	LAKE OSWEGO	97035-5211	22,411	0.51
TG-23	21E18AB00600	WIMMER VERNON J	5410 WASHINGTON CT	LAKE OSWEGO	97035-5241	42,296	0.97
TG-23	21E18AB00800	5424 SW WASHINGTON COURT LLC	5424 WASHINGTON CT	LAKE OSWEGO	97035	20,512	0.47
TG-23	21E18AB01000	FREY JEANINE	16808 INVERURIE RD	LAKE OSWEGO	97035-5231	10,350	0.24
TG-23	21E18AB01100	RISCH RUTH MARION	16814 INVERURIE RD	LAKE OSWEGO	97035-5231	10,203	0.23
TG-23	21E18AB01200	FREEMAN KENNETH D & VICTORIA L	16820 INVERURIE RD	LAKE OSWEGO	97035-5231	11,487	0.26
TG-23	21E18AB01300	LITTLEFIELD RUSSELL S	16824 INVERURIE RD	LAKE OSWEGO	97035-5231	14,421	0.33
TG-23	21E18 00300	UNION PACIFIC CORP	NO SITUS	LAKE OSWEGO	97035	1,050,791	24.12
TG-24	21E07DC03501	GALLUCCI BETTY J	5211 SW MADRONA ST	LAKE OSWEGO	97035-4241	12,823	0.29
TG-24	21E07DC03502	OMALLEY RICHARD TRUSTEE	5215 SW MADRONA ST	LAKE OSWEGO	97035-4241	12,824	0.29
TG-24	21E07DC03600	NORRIS TODD & JANEENE CAMPBELL	5133 SW MADRONA ST	LAKE OSWEGO	97035-4239	37,619	0.86
TG-24	21E07DC03700	MCCOY FOAT & COMPANY CPAS PC	5103 SW MADRONA ST	LAKE OSWEGO	97035-4239	21,139	0.49
TG-24	21E07DB07500	QUINTANA SHANE P & DONNA D	5244 SW FIRWOOD RD	LAKE OSWEGO	97035-4228	25,791	0.59
TG-24	21E07DB07600	HEATLY JOHN BERNARD	5220 SW FIRWOOD RD	LAKE OSWEGO	97035-4228	23,654	0.54
TG-24	21E07DB07700	WORTHINGTON RICHARD L & GLENDA	5160 SW FIRWOOD RD	LAKE OSWEGO	97035-4226	23,531	0.54
TG-24	21E07DB07800	WORTHINGTON R L & G OCONNELL- WORTHINGTON	5128 SW FIRWOOD RD	LAKE OSWEGO	97035	37,618	0.86
TG-24	21E07DB07900	WORTHINGTON RICHARD L & GLENDA	5090 SW FIRWOOD RD	LAKE OSWEGO	97035-4224	20,579	0.47
TG-24	21E07DB07902	WORTHINGTON RICHARD & GLENDA	5100 SW FIRWOOD RD	LAKE OSWEGO	97035-4226	8,519	0.20
TG-24	21E07DC03900	DOVE JEFFREY C & MI SUKYI	5031 SW MADRONA ST	LAKE OSWEGO	97035-4237	37,619	0.86
TG-30	21E06 00500	PROPERTY RESERVE INC	3 CENTERPOINTE DR	LAKE OSWEGO	97035-8609	179,315	4.12
TG-30	21E06 00600	ST PAUL PROPERTIES INC	2 CENTERPOINTE DR	LAKE OSWEGO	97035-8618	241,726	5.55
TG-31	21E06BA05100	RAO VINAY & DEEPTHI SIDAVANAHALLI	13026 SIERRA VISTA DR	LAKE OSWEGO	97035-6780	6,735	0.15
TG-31	21E06BA05200	WILLET MICHAEL B	13115 SIERRA VISTA DR	LAKE OSWEGO	97035-6799	7,493	0.17
TG-31	21E06BA05300	WEBB LORRAINE P	13057 SIERRA VISTA DR	LAKE OSWEGO	97035-6783	5,082	0.12
TG-31	21E06BB15500	COTTLE THOMAS D	13212 SW 61ST AVE	LAKE OSWEGO	97035	8,098	0.19
TG-31	21E06BB15600	BECKER JON A & RHODA J	13230 SW 61ST AVE	LAKE OSWEGO	97035	8,037	0.18
TG-32	21E06BD00105	JOHNSON PAUL K & DEBORAH W	5637 SOUTHWOOD DR	LAKE OSWEGO	97035-6733	6,676	0.15

Tree Grove Number	Tax Lot ID	Owner	Property Address	City	ZIP Code	Parcel Area (sf)	Parcel Area (acres)
TG-32	21E06BD00106	ELOVITZ ANDREA N & MITCHELL S	5655 SOUTHWOOD DR	LAKE OSWEGO	97035-6733	5,495	0.13
TG-32	21E06BD00108	WATSON MICHAEL B & ERIN D	5666 GRAND OAKS DR	LAKE OSWEGO	97035-6735	5,831	0.13
TG-32	21E06BD00109	KATON RONALD M CO-TRUSTEE	5658 GRAND OAKS DR	LAKE OSWEGO	97035-6735	5,943	0.14
TG-32	21E06BD00110	BHARGAVA VARUN TRUSTEE	5646 GRAND OAKS DR	LAKE OSWEGO	97035-6735	6,375	0.15
TG-32	21E06BD00111	KLITZKE RAMON A II	5632 GRAND OAKS DR	LAKE OSWEGO	97035-6735	7,705	0.18
TG-32	21E06BD00112	PACIONI KENNETH G & LILLIAN LEE	5626 GRAND OAKS DR	LAKE OSWEGO	97035-6735	9,809	0.23
TG-32	21E06BD00200	WOODS BARRY T	5608 GRAND OAKS DR	LAKE OSWEGO	97035-6735	8,728	0.20

**Removal of RC District
Designation From TG-23**



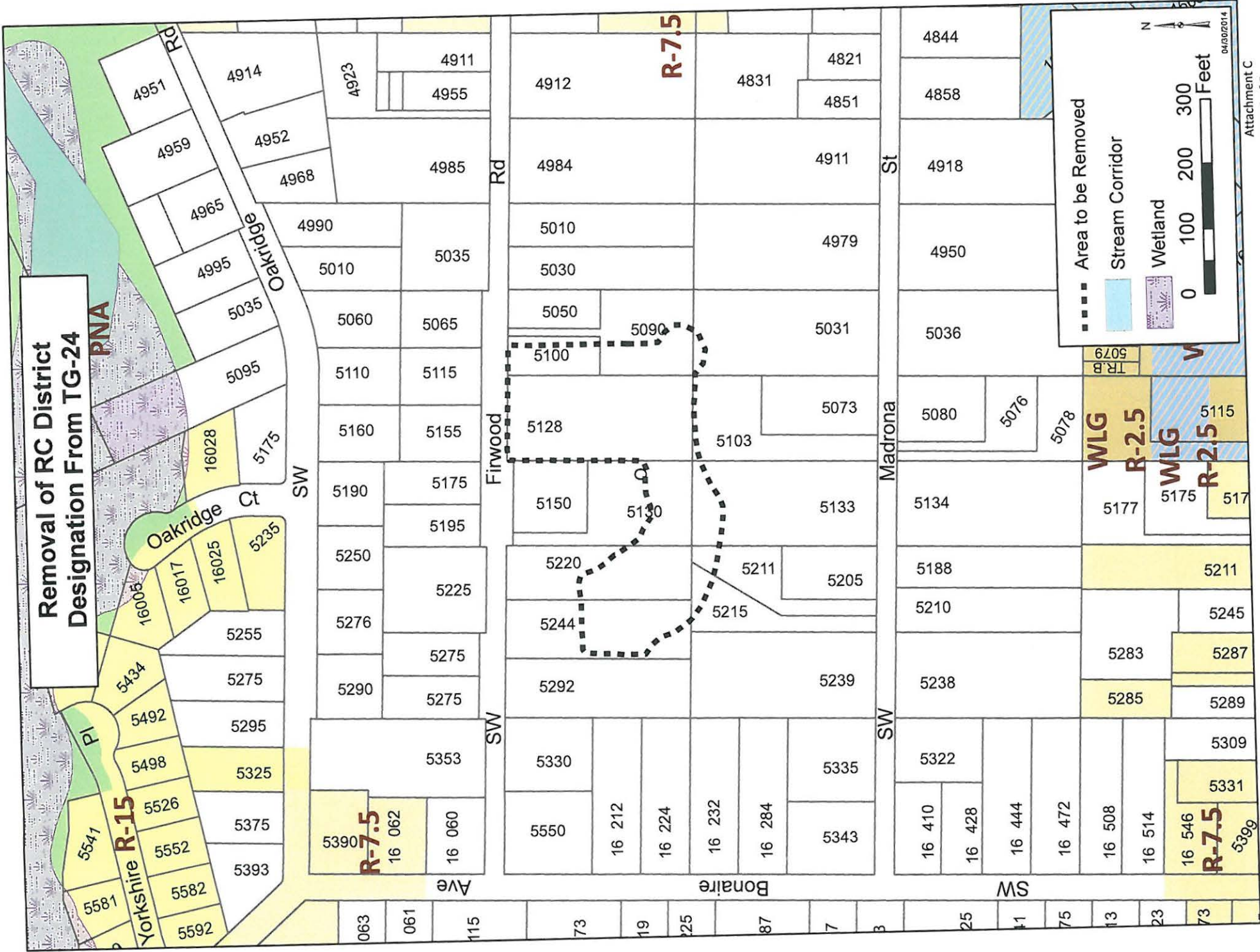
Legend:

- Area to be Removed
- Tree Grove
- Tree Grove Delineation
- Wetland
- Wetland Delineation

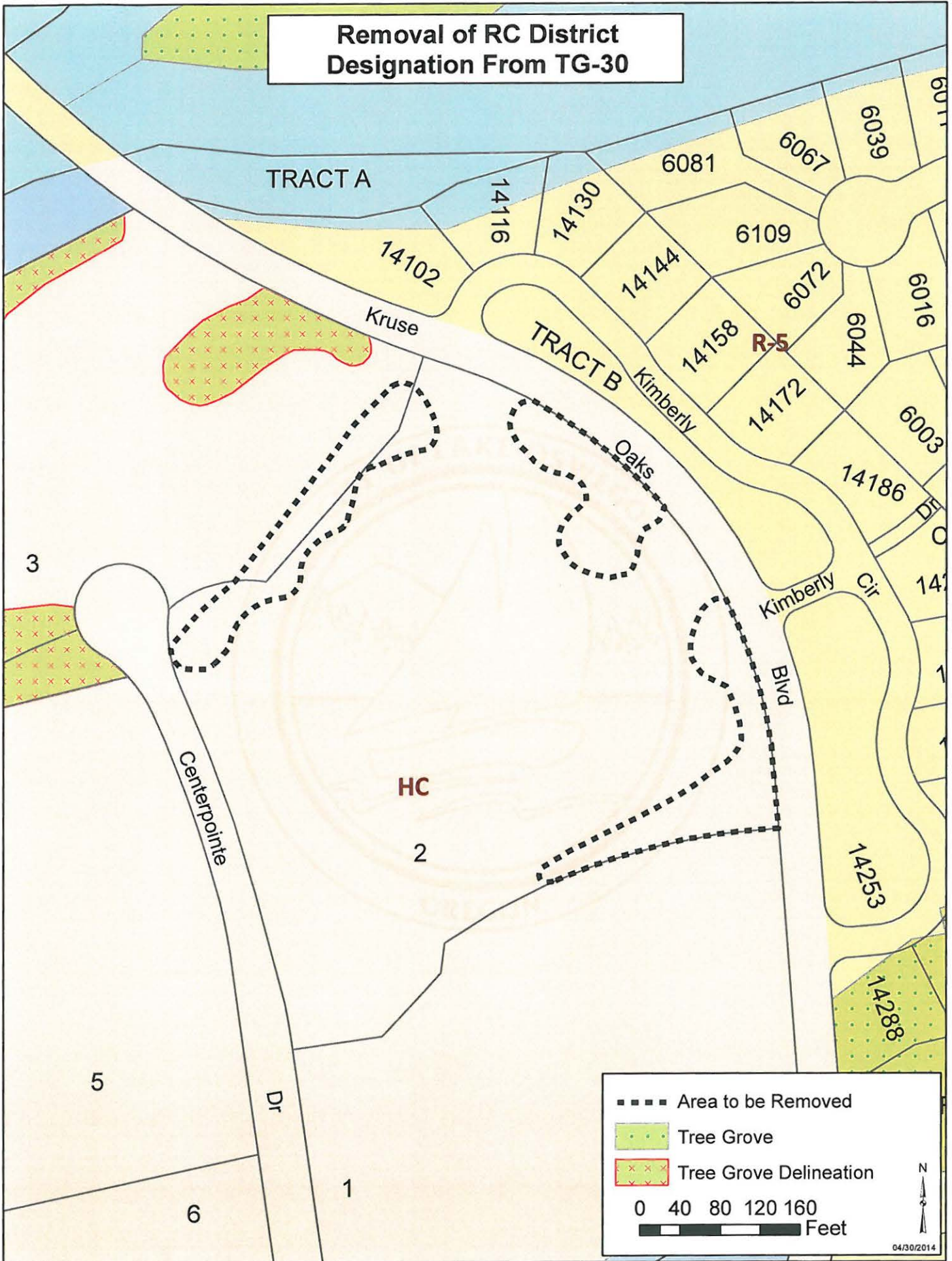
0 50 100 150 200 Feet

04/30/2014

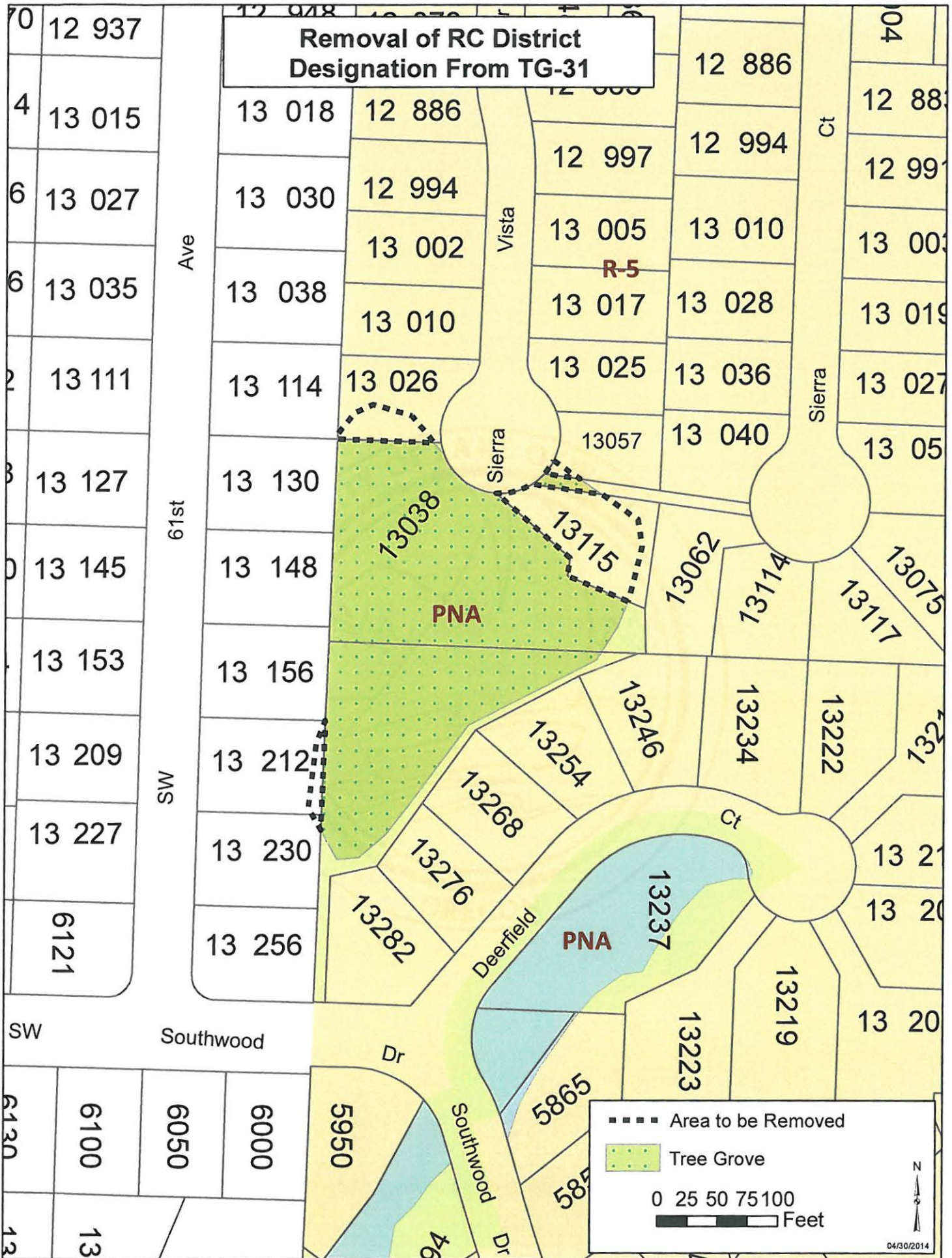
Removal of RC District Designation From TG-24

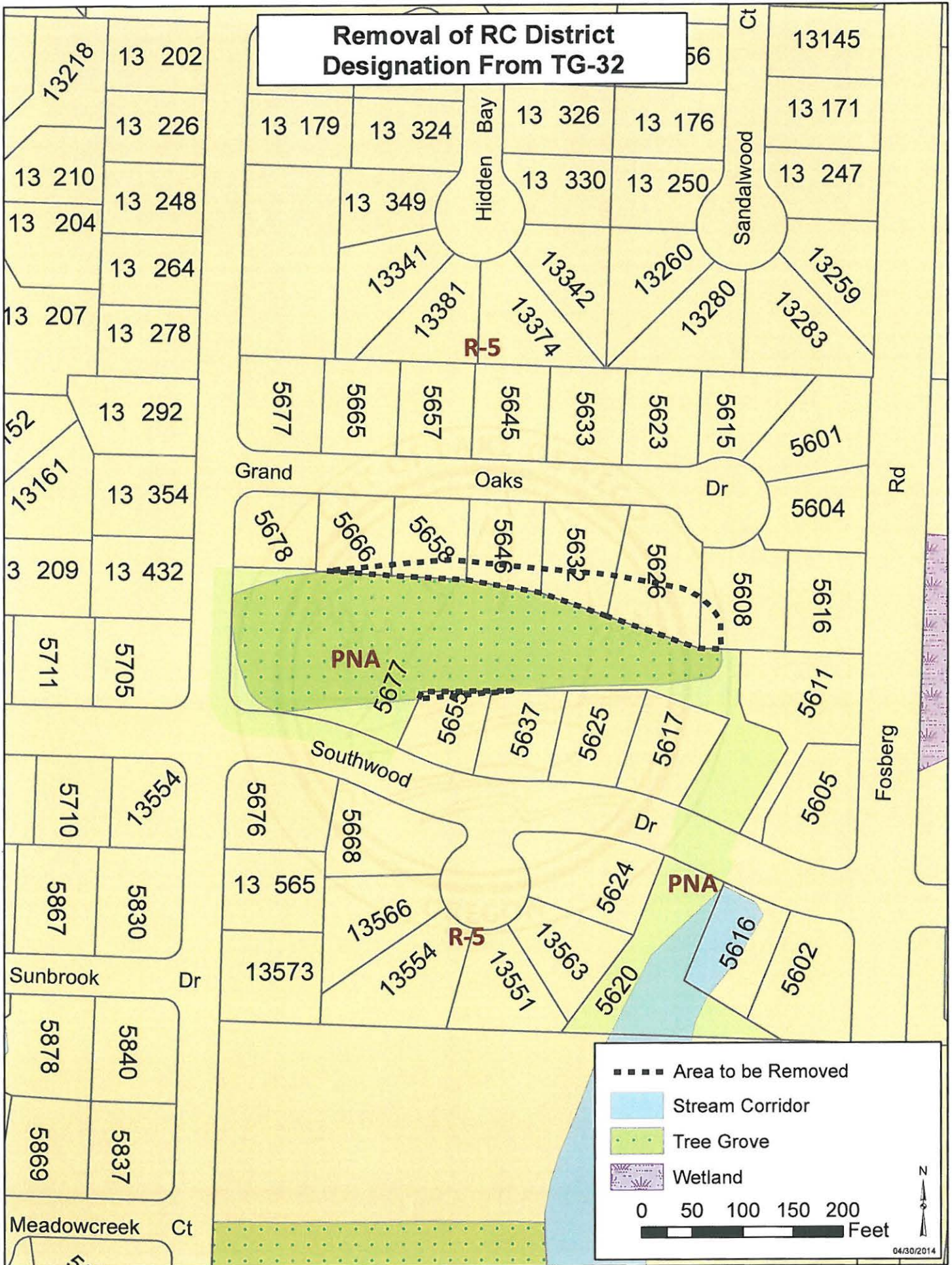


Removal of RC District Designation From TG-30



04/30/2014





Removal of RC District Designation From TG-32

Hidden Bay

Sandalwood Ct

Grand Oaks Dr

Fosberg Rd

Southwood Dr

Sunbrook Dr

Meadowcreek Ct

13 202
13 226
13 210
13 204
13 207
13 292
13 354
3 209
5711
5705
5710
5867
5830
5878
5840
5869
5837

13 179
13 324
13 326
13 176
13 330
13 250
13 349
13341
13381
13374
13342
13260
13280
13259
13283
5677
5665
5657
5645
5633
5623
5615
5601
5678
5666
5658
5646
5632
5626
5608
5616
5611
5605
5676
5668
13 565
5624
5625
5619
5617
5609
5605
13566
13554
13551
13563
5620
5616
5602
13573

13145
13 171
13 247
13259
13283
5604
5616
5611
5605
5609
5602