



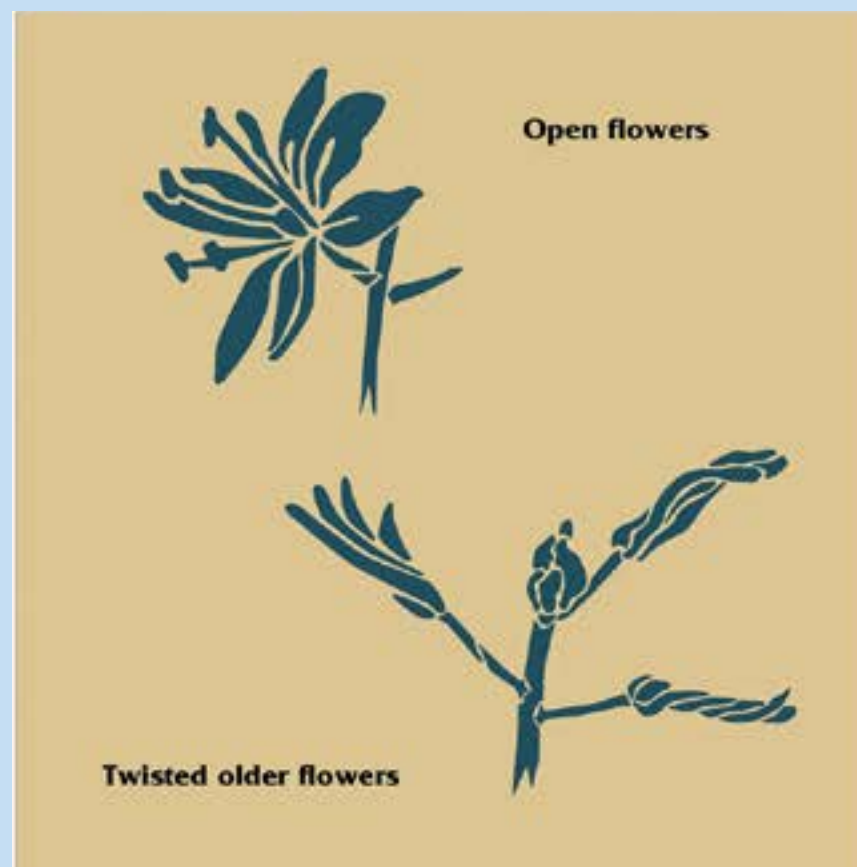
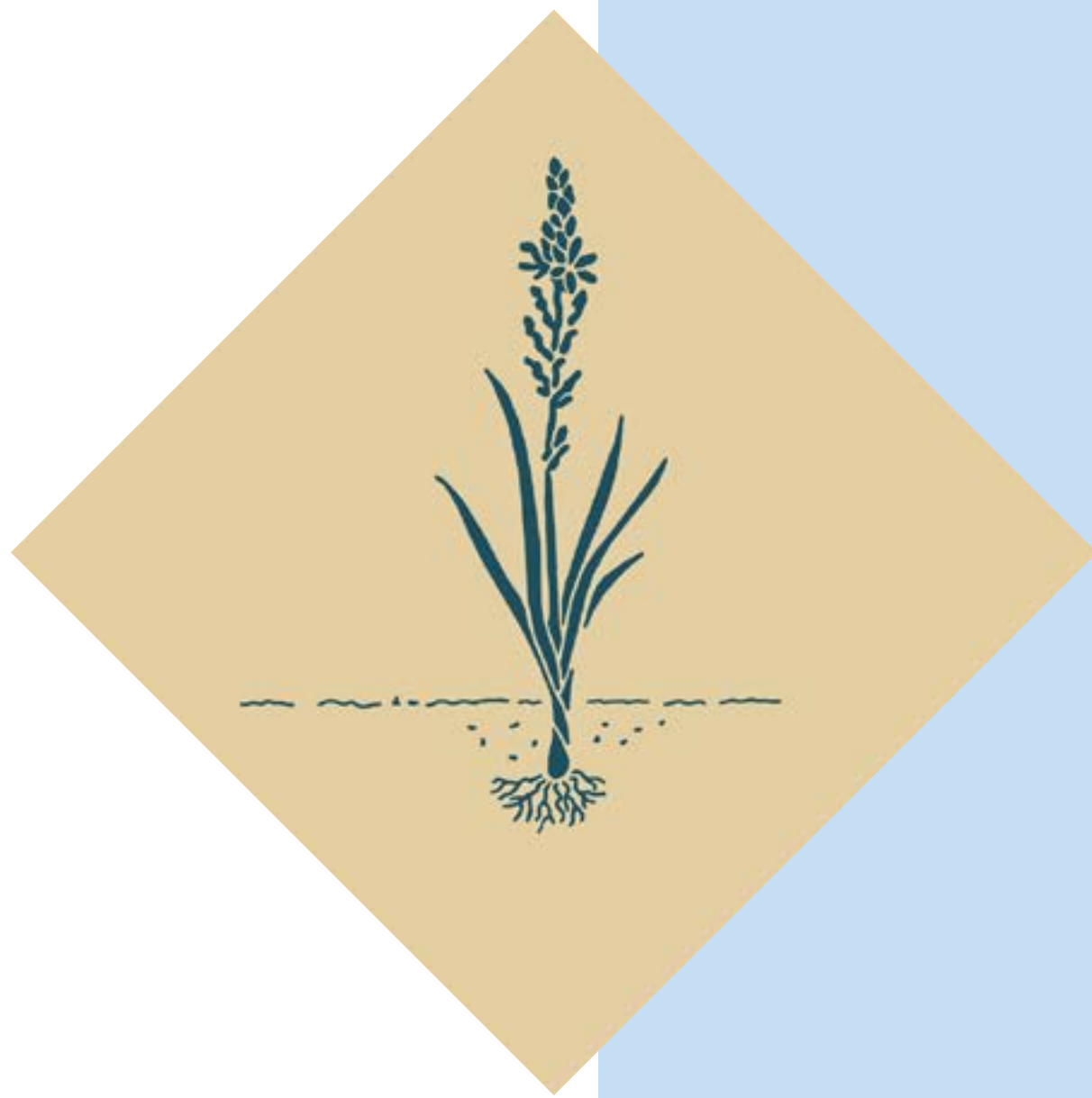
Transportation Crossover

By the Transportation Crossover Team:

Betsy Wolfston, Susan Applegate, Michael DeHaven, Niki Harris,
Victory Builders, Star Construction.

A large, etched mural on the north embankment where Interstate 5 crosses the Canoe Canal portrays a river scene honoring traditional Kalapuya culture. Five handcrafted tiles border the bottom edge of the mural, depicting elk, deer, blooming Camas, a plank house and a wolf. Canoe Canal Path users and runners on Pre's Trail will enjoy a stunning view as they pass through.

The mural is scheduled to be completed this year and the tiles will be installed next summer.

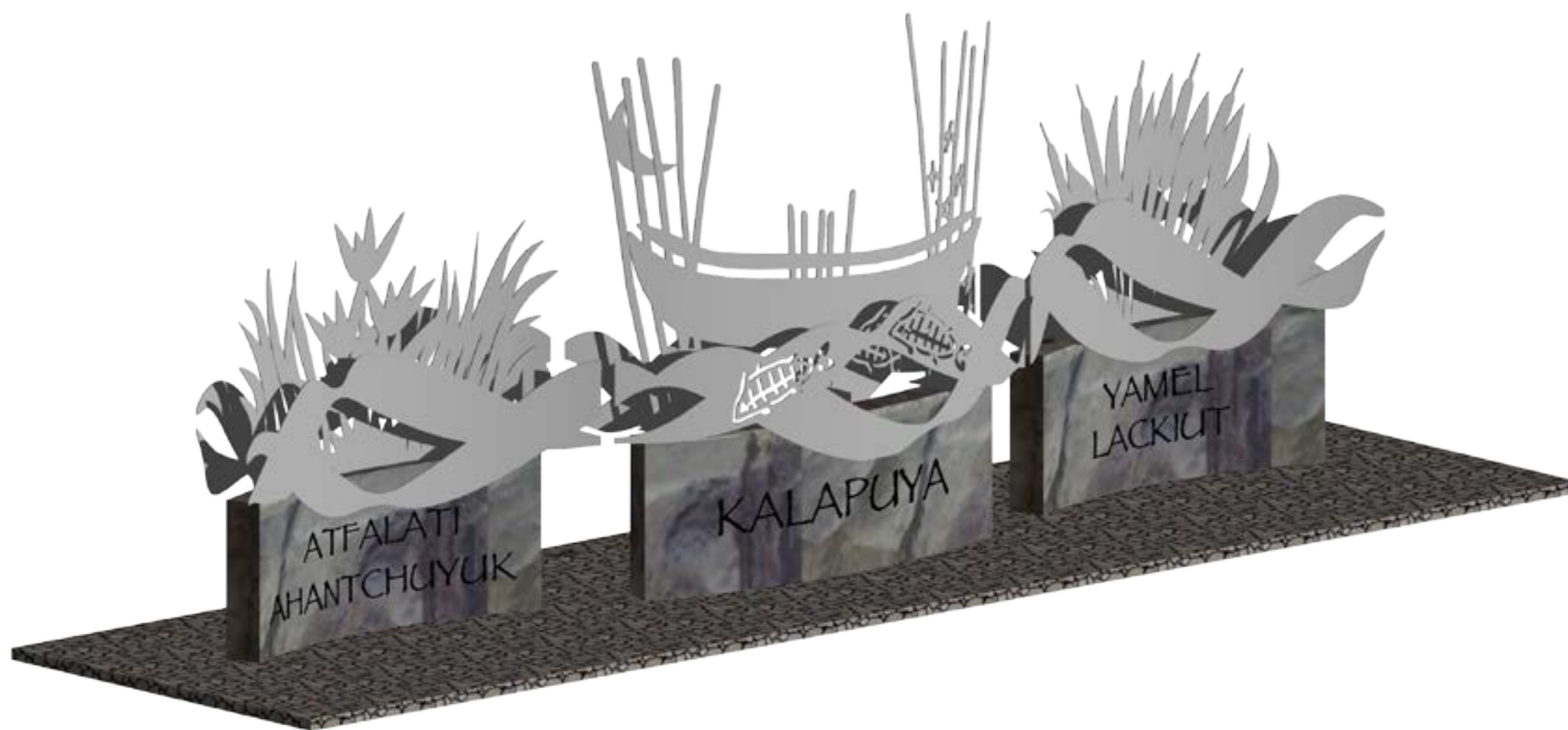


Blue Camas Tiles

By Litus LLC.

Fifteen handcrafted two-foot square tiles symbolize the life cycle of the blue camas. Installed on the south embankment under Interstate 5 along the Canoe Canal Path, the Blue Camas Tiles pay tribute to the splendor and significance of the native species, while providing an informative attraction for path users.

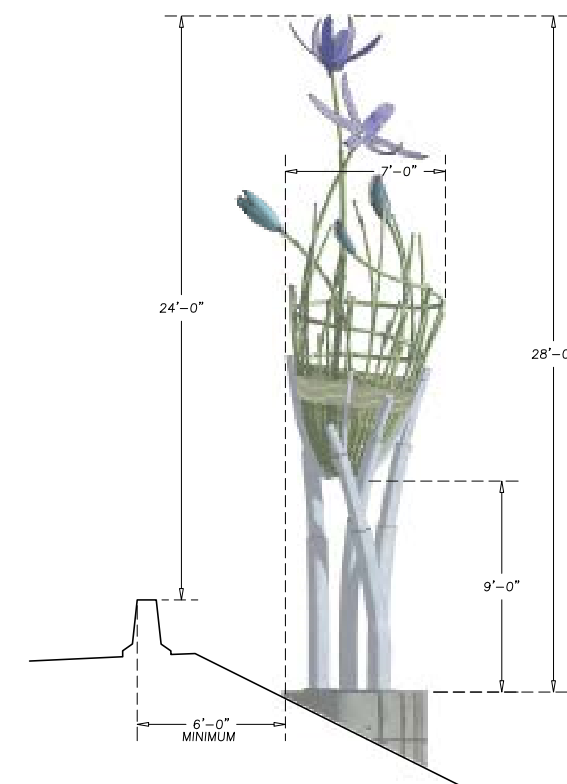
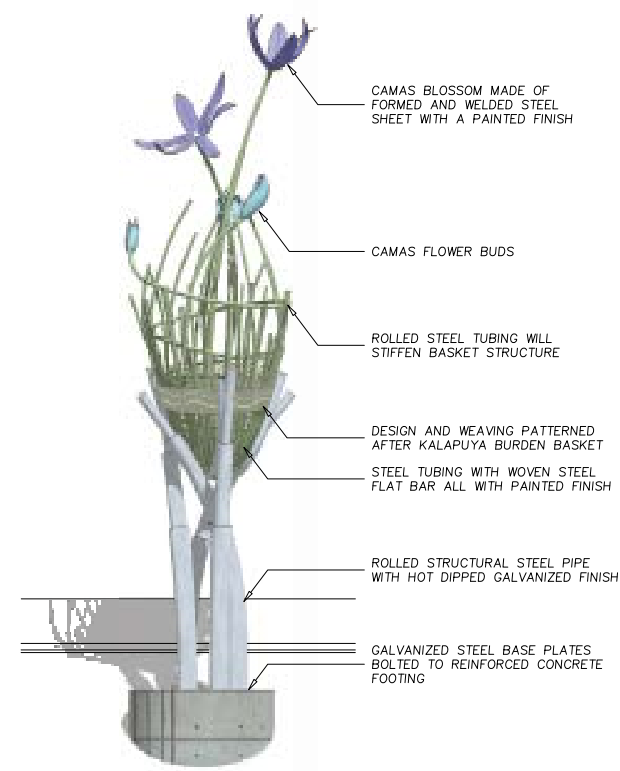
The tiles will be positioned and installed alongside the path this summer.



River

By the Lillian Pitt Team.

Installed in the Interstate 5 median north of the Whilamut Passage Bridge, the River piece depicts a canoe above a graceful wave in a setting of camas plants and cattails. Each of three sections contains Kalapuya words etched into its base. The magnificent sculpture featuring bronze highlights stands above the bridge deck, allowing travelers to safely experience it.

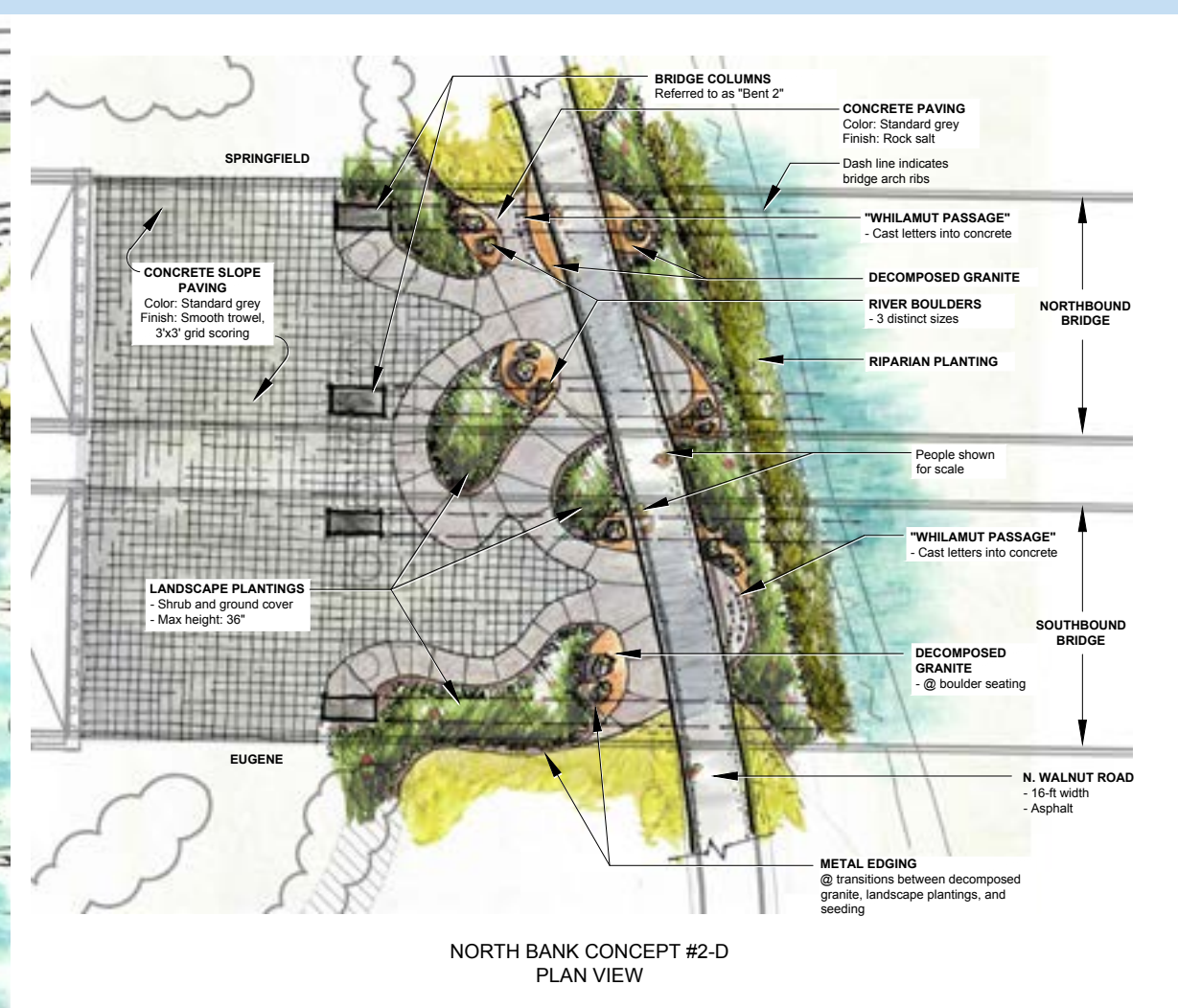
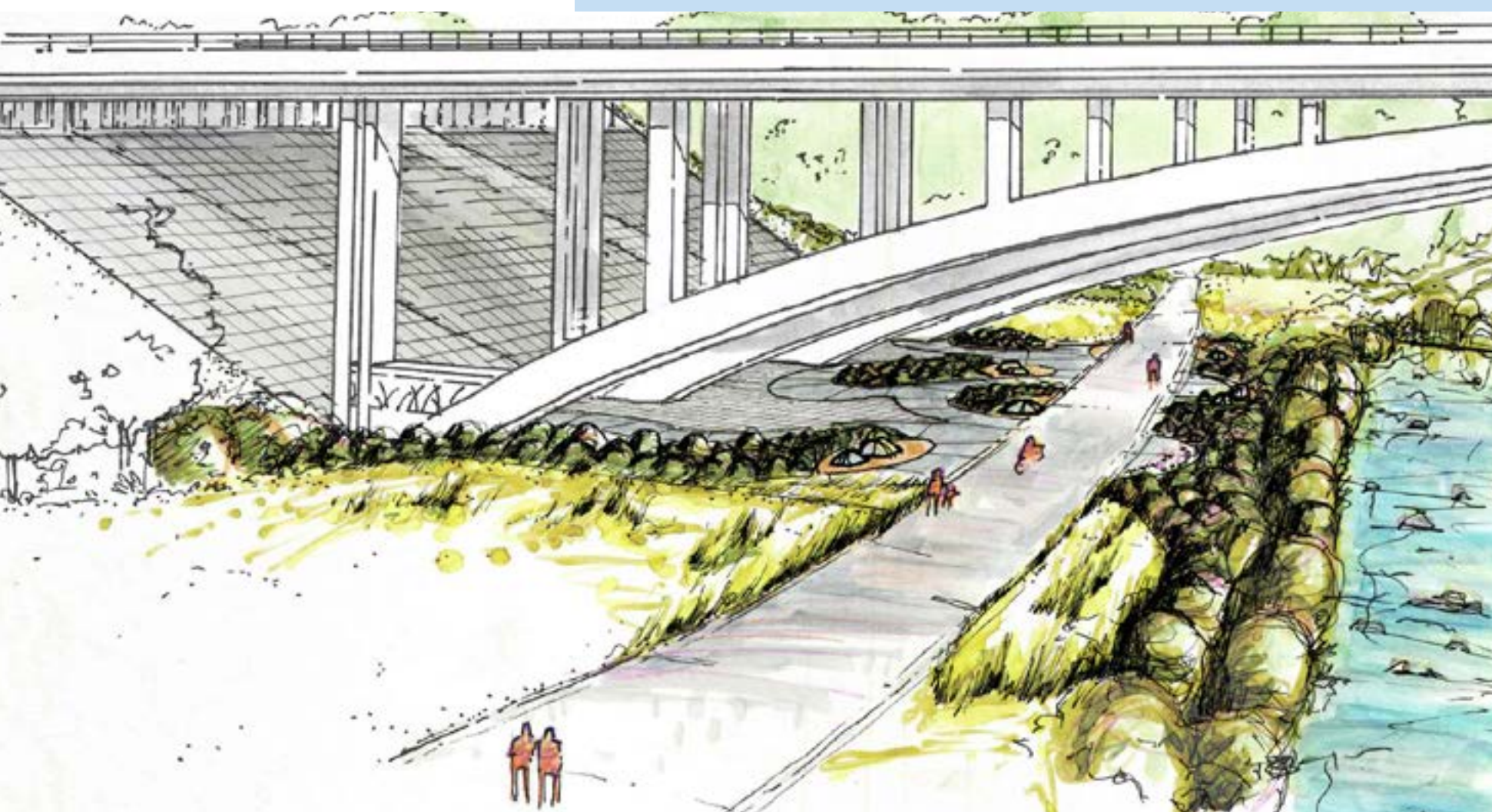


Camas Basket

By rhiza A+D.

Camas Basket shows Kalapuya basketry filled with fibrous reeds and camas stems capped by blue camas blossoms. Located west of southbound Interstate 5, north of the Canoe Canal bridge, a large steel camas basket will be supported by four cantilevered steel columns, complete with camas stems and blossoms.

Work on the foundation will begin after traffic is switched to the new northbound bridge. Camas Basket is anticipated to be completed this fall.



North bank

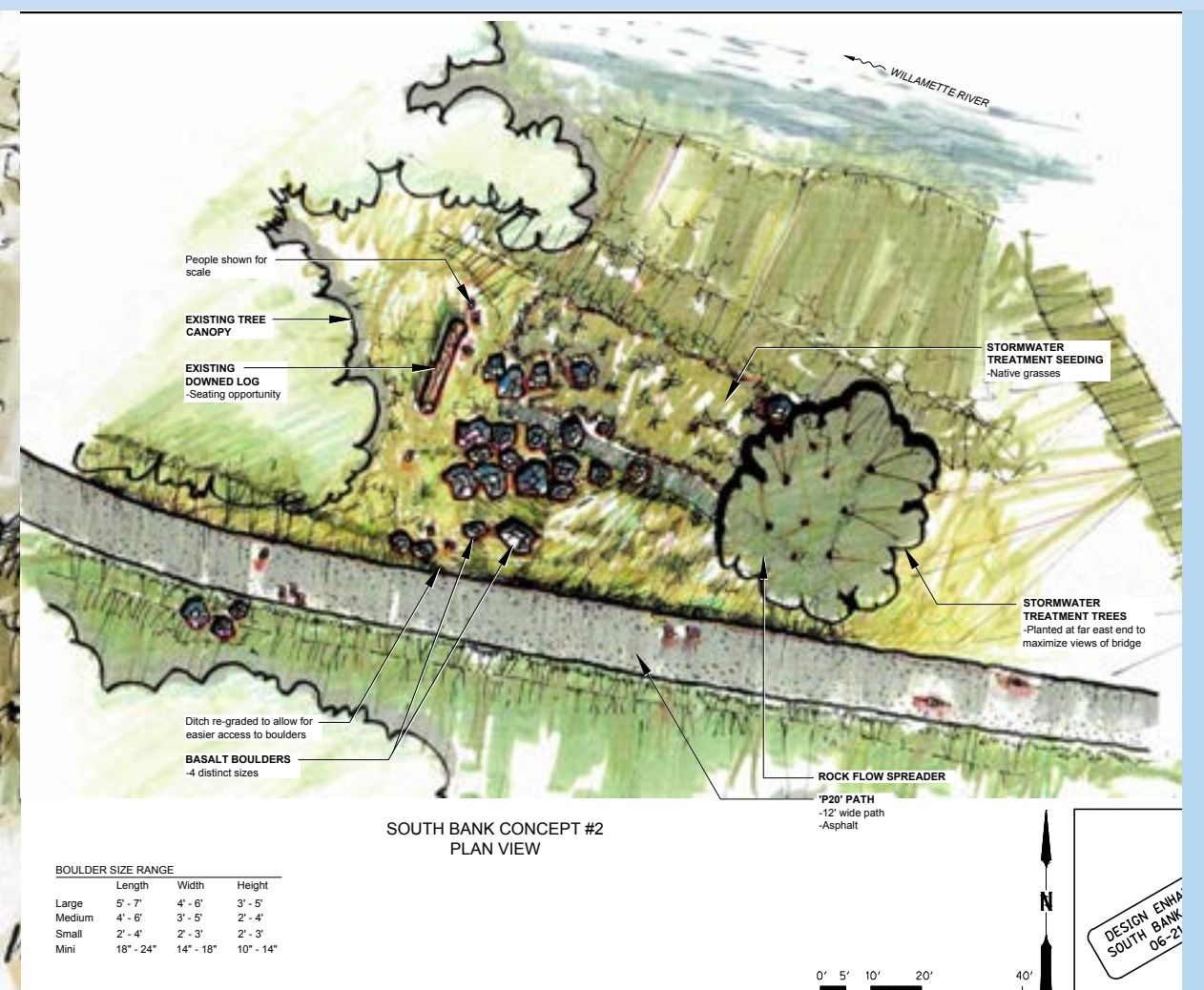
of the Whilamut Passage Bridge

A joint effort by ODOT's project team, Eugene Parks and Open Space, Willamalane Park & Recreation District and the Design Enhancement Steering Committee.

Standard slope paving that will be used on the north bank of the Willamette River under the new Whilamut Passage Bridge will be accented with custom designs, offering natural seating and viewing areas, as well as native landscaping.

Situated next to the north bank pedestrian path, runners, walkers and cyclists will have a peaceful and picturesque stopping place under the graceful arches.

The team has collaborated to ensure an attractive landscape that accommodates long-term safety and maintenance requirements. The enhancements are scheduled to complete next year.



Stream restoration and south bank

of the Whilamut Passage Bridge

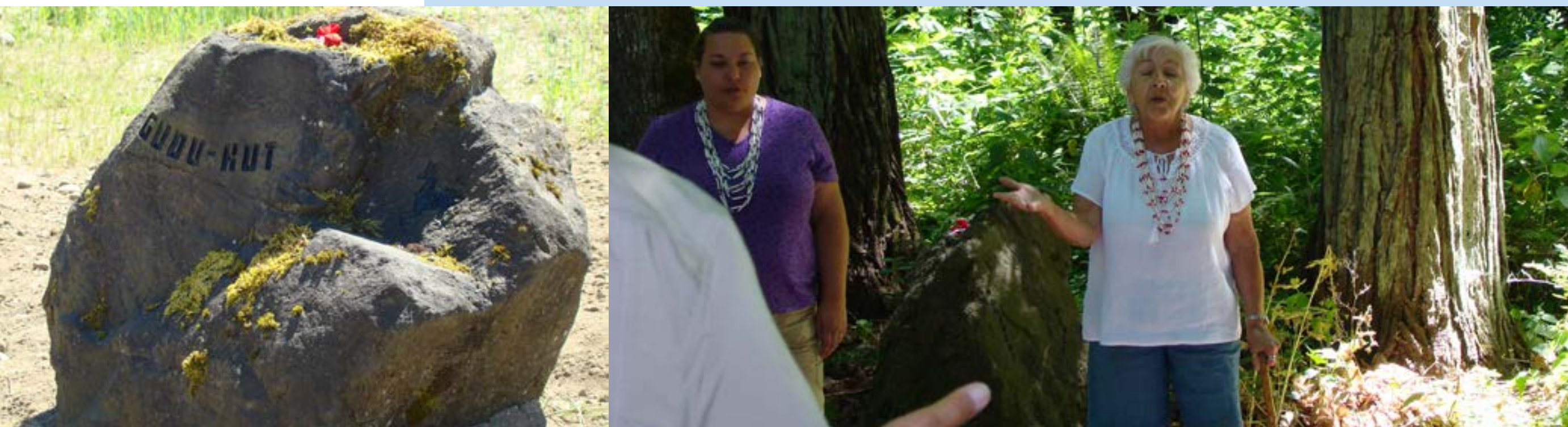
A joint effort by ODOT's project team, Eugene Parks and Open Space, Willamalane Park & Recreation District and the Design Enhancement Steering Committee.

To gain access for bridge construction, the project team temporarily relocated the existing fish passage on the south bank of the Willamette River and will create a better habitat for fish and other stream life with a full restoration of the stream.

The landscaping team will also plant native species and place natural seating areas offering path users a view of the graceful Whilamut Passage Bridge and nearby interpretive displays.

Work on the south bank is scheduled to be complete next summer.





The Confederated Tribes of the Grand Ronde

The Whilamut Passage theme, developed by the Community Advisory Group, honors the native Kalapuya people. It incorporates words, phrases and images that encompass the bridge's many users, its surroundings and the area's rich cultural history and geography.

Reflected in the new bridge name, Whilamut Passage Bridge, the Oregon Department of Transportation continues to work closely with The Confederated Tribes of Grand Ronde to incorporate this theme throughout the project.

Community members, the tribes and the Oregon Department of Transportation have collaborated on many projects, including the official naming ceremony, opening celebrations and Talking Stone dedications. The teamwork continues to shape the design enhancements and interpretive displays that will tell their story for generations to come.



Time capsule project

Memories created today by local school children will be preserved for generations to come inside the new Whilamut Passage Bridge.

Four elementary schools [NAMES OF SCHOOLS] near the project created time capsules filled with student creations and keepsakes to be placed inside the base of the bridge's arches.

Hamilton Construction and the Oregon Department of Transportation wanted to educate students about building bridges and thought this would be a fun way to do it.

Students finished their time capsules last school year and they will be placed in the bridge later this summer. The capsules will remain safe and dry, to be recovered in 75 to 100 years.



Whilamut Natural Area Restoration

Managed by Eugene Parks and Open Space.

Teams from the Community Involvement and Long-term Ownership Strategy (CILOS) will participate in the restoration of 3.5 acres of land in the Whilamut Natural Area. They will restore the Willamette Valley upland and prairie habitat by removing non-native vegetation and planting native species.

Fourteen local schools, working in groups of 20 to 40 students per school, will complete the project over three years. Ongoing education and awareness is an important aspect of this project.





ODOT Transportation Safety Division

The Transportation Safety Division provides information, direct services, grants and contracts to the public, partner agencies and organizations.

Transportation Safety Programs include:

- Bicyclist Safety
- Driver Education
- Emergency Medical Services
- Grantee Information
- Impaired Driving
- Motorcycle Safety
- Pedestrian Safety
- Police Traffic Services
- Roadway Safety
- Safe and Courteous Driving
- Safety Belts
- Safe Communities
- Safe Routes to School
- Traffic Records/Data
- Vehicle Equipment Standards
- Work Zone Safety
- Youth Safety



I-5 Willamette River

Bridge Project

Eugene & Springfield

WHILAMUT
P A S S A G E B R I D G E



Built in 1961, the first Interstate 5 Willamette River Bridge bordered the cities of Eugene and Springfield and provided a critical link for moving freight and people on the I-5 corridor.

In 2002, shear cracks were identified in the bridge beams, resulting in weight limits that detoured heavy haul trucks to central Oregon, 200 miles out of their way. ODOT opened a temporary bridge in 2004 as an interim solution to keep the route open until a new bridge could be built.

As part of the Oregon Transportation Investment Act III, funds were dedicated by the 2003 Oregon Legislature to replace the Willamette River Bridge. The bridge replacement project moved forward in November 2008 when the Federal Highway Administration issued a “Finding of No Significant Impact,” based on an environmental assessment conducted by ODOT. Construction work began in May 2009.

Over the next four years, a massive work bridge was built, the decommissioned bridge and temporary detour bridge were dismantled and the new Whilamut Passage Bridge constructed – all ahead of schedule and under budget.

Design enhancements

The seven design enhancements help ODOT fulfill its promise to the community to build a beautiful bridge project that serves as a gateway between the Willamette Valley and southwestern Oregon.

All of the design enhancement artist teams are from Oregon. They employ local craftspeople to help build their pieces.

ODOT reserved a portion of the original design enhancement budget to maintain these works and required that they be built with long-lasting, low-maintenance materials that resist graffiti.

Local residents on the Community Advisory Group and Design Enhancement Steering Committee have volunteered thousands of hours to ensure the bridge design and enhancements honor the history, heritage and longtime use of the crossing — from the area's first residents, the Kalapuya, to commuters and freight haulers on I-5 today.



I-5

Willamette River

Bridge Project

Eugene & Springfield

WHILAMUT
P A S S A G E B R I D G E



Thank you!

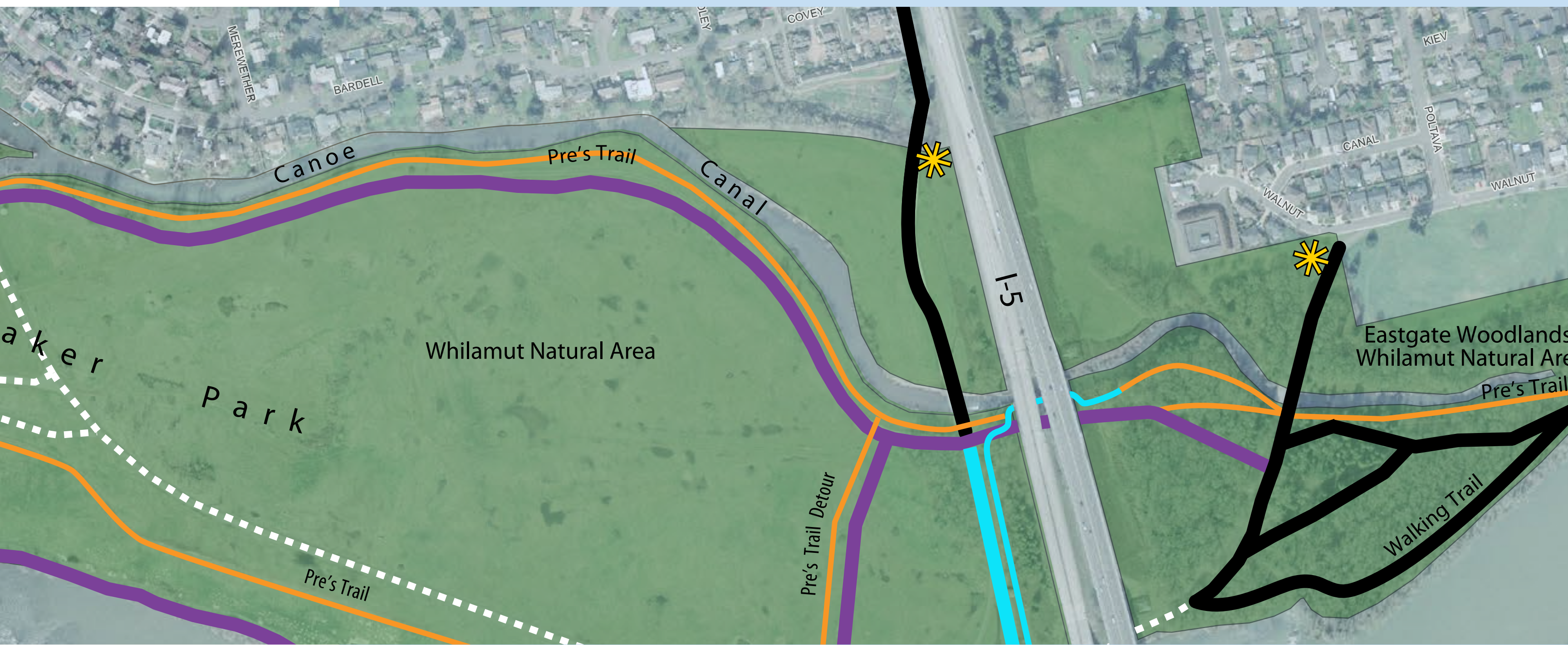
From the Oregon Department of Transportation

The Oregon Department of Transportation thanks its many valued project partners and contributors.

As the largest bridge replacement in Oregon yet, the Interstate 5 Willamette River Bridge project would not have been possible without the long-term partnerships and collaboration with the Community Advisory Group, Design Enhancement Steering Committee, Bridge Naming Committee, contractors and subcontractors, neighboring jurisdictions, local businesses, environmental experts, concerned citizens and special-interest groups.

Thank you for your contribution and dedication!





Self-guided tour maps

Grab a self-guided tour map and find information stations throughout the park to learn more about the Interstate 5 Willamette River Bridge Project.



WHILAMUT

P A S S A G E B R I D G E



Check out the new bridge

Take a walk on top of the new northbound Whilamut Passage Bridge before it opens to traffic later this month.

Enjoy a beautiful view of the river, a special look at the bridge and an up-close peak at the first design enhancement to be installed.

Stair access only. You must be at least 16 years of age and wear closed-toe shoes. (No high heels.)



I-5

Willamette River

Bridge Project

Eugene & Springfield

WHILAMUT
P A S S A G E B R I D G E



**Senior &
disabled
parking
only**

SHUTTLE SERVICE AVAILABLE

I-5

Willamette River

Bridge Project

Eugene & Springfield

WHILAMUT
P A S S A G E B R I D G E



Overflow parking

I-5

Willamette River

Bridge Project

Eugene & Springfield

WHILAMUT
P A S S A G E B R I D G E



**Bike
valet
available**