

Wildland Fire hazard, Risk, & Mitigation Plan
Wildland Fire hazard, Risk, & Mitigation Plan

2006 update

Table of Contents

| | |
|---|------------|
| <i>Distribution Page</i> | <i>I</i> |
| <i>Introduction, Plan Development Process</i> | <i>II</i> |
| <i>Acknowledgement Page</i> | <i>III</i> |
| <i>Original Signature Page</i> | <i>IV</i> |
| <i>2006 Up-date Signature Page</i> | <i>V</i> |

Page

| | |
|---|--------------|
| <i>National Fire Plan Wildland Urban Interface Definition</i> | <i>1-5</i> |
| <i>Wildland Urban Interface Mapping Collaborative Strategy</i> | <i>6-8</i> |
| <i>Lemhi County Wildland Urban Interface Identification and mapping</i> | <i>9-10</i> |
| <i>Past Fire History</i> | <i>11-16</i> |
| <i>Wildfire Economic Impact</i> | <i>17-24</i> |
| <i>Lemhi County Wildfire Hazard, Risk, Mitigation Strategy</i> | <i>25-30</i> |
| <i>Action Plan Maintenance</i> | <i>31-34</i> |
| <i>Lemhi County Fire Protection Resources, Boundary Map</i> | <i>35-36</i> |
| <i>Maps</i> | <i>37-40</i> |
| <i>Project Pictures</i> | <i>41-46</i> |

| | |
|--|--|
| <i>Lemhi County Evacuation Plan</i> | |
| <i>North Fork Evacuation Plan</i> | |
| <i>Pine Creek Ranch Evacuation Plan</i> | |
| <i>Tower Creek Structure Protection Plan</i> | |
| <i>Hull Creek Residential area Evacuation Plan</i> | |

| | |
|--------------------------|--|
| <i>Appendix</i> | |
| <i>2005 Plan Up-date</i> | |
| <i>Purposed Projects</i> | |

Distribution of Mitigation Plan

| | |
|--|-----|
| Lemhi County Emergency Services | (1) |
| City of Salmon | (1) |
| City of Leadore | (1) |
| Leadore Public Library | (1) |
| Salmon City Public Library | (1) |
| Lemhi County Planning and Zoning, County Commissioners, | (1) |
| Fire Districts, | (2) |
| Volunteer Fire Departments | (4) |
| Bureau of Land Management | (1) |
| Idaho Bureau of Disaster Services, | (1) |
| Idaho Department of Lands. | (1) |

A Comprehensive Mitigation Plan

For the people of Lemhi County.

Usable strategies for hazardous fuels identification,
High-risk areas, fuels reduction, and community education.

Planning Process Lemhi County Wildland Fire Interagency Group

The Lemhi County Wildland Fire Interagency Group is a committee comprised of a wide variety of organizations and members of the community. The committee was established to collect information on fire wildland fire hazard risks in Lemhi County and the surrounding infrastructure area. Information was collected and reviewed by the Wildland Fire Hazard, Risk Committee, on high impact area for probability of wildland fires. After reviewing past fire history of Lemhi County, the committee was able to start working on the Wildland Fire Hazard Risk and Mitigation Plan.

Through a collaborative effort from the Fire Departments Emergency response, BLM, Forest Service, County Commissioners, and citizens of the county, the group identified specific needs to assist in make the plan a working plan and to form a blue print in aiding and assisting in the implementation of the fuels reduction , education, and preparedness,/fire suppression response for the citizens of Lemhi County.

This Plan has been designed with a format to have the ability to reduce or expand. As in nature and wildland fire that is continually changing, Lemhi County's Wildland Fire Mitigation Plan has the ability to change.

Lemhi County, Idaho involved the following organizations and groups to formulate a Hazard risk and mitigation plan to address those portions of the county where populated areas are vulnerable to the threat of wildland fire. The following groups were involved:

**Lemhi County Commissioners, Lemhi County Fire Protection District #1
USDA Salmon/Challis National Forest Service, The Bureau of Land
Management, Lemhi County Emergency Services ,Lemhi County LEPC
Idaho Department of Lands, Salmon City Fire Department, North Fork Fire
Protection District, Elk Bend Fire Protection District, Leadore Fire
Department, Williams Lake Fire Department, Williams Lake Subdivision
Citizens Group Bureau of Homeland Security
City of Leadore Mayor, Lemhi County Wildland Urban Interface**

LEMHI COUNTY MITIGATION PLAN

Acknowledgement Page

We would like to thank the following agencies and individuals for their participation and assistance in the preparation of this document.




| | |
|----------------|--|
| Lynn Bennett | Forest Ecologist, U.S Forest Service, Salmon Field Office |
| Henry Logsdon | GIS Computer Specialist, U.S. Forest service, Salmon Field Office |
| Kathy Seaberg | GIS specialist, U.S Forest Service, Salmon Field Office |
| Jim Tucker | Fire Use Specialist, Bureau of Land Management, Salmon Field Office |
| Rick Snyder | Lemhi County Commissioner, Leadore Fire department |
| Mike England | North Fork Fire District #1, Fire Chief |
| Mike Warner | Salmon Volunteer Fire Department, and Assistant Chief |
| Robert Perry | Salmon Volunteer Fire Department, Fire Chief |
| Keith Amar | Williams Lake Fire department, Fire Chief |
| Jeff Knudson | Bureau of Land Management, Wildland Fire Specialist, Salmon Field Office |
| Janet Nelson | Lemhi County Emergency Services, Coordinator |
| Robert Cope | Lemhi County Commissioner |
| Paul Sever | Bureau of Land Management Fire Dispatch, Salmon |
| Ed Gibson | Lemhi County Fire Protection District #1, Chairman |
| John Dickens | Lemhi County Local Emergency Planning Committee |
| Joe Proksch | Lemhi County Commissioner |
| Liz Davy | U.S. Forest Service, Fuels Specialist, North Fork Field Office |
| Mike Clement | Bureau of Disaster Services, Northeastern Area Field Officer |
| Steve Smart | High Country Resource Conservation and Development (RC&D) |
| Matt Hightree | Idaho Department of Fish and Game, Salmon Field Office |
| Marry Miller | Sunset Heights Subdivision, Representative |
| Rick Hafenfeld | U.S.Forest Service Operation Specialist, Salmon Field Office |
| Fritz Cluff | Bureau of Land Management Fire |
| Jay Townsend | City of Salmon, Administrator |
| Mike Ries | City of Leadore, Mayor |
| Scott Farler | Elk Bend Fire Department |
| Karin Drnjevic | FireWise, Fuels Reduction, Emergency Services Assistant Coordinator |

The Lemhi County Wildland Fire Hazard, Risk, & Mitigation Plan has been reviewed, and it is my/our decision to approve the Planning Committees request to authorize implementation of this plan.

Signature Page:

The Lemhi County Wildland Fire Hazard, Risk, & Mitigation Plan has been reviewed, and it is my/our decision to approve the Planning Committees request to authorize implementation of this plan.

FOR THE BOARD OF LEMHI COUNTY COMMISSIONERS:

| | |
|--|-------------------------------|
|  _____ Lemhi County Commissioner | <u>4-12-04</u> Date & Time |
|  _____ Lemhi County Commissioner | <u>4-12-04</u> Date & Time |
|  _____ Lemhi County Commissioner | <u>4-12-04</u> Date & Time |

2006 Up-Date Signature Page:

| Department | Position | Signature |
|---|-----------------|------------------|
| Lemhi County Commissioner | | _____ |
| Lemhi County Commissioner | | _____ |
| Lemhi County Commissioner | | _____ |
| City of Salmon | | _____ |
| City of Leadore | | _____ |
| USDA Salmon/Challis National Forest Service | | _____ |
| The Bureau of Land Management | | _____ |
| Lemhi County Emergency Services/WUI | | _____ |
| Lemhi County Sheriffs | | _____ |
| Lemhi County LEPC | | _____ |
| Idaho Department of Lands | | _____ |
| Salmon City /LCFPD#1Fire Department | | _____ |
| North Fork Fire Protection District | | _____ |
| Elk Bend Fire Protection District | | _____ |
| Leadore Fire Department | | _____ |
| Williams Lake Fire Department | | _____ |
| Bureau of Homeland Security | | _____ |

Wildland Urban Interface

Since the development and implementation of the National Fire Plan, a marked increase in attention to fuel treatment in the wildland urban interface has occurred. However, there appears to be some confusion or differing interpretation as to what the wildland urban interface actually is and what constitutes reportable wildland urban interface projects. The following information reinforces existing wildland urban interface definitions and clarifies valid wildland urban interface fuel treatment projects:

Definition – Wildland Urban Interface:

Wildland Urban Interface currently has two accepted definitions:

- **“the Urban Wildland Interface community exists where humans and their development meet or intermix with wildland fuel.”**
This definition is found in the Federal Register/Vol. 66, No. 3/Thursday, January 4, 2001/Notices; and “Fire in the West, The Wildland/Urban Interface Fire Problem”, which is the “A Report for the Western States Fire Managers”, September 18, 2000.
- **“the line, area, or zone where structures and other human development meet or intermingle with undeveloped wildland or vegetative fuel.”**
This definition is found in the NWCG Glossary and the 10-Year Comprehensive Strategy Implementation Plan.

Based on the existence and use of the above-stated definitions, there is no further need to redefine or create definitions of the wildland urban interface.

Interface

To quote from Paul Summerfelt, the City of Flagstaff Fuel Management Officer; "The 'interface,' where it is and what it is, has long been a matter of discussion among land managers and wildland fire professionals. With the release of the National Fire Plan in the fall of 2000, and subsequent congressional appropriations designed to treat hazardous fuels, new parties have joined the debate. The reality that few understand, and that fewer are willing to accept, is that the interface is big, and can easily encompass several jurisdictions and ownerships. It extends for miles, includes substantial public land and all of it needs attention and treatment..."

Paul Summerfelt prefers a wider definition based on community values. “We look at the interface, and where we want to work is miles outside our community. Because while the flames may not threaten us directly in town, all those other things will be affected.” He referred to tourism, recreation, and wildlife as examples.

How to best protect communities from fire is a matter of some controversy, beginning with how WUI is defined. The Southwest Forest Alliance considers WUI "areas where urban fuels directly meet forest fuels. This is primarily within 20-60 meters (66-200 feet) of houses, where fire most directly threatens the house, and where a defensible zone can be developed”

wildlife, and recreational opportunities accessible from their own back doors. Unfortunately forests and fires come as a package deal. This is a fact of life for people living in the “Wildland Urban Interface”.



Homes in the community of Gibbonsville north of Salmon are embedded in moderate to dense forest area.

People enjoy living in the forest with trees,

wildlife, and recreational opportunities accessible from their own back doors. Unfortunately forests and fires come as a package deal. This is a fact of life for people living in the “Wildland Urban Interface”.



Aftermath of the 2003 Tobias wildland fires.

A growing body of research suggests that “the only effective home protection treatment is treatment in, on, and around the house; homeowners must be responsible for protecting that property” (Nowicki 2001, p. 1:3). U.S. Forest Service research scientist, Jack Cohen stated that “home ignitions are not likely unless flames and firebrand ignitions occur within 40 meters [131 feet] of the structure; the WUI fire loss problem primarily depends on the home and its immediate site”.

President Bush’s “Healthy Forest Initiative” proposes to protect communities from wildfire by allowing more commercial logging and bypassing certain environmental regulations. However, a panel of forestry experts and firefighters have concluded that logging forests outside the wildland-urban interface will do little to protect communities from fire (Walker and Schardt 2002).

It is clear that Congress expected the Secretaries of the Interior and Agriculture to develop a definition by which urban wildland interface communities could be identified. Further research into this directive and reading of the Federal Register, revealed that the Secretaries, in fact, based their resulting definition on the definition presented in “Fires in the West – The Wildland/Urban Interface Fire Problem A Report to the Council of Western State Foresters”.

The following material outlines the resulting Federal Register definition.

Federal Definition:

- Federal Agencies establishing the definition consulted with the States, Tribes, local governments, and other interested parties; made a few modifications to the definition in the report (Fires in the West). The resulting definition is as follows:
- There are three categories of communities that meet this description. Generally, the Federal agencies will focus on communities that are described under categories 1 and 2. For purposes of applying these categories and the subsequent criteria for evaluating risk to individual communities, a structure is understood to be either a residence or a business facility, including Federal, State, and local government facilities. Structures do not include small improvements such as fences and wildlife watering devices.

Category 1

Interface Community. The Interface Community exists where structures directly abut wildland fuels. There is a clear line of demarcation between residential, business, and public structures and wildland fuels. Wildland fuels do not generally continue into the developed area. The development density for an interface community is usually 3 or more structures per acre, with shared municipal services. Fire protection is generally provided by a local government fire department with the responsibility to protect the structure from both an interior fire and an advancing wildland fire. An alternative definition of the interface community emphasizes a population density of 250 or more people per square mile.

Category 2

Intermix Community. The Intermix Community exists where structures are scattered throughout a wildland area. There is no clear line of demarcation; wildland fuels are continuous outside of and within the developed area. The development density in the intermix ranges from structures very close together to one structure per 40 acres. Fire protection districts funded by various taxing authorities normally provide life and property fire protection and may also have wildland fire protection responsibilities. An alternative definition of intermix community emphasizes a population density of between 28-250 people per square mile.

Category 3

Occluded Community. The Occluded Community generally exists in a situation, often within a city, where structures abut an island of wildland fuels (e.g., park or open space). There is a clear line of demarcation between structures and wildland fuels. The development density for an occluded community is usually similar to those found in the interface community, but the occluded area is usually less than 1,000 acres in size. Fire protection is normally provided by local government fire departments.

Evaluating Risk

Preliminary Criteria for Evaluating Risk to Communities:

The Secretaries were required to publish in the Federal Register an updated list of Urban Wildland Interface communities within the vicinity of Federal lands that are at high risk from wildfire. The following communities are located in Lemhi County, which are listed in the Federal Register.

| | |
|--------------|------------|
| Carmen | North Fork |
| Cobalt | Salmon |
| Gibbonsville | Shoup |

Risk Factor 1: Fire Behavior Potential

Situation 1 (High)

In these communities, continuous fuels are in close proximity to structures. The composition of surrounding fuels is conducive to crown fires or high intensity surface fires. There are steep slopes, predominantly south aspects, dense fuels, heavy duff, prevailing wind exposure and/or ladder fuels that reduce fire fighting effectiveness. There is a history of large fires and/or high fire occurrence.

Situation 2 (Moderate)

In these communities, there are moderate slopes, broken moderate fuels, and some ladder fuels. The composition of surrounding fuels is conducive to torching and spotting. These conditions may lead to moderate fire fighting effectiveness. There is a history of some large fires and/or moderate fire occurrence.

Situation 3 (Low)

In these communities, grass and/or sparse fuels surround structures. There is infrequent wind exposure, flat terrain with little slope and/or predominantly a north aspect. There is no large fire history and/or low fire occurrence. Fire fighting generally is highly effective.

Risk Factor 2: Values At Risk

Situation 1 (Interface Communities)

This situation most closely represents a community in an urban interface setting. The setting contains a high density of homes, businesses, and other facilities that continue across the interface. There is a lack of defensible space where personnel can safely work to provide protection. The community watershed for municipal water is at high risk of being burned compared to other watersheds within that geographic region. There is a high potential for economic loss to the community and likely loss of housing units and/or businesses. There are unique cultural, historical or natural heritage values at risk.

Situation 2 (Intermix and Occluded Communities)

This situation represents an intermix or occluded setting, with scattered areas of high-density homes, summer homes, youth camps, or campgrounds that are less than a mile apart. This situation would cover the presence of lands at risk that are described under State designations such as impaired watersheds, or scenic byways. There is a risk of erosion or flooding in the community if vegetation burns.

Risk Factor 3: Infrastructure

Situation 1 (Extremely Vulnerable Community)

In these communities, there are narrow dead end roads, steep grades, one way in and/or out routes, no or minimal fire fighting capacity, no fire hydrants, no surface water, no pressure water systems, no emergency operations group, and no evacuation plan in an area surrounded by a fire-conducive landscape.

Situation 2 (Vulnerable Community)

In these communities, there are limited access routes, moderate grades, limited water supply, and limited fire fighting capability in an area surrounded by scattered fire-conducive landscape.

Situation 3 (Prepared Community)

In these communities, there are multiple entrances and exits that are well equipped for fire trucks, wide loop roads, fire hydrants, open water sources (pools, creeks, lakes), an active emergency operations group, and an evacuation plan in place in an area surrounded by a fireproof landscape.

Summary

The task at hand is to establish a definition regarding what constitutes Wildland Urban Interface areas in and adjacent to the Salmon-Challis National Forest and agree to identify the resulting areas and to graphically display this data on a GIS layer. We have been given plenty of leeway to make this decision at the community level and with little direction to guide the process. Advocate caution against a radical independent approach when determining the definition. Five basic principles have been suggested to keep in mind when establishing the definition. These principles are as follows:

- 1) Assure the definition that we adopt is defensible.
- 2) A logical analysis process for determining Wildland Urban Interface areas accompanies the definition.
- 3) The definition serves as a useful tool and aid for focusing the limited resources allocated to the Forest Hazard Fuels Programs.
- 4) The definition and any resulting analysis process be based on a set of established criteria rather than emotional or intangible feelings.
- 5) The results of this work and accompanying analysis are graphically displayed on a GIS produced map.

Basis found for using the federal definition are that it is broadly written and local concerns can easily be addressed through local interpretation of its provisions.

*****Wildland Urban Interface Mapping Collaborative Strategy

D. Sapsis/B. Bahro Briefing Paper, July 2002

Background

The National Fire Plan has five key objectives, one being a directed program for reducing wildfire risk to communities near and adjacent to federal lands. Part of the original analysis mandated that the individual states create a list of communities at risk from fire coming off federal lands. California developed the list based on GIS data of population density and a synthetic measure of fire threat (see CDF FRAP 2001). While the list of communities fulfilled the original request at defining the scope of the wildland urban interface (WUI) issue, it has become evident that a more detailed spatial picture of WUI is required, and that additional mapping and analytical work delineating WUI is required for planning and priority setting.

Objective

Develop a spatial map product for landscape level planning that clearly defines areas constituting human habitation (communities) and an associated “zone of influence” on those communities. Included in the analysis are spatial data characteristics associated with fire risk – estimated fire behavior, fire history, and logical map features that support fire suppression activities.

Discussion

Community attributes are defined primarily by structure (primary residence) density classes, obtained by clipping census split-blocks to private lands, and populating with the full structure count for that block. This migration process better rectifies actual habitation, particularly in low-density areas where the original census polygon includes a large amount of public lands. The density value for the area is then defined based on the clipped polygon’s area. California Department of Forestry and Fire Protection’s (CDF), Fire and Resource Assessment Program (FRAP) is currently conducting the migration process on the 2000 census data.

Proposed Density Classes and Naming Convention

| Density Class Table 1 (Being used in Sierra Nevada Framework) | |
|---|-------------------------------------|
| Wildland | Less than 1 structure per 40 acres. |
| Rural | 1 per 5 acres -- 1 per 40 acres. |
| Interface | 1 per 0.5 acres -- 1 per 5 acres. |
| Urban | Greater than 1 house per 0.5 acres. |

| Density Class Table 2 (Being used in CDF FRAP's Forest and Range Assessment) | |
|--|-------------------------------------|
| Wildland | Less than 1 structure per 20 acres. |
| Rural | 1 per 5 acres -- 1 per 20 acres. |
| Interface | 1 per 1 acre -- 1 per 5 acres. |
| Urban | Greater than 1 house per 1 acre. |

Proposed methods for defining Zone of Influence around WUI

Two options exist for defining zone of influence:

- 1) Strict Euclidean distance buffer to determine core defense area, and adjacent threat area. This method was used in the Sierra Framework, where the defense zone was the immediate ¼ mile buffer around areas meeting the WUI criteria, and the threat zone an adjacent 1 ¼ mile outer buffer zone. Some isolated small areas of low population density may be filtered out of the WUI buffering routine, to avoid allocating a large zone of influence to small concentration of structures. The filtering model used in the Framework eliminated making buffer zones for areas less than 160 acres and in the lowest density class still considered as WUI (in this case that was up to one house per 40 acres).
- 2) A variable buffer width defined based on a cost function routine in GIS where cost (resistance to width) is determined based on fire behavior attributes such as expected rate of spread or crown fire potential. To generate the fire behavior index, we would use FLAMMAP in conjunction with the statewide surface fuel coverage and characteristic weather regimes to create a grid output of key fire behavior indices. We would then apply the cost function buffering to the index, where more intense behavior results in wider buffer distances. We would likely normalize the cost routine to bracket total buffer distances to 1 – 3 miles.

Both routines would be used to ; 1) develop a zone of influence around communities and 2) give priority to higher populations in the defense zones (the area closest to the structures). That is, when buffers overlap, priority is given to the inner buffer over the outer buffer, and areas adjacent to higher population density are given higher priority over buffers from lower population density. Hence, an outer buffer area arising from an urban area would take priority over an outer buffer coming from a lower density interface area, but would not take priority over an inner buffer area coming from a lower density area (Figure 1).

DRAFT: WUI and zone of influence

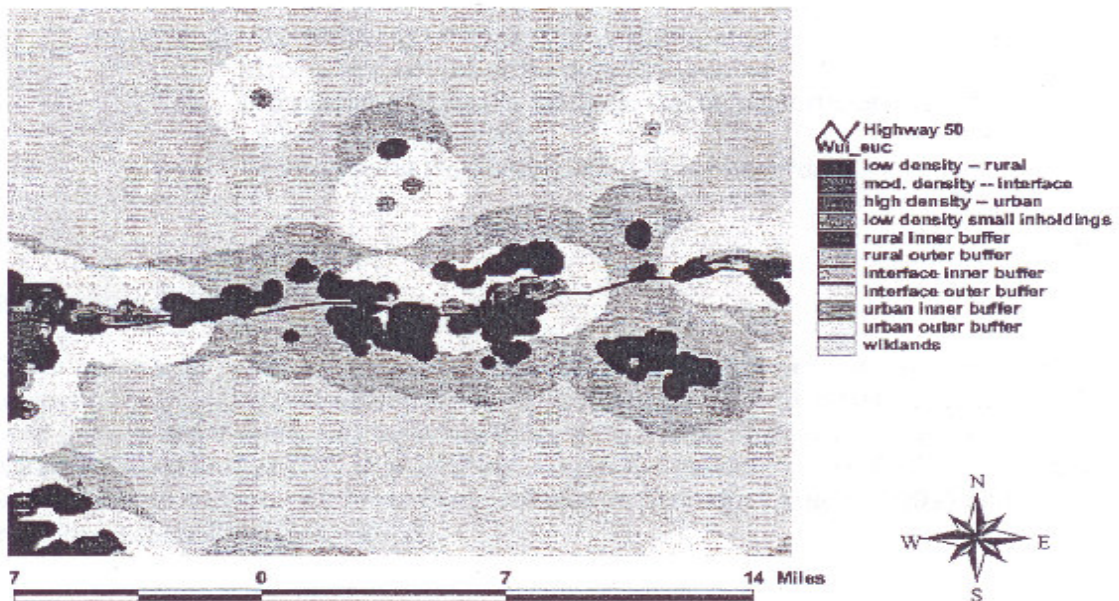


Figure 1. Example of WUI by density and Euclidean distance derived buffered zone of influence.

Community Protection: This Discussion is based on the idea that a community can be defined as a collection of many tangible and intangible parts that are held in common, including both developed areas and wildlands. (Finney 2002 in press)

Examples of community attributes may include:

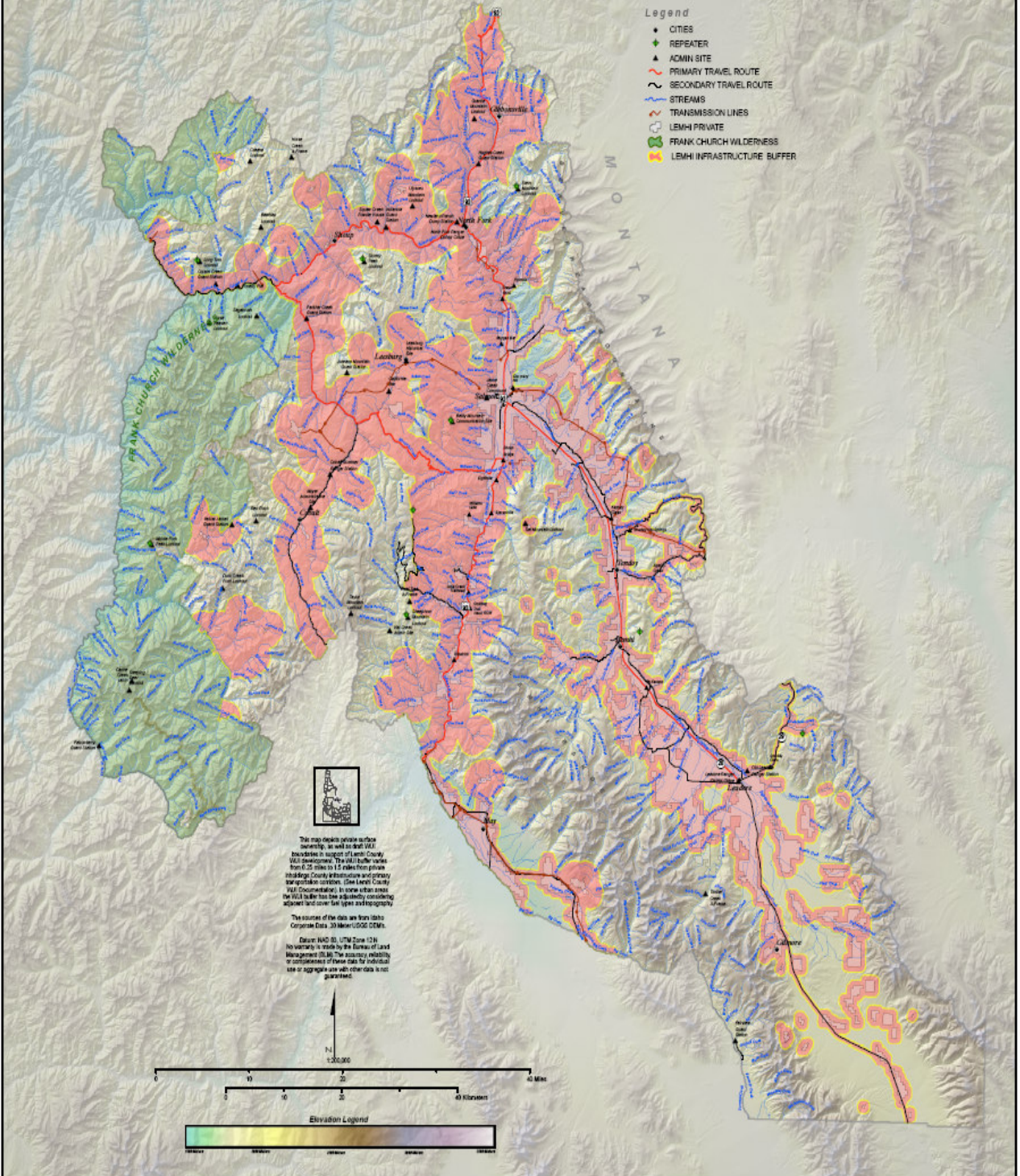
- Structures, neighborhoods and business
- Infrastructure (roads, bridges, dams, airport, etc)
- Lifestyles and Economy
- Environment (including the natural hazards)



No matter what definition of the Wildland Urban Interface is used, all refer to a geographical area where two diverse systems - forest and urban - meet and interact, giving rise to conflicts concerning management of natural resources.

Lemhi County Wildland Urban Interface (WUI) Planning Map

- Legend**
- CITIES
 - ◆ REPEATER
 - ▲ ADMIN SITE
 - PRIMARY TRAVEL ROUTE
 - - - SECONDARY TRAVEL ROUTE
 - ~ STREAMS
 - TRANSMISSION LINES
 - ◻ LEMHI PRIVATE
 - ◻ FRANK CHURCH WILDERNESS
 - ◻ LEMHI INFRASTRUCTURE BUFFER



This map depicts private surface ownership, as well as state WUI boundaries in support of Lemhi County WUI development. The WUI buffer varies from 0.25 miles to 1.5 miles from private landowners' structures and primary transportation corridors. Given Lemhi County WUI characteristics, it is more likely that the WUI buffer has been adequately considering adjacent land cover, use types and topography.

The source of the data are from Idaho Corporate Data, 30 Meter USGS DEMs.

Source: NAD 83, UTM Zone 12N
 No warranty is made by the Bureau of Land Management (BLM). The accuracy, reliability, or completeness of these data for individual use or aggregate use with other data is not guaranteed.

Lemhi County Wildland Urban Interface Identification

The Lemhi County Wildland Hazardous Fuels Reduction Committee was tasked with the assignment of identifying, and mapping the county boundary for Wildland Urban Interface.

This process was accomplished through several meetings of the working committee.

With the collaboration of the County Commissioners, Bureau of Land Management, Salmon -Challis National Forest Service, Leadore Fire Department, Lemhi County Fire Protection District, Salmon Fire Department, Gibbonsville Fire District, Elk Bend Fire Department, Lemhi County Emergency Services, and Lemhi County Wildland Urban Interface. Through a series of meetings WUI boundaries and map were completed. Using the guidelines identified by the Healthy Forest Act and National Fire Plan the committee developed Wildland Urban Interface criteria and boundaries for Lemhi County.

Due to the complexity of Lemhi County and the ever changing status of fuel load, weather conditions, population and development of properties in the interface areas, the committee unanimously agreed the WUI boundaries will be reevaluated annually, and redefined.

Criteria :

- Human life
- Private properties, with /without structure
- Past Fire History
- Spotting distance
- Fuel density and load
- Fire Behavior
- Historical Starts
- Major drainages
- Fire Regime Condition Class
- Preservation of public areas
- Evacuation routes/ Highways/thruways

Lemhi County was divided into 3 sections.

Section one: North: Tower Creek area to Lost Trail Pass all are East and West of this area including Wilderness; East: all area to county line.

Section two: North: City of Salmon to Tower Creek, South Hwy 93 to Ellis county line, including Pahsimeroi Valley, West: Jesse Creek watershed, East: all area to the county line

Section three: East: City of Salmon, Birch Creek, county line, Northeast to county line, and South to county line.

Due to the high index of all the criteria in defining the WUI boundaries. Identification is as follows. As identified in Lemhi County's original plan the area in all sections one through three will have a 1 ½ WUI buffer line in high index areas. This boundary was established by the following steps.

Section One:

1. Original boundary line to be mapped per GIS mapping at the Forest Service with a 1 ½ mile WUI boundary as mentioned in The Healthy Forest Restoration Act

2. After review of mapped boundary agreed to break the section down to subsection.

*Tower creek (dumpster location) to North Fork, North Fork to the State line. The WUI boundary will remain at 1 ½ mile due to steep terrain, spotting distance, population, identified evacuation areas, evacuation routes, beetle epidemic, heavy fuels, timber and limited access.

*North Fork to Shoup and the road ending at the river will remain 1 ½ mile buffer zone.

Criteria: steep terrain, spotting distance, population, identified evacuation areas, evacuation routes, beetle epidemic, heavy fuels, timber and limited access. This area is also subject to massive debris flows after forest fires, which have closed the evacuation routes.

This was mapped and reviewed at following meeting.

3. The mapping was reviewed and accepted by Committee and Lemhi County Commissioners.

Section two:

1. Original boundary line to be mapped per GIS mapping at the Forest Service with a 1 ½ boundary in accordance to The Healthy Forest Restoration Act.

2. After review of mapping, the section was also divided into subsection.

*North Hwy 93 from salmon to Tower creek (dumpster location) on the east side the WUI buffer should be reduced to ¼ mile buffer with a ¼ mile buffer from property lines. To the west side of state highway 93 North the 1 1/2 WUI buffer will remain. This agreement was met with the history of the fire behavior during the Finster Fire.

*Jesse Creek, City of Salmon west; Jesse Creek watershed must be included in the 1 ½ mile WUI buffer and to extent 1 ½ mile outside the watershed area. The western boundary WUI buffer will be in place 1 ½ mile outside the watershed at the hydrographic divide to prevent forest fires from reaching within the municipal watershed, road-less area.

* Hwy 93 to Ellis-county line, including Pahsimeroi Valley.

The WUI buffer on State highway 93 South from Salmon to the county line will remain a 1 ½ mile WUI buffer due to the closeness of private property boundaries, terrain, and vegetation. Also the 1 ½ WUI buffer will include the ridge road and/or ridge to the east of Williams Lake and follow along the ridge road and/or ridge to Iron Creek road. Agreement due to, steep terrain, spotting distance, population, beetle epidemic, heavy fuels, timber, and limited access. The Withington Creek fire used as an example for sever fire behavior in this area.

*The Pahsimeroi watershed are WUI buffer will be reduced to ½ mile buffer from private property lines. Due to the fact that the bottom of the valley is a green zone and the grazing practice is in place. However the committee decided that the WUI buffer would be reevaluated in the event that grazing practice ended.

3. Mapping reviewed and accepted by Committee and Lemhi County Commissioners.

Section three:

1. Original boundary line to be mapped per GIS mapping at the Forest Service with a 1 ½ boundary in accordance to The Healthy Forest Restoration Act

2. After review of mapping, the section was also divided into subsections.

*Salmon to Leadore the Old Lemhi Road, (located to the East of state highway 28) going east ¼ mile off the Old Lemhi Road would be the starting point of the ½ mile WUI buffer. There will be a ½ mile WUI buffer from private property line due to the green zone and grazing.

* Salmon to Leadore west side of state highway 28 starting point is at ½ mile and ½ mile WUI buffer from private property lines due to the grazing practice at this time. However the committee decided that the WUI buffer would be reevaluated in the event that grazing practice ended.

*City of Leadore to the county line, starting point be at ½ mile from state highway 28, and ½ mile WUI buffer from private property lines due to the grazing practice at this time. However the committee decided that the WUI buffer would be reevaluated in the event that grazing practice ended.

3. Mapping reviewed and accepted by Committee and Lemhi County Commissioners.

Past Fire History of Lemhi County:

Lemhi County Fire History

Lemhi County will use the Salmon Interface Analysis finding to characterize fire history and fuel conditions/fire risk. The Salmon Interface Ecosystem Analysis Area is located in the landscape that surrounds Salmon, Idaho. The analysis area is approximately 200,000 acres and contains a wide variety of ecosystems, which are reflective of many parts of Lemhi County. In an effort to be consistent with the National Fire Plan and the 10 year Cohesive Strategy, the analysis classified the ecosystems by Fire Regime Groups and Condition Classes (Ref. “Protecting People and Sustaining Resources in Fire Adapted Ecosystems a Cohesive Strategy 2000” The Forest Service Management Response to the General accounting office Report GAO/RCED-99-65 October 13, 2000).

The Fire Regime Groups provide a reference condition regarding how wildfire occurred in the natural landscape prior to European settlement (before 1850). (Ref. Pacific Northwest-General Technical Report. “An Assessment of Ecosystem Components in the Interior Columbia Basin and Portions of the Klamath and Great Basins Volume II”, dated: June 1997).

FIRE REGIME GROUPS

FIRE REGIME GROUP I is made up of dry conifer forested lands at lower to mid-elevations that support Ponderosa pine, Ponderosa and Douglas-fir, Douglas-fir, and Douglas-fir and Lodge-pole Pine trees. Historically, frequent fires of low fire severity characterized these areas, allowing for larger diameter trees growing in mostly open canopy conditions. Crown fires and high severity fires were uncommon.

FIRE REGIME GROUP II is made up of mostly sagebrush grassland ecosystems. Fires would remove the shrub covers and grasses, thereby, allowing forbs to dominate the burned areas until shrubs re-established themselves as the primary vegetation.

FIRE REGIME GROUP III occurs at mid to high elevation forested areas and are dominated by Lodge-pole pine, Lodge-pole pine/Sub-alpine fir and sub-alpine fir forests. Historically, these areas were characterized by fires of low, moderate and high severity with a frequency of 35-100 years or more. A wide range in fuel and forest conditions were common resulting in a diversity of landscape pattern.

FIRE REGIME GROUP IV occurs at high elevation forested areas generally on steep moist slopes and are dominated by Lodge-pole pine, Lodge-pole pine/Sub-alpine fir forests. Historically, these areas were characterized by fires of moderate to high severity with a frequency of 35-100 years or more. A wide range in fuel and forest conditions were common resulting in a diversity of landscape pattern.

FIRE REGIME GROUP V described as fire return frequency greater than 200 years with severe stand replacement, which was generally not present in this portion of Idaho.

The majority of the Wildland/Urban Interface (WUI) in Lemhi County is surrounded by or highly influenced by Fire Regime Groups I and II portions of the landscapes.

Table 1- Fire Regime Frequency Severity Table

| <i>Fire Regime Group</i> | <i>Frequency (Fire return Intervals)</i> | <i>Severity</i> |
|--------------------------|--|----------------------------|
| I | 0-35 years | low severity |
| II | 0-35 years | stand replacement severity |
| III | 35-100 + years | mixed severity |
| IV | 35-100 + years | stand replacement severity |
| V | > 200 years | stand replacement severity |

* Trends are based on preliminary data from Salmon Interface Watershed Assessment (in progress May 2003).

CONDITION CLASS 1 characterizes an ecosystem that has retained most of its natural processes and has vegetation that is in mostly natural size, species and distribution.

CONDITION CLASS 2 are ecosystems that have retained some of their natural processes and have vegetation that moderately reflects natural size, species and distribution.

CONDITION CLASS 3 are ecosystems that have retained little of their natural processes and have vegetation that moderately reflects natural size, species and distribution. Table II- *Condition Class Description*

| Condition Class¹ descriptions | | |
|--|--|--|
| Condition Class | Fire Regime | Example Management Options |
| Condition Class 1 | Fire regimes are within an historical range and the risk of losing key ecosystem components is low. Vegetation attributes (species composition and structure) are intact and functioning within an historical range. | Where appropriate, these areas can be maintained within the historical fire regime by treatments such as fire use. |
| Condition Class 2 | Fire regimes have been moderately altered from their historical range. The risk of losing key ecosystem components is moderate. Fire frequencies have departed from historical frequencies by one or more return intervals (either increased or decreased). This results in moderate changes to one or more of the following: fire size, intensity and severity, and landscape patterns. Vegetation attributes have been moderately altered from their historical range. | Where appropriate, these areas may need moderate levels of restoration treatments, such as fire use and hand or mechanical treatments, to be restored to the historical fire regime. |
| Condition Class 3 | Fire regimes have been significantly altered from their historical range. The risk of losing key ecosystem components is high. Fire frequencies have departed from historical frequencies by multiple return intervals. This results in dramatic changes to one or more of the following: fire size, intensity, severity, and landscape patterns. Vegetation attributes have been significantly altered from their historical range. | Where appropriate, these areas may need high levels of restoration treatments, such as hand or mechanical treatments, before fire can be used to restore the historical fire regime. |
| ¹ Current conditions are a function of the degree of departure from historical fire regimes resulting in alterations of key ecosystem components such as species composition, structural stage, stand age, and canopy closure. One or more of the following activities may have caused this departure: fire suppression, timber harvesting, grazing, introduction and establishment of exotic plant species, insects or disease (introduced or native), or other past management activities | | |

Table

*Lemhi County trends are based on preliminary data from Salmon Interface Watershed Assessment (in May 2003).

Table III – Historic Natural Fire Regime Groups for Lemhi County as interpolated From Salmon Interface Watershed Assessment (in May 2003).

| Fire Regime Group. | Salmon Interface Analysis Area. | Estimated trends for north and west portions Lemhi County.* | Estimated trends for south and east portions Lemhi County.* |
|------------------------------|---------------------------------|---|---|
| I | 33% | 45% | 35% |
| II | 14% | 5% | 15% |
| III | 40% | 40% | 40% |
| IV | 6% | 5% | 5% |
| V | 0% | Trace. | Trace. |
| Other (rock, water, etc...). | 7% | 5% | 5% |

* Trends are based on preliminary data from Salmon Interface Analysis

Table IV – Historic Natural Fire Regime Group and preliminary current Condition Classes for Lemhi County interpreted from analysis of Salmon Interface Watershed Assessment (in May 2003).

| Estimate Trends for Lemhi County* | | | |
|-----------------------------------|--------------------|--------------------|--------------------|
| Fire Regime Group | Condition Class 1. | Condition Class 2. | Condition Class 3. |
| I | 0 % | 60 % | 40 % |
| II | 0 % | 5 % | 95 % |
| III | 5 % | 94 % | 1 % |
| VI | 20 % | 45 % | 35 % |
| V | Trace | Trace | Trace |

* Trends are based on preliminary data from Salmon Interface Analysis.

In the forested ecosystems, Condition Class 3 are areas that generally are at high risk of crown fires during high fire danger weather conditions.

Condition Class 2 are areas that are generally at high risk of allowing crown fires to spread and often facilitate the sustaining progression of large high severity wildfires by being crown fire bridges between Condition Class 3 patches.

Fire History map(see map annex)

Seasonal Drought Conditions (see map annex)

Lightning Storm Tracking Patterns

The combination of weather, lightning, and unnatural fuels result in high risk of uncharacteristic wildfire behavior and severity:

July, August and September are, significantly, very hot and dry. Because of these high temperatures and dryness, lightning caused fires account for the majority of wildfire ignitions. With the onset of summer drought; frequent lightning can dangerously line up with prevailing wind patterns, which could result in very fast moving catastrophic fires.

Because of topography, storms generally are brought in from the west or southwest. They are then pushed by prevailing winds, which travel across Idaho and track up through central Idaho and funnel through the Middle Fork, Main Fork and North Fork of the Salmon River. Then the storms continue through our county and are stalled and concentrated at the Continental Divide. Clouds are then hanging with electrical charges sending lightning strikes to the ground and generating ignitions. This often occurs without wetting rains and this process is very representative of Lemhi County.

Recent fires:

- Long-Tom Fire (1985) = 74 firefighters were entrapped.
 - Lake Mountain Fire 1985.
 - Clear Creek Complex (2000) = largest fire in Idaho history and consumed over 300,000 acres
 - Twelve Mile Fire 2000 = Two residents seriously burned (one near death).
 - Cramer Creek Fire 2003= Two Forest Service Fire Fighter fatalities
 - Whittington Fire, 2003 evacuation of 46 residents from Sunset Heights Subdivision.
 - Cabin Creek 2004 723 acres,
-
- Preliminary data of fire on the west half of the Salmon Challis National Forest (SCNF) show an unnaturally high amount of high severity acres burned in fires from 1994 to 2001. (A Fire Severity Study is being conducted by the Salmon- Challis National Forest in 2003.

Fire History Dates:

| | |
|-----------|-----------------------------------|
| 1970's | SCNF - 92,300 acres were burned. |
| 1980's | SCNF - 234,100 acres were burned. |
| 1990's | SCNF - 88,400 acres were burned. |
| 2000/2005 | SNF - 483,386 aces were burned |

The negative effects of large high severity fires include:

- Endangering life and property
- Loss of air quality
- Loss of economic values
- Lose of cultural values
- Loss of wildlife habitat
- Loss of water quality
- Loss of soil productivity
- Invasive noxious weeds
- Drought/Fire/Ecosystem Health Problem. (Ref. "Potential Impact of Drought on the 2003 Wildland Fire Season with Respect to Fire Regimes and Condition Classes" "Climate, Ecosystem and Fire Application (CEFA) Special Report 2003-01. April 15, 2003.

In addition to the above mentioned effects; many areas experience accelerated erosion and mass wasting (landslides), debris flows and loss of economic timber value. Salvaged timber realizes a greater loss of value. Also, the aesthetic value of recreational communities and parks is greatly diminished, thereby creating an additional economic burden on the community.

According to the Salmon-Challis National Forest Archives, lightning caused fires are frequent throughout the counties with most fire activity centralized in and around the Salmon River corridor.

The forested areas adjacent to the Main Fork and the North Fork of the Salmon River, including the greater watersheds of the adjacent drainage, have a long history of fire occurrence. Frequent low-intensity fires were common throughout the history of this county, which prevented large build-ups

of fuel loads. Fire suppression, fire exclusion and environmental factors have contributed to unique and heavy fuel conditions. Consequently, mostly pure stands of Ponderosa Pine now include pervasive stands of Douglas-Fir, which create a ladder fuel effect. Historically, there was little threat of catastrophic crown fire events. The advance of foreign weed species and timber disease, which creates a down and woody fuel load and mixed stands of Ponderosa Pine and Douglas Fir, also contributes to the increasing likelihood of fires exceeding the abilities of initial attack suppression resources. The conditions for catastrophic fire are now prevalent in the counties, as witnessed in 2000 with the advent of the Clear Creek fire.

In recent years the fuels structures have changed dramatically. All other characteristics remain the same, i.e. weather conditions, drought and wind patterns. Ground fires have not burned in a natural pattern throughout the wildland which would cause a thinning effect of the ladder fuels and fast fuels. Conversely, these fuels have been allowed to build-up, thereby creating a dense wildland, which greatly increases the risk for a catastrophic wildfire to occur.

Because of this, when wildfires ignite, they often are more severe because of the unnatural fuels build-up. The fires tend to be hotter and they can not be suppressed as easily. In addition, because of the high intensity heat and controlling wind patterns these wildfires now release more firebrands, causing them to jump firebreaks and creating an incident of further fire devastation. The arrangement of the fuel structures have changed, making it incumbent upon us to modify the fuel structure by implementing fuels reduction, which is now our best avenue for prevention of catastrophic wildland fires.

Crown Fire behavior characteristics in Lemhi County, Idaho.

The forested ecosystems in Lemhi County are characterized by a dominance of closed canopy multi-layered forest fuel structures. These high risk fuel structure that dominate the landscape combined with the typically very hot and dry weather patterns of the fire season, the unique funneling pattern of lightning storms (ignitions) in the river canyons, the steep terrain, and the persistent winds that result from canyon and river terrain, make Lemhi County a demonstrated location for some of the most extreme fire behavior in the northwestern United States. Extreme crown fire behavior has been a common occurrence in Lemhi County since the later portion of the last century resulting in more than 200 firefighter entrapments since 1979.

Crown fire behavior is displayed on almost all of the wildfires over 1000 acres in size occurring in forested areas. Some crown fires can become very large and turn into extreme crown fire events in a short period of time. When large crown fires move out into the sagebrush ecosystems they can they can spread fire over a large fire front and throw fire brands over long distances, resulting large fast moving sagebrush fires that can quickly overwhelm fire suppression crews even in sagebrush fuel types.

Extreme fire behavior events in Lemhi County have placed firefighter personnel in very dangerous situations. In 1969, the Ship Island Fire displayed extreme unexpected crown fire behavior and rapid fire movement, resulting in the burnover of three fire fighters, which resulted in one firefighter's death. On July 4, 1985, on the Lake Mountain, 85 firefighters were entrapped and deployed personal fire shelters to survive. In September 1985, on the Butte Fire, 118 firefighters were entrapped and 73 personal fire shelters were deployed to survive the fire. Both of these fires were the result of unexpected fast moving crown fire behavior. In 2003, on the Cramer Fire, two firefighters were killed when entrapped by unexpected fast moving crown fire.

Crown fires can have a very fast rate of spread and are known for throwing fire brands long distances out in front of the flaming front, resulting in an even faster fire spread rate. Crown fires have the ability to spread very rapidly and overwhelm all fire suppression forces and effort in their path. The following area examples recent wildfires that displayed rapid crown fire spread events on the Salmon-Challis National Forest: (This list could be longer, but that would require more time to track down the data).

Frog Pond Fire (2004) - spread 5 miles in one afternoon.
Withington Fire (July 17, 2004) - spread 7 miles in one afternoon.
Tobias Fire (July 13, 2004) - spread 6 miles in one afternoon.
Clear Creek Fire - On July 16, 2000, spread 12 miles in one afternoon and then on July 28, made another 12 mile run in one afternoon.

Lemhi County Forest Fire Cost/Profit loss

WILDFIRES ECONOMIC IMPACT

Summary

Wildfires encompass environment, properties, economic loss, and most unfortunately many lives. Public lands use, private lands, animals, tourism, merchants, schools and health institutions are just a few that experience losses. To assess an exact dollar amount may never be touchable. After the wildfires there are years of recovery in all of these areas.

The wildfires of the year 2000, for example, has costs that are in the millions. That does not translate into what was spent towards the threat to urban interface. More public land was effected than private land. The Lemhi County land ownership breakdown is; State land 1%, Federal land 91% and Private land 8%.

Suppression

Suppressions are the beginning costs that Federal monies encounter during wildfire season in Lemhi County. In the last four years at total of \$50,476,747.79 of Federal monies have been used in the suppression of wildfires. The following is information compiled from the FOIA (Freedom of Information Act) request made to Salmon – Challis National Forest Service:

Rehabilitation

Federal monies past and present are being utilized for the majority of wildfire recovery in Lemhi County. The following is information compiled from the FOIA (Freedom of Information Act) request made to Salmon – Challis National Forest Service:

The wildfire burned acres for Lemhi County are as follows:

- In the year 2000, total burned acres were 337,029.6.
- In the year 2001, total burned acres were 255.7.
- In the year 2002, total burned acres were 7,364.5.
- In the year 2003, total burned acres were 60,127.75.
- In the year 2004, total burned acres were 4,843
- In the year 2005, total burned acres were 4,467.15

Reimbursement claims with Salmon-Challis National Forest by private landowners are as follows:

- In the year 2000, total reimbursements were \$21,036.52.
- In the years 2001 to 2002, there were no approved paid claims for fires.
- In the year 2003, total reimbursements were \$1,789.43.
- Information 2004-2005 not available.

Some rehabilitation costs inside the burned acres are still ongoing and the following may be estimates: For the years 2000 to 2001, estimates of \$9,798,352.00. For the years 2002 to 2003, estimates of \$4,821,161.00. The costs for rehabilitation of acres burned and range reimbursement due to fires according to BAER (Burned Area Emergency Rehabilitation) reports are as follows: In the year 2000, costs were \$86,634.00 and range rider reimbursement for moving cattle from burned areas during grazing season for recovery of native vegetation for two seasons was \$21,527.00. In the years 2001 to 2002 there were no BAER funded rehabilitation's. In the year 2003, costs were \$13,353.00. Funding has also been requested for a temporary, contract range rider for the Hayden allotments to include maintenance of temporary fences. At the time of this writing, efforts are underway to accommodate permittees with needed temporary range for livestock during the portions of the spring and summer for 2004. For the years 2000 to 2003, rehabilitation costs outside of the BAER for Lemhi County are estimated to be \$329,371.00.

Additional Economic Impacts

- The latter part of 1999 to the early part of 2000 the Beartrack mine conducted major staff cut backs. Some mines have reached the end of their economic lives, this includes the Meridian Gold's Beartrack Mine here in Lemhi County. After processing nearly 50 million tons of ore and waste, this mine has decreased its operations. As of December, 2003, only 11 of the mine's 121 employees remained at the site. The summer employment is between 20 to 30 employees. Despite these setbacks, the sector faces the future with guarded optimism.
- Without having an official listing of all local businesses or business licensing for each Lemhi business; it is difficult at this time to put a completed percentage on the effect of or closing of businesses as a result from wildfires.

Lemhi Community

| Lemhi Statistics | 1998 | 1999 | 2000 | 2001 | 2002 | 2003 |
|-------------------|-------|-------|-------|-------|-------|--------|
| Population | 8,030 | 7,978 | 7,806 | 7,606 | 7,649 | *7,663 |
| Labor Force | 4,110 | 3,930 | 3,667 | 3,665 | 3,699 | 3,853 |
| Employment | 3,764 | 3,618 | 3,337 | 3,387 | 3,424 | 3,596 |
| Unemployment rate | 8.4 | 7.9 | 9.0 | 7.6 | 7.4 | 6.7 |

Source: Idaho Secretary of State Department, Idaho Department of Commerce, Idaho Association of Counties, Idaho Public Lands and Lemhi County Treasurer. Figures round down.

*2003 is estimated per the Idaho Department of Commerce. The actual figures will be available July, 2004.

Business Impact Survey

From the Lemhi businesses two part survey, which was conducted in the Fall of 2000, the following figures can be adjusted 11% minus or plus due to non-response or incomplete surveys.

Part I

The September, 2000 door to door survey is showing that of the 55 surveys completed, with the primary focus of the survey was retail, fuel, food service, recreation business and lodging in the downtown district and highways adjacent to town. Of the businesses surveyed, about 65% are reporting an average of 35% reduction in sales, 15% are reporting sales similar to 1999 and about 20% are reporting sales increased up to 20%. The reduction in sales was primarily attributed to the loss of tourism associated with smoke conditions, closure of highways, closure of rivers and media impacts.

Businesses heavily dependent on tourists suffered the greatest losses, while those that depend primarily on local business stayed near projected sales or increased slightly due to fire related business. At the time of this survey, over 60% of the businesses surveyed were concerned about the following three months with impacts to hunting, fishing and Demobilization of the fire teams.

Part II

The November, 2000 mail survey showing that with the majority which did respond, it was stated they were not affected in 2000 due to their type of business. Only 75 of 440 surveys were returned. Of the 75 returned surveys, 17% did not provide adequate data or due to not being established in 1999, therefore could not show differentiating results for comparing 1999 and 2000. With the remainder that responded to the requested materials these are the findings. For the year 2000, about 41% responding are showing an average of 22% reduction in sales, 15% are showing sales similar to 1999, and about 27% responding are showing sales increases averaging 11%. For the complete, returned surveys, there was a \$2.2 million loss of sales for 2000 compared to 1999. Applying the analysis to 1999 total Lemhi County sales, it is estimated that \$3.6 million was gained by businesses, \$10.7 were lost by businesses, for a net estimated \$7.1 million loss in sales for the year 2000.

Local Survey Summary

Businesses reported an average of 20% loss of employees to fire fighting activities. Businesses showing an increase in sales of 70% had government contracts as opposed to only 16% of businesses reporting losses. Increased sales of 35% were reported during the peak wildfire period. Comparing to 1999, sales returned within 4% in September, 2000.

Businesses showing losses in sales of 16% had government contracts. The 16% lower sales of the peak wildfire period, increased to 24% lower sales in September, 2000. The reported annual 22% less sales suggest that the majority of these business sales are related to the period from July through September. Of the businesses responding to the survey, if the other surveys not returned were discarded, businesses reporting lower sales are 50% of the remaining businesses and an adjusted annual net change could be as high as a negative \$8.6 million.

Ranching

Ranching is one of the main industry in Lemhi County. With the wildfires being predominately on government owned lands this affects range permitted. When this industry is affected it trickles down to other local businesses causing further impact.

The 2000 wildfires hit fast and hard. Immediate closures of all accesses were issued. Not having a safe amount of time to enter and recover livestock from the burning areas resulted in livestock loss. Some rangelands were put into two year resting periods causing heavy cut backs and in one case a complete sale of livestock. Ranchers having to come off the rangeland early resulted in additional costs to purchase great amounts of feed and leasing of adequate holding pastures.

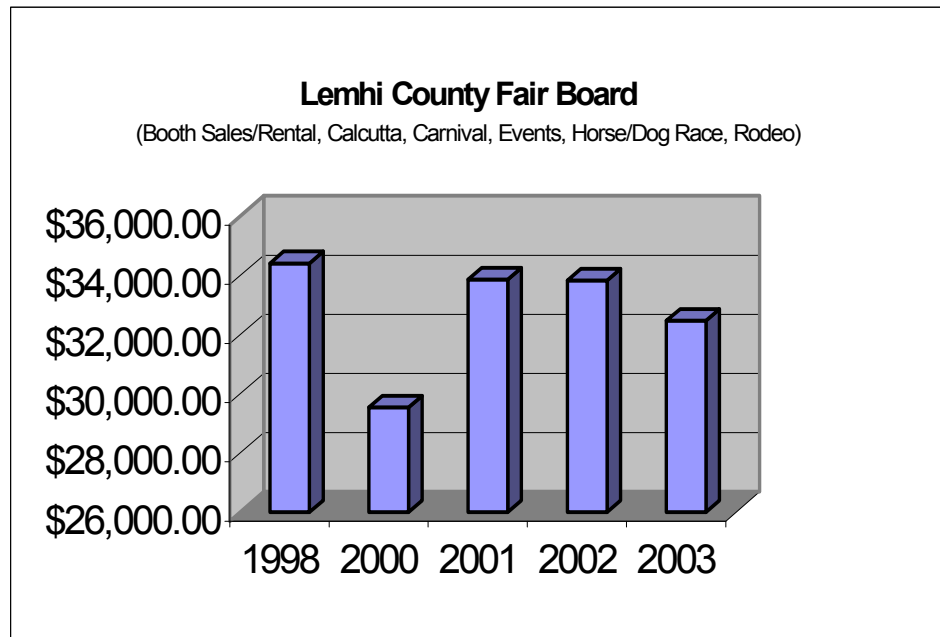
The 2003 wildfires effected ranchers in much the same way. Some of the larger allotments have been approached, through the Bureau of Land Management, with temporary rangeland for the year 2004 and 2005 approximately fifty miles from the ranches home base. The Bureau of Land Management has applied for monies to pay for a range rider for a portion of the 2004 grazing season. The ranches would pay the range rider's salary for the remainder of the grazing season. The ranches would be responsible to pay the livestock shipping to and from the temporary rangeland. The smaller allotments were not accommodated with temporary rangeland. These effects resulted in major livestock sales, purchases of great amounts of feed and leasing of adequate holding pastures, once again.

There is not a reimbursement in this area of loss. Having to be put into the situation to sell livestock during the low time of the market is an additional loss to the ranches. The labor employed is also cut back because of the diminished numbers of livestock and the additional costs the ranches must endure. Ranchers, upon qualifying, could receive low interest grants, adding another expense of interest to be paid. Primarily the ranchers are left holding 100% of the loss. These losses are ongoing and are adding up to millions of dollars, which is the result of the loss of livestock and the loss of rangelands or portions of rangelands. If allowed, the only way to put an exact dollar amount to these losses would be to collect each and every accounting of these years and years to come from each ranch affected.

Outdoor Events

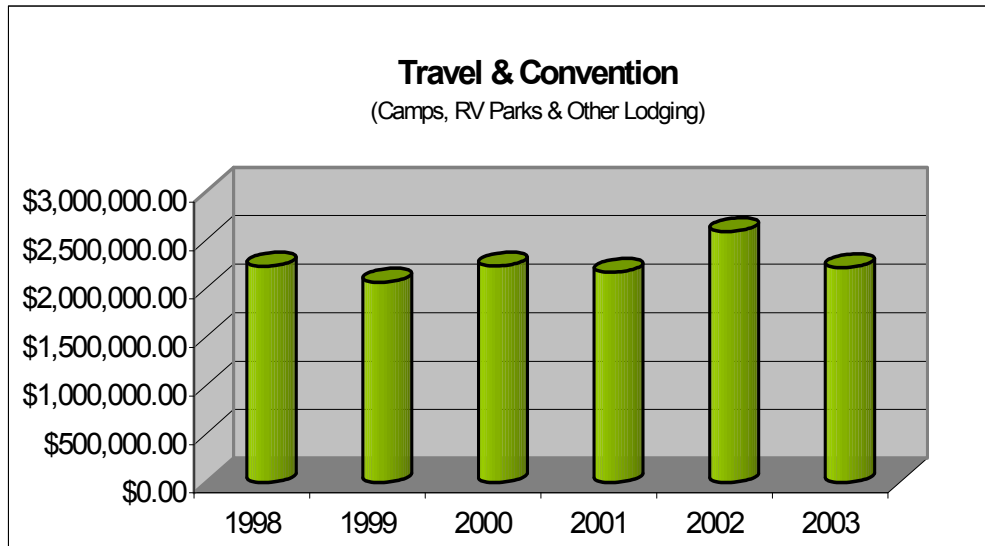
The wildfires effect air quality, which in turn restricts a majority of the community involvement with the outdoor events. The Lemhi County Fair events reflect some of these restrictions. The following are some of the inflows for the Lemhi County Fair Board: The year 1998 inflows were \$34,414. In 1999, the Lemhi County Fair Board converted their files to a new system. In that process most of the information for 1999 was lost and therefore it is not available. The year 2000 inflows were \$29,544; down from 1998 approximately 14%. The year 2001 inflows were \$33,868; up from 2000 approximately 13%. The year 2002 inflows were \$33,839; slightly down from 2001 approximately 0.1 %. The year 2003 the inflows were \$32,469; with the onset of the wildfires the inflows were down from 2002 approximately 4%.

Source: Lemhi County Fair Board



Recreational Lodging

Travel and Convention sales include camps, RV parks and other lodging showing a portion of the



tourism trend. In the year 1998 total sales were \$2,230,832.00. In the year 1999 total sales were \$2,064,986.00; down from 1998 approximately 7%. In the year 2000 total sales were \$2,231,610.00; up from 1999 approximately 7%. In the year 2001 total sales were \$2,168,741.00; down from 2000 approximately 3%. In the year 2002 the total sales were \$2,587,696.00; up from 2001 approximately 16%. In the year 2003 (December, 2003 not yet available) total sales, at this time, are \$2,214,879.00. Estimation at this time shows sales down approximately 14%. Final sales for the year 2003 will be available July, 2004.

Source: Idaho State Tax Commission

Note: In January 2001 the Idaho State Tax Commission made significant changes in the processing and reporting of Travel and Convention Tax Returns. Due to these changes, a comparison of months in 2001 and later to identical time periods in prior years is discouraged.

Outfitters and Guides

Grant Simonds, Executive Director of the Idaho Outfitters and Guides Association responded with the following 2000 wildfire impact information: (Reports such as this are not compiled yearly, therefore the years of 1998, 1999, 2001, 2002 and 2003 are not available for comparison.) The Idaho Outfitters and Guides Association (IOGA) is a statewide business trade organization representing water and land based business including approximately 150 businesses directly affected by the summer of 2000 federal land closures. IOGA contacted all affected Idaho outfitter businesses both in and out of wilderness and heard from 95% of them. The IOGA data gathered from affected businesses estimates that nearly 300 river and land based scheduled summer vacation trips were cancelled affecting in excess of 2,150 guided clients and 400-plus employees of outfitters. The value of lost business exceeds \$2.5 million dollars. Nearly 100 Frank Church River of No Return Wilderness permitted commercial businesses including 65-plus Main Salmon and Middle Fork Salmon river outfitters lost both pre-season and late season bookings with the closure of the Frank Church Wilderness, the Main Salmon River and the Middle Fork of the Salmon River. The closure was lifted on September 6th, much too late for summer water and land-based outfitter businesses to recoup cancelled August and September boating, guest ranch and summer pack trips.

Generally, mid-August to late September guided boating trips represent 30 percent of annual guided business revenue. The summer of 2000 lost business during this period of time represents for many outfitters the difference between paying remaining seasonal operational costs, the mortgage, making a modest profit and operational income for the fall and winter.

Almost all access was restored to Idaho public lands on September 8th allowing all but a few hunt outfitters, guides and clients to be able to keep commitments and reservations to hunt the Idaho backcountry beginning with the elk opener September 15th. However, backcountry fire damage to trails, bridges and other infrastructure were at that time being assessed and in some locations were considerable. The damaged public lands transportation system in burned areas did affect the quality of the guided and non-guided recreation experience in many areas for years to come both in the backcountry and along the trails that are adjacent to the river systems.

Had the closures continued into the late summer and fall hunting season, the IOGA tally of lost business included another \$2.5 million. IOGA also tallied business losses incurred by others such as air taxis, rental equipment suppliers and shuttle businesses. Suffice to say that the summer of 2000's tourism economy of small towns surrounding and adjacent to the restricted areas was hurt significantly. Approximately 50 more Idaho licensed and federal special use permitted outfitters lost business due to federal land and road closures adjacent to the Frank Church Wilderness on the Salmon - Challis, Payette, Nez Perce, Bitterroot (including the southern portion of the Selway Bitterroot Wilderness), Clearwater and Boise National Forests.

Several examples of tallied business losses include:

- Twenty-five of twenty-six Middle Fork Salmon river businesses reported losses that averaged nearly \$37,000.
- The average estimated loss for 42 Main Salmon river and guest ranch businesses is \$21,000 plus.
- The average estimated loss for 15 land-based outfitter businesses with summer pack and fishing trips is nearly \$24,000.

Idaho Outfitters and Guides Association (IOGA) reported that the local resource managers of the Main and Middle Fork Salmon Rivers have told IOGA, in the year 2001, that ideas for mitigation of lost business were being compiled and considered by the Washington Office of the Forest Service. Some decisions regarding mitigation for 2000 private river runners who held permits for the Main and Middle Fork during the closure period were made by local managers in that permittees were offered the same permit date for 2001.

IOGA strongly recommended that mitigation for Middle Fork and Main Salmon river commercial outfitters include allowance to increase party size to 32 from 30 for 2001. This would not increase the number of watercraft nor impact campsites. This would allow businesses to recoup some of the lost business of summer 2000. Further, they recommended that a decision be made on this recommendation by the end of September, 2000 as permitted outfitted launches were currently being booked for 2001. IOGA does not have a good number of estimated losses incurred by outfitter businesses adjacent to the closed areas caused by negative publicity and/or excessive smoke.

Rebuilding After the Loss

Rebuilding after wild land fires can only be accomplished with a joint effort on federal, state, county and community levels. These joint efforts are in the form of reimbursements, rehabilitation, grants, low interest loans and physical participation.

FEMA - In referencing a survey conducted the fall of 2000; from 1999 to 2000 many Lemhi businesses had registered with FEMA Disaster Assistance. Funds statewide were made available with FEMA/SBA in 2000. Businesses of any size may borrow up to \$1.5 million to repair or replace damaged or destroyed real estate, machinery and equipment, inventory, and other business assets. Only small businesses could apply for Economic Injury Disaster Loans of up to \$1.5 million to help pay their fixed debts, payroll, accounts payable, and other bills that can't be paid because of the disaster's impact.

In June of 2002, communities and private landholders in Lemhi and Custer counties suffered extensive damage during the wildfires of 2000. To aid in recovery, the Salmon-Challis National Forest was granted \$475,000 in National Fire Plan funding through the State and Private Forestry program. This funding was sub-granted to communities and individual private landowners through seven grants and several fence reimbursement payments.

Comparing the past six years with an estimated 404,777.5 acres burned, the economic impact staggers according to type and location of business. Of the surveyed businesses, with adjusting percentages factored in, show 6% to 9% loss. Affected ranches concerning livestock and rangeland show 100% loss. Events, lodging and tourism show 96% loss. This impacts the State's and Lemhi County's revenues.

Fuels Reduction Program

Fuels reduction programs are an important factor being implemented not only for wildfire containment; it is improving safety for the valued lives of firefighters and support teams on wildfires.

BLM Agreements Summary

Wildland Urban Interface assistance agreements began July 7, 2001 and is scheduled, at the time of this writing, to November 15, 2005 with funds totaling \$344,000.00.

Itemizations are as follows:

| Assistance Agreement | Date | Description | Amount |
|------------------------------|----------------------|---|---------------------|
| Community Fire Assistance | 07/07/01 to 12/31/01 | Assessment & mitigation plan of the current issues relating to fire protection, education, equipment in the communities & urban interface areas of Lemhi Count Community Fire Assistance. | |
| Community Fire Assistance | 08/19/02 to 01/01/03 | Purchase of the New Encore Portable Tire Baler. | \$71,000.00 |
| Community Fire Assistance | 08/19/02 to 01/01/03 | Public Outreach & Draft Hazard Assessment. | \$113,000.00 |
| Community Fire Assistance | 08/08/01 to 09/30/05 | Additional funding. | \$80,000.00 |
| Community Fire Assistance | 11/15/05 | Development of the mitigation plan for Lemhi County. | \$80,000.00 |
| CURRENT FUNDING TOTAL | | | \$344,000.00 |

Source: Bureau of Land Management.

The monies being used to process and initiate the mitigation plan are approximately \$100,000.00. If Lemhi County did not produce a mitigation plan the county would not qualify for a majority of assistance grants and funds. Without mitigation Lemhi County's revenue recovery and physical recovery would be slow or not at all.

To quote from President Bush's executive summary on healthy forests; "These unnaturally extreme fires are caused by a crisis of deteriorating forest and rangeland health, the result of a century of well-intentioned but misguided land management."

ACKNOWLEDGMENTS

Idaho Bureau of Land Management
Salmon – Challis National Forest Service
Idaho Secretary of State Department
Idaho State Tax Commission
Idaho Department of Commerce
Idaho Association of Counties
Idaho Department of Lands
Idaho Outfitters and Guides Association
Lemhi County Treasurer Office
Lemhi County Fair Board
Salmon Valley Chamber of Commerce
Lemhi County Local Merchants
Lemhi County Ranchers
Meridian Gold / Beartrack Mine

Lemhi County Wildland Fire Hazard, Risk and Mitigation Plan For the Idaho Mitigation Strategy



Lemhi County covers 4,579 square miles, located in central Idaho bordering Montana along the Continental Divide. The federal government owns 91% of the county. As of 2003 censuses, Lemhi County population was 7806, Salmon and Leadore are the two cities in the county; Salmon being the county seat with a population of 3038, Leadore with the population of 100. The remaining residents of Lemhi County reside in urban interface and subdivision areas.

Identification of Risk Areas

The Planning Committee identified areas of the county that are vulnerable to the threat of wildland fire based on; past fire occurrence, wildland fuel conditions, number of people affected and local fire suppression effectiveness. A simple matrix was used to evaluate the criteria.

- | | |
|-----------------------------|------------------------|
| * Past fire occurrence | 1-5 lowest to greatest |
| * Wildland fuel conditions | 1-5 lowest to greatest |
| * Number of people affected | 1-5 lowest to greatest |
| * Local fire suppression | 1-5 greatest to lowest |

A map was developed to include the outline of areas. Color coordination has been added to the map for easy identification of areas and their levels of risk. Red high, Yellow moderate and Green low.

Lemhi County areas at risk:

Color code: 1-9 Green (low) 10-12 Yellow (moderate) 13 up Red (high)

| Area | Fire Occurrence | Fuel Load | Resident population | Fire protection | Total | Risk Level |
|--|-----------------|-----------|---------------------|-----------------|-------|------------|
| Birch Creek | 1 | 5 | 1 | 3 | 7 | Green |
| Gilmore Summit to Tex Creek | 2 | 3 | 2 | 2 | 9 | Green |
| Tex Creek to Hayden Creek | 2 | 3 | 3 | 1 | 9 | Green |
| Hayden Creek Drainage | 3 | 3 | 3 | 2 | 11 | Yellow |
| Hayden Creek/Baker | 2 | 2 | 3 | 2 | 9 | Green |
| Salmon City 7 mile radius | 3 | 2 | 4 | 1 | 10 | Yellow |
| Jessy Creek Drainage City Salmon | 3 | 5 | 5 | 1 | 14 | Red |
| Sunset Heights subdivision | 3 | 2 | 4 | 2 | 11 | Yellow |
| Williams Creek drainage- Lake Creek | 2 | 3 | 3 | 2 | 10 | Yellow |
| Williams Lake Recreational /Residential | 3 | 5 | 4 | 3 | 15 | Red |
| Shoup Bridge Hwy 93 S- 12 mile Hwy 93 S | 2 | 3 | 2 | 2 | 9 | Green |
| 12 Mile Hwy 93 S- Ellis | 2 | 2 | 1 | 4 | 9 | Green |
| Elk Bend Proper | 2 | 2 | 4 | 4 | 12 | Yellow |
| Pahsimeroi | 3 | 2 | 2 | 3 | 10 | Yellow |
| Carman Creek Hwy 93N—Tower Creek Hwy 93 N | 3 | 3 | 4 | 2 | 12 | Yellow |
| Tower Creek Drainage-Kriley Gulch | 4 | 3 | 4 | 3 | 14 | Red |
| 4 th of July Creek Drainage | 3 | 4 | 3 | 2 | 13 | Red |
| Kriley Gultch Hwy 93N-Sheep Creek Hwy 93 N | 4 | 4 | 3 | 2 | 13 | Red |
| Sheep Creek Drainage | 2 | 5 | 5 | 5 | 17 | Red |
| Sheep Creek Hwy 93N- Lost Trail Hwy 93 N | 3 | 5 | 2 | 4 | 14 | Red |
| Gibbonsville /Dahlongea Creek | 3 | 5 | 4 | 2 | 14 | Red |
| North Fork / Horse Creek | 5 | 5 | 4 | 5 | 19 | Red |
| Panther Creek Drainage | 5 | 5 | 2 | 5 | 17 | Red |
| | | | | | | |
| | | | | | | |

MITIGATION STRATEGIES:

The following mitigation strategies were identified and developed by the committee. Action for each identified strategy are categorized, and each category has areas from high to low priority;

| <i>Education</i> | <i>Preparedness/ Response</i> | <i>Fuels Reduction</i> |
|---|---|--|
| <p>#1 Wild Land fire suppression training for Lemhi County's VFD</p> <p>#1. Emphasize preservation of wildland urban interface fire using proactive, cooperative approach with incentive programs</p> | <p>#1. Hire Project coordinator.</p> <p>#1.Development of county wide evacuation plan.</p> <p>#1.Active recruitment and training for fire personnel in Elk Bend/Williams Lake area.</p> <p>#1. Home evaluations High/Moderate risk areas.</p> <p>#1. Assure that County Fire Departments have adequate equipment to saftley and efficiently suppress fires</p> <p>#1. Assist in economic development/ maintenance of small diameter wood utilization in Lemhi County.(2005 update)</p> | <p>#1.Fuels reduction projects on privet properties.</p> <p>#1 Hazardous fuel treatment on Bureau of Land Management lands adjacent to Urban Interface areas.</p> <p>#1. Hazardous fuel treatment on Forest Service lands adjacent to high and moderate risk urban interface areas.</p> |
| <p>#2. Conduct County Fire Wise workshops.</p> <p>#2. Subdivision home site education on creating survivable/defendable space, and wildfire education.</p> | <p>#2. Identification of fuels reduction projects, high/moderate risk areas.</p> <p>#2. Additional PPE for Williams Lake VFD</p> <p>#2. Additional PPE for Elk Bend VFD</p> | <p>#2.Ensure that the land development ordinance and building code support the mitigation of wildland urban interface fire danger.</p> <p>#2 Improve accessibility routes in Williams Lake, Sheep Creek, and Kriley Gulch areas.</p> <p>#2.Community cleanup of the Williams Lake area.</p> |
| <p>#3. Provide education for county developers /contractor/realtors to implement defendable space criteria, and utilization of fire resistant material in new constructions of buildings in the interface areas.</p> | <p>#3. Develop county wide road and street systems that proves for efficient fire fighting and clear evacuation routs.</p> <p>#3.Explore the economic feasibility of a small diameter wood utilization business in Lemhi County</p> <p>#3.Encouragement of utility companies to reduce ignition fuels and windfall hazards in power line corridors and install underground lines in new subdivisions when replacing older lines.</p> <p>#3 Institute a utilization plan for the compacted tires from county landfill.</p> | <p>3# GIS Mapping of privet and interface properties</p> |

Action plan to accomplish mitigation measures:

Education

Priority #1

***Wildfire suppression training for Lemhi County Fire Departments**

Training is available through the Bureau of Land Management and the Salmon/Challis National Forest Services Coordination for training to the local fire departments will be scheduled through the Emergency Coordinators office. Training will start the end of March. A Train the Trainer course will be conducted through the Bureau of Land Management. This will allow local fire department instructors to conduct wildland fire training in their own departments. This course will be offered in the spring of 2003.

***Emphasize preservation of wildland urban interface using proactive, cooperative approach with incentive programs.**

Utilize cooperative agreement between Forest Management, county, and private contractors for making availability of the use of slash and deadfall for firewood for the local seniors, handicapped, and/or low income residents.

Encourage property owners to use grant programs to great facilities which can serve a dual purpose as water supplies.

Priority #2

Fire wise workshops, Home-site survivable space, and wild fire behavior education.

Conduct community meeting; held in the early spring to educate the home owners in high to moderate risk areas. Williams Lake, Williams Creek, Gilmore town, Jesse Creek and Hayden Creek. /Leadore are priority.

areas. The Gibbonsville/North Fork area will be given refresher sessions. The committee will check with the Resource Conservation and Development (RC&D) on possible grant funding on this project.

***Subdivision homesite education on creating survivable/defendable space, and wildfire education.**

In the development of all new subdivision, prior to approval of P&Z , developers will be given FIRE WISE development regulation, and opportunity to attend FIRE WISE training.

Priority #3.

Provide education for county developers/contractor/realtors.

Education of implementing defendable space criteria, and utilization of fire resistant material in new constructions of buildings in the interface areas. Provide FIREWISE hand-out to realtors.

Preparedness/ Response

#1 Priority

***Project Coordinator:**

Lemhi County Commissioners, along with representatives from the Forest Service, Bureau of Land Management, Emergency Services, and Local Fire Departments, will conduct interviews for the position Of Project Coordinator/Assistant , to begin in the month of March, 2003. Funding provided by grant for BLM.

***Development of a countywide evacuation plan.**

Lemhi County Emergency Services and Local Emergency Planning Committee will work with all involved agencies to develop a county wide evacuation plan. Individual evaluation plans for high-risk areas will precede.

***Active recruitment and training for fire persons in Williams Lake, and Elk Bend area.**

Lemhi County Emergency Service and County LEPC will start active recruitment for personnel in areas of need. Emergency Service Coordinator will schedule training through Salmon Fire Department, Bureau of Land Management, and Salmon/Challis National Forest Service.

A community meeting has been scheduled for July 5,2003 at Williams Lake for FireWise training, and how defensible space improves home owner's defense against wildland fire, will be topics of the July 5th meeting.

***Home evaluations in high and moderate risk areas.**

Representatives from the committee will incorporate help from representatives of the Community with experience in the process of evaluation of properties that are at risk.

Williams Lake, Williams Creek, Forth of July Creek, Tower Creek, Jessie Creek ,Gilmore town site and Hayden Creek are areas which remain a priority.

***Assist in economic development/ maintenance of small diameter wood utilization in Lemhi County**

With collaborative efforts on Local, BLM, State and Federal properties, prospects of utilizing conjoined sales of small diameter trees, for utilization in post and poles (ect), will help with reduction of fuels near residential areas, and aid in the economical stability of local businesses.

***Assist in proquring grants to help County Fire Departments obtaing apperatises and equipment.**

With the assistance from the Emergency Services and WUI program apply for gants to obtain needed equipment. That will inable departments suppress all forest in the Urban Interface area.

#2 Priority

*** Identification of fuels reduction projects, high/moderate risk areas.**

Through risk assessments conducted by the WUI program , Project coordinator will prioritize high priority projects, Assessment conducting in accordance to County areas at risk, and fuels reduction project proposed by BLM and Forest Service.

***Additional personal protective equipment for the Elk Bend, and Williams Lake Fire Department.**

Emergency Service Coordinator, Elk Bend, and Williams Lake Fire Department will submit a grant request to the Idaho Department of Lands to help fund new protective equipment.

***Hazardous fuel treatment on Bureau of Land Management(BLM) land adjacent high/moderate risk areas**

Bureau of Land Management will assess priority areas and decide treatments needed. The reduction of fast fuels program will be contracted out to private citizens .Mowing of tall grasses, creation of defensible space by the clearing of overgrowth of fast fuels, small timbers and widening fire breaks will be administered.

#3 Priority

***Improve access routs in the Williams Lake, Sheep Creek, and Kriley Gulch area.**

County Commissioners will contract the County Road department to widen access roads and Improve turnarounds where possible in designated areas.

*** Explore the economic feasibility of a small diameter wood utilization business in Lemhi County**

The County Commissioners will contact the Idaho Department of Commerce to determine the feasibility of a small wood utilization business in Lemhi County

***Hazardous fuel treatment on private Properties in identified high risk area,**

Through grants received to the county for Hazardous fuels reduction project. The county WIU coordinator will assess high need/risk properties. This will be conducted through assessments, and public meeting. Projects will also be identified to coincide with fuel reductions projects NFS and BLM are proposing.

****Future Development encouragement of utility companies to reduce ignition fuels and windfall hazards in power line corridors and install underground lines in new subdivisions when replacing older lines.**

The County Commissioners and Fire Prevention personnel will work with Planning and Zoning, Developers, Realtors, Lemhi County Fire departments and Tax Assessors so that future development are more fire safe and homes more defensible. Such things as ingress/egress, road width, water supplies, home addressing, bridges, roofing/building materials and landscaping will be address

*** Institute a utilization plan for the compacted tires from county landfill.**

The county is pursuing the possibility of using compacted tires for fill in the High School parking lot. The students will be asked to apply for grants to help with the construction of this project.

Fuels Reduction

Priority # 1

*Fuels reduction on private property; contract with property owner or private contractor to reduce fuel at a minimum of a 50 foot perimeter of all structures on property. Incorporate FIREWISE guidelines for private projects. If possible have projects on private properties adjacent to BLM/Forest service projects.

***Hazardous fuel treatment on National Forest ,BLM, and State and adjacent to moderate/high-risk areas.**

The Williams lake area will have a work day where identified hazardous fuels will be reduced.

This will be in conjunction with the NFS and BLM working groups

Community Meeting with property owner adjacent to BLM ground in Gilmore Summit area.

Community meeting with residents in the Williams Creek drainage area/Develop FIREWISE community

Priority #2

***Ensure that the land development ordinance and building code support the mitigation of wildland urban interface fire danger.**

***Improve accessibility routes in Williams Lake, Sheep Creek, and Kriley Gulch areas**

County Commissioners will contract the County Road department to widen access roads and Improve turnarounds where possible in designated areas.

***Community cleanup in Williams Lake area.**

The Williams Lake Citizen group and Williams Lake Volunteer Fire Department will organize cleanup date to be held in early July, Fire Wise work shop will be sponsored by Emergency Services.

The Williams Lake Citizens group will contact the Lemhi County Road Department to get dump trucks to haul debris.

Priority #3

***G.I.S. Mapping for private/Interface fuels.**

Personnel from the County will be sent to training to upgrade skills, also upgrade GIS software

Lemhi County Wildland Fire Mitigation Action Plan Maintenance:

In the effort to measure the progress of mitigation actions all identified projects will be reviewed and assessed to the degree of completion by the committee.

All identified project will be evaluated on a scale of 1-5, 1 being lowest and 5 highest on the completion scale.

Re-prioritization of projects will be done on an annual basis by the committee. Results of this will be recorded and added to Mitigation plan with the annual up-date of the plan.

Action Plan maintenance evaluation:

| Project | Evaluation | Date | Score |
|--|--|-------------------------|-------|
| Home evaluation of high/moderate risk areas | Evaluation for Williams Lake, Williams Creek, Gilmore , Complete (05) Tower Cr, 4 th July Cr., Hayden Cr. Jesse Cr To start 2006 | 5-05 | 3 |
| Fire Wise work shop for high risk area and general community of Lemhi county | Work shops conducted in various part of Lemhi County, This is a continues process do be done yearly, WUI coordinator/assistant conduct workshops | Work shops started 04 | 4 |
| Fuels treatment on BLM land adjacent to private properties | BLM has worked cooperatively with Lemhi County in identifying areas of need for HFR, adjacent to private properties, as of currant the BLM has completed and HFR in the Williams Lake area, and Gilmore area | Project Start date 2004 | 3 |
| Fuels reduction on private properties | Several fuels reduction projects have been completed, through coordination with the BLM, County, UFS, and private citizens of high risk area 25 private fuels reduction projects have been completed. Areas of fuels reduction, Sheep creek (10 reduction projects, Gibbonsville (5 fuels reduction project, Panther creek (1 large scale, Williams lake (6 Williams Creek (3. More reduction projects have been identified to begin in 2006 | 2003-2005 | 4 |
| Wild fire suppression training for local Volunteer | Through the BLM all the volunteer Fire departments in Lemhi County go through yearly Wildand fire suppression/survival training | 2003 Annual | 5 |
| Recruitment and training for fire personnel in Williams lake/Elk Bend area | Recruiting in Williams Lake area is minimal due to isolated location of residential area. Elk Bend Fire Department has had active recruitment success, the department had increased from 6 volunteers to 20. Training in both areas has been well received, both departments have received training in fuels reduction and wildland fire suppression | 2004 Training continual | 5 |
| Updated PPE for Elk Bend and Williams Lake VFD | Both departments have received equipment through grants procured | 2004 Contin | 3 |

| | | | |
|---|---|------------|---|
| | through the IDL, and FFA, Elk Bend has purchased a new/Used tender, through IDL grant, Efforts to continue to upgrade PPE is continual. | ual | |
| | | | |
| Improvement in access to road in Williams Lake, Sheep Creek, Kriley Gulch areas Continued) | In a collaborative effort between Residents, County and USNF, the road to Williams Lake has been improved 30% making access to lake achievable for response vehicles, Community citizens (con) Are in the process of clearing and attempting to widen access to their privet drives. Sheep Creek and Kriley Gulch are still in need of work | 2003 start | 2 |
| | | | |
| Community Clean-up Williams Lake area | The Lemhi County working group along with citizens from area conducted a clean-up Fire Wise meeting on July 3 rd 2004, The citizens also signed up for fuels reduction projects on their private properties. This is a continual process, the citizens of the community are working hard to make their area safer and home more defendable against wildland fire. | 2004-2005 | 3 |
| Development of County evacuation plan. | The county emergency management department has developed a generalized evacuation plan for basic evacuation procedures, also individual high risk area evacuation plans are being developed, 3 of the 5 are complete. These plans are reviewed annually by the departments involved and up dated. The planes are also on record with the BLM and Forest Service | 2004-2005 | 3 |
| Small wood utilization | Studies for this have been minimal, however there has been some studies completed, study on utilization of slash from fuels reduction project to heat area departments is as of present being survived, the affordability of converting conventional heat sources to the other source, also small saw mile in area received grant to expand business for production of poles from small diameter fuels. | 2004-2005 | 2 |
| Project Coordinator | Lemhi County through grants from the Department of land have hired a assistant coordinator for the Wildland Urban Interface program. Job description included, finding grant for continual fuel reduction projects | 2003-2005 | 5 |

| | | | |
|--|---|------|---|
| Future Development | Through the county building department and planning and zoning the WUI and Emergency management have been actively involved in identifying problems that could arise from development in interface area. WUI department meet with developers or private resident to assist with question and evaluation on how to make their structures (homes fire wise, and fire resistant, also proper ingress and egress into new subdivisions. | 2005 | 3 |
| GIS mapping for private/Interface fuel | The county through grants have purchased new GPS tool along with mapping tool for mapping purposes of mapping hazardous fuels on private properties, the WUI Coordinator and Assistant Coordinator will be trained in the use of these tool as soon as training is available. Through corporative work with the BLM GIS mapping crew, mapping of the hazardous fuel in the Williams lake area is complete. | 2004 | 2 |
| Utilization of compact tiers at county landfill. | Compacted tires have been used as a fill/cushion in the placement of new pavement in the high school parking lot. Other uses for these tires are being pursued. | 2004 | 2 |
| | | | |
| | | | |
| | | | |
| | | | |
| | | | |
| | | | |
| | | | |
| | | | |
| | | | |
| | | | |
| | | | |

Evaluation and scoring identified projects will be done and reviewed on a yearly basis. The committee will also identify new and reprioritize existing projects.
 Evaluation of 2003/2004 projects completed: 11/20/2005

The Lemhi County Wildland Fire Interagency Group will meet every three months to discuss the progress of all identified projects and review progress of such. The Lemhi County Wildland Fire Interagency Group will also review and revise the Wildland fire mitigation plan annually. As updates are completed they will be approved by the Fuels Reduction committee, all update will be publicized on Lemhi County Website for public review. All minuets from meeting will be recorded and be the responsibility of the Emergency Service/WUI department. Updates for the county plan will be maintained through Emergency Services/WUI department.

| | |
|--------------------------|---------|
| Plan Developed Approved: | 04/2004 |
| Update | 12/2004 |
| Update/Revise Plan | 12/2005 |
| Update/Revision | 05/8/06 |

Lemhi County Fire Protection Volunteer Fire Departments

Lemhi counties fire departments are comprised of volunteer services.

Lemhi County Fire protection District #1/Salmon Volunteer Fire Department

North Fork Volunteer Fire Department

Leadore Volunteer Fire Department

Williams Lake Fire Department

Elk Bend Volunteer Fire Department.

North Custer Volunteer Fire Department

Volunteer Fire Department primary responsibility

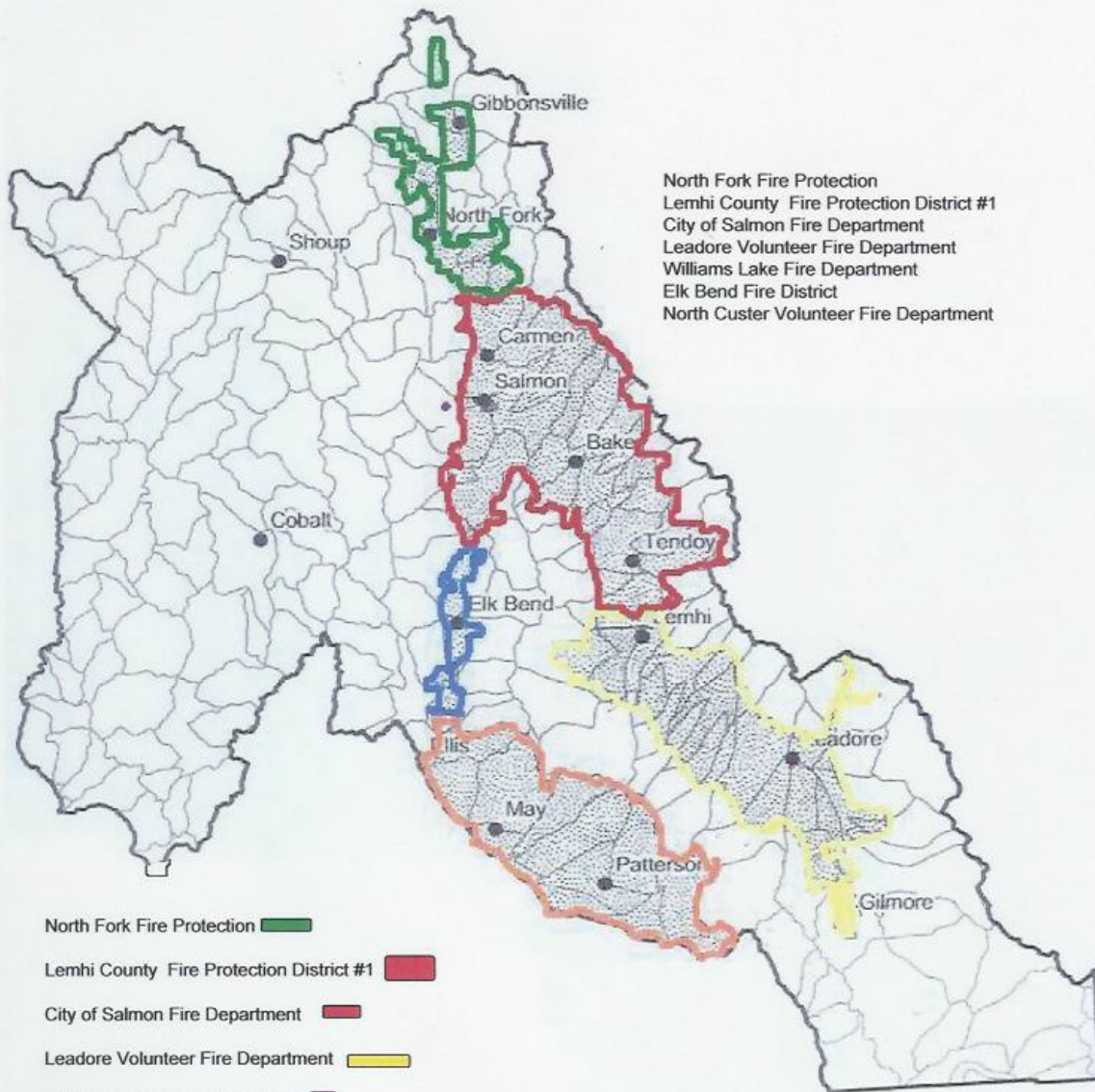
- Respond and suppress structure fire,
- Fire that caused threat to life or property
- Aid and assist in any and all disaster/hazardous material situations with in there scope of training,
- Mutual aid agreement with Bureau of Land Management, and Salmon/Challis National Forest Service to aid and respond in the capacity of there capabilities in the event of wildland fire, and treats to structures in the urban interface.

Department Resources

| Department | Capacity | Personnel | Equipment |
|--|-----------|-----------|---|
| Lemhi County Fire Protection District #1 | Volunteer | 31 | 1, 1000 gal Engine 1, 3000 gal Pumper 2, 250 gal Tender, 1, 500 gal Engine 1, Command Vehicle |
| North Fork Fire Protection District | Volunteer | 16 | 2, 1000 gal Engine 1, 750 gal Engine 1, 100galBrush/CAFFs |
| Leadore Volunteer Fire Department | Volunteer | 32 | 2, 500 gal. Engine 1, 1600 gal Tanker 1, 4000 gal Tanker 1, 4200 gal Tanker 1, 750 gal Rescue /Pumper |
| Elk Bend Fire Protection District | Volunteer | 16 | 1,1000 gal Engine 1, 250 gal Tenders |
| Williams Lake Volunteer Fire Department | Volunteer | 6 | 1, 250 gal Tender 1, Water fire craft |
| North Custer Fire Department | Volunteer | 6 | 1 1000 gal engine 1, 250 gal Tender |

Lemhi County

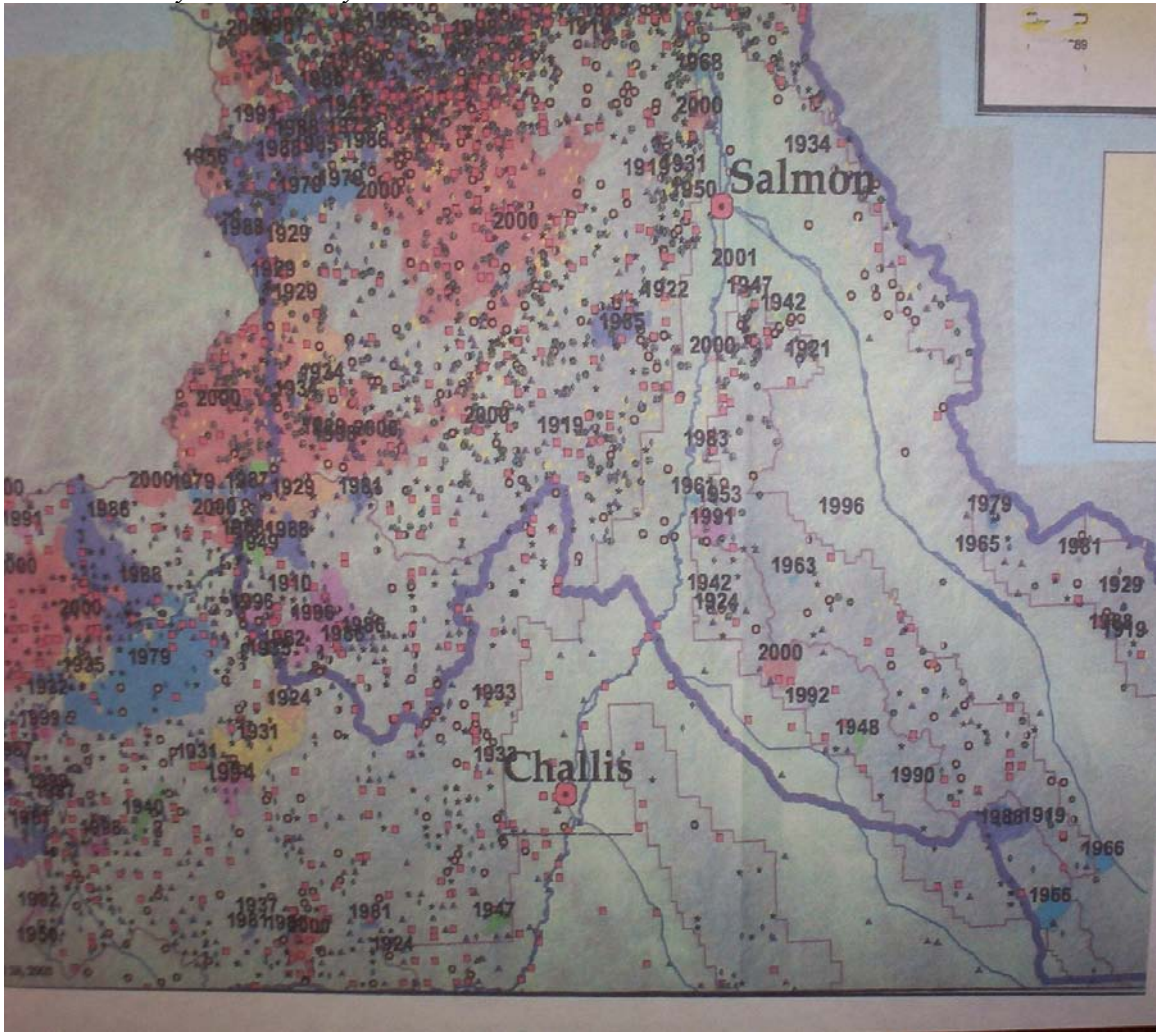
Fire Protection Districts



- North Fork Fire Protection █
- Lemhi County Fire Protection District #1 █
- City of Salmon Fire Department █
- Leadore Volunteer Fire Department █
- Williams Lake Fire Department █
- Elk Bend Fire District █
- North Custer Volunteer Fire Department █

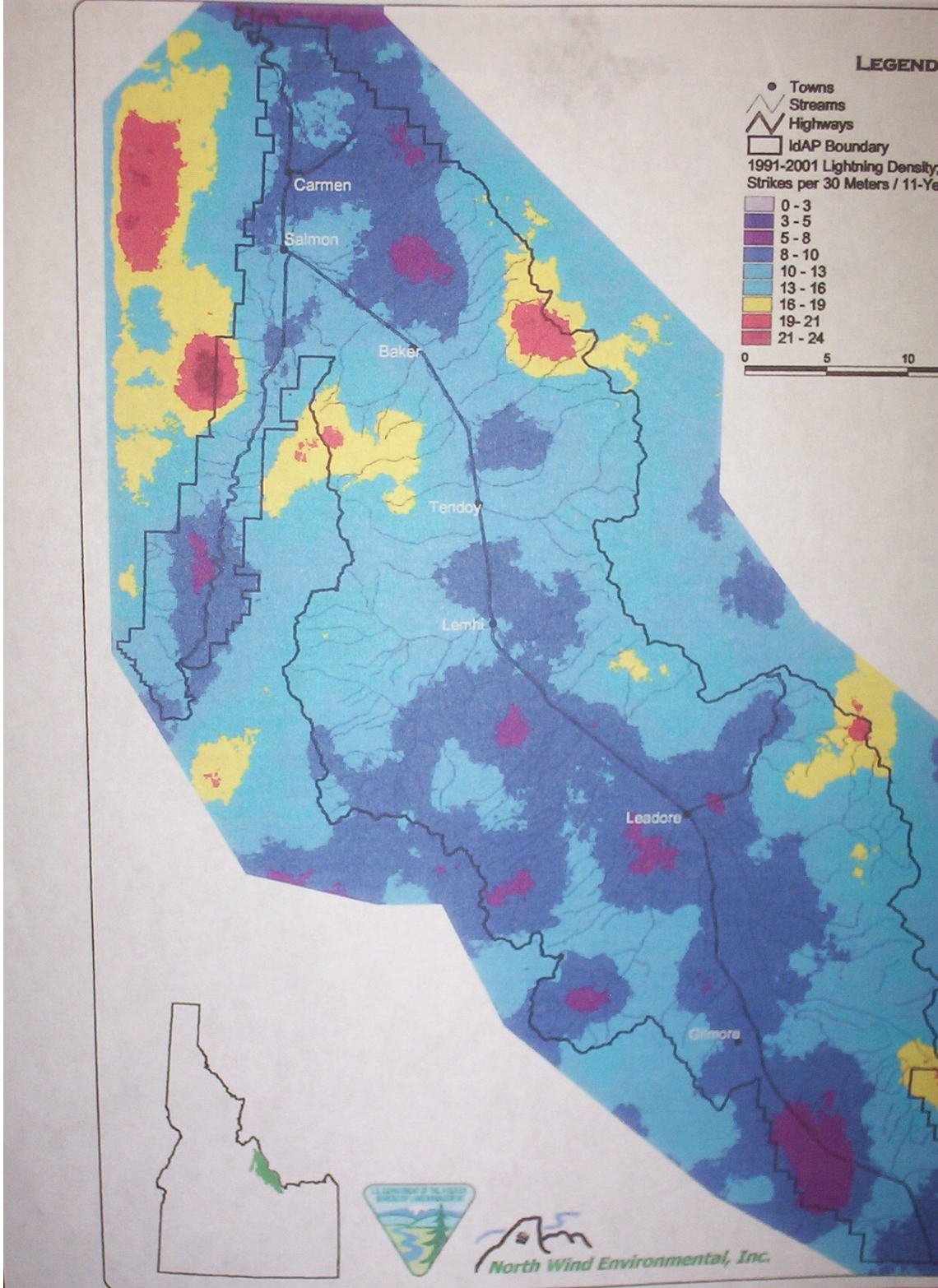
N
1:900,000

Lemhi County Fire History

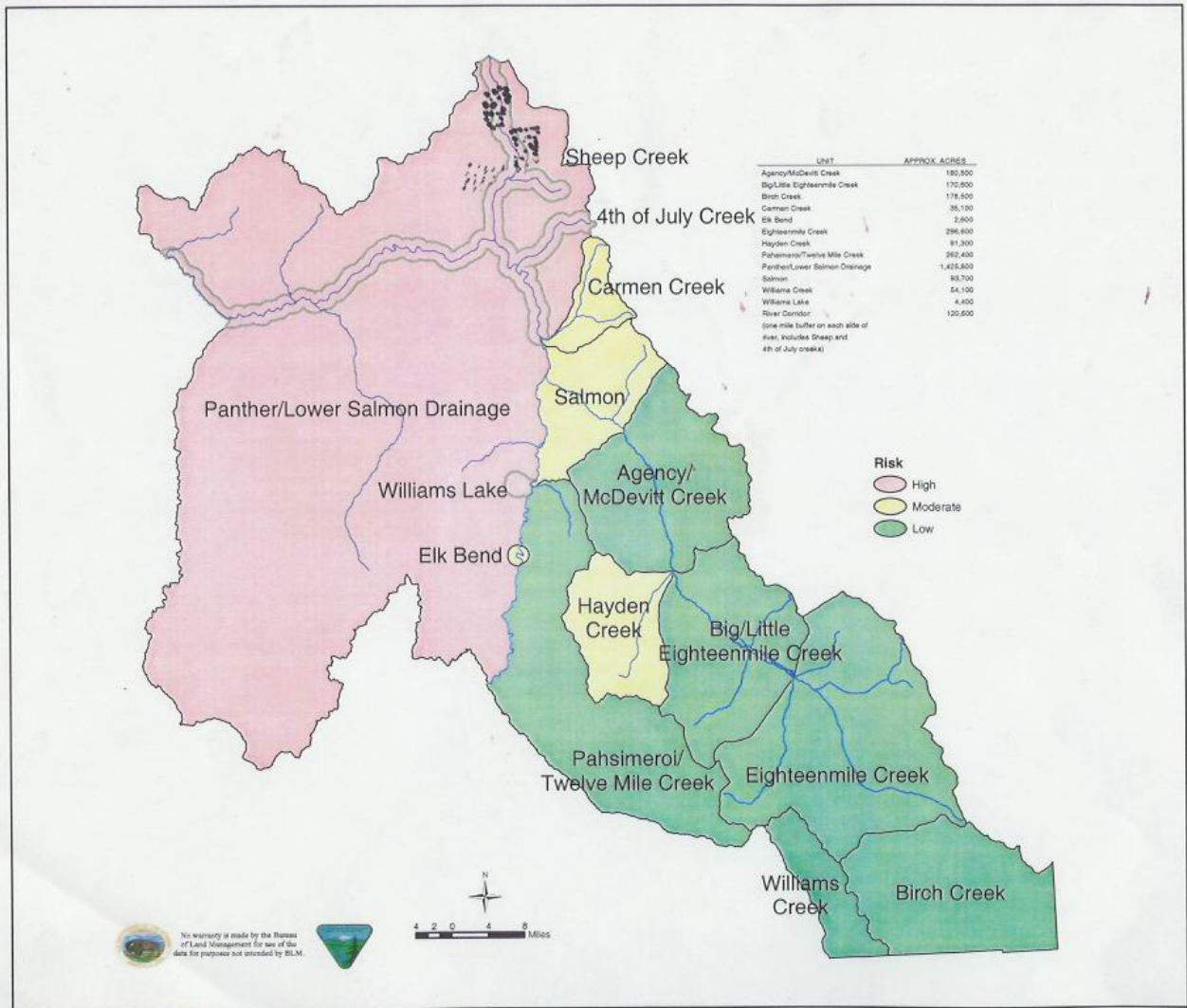


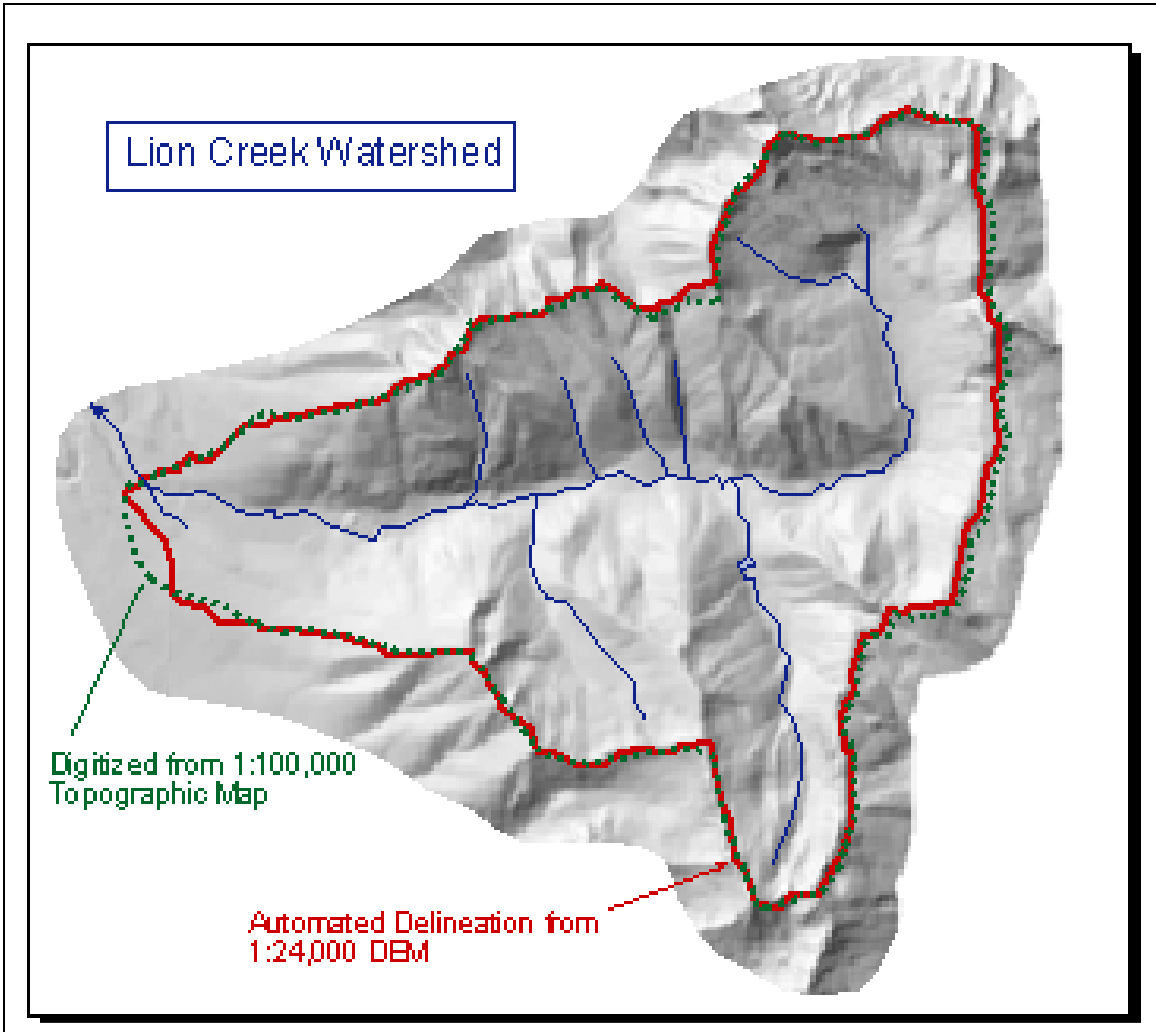
Lighting density grid

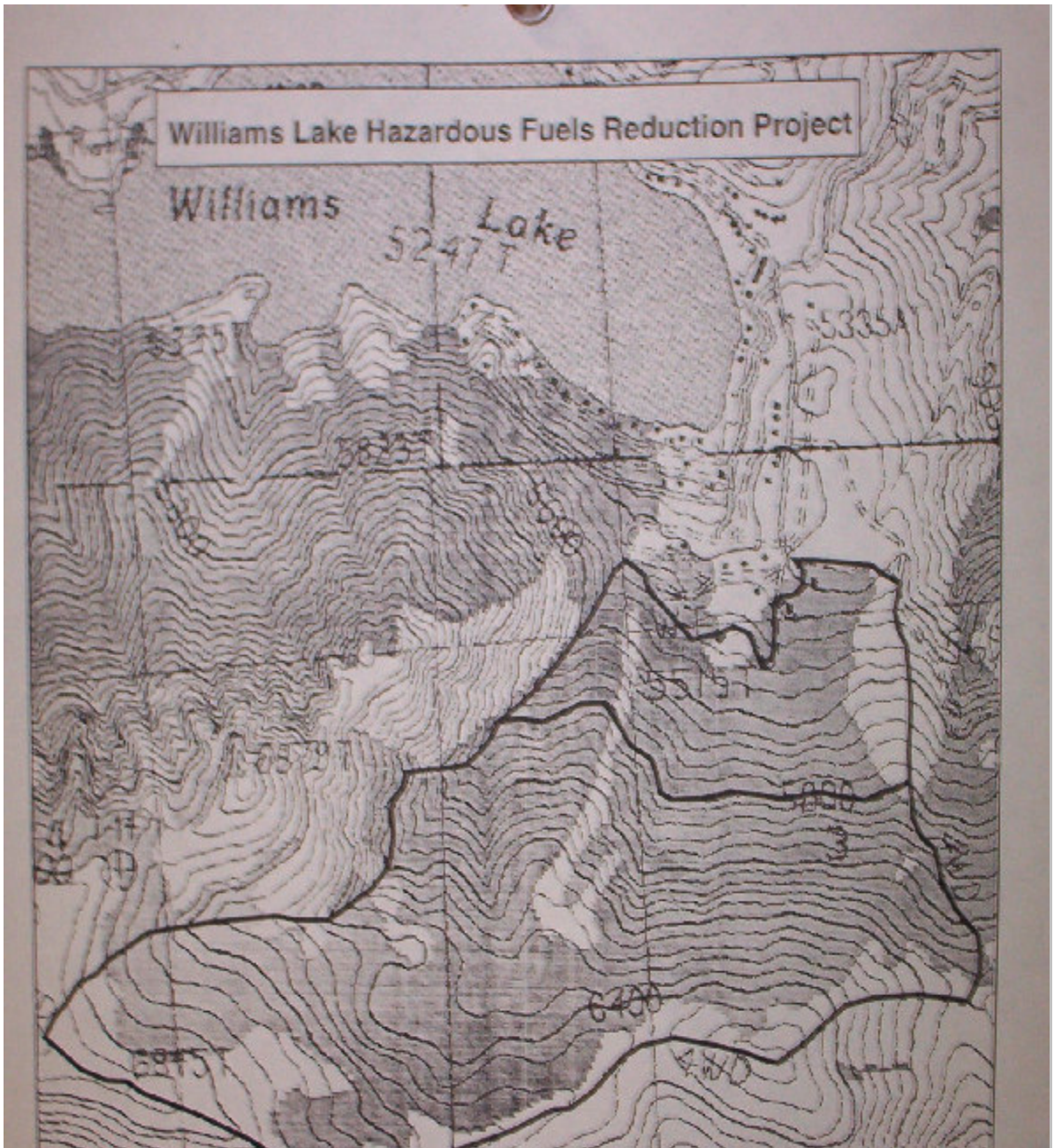
Figure 13. Lightning density grid of the IdAP area (1991-2001).



High Risk identification map







BLM Fuels Reduction Williams Lake Project 2003



Williams Lake Project 2003



Fuels Reduction Project 2003 Sheep Creek



Mistletoe diseased tree in Williams Lake Drainage. Mistletoe is invading several of the trees in the Williams Lake area

Fuels Reduction Committee during project field trip: Inspecting fuels reduction projects, and identifying future projects





Fuels Reduction Project Sheep Creek 2003

Tobias Fire August 2003



Lemhi County Public Guidelines For Wildland Fire Evacuation

Lemhi County Evacuation Guidelines

Evacuation guidelines are implemented when all of the following conditions exist:

- Persons or property are directly exposed to severe danger;
- The impact of danger is in progress or is imminent;
- The time lost in obtaining approval would prevent successful protective measures

AUTHORITY:

Once the IC of an event decides an evacuation may be necessary, he/she shall brief the Sheriff as soon as possible.

The decision to evacuate can only be made by the Sheriff (or his designee; i.e. one of his deputies).

Evacuations are **ADVISORY ONLY** AND CAN ONLY BE DONE ON A VOLUNTARY ACTION.

Voluntary evacuation is exempt during the following situations:

Broader incidents where danger is imminent provided that an Emergency Proclamation or a Disaster Declaration has been executed.

OPERATIONS

Inform and advise potential evacuees of the potential incident related danger.

Law enforcement personnel should always be aware of potential danger and ensure their own personal safety.

As a general rule, we will not spend time and resources arresting people who choose NOT to comply with evacuation orders.

Notification to Evacuate

- If circumstances permit, we will make an effort to notify residents in the affected area of the possibility of an evacuation.
- Unless dangerous circumstances prohibit the above, we will attempt to inform residents door-to-door.
- When door-to-door contact is not possible, deputies should use PA systems, horn and emergency overhead lights.

Evacuation Control Kits

Contents:

Evacuation information forms (100)

Fluorescent 1" ribbon (10 rolls)

Adhesive tape

Felt tip permanent pen/markers

Zip-lock bags (25-1 gallon capacity)

Considerations

A majority of evacuees will secure their own accommodations rather than stay in an Evacuation Center.

- Has Emergency Services been notified?
- Has Local Red Cross Disaster relief team been notified?
- Have Evacuation Centers been established?
- Where are they located?
- What are the best routes to travel to them?

Will transportation assistance be necessary for evacuees?

Procedures

- **Use evacuation control kit**
- *Contact residents door to door and inform them of the current evacuation status:
 - #1. Prepare to evacuate, or
 - #2. Evacuate (advice of evacuation route)
- * Give each resident an Evacuation Form.
- *If door-to-door is not possible, use the PA system
 - 1. Lights and siren may be necessary to gain attention
 - 2. Distribute Evacuation Forms as residents leave.
- * Mark residences with a long piece of fluorescent tape.
- If time permits, decisions to evacuate due to toxic gas/gases or some other extreme degradation of air quality should be coordinated with:
 - 1. District VII Health Department and
 - 2. National Weather service
- Establish:
 - #1. 24-hour roadblocks at point of entry and
 - #2. Security patrol in evacuated areas
- Evacuated areas are closed to ALL unauthorized persons.
- Begin planning for allowing residents to permanently return to evacuated area.

Evacuation Decision Factors

- Identify evacuation areas by using commonly known boundaries rather than using “distance from “ statements.
- When time permits, residents should receive individual briefings on the incident and evacuation procedures.

- When an area is evacuated we should anticipate residents in proximate areas might also be evacuated.
- Grouping specific evacuation orders (i.e. pregnant woman and children) will generate voluntary evacuation by others.
- Planning for logistics of returning residents back to their home should begin as soon as the evacuation order is issued.

Population Protection Guidelines

Evacuation Information for Local Citizens

Lemhi County Sheriffs Office is preparing a Population Protection Guideline for the citizens in this vicinity _____ . The guideline is contingency preparedness measures in the event of an evacuation in this area. The information on this sheet is being provided to you to inform you of the steps in the evacuation process and what may be necessary for you to do **IF** an evacuation occurs.

THREE STAGES OF EVACUATION

Stage 1- Alert and Warning (Voluntary Evacuation)

There is a high probability of the need to evacuate. Law enforcement personnel/representatives (Salmon Search and Rescue) will attempt to make personal visits to each resident and business in the threatened area.

Residents are responsible to make arrangements to move property and livestock. Some residents, primarily those with special needs or other concerns, should relocate during this stage of evacuation.

STAGE 2-Request/Order of Security

Evacuation is necessary in order to protect the lives of area occupants and emergency personnel responding to the incident. Law enforcement, Search and Rescue personnel shall attempt to convey this order/request to citizens door-to-door. If this is not practical or possible this information may be delivered via a Public Address System from a patrol vehicle. Should the latter method be employed the personnel will activate the emergency lights and sirens on the vehicle. By code in the State of Idaho no resident can be forced to evacuate his or her residence, unless ordered by the Governor. This is a voluntary action.

Roadblocks and 24-hour patrols by law enforcement will be instituted to protect property within the evacuated area.

STAGE 3- Return

Occupants are allowed to return as soon as it is safe.

EVACUATION ROUTES AND CENTERS:

A **Staging Area** has been established at: (State Location)

In the event of an evacuation you should report to this center and check-in to let officials know that you have made it safely out of the affected area. Following check-in you have the choice of staying at the center or going elsewhere for accommodations (i.e. friends, relatives or hotels). If the road is blocked, travel in the opposite direction and call the Lemhi County Sheriff's Office (**911**) as soon as possible. Please provide the name and phone number of the place to which you are relocating. We will need a point of contact and a phone number.

Keep Informed. The success of this guideline requires the cooperation and assistance of informed occupants. Stay tuned to local media outlets for updates. Listen and ask questions when an emergency service representative contacts you.

Plan Ahead. Preplanning can help you avoid last minute frustrations. Plan where you will go and WHAT YOU WILL TAKE when you evacuate.

WARNING

This area may be evacuated

Because of: _____

By the order of the Lemhi County Sheriff **Date:** _____ **Time:** _____

Evacuation Center _____

Evacuee Information Form NO. _____

COMPLETE THE FOLLOWING:

NAME: _____

ADDRESS: _____

NUMBER IN FAMILY: _____

WHEN EVACUATED, GO TO: _____

Even if you plan to stay elsewhere, please check in at the nearest evacuation center. If you do not plan to stay at the center please fill out the following information

We will be staying at (name/physical address)

City/State:

In the case of an actual evacuation, return this form to the nearest roadblock so we are assured of your safety. If you decide to pre-evacuate, please return this form to Lemhi County Sheriff's Office or call 208-756-4203 and provide the above information. There are 3 stages in the evacuation process. Personnel from the Sheriffs Office, Salmon Search and Rescue, or Designee by Sheriffs Office will attempt to contact you and keep you informed as to the current stage of evacuation in your area.

Evacuation Package

Door-to-Door Contact Checklist

- _____ 1. Identify yourself and briefly explain the nature of the emergency.
- _____ 2. Advise occupants to evacuate or to be prepared for evacuation. Tell them what the signal will be if evacuation becomes necessary.
- _____ 3. If time permits, have occupants complete Evacuee Information Form
If time does not permit, tell evacuees to complete the Form at the evacuation Center.
- _____ 4. Inquire if occupants have transportation or if anyone needs special assistance. Advise to take pets and prescription drugs,
- _____ 5. Instruct occupants on routes to use, precautions, and the location of the Evacuation Center.
- _____ 6. If no one answers the door, ask neighbors for information. Obtain approval for forced entry if necessary to aid children, bedridden, handicapped, or elderly.
- _____ 7. Complete Evacuation Refusal Form for persons refusing to evacuate. Log name and address of home where no one answers. Report these names and address to your Supervisor.
- _____ 8. Mark evacuated residences with long strip of ribbon from Evacuation Kit.
- _____ 9. Mark area with WARNING-AREA EVACUATED notices from the Evacuation Kit.
- _____ 10 Maintain log of residents and address contacted.

Public Address Contact Checklist - When Door-to-Door Contact is NOT Possible

- _____ 1. Incident Commander shall approve the message before used.
Content will vary with the circumstances. Keep it short and to the point.
- _____ 2. Select a broadcast spot for good coverage. Consider wind direction and PA carrying distance.
- _____ 3. Stop the vehicle and give a steady tone on the siren for 10 to 15 seconds.
Wait 10 to 15 seconds.
- _____ 4. Give the message TWICE. Use a slow command voice. Do not shout for amplification.
- _____ 5. Sample: “YOUR ATTENTION PLEASE. YOUR ATTENTION PLEASE. THE _____ (County Sheriff) HAS ADVISED THAT THIS NEIGHBORHOOD BE EVACUATED IMMEDIATELY, BECAUSE OF EXTREME DANGER FROM _____ LOCK YOUR HOMES AND PROCEED ON _____ (route and directions) TO _____ (Evacuation Center) PLEASE EVACUATE NOW.”
- _____ 6. Have the team patrol neighborhoods to maintain order and provide assistance to those with no transportation.
- _____ 7. Hand out Evacuee Information Forms as residents leave the area.
- _____ 8. Mark each dwelling, known to be evacuated, with a long piece (approx. 36’) of reflective ribbon.
- _____ 9. Mark area with “WARNING AREA EVACUATED” notice from the Evacuation Kit

EVACUATION CONTACT LOG

EVACUATION STAGE: _____

INCIDENT: _____

LOCATION: _____

OFFICER(S): _____

| Date and Time contact made | Name | Physical | Phone | Adult # |
|----------------------------|------|----------|-------|---------|
| | | | | |
| | | | | |
| | | | | |
| | | | | |
| | | | | |
| | | | | |
| | | | | |
| | | | | |
| | | | | |
| | | | | |
| | | | | |
| | | | | |
| | | | | |
| | | | | |
| | | | | |
| | | | | |
| | | | | |
| | | | | |
| | | | | |
| | | | | |
| | | | | |
| | | | | |
| | | | | |
| | | | | |
| | | | | |
| | | | | |
| | | | | |
| | | | | |
| | | | | |
| | | | | |
| | | | | |
| | | | | |
| | | | | |
| | | | | |
| | | | | |
| | | | | |
| | | | | |
| | | | | |
| | | | | |
| | | | | |
| | | | | |
| | | | | |
| | | | | |
| | | | | |
| | | | | |
| | | | | |
| | | | | |
| | | | | |
| | | | | |
| | | | | |

Lemhi County Sheriff's Office
Evacuation Refusal/Waiver

____ I, _____, have been advised by
The Lemhi County Sheriff's Office to evacuate this property/location,
due to extreme danger, which is evident.

____ I, _____, **REFUSE** to evacuate
this property/location and acknowledge that I know and understand the hazards.
If, I remain or enter this area, I hold harmless the "agency" responsible for
evacuation.

____ I, _____, will evacuate this property/
location, however, I wish to return to check my property from time to time. I
acknowledge that I know and understand the hazard. I hold harmless the
"agency" responsible for evacuation. I understand that if I do not check in and
out at the same Check Point each time I go to and from my property, I may
not be notified if the danger increases.

Address/Location where individual was advised to leave (list below):

Person **REFUSING** to evacuate (list information)

Print name: _____

Date of Birth: _____ Social Security # : _____

Next of Kin (print name): _____

Address: _____

Phone #: _____

Signature: _____

Date: _____

North Fork Evacuation Plan

PREPARED BY:

*Dick Ward – Leadore District Ranger
Janet -Nelson – Lemhi County Emergency Coordinator
Dan Garcia – North Fork District Fisheries Biologist
Barbara Levesque – Salmon-Cobalt District Planner*

AGENCY:

*United States Forest Service
Lemhi County*

THIS PLAN CONTAINS:

- Evacuation Authorization*
- Threats, Area & Objectives*
- Evacuation Stages*
- Anticipated Resource Requirements*
- Supplemental Information*
- Appendices*

THREATS TO HEALTH AND SAFETY:

The North Fork Evacuation Area includes all lands north of the Salmon River in the North Fork drainage, adjacent drainages in Idaho from Tower Creek to Lost Trail Pass, and from Shoup to Lost Trail Pass. This area of the state has had little rain and is experiencing drought conditions. Temperatures are forecasted to stay above normal and precipitation forecasted to remain below normal. No change in weather is expected for the next five days. Smoke and airborne particles may pose a health threat to some or all persons within the affected areas. The plan is being prepared to ensure a safe and orderly response to threat from fires burning in Clear Creek to the west and in Montana to the north or east, if necessary.

OBJECTIVES:

- ❑ To identify residences, general recreation areas, businesses, public buildings and other areas from which occupants and property may need to be evacuated.*
- ❑ To locate and identify special concerns of the incident staff to include persons with conditions requiring extra care, livestock or other property requiring specialized consideration and potentially hazardous materials.*
- ❑ To identify resources necessary to accomplish an evacuation.*
- ❑ To provide for the timely, safe, orderly evacuation of affected areas as ordered by the Incident Commander of the Clear Creek Fire.*

PROTECTION STAGES

STAGE 1: PRECAUTIONARY NOTIFICATION and BRIEFINGS of persons within the affected area(s). Regular incident status briefings provided for potential evacuees at pre-designated sites. This stage will be implemented under the following conditions:

Fire has a high potential of reaching structures within the designated area in 36 hours.

STAGE 2: Evacuation WARNING. Good probability of a need to evacuate. Recommend movement of persons requiring extraordinary care, large mobile property and livestock (if feasible). Emergency fire safety zones will be signed. This stage will be implemented under the following conditions:

Fire has a high potential of reaching structures within one or more of the designated zones in 24 hours.

STAGE 3: Evacuation REQUEST. Occupants of the affected area(s) are asked to leave within a specified time period, by pre-designated route(s), and report to the evacuation center (?). Perimeter roadblocks are established. Operations Section Chief and Sheriff's Office Commander will be in direct communication (?). This stage will be implemented under the following conditions:

Fire has a high potential of reaching structures within one or more of the designated zones in 12 hours

STAGE 4: Evacuation ORDER. A disaster declaration or emergency proclamation has been issued and authority granted for the Incident Commander to order the evacuation. Access to the affected area is prohibited to anyone not authorized by the Incident Commander or designee. Operations section Chief and Sheriff's Office Commander will be in direct communication (?). This stage will be implemented under the following conditions:

Fire has a high potential of reaching structures within on or more of the designated evacuation areas in 8 hours.

STAGE 5: Perimeter roadblocks maintained and evacuated area(s) patrolled 24 hours a day. Regular incident status briefings provided for evacuees at pre-designated sites.

STAGE 6: Evacuees allowed to return. Hardship and special needs are evaluated.

This plan includes an appendix describing the types of environmental or fire behavior conditions that would cause the Incident Commander to implement various protection stages.

IMPLEMENTATION

If implementation occurs, evacuees needing a temporary safe haven are encouraged to go to the LEMHI COUNTY FAIR GROUNDS. A total of SEVEN EMERGENCY FIRE SAFETY ZONES will be designated along the Salmon River Road and Highway 93 for evacuees to use on a temporary basis. These zones will be posted with signs stating “Fire Safety Zone”.

I. *EMERGENCY IMPLEMENTATION PROCEDURE: In the event an evacuation is requested or ordered by the Incident Commander and time does not permit personal notification of affected persons, the following procedure will be utilized:*

- The Incident Commander for the Clear Creek Fire will notify the Sheriff through the 911 Dispatch Center with instructions to respond to a designated evacuation staging area. In the case of threats from fires in Montana, the Incident Commander for the Clear Creek Fire would still assume the role in requesting or ordering evacuations of the North Fork area.*
- The Sheriff’s Office will notify residences needing to evacuate by phone, and announce the need to evacuate using P.A. systems from sheriff’s vehicles driving through evacuation areas.*

II. *REFUSAL RESPONSE PROCEDURE: The recommended response for persons refusing to cooperate with evacuation requests or order is:*

Thoroughly brief the resisting person(s) on dangers associated with remaining in the threatened area. Obtain identifying and next-of-kin information. Allow person(s) to remain at own risk. Arrest in cases where the resisting person(s) endangers others or violates criminal statute.

III. *EVACUATION AREAS: Ten areas to be evacuated have been designated under this plan. Each area will be assigned to a sheriff’s deputy for notification of evacuation. These areas are:*

- A. Highway 93 North from North Fork to Tower Creek, and Kriley Gulch.*
- B. North Fork to Shoup*
- C. Fourth of July Creek*
- D. Tower Creek*
- E. North Fork to Sheep Creek, both sides of the river.*
- F. Hull Creek and Hughes Creek*
- G. North Fork River from Sheep Creek to Royal Elk Ranch*
- H. Dahlonga Creek*
- I. Sheep Creek*

IV. EVACUATION ROUTES AND EMERGENCY FIRE SAFETY ZONES:

In case of evacuation, all evacuees are encouraged to follow Highway 93 South to the Lemhi County Fairgrounds.

□ **PRIMARY ROUTES:**

- 1) Highway 93 South to the Lemhi County Fairgrounds.**
- 2) Highway 93 North to the Newland Ranch located one mile west of the North Fork Ranger District on the Salmon River Road.**

□ **SECONDARY ROUTES:**

- 1) Highway 93 North to Lost Trail Pass and east on Highway 43 to Wisdom.**
- 2) Dahlenega Creek Road (#079) over Big Hole Pass to Wisdom.**

- **STAGING AREAS:** *In the event that the primary and secondary evacuation routes are blocked by fire or heavy smoke, the following local areas have been established as EMERGENCY FIRE SAFETY ZONES. Arrangements to use these areas will be made immediately and signs indicating “Emergency Fire Safety Zones” will be erected in Stage 2. The fire safety zones are:*

Zone 1: *Spring Creek pasture approximately 15 miles west of North Fork and two miles east of Spring Creek; recently used for the Clear Creek Fire as Spring Creek Helibase.*

Zone 2: *Newland Ranch pastures approximately one mile west of North Fork.*

Zone 3: *Terry Smith pastures approximately ten miles north of North Fork across from Lick Creek.*

Zone 4: *Cliff Cummings Jr. pasture across from the mouth of Trail Gulch; approximately three miles north of North Fork.*

Zone 5: *Luther Davis pasture in Holcomville; approximately three miles south of North Fork.*

Zone 6: *Winn Turner pasture across from the Redrocks campground; approximately nine miles south of North Fork; adjacent to Highway 93 North.*

Zone 7: *John Heiser irrigated pasture at the mouth of Tower Creek between Highway 93 North and the Salmon River; approximately eleven miles south of North Fork.*

V. *INFORMATION AND TRAFFIC CONTROL POINTS:*

- *INFORMATION LOCATION POINTS: Roadblocks will be established for all areas at Stage 3 or higher. Roadblocks and information points will be located at the intersection of Lost Trail Pass and Highway 43; the Broken Arrow Restaurant; the Indianola Helibase; and on Highway 93 North at the County Fairgrounds.*
- *TRAFFIC CONTROL POINTS: Traffic control points will be established for all areas at Stage 3 and higher; from Highway 93 South from the Lost Trail Pass to Tower Creek.*

VI. *PRE-EVACUATION ACTIVITIES:*

Teams will complete pre-evacuation contact data sheets as time and circumstances permit.

Yes No

Resident evacuation forms will be provided during initial contact during Stage 2.

Yes No

Resident evacuation forms will be provided at exit roadblocks.

Yes No

Incident information representative will establish a briefing site for residents.

Yes No

Completed resident evacuation forms should be turned in at established evacuation centers (Lemhi County Fairgrounds and Newland Ranch)

VII. RESOURCE LOCATIONS:

- ❑ *Evacuation command center will be located at the Fife Incident Command Post. The staging area will be located at the Lemhi County Fairgrounds.*
- ❑ *Evacuation reporting and briefing site will be located at the Lemhi County Fairgrounds.*
- ❑ *Assistance/Evacuation center providing food, overnight shelter, and family assistance will be located at the LDS Stake Center in Salmon, South Daisy Street (behind the Junior High School).*
- ❑ *Mobile property and livestock holding area will be at the Lemhi County Fairgrounds.*

VIII. COMMUNICATIONS: Lemhi County Law Enforcement will use Forest Net on Stein Repeater. (???????????)

- ❑ *With Affected Public: Incident information staff, briefing boards, area media outlets.*
- ❑ *Organizational: Regular briefings by incident management staff and attached communication plan.*

IX. DESIGNATED MARKINGS: Appropriate closure signs will be posted at the perimeter, road closure barricade sites, and along Highway 93. Signs and flagging will designate emergency fire safety zones.

ANTICIPATED RESOURCE REQUIREMENTS

I. CONTACT – MAPPING TEAMS: 1

II. INFORMATION AND TRAFFIC CONTROL POINTS: 4 SITES

III. SECURITY – EVACUATED AREA

IV. SECURITY – INCIDENT COMMAND POST: 1

V. EVACUATION CENTER – STAFFED BY RED CROSS

VI. EVACUATION COMMAND – CONTACT

- Stage 1 – 1*
- Stage 2 – 20*
- Stage 3 – 20*
- Stage 4 – 20*

VII. TRAFFIC CONTROL DEVICES: Signs, barricades, cones, pylons, lights, etc. will be provided by Lemhi County Road Department, Forest Service, and Idaho Department of Transportation.

VIII. OTHER RESOURCES REQUIRED: Parking attendants will be required at all emergency fire safety zones.

IX. OF SPECIAL NOTE (Uniform requirements, vehicle accessories, etc.): All personnel working the evacuation will be required to wear Nomex clothing. All emergency safety zone-parking attendants will wear orange safety vests.

X. EVACUATION COSTS WILL BE CHARGED TO:

| <i>Incident Jurisdiction</i> | <i>Responsible Agency</i> | <i>Requesting Agent</i> |
|----------------------------------|-------------------------------|-----------------------------|
|----------------------------------|-------------------------------|-----------------------------|

***Lemhi County Sheriff's Office
Evacuation Refusal/Waiver***

____ I, _____, have been advised by
The Lemhi County Sheriff's Office to evacuate this property/location,
due to extreme danger, which is evident.

____ I, _____, **REFUSE** to evacuate
this property/location and acknowledge that I know and understand the hazards.
If, I remain or enter this area, I hold harmless the "agency" responsible for
evacuation.

____ I, _____, will evacuate this property/
Location, however, I wish to return to check my property from time to time. I
acknowledge that I know and understand the hazard. I hold harmless the
"agency" responsible for evacuation. I understand that if I do not check in and
out at the same Check Point each time I go to and from my property, I may
not be notified if the danger increases.

Address/Location where individual was advised to leave (list below):

Person **REFUSING** to evacuate (list information)

Print name: _____

Date of Birth: _____ Social Security # : _____

Next of Kin (print name): _____

Address: _____

Phone #: _____

Signature: _____

Date: _____

PINE CREEK RANCH
EVACUATION PLAN

6-9-05

Evacuation guidelines are implemented when all of the following conditions exist:

- Persons or property are directly exposed to sever damage;
- The impact of danger is in progress or is imminent;
- The time lost in obtaining approval would prevent successful protective measures.

AUTHORITY:

Once the Incident Commander (Camp Councilor head) of an event decides an evacuation may be necessary, he/she shall brief the staff as soon as possible.

The decision to evacuate can only be made by the Sheriff and the IC (camp councilor head.)

Operation

Inform and advise potential evacuees of the potential incident related danger.

If circumstances permit, make an effort to notify campers in the effected area of possibility of an evacuation.

Unless dangerous circumstances prohibit the above, attempt to inform residents door-to-door.

Identify a standardized method (signals/warnings) of evacuation warning. (Ring bell, warning system device, siren.)

Identify central meeting area (away from the danger area) open space, if possible easily accessible.

Have transportation parted at assembly area, gassed and ready to go. Park vehicle pointing out.

Identify evacuation routs; **One-way traffic road, Pine Creek road drive to Salmon River road to Shoup.**

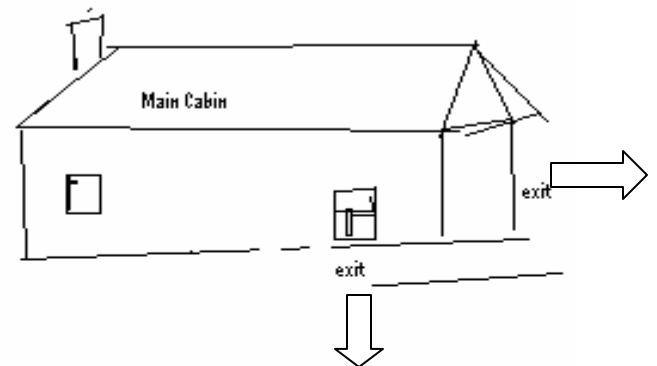
Have all residents (campers) have and evacuation kit (flash light, medications, shoes, extra underclothes ect.) available and easy reach.

Have a 72 hour kit available for extended evacuation period.

Have an accountability system in place (name check-off sheet) have campers team up in pairs, hold hands if necessary.

An evacuation plan is only good if everyone is aware of it, you need to practice.

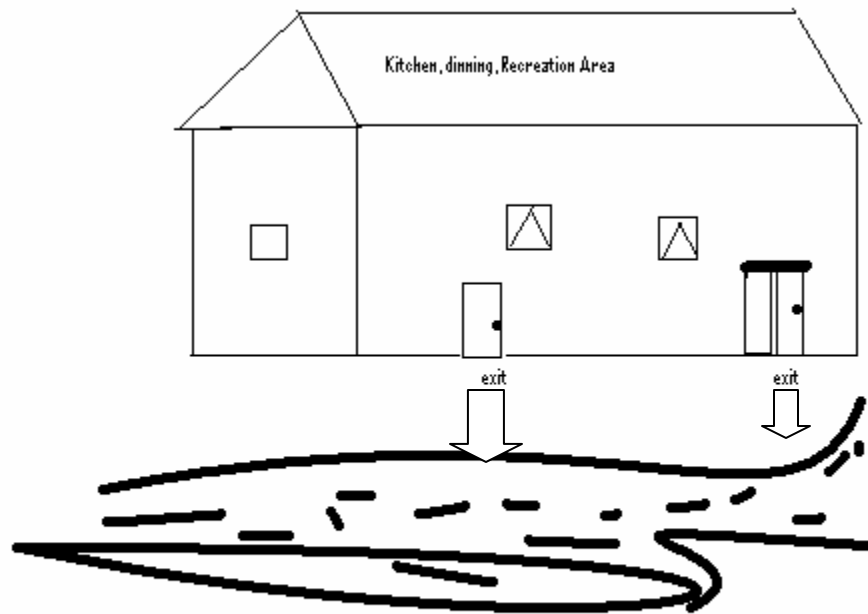
Pine Creek Girl Scout Ranch Structures



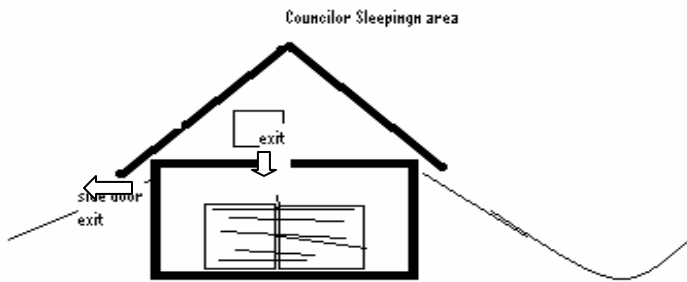
Evacuation from main cabin : Two primary exits : Priority exit front door , secondary exit back door,
Available exit at last resort window off of front of cabin.



Old picture

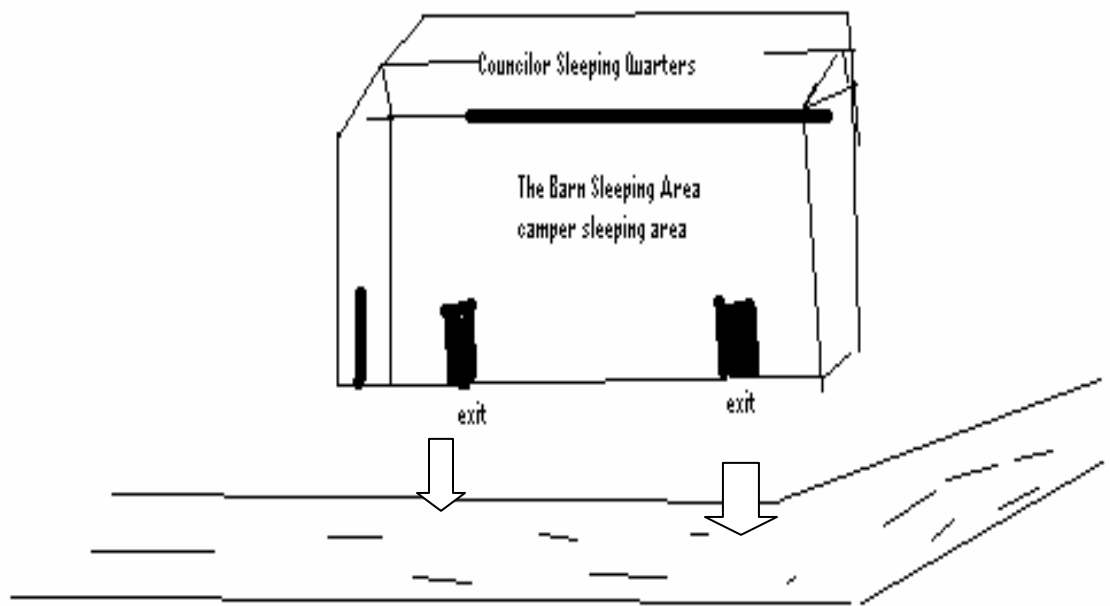


Evacuation Dining, Kitchen, Recreation area.
Two exits. One on either end of building use door closest to you
area



Evacuation of Councilor sleeping area, primary exit, door back of cabin, on to upper landing, secondary exit window facing road, need ladder for exit, 8' drop (emergency only)

Evacuation of The barn Sleeping area: Councilors will go to lower level, Campers will meet at the door closest to their bunk and wait for councilor. They will all evacuate together. Meet at predestinated area (Flag pole).



Tower Creek Structure Protection Plan

1/26/06

This plan is designed to provide a general overview of the structure assessments and structure protection needs in the Tower Creek Drainage. For the purpose of this plan Tower Creek drainage has been divided into three separate sections: 1) Lower Tower, which is defined as the section of the drainage from Highway 93 north to the location where the East Fork of Tower Creek separates from the Main Tower Creek Drainage.

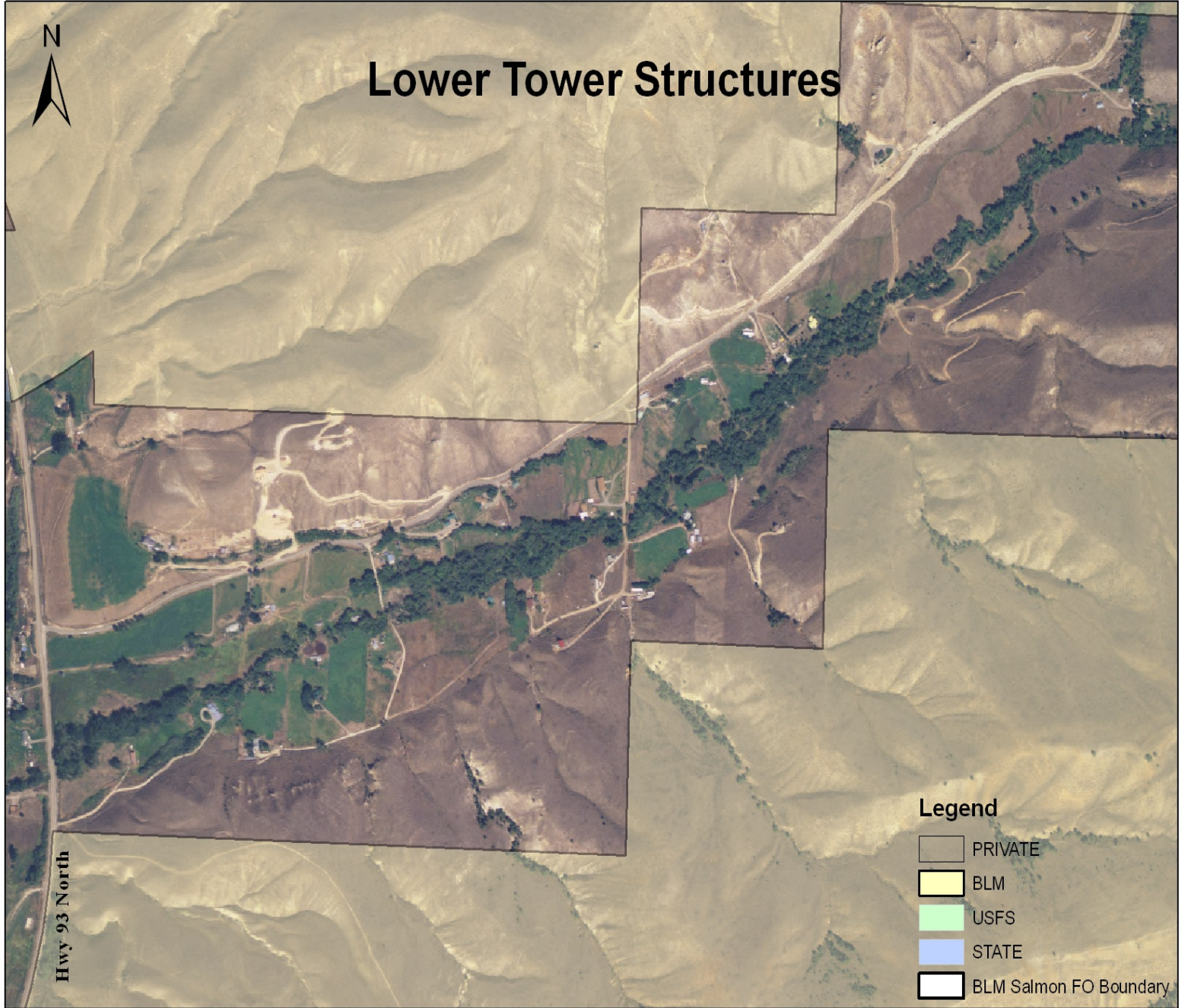
2) East Tower, this section defined as the entire East Fork drainage. 3) Upper Tower, this section is the section of the main Tower Creek drainage from it's intersection of the East Fork up stream to include all of the upper Tower Creek drainage. Each section can be seen on the enclosed Tower Creek vicinity map, along with a more detailed map of each section.

Lower Tower Creek

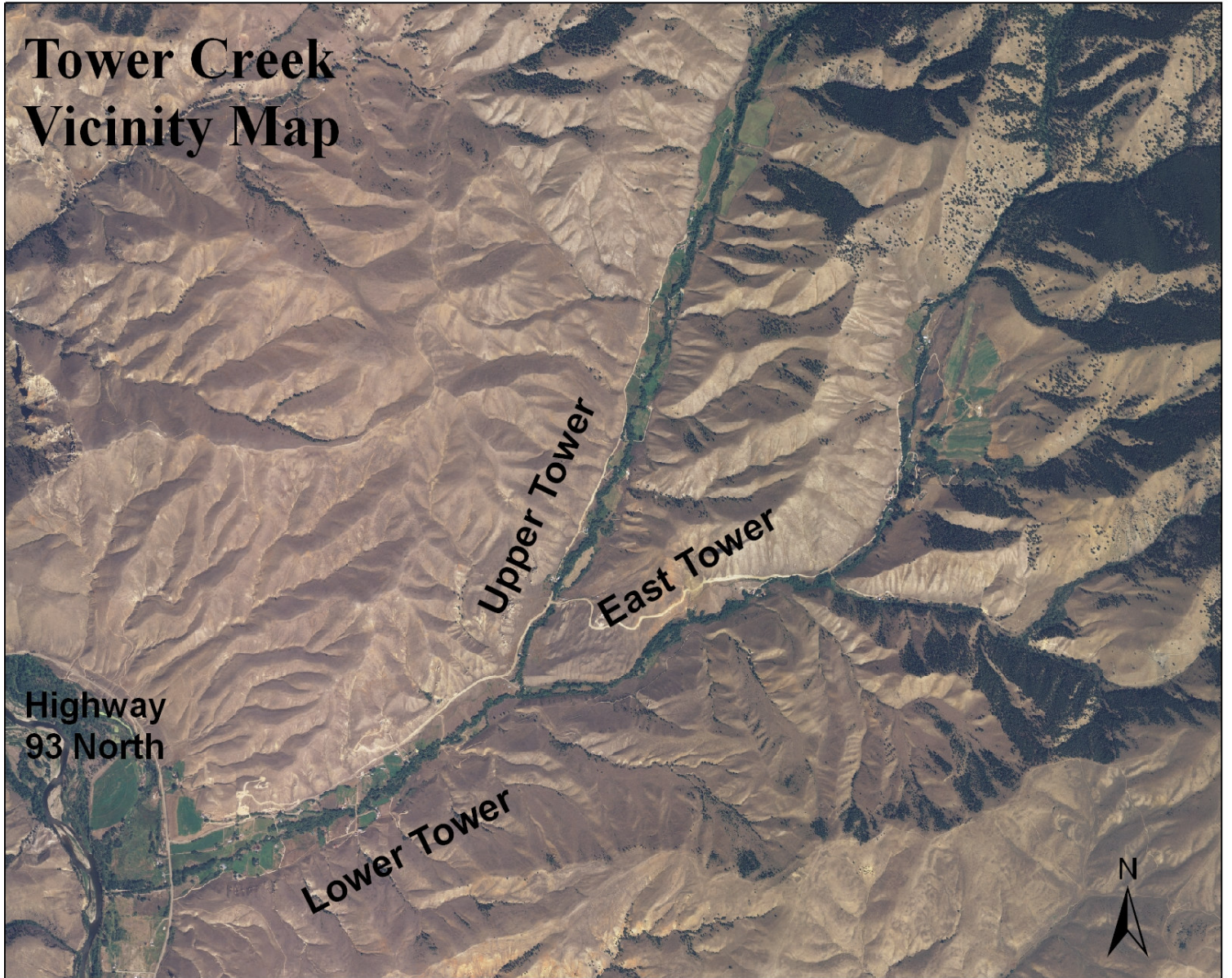
Lower Tower Creek currently has 27 primary structures within the drainage. These structures are residential homes some with numerous outbuildings. The majority of the structures lie in the drainage bottom and are surrounded by irrigated fields. There are however, at least 10 structures that lie on the edges of the irrigated fields (primarily on the south side of the drainage) or out of the bottom of the drainage and have no irrigated fields adjacent to them. The primary fuels in the area are grass and sage (Fuel Model 2), and the topography as you leave the drainage bottom to the north and south is characterized by moderately steep slopes with numerous spur drainages which run perpendicular to the Tower Creek drainage.

Lower Tower Creek Structure Protection Resources

| Resource | Quantity |
|---------------------|---------------|
| Division Supervisor | 1 |
| Taskforce Leader | 1 |
| Type 4 Engine | 1 Strike Team |
| Crew – Type II IA | 1 |
| | |
| | |
| | |
| | |
| | |
| | |
| | |
| | |



Tower Creek Vicinity Map



Lemhi County
***Hull Creek Hughes Creek area Evacuation
Guideline***

Residential Identification.

Lemhi County Guide for Wildland Fire Residential Evacuation

North Fork Evacuation Plan

THIS PLAN CONTAINS:

- ❑ ***Evacuation Authorization***
- ❑ ***Threats, Area & Objectives***
- ❑ ***Evacuation Stages***
- ❑ ***Anticipated Resource Requirements***
- ❑ ***Supplemental Information***

THREATS TO HEALTH AND SAFETY:

The North Fork Evacuation Area includes all lands north of the Salmon River in the North Fork drainage, adjacent drainages in Idaho from Tower Creek to Lost Trail Pass, and from Shoup to Lost Trail Pass. This area of the state has had little rain and is experiencing drought conditions. Temperatures are forecasted to stay above normal and precipitation forecasted to remain below normal. No change in weather is expected for the next five days. Smoke and airborne particles may pose a health threat to some or all persons within the affected areas. The plan is being prepared to ensure a safe and orderly response to threat from fires burning in Clear Creek to the west and in Montana to the north or east, if necessary.

1

OBJECTIVES:

- ❑ *To identify residences, general recreation areas, businesses, public buildings and other areas from which occupants and property may need to be evacuated.*
- ❑ *To locate and identify special concerns of the incident staff to include persons with conditions requiring extra care, livestock or other property requiring specialized consideration and potentially hazardous materials.*
- ❑ *To identify resources necessary to accomplish an evacuation.*
- ❑ *To provide for the timely, safe, orderly evacuation of affected areas as ordered by the Incident Commander of the Clear Creek Fire.*

PROTECTION STAGES

STAGE 1: PRECAUTIONARY NOTIFICATION and BRIEFINGS of persons within the affected area(s). Regular incident status briefings provided for potential evacuees at pre-designated sites. This stage will be implemented under the following conditions:

Fire has a high potential of reaching structures within the designated area in 36 hours.

STAGE 2: Evacuation WARNING. Good probability of a need to evacuate. Recommend movement of persons requiring extraordinary care, large mobile property and livestock (if feasible). Emergency fire safety zones will be signed. This stage will be implemented under the following conditions:

Fire has a high potential of reaching structures within one or more of the designated zones in 24 hours.

STAGE 3: Evacuation REQUEST. Occupants of the affected area(s) are asked to leave within a specified time period, by pre-designated route(s), and report to the evacuation center (?). Perimeter roadblocks are established. Operations Section Chief and Sheriff's Office Commander will be in direct communication (?). This stage will be implemented under the following conditions:

Fire has a high potential of reaching structures within one or more of the designated zones in 12 hours

STAGE 4: Evacuation ORDER. A disaster declaration or emergency proclamation has been issued and authority granted for the Incident Commander to order the evacuation. Access to the affected area is prohibited to anyone not authorized by the Incident Commander or designee. Operations section Chief and Sheriff's Office Commander will be in direct communication (?). This stage will be implemented under the following conditions:

Fire has a high potential of reaching structures within on or more of the designated evacuation areas in 8 hours.

STAGE 5: Perimeter roadblocks maintained and evacuated area(s) patrolled 24 hours a day. Regular incident status briefings provided for evacuees at pre-designated sites.

STAGE 6: Evacuees allowed to return. Hardship and special needs are evaluated.

This plan includes an appendix describing the types of environmental or fire behavior conditions that would cause the Incident Commander to implement various protection stages.

IMPLEMENTATION

If implementation occurs, evacuees needing a temporary safe haven are encouraged to go to the LEMHI COUNTY FAIR GROUNDS. A total of SEVEN EMERGENCY FIRE SAFETY ZONES will be designated along the Salmon River Road and Highway 93 for evacuees to use on a temporary basis. These zones will be posted with signs stating "Fire Safety Zone".

X. EMERGENCY IMPLEMENTATION PROCEDURE: *In the event an evacuation is requested or ordered by the Incident Commander and time does not permit personal notification of affected persons, the following procedure will be utilized:*

- The Incident Commander for the Clear Creek Fire will notify the Sheriff through the 911 Dispatch Center with instructions to respond to a designated evacuation staging area. In the case of threats from fires in Montana, the Incident Commander for the Clear Creek Fire would still assume the role in requesting or ordering evacuations of the North Fork area.*
- The Sheriff's Office will notify residences needing to evacuate by phone, and announce the need to evacuate using P.A. systems from sheriff's vehicles driving through evacuation areas.*

3

XI. REFUSAL RESPONSE PROCEDURE: *The recommended response for persons refusing to cooperate with evacuation requests or order is:*

Thoroughly brief the resisting person(s) on dangers associated with remaining in the threatened area. Obtain identifying and next-of-kin information. Allow person(s) to remain at own risk. Arrest in cases where the resisting person(s) endangers others or violates criminal statute.

XII. EVACUATION AREAS: *Ten areas to be evacuated have been designated under this plan. Each area will be assigned to a sheriff's deputy for notification of evacuation. These areas are:*

- J. Highway 93 North from North Fork to Tower Creek, and Kriley Gulch.**
- K. North Fork to Shoup**
- L. Fourth of July Creek**
- M. Tower Creek**
- N. North Fork to Sheep Creek, both sides of the river.**
- O. Hull Creek and Hughes Creek**
- P. North Fork River from Sheep Creek to Royal Elk Ranch**
- Q. Dahlonaga Creek**
- R. Sheep Creek**

XIII. EVACUATION ROUTES AND EMERGENCY FIRE SAFETY ZONES:

In case of evacuation, all evacuees are encouraged to follow Highway 93 South to the Lemhi County Fairgrounds.

- **PRIMARY ROUTES:**
 - 3) ***Highway 93 South to the Lemhi County Fairgrounds.***
 - 4) ***Highway 93 North to the Newland Ranch located one mile west of the North Fork Ranger District on the Salmon River Road.***

- **SECONDARY ROUTES:**
 - 3) ***Highway 93 North to Lost Trail Pass and east on Highway 43 to Wisdom.***
 - 4) ***Dahlonga Creek Road (#079) over Big Hole Pass to Wisdom.***

- **STAGING AREAS:** *In the event that the primary and secondary evacuation routes are blocked by fire or heavy smoke, the following local areas have been established as EMERGENCY FIRE SAFETY ZONES. Arrangements to use these areas will be made immediately and signs indicating “Emergency Fire Safety Zones” will be erected in Stage 2. The fire safety zones are:*

Zone 1: Spring Creek pasture approximately 15 miles west of North Fork and two miles east of Spring Creek; recently used for the Clear Creek Fire as Spring Creek Helibase.

4.

Zone 2: Newland Ranch pastures approximately one mile west of North Fork.

Zone 3: Terry Smith pastures approximately ten miles north of North Fork across from Lick Creek.

Zone 4: Cliff Cummings Jr. pasture across from the mouth of Trail Gulch; approximately three miles north of North Fork.

Zone 5: Luther Davis pasture in Holcomville; approximately three miles south of North Fork.

Zone 6: Winn Turner pasture across from the Redrocks campground; approximately nine miles south of North Fork; adjacent to Highway 93 North.

Zone 7: John Heiser irrigated pasture at the mouth of Tower Creek between Highway 93 North and the Salmon River; approximately eleven miles south of North Fork.

XIV. INFORMATION AND TRAFFIC CONTROL POINTS:

- ***INFORMATION LOCATION POINTS: Roadblocks will be established for all areas at Stage 3 or higher. Roadblocks and information points will be located at the intersection of Lost Trail Pass and Highway 43; the Broken Arrow Restaurant; the Indianola Helibase; and on Highway 93 North at the County Fairgrounds.***
- ***TRAFFIC CONTROL POINTS: Traffic control points will be established for all areas at Stage 3 and higher; from Highway 93 South from the Lost Trail Pass to Tower Creek.***

XV. PRE-EVACUATION ACTIVITIES:

Teams will complete pre-evacuation contact data sheets as time and circumstances permit.

Yes No

Resident evacuation forms will be provided during initial contact during Stage 2.

Yes No

Resident evacuation forms will be provided at exit roadblocks.

Yes No

5.

Incident information representative will establish a briefing site for residents.

Yes No

Completed resident evacuation forms should be turned in at established evacuation centers (Lemhi County Fairgrounds and Newland Ranch).

XVI. RESOURCE LOCATIONS:

- ***Evacuation command center will be located at the Fife Incident Command Post. The staging area will be located at the Lemhi County Fairgrounds.***
- ***Evacuation reporting and briefing site will be located at the Lemhi County Fairgrounds.***
- ***Assistance/Evacuation center providing food, overnight shelter, and family assistance will be located at the LDS Stake Center in Salmon, South Daisy Street (behind the Junior High School).***
- ***Mobile property and livestock holding area will be at the Lemhi County Fairgrounds.***

XVII. COMMUNICATIONS: *Lemhi County Law Enforcement will use Forest Net on Stein Repeater. (???????????)*

- ❑ *With Affected Public: Incident information staff, briefing boards, area media outlets.*
- ❑ *Organizational: Regular briefings by incident management staff and attached communication plan.*

XVIII. DESIGNATED MARKINGS: *Appropriate closure signs will be posted at the perimeter, road closure barricade sites, and along Highway 93. Signs and flagging will designate emergency fire safety zones.*

ANTICIPATED RESOURCE REQUIREMENTS

J. CONTACT – MAPPING TEAMS: 1

II. INFORMATION AND TRAFFIC CONTROL POINTS: 4 SITES

III. SECURITY – EVACUATED AREA

IV. SECURITY – INCIDENT COMMAND POST: 1

V. EVACUATION CENTER – STAFFED BY RED CROSS

VI. EVACUATION COMMAND – CONTACT

- ❑ *Stage 1 – 1*
- ❑ *Stage 2 – 20*
- ❑ *Stage 3 – 20*
- ❑ *Stage 4 – 20*

VII. TRAFFIC CONTROL DEVICES: *Signs, barricades, cones, pylons, lights, etc. will be provided by Lemhi County Road Department, Forest Service, and Idaho Department of Transportation.*

VIII. OTHER RESOURCES REQUIRED: *Parking attendants will be required at all emergency fire safety zones.*

IX. OF SPECIAL NOTE (Uniform requirements, vehicle accessories, etc.): *All personnel working the evacuation will be required to wear Nomex clothing. All emergency safety zone-parking attendants will wear orange safety vests.*

X. EVACUATION COSTS WILL BE CHARGED TO:

***Incident
Jurisdiction***

***Responsible
Agency***

***Requesting
Agent***

Lemhi County Wildland Fire Hazardous, Risk, & Mitigation Plan 2005 Update

Purpose: Lemhi County Wildland Hazardous Fuels Reduction Committee. Identification of: on-going projects, projects complete, and new projects for 2004-2005 season.

Mitigation Strategies;

Home evaluations in moderate to high risk areas:

Evaluation in areas of moderate to high risk, Williams Lake subdivision, Sheep Creek, Pine Creek, along with residential areas north of the city of North Fork have been conducted.

The County has continued to educate the general population in FIRE WISE, through workshops, guest speaker lectures, home visits, along with public announcements via local radio station.

Training in wildland fire suppression for all of Lemhi Counties Volunteer Fire departments are scheduled to be completed by the end of June. Salmon, Leadore, and North Fork receive this training on a annual basis. Classes are conducted through the Bureau of Land Management.

Active recruitment for volunteer firefighters for the Elk Bend Fire Department is in the process.

Grants have been obtained to help procure new and additional PPE for the Williams Lake Fire Department.

Hazardous fuels reductions on private properties that interface with National Forest are underway:

Williams Lake Subdivision - 2004 high priorities. As of present, fuels reduction projects in the Williams Lake Subdivision are scheduled to start in mid August. Completed September 14th 2004

The Stevens Grant has been obtained to complete this project. Approximately seven homes on the east/south side of the lake. (Classified as Zone A)

In conjunction with fuels reduction on private property, the Bureau of Land Management will be starting a fuels reduction project to the south east properties on BLM ground. (attached map)

Sheep Creek Subdivision- 2004 high priority, through active recruitment of fuels reduction projects in the Sheep Creek area, five new private properties have been approved for fuels reduction treatment. An additional two residents have signed up for fuels reduction projects in the Gibbonsville area. Sheep Creek/Gibbonsville projects completed 10-30-04.

All projects are adjacent to heavy fueled National Forest property. Projects funds are provided from a grant by the USDA (High County RC&D administrators of the grant).

Pine Creek Ranch also know a GSR : **Priority 2003/2004**. Extensive reduction of fuels have been completed at the PCR in the Pine Creek area near Shoup, Idaho (high ignition zone). A private contractor completed the fuels reduction creating a 100 foot defendable space around the perimeter of the complex. The PCR, in addition, has cleaned up all ground fuels, installed sprinkler system and created a fire break adjacent to the complex by widening a natural fire break. Emergency Service Coordinator and GSR manager developed an evacuation plan, for the ranch in the event a wildland fire did accrue. All staff at the PCR attended a presentation on proper FIRE WISE mitigation guild.

A county wide evacuation plan is in place and located in all Emergency Operation Plans. Evacuation plans for individual subdivisions are currently being completed.

Educational opportunities for local residents are available upon request for private courses in FIRE WISE, along with educational hand-outs being given out during special event (i.e. parades, fairs, community gathering).

Development of Fuels Reduction documentary. Leslie Shumate is working with Producer. Interviews with persons involved, WUI, BLM, Commissioners, Forest Service ect.

GPS mapping of fuels are currently being conducted in the Williams Lake Subdivision and Sheep Creek area. Additional areas are all interface subdivisions will be GPS for fuel identification and fuel loads. A GPS system, with the computer program have been purchased with WUI funds to enable this.

Lemhi County, with funding provided through WUI, has hired a Hazardous Fuels Reduction Administrative Assistant.

Lemhi County's Wildland Hazardous Fuels Reduction Committee, is active in reviewing all up-coming events and projects in an effort to make our county wildland fire defensible.