

**2010-2011**  
**Community Wildfire Protection Plan**  
**Lake Hodges FireSafe Council**  
**San Diego County, California**

Revision 012710-1730  
Published January 27, 2010

**Document Tracking (for use by CWPP Review Committee):**

**ORIGINAL CWPP**

Date 1st submittal received: \_\_\_\_\_ CWPP Reviewed: \_\_\_\_\_

Revisions requested, letter to CWPP originators: \_\_\_\_\_

Revisions received: \_\_\_\_\_

Date CWPP approved by Committee: \_\_\_\_\_

Final signatures obtained: \_\_\_\_\_

CAL FIRE authorized: \_\_\_\_\_

Approval letter to CWPP originators: \_\_\_\_\_

PDF Posted to Website: \_\_\_\_\_

**CWPP AMENDMENT(S)**

Date 1st amendment received: \_\_\_\_\_ Amendment Reviewed: \_\_\_\_\_

Amendment revisions requested, letter to CWPP originators: \_\_\_\_\_

Revisions received: \_\_\_\_\_

Date Amendment approved by Committee: \_\_\_\_\_

Final signatures obtained: \_\_\_\_\_

CAL FIRE authorized: \_\_\_\_\_

Approval letter to CWPP originators: \_\_\_\_\_

PDF Posted to Website: \_\_\_\_\_

## Table of Contents

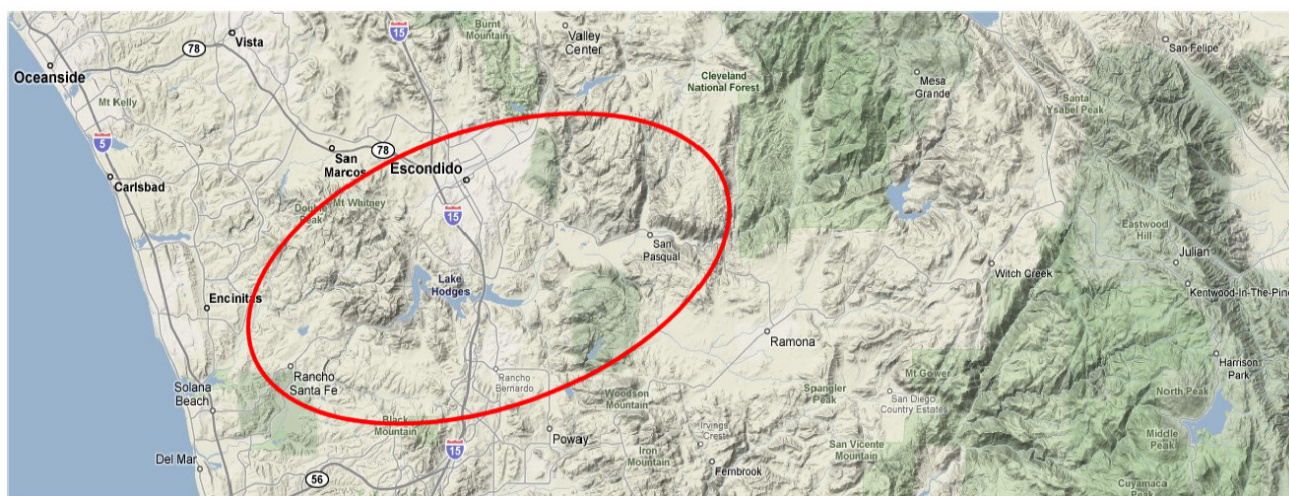
Introduction.....	3
1. Executive Summary.....	3
1.1 Direct Services Provided by the Lake Hodges FireSafe Council.....	4
1.2 Partnerships with other FireSafe Councils and Community Organizations .....	5
2. CWPP Collaborative Development.....	5
3. Community Overview .....	6
3.1 Description of Geography .....	6
3.2 Natural Resources .....	7
3.3 Notable Wildland Fire Risks near Lake Hodges.....	7
4. Factors Affecting Local Fire Potential .....	8
4.1 Fuels .....	8
4.2 Weather .....	8
5. Assets at Risk.....	8
5.1 Waterways .....	8
5.2 Structures.....	9
5.3 Wildlife and Plant Communities .....	9
5.4 Infrastructure.....	9
5.4.1 Local and Regional Water Supply.....	9
5.4.2 Power Distribution.....	9
5.4.3 Communications Facilities .....	10
6. Community Base Maps .....	10
7. Local Preparedness and Firefighting Capability .....	10
8. FireSafe Projects for 2010-2011 .....	10
8.1 Overview of Priorities .....	10
8.2 Program Focus .....	10
8.3 Specific Goals .....	11
8.4 Topics to be Covered in Workshops, Materials and Meetings .....	12
9. Lake Hodges FireSafe Council Activities and Accomplishments.....	13
10. Signators .....	14
Appendix A    References .....	15
Appendix B    Prioritized Fuel Reduction Treatments .....	16
Appendix C    Base Maps from the County of San Diego and other Agencies.....	17

## Introduction

This Community Wildfire Protection Plan (CWPP) was developed by the Lake Hodges FireSafe Council with guidance and support from the County of San Diego, California Department of Forestry and Fire Protection, the United States Forest Service, the Bureau of Land Management and the FireSafe Council of San Diego County. This CWPP supplements San Diego County Department of Planning and Land Use documents referenced in Appendix A.

## 1. Executive Summary

The Lake Hodges FireSafe Council directly serves an area of approximately 12 square miles and a population estimated to include roughly 4,000 homes and 9,500 people. In collaboration with other nearby FireSafe Councils, our sphere of influence extends to a larger area of roughly 42 square miles with as many as 68,000 residents surrounding the Greater Lake Hodges area in the cities of San Diego and Escondido as well as communities in unincorporated portions of San Diego County ranging from Rancho Santa Fe east into the San Pasqual Valley.



Lake Hodges / San Dieguito River Watershed Sphere of Influence: From Rancho Santa Fe east to San Pasqual

This Community Wildfire Protection Plan (CWPP) was developed by the Lake Hodges FireSafe Council CWPP Task Force with guidance and support from the Rancho Santa Fe Fire Protection District, Escondido Fire Department, Rincon Del Diablo Fire District, San Diego Fire-Rescue Department California Department Of Forestry and Fire Protection, County of San Diego Land Use and Environment Group, California Bureau of Land Management and the San Diego County FireSafe Council, plus mentoring by the Deer Springs FireSafe Council north of Escondido and the Rancho Bernardo FireSafe Council and Scripps Ranch FireSafe Council immediately south of us in the City of San Diego.

The role of the Lake Hodges FireSafe Council (LHFSC) in preparing this document is in keeping with our chartered mission: “To preserve and protect the lives of neighbors and our natural and manmade resources by educating and mobilizing all residents to make their homes and neighborhoods FireSafe and fire wise.”

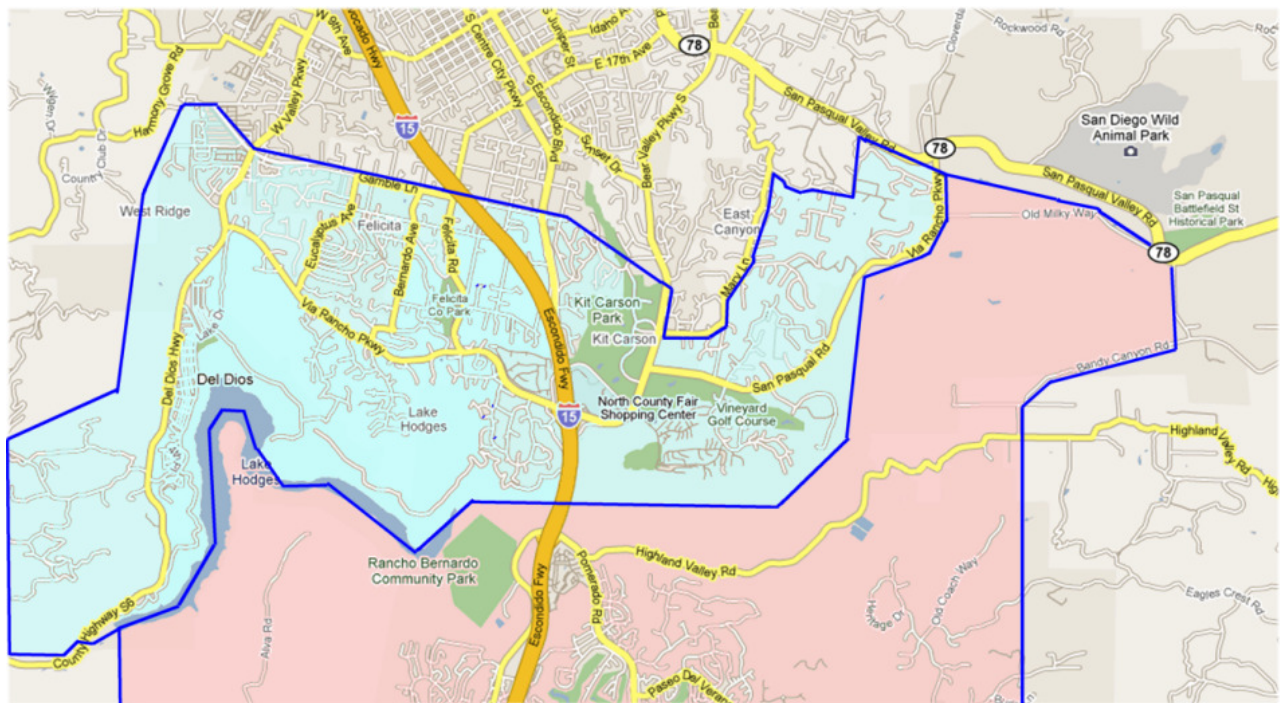
This Lake Hodges Community Wildfire Protection Plan is a dynamically evolving document designed to continuously clarify and refine our community priorities for the protection of life, property and critical infrastructure from wildfire in the wildland-urban interface areas that surround Lake Hodges in north inland San Diego County. It is also intended to serve as a vehicle to facilitate discussion among community members and our partner groups and agencies regarding pre-fire management options and their implications for the entire Lake Hodges basin.

In late 2009, the City of Escondido Fire Department obtained grant funding from the American Red Cross to create a CWPP for the entire City of Escondido and the Rincon Fire Protection District. The Lake Hodges FireSafe Council will be one of the collaborators on that new CWPP. After Escondido's CWPP is complete, this CWPP from the Lake Hodges FireSafe Council will be updated to ensure that it complies with and enhances the Escondido Fire Department's CWPP.

## 1.1 Direct Services Provided by the Lake Hodges FireSafe Council

The neighborhoods directly served by the Lake Hodges FireSafe Council are located north and east of the Lake Hodges Dam, west of San Pasqual Valley and south of Gamble Lane, Citracado Parkway, Mary Lane and Summit Drive in the far southern portion of the City of Escondido, plus unincorporated neighborhoods within the 92029 and 92025 zip codes, extending from Mount Israel and Del Dios Highway in the Rancho Santa Fe Fire District eastward through the southern portion of the Rincon Del Diablo Fire District along Via Rancho Parkway and San Pasqual Road approximately three miles east and three miles west of the I-15 bridge that crosses Lake Hodges between Escondido and Rancho Bernardo.

The neighborhoods immediately south of the Lake are served by our close partner, the Rancho Bernardo FireSafe Council. Together, these two councils serve the entire Lake Hodges basin.

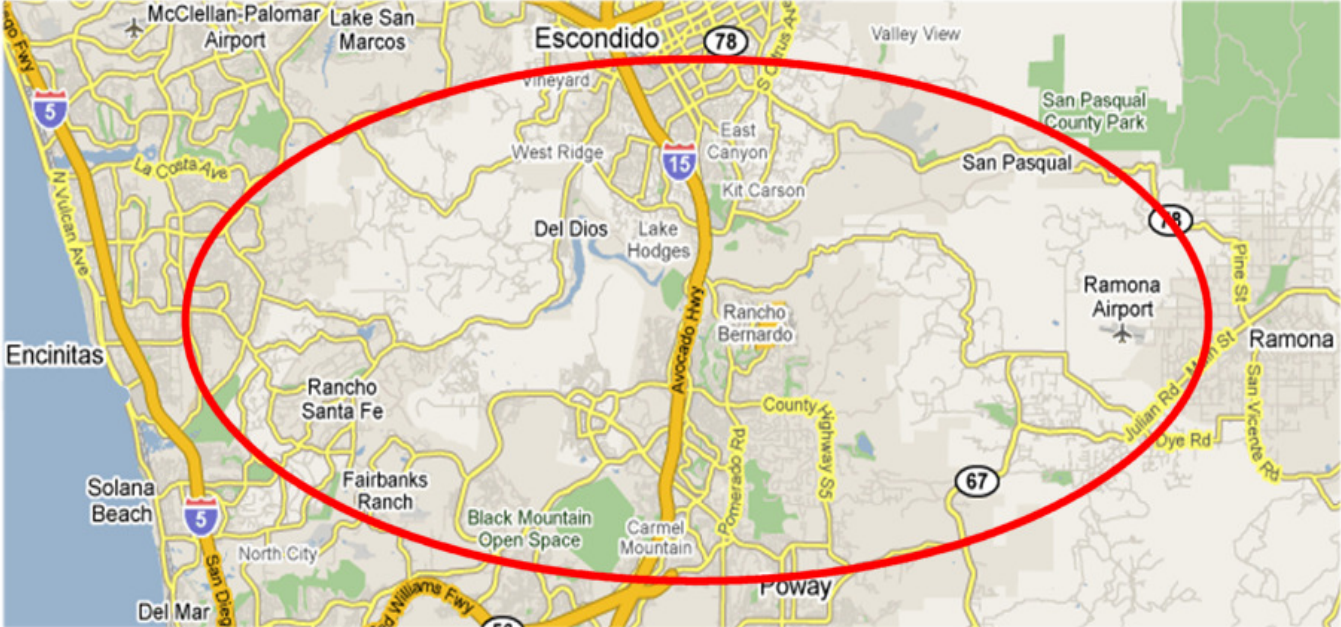


Map: Lake Hodges FireSafe Council geography to the north, Rancho Bernardo FireSafe Council to the south.



**1.2 Partnerships with other FireSafe Councils and Community Organizations**

The Lake Hodges FireSafe Council and the Rancho Bernardo FireSafe Council operating together as closely associated organizations are committed to advocating for all residents living within the Greater Lake Hodges basin, as depicted on the following map. Our two organizations are also working with other FireSafe Councils, Community Organizations, Fire Agencies and other entities to promote wildfire awareness, safety and preparedness throughout the entire Lake Hodges basin.



**2. CWPP Collaborative Development**

Within our served neighborhoods, meetings and conversations with governmental, private and public groups are ongoing to improve and expand this plan during 2010 and 2011. Some of the groups and agencies currently assisting in the development and continued evolution of this Lake Hodges CWPP are included on the following list:

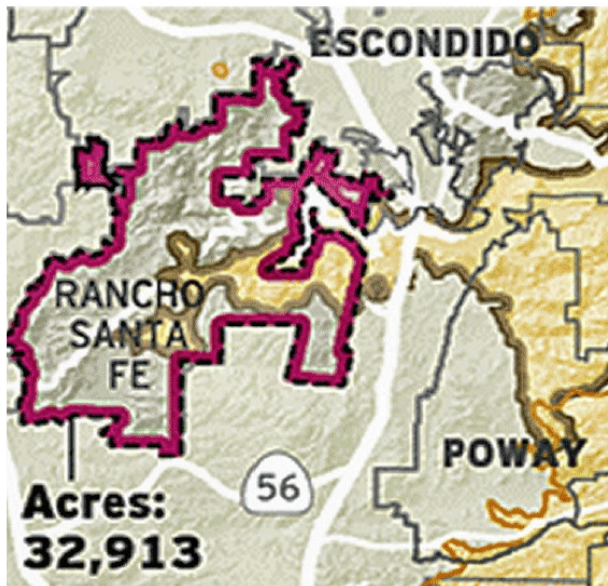
- Lake Hodges FireSafe Council and Rancho Bernardo FireSafe Council
- Del Dios / Mount Israel Town Council
- Summer Creek Home Owners
- Quail Glen Neighborhood Volunteers
- Lake Hodges Estates / Lundy Lake Neighborhood Volunteers
- Purer Road / Vista de la Cresta Neighborhood Volunteers
- Via Loma Vista / Via Valle Vista Neighborhood Volunteers
- Bernardo Lane / Circle Drive Neighborhood Volunteers
- Quiet Hills Neighborhood Volunteers
- Lomas Serenas and Del Lago Home Owners
- Sonata and Vineyard Home Owners
- Sierra Linda Neighborhood Volunteers
- Mary Lane Area Homeowners and Volunteers
- Summit Drive Area Homeowners and Volunteers
- Rancho Santa Fe Fire Protection District and CERT
- City of Escondido Fire Department and CERT
- Rincon Del Diablo Fire / Water Districts

City of San Diego Fire-Rescue Department  
California Department of Forestry and Fire Protection  
County of San Diego Land Use and Environment Group  
California Bureau of Land Management  
California Chaparral Institute  
Deer Springs FireSafe Council  
Scripps Ranch FireSafe Council  
Fallbrook FireSafe Council and North County CERT  
Ramona FireSafe Council and Ramona CERT  
San Diego County FireSafe Council

### 3. Community Overview

#### 3.1 Description of Geography

The area directly served by the Lake Hodges FireSafe Council is located north and east of the Lake Hodges Dam, west of San Pasqual Valley and south of Gamble Lane, Citracado Parkway and Summit Drive in the far southern portion of the City of Escondido, plus unincorporated neighborhoods within the 92029 and 92025 zip codes extending from Mount Israel and Del Dios Highway in the Rancho Santa Fe Fire District eastward through the southern portion of the Rincon Del Diablo Fire District along Via Rancho Parkway and San Pasqual Road approximately three miles east and three miles west of the I-15 bridge that crosses Lake Hodges between Escondido and Rancho Bernardo. Most of these neighborhoods are designated as Very High Risk Fire Zones by Cal Fire.



*In September, 2008, the Forest Area Safety Task Force, a collection of more than 80 federal, state and local agencies responsible for making the county safer from wildfires, released updated fire risk maps. One of the three regions they considered at greatest risk in all of San Diego County was a 32,913-acre area that includes Rancho Santa Fe, parts of Lake Hodges and Southwest Escondido and other nearby communities.*

Emergency response within this area is often complicated by water, bridges, ridges and canyons that make up the topography, plus jurisdictional divisions that include the City of San Diego, the City of Escondido, the Rancho Santa Fe Fire Protection District and the Rincon del Diablo Fire Protection District.

The communities served by the LHFSC consist of predominantly single-family residences, nearly all of which lie on the wildland-urban interface between native vegetation and developed communities.

### 3.2 Natural Resources

Lake Hodges is part of the San Dieguito River watershed, a drainage area of approximately 346 square miles in north inland San Diego County. The majority of this watershed is within unincorporated jurisdictions of San Diego County.

The current San Dieguito watershed population is estimated at approximately 155,000 people. However, this population is projected increase to over 210,000 residents by 2015.

There are several important natural areas near Lake Hodges and within the San Dieguito River watershed that sustain a number of threatened and endangered species, including those within the 55-mile long, 80,000 acre San Dieguito River Park, which encompasses much of the land around Lake Hodges.

### 3.3 Notable Wildland Fire Risks near Lake Hodges

The Lake Hodges area includes coastal mountain peaks as high as 1,350 feet above sea level (Mt. Israel) and other inaccessible terrain consisting of large canyons, draws, peaks and valleys. Lake Hodges is divided by the Interstate-15 bridge on the border between the cities of San Diego and Escondido. Our served area includes a north-south stretch of Interstate-15 bordered by wildland vegetation. This is one of two critical and major north-south freeways connecting San Diego with Riverside/San Bernardino and the Los Angeles Areas. Traffic volume is heavy at most times of the day. Fires with origins along the shoulders of the Interstate pose a direct threat to our communities and the natural areas around Lake Hodges.

To the east of Interstate-15 is a steep and narrow canyon with a notable east-west aspect extending eastward into the San Pasqual Valley and on into Clevenger Canyon and towards more mountainous terrain north of the community of Ramona. Considered very risky by fire officials, this unique east-west wind channel has been known to create very high velocity winds and fast-moving wind-driven fires, such as the Witch Creek Fire of October, 2007.



Neighborhood Burning at Lake Hodges, October 2007: Witch Creek Fire

Photo credit: Lake Hodges FireSafe Council

In addition, many of the neighborhoods in our served area have narrow, windy, steep, substandard roads and driveways that make access extremely difficult for local firefighters and navigation hazardous for out-of-area strike teams that respond to mutual aid requests.

## 4. Factors Affecting Local Fire Potential

The fire history map for San Diego County shows:

### 4.1 Fuels

Analysis of fuel type and conditions prevalent in San Diego County indicate that more than two thirds of the fuels in the county are ranked in the high to very high range with regard to combustibility. The vegetation throughout the Lake Hodges area is a combination of coastal sage scrub (California sagebrush, California buckwheat, and laurel sumac) and chaparral (chamise, scrub oak, and manzanita). Although we had a major fire in 2007, fuel loading in many vegetated areas is an important concern for the risk and damaging effect of wildfire.

### 4.2 Weather

Typical summer weather conditions classify our area as a “very high fire danger” zone. Fall and winter Santa Ana events, with the potential for extreme fire behavior, place it in the “extreme fire danger” category during these periods. It is not uncommon for the National Weather Service (NWS) to declare more than one “Red Flag” episode each year when high temperatures, low humidity and high winds combine to create a critical fire hazard. Red Flag conditions are not limited to Santa Ana conditions and may occur when wind velocity, humidity and temperature exist in a relationship that will support extreme fire behavior.

***As noted previously, the east-west aspect of the Lake Hodges watershed and associated canyons have the potential to funnel very high velocity winds and fast-moving wind-driven fires into the Lake Hodges basin, putting many thousands of residents at risk. As was experienced in 2007, homes as far as one mile from a fire front can ignite as the result of airborne firebrands traveling during a wind-driven wildland fire event.***

## 5. Assets at Risk

Assets at risk refer to anything having the potential to be damaged or destroyed directly or indirectly by wildfire. There are several types of assets at risk within our area.

### 5.1 Waterways

Lake Hodges and the San Dieguito River are significant drainages toward the Pacific Ocean. Destruction of the watershed could result in soil erosion and runoff from winter rains with subsequent damage to the Lake Hodges ecosystem and sensitive downstream lagoons.

Lake Hodges is a critical part of the San Diego County Water Authority's (SDCWA) Emergency Storage Project and the Lake Hodges to Olivenhain Pipeline Tunnel (LHOP) that connects Lake Hodges to the Olivenhain Reservoir to provide an uninterrupted source of water to San Diego County if a catastrophe, such as a major earthquake, were to cut off the water supply from north.

The Lake Hodges to Olivenhain pipeline is intended to allow the SDCWA to move water from one reservoir to another and will also be used for pumped storage, generating electricity at peak times. The Lake Hodges to Olivenhain Pipeline 40 megawatt pumped storage project is valued at \$108 million, and is designed to deliver a reliable source of water in emergency situations and electricity-generating capability to meet the demands of the San Diego region.



## 5.2 Structures

Due to the nature of our area and the placement of homes and other structures near vegetation, we will always have the potential for significant loss of structures due to wildfire. Homes, public buildings, small businesses and the Lake Hodges Dam, built in 1918, could all be threatened by future wildland fires.



Lake Hodges Dam

## 5.3 Wildlife and Plant Communities

The dense vegetation within our area provides habitat for many species of wildlife. This habitat would be damaged or destroyed as the result of wildfire. Excessive fire frequency and/or disturbance can compromise the ecological health of native plant communities such as chaparral and coastal sage scrub. Such disturbances will result in these communities being invaded or replaced by non-native, flammable weeds and grasses.

## 5.4 Infrastructure

The Lake Hodges area is home to several facilities that provide services to meet the daily living needs of San Diego County residents. The Del Dios Highway, Via Rancho Parkway and San Pasqual Road, all of which run along the northern rim of the Lake basin, are major east-west thoroughfares connecting coastal communities to inland San Diego County. Both of these highways are critical for commuting, commerce and evacuation in the event of a regional emergency.

### 5.4.1 Local and Regional Water Supply

Numerous local water supply tanks, regional water pipelines, two reservoirs, a dam and other water supply assets, including the Del Dios Mutual Water Company and major infrastructure operated by the Rincon del Diablo Municipal Water District, are located at or near Lake Hodges.

### 5.4.2 Power Distribution

A number of important power lines run near the Lake Hodges area bringing power to both coastal and inland communities.

### **5.4.3 Communications Facilities**

Several cellular telephone transmission sites are situated throughout the Lake Hodges area, many in densely vegetated areas and on high points that could be threatened by wildland fires.

## **6. Community Base Maps**

The latest mapping technology combined with local expertise, satellite imagery and GPS ground surveys yield detailed maps that graphically present a variety of data about our area. Maps of this type provide a visual aid that can assist community members in more easily understanding the geographic and vegetation complexities of our area. The County of San Diego Department of Planning and Land Use Department has developed a series of maps depicting the situation of the Greater Lake Hodges area. These maps cover portions of the Rancho Santa Fire Protection District, portions of the Rincon del Diablo Fire Protection District and portions of the City of Escondido served by the Lake Hodges FireSafe Council. These maps can be found at the end of this document attached to Appendix C along with other relevant maps provided by other agencies.

## **7. Local Preparedness and Firefighting Capability**

Most of the areas around Lake Hodges are served by modern, multi-purpose fire agencies. Initial response to all fire, medical and associated emergencies within the Lake Hodges area, including a stretch of Interstate-15 is the responsibility of the City of San Diego Fire-Rescue Department, the City of Escondido Fire Department and the Rancho Santa Fe Fire Protection District. Cal Fire has primary responsibility for wildland threats around Lake Hodges.

## **8. FireSafe Projects for 2010-2011**

### **8.1 Overview of Priorities**

The majority of lands within our served area are privately owned, with the exception of the Lake Hodges basin (owned by the City of San Diego) and the San Dieguito River Park areas. Thus, it will be necessary to work directly with private property owners to effect a reduction in fuel load on their properties and to reduce the threat of structure ignitability. Residential landscaping, fire resistant construction and management of invasive non-native annual plants will be crucial for community fire safety.

### **8.2 Program Focus**

Our focus for 2010 and 2011 is a two-pronged program aimed at 1) Community Education Programs and other resources to encourage and enable local residents to voluntarily make their properties and homes more FireSafe, and 2) Fuel and Wildfire Hazard Mitigation.

The extensive native vegetation within the Greater Lake Hodges area represents a critical hazard for wildfire. Consequently, the highest priority for this CWPP is to develop a program to mitigate this hazard using a variety of mutually supportive strategies including fire safe building designs and appropriate fuel management. This program will also identify and prioritize the areas within our served communities that pose the greatest threat for the loss of structures from a potential wildfire.

The Lake Hodges FireSafe Council has been developing an ongoing program of education, hazard identification and hazard mitigation on a resident-to-resident community level. The LHFSC is aware that the magnitude of this program will require funding from outside our area and our Council will explore all avenues of funding such as competitive grants from governmental agencies and direct grants and contributions from business and industry.

The Lake Hodges FireSafe Council has determined that no fuel reduction projects are pending within the Lake Hodges area other than routine enforcement activities of our area fire marshals. Since the vast majority of our area is private property, the LHFSC proposes to sponsor and facilitate a community-based effort. In cooperation with local agencies, the Council will assist property owners in meeting the standards of the new Public Resource Code 4291.

Public Resource Code 4291 can be used as a model to reflect the total fire risk equation. We recognize that there is a need to manage fuel, embers, vegetation, structures and site defensibility. Fuel means any combustible material, such as a house itself, wood piles, propane tanks, decks, ornamental plants, etc. Vegetation means all plants, shrubs, grass and perennial or annual plants. Defensibility extends beyond the site fuel management practices including measures that increase the likelihood of a structure to withstand ignition.

### **8.3 Specific Goals**

1) Recruit and train volunteers who will provide education to the residents of our area about current hazard abatement regulations and capabilities.

2) Establish a public service program of seminars and workshops that provides property owners with training in the following areas:

- a. Site and structure defensibility to reduce the risk of structure ignitions.
- b. Reducing structure ignition by understanding fire resistant design features.
- c. Understanding the flammability of all vegetation.
- d. Identifying native and non-native plants appropriate for residential fire wise landscaping.
- e. Planning for the areas 30 feet from the house.
- f. Learning management techniques to achieve fire wise native trees and chaparral.
- g. Using appropriate and safe techniques for working in the chaparral.
- h. Reducing "ladder" fuels by proper maintenance of areas surrounding the house.

3) With the funding that is available, provide assistance to residents with the management of harvested plant material, such as chipping services, and assistance with other landscape maintenance, such as tree trimming and fuel reduction, when help is requested by individual homeowners due to their limited financial resources or physical abilities. Special emphasis will be placed on the following:

- a. Local fire department height requirements on trees that must not be lower than 13'6" above driveways and roadways and not extend out into roadways to provide clearance and access for fire department vehicles.
- b. Cleaning, trimming and maintenance of Mexican fan palm trees and other types of palms, eucalyptus and other trees that may erupt in flames and cast off firebrands and flaming debris in wind-driven fire events that cause danger to fire fighters and cause new spot fires to break out.
- c. Open space owned by the City of San Diego and or managed by the San Dieguito River Park. To the greatest extent permitted by regulations and laws, establish and maintain the greatest possible clearances from structures and residences.

4) Work with other organizations and agencies to promote hazard mitigation to the extent that this can be done with the financial resources available and with respect to the rules and regulations governing fuels reduction, brush management and weed abatement and while respecting all protected plant and wildlife species as appropriate.

5) Collaborate with our local fire agencies and Cal Fire to develop an easy-to-complete Community Fire Safety Survey that will be used to gather data to establish a priority list of property owners that may need direct assistance from our Council. This Community Survey will help identify higher risk properties in need of fuel reduction and residences with wood shake roofs, problematic rain gutters, sub-standard window treatments, wood siding, combustible decks and patios, combustible storage buildings, inadequate setbacks, street address visibility problems, inadequate driveway widths and other fire department access issues.

The Community Survey will be distributed to neighborhood coordinators who will be asked to canvass their immediate areas twice each year in February-March and again in August-September and report their findings only to our Council, as a neutral third party, which will keep everyone's identities private. From time to time, general survey results (with individual property names and addresses omitted) may be posted publicly on our Council Web site to increase public awareness of the nature of our local fire risks and facilitate public support for the risk mitigation efforts of our Council and our fire agency partners.

If funding can be secured, we may also develop a Homeowner Self Survey that we mail or deliver to homeowners and encourage them to voluntarily inspect their own properties and report the results confidentially to our Council only. The Homeowner Self Surveys would include the option of being returned to our Council anonymously to encourage greater homeowner participation and to assist our Council in defining additional new risk mitigation programs that we offer to our community.

6) Individual projects currently identified by fire officials and the Lake Hodges FireSafe Council are described in Appendix B, attached to this document. This is a dynamic list that will change and evolve as old projects are completed and new projects identified.

#### **8.4 Topics to be Covered in Workshops, Materials and Meetings**

Examples of additional topics to be covered include, but are limited to:

The proper storage of flammable materials, storage of firewood away from structures, pruning vegetation to lessen fire propagation, proper disposal of vegetation trimmings and fire-resistant materials for construction, upgrading and landscaping. Reducing combustibles and fuels near homes and upgrading home construction to be more fire safe.

Many older homes within our served area were constructed in compliance with building codes that did not contain the fire safety provisions of today's codes. These homes will receive additional attention so that owners can increase the chances of structural survival in a wildfire by incorporating several treatments ranging from simple do-it-yourself projects to treatments that are more involved and costly. Appropriate treatment will vary from structure to structure and the treatments to be utilized will be left to the discretion of the property owners. Some examples of treatments for older structures that will be presented are: clear all flammable vegetation and material from beneath open decks, enclose undersides of elevated decks with fire-resistant building materials or wire mesh with openings no greater than 1/4 inch, screen all foundation and roof vents with wire mesh with openings no greater than 1/8 inch, enclose open eaves, install "bird-stop" in tile roofs, and replace wood-shingled roofs with fire-resistant roofing.

Additional information will be provided to property owners highlighting wildfire prevention around the home. This would include, for example, such topics as the limitation of certain activities during high fire danger periods, the maintenance of powered field and garden tools in proper operating condition, the careful refueling of such equipment, and such seemingly routine activities as the careful disposal of smoking material and fireplace ashes.



## 9. Lake Hodges FireSafe Council Activities and Accomplishments

The Lake Hodges FireSafe Council (LHFSC) is a proactive organization consisting of thirteen current members of our Board of Directors plus additional representatives and neighborhood coordinators from communities and associations throughout the Greater Lake Hodges area.

The LHFSC is a public benefit non-profit association, funded in part by contributions from the County of San Diego along with donations from private individuals and grants from various funding entities.

Since its founding in 2006, the LHFSC has conducted numerous public meetings including educational and planning sessions. We have held six to eight meetings per year with attendance ranging from 30 to 150 attendees per session.

Our 2010-2011 education plan includes small, home-based neighborhood meetings (30 people and less), along with larger meetings (50 to 150 people) in public facilities such as fire stations and libraries. We also have close working relationships with CERT organizations (Community Emergency Response Teams) surrounding Lake Hodges.

In cooperation with the County of San Diego and our local fire authorities, the LHFSC supports and promotes fire wise activities and constantly seeks avenues to educate local residents about fire safety and prevention. Our Web site is [www.LakeHodges/firesafe](http://www.LakeHodges/firesafe)

The LHFSC is already assisting residents of our area in reducing the ignitability of their homes and outbuildings through a series of educational mailings, seminars and workshops designed to convey methods of treatment to reduce structure ignitability.

These offerings consist of presentations and hands-on workshops provided by the LHFSC, local public safety personnel and professionals in related fields. Residents receive educational materials and invitations to seminars and workshops. The seminars and workshops are open to all residents and are announced in local publications, online and in FireSafe newsletters.

The LHFSC is delivering the message that all owners of residential property near Lake Hodges must comply with the provisions of California Public Resources Code (PRC) Section 4291 parts a through f.

Educating residents on the requirements to comply with the code and the resulting benefits that would accrue from compliance will be the focus of the workshops and seminars during 2010 and 2011.

Specifically, the provisions of PRC 4291 (paraphrased) are:

- a. Fuel modification within 30 feet around the structure, taking into account the flammability of the structure and the type of vegetation.
- b. Maintain a defensible space zone within 100 feet of an occupied structure, but not beyond the property line unless allowed by state law.
- c. Trim trees for at least 10 feet of clearance around a chimney.
- d. Remove dead growth from any tree overhanging a building.
- e. Maintain the roof of a structure free of leaves, needles or other dead vegetative growth.
- f. Install and maintain spark arrestors on all chimneys.

## 10. Signators

### The Community Wildfire Protection Plan developed for Lake Hodges:

- Was collaboratively developed. Interested parties and federal land management agencies in the vicinity of Lake Hodges have been consulted.
- This plan identifies and prioritizes areas for hazardous fuel reduction treatments and recommends the types and methods of treatment that will protect the Greater Lake Hodges Basin.
- This plan recommends measures to reduce ignitability of structures throughout the area addressed by the plan.

The following entities attest that the standards listed above are proposed to be met and mutually agree with the content of this Community Wildfire Protection Plan:

#### UNINCORPORATED MUNICIPALITY

##### Mandatory Signature Page

---

**APPLICABLE GOVERNMENT (required)**

San Diego County Land Use and  
Environmental District (SD LUEG)

*Chandra Wallar*

---

**CAL FIRE Unit Chief**

(Fire Service Area)

---

**APPLICABLE GOVERNMENT (required)**

Escondido Fire Chief  
Mike Lowry

---

**STATE AGENCY (authorizing  
entity—required for finalization)**

California Department of Forestry  
and Fire Protection  
*Chief Howard Windsor*

---

**APPLICABLE GOVERNMENT (required)**

Rancho Santa Fe Fire Chief

---

**APPLICABLE GOVERNMENT (required)**

San Diego City Fire Chief

## Appendix A      References

Documentation Affecting Fuels Reduction, Building Construction, and Community Fire Protection.

### LIST OF REFERENCES:

1. County of San Diego Building Code, Attachment B (current edition).
2. County of San Diego Fire Code, Attachment A (current adopted code: [www.sdcounty.ca.gov](http://www.sdcounty.ca.gov))
3. County of San Diego Code of Regulatory Ordinances, Title 6 Health and Sanitation, Division 8. Sewage and Refuse Disposal, Chapter 4. Removal of Combustible Vegetation and Other Flammable Materials (current code)
4. County of San Diego, OES Hazard Mitigation Plan (2004)
5. County of San Diego, Fire, Defensible Space and You... (2005) [www.wildfirezone.org](http://www.wildfirezone.org)
6. <http://frap.cdf.ca.gov> for additional maps, data, and documents
7. <http://www.cafirealliance.org> California Fire Alliance website for additional documents.
8. <http://wildfire.cr.usgs.gov/fireplanning> California Fire Alliance mapping tool for additional planning and documents.
9. [http://www.iafc.org/grants/wildland\\_fire.asp#downloads](http://www.iafc.org/grants/wildland_fire.asp#downloads)
10. <http://www.livingwithfire.com> Sample of information from Nevada Living with Fire program.
11. [www.fast.org](http://www.fast.org)
12. [www.firesafesdcounty.org](http://www.firesafesdcounty.org)

## **Appendix B            Prioritized Fuel Reduction Treatments**

This is a dynamic list that will change and evolve as old projects are completed and new projects are identified. Additions to this list may be submitted at any time by email to: [LakeHodges@Cox.net](mailto:LakeHodges@Cox.net)  
Regular updates to this Appendix will be made public at [www.LakeHodges.com/firesafe](http://www.LakeHodges.com/firesafe)

### **Prioritized Project Needs as of January 25, 2010**

#### Community of Del Dios, Rancho Santa Fe Fire District

- Reduction of grasses and other fuels on small lots owned by the City of San Diego.
- Trimming and removal of small and hazardous eucalyptus trees on the shorelines of Lake Hodges, especially those land areas owned by the City of San Diego and its Water Authority.
- Clearance of all hazards along Lake Drive, north of Ash Lane and South of Via Rancho Parkway, including any over-hanging trees that restrict fire department access to the community.
- Additional infrastructure including some new fire hydrants and possibly an additional water storage tank. This will require major funding beyond the normal capabilities of the FireSafe Council.

#### Rancho Santa Fe Fire District (northeastern edge)

- Removal of large piles of dead brush bulldozed during the Witch Fire of October 2007, especially the very large piles located immediately south and west of Quail Glen Way. This debris is within the Rancho Santa Fe Fire District and the City of San Diego (San Dieguito River Park) and threatens adjacent homes in the Rincon Fire District and the City of Escondido.

#### City of Escondido and Rincon Fire District

- Reduction or removal of dangerous fuels on the hills above Lake Hodges along Mission Road where it connects the Community of Del Dios to the Lake Hodges Boat Launch Ramp. These fuels threaten adjacent uphill homes in the Rincon Fire District along Skyhawk Road, Vista de La Cresta, Purer Road, Lakeview Terrace, Vista de Oro and Via Loma Vista.
- Reduction or removal of dangerous fuels on and around Bernardo Mountain within the City of Escondido and the San Diego River Park that threaten adjacent homes in the Rincon Fire District along Via Conejo, Via Privada, Via Valle Vista, Via Loma Vista, Kershawn Place, Bernardo Mountain Road, Quiet Hills Farm Road, and in the City of Escondido in the Sage Glen / Quiet Hills Drive and Lomas Serenas developments.

#### City of Escondido

- Reduction or removal of fuels in the small canyons near the Summer Creek Development on West Valley Parkway south of Citracado Parkway.
- Reduction or removal of eucalyptus trees and other fuels on lands owned by the City of San Diego along Interstate-15 immediately north of the Lake Hodges Bridge.
- Reduction or removal of fuels on the hills south and east of Beethoven Drive and Sierra Linda Drive and along San Pasqual Road and East Via Rancho Parkway near the San Pasqual Valley.

#### Cities of Escondido, San Diego and Poway, and County of San Diego (unincorporated)

- In partnership with other FireSafe Councils and community organizations in Rancho Bernardo, Ramona, Poway, 4S Ranch, Rancho Santa Fe, Fairbanks Ranch, Del Mar, Solana Beach, Encinitas and San Marcos, the Lake Hodges FireSafe Council supports the concept of a wild fire protection zone in the open space areas, wetlands, public property and private property east of Interstate-15, south of State Highway 78 and north of County Highways S4 and S5. In collaboration with all appropriate federal, state and local agencies and fire authorities, we call for specific measures to be proposed and developed by professional domain experts that will reduce the likelihood of a Santa Ana wind-driven wildland fire to move through this zone and endanger lives and properties downwind. We will elaborate more on this topic in future revisions of this appendix.



## Appendix C      Base Maps from the County of San Diego and other Agencies

All base maps are attached to this document.

The filenames are as follows:

LakeHodges\_CWPP\_assets\_map.pdf  
LakeHodges\_CWPP\_communities\_map.pdf  
LakeHodges\_CWPP\_FireHistory\_map.pdf  
LakeHodges\_CWPP\_FireThreat\_map.pdf  
LakeHodges\_CWPP\_PubOwn\_map.pdf  
LakeHodges\_CWPP\_TopoElev\_map.pdf  
LakeHodges\_CWPP\_USGStopo\_map.pdf  
LakeHodges\_CWPP\_VegClass\_map.pdf  
LakeHodges\_CWPP\_WUI\_map.pdf  
Veg\_Legend.pdf

Contact Information



[www.LakeHodges.com/firesafe](http://www.LakeHodges.com/firesafe)