

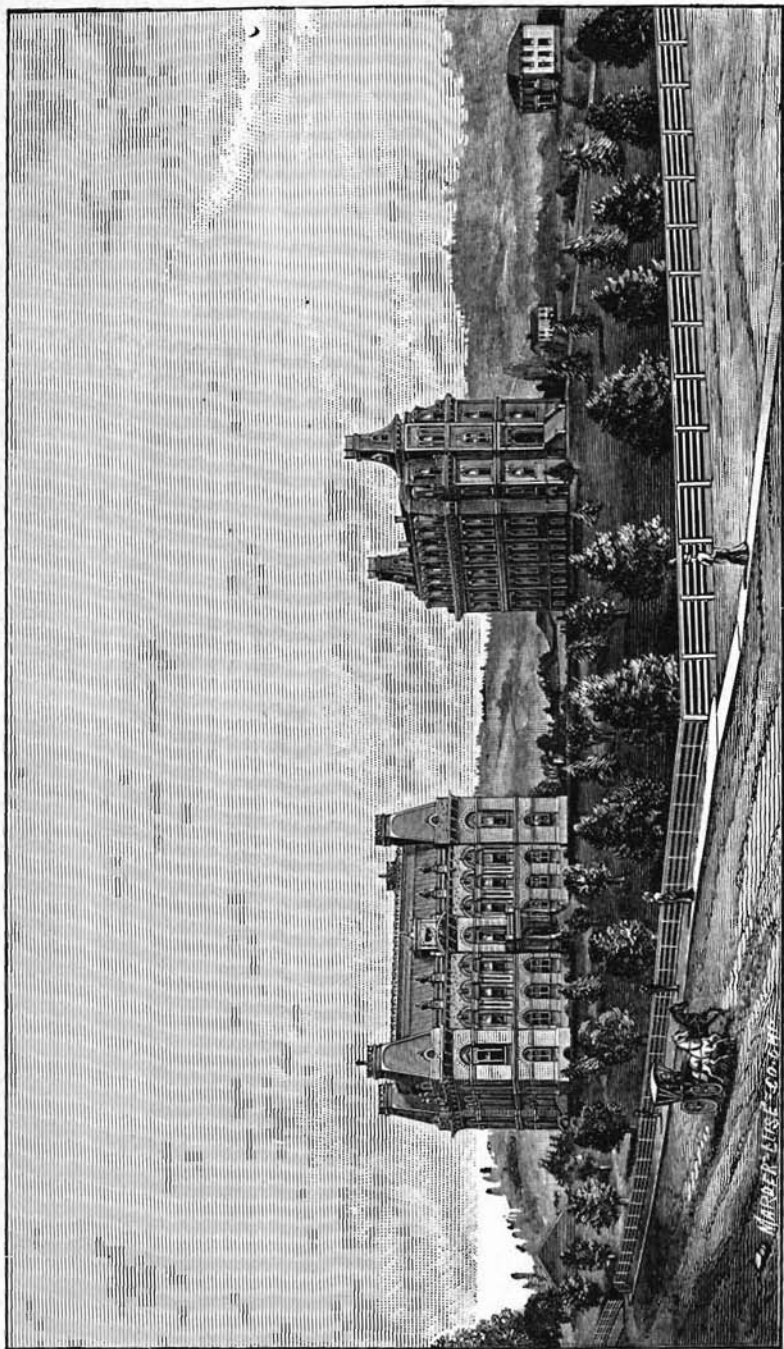
*Handwritten notes at the top of the page, including "University of Oregon" and "Eugene City".*

# UNIVERSITY OF OREGON,

EUGENE CITY.

1888-1889.

*Handwritten notes on the right side of the page, including "1888-1889" and "Eugene City".*



UNIVERSITY OF OREGON.

THIRTEENTH  
ANNUAL CATALOGUE  
OF THE  
University of Oregon

1888-1889.



PORTLAND, OREGON:  
DAVID STEEL, SUCCESSOR TO HIMES THE PRINTER,  
169-171 Second Street.  
1889.

## Calendar 1889-90.

---

- Sept. 16.    .    .    Session Begins.
- June 19.    .    .    Session Ends.
- Sept. 16.    .    .    First Term Begins.
- Dec. 20.    .    .    First Term Ends.
- Jan. 6.    .    .    Second Term Begins.
- Apr. 4.    .    .    Second Term Ends.
- Apr. 14.    .    .    Third Term Begins.
- June 19.    .    .    Third Term Ends.
- June 15.    .    .    Baccalaureate Sermon.
- June 16, 7:30 p.m.    Graduating Exercises in Music.
- June 17, 7:30 p.m.    Reunion of Literary Societies.
- June 17, 3:00 p.m.    Address before Literary Societies.
- June 18, 10:00 a. m.    Graduating Exercises Law School.
- June 18, 2:00 p.m.    Planting Class Tree.
- June 18, 3:00 p.m.    Alumni Meeting.
- June 18, 7:30 p.m.    Address before the University.
- June 19.    .    .    Annual Meeting of the Board of Regents.
- June 19, 10:00 a. m.    Commencement Day.

Days on which the University will be in Session.

1889.		1890.					
FIRST TERM.		SECOND TERM.			THIRD TERM.		
September.		January.			April.		
Mon.	.. 16 23 30	Mon.	.. 6 13 20 27	Mon.	.. 14 21 28		
Tues.	.. 17 24 ..	Tues.	.. 7 14 21 28	Tues.	.. 15 22 29		
Wed.	.. 18 25 ..	Wed.	.. 8 15 22 29	Wed.	.. 16 23 30		
Thur.	.. 19 26 ..	Thur.	.. 9 16 23 30	Thur.	.. 17 24 .		
Fri.	.. 20 27 ...	Fri.	.. 10 17 24 *31	Fri.	.. 18 *25 ..		
October.		February.			May.		
Mon.	.. 7 14 21 28	Mon.	.. 3 10 17 24	Mon.	.. 5 12 19 26		
Tues.	1 8 15 22 29	Tues.	.. 4 11 18 25	Tues.	.. 6 13 20 27		
Wed.	2 9 16 23 30	Wed.	.. 5 12 19 26	Wed.	.. 7 14 21 28		
Thur.	3 10 17 24 31	Thur.	.. 6 13 20 27	Thur.	1 8 15 22 29		
Fri.	4 11 18 *25 ..	Fri.	.. 7 14 21 28	Fri.	2 9 16 23 *30		
November.		March.			June.		
Mon.	.. 4 11 18 25	Mon.	3 10 17 24 31	Mon.	2 9 16 .. ..		
Tues.	.. 5 12 19 26	Tues.	4 11 18 25 ..	Tues.	3 10 17 .. ..		
Wed.	.. 6 13 20 27	Wed.	5 12 19 26 ..	Wed.	4 11 18 .. ..		
Thur.	.. 7 14 21 28	Thur.	6 13 20 27 ..	Thur.	5 12 19 .. ..		
Fri.	1 8 15 32 *29	Fri.	*7 14 21 28 ..	Fri.	6 13 .. .. ..		
December.		April.					
Mon.	2 9 16 .. ..	Mon.	.. .. .. ..				
Tues.	3 10 17 .. ..	Tues.	1 .. .. .. ..				
Wed.	4 11 18 .. ..	Wed.	2 .. .. .. ..				
Thur.	5 12 19 .. ..	Thur.	3 .. .. .. ..				
Fri.	6 13 20 .. ..	Fri.	4 .. .. .. ..				

\* Public Rhetorical Exercises.

## SCHEDULE OF RECITATIONS.

### FIRST TERM.

CLASSES.	9 to 10 A. M.	10 to 11 A. M.	11 to 12 A. M.	12 to 1 P. M.	2 to 3 P. M.
SENIORS .....	History of Civilization	Psychology	Astronomy		
JUNIORS .....	Mechanics	Botany	Chemistry		
SOPHOMORE .....	Rhetoric	{ Surveying Demosthenes	Modern History		Calculus.
FRESHMEN .....	Olney's Algebra	Cicero	{ French, Anglo-Saxon German.	Iliad	

### SECOND TERM.

SENIORS .....	Moral Science	Geology	Astronomy	Elocution	
JUNIORS .....	Physics	Political Economy	{ Chemical Analysis Logic		
SOPHOMORES .....	{ Livy, etc. Mediæval History	Rhetoric	Physical Features, etc.	Surveying	Calculus.
FRESHMEN .....	{ Geometry Trigonometry	Memorabilia	{ French; Anglo-Saxon German.	Virgil	

### THIRD TERM.

SENIORS .....	International Law	Geology	Elocution		
JUNIORS .....	Constitution	Tusculanæ Disputationes	Optics	Botany	
SOPHOMORES .....	{ Calculus Horace	English Literature	Zoology	Æsthetics	Surveying
FRESHMEN .....	Ancient History	Analytics	{ Livy, French, German, Anglo-Saxon.		

Rhetoricals, 1 P. M.

## Board of Regents.

---

NAME.	RESIDENCE.	TERM EXPIRES.
HON. H. FAILING, - - -	Portland,	1889
S. HAMILTON, M. D., - -	Roseburg,	1889
HON. C. C. BEEKMAN, - -	Jacksonville,	1891
HON. R. SCOTT, - - -	Eugene City,	1891
HON. R. S. BEAN, B. S., - -	Eugene City,	1893
HON. A. BUSH, - - -	Salem,	1893
HON. MATTHEW P. DEADY, LL. D.,	Portland,	1895
HON. T. G. HENDRICKS, - -	Eugene City,	1897
HON. L. L. McARTHUR, - -	The Dalles,	1901

### OFFICERS OF THE BOARD.

HON. MATTHEW P. DEADY, LL. D.,	-	President.
HON. J. J. WALTON,	- - -	Secretary.
HON. A. G. HOVEY,	- - -	Treasurer.

### EXECUTIVE COMMITTEE.

T. G. HENDRICKS,	R. S. BEAN,	R. SCOTT.
------------------	-------------	-----------

---

LIBRARIAN,  
MARK BAILEY.

CURATOR OF MUSEUM,  
B. J. HAWTHORNE.

## Faculty.

---

JOHN W. JOHNSON, A. M., President.  
*Professor of Ethics and Latin.*

MARK BAILEY, PH. D.,  
*Professor of Mathematics and Astronomy.*

THOMAS CONDON, PH. D.,  
*Professor of History, Geology and Natural History.*

GEORGE H. COLLIER, LL. D.,  
*Professor of Chemistry and Physics.*

JOHN STRAUB, A. M.,  
*Professor of Greek and Modern Languages.*

BENJAMIN J. HAWTHORNE, A. M.,  
*Professor of Mental Philosophy and English Literature.*

LUELLA C. CARSON,  
*Professor of Rhetoric and Elocution.*

FRANK A. HUFFER, A. B.,  
*Tutor.*

S. E. McCURE, A. M.,  
*Tutor.*



## Students

IN THE

CLASSICAL, SCIENTIFIC, LITERARY AND ENGLISH  
COURSES.

---

Adair, Veina E.	-	-	-	-	Salem.
Armitage, Frank L.	-	-	-	-	Eugene.
Bain, Lennah F.	-	-	-	-	Portland.
Bateman, Nathan H.	-	-	-	-	Halsey.
Bonnett, Annie A.	-	-	-	-	Eugene.
Bracken, Estella	-	-	-	-	Eugene.
Bradford, M. Ethel	-	-	-	-	Oakland, Cal.
Brady, Alexander	-	-	-	-	Oakland, Cal.
Brattain, Paul J.	-	-	-	-	Paisley.
Bronaugh, Jerry E.	-	-	-	-	Portland.
Brooks, Louis K.	-	-	-	-	Sweet Home.
Brown, Hiram E.	-	-	-	-	Astoria.
Brumley, Dell E.	-	-	-	-	Eugene.
Buchan, Alfred J.	-	-	-	-	Eugene.
Burton, Fanniè	-	-	-	-	Springfield.
Bushnell, Cora F.	-	-	-	-	Eugene.
Bushnell, Fred	-	-	-	-	Eugene.
Calef, Ira H.	-	-	-	-	Eugene.
Calef, Martha F.	-	-	-	-	Eugene.
Calef, Mira A.	-	-	-	-	Eugene.
Cantrall, Miles	-	-	-	-	Uniontown.
Carey, Robert	-	-	-	-	Shedd.
Chambers, Charles N.	-	-	-	-	Eugene.
Chambers, Fred E.	-	-	-	-	Eugene.
Cheshire, Waldo L.	-	-	-	-	Springfield.

---

Collier, Mary H.	-	-	-	-	Eugene.
Condon, Clara L.	-	-	-	-	Eugene.
Condon, Fannie C.	-	-	-	-	Eugene.
Condon, Herbert T.	-	-	-	-	Eugene.
Connell, Elijah	-	-	-	-	Glencoe.
Connell, William	-	-	-	-	Glencoe.
Crain, Annie A.	-	-	-	-	Eugene.
Davis, Lewis J.	-	-	-	-	Union.
DaMotta, Elmer P.	-	-	-	-	Roseburg.
Dorris, Cecile	-	-	-	-	Eugene.
Dorris, Emma C.	-	-	-	-	Eugene.
Dorris, May	-	-	-	-	Eugene.
Dunn, Fred S.	-	-	-	-	Eugene.
Dunning, Hattie I.	-	-	-	-	Astoria.
Edwards, Chester D.	-	-	-	-	Springfield.
Edwards, Emma B.	-	-	-	-	Springfield.
Elliott, Dora J.	-	-	-	-	Scholl's Ferry.
Esson, Ida	-	-	-	-	Gervais.
Ferree, Jay B.	-	-	-	-	Eugene.
Fisher, Henry W.	-	-	-	-	Eugene.
Fisher, Luther M.	-	-	-	-	Eugene.
Forward, Allen E.	-	-	-	-	Silverton.
Fletcher, Edwin J.	-	-	-	-	Shedd.
Flint, Arthur B.	-	-	-	-	Scholl's Ferry.
Frank, Edward R.	-	-	-	-	Eugene.
Friendly, Carrie	-	-	-	-	Eugene.
Galloway, Elva	-	-	-	-	Medford.
Golden, Thompson T.	-	-	-	-	Marshfield.
Goldsmith, Charles C.	-	-	-	-	Eugene.
Gray, Hugh H.	-	-	-	-	Eugene.
Greene, Agnes M.	-	-	-	-	Seattle, W. T.
Greene, Roger S.	-	-	-	-	Seattle, W. T.
Green, Orin	-	-	-	-	Eugene.

---

Greenfield, James R.	-	-	-	-	Echo.
Griffin, Walter	-	-	-	-	Eugene.
Groner, Ferdinand	-	-	-	-	Scholl's Ferry.
Hadley, Paul	-	-	-	-	Jasper.
Hamilton, Charles L.	-	-	-	-	Roseburg.
Hamilton, Julia A.	-	-	-	-	Roseburg.
Hanson, Frank	-	-	-	-	Eugene.
Hanson, Rose	-	-	-	-	Eugene.
Harris, Lawrence T.	-	-	-	-	Eugene.
Harter, Glen C.	-	-	-	-	San Jose, Cal.
Hawkins, Clara	-	-	-	-	Eugene.
*Hawthorne, Edgar S.	-	-	-	-	Eugene.
Hemenway, Minerva	-	-	-	-	Springfield.
Henderson, Charles	-	-	-	-	Eugene.
Holcomb, Nadie	-	-	-	-	New Bridge.
Holt, Linnia A.	-	-	-	-	Eugene.
Holt, Oscar J.	-	-	-	-	Talent.
Hovey, A. Guy, Jr.	-	-	-	-	Eugene.
Hovey, Carrie M.	-	-	-	-	Eugene.
Hughes, James M.	-	-	-	-	North Powder.
Hughes, Leila L.	-	-	-	-	Astoria.
Hulin, Lester G.	-	-	-	-	Eugene.
Hunter, Ethel M.	-	-	-	-	Ilwaco, W. T.
Jaggard, Minnie A.	-	-	-	-	Oregon City.
Johnson, Eugenia F.	-	-	-	-	Eugene.
Johnson, George W.	-	-	-	-	Paisley.
Johnson, Virgil V.	-	-	-	-	Eugene.
Kelly, Bessie	-	-	-	-	Springfield.
Kindt, John O.	-	-	-	-	Scholl's Ferry.
Kubli, Kaspar K.	-	-	-	-	Jacksonville.
Knutson, Charles L.	-	-	-	-	Glen Ellen, Cal.
Lauer, Carrie	-	-	-	-	Eugene.

\*Died February 14, 1889.

Lauer, Emanuel H.	-	-	-	-	Eugene.
Levis, S. Etta	-	-	-	-	Harrisburg.
Linn, Fletcher	-	-	-	-	Jacksonville.
Linn, George D.	-	-	-	-	Jacksonville.
Lockwood, Charles E.	-	-	-	-	Eugene.
Martin, Carey F.	-	-	-	-	Eugene.
Masters, Frank K.	-	-	-	-	Portland.
Mathews, C. Grace	-	-	-	-	Dayton, W. T.
Matlock, Edis D.	-	-	-	-	Eugene.
Matlock, Lulu S.	-	-	-	-	Eugene.
McAlister, Edward H.	-	-	-	-	Portland.
McClaren, William F.	-	-	-	-	Eugene.
McClung, Ina D.	-	-	-	-	Eugene.
McClure, Angie	-	-	-	-	Goshen.
McClure, Horace	-	-	-	-	Portland.
McClure, John S.	-	-	-	-	Eugene.
McClure, Walter A.	-	-	-	-	Portland.
McCormac, William	-	-	-	-	Astoria.
McKinlay, Arthur P.	-	-	-	-	Portland.
Miller, Robert M.	-	-	-	-	Silver Lake.
Millican, Aggie	-	-	-	-	Walterville.
Millican, Bell	-	-	-	-	Walterville.
Millican, Oscar	-	-	-	-	Walterville.
Mingus, Everett	-	-	-	-	Ashland.
Mitchell, Albert B.	-	-	-	-	Portland.
Mulkey, Frank M.	-	-	-	-	Portland.
Mulligan, Wesley T.	-	-	-	-	McMinnville.
Norris, George W.	-	-	-	-	Eugene.
Norris, Myra E.	-	-	-	-	Eugene.
Offutt, Maud M.	-	-	-	-	Eugene.
Owen, Henrietta	-	-	-	-	Eugene.
Page, Estella M.	-	-	-	-	Eugene.
Park, Ina D.	-	-	-	-	Eugene.

Patterson, Clyde L.	-	-	-	-	Eugene.
Patterson, Kate	-	-	-	-	Eugene.
Pattison, Belle M.	-	-	-	-	Eugene.
Pengra, Edgar B.	-	-	-	-	Springfield.
Perry, Ida	-	-	-	-	New Bridge.
Porter, Frank H.	-	-	-	-	Shedd.
Porter, Mary E.	-	-	-	-	Shedd.
Potter, Annie M.	-	-	-	-	Eugene.
Reid, Mollie A.	-	-	-	-	Creswell.
Rhinehart, Lillian	-	-	-	-	Eugene.
Riggs, Wilmer W.	-	-	-	-	Brownsville.
Robnett, Volney W.	-	-	-	-	Eugene.
Roberts, Annie M.	-	-	-	-	The Dalles.
Roberts, Daniel H.	-	-	-	-	The Dalles.
Roberts, Thomas M.	-	-	-	-	The Dalles.
Ross, George F.	-	-	-	-	Marshfield.
Rowland, Theodore D.	-	-	-	-	Eugene.
Sawyers, Bessie	-	-	-	-	Eugene.
Sawyers, Loulu M.	-	-	-	-	Eugene.
Scofield, Ida R.	-	-	-	-	Marshfield.
Shambrook, Benjamin F.	-	-	-	-	Roseburg.
Sharples, Ada W.	-	-	-	-	Eugene.
Shelton, Alberta	-	-	-	-	Eugene.
Smith, Albert M.	-	-	-	-	Harrisburg.
Smith, Augustus A.	-	-	-	-	Harrisburg.
Smith, George H.	-	-	-	-	Linkville.
Snodgrass, Nellie	-	-	-	-	Eugene.
Stanard, Frank C.	-	-	-	-	Brownsville.
Stevens, Len	-	-	-	-	Eugene.
Straight, Nellie G.	-	-	-	-	Eugene.
Taylor, Frank M.	-	-	-	-	Halsey.
Taylor, Minnie C.	-	-	-	-	Monroe.
Taylor, Otis	-	-	-	-	Halsey.

---

Test, Edwin C.	-	-	-	Eugene.
Test, Emma R.	-	-	-	Eugene.
Thompson, Herbert C.	-	-	-	Eugene.
Tilton, Clara L.	-	-	-	Coburg.
Todd, Thomas E.	-	-	-	Elk Head.
Underwood, Anna	-	-	-	Eugene.
Underwood, Charles	-	-	-	Eugene.
Veazie, Arthur L.	-	-	-	Dallas.
Veazie, J. Clarence	-	-	-	Dallas.
Waite, Douglas	-	-	-	Roseburg.
Wallis, Webster	-	-	-	Eugene.
Walters, Joseph G.	-	-	-	Lakeview.
Washburne, Emma A.	-	-	-	Junction City.
Washburne, William C.	-	-	-	Junction City.
Ware, Frank	-	-	-	Eugene.
Welch, George F.	-	-	-	Astoria.
Wells, Frank A.	-	-	-	East Portland.
Wheeler, Alfred C.	-	-	-	Springfield.
Whipple, Maggie	-	-	-	Cottage Grove.
Widmer, Joseph M.	-	-	-	Eugene.
Widmer, Maggie M.	-	-	-	Eugene.
Williams, John B.	-	-	-	Oakland, Cal.
Wilson, Harley P.	-	-	-	Eugene.
Wilson, Olin C.	-	-	-	Portland.
Wing, Lewis	-	-	-	Independence.
Woodworth, Loyal E.	-	-	-	Salem.
Worrell, John F.	-	-	-	Glen Ellen, Cal.
Young, Effie E.	-	-	-	Milwaukie.
Young, Joseph E.	-	-	-	Milwaukie.

## **Courses of Instruction.**

---

### **I. THE CLASSICAL COURSE.**

This course affords opportunity for a careful study of the Latin and Greek languages, rich in the accumulated wisdom of the most intellectual nations in the past history of our race. It also gives the student access to much of the garnered intellectual wealth of our own English tongue.

### **II. THE SCIENTIFIC COURSE.**

This course differs from the preceding in giving special attention to the French or German language, instead of the Greek, and in giving a wider range to the study of mathematics and some of the physical sciences.

### **III. THE LITERARY COURSE.**

This course differs from the preceding courses in giving an opportunity for the study of the English and Anglo-Saxon languages, in place of the Greek of the Classical, or the French or German of the Scientific course, and is an attempt to meet the wants of those who think that a higher discipline of the mind can be obtained from the study of the English language than from the study of Greek, German or French.

Each of these three courses extends through four years of study and leads to the same degree of Bachelor of Arts.

### **THE ENGLISH COURSE.**

In accordance with the following resolution of the

Board of Regents, a four years' English Course has been adopted :

*Resolved*, That there be established in the University a four years' course of study which shall not include Latin, Greek, German or French, and any student having pursued such a course and passing an examination therein satisfactory to the Faculty shall be entitled to a certificate of that fact, properly signed by the President of the Faculty."

After January 1, 1890, all students taking a study not in any of these courses, will be required to pay tuition.

The Portland High School prepares students to enter the University.

The Public Schools of Eugene, will also prepare students for the University.

#### PARTIAL COURSE.

Students who have no wish, or are not able from any cause, to take any one of the above courses, will be permitted to select and pursue such studies in any of the regular courses as they may wish, if approved by the Faculty. Such student, at any time, may receive a certificate, signed by the President, stating the branches studied.

All candidates for admission to any of these courses will be required to pass a satisfactory examination.



# COURSE OF INSTRUCTION.

## FIRST YEAR.

### FIRST TERM.

CLASSICAL.	SCIENTIFIC.	LITERARY.	ENGLISH.
Elementary Algebra, Latin Grammar, Greek Grammar.	Elementary Algebra, Latin Grammar, German or French Grammar.	Elementary Algebra, Latin Grammar, Whitney's English Grammar.	Elementary Algebra, Book Keeping, Whitney's English Grammar.

### SECOND TERM.

Elementary Algebra, Latin Lessons, Greek Lessons.	Elementary Algebra, Latin Lessons, German or French Grammar.	Elementary Algebra, Latin Lessons, Whitney's English Grammar.	Elementary Algebra, Book Keeping, Whitney's English Grammar.
---	--	---	--

### THIRD TERM.

Elementary Algebra, Latin Reader, Xenophon.	Elementary Algebra, Latin Reader, German or French Reader.	Elementary Algebra, Latin Reader, Elements of English Literature.	Elementary Algebra, Book Keeping, Elements of English Literature
---	--	---	--

## SECOND YEAR.

### FIRST TERM.

Cæsar, Xenophon, Geometry.	Cæsar, German or French, Geometry.	Cæsar, Webster and Milton, Geometry.	Elementary Rhetoric, Webster and Milton, Geometry.
----------------------------------	--	--	--

### SECOND TERM.

Geometry, Cæsar, Greek, Algebra.	Geometry, Cæsar, Classic German or French.	Geometry, Cæsar, Addison and Shakespeare.	Geometry, Commercial Law, Addison and Shakespeare.
---	--	---	--

### THIRD TERM.

Algebra, Sallust, Greek.	Algebra, Sallust, Classic German or French.	Algebra, Sallust, Whitney's Life and Growth of Language.	Plane Trigonometry, Science of Government, Whitney's Life and Growth of Language.
--------------------------------	---	---	--

## THIRD YEAR.

### FIRST TERM.

Cicero, Iliad, Algebra.	Cicero, German or French, Algebra.	Cicero, Anglo-Saxon, Algebra.	Surveying, Elementary Chemistry, Ancient History.
-------------------------------	--	-------------------------------------	---

### SECOND TERM.

Memorabilia, Virgil, Geometry, Trigonometry.	German or French, Virgil, Geometry, Trigonometry.	Anglo-Saxon, Virgil, Geometry, Trigonometry.	Natural Philosophy, Medieval History, Physiology.
---	--	---	---

### THIRD TERM.

Ancient History, Analytic Geometry, Livy.	Ancient History, Analytic Geometry, German or French.	Ancient History, Analytic Geometry, Anglo Saxon.	Natural Philosophy, Modern History, Zoology.
---	---	--	--

## FOURTH YEAR.

### FIRST TERM.

Rhetoric, Demosthenes, Modern History.	Rhetoric, Calculus, or Surveying, Modern History.	Rhetoric, Surveying, Modern History.	Botany, Mineralogy, Rhetoric.
--	---	--	-------------------------------------

### SECOND TERM.

Rhetoric, Physical Features, Physiology, Zoology, Livy, Tacitus.	Rhetoric, Physical Features, Physiology, Zoology, Calculus, or Surveying.	Rhetoric, Physical Features, Physiology, Zoology, Surveying, (or Medieval History).	Rhetoric, Geology, Political Economy.
---	---	---	---

### THIRD TERM.

Horace, Zoology, English Literature.	Calculus, or Surveying, Zoology, English Literature.	Surveying or Esthetics, Zoology, English Literature.	English Literature, Constitution, Moral Science.
--	--	--	--

## FIFTH YEAR.

### FIRST TERM.

Botany, Chemistry, Mechanics.	Botany, Chemistry, Mechanics.	Botany, Chemistry, Mechanics.
-------------------------------------	-------------------------------------	-------------------------------------

### SECOND TERM.

Political Economy, Physics, Logic or Chemical Analysis.	Political Economy, Physics, Logic or Chemical Analysis.	Political Economy, Physics, Logic.
---	---	--

### THIRD TERM.

Constitution, Tusculanæ Disputationes, Physics.	Constitution, Botany, Physics.	Constitution, Botany, Physics.
---	--------------------------------------	--------------------------------------

## SIXTH YEAR.

### FIRST TERM.

Astronomy, Psychology, History of Civilization, Ethnology.	Astronomy, Psychology, History of Civilization, Ethnology.	Astronomy, Psychology, History of Civilization, Ethnology.
---	---	---

### SECOND TERM.

Astronomy, Mineralogy, Geology, Moral Science.	Astronomy, Mineralogy, Geology, Moral Science.	Astronomy, Mineralogy, Geology, Moral Science.
---	---	---

### THIRD TERM.

Geology, International Law.	Geology, International Law.	Geology, International Law.
--------------------------------	--------------------------------	--------------------------------

Throughout the courses there will be weekly recitations in Elocution and Composition. Text-Books—Bancroft's English Composition; — Elocution.

## Text Books.

---

Latin Grammar, . . . .	Andrews & Stoddard.
Latin Lessons, . . . .	Andrews.
Cæsar, . . . .	Andrews.
Sallust, . . . .	Chase & Stuart.
Cicero, . . . .	Stuart.
Virgil, . . . .	Chase & Stuart.
Livy, . . . .	Lincoln.
Tacitus, . . . .	Chase & Stuart.
Horace, . . . .	Chase & Stuart.
Tusculanæ Disputationes, . . . .	Chase & Stuart.
Greek Grammar, . . . .	Goodwin.
Greek Lessons, . . . .	Leighton.
Xenophon's Anabasis, . . . .	Goodwin.
Greek Prose Composition, . . . .	Boise.
Iliad, . . . .	Boise.
Memorabilia, . . . .	Anthon.
Demosthenes De Corona, . . . .	D'Ooye.
The Cumulative Method (German), . . . .	Dreyspring.
Easy Lesson in German, . . . .	Dreyspring.
The German Verb Drill, . . . .	Dreyspring.
First German Reader, . . . .	Dreyspring.
German Grammar, . . . .	Cook's Otto.
Various authors in Classic German and French,	
French Grammar, . . . .	Otto.
Anglo-Saxon, . . . .	March.
Beowulf, . . . .	Harrison & Sharp.
Specimens of English Literature, . . . .	Skeat.

English Grammar, . . . .	W. D. Whitney.
Elementary Rhetoric, . . . .	D. J. Hill.
Elements of English Literature,	Shaw.
Webster, . . . . .	Hudson.
Milton, . . . . .	Sprague.
Addison, . . . . .	Arnold.
Shakespeare, . . . . .	Hudson.
Life and Growth of Language, -	W. D. Whitney.
Rhetoric (Science), . . . . .	D. J. Hill.
English Literature, . . . . .	Swinton.
Aesthetics, . . . . .	Day.
Physiology, . . . . .	Cutter.
History of Civilization, . . . . .	Guizot.
Logic, . . . . .	Hill's Jevon's.
Political Economy, . . . . .	Wayland.
Constitution, . . . . .	Story.
Psychology (Human Intellect),	Porter.
Moral Science, . . . . .	Porter.
International Law, . . . . .	Woolsey.
Botany, . . . . .	Wood's Class Book.
Geology, . . . . .	LeConte.
Ancient History, . . . . .	Anderson.
Mediæval History, . . . . .	Ploetz.
Modern History, . . . . .	Anderson.
Natural Philosophy, . . . . .	Kimbal's Olmsted.
Chemistry, . . . . .	Wurtz.
Chemical Analysis, . . . . .	Brush & Fresenius.
Elementary Algebra, . . . . .	Brooks.
Geometry, . . . . .	Wentworth.
University Algebra, . . . . .	Olney.
Trigonometry, . . . . .	Wentworth.
Analytical Geometry, . . . . .	Loomis.
Calculus, . . . . .	Loomis.

## Reading Room.

### PERIODICALS IN READING ROOM.

#### QUARTERLIES.

Archæological Journal,  
Bibliotheca Sacra,  
Edinburg Review,  
British Quarterly,  
Church Quarterly,  
The Quarterly Review,  
Baptist Quarterly,  
Political Science Quarterly,  
Quarterly Journal of Economics.

#### BI-MONTHLIES.

Methodist Review,  
American Chemical Journal,  
The Laukershine.

#### MONTHLIES.

Chemical Society's Journal,  
Geological Magazine,  
Bulletin of the Torrey Botanical Club,  
Harper's New Monthly Magazine,  
The Sidereal Messenger,  
The Overland Monthly,  
Education;  
American Naturalist,  
American Monthly Microscopical Journal,  
Scottish Review,

Monthly Weather Review,  
Scribner's Magazine,  
The Forum,  
American Journal of Science,  
Atlantic Monthly,  
Magazine of American History,  
Art Amateur,  
The Century,  
North American Review,  
Popular Science Monthly,  
Blackwood's Edinburg Magazine,  
Contemporary Review,  
Fortnightly Review,  
Nineteenth Century,  
The Voice,  
The Musical Record.

## WEEKLIES.

Pall Mall Budget,  
The Times (London),  
New York Tribune,  
New York World,  
The Literary World,  
The Publishers' Weekly,  
\*Oregon City Courier,  
\*The Pacific Advocate,  
Catholic Sentinel,  
The World (Portland, Oregon).  
American Economist,  
Lake County Examiner.

---

\*These papers are sent free to the University reading room and are filed and carefully preserved.

## General Information.

---

The University of Oregon, by an Act of the State Legislature, was founded and located at Eugene City in 1872, and it was opened for the reception of students and giving instruction in 1876.

The management of its affairs is placed in a Board of Regents, appointed for a term of twelve years, by the Governor of the State and confirmed by the State Senate. The Board of Regents confers such degrees and grants such diplomas as other universities are wont to confer and grant.

The permanent endowment of the University consists of eighty thousand dollars, realized from the sale of the land granted to the State by the General Government for the purpose of establishing a University, and of a fund of fifty thousand dollars generously donated the University by Mr. Henry Villard.

Besides these two funds, the University will hereafter receive an annual income from the State of one-seventh of a mill on all taxable property.

### LOCATION.

The University is located at Eugene City, Lane county Oregon, one hundred and twenty miles south of Portland, on the Oregon & California Railroad. Eugene City is the county seat of Lane county, has four thousand inhabitants, and is situated amidst scenery of much natural beauty. The University campus lies south-east of Eugene,

about one mile from the city postoffice, and contains some eighteen acres of land.

#### BUILDINGS.

The University has on its campus two brick buildings. One was erected in part by the citizens of Lane county and finished by the State. It is one hundred and fifteen feet long, fifty-four feet wide, and three stories high, besides the basement. The second building, named by the Regents "Villard Hall," is made of brick, and has a concrete finish on the outside. It is one hundred and fifteen feet in length, sixty-nine feet wide and two stories high above basement.

#### LIBRARY.

The University Library occupies a room in Villard Hall and contains at present about three thousand volumes. A part of the books was bought at a cost of one thousand dollars, by Mr. Henry Villard. Another part has since been bought at a cost of seven hundred dollars, out of the income from the Villard endowment fund. The annual sum coming from the Villard fund for the purchase of books for the library is four hundred dollars. This money is now spent in buying books of reference for the use of the University.

Through the influence of the Hon. J. N. Dolph, Oregon's United States Senator, the library has been made the depository of all documents published by the general government at Washington. In the library room may also be found a large number of magazines, reviews and other periodicals published in England and America. There is no charge for the use of all these books and periodicals.

Much might be done towards preparing this University

for the place it ought and must fill in the future growth of the intellectual power of our State, if some man or men would, out of their abundance, give the University a library endowment fund.

#### APPARATUS.

The University has about two thousand dollars' worth of mathematical instruments. Students in surveying and engineering, by means of the solar compass and engineer's transit, can become acquainted with practical field work in their department, and by means of the sextant and other instruments they can learn the methods of finding the latitude and longitude of any place.

Students in Astronomy will have access for observatory practice to the sidereal clock, the forty-two-inch astronomical transit and the sextant, and with these instruments will be able to find the latitude and longitude, as well as the exact solar time of the University building by the methods used by astronomers and navigators.

The apparatus belonging to the department of Physics and Chemistry has cost the University more than three thousand dollars, and though such a collection of instruments can never be complete, it affords greater facilities for class illustrations than can be found elsewhere in the "Great Northwest."

The departments of Geology, Mineralogy and Natural History are provided with large and valuable collections to illustrate their teachings. Professor Condon's cabinet is already widely known on this coast, and is justly noted for its wonderful record of Oregon's former history.

To this collection, large additions of eastern and foreign minerals are yearly made, and the whole is freely used in



illustrating truth to the classes taught in these departments.

#### MUSEUM.

All the Express Companies doing business in the State have generously proposed to transport articles to the Museum free of charge ; weight of any one shipment not to exceed twenty-five pounds.

Address : UNIVERSITY OF OREGON,  
*Eugene City.*

[FOR MUSEUM.]

People in all parts of the State are respectfully requested to aid in building up the Museum by sending specimens that are interesting and instructive.

The articles received will be classified, labeled with the names of the contributors, and carefully preserved.

A valuable collection of birds and mammals has been contributed by J. H. McClung, of Eugene.

#### EXAMINATIONS.

An examination of new students is made in order to ascertain their scholarships, and assign them to the classes for which they are qualified. An examination of all students is also made at the end of each term for the purpose of ascertaining their progress and deciding what students shall graduate, or be promoted to higher classes.

#### GRADUATING STUDENTS.

In marking or grading, a scale of one hundred shall be used, and sixty (60) shall be the minimum.

A student who, in any one study, falls below sixty (60) is thereby conditioned as to his class standing, and in order to be restored to full standing he must pass in a re-examination some time before the regular examinations

of the following term ; when, however, a student falls below sixty in more than one study of the same term, or in one study in two consecutive terms, especially in the first and second terms of the year, he shall thereby forfeit or lose his class standing.

#### DEGREES.

The degree of Bachelor of Arts will be conferred on all students who have completed the Classical, the Scientific, or the Literary course as laid down in this catalogue.

A Bachelor of Arts of three years' standing may receive the degree of Master of Arts, provided, since graduation, he has sustained a good moral character and pursued some literary or scientific calling. Graduates of three years' standing, who wish to obtain this degree, should send their request to the Faculty on or before the first day of June.

#### EXPENSES.

There are no dormitories and no commons connected with the University. Board and lodging in private families may easily be found in the city at from \$3.00 to \$5.00 per week. Clubs may also be formed in which the cost of living is somewhat less.

All bills for tuition and incidentals must be paid quarterly in advance. Tuition is \$40 a year, and incidentals, \$10.

After the first of January, 1890, tuition will be free.

#### FREE SCHOLARSHIPS.

Each county in Oregon is entitled to one free scholarship in the Collegiate Department of the University, and an additional free scholarship for each member and joint

member of the Legislative Assembly to which such county shall at the time be entitled. Such students pay merely \$10 a year for incidentals.

#### LITERARY SOCIETIES.

There are connected with the University the Eutaxian Society for young ladies, and the Laurean Society for young gentlemen.

The Eutaxians meet on Friday of each week at 3 P. M., and the Laureans meet on the same day at 7:30 P. M. These societies use the same hall and have a common library, which is enlarged, yearly, by the purchase of new books. It now contains some one thousand volumes. The societies are well sustained, active and vigorous literary bodies. They occasionally have public debates, either in their own hall or in the large auditorium of the University. On these occasions they have had full halls and have earned much praise for their well managed debates.

#### GYMNASIUM.

The large hall formerly used for an auditorium is now occupied as a gymnasium. All of the students can avail themselves of its advantages.

#### IMPORTANT TO STUDENTS.

Students are forbidden :—

To enter a brewery or saloon.

To drink any intoxicating liquor while in attendance at the University, or on the way to or from the same, except on the prescription of a physician.

To use tobacco in any form while in the building or on the campus.

To carry concealed weapons.

To use profane or indecent language.

To attend skating rinks, public dances and dancing clubs at any time during a session of the University.

To injure the property or buildings of the University.

To stand or sit around the doors, or make any disturbing noise in the hall of the University buildings.

To join any college secret society.

To remain from room later than eleven o'clock at night, at social gatherings composed in whole or in part of students of the University.

To leave town without the permission of the President.

To change a recitation which has been assigned, without permission of the Faculty.

A student having been expelled from any other University or College in Oregon, or without a certificate of honorable dismissal from such institution, will not be received as a student in this University.

#### MATRICULATION PLEDGE.

The student, in writing his name below, thereby pledges himself to comply with all rules and regulations made for the government of the University, alike, those that are in force when he enters, and those that may be enacted during his connection with the University.

## By-Laws

Adopted by the Board of Regents Defining the Duties and Liabilities of the Students.

---

Any student who shall in anywise injure or destroy any property in the University, shall be liable therefor, and upon neglect or refusal to make such compensation as the Faculty shall determine to be reasonable, may be suspended or expelled.

When a student holding a county scholarship absents himself or herself during the term, the scholarship shall be deemed vacant: *Provided*, A scholar may be absent not longer than three months at a time, by obtaining the written consent of the Faculty.

When a student is necessarily absent on account of sickness ten weeks or more during any term, such student may be allowed one-half of the time on the next term, on account of such sickness.

Students holding scholarships are required to be present within ten (10) days from the beginning of the term or from the time of their appointment, otherwise their scholarships may be declared forfeited.

WHEREAS, The Constitution of this State, in Art. II, Sec. 4, provides that "For the purpose of voting, no person shall be deemed to have gained or lost a residence by means of his presence or absence while a student of any seminary of learning ;" therefore be it—

*Resolved*, That any person attending the University

---

upon a free scholarship, who shall vote at any local election in the city of Eugene, shall, for such unlawful act, be expelled therefrom by the Faculty, and in case any other student attending the University shall vote at any such election unlawfully, he shall be expelled by the Board of Regents ; and it is hereby made the duty of the Faculty to admonish the students of this by-law, and see that it is duly enforced.

*Resolved,* That hereafter the Faculty shall select from the graduating class, the student to deliver the Valedictory Address, and in so doing, shall have due regard to the comparative merits and attainments of said student.

The Faculty of the University are hereby authorized and required to prescribe such rules and regulations for the government of the students as may be deemed proper, and to annex and enforce such penalties as will secure their proper observance.

The Faculty are hereby authorized to require every student to sign an obligation to keep and abide by all rules and regulations made by the Faculty or the Board of Regents for the government or conduct of said student during his connection with the University.

## County Scholarships.

### The Law in Respect to County Scholarships.

SECTION 16. Each county in this State is entitled to one scholarship in the Collegiate department of the University, and an additional scholarship therein for each member and joint member of the legislative assembly to which such county shall at the time be entitled.

SEC. 17. Applicants for county scholarships must apply in writing for the same, to the county superintendent of common schools, at least one month before the commencement of the school year in which they seek to enter; and such superintendent shall receive such applications, and present the same to the county court of the county, when sitting for the transaction of county business, which court shall, with the aid of the county superintendent and such other person or persons as it may see proper to designate for that purpose, examine said applicants, at a time appointed by it therefor, and the scholarships to which such county may then be entitled, shall be awarded by such court, among the applicants found to possess the requisite qualifications, by lot. Whenever a vacancy occurs in a county scholarship, during the course of any school year, application may be made for it and the same awarded in the manner provided in this section; reasonable notice being first given of the time when the proceedings will take place.

SEC. 18. A person entering the University upon a county scholarship shall, at the commencement of the

term next following such entry, be subject to an examination by the Faculty, and if found disqualified by reason of want of educational attainment, physical capacity, or moral character, such person shall be dropped from the roll of students, and the scholarship upon which he or she entered shall thereupon become vacant.

SEC. 19. No person shall be eligible or entitled to the use of a county scholarship in the University, unless he or she has been an inhabitant of the county, to which it belongs, for one year immediately preceding the application therefor, nor unless such person possesses the qualifications, educational and otherwise, which the Board of Regents may prescribe for admission to the Collegiate Department thereof ; nor shall any person who has been convicted of a crime involving moral turpitude, or who is notoriously of bad reputation or evil habits, ever be eligible to admission into said University, upon such scholarship or otherwise.

Approved October 21, 1876.

County superintendents will examine applicants for county scholarships in the following branches :

Reading,	Written Arithmetic,
Writing,	English Grammar,
Orthography,	Geography,
Mental Arithmetic.	History United States.



## Amendments

TO AN ACT ENTITLED "AN ACT TO AID IN THE SUPPORT  
OF THE UNIVERSITY OF OREGON."

*Be it enacted by the Legislative Assembly  
of the State of Oregon:*

SECTION 1. That section 1 of an Act entitled, "An Act to Aid in the Support of the University of Oregon," approved October 17, 1882, be and the same is hereby amended to read as follows:

SEC. 1. That there is hereby levied an annual tax of one-seventh of one mill on the dollar upon all the taxable property within this State for University purposes, to be levied and collected as other taxes are levied and collected, and the fund arising therefrom shall be paid into the State Treasury and kept separate from other funds, and shall be known as the University Fund.

SEC. 2. That section 2 of said Act be amended to read as follows:

SEC. 2. That the funds arising from said tax, or so much thereof as may be necessary, be and the same is hereby appropriated annually for the support and maintenance of the University of Oregon and to keep the building, grounds and other property thereof in repair and make needed improvements thereto; and that from and after the first day of January, 1890, no charge or fee whatever shall be made or collected from any person or persons, residents of this State, who possess the necessary

qualifications to enter said University, for tuition in any of the literary departments thereof: *Provided*, A sum not to exceed ten dollars a year may be collected from each student for incidental expenses.

SEC. 3. That section 3 of said Act be amended to read as follows:

SEC. 3. That the money in this Act appropriated shall be drawn quarterly by the Regents of said University for the purpose of paying any deficiency that may exist in the payment of any of the items for which the same is appropriated, which deficiency shall be certified to the Secretary of State by the Executive Committee of said Regents.

SEC. 4. That section 4 of said Act to aid in the support of the University of Oregon be and the same is hereby repealed.

## Alumni.

1878.

NAME.	ADDRESS.
Robert S. Bean, B. S., Circuit Judge, - - -	Eugene.
Nellie A. Condon <i>McCornack</i> , B. S., - - -	Eugene.
Matthew S. Wallis, B. S., Int. Rev. Col., - -	Portland.
George S. Washburn, B. S., Lawyer, - - -	Eugene.
John C. Whittaker, B. S., Physician, Died 1888.	

1879.

Julia F. Adams <i>McDaniel</i> , A. B., - - -	Dayton.
Joel N. Percy, A. M., Lawyer, - - -	Columbia City.
Harvey C. Condon, B. S., County Judge. - -	Alkali.
Carrie Cornelius <i>McQuinn</i> , B. S., - - -	Portland.
Mary Hays, B. S., Teacher, - - -	McMinnville.
John A. McQuinn, B. S., Surveyor, - - -	Portland.

1880.

Thomas C. Powell, A. B., Deputy Sheriff, - -	Portland.
John W. Bean, B. S., Physician, - - -	Ellensburg, W. T.
Whitney L. Boise, B. S., Lawyer - - -	Portland.
Ione Cranfield, B. S., Died 1887.	
Charles F. Clark, B. S., Farmer, - - -	Clackamas.
Alfred Cooledge, B. S., Banker, - - -	Colfax, W. T.
Edward P. Geary, B. S., Physician, - - -	Medford.
Charles K. Hale, B. S., Farmer, - - -	Chesher.
Jacob F. Hill, B. S., Merchant, - - -	Eugene.
Adolphus F. McClain, B. S., Banker, - - -	Tacoma, W. T.
Agnes M. McCornack <i>Geary</i> , B. S., - - -	Medford.
Nettie M. McCornack <i>Collier</i> , B. S., - - -	Eugene.
William J. McDaniel, B. S., Physician, - -	Dayton.
Owen Osburn, B. S., Druggist, - - -	Brownsville.
Abraham S. Rosenthal, B. S., Business Man, -	Portland.

NAME.	ADDRESS.
Eva S. Rice, B. S., Teacher, - - - --	Portland.
Minerva Starr, B. S., Teacher, - - -	Junction.
Clifton A. Wass, B. S., Business Man, - - -	Portland.
Laban H. Wheeler, B. S., Lawyer, - - -	Tacoma, W. T.

## 1881.

Emery E. Burke, A. B., Died Oct. 30, 1883.	
Clay M. Hill, A. M., Baptist Minister, - - -	Eugene.
Edgar J. Maxwell, A. B., - - - -	Portland.
Claiborne A. Woody, A. M., Teacher,	
George E. Bushnell, B. S., Physician, - - -	Yaquina.
Anna Whiteaker, B. S., - - - -	Portland.
Charles S. Williams, B. S., Merchant, - - -	Eugene.

## 1882.

Arthur L. Frazer, A. M., Lawyer, - - -	Portland.
George M. Hoyt, A. M., Died Jan. 23, 1887.	
Chester F. Miller, A. M., Lawyer, - - -	Dayton, W. T.
George Noland, A. M., Lawyer, - - - -	Astoria.
Eva Rogers, A. B., - - - -	The Dalles.
Maggie E. Sergent <i>Conn</i> , A. B., - - - -	Paisley.
Edward Bailey, B. S. Physician, - - -	Eugene.
Seymour W. Condon, B. S., Lawyer, member Leg.	Eugene.
Alice Dorris, B. S., Teacher, - - - -	Eugene.
Ida Dunn <i>Pruett</i> , B. S., - - - -	California.
Mary E. McCornack, B. S., Prof. of Music, - - -	Eugene.
Reubena P. Spiller, B. S., Died Nov. 15, 1885.	

## 1883.

De Etta Cogswell, A. B., Died 1886.	
John N. Goltra, A. B., Physician, - - - -	Buffalo, N. Y.
Samuel E. McClure, A. M., Tutor, - - -	Eugene.
Woodson T. Slater, A. B., Dep. State Treas., - - -	Salem.
Emma Cornelius <i>Howell</i> , B. S., - - - -	Portland.
Mary Dorris <i>Condon</i> , B. S., - - - -	Eugene.
Alwilda E. Dunn, B. S., - - - -	Corvallis.
Thomas C. Judkins, B. S., Correspondent, - - -	San Francisco.

NAME.	ADDRESS.
Elma E. Lockwood <i>Eakin</i> , B. S.,	Eugene.
Wallace Mount, B. S., Lawyer,	Sprague.
Anna F. Pengra <i>Hill</i> , B. S.,	Eugene.
Minnie E. Porter, B. S., Teacher,	Cottage Grove.
Eliza L. Spencer, B. S., Teacher,	Eugene.
Jennie L. Spencer, B. S., Teacher,	Eugene.
Carrie L. Walker <i>Mount</i> , B. S.,	Sprague.
A. C. Woodcock, A. B., Lawyer,	Eugene.
1884.	
B. B. Beekman, A. M., Lawyer,	Jacksonville.
William W. Cardwell, A. B., Lawyer,	Burns.
Robert Collier, A. B., Surveyor,	Eugene.
George W. Hill, A. B., Baptist Minister,	East Portland.
J. M. Neville, A. B., died May 3, 1886.	
Caspar W. Sharples, A. M., Physician,	Philadelphia, Pa.
W. C. Taylor, A. B., Baptist Minister,	Buffalo, N. Y.
Joseph R. Whitney, A. M., Editor,	Albany.
Emma A. Bean, B. S., Teacher,	Seaton.
Walter T. Eakin, B. S., Farmer,	Eugene.
Jefferson D. Fenton, B. S., Physician,	McMinnville.
Bettie E. Shaw <i>Humphrey</i> , B. S.,	Eugene.
1885.	
Daniel W. Bass, A. B., Lawyer,	Seattle, W. T.
Henry F. McClure, A. B., Lawyer,	Seattle, W. T.
Anna Patterson, B. S., Teacher,	Eugene.
Royal F. Reasoner, A. B., Presbyterian Minister,	Heppner.
1886.	
George W. Dunn, A. B., Farmer,	Ashland.
Frank A. Huffer, A. B., Tutor,	Eugene.
William H. Gore, A. B., Teacher,	Medford.
Jennie McClure, A. B., Teacher,	Eugene.
Ida Patterson, A. B., Teacher,	Eugene.
Wm. J. Roberts, A. B., Student Polytechnic Institute,	Boston.
Wm. I. Vawter, A. B., Banker,	Medford.

---

NAME.	1887.	ADDRESS.
Eldon M. Brattain, A. B., Law Student,	- - -	Portland.
Emily Bristol, A. B., Teacher,	- - -	Portland.
Herbert S. Johnson, A. B., Theological Student,	- - -	Rochester, N. Y.
Robert C. Johnson, A. B., Law Student,	- - -	Portland.
Jessie B. McClung, A. B., Teacher,	- - -	Eugene.
Frank L. Moore, A. B., Law Student,	- - -	Portland.
Lura E. Murch, A. B., Teacher,	- - -	Eugene.
Edwin O. Potter, A. B., Law Student,	- - -	Portland.
Edward L. Powell, A. B., Correspondent,	- - -	San Francisco.
Septimus S. Spencer, A. B., Bank Clerk,	- - -	Eugene.

---

 1888.

Mark Bailey, Jr., A. B., Student at Harvard.		
Hazen A. Brattain, A. B.,	- - -	Paisley.
Arthur J. Collier, A. B., Surveyor,	- - -	Lebanon.
Leathe C. McCornack, A. B., Teacher,	- - -	Eugene.
Etta E. Moore, A. B., Teacher,	- - -	Portland.
John R. Pattison, A. B.,	- - -	Eugene.

---

 1889.

Lewis J. Davis, A. B.,	- - -	Union.
Emma C. Dorris, A. B.,	- - -	Eugene.
Frank M. Mulkey, A. B.,	- - -	Portland.
Ada W. Sharples, A. B.,	- - -	Eugene.

## Normal Graduates.

NAME.	1883.	ADDRESS.
Anna Bushnell, . . . . .	.	Eugene.
Sarah Chrisman, . . . . .	.	Cove.
Cutting S. Calef, . . . . .	.	Portland.
Nettie H. Denny, . . . . .	.	Sublimity.
Alvin J. Hackett, . . . . .	.	Oregon City.
Hamilton H. Hendricks, . . . . .	.	Fossil.
Oliver P. McFall, . . . . .	.	Portland.
Alice Parrish, . . . . .	.	Portland.
Lincoln Taylor, . . . . .	.	Latham.
<hr style="width: 10%; margin: 10px auto;"/>		
	1884.	
Darwin Bristow, . . . . .	.	Cottage Grove.
Nellie D. Brown <i>Swift</i> , . . . . .	.	Eugene.
Alva O. Condit, . . . . .	.	Turner.
Susie W. Moore, . . . . .	.	Baker City.
Fannie A. McDaniel, . . . . .	.	Dixie.
Lillie E. Porter, . . . . .	.	Shedd.
<hr style="width: 10%; margin: 10px auto;"/>		
	1885.	
Clara M. Adams, . . . . .	.	Portland.
Viola A. Colbert, died 1886. . . . .	.	
Marion F. Davis, . . . . .	.	Union.
Bessie Day, . . . . .	.	Eugene.
Charles R. Fenton, . . . . .	.	Lafayette.
Ida B. Hendricks, . . . . .	.	Eugene.
Albert S. Mulligan, . . . . .	.	Salem.
Kate S. Powell, . . . . .	.	Astoria.
A. Osie Walton, . . . . .	.	Eugene.

## Law School.

---

### FACULTY.

---

RICHARD H. THORNTON, LL. B.,

*Of the Oregon Bar, Lecturer on the Common Law, the Law  
of Contracts, and the Law of Evidence.*

HON. MATTHEW P. DEADY, LL. D.,

*U. S. District Judge, Lecturer on Constitutional Law.*

C. E. S. WOOD,

*Of the Oregon Bar, LL. B. of Columbia College, Lecturer  
on Equity.*

HON. L. L. McARTHUR,

*Formerly Judge of the Supreme Court of Oregon, Lecturer  
on Pleading.*



## Students in the Law School.

### SENIOR CLASS.

NAME.		ADDRESS.
M. L. Bergman,	- - - -	Portland.
W. E. Birkhimer, Capt. U. S. A.,		Vancouver, W. T.
George Holman,	- - - -	Portland.
F. L. Keenan,	- - - -	Portland.
S. J. McNall,	- - - -	Portland.
George M. Miller, A. M.,	- - - -	Portland.
F. R. Osborn, B. S.,	- - - -	Portland.
Perry Q. Rothrock, B. S.,	- - - -	The Dalles.
Maurice McKim, A. B.,	- - - -	Portland.
Alexander Sweek,	- - - -	Portland.

### JUNIOR CLASS.

Eldon M. Brattain, A. B.,	- - - -	Paisley.
W. W. Bretherton,	- - - -	Portland.
E. C. Bronaugh, Jr., A. B.,	- - - -	Portland.
Sydney Fox,	- - - -	Portland.
H. J. Green,	- - - -	Portland.
Robert C. Johnson, A. B.,	- - - -	Portland.
F. D. Kelsey,	- - - -	Portland.
C. E. Lockwood,		Eugene.
Lawrence A. McNary,	- - - -	Salem.
E. E. Miller,	- - - -	Portland.
Frank L. Moore, A. B.,	- - - -	Malheur City.
Edwin O. Potter, A. B.,	- - - -	Eugene.
J. C. Ruetenik,	- - - -	Portland.
J. U. Smith, B. S.,	- - - -	Lafayette.

---

T. P. Wagner,	-	-	-	-	Portland.
C. M. Wait,	-	-	-	-	Portland.
R. C. Wright,	-	-	-	-	Portland.
J. F. Yates,	-	-	-	-	Albany.

---

GRADUATES.

---

1886.

Geo. M. Hoyt, A. M., LL. B., (died '87.)					
John M. Pittenger, LL. B.	-	-	-	-	Albina.

---

1887.

William T. Muir, LL. B.,	-	-	-	-	Portland.
John T. Milner, LL. B.,	-	-	-	-	Portland.

---

1888.

Gilbert J. McGinn, LL. B.,	-	-	-	-	Portland.
Harold Pilkington, LL. B.,	-	-	-	-	Portland.
Henry F. McClure, A. M., LL. B.,	-	-	-	-	Seattle.
S. M. Shipley, B. S., LL. B.,	-	-	-	-	Seattle.
J. F. Boothe, LL. B.,	-	-	-	-	Portland.

---

Under the resolution of the Board of Regents, adopted at their annual meeting in June, 1884, all students who pursue the prescribed course of study in the School of Law, and shall receive a certificate thereof, and of their due proficiency therein, from the Professor thereof, are entitled to graduate therefrom and receive a diploma to that effect from the University, signed by the President of the Regents and the President of the Faculty, together with the Professor of said School of Law.

This Law School is held in the city of Portland, a metropolis which offers great advantages to students of

law, having an intelligent bar and excellent libraries, and affording easy access to the courts. The lectures are delivered in the evening.

The entire course consists of two sessions of about thirty weeks each, from October to May inclusive. It is intended to open the next session on Wednesday, 9th October, 1881.

The text-books, in the Junior year, are Blackstone, Kent, and Parsons on Contracts. In the Senior year, Gould on Pleading, Stephen on Evidence, Pomeroy on Equity, Cooley on Constitutional Limitations, and the General Laws of Oregon.

The tuition fee is sixty dollars per session, payable in equal installments in October, January and March.

Applications for admission are to be addressed to

RICHARD H. THORNTON,

*Attorney at Law,*

72 MORRISON STREET,

PORTLAND, OREGON.

## Course in Music.

Instructor, MISS MARY E. McCORNACK, B. S.  
(New England Conservatory).

Instruction is given on the Piano-forte and Organ, and in Voice Culture, Harmony and Theory.

### COURSE IN PIANO STUDY.

#### FIRST GRADE.

##### Studies.

Liebert & Stark's Stuttgart Conservatory Method. Part 1.

Emery—Foundation Studies, op. 35.

New England Conservatory Method. Part 1.

Læschorh—Easy Studies, op. 84.

##### Pieces.

Boccherini—Minuet Celebre. (Arranged by Sidus.)

Clementi—Sonatina in C, op. 36, No. 1.

Heller—Petite Tarantelle.

Lange—Little Wanderer, op. 8, No. 72.

Lange—Heather Rose, op. 78, No. 3.

Beethoven—Allegro, from Symphony in C. (Arranged by Sidus.)

##### Pieces.

Mozart—Finale from Symphony in Eflat. (Arranged by Sidus.)

Chopin—Spring Waltz, op. posthume.

Hummel—Rondo in C.

Gurlitt—Op. 101. Nos. 1, 8, 9, 10, 11, 19, 13.

Merkel—Op. 31. No. 2.

Diabelli—Duets.

Schumann—Melody, op. 68, No. 1. Happy Farmer, op. 68, No. 10. Little Piece, op. 68, No. 5. Soldier March, op. 68, No. 2.

### SECOND GRADE.

#### Studies.

Liebert & Stark's method. Part 2.  
 Kœhler—Twenty Studies, op. 50.  
 Kullak—Technical Studies.  
 Duvernoy—Ecole du Mécanisme, op. 120.  
 Lœschhorn—Studies, op. 65.

#### Pieces.

Beethoven—Sonatinas, in G and C minor, op. 49.  
 Durand—Chaconne, op. 62.  
 Heller—Il Penseroso.  
 Heller Bluettes—"Curious Story," slumber song.  
 Merkel—Op. 31, No. 3; op. 74, Nos. 3 and 4.  
 Lichner—"Alpine Violet," op. 95, No. 1.  
 Lichner—"On the Meadows," op. 95, No. 2.  
 Lœschhorn—"Goodnight."  
 Beethoven—"Für Elise."  
 Klein—"Child's Dream."  
 Clementi—Sonatina in F, op. 36, No. 4.  
 Mendelssohn—Scherzo, from A minor.  
 Symphony. (Arranged by Sidus.)  
 Mozart—Minuet from E flat Symphony. (Arranged by Sidus.)  
 Mozart—Sonate No. 1 and Sonate No. 7.  
 Schumann—Child Falling Asleep, op. 15, No. 12.  
 Schumann—At the Fireside, op. 15, No. 8.  
 Schumann—Revere, op. 15, No. 7.  
 Lange—Heather Bells, op. 33.

- Delibes—Pizzicati from "Sylvia" Ballet Music.  
Lichner—Easy Sonatinas.

## THIRD GRADE.

## Studies.

- Schmidt—Technical studies.  
Lœschhorn—Studies, op. 68, three books.  
Czerny—Etudes la Velocite.  
Heller—Etudes, op. 47, 46, 45.  
Bertini—Studies, op. 29.  
Raff Etudes.  
Bach—Two Part Inventions.

## Pieces.

- Bachmann—Les Sylphes. Valse Caprice.  
Durand—Valse in E flat, op. 83.  
Merkel—Polonaise in A, op. 28.  
Godard—Gavotte, op. 16.  
Military March from Faust. (Arranged by Davent.)  
Handel—Variations, "Harmonious Blacksmith."  
Schumann—Slumbler song, op. 124, No. 16.  
Raff—Valse Impromptu.  
Mendelssohn—Songs without words. Nos. 2, 4, 6, 9, 12, 35.  
Morzkowski—Serenate, op. 15.  
Spindler—Frusches Liben.  
Chopin—Valse in D flat, op. 64, No. 1.  
Schubert—Impromptu in A flat. Moments Musicaux, A flat,  
and F minor.  
Beethoven—Rondo in C, op. 51, No. 1.  
Mozart—Sonata in A.  
Lange—Pure as Snow, op. 31.  
Liszt—Consolation, E major, D flat.  
Heller—Tarantelle, A flat.  
Smith—"March Des Tambours."

## FOURTH GRADE.

## Studies.

Tausig—Daily Studies.

Kullak—Octave Studies.

Clementi—Gradus ad Parnassum. (Tausig.)

Cramer Studies, (Buelow's edition.)

Moscheles—Op. 70, book 1.

Chopin Etudes—Op. 10.

Bach. Preludes and Fugues. (Selected.)

## Pieces.

Schumann—Anabeske, op. 18.

Scharwenka—Polish Dance.

Rubinstein—Melody in F, op. 3, No. 1.

Mendelssohn—Songs without words. Nos. 1, 13, 14, 15, 30, 38, 44.

Rondo Capriccioso, op. 14.

Grieg—Norwegian Bridal Procession, op. 19, No. 2.

Rubinstein—Kammenoi-Ostrow, op. 10, No. 22.

Raff—"LaFileuse."

Selections from Moszkowski.

Schubert, Chopin, and modern composers.

Sonatas—Beethoven.

Ensemble Playing.

Our selections of studies and compositions, will be made from this course, and special studies and pieces will also be given, the needs of each pupil may require.

## VOICE CULTURE.

## FIRST GRADE.

Exercises for use of vocal organs, correct breathing, sight reading in all the major scales, intervals, pitch, position on staff exercises and simple songs on major keys.

**SECOND GRADE.**

Register explained, technique as in first grade; trill action, Concone exercises, op. 9, book 1; Marchesi exercises, op. 1,

**THIRD GRADE.**

Concone exercises, op. 11; Bonaldi exercises; Concone, op. 10, for soprano; Concone, op. 17.

For contralto; trill action; Lutgen, Technical Studies for Voice, minor scales; English songs; examinations in sight singing before entering fourth grade.

**FOURTH GRADE.**

Panofka, op. 81; Concone, op. 12; trill, and chromatic scales; Vaccai; Italian pronunciation and songs; Bordaqui, twelve studies, Oratorio.

**COURSE IN ORGAN STUDY.**

While there are no pipe organs in Eugene, the reed or cabinet organ is in almost every home. Instructions will be given on this instrument to the extent of its capabilities and scope.

In some of the larger reed organs a close imitation of the pipe organ can be reached and a fine effect produced by various combinations of "stops."

The best studies are selected from the standard "methods" for reed organs by W. H. Clark and others.

Easy preludes and postludes for church use; simple arrangements from scores of the best writers for pipe organ; art of accompanying hymns, anthems, motetts, choruses.

**PIECES FOR CHURCH AND CONCERT USE.**

Course of Study in Harmony. Elements of Harmony, by Stephen A. Emery.

**COURSE IN MUSICAL THEORY.**

"This embraces the Tone system, Rhythm, Tempo-Thematic Treatment, Musical Form and Analysis, Musical Instruments,



the compass and characteristic effects of the various instruments of the orchestra, etc., together with the principles underlying the meaning and interpretation of music."

#### COURSE IN SINGING AT SIGHT.

Normal music course by John W. Tufts, used by H. E. Holt, in the public schools of Boston.

"1. First Reader containing as its first part simple exercises and little songs. The second part consists of a collection of Rote-songs, to be learned by imitation.

"2. Charts to be used with the First Reader, the exercises intended to assist in the study of the book.

"3. Second Reader for intermediate and grammar schools, containing exercises and songs for one voice (soprano), duets for two sopranos, trios for two sopranos and alto, and trios for soprano, alto and bass.

"4. Charts to accompany the Second Reader and illustrative of the work in the book.

"5. Third Reader, trios and studies for two sopranos and alto, introducing more remote keys.

"6. Fourth Reader, trios and studies for soprano, alto and bass in all keys.

"7. Fifth Reader, studies and part songs for soprano, alto, tenor and bass, in all keys, and introducing the greater difficulties in harmony, rhythm, and modulation.

"These form strictly the educational series, in which a very great variety of harmonic combinations is introduced, and which serve as a preparation for all chorus work enabling the careful student to read at sight the oratorios, part-songs, glees, etc., of the best masters."

## Register of Pupils.

SEPTEMBER 1888 TO JUNE 1889.

### PIANO STUDY.

Baum, Sadie	-	-	-	-	Eugene.
Bradford, Ethel M.,	-	-	-	-	Oakland, Cal.
Churchill, Corrinne	-	-	-	-	Eugene.
Dorris, Benette	-	-	-	-	Eugene.
Elliott, Annette	-	-	-	-	Scholl's Ferry.
Friendly, Carrie	-	-	-	-	Eugene.
Friendly, Therese	-	-	-	-	Eugene.
Groner, Ferdinand	-	-	-	-	Scholl's Ferry.
Horn, Emma C.,	-	-	-	-	Eugene.
Huff, Mae	-	-	-	-	Eugene.
Knox, Maude	-	-	-	-	Cottage Grove.
Lauer, Barbara	-	-	-	-	Eugene.
Lauer, Carrie	-	-	-	-	Eugene.
Lauer, E. H.,	-	-	-	-	Eugene.
McKinlay, Arthur	-	-	-	-	Eugene.
Pengra, Clara	-	-	-	-	Springfield.
Robinson, Stella	-	-	-	-	Eugene.
Shelley, Maude	-	-	-	-	Eugene.
Veazie, Julia	-	-	-	-	Eugene.
Rhinehart, Lillian	-	-	-	-	Eugene.
Thompson, Herbert C.,	-	-	-	-	Eugene.

### VOICE CULTURE.

Adair, Veina	-	-	-	-	Eugene.
Coolidge, Etta A.,	-	-	-	-	Eugene.
Churchill, Corrinne	-	-	-	-	Eugene.

Cleaver, Nettie	-	-	-	-	-	Eugene.
Dorris, Kate	-	-	-	-	-	Eugene.
Dorris, Alice	-	-	-	-	-	Eugene.
Dorris, Stella	-	-	-	-	-	Eugene.
Friendly, Therese	-	-	-	-	-	Eugene.
Hill, Etta, (Mrs. W. I. Vawter)	-	-	-	-	-	Medford.
Holt, Linnia A.,	-	-	-	-	-	Eugene.
Huff, Mae	-	-	-	-	-	Eugene.
Knox, Mamie	-	-	-	-	-	Cottage Grove.
McDonald, C. A.,	-	-	-	-	-	East Portland.
Osburn, Mrs. E.,	-	-	-	-	-	Eugene.
Scott, Dora	-	-	-	-	-	Eugene.
Straight, Nellie	-	-	-	-	-	Eugene.
Test, Emma	-	-	-	-	-	Eugene.

## ORGAN STUDY.

Churchill, Corrinne	-	-	-	-	-	Eugene.
Knox, Mamie	-	-	-	-	-	Cottage Grove.
Roberts, Thomas	-	-	-	-	-	The Dalles.
Young, Effie	-	-	-	-	-	Milwaukie.

## SIGHT SINGING IN NORMAL MUSIC COURSE.

Elliot, Annette	-	-	-	-	-	Scholl's Ferry.
Friendly, Therese	-	-	-	-	-	Eugene.
Horn, Emma	-	-	-	-	-	Eugene.
Lauer, Barbara	-	-	-	-	-	Eugene.
Robinson, Stella	-	-	-	-	-	Eugene.
Shelly, Maude	-	-	-	-	-	Eugene.
Stevenson, Ruth	-	-	-	-	-	Eugene.
Thompson, Ethel	-	-	-	-	-	Eugene.
Thompson, Erma	-	-	-	-	-	Eugene.
Veazie, Julia	-	-	-	-	-	Eugene.
Veazie, Edith	-	-	-	-	-	Eugene.

Students intending to graduate will be required to take one year's course in Harmony and Theory.

Students who complete the course in pianoforte, voice or organ, are entitled to a testimonial certifying the same.

There will be a class of general instruction in music once a week, which all pupils will be required to attend. This will include a more thorough and comprehensive explanation of the rudiments of music than can usually be given in a course of lessons.

All pupils are graded and classed, and a pupils' recital will be held once each month, to which no one but pupils and teachers will be admitted—the object being to give abundant opportunity for the cultivation of the ability to play before critical audiences, and prepare for public recitals to which friends are invited.

These last will consist of a high order of music, and no student will take part except those who have attained the most progress.

In the University library there is a number of valuable musical works, including dictionaries, histories, biographies, and other works of reference for the student in music.

Students attending the University will be allowed the use of the piano free, and the weekly theory class is also to pupils in music.

#### TERMS OF TUITION.

For one hour private lesson in voice, piano or organ, \$1. Arrangements can be made with the instructor to study by the term or year, in private or in classes of from two to four.

The lessons vary in length, from thirty to sixty minutes each, and are given from one to four times a week, according to the needs of the pupil. Rates of tuition will therefore be according to length, frequency and regularity of lessons.

For further information, address—

MISS MARY E. McCORNACK,  
Eugene, Oregon.

School of Medicine,

PORTLAND, OREGON.

# School of Medicine.

## FACULTY.

HON. MATTHEW P. DEADY, LL. D.,

*President of the Board of Regents; Professor of Medical Jurisprudence.*

S. E. JOSEPHI, M. D.,

*Dean of the Faculty; Professor of Obstetrics and Psychological Medicine.*

CURTIS C. STRONG, M. D.,

*Secretary of the Faculty; Professor of Gynæcology and Clinical Obstetrics.*

HOLT C. WILSON, M. D.,

*Professor of Principles and Practice of Surgery and Clinical Surgery.*

OTTO S. BINSWANGER, M. D.,

*Professor of Chemistry and Toxicology.*

K. A. J. MACKENZIE, M. D.,

*Professor of Theory and Practice of and Clinical Medicine.*

A. C. PANTON, M. D.,

*Professor of General and Descriptive Anatomy.*

J. F. BELL, M. D.,

*Professor of Materia Medica and Therapeutics, and Microscopy.*

M. A. FLINN, M. D.,

*Professor of Physiology.*

G. M. WELLS, M. D.,

*Professor of Diseases of Children.*

HENRY E. JONES, M. D.,

*Professor of Clinical Gynæcology.*

W. H. SAYLOR, M. D.,

*Professor of Diseases of Genito-Urinary Organs and Clinical Surgery.*

A. J. GIESY, M. D.,

*Professor of Dermatology and Hygiene.*

F. B. EATON, M. D.,

*Professor of Diseases of Eye, Ear, Nose and Throat.*

WM. JONES, M. D.,

*Professor of Clinical Surgery.*

RICHARD NUN, M. D.,

*Demonstrator of Anatomy.*

### STUDENTS IN THE DEPARTMENT OF MEDICINE.

1888-89.

J. P. Tamiesie,	W. H. Ehlen,
H. A. Wall,	H. B. Deady,
C. W. Cornelius,	J. M. Wells,
J. D. Fenton,	G. W. Cusick,
J. W. Haines,	J. P. Sullivan,
J. H. Kime,	J. Huntington,
W. L. White,	E. E. Cawood,
R. Glendenning,	L. A. Hathaway,
D. W. Browne,	George E. Houck.

### ALUMNI.

1888.

Felix Callahan, M. D.,	J. Hunter Wells, M. D.,
A. E. Severance, M. D.,	H. J. Whitney, M. D.,
H. B. Stanley, M. D.,	H. A. Wright, M. D.,
Charles P. Thomas, M. D.	

1889.

J. P. Tamiesie, M. D.,	C. W. Cornelius, M. D.,
H. A. Wall, M. D.,	J. D. Fenton, M. D.,
J. W. Haines, M. D.	



## Text Books.

The following List of Books is given as a guide to students:

### FOR STUDY.

Anatomy.....	Gray.
Physiology.....	Foster.
Chemistry.....	Towne.
Materia Medica.....	{ Bartholow, Wood, Biddle.
Surgery.....	{ Bryant, Ashurst.
Theory and Practice.....	Flint.
Diagnosis.....	{ Loomis, Fenwick.
Obstetrics.....	{ Lusk, Leischman.
Diseases of Children.....	{ Lewis, Smith.
Gynæcology .....	{ Hart and Bar- bour, Thomas.
Opthamology and Otology, .....	{ Juler, Roosa.
Pathology and Histology, .....	{ Delafield, Prudden.
Laryngology.....	Cohen.
Dermatology .....	Duhring.
Toxicology.....	Taylor.
Orthopædic Surgery.....	
Nervous Diseases.....	Hamilton.
Insanity.....	Blandford.
Genito-Urinary Diseases	{ Van Buren and Keyes.
Medical Jurisprudence.....	Taylor.
Hygiene .....	Rohe.

### FOR REFERENCE.

Allen, Weisse, Quain.
Landois, Kirke, Yeo.
Attfield, Green, Med. Chem.
Nat. Disp., U. S. Disp.
Erichsen, Gross, Smith, Ham- ilton, Agnew.
Pepper, Bartholow, Loomis.
Gee.
Barnes, Tarnier and Cazeau, Bedford.
Meigs and Pepper, Eustace, Smith, Goodhart.
Emmet, Schröder, Sims.
Wells, Mittendorf, Politzer.
Friedlander, Cornil and Ran- vier.
Bosworth, Mackenzie.
Hyde, Neuman.
Blythe.
Bauer, Sayres.
Ross, Webber.
Bumstead, Otis, Thompson.
Tidy.

## Requirements for Admission.

Before matriculation the student must give satisfactory evidence of knowledge of the common English branches, including reading, writing, spelling, grammar, geography, arithmetic, etc.

Candidates having a degree in arts or science, or presenting a certificate from a high school or other institution in good standing, and matriculants of regular medical colleges, requiring preliminary examination, will be admitted without examination.

Before admission every student is required to obtain the Dean's receipt for the payment of the matriculation fee. It will, therefore, be necessary for the applicant to present himself at the office of the Dean, register his name as a student in the Department of Medicine and Surgery, and pay his fee.

### EXAMINATIONS.

Examinations for the Degree of Doctor of Medicine are held only once annually, during the last week of the session.

Students, however, who will enter the College for at least three full winter terms of study may receive their final examinations in Descriptive Anatomy, Physiology, Chemistry, Materia Medica and Therapeutics at the close of the second term. This will enable them to devote special attention to clinics and the practical branches during the third winter session. Students who take the three winter courses and desire to be examined in the elementary branches, as above indicated, will be required to advance one-half of the examination fee.

## Expenses.

---

ALL FEES ARE PAYABLE IN ADVANCE.

---

Matriculation (paid but once)	- . . . .	\$ 5 00
Tickets for full course of lectures	- . . . .	120 00
Demonstrator's Tickets (each course)	- . . . .	10 00
Examination Fee for Graduation	- . . . .	30 00

Tickets for lectures in one or more of the branches taught during the session are at the rate of \$20.00 for each branch.

Students who have paid for two full courses in this school are entitled to attend free of charge thereafter.

The examination fee for graduation need not be paid until thirty days prior to commencement of examinations, but all fees must be paid before a ticket entitling the holder to examination for the degree will be issued. The examination fee is returnable to any one who may withdraw from, or fail to pass, the examination.

BOARDING.—Good board, with rooms and all the usual accommodations, can be obtained in the vicinity of the College, at rates varying from \$4 to \$6 per week.

ADMISSION OF WOMEN.—Women will be admitted to matriculation, instruction and graduation on the same terms as men.

The School of Medicine is held in the city of Portland and, on account of members of its Faculty being connected with the principal hospitals, offers advantages

for clinical, as well as didactic, instruction, unsurpassed in the State.

Didactic lectures are delivered at the college building (on Good Samaritan Hospital grounds) and clinics held regularly at Good Samaritan and St. Vincent's Hospitals, while material from the county hospital is utilized whenever the advantage of the students demands. With an earnest desire to elevate the standard of medical education in this state, the faculty has resolved that hereafter matriculates who wish to obtain the degree, will be required to attend three courses of lectures (the last in this college) instead of two as has heretofore been the requirement in Oregon medical colleges, before coming up for final examination.

Each course consists of a winter session from October to March inclusive.

The degree of Doctor of Medicine is conferred by the University upon all students who are recommended for the same by the faculty of medicine, after having pursued the required course of study and passed satisfactory examinations.

The diploma issued by the University is signed by the President of the Regents and the President of the Faculty, together with members of the Faculty of the Department of Medicine.

For full particulars about course of study, fees, etc., address the Dean,

Or the Secretary,  
C. C. STRONG, M. D.,  
Abington Block,  
Portland, Or.

S. E. JOSEPHI, M. D.,  
133½ First Street,  
Portland, Or.

## Members of the Faculties and other Officers.

---

JOHN W. JOHNSON, A. M., President.

*Professor of Ethics and Latin.*

MARK BAILEY, PH. D.,

*Professor of Mathematics and Astronomy.*

THOMAS CONDON, PH. D.,

*Professor of History, Geology and Natural History.*

GEORGE H. COLLIER, LL. D.,

*Professor of Chemistry and Physics.*

JOHN STRAUB, A. M.,

*Professor of Greek and Modern Languages.*

BENJAMIN J. HAWTHORNE, A. M.,

*Professor of Mental Philosophy and English Literature.*

LUELLE C. CARSON,

*Professor of Rhetoric and Elocution.*

RICHARD H. THORNTON, LL. B.,

*Professor of the Science and Practice of Law.*

MARY E. McCORNACK, B. S.,

*Professor of Music.*

HON. MATTHEW P. DEADY, LL. D.,

*U. S. District Judge, Lecturer on Constitutional Law, and*

*Professor of Medical Jurisprudence.*

MR. C. E. S. WOOD,

*Of the Oregon Bar, LL. B., of Columbia College, Lecturer on  
Equity.*

HON. I. L. McARTHUR,

*Formerly Judge of the Supreme Court of Oregon, Lecturer on  
Pleading.*

S. E. JOSEPHI, M. D.,

*Professor of Obstetrics and Psychological Medicine.*

CURTIS C. STRONG, M. D.,

*Professor of Gynaecology and Clinical Obstetrics.*

HOLT C. WILSON, M. D.,

*Professor of Principles and Practice of Surgery and Clinical  
Surgery.*

OTTO S. BINSWANGER, M. D.,

*Professor of Chemistry and Toxicology.*

K. A. J. MACKENZIE, M. D.,

*Professor of Theory and Practice of Medicine and Clinical  
Medicine.*

A. C. PANTON, M. D.,

*Professor of General and Descriptive Anatomy.*

J. F. BELL, M. D.,

*Professor of *Materia Medica* and Therapeutics, and Micro-  
scopy.*

M. A. FLINN, M. D.,

*Professor of Physiology.*

---

G. M. WELLS, M. D.,  
*Professor of Diseases of Children.*

HENRY E. JONES, M. D.,  
*Professor of Clinical Gynæcology.*

W. H. SAYLOR, M. D.,  
*Professor of Diseases of Genito-Urinary Organs and Clinical  
Surgery.*

A. J. GIESY, M. D.,  
*Professor of Dermatology and Hygiene.*

F. B. EATON, M. D.,  
*Professor of Diseases of the Eye, Ear, Nose and Throat.*

WM. JONES, M. D.,  
*Professor of Clinical Surgery.*

RICHARD NUN,  
*Demonstrator of Anatomy.*

FRANK A. HUFFER, A. B.,  
*Tutor.*

S. E. McCLURE, A. M.,  
*Tutor.*



## Summary.

---

Students in the Classical, Scientific, Literary and English Courses, . . . . .	185
School of Law, . . . . .	28
Course in Music, . . . . .	53
School of Medicine, . . . . .	18
<hr/>	
Total, . . . . .	284



## INDEX.

---

Calendar, 1889-90.....	2
Days on which University will be in session.....	3
Schedule of Recitations.....	4
Board of Regents .....	5
Faculty .....	6
Students in the Classical, Scientific and Literary Courses.....	7
Course of Instruction.....	13
Course of Instruction—broadside following page 14.	
Text Books.....	15
Reading Room.....	17
General Information.....	19
By-Laws.....	26
County Scholarships—Law in respect to.....	28
Amendments .....	30
Alumni .....	32
Normal Graduates.....	36
Law School.....	37
Students in Law School.....	38
Graduates.....	39
Course in Music.....	41
Pieces for Church and Concert use.....	45
Register of Pupils.....	47
School of Medicine.....	51
Faculty.....	53
Alumni .....	54
Text Books.....	55
Requirements for Admission .....	56
Expenses.....	57
Members of Faculty and other officers.....	59
Summary .....	62