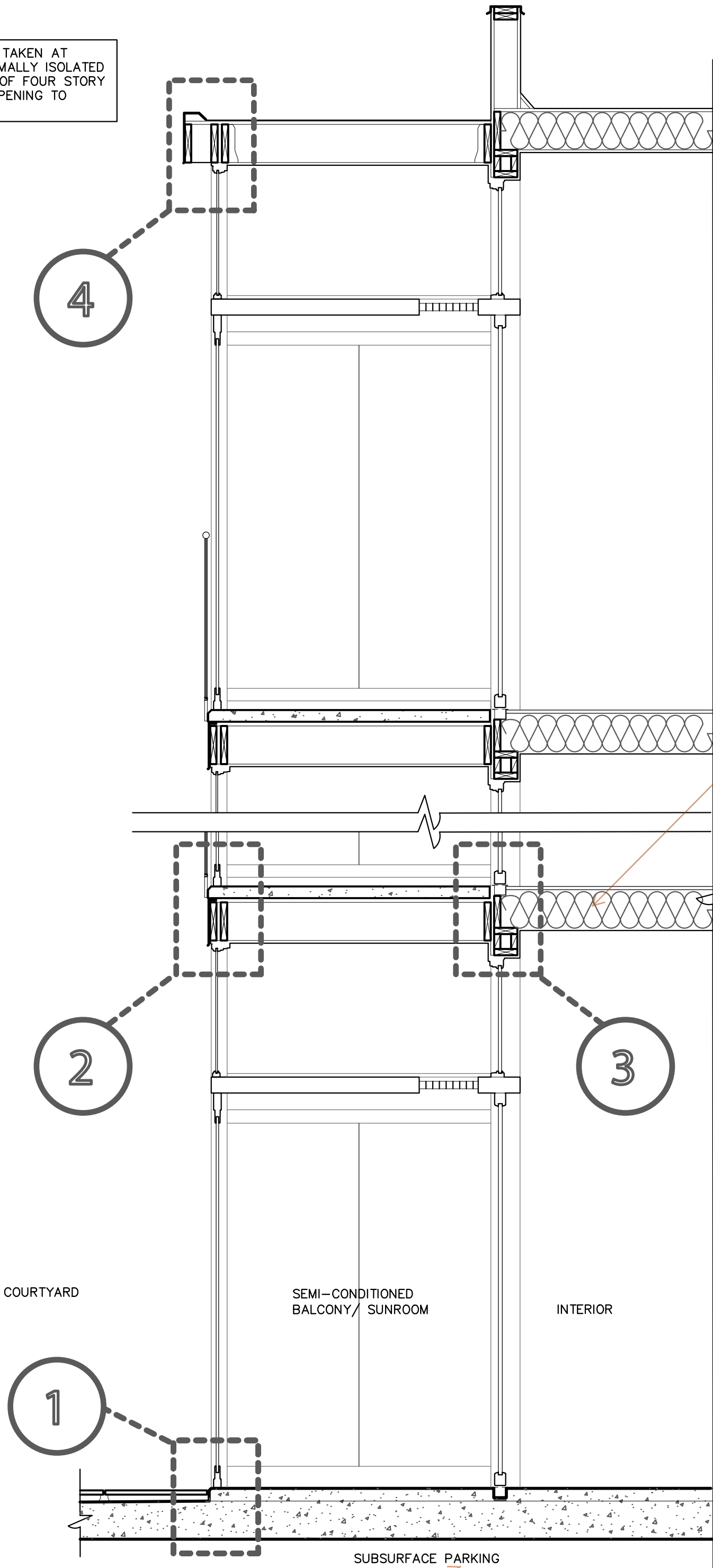


I'm not sure if this wouldn't be more efficient where most of the occupant hours would be, about 5' to the right?

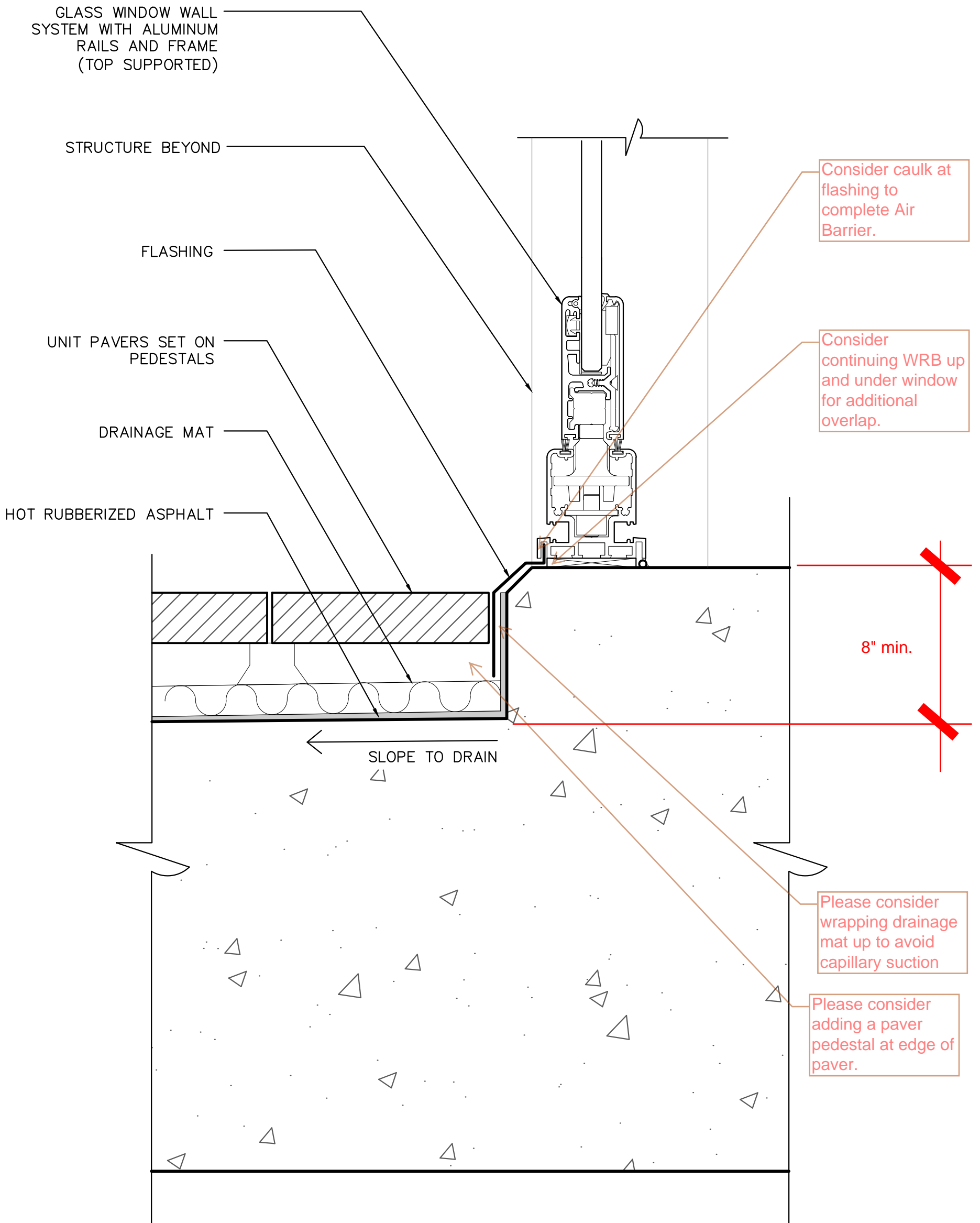
NOTE: WALL SECTION TAKEN AT SOUTH-FACING, THERMALLY ISOLATED SOLAR GAIN SPACES OF FOUR STORY HOUSING COMPLEX, OPENING TO COURTYARD.



Why would insulation be here?
Consider tracing the insulation path in the wall section

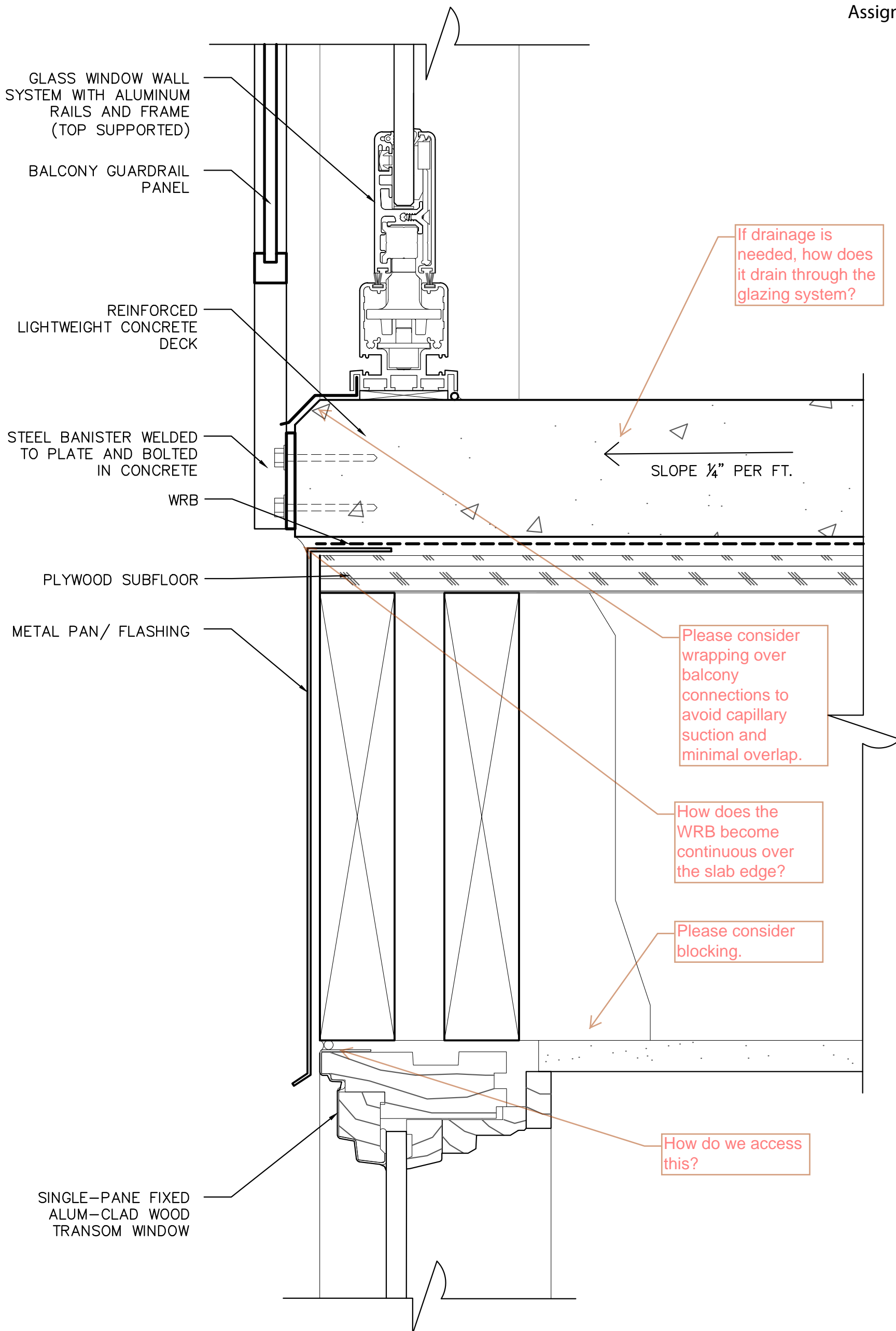
If sub-surface parking is not heated, then insulation is required at this floor assembly.

Wall Section
Scale : 1/2" = 1' - 0"



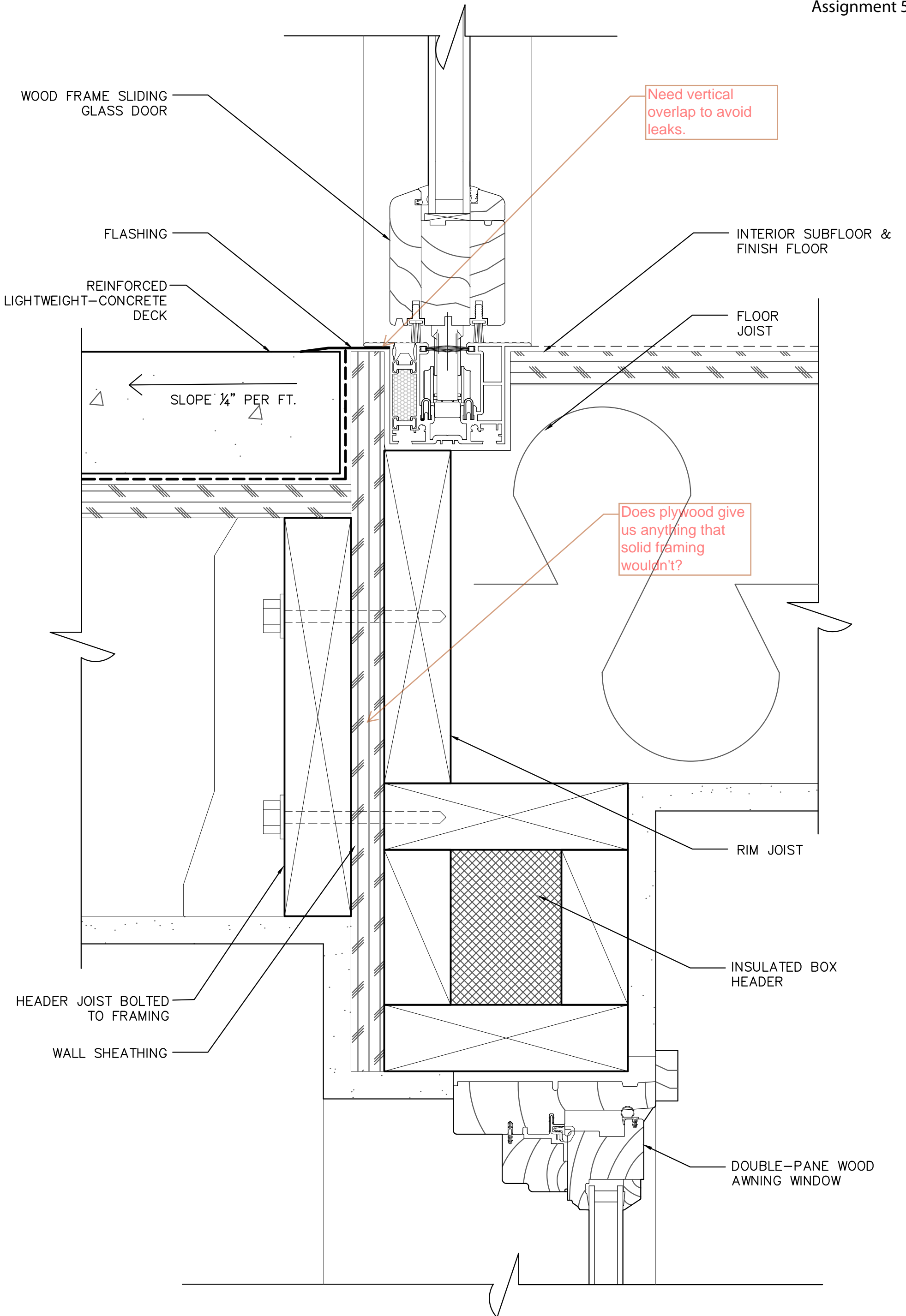
Ground Level Courtyard Detail

Scale : 6" = 1' - 0"



Balcony Window Wall Sill Detail

Scale : 6" = 1' - 0"



Interior (thermal enclosure) Wall Detail

Scale : 6" = 1' - 0"

NOTE: DETAIL ADAPTED FROM GRAPHIC GUIDE TO WOOD CONSTRUCTION. CURB IS USED IN CONJUNCTION WITH A SCUPPER.

