

1

WINDOW HEAD DETAIL

SCALE 6" = 1'-0"

Megan Coyle
Assignment #3

Arch 510 HPE
April 17th, 2010

GYP. BOARD

PLYWOOD SHEATHING

PRODUCT WITH VAPOR,
AIR & WATER RESISTIVE
BARRIERS INCORPORATED

RIGID INSULATION

VERTICAL SUPPORTS

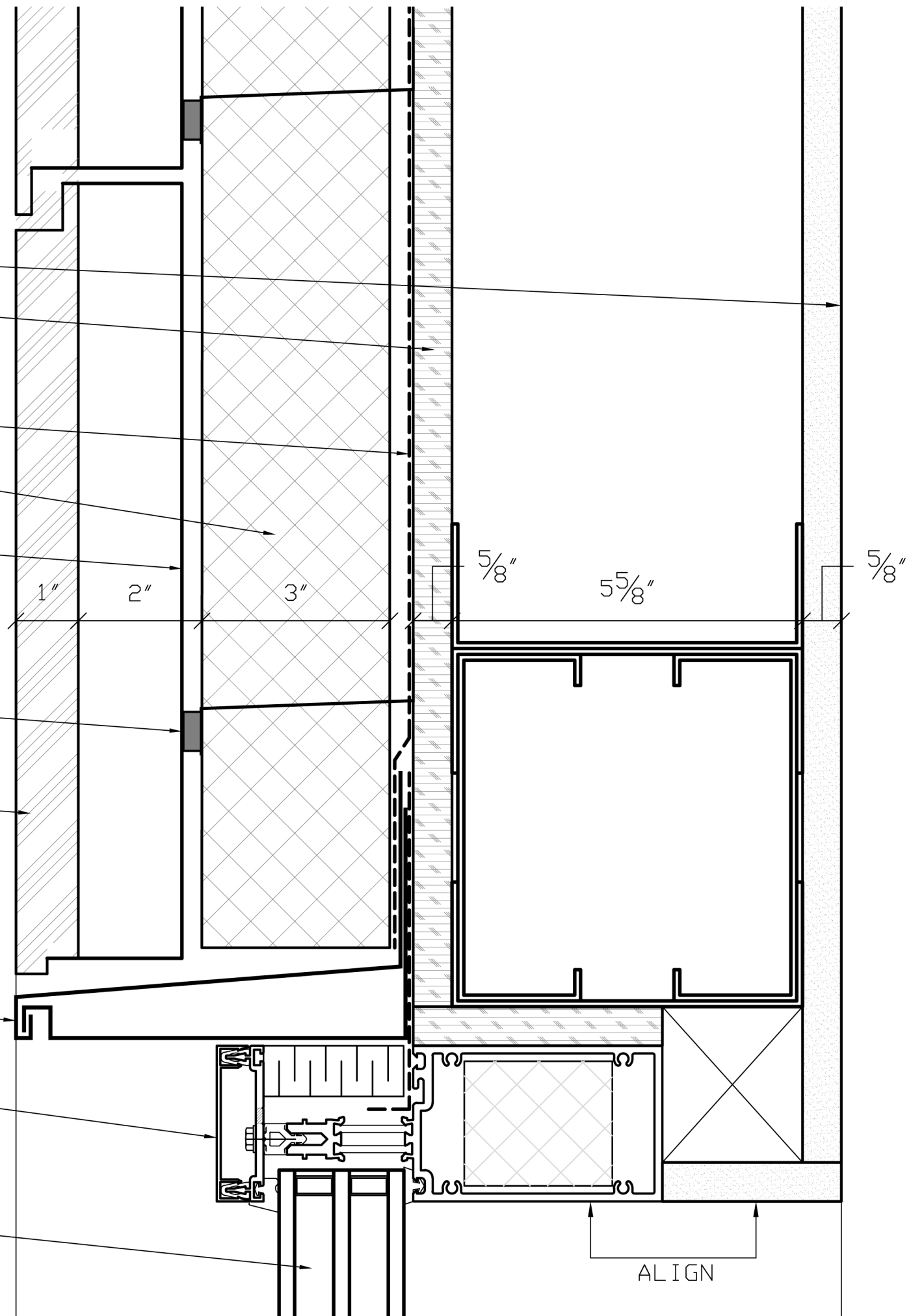
HORIZONTAL SUPPORTS
WITH THERMAL BREAK

TERRACOTTA CLADDING

FLASHING

CURTAIN WALL SYSTEM

TRIPLE GLAZING



2

WINDOW SILL DETAIL

SCALE 6" = 1'-0"

Megan Coyle
Assignment #3

Arch 510 HPE
April 7th, 2010

TRIPLE GLAZING

SHIM

FLASHING

TERRACOTTA CLADDING

HORIZONTAL SUPPORTS
WITH THERMAL BREAK

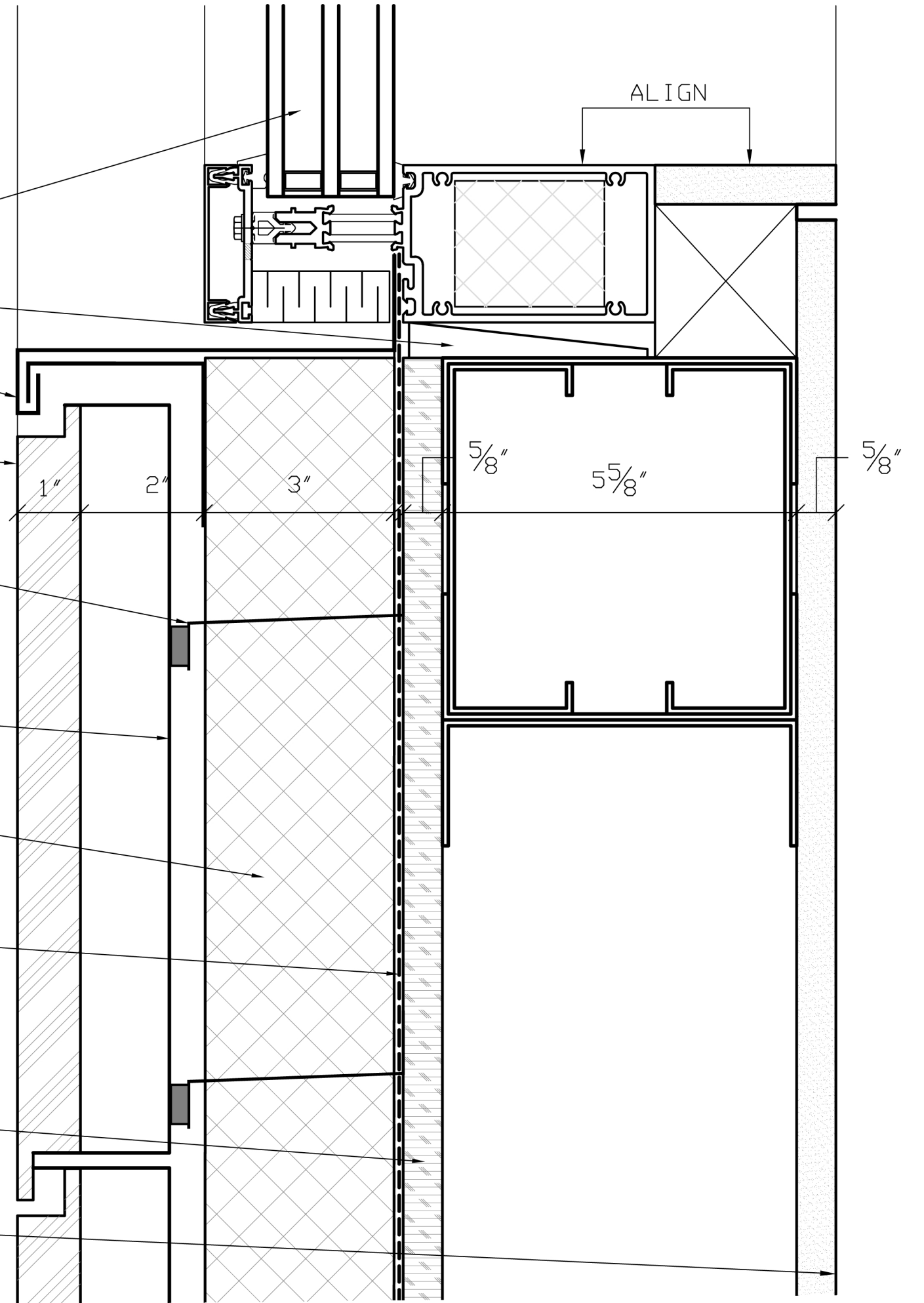
VERTICAL SUPPORTS

RIGID INSULATION

PRODUCT WITH VAPOR,
AIR & WATER RESISTIVE
BARRIERS INCORPORATED

PLYWOOD SHEATHING

GYP. BOARD



3

WINDOW JAMB DETAIL

SCALE 6" = 1'-0"

Megan Coyle
Assignment #3

Arch 510 HPE
April 17th, 2010

