

building arts academy:  
a three-story concrete-frame building with two basic facade conditions: an elevation rhythm alternating glazing and shelving units, expressed as solid walls on the exterior, and classrooms bounded in walls with punched window openings.

SHELF UNIT WITH INSULATION ON EXTERIOR WALL AND ON CABINET DOOR--FORMING INSULATED AIR SPACE AT LINE OF ADJACENT GLAZING

DETAIL # 1--HEAD AT RECESSED FULL HEIGHT GLAZING--WOOD SOFFIT

GLAZING UNIT--KAWNEER 5500 ISOWEB SERIES, TRIPLE GLAZED WITH THERMAL BREAKS, OPERABLE AWNING WINDOW ON CENTER LIGHT

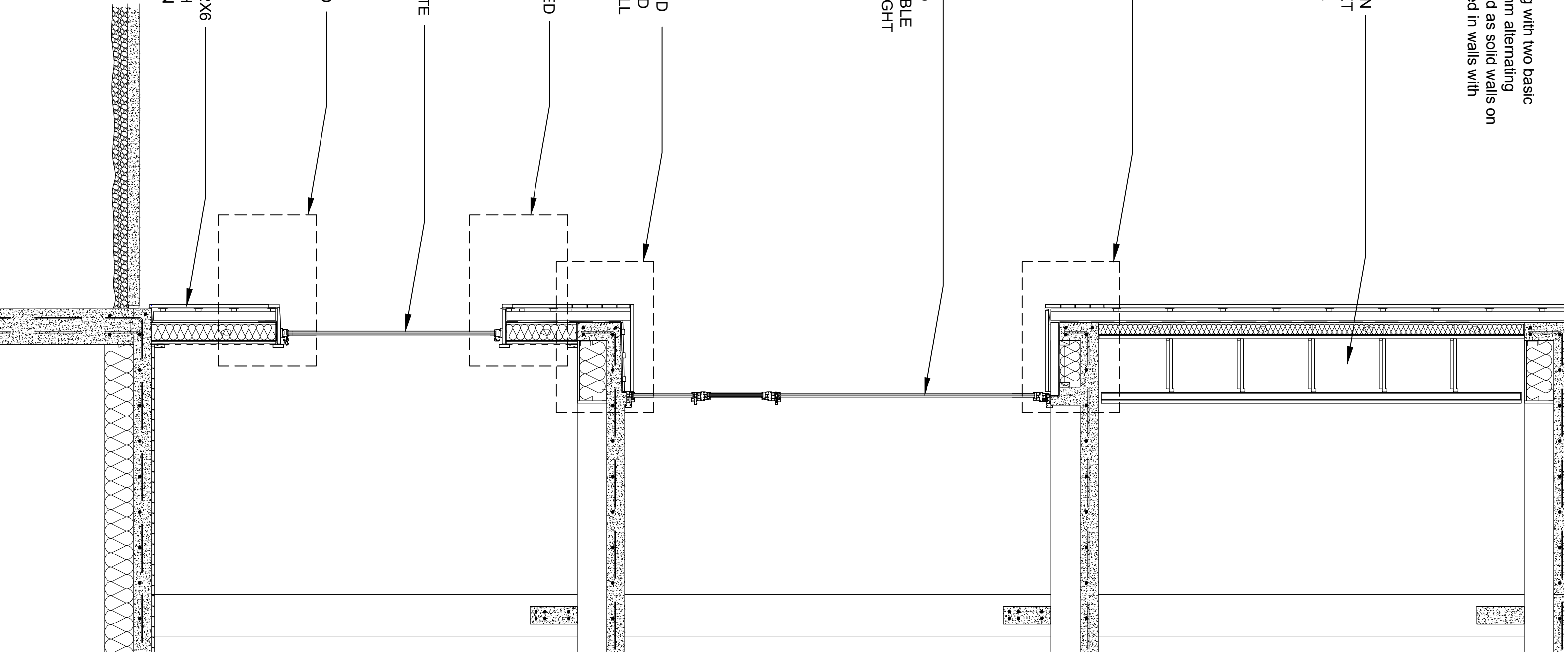
DETAIL # 2--SILL AT RECESSED FULL HEIGHT GLAZING--WOOD CLADDING CARRIED OVER SILL

DETAIL # 3--HEAD AT PUNCHED WOOD WINDOW

TRIPLE GLAZED MARYVIN ULTIMATE CASEMENT, WOOD FRAME

DETAIL # 4--SILL AT PUNCHED WOOD WINDOW

CLASSROOM WALL, FRAMED IN 2X6 LIGHT GAUGE STEEL STUD, WITH EXTERIOR INSULATION AND RAIN SCREEN



Wall section

scale: 3/8" = 1'-0"

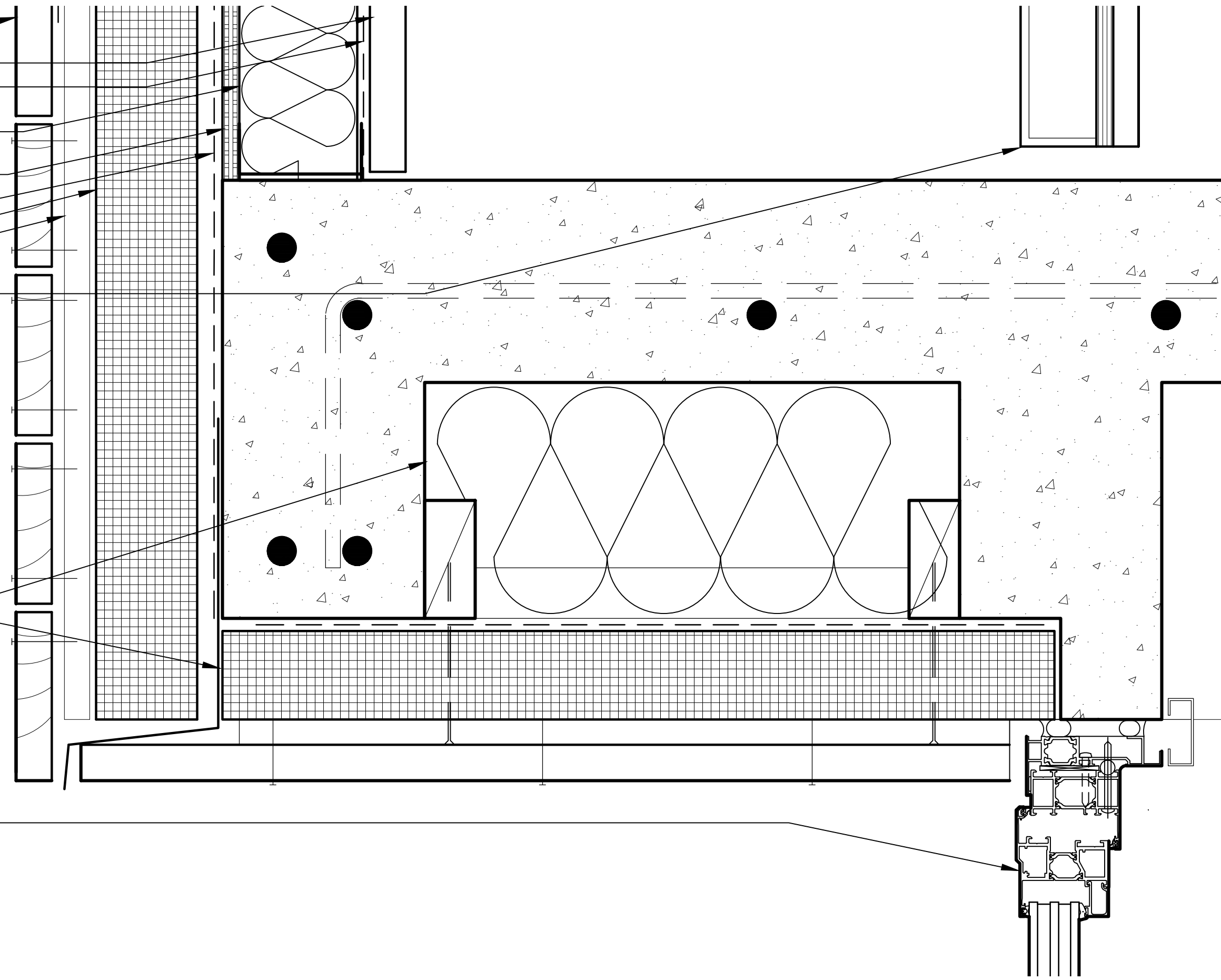
CRAIG RIEGELNEGG

5/4" WOOD CLADDING  
 POLYETHYLENE PLASTIC  
 VAPOR RETARDER  
 STEEL 2X4 FRAMING W/ R-13  
 BATT INSULATION  
 1/2" CDX PLYWOOD SHEATHING  
 FABRIC MOISTURE BARRIER  
 3" RIGID FOAM INSULATION  
 3/4" CEDAR FURRING AND AIR  
 SPACE  
 INSULATED CABINET  
 SLIDE/PIVOT DOOR

R-13 BATT INSULATION  
 ALUMINUM FLASHING

KAWNEER 5500 ISOWEB  
 GLAZING SYSTEM

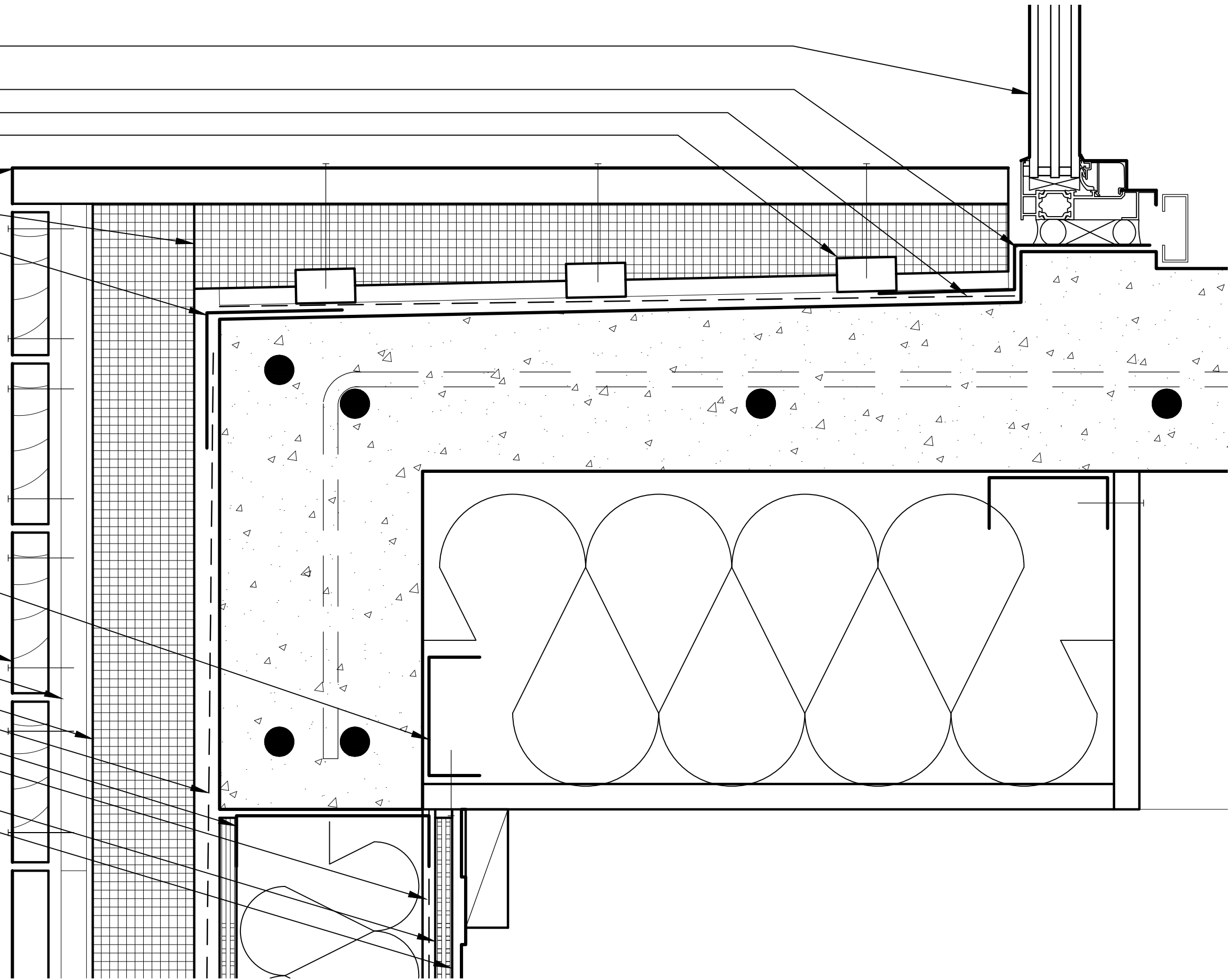
detail 1  
 scale: 4" = 1'-0"  
 CRAIG RIEGELNEGG



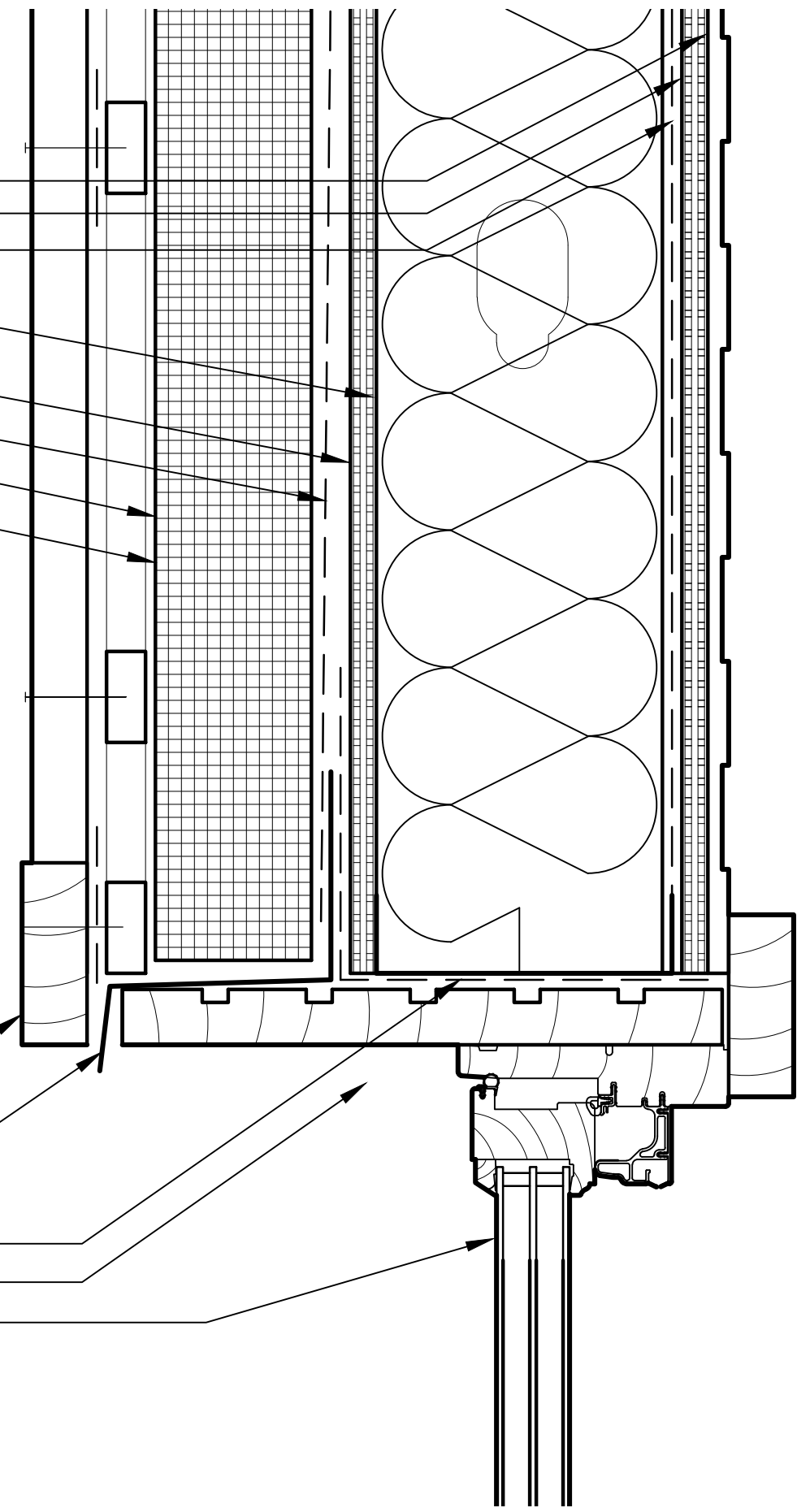
KAWNEER 5500 ISOWEB  
 GLAZING SYSTEM  
 ALUMINUM FLASHING  
 WATERPROOF EPDM MEMBRANE  
 1" FURRING STRIPS ROUTED INTO  
 INSULATION  
 3" RIGID FOAM INSULATION  
 5/4" WOOD CLADDING  
 ALUMINUM FLASHING

R-13 BATT INSULATION  
 5/4" WOOD CLADDING  
 3/4" CEDAR FURRING AND AIR  
 SPACE  
 3" RIGID FOAM INSULATION  
 FABRIC MOISTURE BARRIER  
 STEEL 2X6 FRAMING W/ R-13  
 BATT INSULATION  
 POLYETHYLENE PLASTIC  
 VAPOR RETARDER  
 1/2" PLYWOOD  
 3/8" VINYL WALL COVERING

detail 2  
 scale: 4" = 1'-0"  
 CRAIG RIEGELNEGG



3/8" VINYL WALL COVERING  
 1/2" PLYWOOD  
 POLYETHYLENE PLASTIC  
 VAPOR RETARDER  
 STEEL 2X6 FRAMING W/ R-13  
 BATT INSULATION  
 1/2" CDX PLYWOOD SHEATHING  
 FABRIC MOISTURE BARRIER  
 3" RIGID FOAM INSULATION  
 3/4" CEDAR FURRING AND AIR  
 SPACE



5/4" WOOD CLADDING  
 ALUMINUM FLASHING  
 3/4" CEDAR FRAME  
 SAM FLASHING WRAP  
 MARVIN TRIPLE-GLAZED WOOD  
 CASEMENT WINDOW

detail 3  
 scale: 4" = 1'-0"  
 CRAIG RIEGELNEGG

MARVIN TRIPLE-GLAZED WOOD  
CASEMENT WINDOW  
3/4" CEDAR FRAME  
ALUMINUM PAN  
SAM FLASHING WRAP

3/8" VINYL WALL COVERING  
1/2" PLYWOOD  
POLYETHYLENE PLASTIC  
VAPOR RETARDER  
STEEL 2X6 FRAMING W/ R-13  
BATT INSULATION  
1/2" CDX PLYWOOD SHEATHING  
FABRIC MOISTURE BARRIER  
3" RIGID FOAM INSULATION  
3/4" CEDAR FURRING AND AIR  
SPACE

detail 4  
scale: 4" = 1'-0"  
CRAIG RIEGELNEGG

