



# Technology and Instruction: Enhanced Delivery of Standards



James M. Bates

C.A.L. Licensure Program – EDLD 655 – With Dr. K. Scalise - University of Oregon

## Technology Goal

### Deliver Oregon Standards Using Technology

The specific goal is to implement and advance the instructional use of document cameras and digital projectors in the classroom. Instructional proficiency will increase from 35% in the Developing/Secure/Advanced rubric categories in August of 2009 to 95% by June of 2010 as measure by survey results collected each quarter.

#### Narrative:

Our elementary school has had the privilege of a technology teacher for three years. During that time, technology benchmarks have been integrated into the specialist schedule. Students rotated on a weekly and bi-weekly basis into the computer lab. Student time wasn't spent on basic typing programs. The technology teacher took time to find computer programs that supported specific math benchmark support. The games students played were content rich. The school also received laptops from teachers in grades 4 and 5 as part of a grant. Student council supported the acquisition of document cameras with digital projectors to use with the laptops. Grades K, 1, 2 and 3 were given a shared equipped cart with a document camera and digital projector. There was no formal training provided but there was technical support for beginning use and beyond.

We have lost our technology teacher due to state funding reductions. We are faced with the task of advancing technology supply and use during financially challenging times.

## Timelines

### 2009-2010

- Summer start-up
  - Confirm equipment placement
  - Complete rubric survey – Survey Monkey
- First Quarter
  - Distribute results from survey
  - Align action plan to calendar
- Second Quarter – End Semester 1
  - Monitor and report progress of action plan
  - Complete rubric survey - celebrate
- Third Quarter
  - Monitor plan, make adjustments
  - Complete survey – celebrate
- Fourth Quarter – End Semester 2
  - Monitor plan progress
  - Complete year end survey
  - Celebrate progress
  - Recommendations for 10-11 SIP, PDP, PDUs

### 2010-2011

- Identify plan progress and modify SIP
- Support maintenance schedule of equipment

## Staff Development

Staff development will occur through the 2009 – 2010 school year and beyond. The cost effective approach will utilize teaching experiences through a peer-to-peer coaching model. Utilization will be characterized through a rubric containing Beginning, Developing, Secure and Advanced descriptions. Short self-evaluation surveys will be distributed each quarter to collect data on progress through the instructional journey for teachers and presentation use by students.

Progressive training sessions from class to class  
 Use of staff meetings to have peer-to-peer reports  
 Peer-to-peer support facilitated by the building Principal  
 Success strategies identified and relayed through e-mail  
 School-to-School e-mail connections for peer share

Resources	Personnel	Community	Financial
<b>First Quarter</b>	Teachers are trained in care and maintenance of technology	PTO is invited to support the technology advancement plan	Identify use for and goals of the 2009-2010 fundraiser
<b>Second Quarter</b>	Teachers are peer trained to operate projectors and cameras	PTO is updated at their stated meetings regarding goal progress and given specific items that could benefit from their support	Allocate and expend funds according to the goals set in the first quarter
<b>Third Quarter</b>	Teachers identify state benchmarks met for technology	PTO and Board is invited for one or more demonstration lessons to a classroom	Evaluate and allocate funds according to the goals set and amend according to mid-course adjustments
<b>Fourth Quarter</b>	Teachers use document cameras and projectors for instruction. Teachers complete a year end survey for use in 2010-2011 planning	A year-end report is given to PTO for celebration and planning for the 2010-2011 school year.	Evaluate current conditions of goals, allocations and mid-course adjustments. Establish initial recommendations for 2010-2011
<b>2010-2011</b>	Survey results and summary are used for the advancement of instructional practices	PTO, School Board, and Community are kept informed of progress and ways to help	Review conditions and recommendations. Make adjustments if needed and proceed

## Rubric for Implementation

Beginning	1	Teachers are trained in care and maintenance of technology Teachers complete a quarterly survey of prof. ciency Students are trained to support and care for equipment Building Principal uses projector and camera in staff meetings Building Principal recognizes staff members for use
Developing	2	Teachers are trained in care and maintenance of technology Teachers complete a quarterly survey of prof. ciency Teachers are peer trained to operate projectors and cameras Students are trained to support and care for equipment Students participate during instruction Building Principal uses projector and camera in staff meetings Building Principal recognizes staff members for use Building Principal provides time in staff meetings for sharing
Secure	3	Teachers are trained in care and maintenance of technology Teachers complete a quarterly survey of prof. ciency Teachers are peer trained to operate projectors and cameras Teachers use document cameras and projectors for instruction Students are trained to support and care for equipment Students participate during instruction Student share in the responsibilities of lesson progression Building Principal uses projector and camera in staff meetings Building Principal recognizes staff members for use Building Principal provides time in staff meetings for sharing Building Principal facilitates and reports prof. ciency progress.

## Resources

### Financial:

\* Our site averages nine to ten thousand dollars in net income as a result of the annual fundraiser. These funds can support equipment upkeep and peripheral equipment needs that are unique to each classroom setting during further roll out.

### Personnel:

Our school has personnel in the central technology office that would be available at no further cost to support in operation, training and troubleshooting. Some staff on site has developed proficient use skills during the previous year. As we advance, these experiences can be utilized to further instructional use.

### Community:

\* The school PTO has a mission statement that supports learning gains of students and the objectives that lead to those gains. The goals of technology advancement aligns clearly with their mission. Financial support has occurred from this partner and is likely to continue to be so if the request matches their mission.

Advanced	4	<ul style="list-style-type: none"> <li>• Teachers are trained in care and maintenance of technology</li> <li>• Teachers complete a quarterly survey of prof. ciency</li> <li>• Teachers are peer trained to operate projectors and cameras</li> <li>• Teachers use document cameras and projectors for instruction</li> <li>• Teachers identify state benchmarks met for technology</li> <li>• Students are trained to support and care for equipment</li> <li>• Students participate during instruction</li> <li>• Students share in the responsibilities of lesson progression</li> <li>• Students utilize the technology during their presentations</li> <li>• Building Principal uses projector and camera in staff meetings</li> <li>• Building Principal recognizes staff members for use</li> <li>• Building Principal provides time in staff meetings for sharing</li> <li>• Building Principal facilitates and reports prof. ciency progress</li> <li>• Building Principal provides connections for PDP,PDU &amp; SIP</li> </ul>
----------	---	---

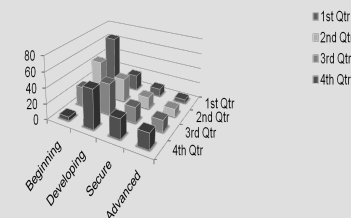
## Contact Information and Acknowledgements

For further information please contact Jim Bates – [jim.bates@crookcounty.k12.or.us](mailto:jim.bates@crookcounty.k12.or.us) Special thanks to Dr. Kathleen Scalise for ideas and templates.

## Results Indicators

Figure C shows the intended progression of proficiency among the staff at the school. This corresponds to the Rubric developed to use during the 2009-2010 school year.

Figure C. Proficiency Progression



	Beginning	Developing	Secure	Advanced
■ 1st Qtr	65	20	10	5
■ 2nd Qtr	45	30	15	10
■ 3rd Qtr	25	40	20	15
■ 4th Qtr	5	50	25	20

- Teachers are peer trained to operate projectors and cameras
- Teachers complete a quarterly survey of proficiency
- Teachers are trained in care and maintenance of technology
- Teachers use document cameras and projectors for instruction
- Teachers identify state benchmarks met for technology
- Teachers identify state benchmarks met for technology
- Students participate during instruction
- Students share in the responsibilities of lesson progression
- Students utilize the technology during their presentations
- Students are trained to support and care for equipment
- Building Principal provides time in staff meetings for sharing
- Building Principal provides connections for PDP,PDU & SIP
- Building Principal uses projector and cameras in staff meetings
- Building Principal recognizes staff members for use
- Building Principal facilitates and reports proficiency progress

## References

- Saifer, D. (2004, September). The 'T5 Design Model ... *Educational Media International*, 41(3), 207-217. Retrieved July 15, 2009, from Academic Search Premier database.
- Lewis, Theodore. (2009, August). A Picture Is Worth ... *International Journal of Technology & Design Education* 19(3), 255-268. Retrieved July 14, 2009, from Academic Search Premier database.
- Whittier, David. (2007, August). The RE Freeze: Teaching with Technology ... *Journal of Education* 188(1), 55-92. Retrieved July 14, 2009, from Academic Search Premier database.
- Scalise K. (2007). Differentiated E-Learning: Five Approaches... *International Journal of Learning Technology* 3(2), 169-182. Retrieved July 14, 2009, from Academic Search Premier database.